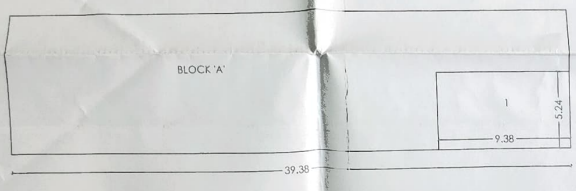
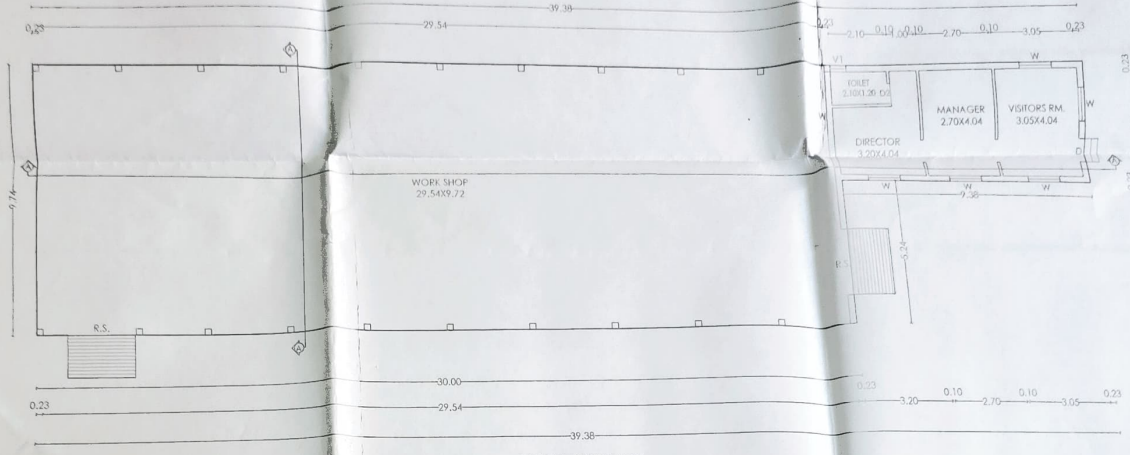
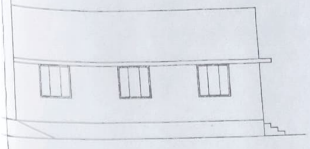
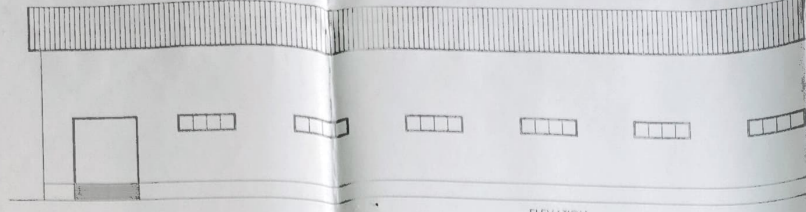
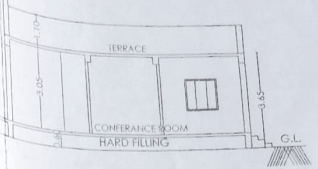
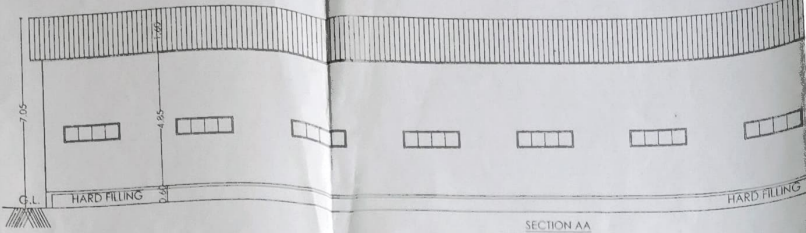


TYPE-A
WORKSHOP & OFFICE

SANTA
FOR 15

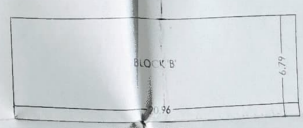
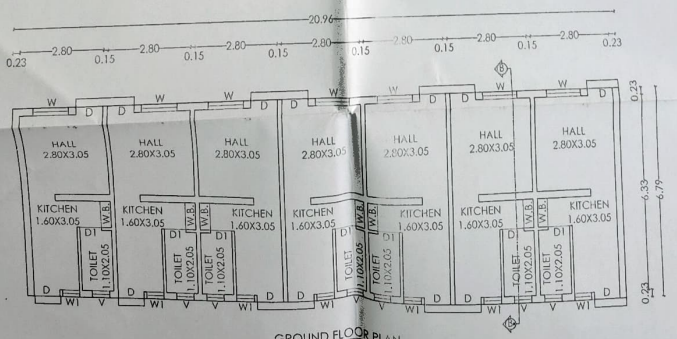
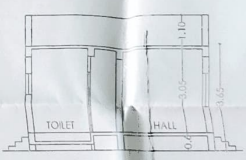
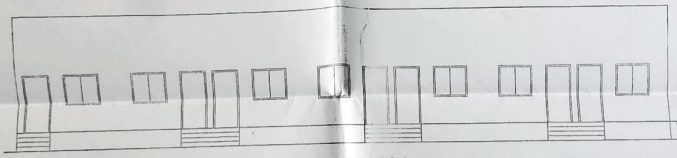
SR. NO.
1
2
3



AREA OF BLOCK 'A'
39.38x9.74 = 383.56
DEDUCTION
1. 9.28x5.24 = 49.15
383.56 - 49.15 = 334.41
GROUND FLOOR AREA = 334.41 SQ.M.

DOORS AND WINDOWS		
P.S.	3.00 X 3.00	M.S. ROLLING SHUTTER
D	0.90 X 2.10	T.W. PANELLED DOOR
D1	0.75 X 2.10	T.W. PANELLED DOOR
W	1.20 X 1.20	M.S. GLAZED WINDOW
V	2.00 X 0.60	M.S. GLAZED WINDOW
V1	0.60 X 0.75	M.S. VENTILATOR

TYPE-B
STAFF QUARTER



AREA OF BLOCK 'B'
20.96x6.79 = 142.31
GROUND FLOOR AREA = 142.31 SQ.M.

DOORS AND WINDOWS		
D	0.90 X 2.10	T.W. PANELLED DOOR
D1	0.75 X 2.10	T.W. PANELLED DOOR
W	1.20 X 1.20	M.S. GLAZED WINDOW
W1	0.60 X 1.20	M.S. GLAZED WINDOW
V	0.60 X 0.75	M.S. VENTILATOR

