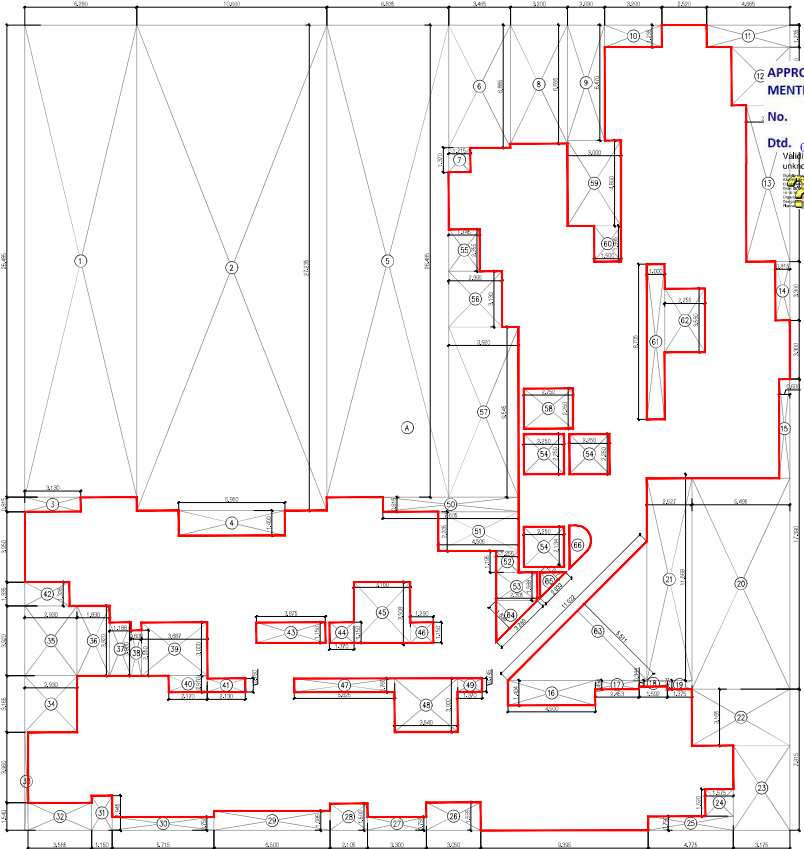




TYPICAL 7TH , 11TH, 15TH, FLOOR PLAN



REQUIRED REFUGEE AREA STATEMENT AS PER OCCUPANT

REFUGEE AREA REQUIRED AT 7TH,11TH& 15TH	TOTAL NO. OF PERSON ABOVE FLOORS	BUILT-UP AREA	TOTAL
OCCUPANT LOAD FOR 4 FLOOR	3328.54		3328.54 SQ.M
TOTAL AREA			3328.54 SQ.M
OCCUPANT LOAD (12.50)			266.2832 PERSON
REQUIRED AREA PER PERSON			0.300 SQ.M
WHEEL CHAIR AREA			1.200 SQ.M
TOTAL REQUIRED REFUGEE AREA			81.085 SQ.M
TOTAL PROVIDED REFUGEE AREA (7TH,11TH & 15TH)			87.950 SQ.M
EXCESS REFUGEE AREA			6.865 SQ.M

BUILT UP AREA CALCULATION

TYPICAL 7TH,11TH,15TH FLOOR PLAN	TOTAL ADDITION
A 42.95 X 45.100 X 110	1938.4150 SQ.M
	1938.4150 SQ.M

DEDUCTIONS

NO	DESCRIPTION	AREA	NO	DESCRIPTION	AREA
1	6.280 X 28.485 X 110	166.32550 SQ.M	35	2.230 X 3.220 X 110	11.48250 SQ.M
2	10.860 X 27.115 X 110	200.35500 SQ.M	36	1.830 X 2.020 X 110	11.21300 SQ.M
3	5.170 X 0.815 X 110	5.17000 SQ.M	37	0.650 X 2.020 X 110	3.95000 SQ.M
4	1.830 X 0.815 X 110	1.83000 SQ.M	38	0.650 X 2.020 X 110	3.95000 SQ.M
5	6.280 X 28.485 X 110	166.32550 SQ.M	39	2.170 X 0.910 X 110	1.97650 SQ.M
6	1.830 X 0.815 X 110	1.83000 SQ.M	40	2.205 X 1.335 X 110	3.34200 SQ.M
7	1.830 X 0.815 X 110	1.83000 SQ.M	41	3.875 X 1.150 X 110	4.446250 SQ.M
8	1.830 X 0.815 X 110	1.83000 SQ.M	42	1.370 X 1.150 X 110	1.57650 SQ.M
9	2.230 X 6.470 X 110	15.95850 SQ.M	43	1.160 X 1.150 X 110	1.07700 SQ.M
10	1.830 X 0.815 X 110	1.83000 SQ.M	44	1.250 X 1.150 X 110	1.48750 SQ.M
11	4.465 X 1.135 X 110	4.77000 SQ.M	45	1.450 X 1.150 X 110	1.45000 SQ.M
12	1.830 X 0.815 X 110	1.83000 SQ.M	46	1.440 X 1.150 X 110	1.44000 SQ.M
13	2.425 X 0.815 X 110	2.12500 SQ.M	47	1.250 X 1.150 X 110	1.48750 SQ.M
14	1.830 X 0.815 X 110	1.83000 SQ.M	48	1.250 X 1.150 X 110	1.48750 SQ.M
15	0.000 X 0.000 X 110	0.00000 SQ.M	49	1.250 X 1.150 X 110	1.48750 SQ.M
16	1.830 X 0.815 X 110	1.83000 SQ.M	50	1.250 X 1.150 X 110	1.48750 SQ.M
17	2.425 X 0.494 X 110	1.32000 SQ.M	51	1.250 X 1.150 X 110	1.48750 SQ.M
18	1.830 X 0.815 X 110	1.83000 SQ.M	52	1.250 X 1.150 X 110	1.48750 SQ.M
19	1.370 X 0.494 X 110	0.62700 SQ.M	53	1.250 X 1.150 X 110	1.48750 SQ.M
20	1.830 X 0.815 X 110	1.83000 SQ.M	54	1.250 X 1.150 X 110	1.48750 SQ.M
21	1.830 X 0.815 X 110	1.83000 SQ.M	55	1.250 X 1.150 X 110	1.48750 SQ.M
22	1.830 X 0.815 X 110	1.83000 SQ.M	56	1.250 X 1.150 X 110	1.48750 SQ.M
23	1.170 X 2.205 X 110	1.42000 SQ.M	57	1.250 X 1.150 X 110	1.48750 SQ.M
24	1.830 X 0.815 X 110	1.83000 SQ.M	58	1.250 X 1.150 X 110	1.48750 SQ.M
25	4.475 X 0.790 X 110	3.77250 SQ.M	59	1.250 X 1.150 X 110	1.48750 SQ.M
26	1.830 X 0.815 X 110	1.83000 SQ.M	60	1.250 X 1.150 X 110	1.48750 SQ.M
27	1.830 X 0.815 X 110	1.83000 SQ.M	61	1.250 X 1.150 X 110	1.48750 SQ.M
28	1.830 X 0.815 X 110	1.83000 SQ.M	62	1.250 X 1.150 X 110	1.48750 SQ.M
29	6.400 X 1.085 X 110	7.60000 SQ.M	63	1.250 X 1.150 X 110	1.48750 SQ.M
30	1.830 X 0.815 X 110	1.83000 SQ.M	64	1.250 X 1.150 X 110	1.48750 SQ.M
31	1.830 X 0.815 X 110	1.83000 SQ.M	65	1.250 X 1.150 X 110	1.48750 SQ.M
32	0.185 X 4.500 X 110	2.28750 SQ.M	66	1.250 X 1.150 X 110	1.48750 SQ.M
33	2.230 X 3.165 X 110	3.27300 SQ.M	67	1.250 X 1.150 X 110	1.48750 SQ.M

35	2.230 X 3.220 X 110	11.48250 SQ.M
36	1.830 X 2.020 X 110	11.21300 SQ.M
37	0.650 X 2.020 X 110	3.95000 SQ.M
38	0.650 X 2.020 X 110	3.95000 SQ.M
39	2.170 X 0.910 X 110	1.97650 SQ.M
40	2.205 X 1.335 X 110	3.34200 SQ.M
41	3.875 X 1.150 X 110	4.446250 SQ.M
42	1.370 X 1.150 X 110	1.57650 SQ.M
43	1.160 X 1.150 X 110	1.07700 SQ.M
44	1.250 X 1.150 X 110	1.48750 SQ.M
45	1.450 X 1.150 X 110	1.45000 SQ.M
46	1.440 X 1.150 X 110	1.44000 SQ.M
47	1.250 X 1.150 X 110	1.48750 SQ.M
48	1.250 X 1.150 X 110	1.48750 SQ.M
49	1.250 X 1.150 X 110	1.48750 SQ.M
50	1.250 X 1.150 X 110	1.48750 SQ.M
51	1.250 X 1.150 X 110	1.48750 SQ.M
52	1.250 X 1.150 X 110	1.48750 SQ.M
53	1.250 X 1.150 X 110	1.48750 SQ.M
54	1.250 X 1.150 X 110	1.48750 SQ.M
55	1.250 X 1.150 X 110	1.48750 SQ.M
56	1.250 X 1.150 X 110	1.48750 SQ.M
57	1.250 X 1.150 X 110	1.48750 SQ.M
58	1.250 X 1.150 X 110	1.48750 SQ.M
59	1.250 X 1.150 X 110	1.48750 SQ.M
60	1.250 X 1.150 X 110	1.48750 SQ.M
61	1.250 X 1.150 X 110	1.48750 SQ.M
62	1.250 X 1.150 X 110	1.48750 SQ.M
63	1.250 X 1.150 X 110	1.48750 SQ.M
64	1.250 X 1.150 X 110	1.48750 SQ.M
65	1.250 X 1.150 X 110	1.48750 SQ.M
66	1.250 X 1.150 X 110	1.48750 SQ.M
67	1.250 X 1.150 X 110	1.48750 SQ.M
TOTAL BUILT UP AREA [X - Y]	TOTAL DEDUCTIONS	1178.496250 SQ.M
		720.919000 SQ.M

APPROVED SUBJECT TO THE CONDITIONS MENTIONED IN This Office Letter

No. CIDCO/BP-18326/TPQ(NM & K) 2022/12021
 Dtd. 05 Mar 2024



DESCRIPTION OF CC.

PROPOSED RESIDENTIAL/CUM COMMERCIAL BUILDING ON PLOT NO.27A, SECTOR-34A, KHARGHAR, NAVE(MUMBAI).

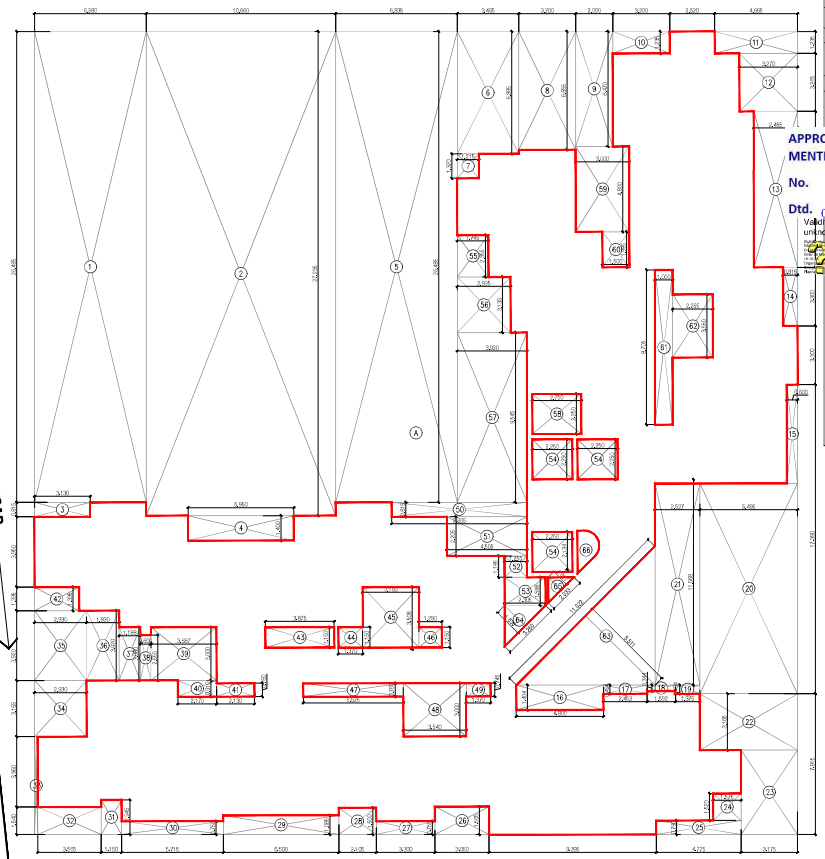
Scale: 1:300
 DATE: 22.03.2024
 PREP BY: A.P. KHANNA
 CHK BY: S.V. KHANNA
 DES. BY: A.P. KHANNA

M/S MILENNIUM GROUP
 CHARTERED ARCHITECTS AND ENGINEERS

SATHIJI ARCHITECTS
 CHARTERED ARCHITECTS AND ENGINEERS

APPROVED SUBJECT TO THE CONDITIONS MENTIONED IN This Office Letter

No. CIDCO/BP-18326/TPQ/(NM & K) 2022/12021
 Dtd. 05 Mar 2024

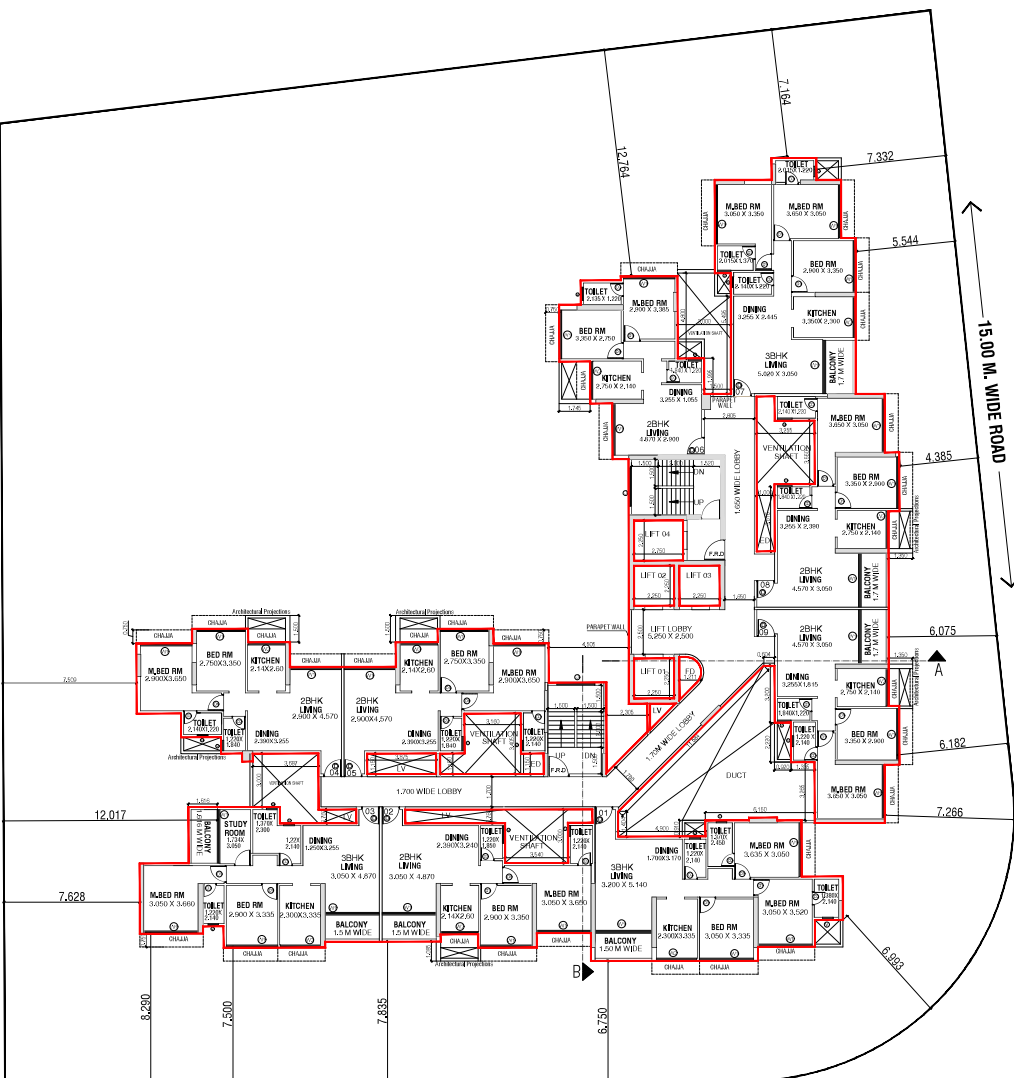


AREA DIAGRAM OF 19TH, 23RD FLOOR PLAN

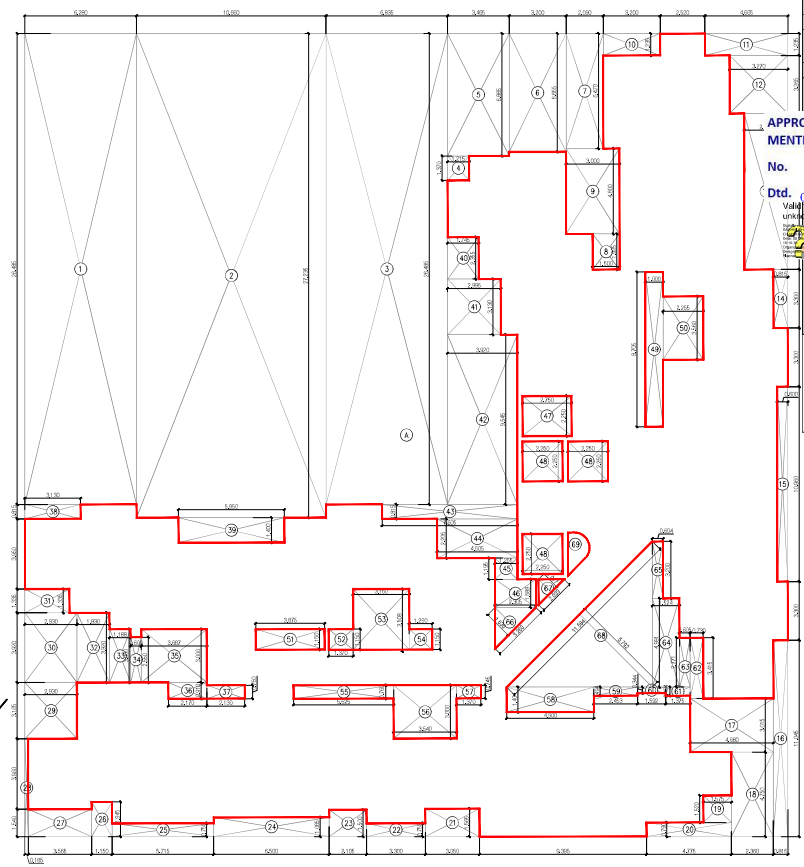
BUILT UP AREA CALCULATION		TYPICAL 19TH, 23RD FLOOR PLAN	
Sl. No.	Area (sq.m)	Sl. No.	Area (sq.m)
1	10.185	31	1.000
2	10.185	32	1.000
3	10.185	33	1.000
4	10.185	34	1.000
5	10.185	35	1.000
6	10.185	36	1.000
7	10.185	37	1.000
8	10.185	38	1.000
9	10.185	39	1.000
10	10.185	40	1.000
11	10.185	41	1.000
12	10.185	42	1.000
13	10.185	43	1.000
14	10.185	44	1.000
15	10.185	45	1.000
16	10.185	46	1.000
17	10.185	47	1.000
18	10.185	48	1.000
19	10.185	49	1.000
20	10.185	50	1.000
21	10.185	51	1.000
22	10.185	52	1.000
23	10.185	53	1.000
24	10.185	54	1.000
25	10.185	55	1.000
26	10.185	56	1.000
27	10.185	57	1.000
28	10.185	58	1.000
29	10.185	59	1.000
30	10.185	60	1.000
31	10.185	61	1.000
32	10.185	62	1.000
33	10.185	63	1.000
34	10.185	64	1.000
35	10.185	65	1.000
36	10.185	66	1.000
37	10.185	67	1.000
38	10.185	68	1.000
39	10.185	69	1.000
40	10.185	70	1.000
41	10.185	71	1.000
42	10.185	72	1.000
43	10.185	73	1.000
44	10.185	74	1.000
45	10.185	75	1.000
46	10.185	76	1.000
47	10.185	77	1.000
48	10.185	78	1.000
49	10.185	79	1.000
50	10.185	80	1.000
51	10.185	81	1.000
52	10.185	82	1.000
53	10.185	83	1.000
54	10.185	84	1.000
55	10.185	85	1.000
56	10.185	86	1.000
57	10.185	87	1.000
58	10.185	88	1.000
59	10.185	89	1.000
60	10.185	90	1.000
61	10.185	91	1.000
62	10.185	92	1.000
63	10.185	93	1.000
64	10.185	94	1.000
65	10.185	95	1.000
66	10.185	96	1.000
67	10.185	97	1.000
68	10.185	98	1.000
69	10.185	99	1.000
70	10.185	100	1.000
71	10.185	101	1.000
72	10.185	102	1.000
73	10.185	103	1.000
74	10.185	104	1.000
75	10.185	105	1.000
76	10.185	106	1.000
77	10.185	107	1.000
78	10.185	108	1.000
79	10.185	109	1.000
80	10.185	110	1.000
81	10.185	111	1.000
82	10.185	112	1.000
83	10.185	113	1.000
84	10.185	114	1.000
85	10.185	115	1.000
86	10.185	116	1.000
87	10.185	117	1.000
88	10.185	118	1.000
89	10.185	119	1.000
90	10.185	120	1.000
91	10.185	121	1.000
92	10.185	122	1.000
93	10.185	123	1.000
94	10.185	124	1.000
95	10.185	125	1.000
96	10.185	126	1.000
97	10.185	127	1.000
98	10.185	128	1.000
99	10.185	129	1.000
100	10.185	130	1.000
101	10.185	131	1.000
102	10.185	132	1.000
103	10.185	133	1.000
104	10.185	134	1.000
105	10.185	135	1.000
106	10.185	136	1.000
107	10.185	137	1.000
108	10.185	138	1.000
109	10.185	139	1.000
110	10.185	140	1.000
111	10.185	141	1.000
112	10.185	142	1.000
113	10.185	143	1.000
114	10.185	144	1.000
115	10.185	145	1.000
116	10.185	146	1.000
117	10.185	147	1.000
118	10.185	148	1.000
119	10.185	149	1.000
120	10.185	150	1.000
121	10.185	151	1.000
122	10.185	152	1.000
123	10.185	153	1.000
124	10.185	154	1.000
125	10.185	155	1.000
126	10.185	156	1.000
127	10.185	157	1.000
128	10.185	158	1.000
129	10.185	159	1.000
130	10.185	160	1.000
131	10.185	161	1.000
132	10.185	162	1.000
133	10.185	163	1.000
134	10.185	164	1.000
135	10.185	165	1.000
136	10.185	166	1.000
137	10.185	167	1.000
138	10.185	168	1.000
139	10.185	169	1.000
140	10.185	170	1.000
141	10.185	171	1.000
142	10.185	172	1.000
143	10.185	173	1.000
144	10.185	174	1.000
145	10.185	175	1.000
146	10.185	176	1.000
147	10.185	177	1.000
148	10.185	178	1.000
149	10.185	179	1.000
150	10.185	180	1.000
151	10.185	181	1.000
152	10.185	182	1.000
153	10.185	183	1.000
154	10.185	184	1.000
155	10.185	185	1.000
156	10.185	186	1.000
157	10.185	187	1.000
158	10.185	188	1.000
159	10.185	189	1.000
160	10.185	190	1.000
161	10.185	191	1.000
162	10.185	192	1.000
163	10.185	193	1.000
164	10.185	194	1.000
165	10.185	195	1.000
166	10.185	196	1.000
167	10.185	197	1.000
168	10.185	198	1.000
169	10.185	199	1.000
170	10.185	200	1.000
171	10.185	201	1.000
172	10.185	202	1.000
173	10.185	203	1.000
174	10.185	204	1.000
175	10.185	205	1.000
176	10.185	206	1.000
177	10.185	207	1.000
178	10.185	208	1.000
179	10.185	209	1.000
180	10.185	210	1.000
181	10.185	211	1.000
182	10.185	212	1.000
183	10.185	213	1.000
184	10.185	214	1.000
185	10.185	215	1.000
186	10.185	216	1.000
187	10.185	217	1.000
188	10.185	218	1.000
189	10.185	219	1.000
190	10.185	220	1.000
191	10.185	221	1.000
192	10.185	222	1.000
193	10.185	223	1.000
194	10.185	224	1.000
195	10.185	225	1.000
196	10.185	226	1.000
197	10.185	227	1.000
198	10.185	228	1.000
199	10.185	229	1.000
200	10.185	230	1.000
201	10.185	231	1.000
202	10.185	232	1.000
203	10.185	233	1.000
204	10.185	234	1.000
205	10.185	235	1.000
206	10.185	236	1.000
207	10.185	237	1.000
208	10.185	238	1.000
209	10.185	239	1.000
210	10.185	240	1.000
211	10.185	241	1.000
212	10.185	242	1.000
213	10.185	243	1.000
214	10.185	244	1.000
215	10.185	245	1.000
216	10.185	246	1.000
217	10.185	247	1.000
218	10.185	248	1.000
219	10.185	249	1.000
220	10.185	250	1.000
221	10.185	251	1.000
222	10.185	252	1.000
223	10.185	253	1.000
224	10.185	254	1.000
225	10.185	255	1.000
226	10.185	256	1.000
227	10.185	257	1.000
228	10.185	258	1.000
229	10.185	259	1.000
230	10.185	260	1.000
231	10.185	261	1.000
232	10.185	262	1.000
233	10.185	263	1.000
234	10.185	264	1.000
235	10.185	265	1.000
236	10.185	266	1.000
237	10.185	267	1.000
238	10.185	268	1.000
239	10.185	269	1.000
240	10.185	270	1.000
241	10.185	271	1.000
242	10.185	272	1.000
243	10.185	273	1.000
244	10.185	274	1.000
245	10.185	275	1.000
246	10.185	276	1.000
247	10.185	277	1.000
248	10.185	278	1.000
249	10.185	279	1.000
250	10.18		

APPROVED SUBJECT TO THE CONDITIONS MENTIONED IN This Office Letter

No. CIDCO/BP-18326/TPQ/(NM & K) 2022/12021
 Dtd. 05 Mar 2024



← 45.00 M. WIDE ROAD →
 TYPICAL 20TH, 21ST, 22ND & 24TH FLOOR PLAN



AREA DIAGRAM OF 20TH, 21ST, 22ND & 24TH FLOOR

BUILT UP AREA CALCULATION

TYPICAL 20TH, 21ST, 22ND, 24TH FLOOR PLAN	42.912 X 45.720 X	1962.478 SQ.M
TOTAL ADDITION	135.478 SQ.M X	1962.478 SQ.M

DEDUCTIONS

6.250 X 26.450 X 1 NO.	=	165.375 SQ.M
7.250 X 27.250 X 1 NO.	=	198.312 SQ.M
8.250 X 28.050 X 1 NO.	=	232.237 SQ.M
9.250 X 28.850 X 1 NO.	=	266.162 SQ.M
10.250 X 29.650 X 1 NO.	=	300.087 SQ.M
11.250 X 30.450 X 1 NO.	=	334.012 SQ.M
12.250 X 31.250 X 1 NO.	=	367.937 SQ.M
13.250 X 32.050 X 1 NO.	=	401.862 SQ.M
14.250 X 32.850 X 1 NO.	=	435.787 SQ.M
15.250 X 33.650 X 1 NO.	=	469.712 SQ.M
16.250 X 34.450 X 1 NO.	=	503.637 SQ.M
17.250 X 35.250 X 1 NO.	=	537.562 SQ.M
18.250 X 36.050 X 1 NO.	=	571.487 SQ.M
19.250 X 36.850 X 1 NO.	=	605.412 SQ.M
20.250 X 37.650 X 1 NO.	=	639.337 SQ.M
21.250 X 38.450 X 1 NO.	=	673.262 SQ.M
22.250 X 39.250 X 1 NO.	=	707.187 SQ.M
23.250 X 40.050 X 1 NO.	=	741.112 SQ.M
24.250 X 40.850 X 1 NO.	=	775.037 SQ.M
25.250 X 41.650 X 1 NO.	=	808.962 SQ.M
26.250 X 42.450 X 1 NO.	=	842.887 SQ.M
27.250 X 43.250 X 1 NO.	=	876.812 SQ.M
28.250 X 44.050 X 1 NO.	=	910.737 SQ.M
29.250 X 44.850 X 1 NO.	=	944.662 SQ.M
30.250 X 45.650 X 1 NO.	=	978.587 SQ.M
31.250 X 46.450 X 1 NO.	=	1012.512 SQ.M
32.250 X 47.250 X 1 NO.	=	1046.437 SQ.M
33.250 X 48.050 X 1 NO.	=	1080.362 SQ.M
34.250 X 48.850 X 1 NO.	=	1114.287 SQ.M
35.250 X 49.650 X 1 NO.	=	1148.212 SQ.M
36.250 X 50.450 X 1 NO.	=	1182.137 SQ.M
37.250 X 51.250 X 1 NO.	=	1216.062 SQ.M
38.250 X 52.050 X 1 NO.	=	1250.012 SQ.M
39.250 X 52.850 X 1 NO.	=	1283.937 SQ.M
40.250 X 53.650 X 1 NO.	=	1317.862 SQ.M
41.250 X 54.450 X 1 NO.	=	1351.787 SQ.M
42.250 X 55.250 X 1 NO.	=	1385.712 SQ.M
43.250 X 56.050 X 1 NO.	=	1419.637 SQ.M
44.250 X 56.850 X 1 NO.	=	1453.562 SQ.M
45.250 X 57.650 X 1 NO.	=	1487.487 SQ.M
46.250 X 58.450 X 1 NO.	=	1521.412 SQ.M
47.250 X 59.250 X 1 NO.	=	1555.337 SQ.M
48.250 X 60.050 X 1 NO.	=	1589.262 SQ.M
49.250 X 60.850 X 1 NO.	=	1623.187 SQ.M
50.250 X 61.650 X 1 NO.	=	1657.112 SQ.M
51.250 X 62.450 X 1 NO.	=	1691.037 SQ.M
52.250 X 63.250 X 1 NO.	=	1724.962 SQ.M
53.250 X 64.050 X 1 NO.	=	1758.887 SQ.M
54.250 X 64.850 X 1 NO.	=	1792.812 SQ.M
55.250 X 65.650 X 1 NO.	=	1826.737 SQ.M
56.250 X 66.450 X 1 NO.	=	1860.662 SQ.M
57.250 X 67.250 X 1 NO.	=	1894.587 SQ.M
58.250 X 68.050 X 1 NO.	=	1928.512 SQ.M
59.250 X 68.850 X 1 NO.	=	1962.437 SQ.M
60.250 X 69.650 X 1 NO.	=	1996.362 SQ.M
61.250 X 70.450 X 1 NO.	=	2030.287 SQ.M
62.250 X 71.250 X 1 NO.	=	2064.212 SQ.M
63.250 X 72.050 X 1 NO.	=	2098.137 SQ.M
64.250 X 72.850 X 1 NO.	=	2132.062 SQ.M
65.250 X 73.650 X 1 NO.	=	2165.987 SQ.M
66.250 X 74.450 X 1 NO.	=	2200.012 SQ.M
67.250 X 75.250 X 1 NO.	=	2233.937 SQ.M
68.250 X 76.050 X 1 NO.	=	2267.862 SQ.M
69.250 X 76.850 X 1 NO.	=	2301.787 SQ.M
70.250 X 77.650 X 1 NO.	=	2335.712 SQ.M
71.250 X 78.450 X 1 NO.	=	2369.637 SQ.M
72.250 X 79.250 X 1 NO.	=	2403.562 SQ.M
73.250 X 80.050 X 1 NO.	=	2437.487 SQ.M
74.250 X 80.850 X 1 NO.	=	2471.412 SQ.M
75.250 X 81.650 X 1 NO.	=	2505.337 SQ.M
76.250 X 82.450 X 1 NO.	=	2539.262 SQ.M
77.250 X 83.250 X 1 NO.	=	2573.187 SQ.M
78.250 X 84.050 X 1 NO.	=	2607.112 SQ.M
79.250 X 84.850 X 1 NO.	=	2641.037 SQ.M
80.250 X 85.650 X 1 NO.	=	2674.962 SQ.M
81.250 X 86.450 X 1 NO.	=	2708.887 SQ.M
82.250 X 87.250 X 1 NO.	=	2742.812 SQ.M
83.250 X 88.050 X 1 NO.	=	2776.737 SQ.M
84.250 X 88.850 X 1 NO.	=	2810.662 SQ.M
85.250 X 89.650 X 1 NO.	=	2844.587 SQ.M
86.250 X 90.450 X 1 NO.	=	2878.512 SQ.M
87.250 X 91.250 X 1 NO.	=	2912.437 SQ.M
88.250 X 92.050 X 1 NO.	=	2946.362 SQ.M
89.250 X 92.850 X 1 NO.	=	2980.287 SQ.M
90.250 X 93.650 X 1 NO.	=	3014.212 SQ.M
91.250 X 94.450 X 1 NO.	=	3048.137 SQ.M
92.250 X 95.250 X 1 NO.	=	3082.062 SQ.M
93.250 X 96.050 X 1 NO.	=	3115.987 SQ.M
94.250 X 96.850 X 1 NO.	=	3149.912 SQ.M
95.250 X 97.650 X 1 NO.	=	3183.837 SQ.M
96.250 X 98.450 X 1 NO.	=	3217.762 SQ.M
97.250 X 99.250 X 1 NO.	=	3251.687 SQ.M
98.250 X 100.050 X 1 NO.	=	3285.612 SQ.M
99.250 X 100.850 X 1 NO.	=	3319.537 SQ.M
100.250 X 101.650 X 1 NO.	=	3353.462 SQ.M
101.250 X 102.450 X 1 NO.	=	3387.387 SQ.M
102.250 X 103.250 X 1 NO.	=	3421.312 SQ.M
103.250 X 104.050 X 1 NO.	=	3455.237 SQ.M
104.250 X 104.850 X 1 NO.	=	3489.162 SQ.M
105.250 X 105.650 X 1 NO.	=	3523.087 SQ.M
106.250 X 106.450 X 1 NO.	=	3557.012 SQ.M
107.250 X 107.250 X 1 NO.	=	3590.937 SQ.M
108.250 X 108.050 X 1 NO.	=	3624.862 SQ.M
109.250 X 108.850 X 1 NO.	=	3658.787 SQ.M
110.250 X 109.650 X 1 NO.	=	3692.712 SQ.M
111.250 X 110.450 X 1 NO.	=	3726.637 SQ.M
112.250 X 111.250 X 1 NO.	=	3760.562 SQ.M
113.250 X 112.050 X 1 NO.	=	3794.487 SQ.M
114.250 X 112.850 X 1 NO.	=	3828.412 SQ.M
115.250 X 113.650 X 1 NO.	=	3862.337 SQ.M
116.250 X 114.450 X 1 NO.	=	3896.262 SQ.M
117.250 X 115.250 X 1 NO.	=	3930.187 SQ.M
118.250 X 116.050 X 1 NO.	=	3964.112 SQ.M
119.250 X 116.850 X 1 NO.	=	3998.037 SQ.M
120.250 X 117.650 X 1 NO.	=	4031.962 SQ.M
121.250 X 118.450 X 1 NO.	=	4065.887 SQ.M
122.250 X 119.250 X 1 NO.	=	4100.012 SQ.M
123.250 X 120.050 X 1 NO.	=	4133.937 SQ.M
124.250 X 120.850 X 1 NO.	=	4167.862 SQ.M
125.250 X 121.650 X 1 NO.	=	4201.787 SQ.M
126.250 X 122.450 X 1 NO.	=	4235.712 SQ.M
127.250 X 123.250 X 1 NO.	=	4269.637 SQ.M
128.250 X 124.050 X 1 NO.	=	4303.562 SQ.M
129.250 X 124.850 X 1 NO.	=	4337.487 SQ.M
130.250 X 125.650 X 1 NO.	=	4371.412 SQ.M
131.250 X 126.450 X 1 NO.	=	4405.337 SQ.M
132.250 X 127.250 X 1 NO.	=	4439.262 SQ.M
133.250 X 128.050 X 1 NO.	=	4473.187 SQ.M
134.250 X 128.850 X 1 NO.	=	4507.112 SQ.M
135.250 X 129.650 X 1 NO.	=	4541.037 SQ.M
136.250 X 130.450 X 1 NO.	=	4574.962 SQ.M
137.250 X 131.250 X 1 NO.	=	4608.887 SQ.M
138.250 X 132.050 X 1 NO.	=	4642.812 SQ.M
139.250 X 132.850 X 1 NO.	=	4676.737 SQ.M
140.250 X 133.650 X 1 NO.	=	4710.662 SQ.M
141.250 X 134.450 X 1 NO.	=	4744.587 SQ.M
142.250 X 135.250 X 1 NO.	=	4778.512 SQ.M
143.250 X 136.050 X 1 NO.	=	4812.437 SQ.M
144.250 X 136.850 X 1 NO.	=	4846.362 SQ.M
145.250 X 137.650 X 1 NO.	=	4880.287 SQ.M
146.250 X 138.450 X 1 NO.	=	4914.212 SQ.M
147.250 X 139.250 X 1 NO.	=	4948.137 SQ.M
148.250 X 140.050 X 1 NO.	=	4982.062 SQ.M
149.250 X 140.850 X 1 NO.	=	5015.987 SQ.M
150.250 X 141.650 X 1 NO.	=	5049.912 SQ.M
151.250 X 142.450 X 1 NO.	=	5083.837 SQ.M
152.250 X 143.250 X 1 NO.	=	5117.762 SQ.M
153.250 X 144.050 X 1 NO.	=	5151.687 SQ.M
154.250 X 144.850 X 1 NO.	=	5185.612 SQ.M
155.250 X 145.650 X 1 NO.	=	5219.537 SQ.M
156.250 X 146.450 X 1 NO.	=	5253.462 SQ.M
157.250 X 147.250 X 1 NO.	=	5287.387 SQ.M
158.250 X 148.050 X 1 NO.	=	5321.312 SQ.M
159.250 X 148.850 X 1 NO.	=	5355.237 SQ.M
160.250 X 149.650 X 1 NO.	=	5389.162 SQ.M
161.250 X 150.450 X 1 NO.	=	5423.087 SQ.M
162.250 X 151.250 X 1 NO.	=	5457.012 SQ.M
163.250 X 152.050 X 1 NO.	=	5490.937 SQ.M
164.250 X 152.850 X 1 NO.	=	5524.862 SQ.M
165.250 X 153.650 X 1 NO.	=	5558.787 SQ.M
166.250 X 154.450 X 1 NO.	=	5592.712 SQ.M
167.250 X 155.250 X 1 NO.	=	5626.637 SQ.M
168.250 X 156.050 X 1 NO.	=	5660.562 SQ.M
169.250 X 156.850 X 1 NO.	=	5694.487 SQ.M
170.250 X 157.650 X 1 NO.	=	5728.412 SQ.M
171.250 X 158.450 X 1 NO.	=	5762.337 SQ.M
172.250 X 159.250 X 1 NO.	=	5796.262 SQ.M
173.250 X 160.050 X 1 NO.	=	5830.187 SQ.M
174.250 X 160.850 X 1 NO.	=	5864.112 SQ.M
175.250 X 161.650 X 1 NO.	=	5898.037 SQ.M
176.250 X 162.450 X 1 NO.	=	5931.962 SQ.M
177.250 X 163.250 X 1 NO.	=	5965.887 SQ.M
178.250 X 164.050 X 1 NO.	=	5999.812 SQ.M
179.250 X 164.850 X 1 NO.	=	6033.737 SQ.M
180.250 X 165.650 X 1 NO.	=	6067.662 SQ.M
181.250 X 166.450 X 1 NO.	=	6101.587 SQ.M
182.250 X 167.250 X 1 NO.	=	6135.512 SQ.M
183.250 X 168.050 X 1 NO.	=	6169.437 SQ.M
184.250 X 168.850 X 1 NO.	=	6203.362 SQ.M
185.250 X 169.650 X 1 NO.	=	6237.287 SQ.M
186.250 X 170.450 X 1 NO.	=	6271.212 SQ.M
187.250 X 171.250 X 1 NO.	=	6305.137 SQ.M
188.250 X 172.050 X 1 NO.	=	6339.062 SQ.M
189.250 X 172.850 X 1 NO.	=	6372.987 SQ.M
190.250 X 173.650 X 1 NO.	=	6406.912 SQ.M
191.250 X 174.450 X 1 NO.	=	6440.837 SQ.M
192.250 X 175.250 X 1 NO.	=	6474.762 SQ.M
193.250 X 176.050 X 1 NO.	=	6508.687 SQ.M
194.250 X 176.850 X 1 NO.	=	6542.612 SQ.M
195.250 X 177.650 X 1 NO.	=	6576.537 SQ.M
196.250 X 178.450 X 1 NO.	=	6610.462 SQ.M
197.250 X 179.250 X 1 NO.	=	6644.387 SQ.M
198.250 X 180.050 X 1 NO.	=	6678.312 SQ.M
199.250 X 180.850 X 1 NO.	=	6712.237 SQ.M
200.250 X 181.650 X 1 NO.	=	6746.162 SQ.M
201.250 X 182.450 X 1 NO.	=	6780.087 SQ.M
202.250 X 183.250 X 1 NO.	=	6814.012 SQ.M
203.250 X 184.050 X 1 NO.	=	6847.937 SQ.M
204.250 X 184.850 X 1 NO.	=	6881.862 SQ.M
205.250 X 185.650 X 1 NO.	=	6915.787 SQ.M
206.250 X 186.450 X 1 NO.	=	6949.712 SQ.M
207.250 X 187.250 X 1 NO.	=	6983.637 SQ.M
208.250 X 188.050 X 1 NO.	=	7017.562 SQ.M
209.250 X 188.850 X 1 NO.	=	7051.487 SQ.M
210.250 X 189.650 X 1 NO.	=	7085.412 SQ.M
211.250 X 190.450 X 1 NO.	=	7119.337 SQ.M
212.250 X 191.250 X 1 NO.	=	7153.262 SQ.M
213.250 X 192.050 X 1 NO.	=	7187.187 SQ.M
214.250 X 192.850 X 1 NO.	=	7221.112 SQ.M
215.250 X 193		