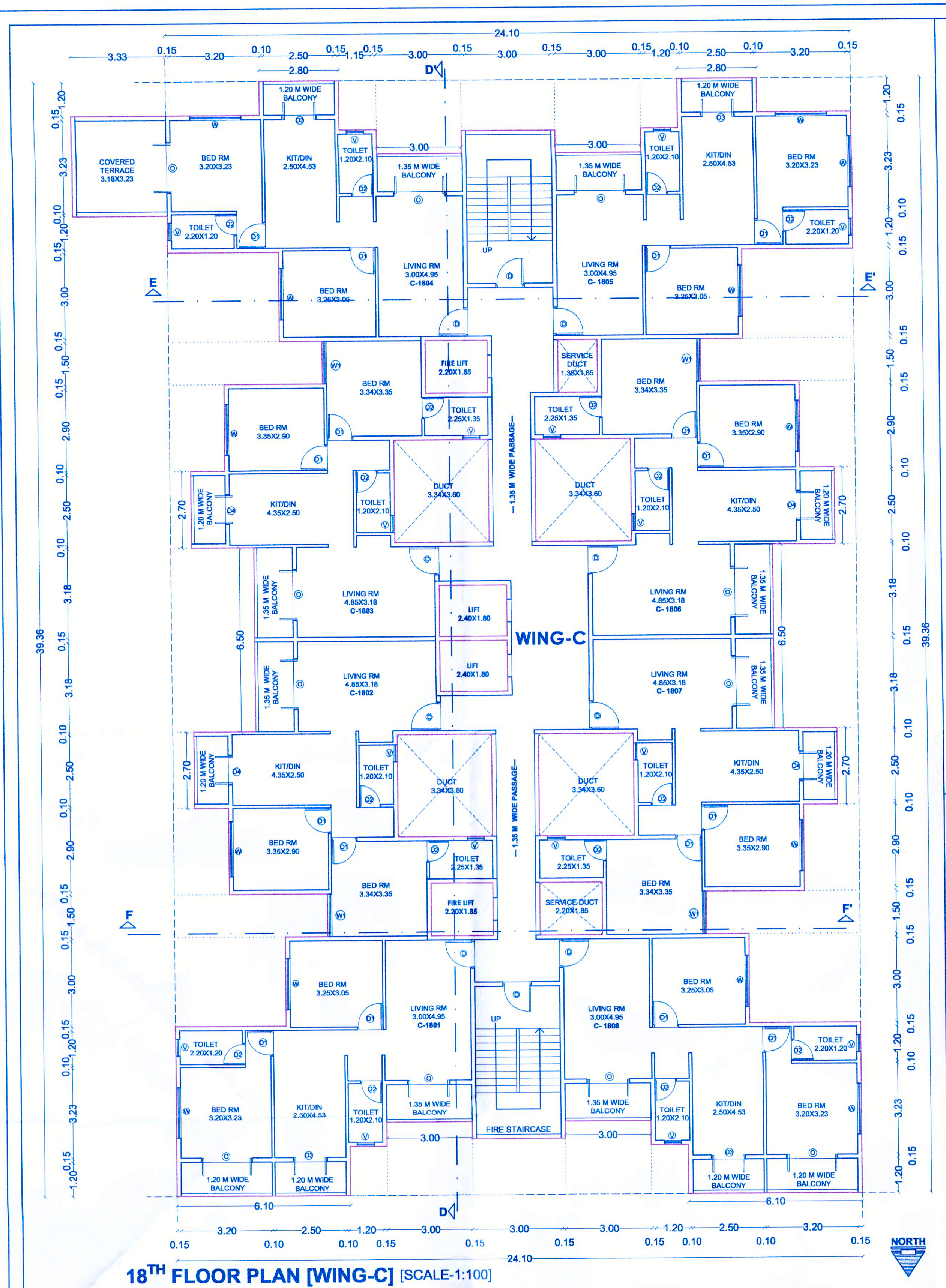


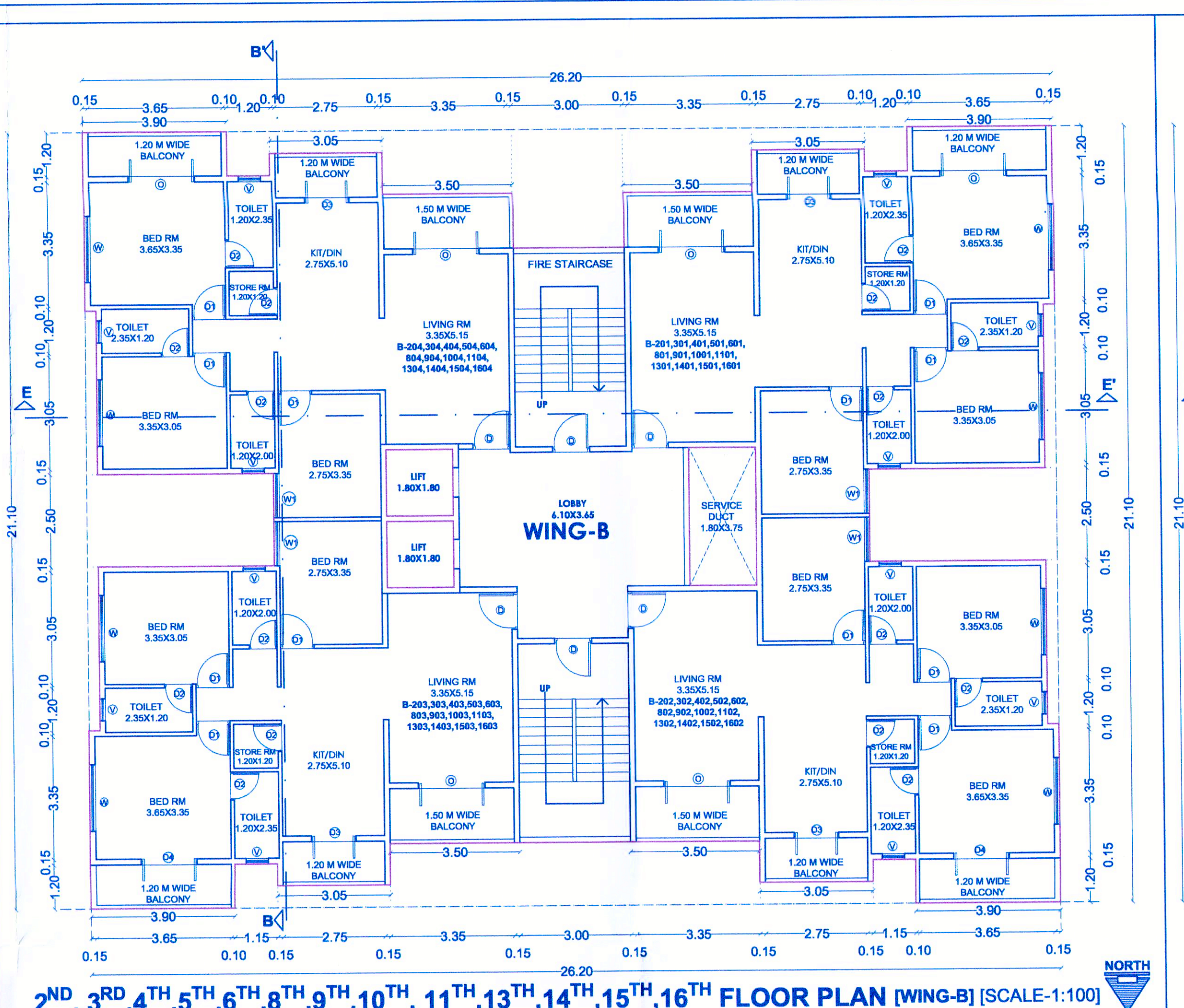
APPROVED
The Plans amended in
As per the conditions mentioned in the accompanying commencement Certificate No. dated
C1/493/2021 03/03/2022

Executive Engineer
TOWN PLANNING
Nashik Municipal Corporation
Nashik

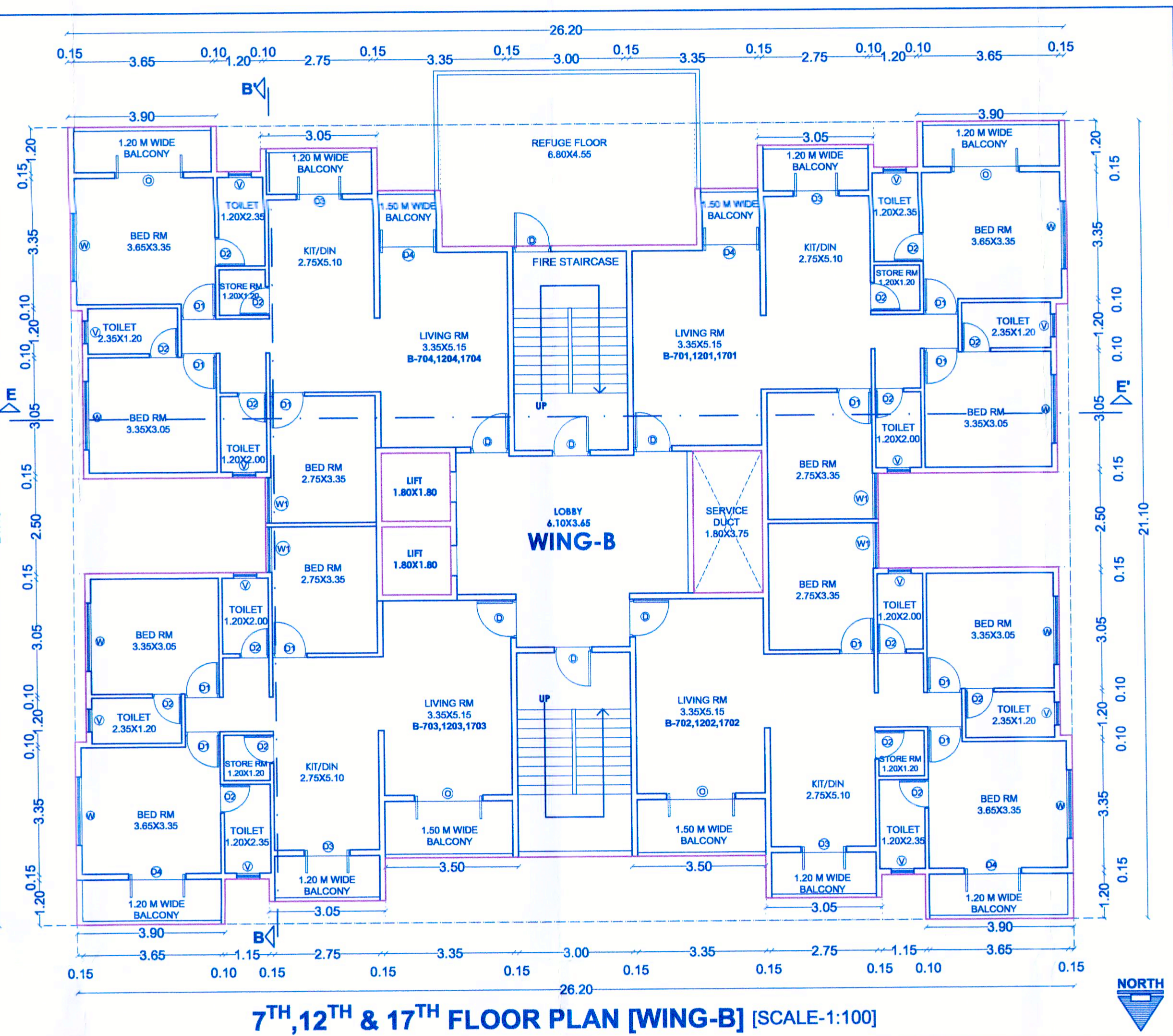
Stamp of Engineer



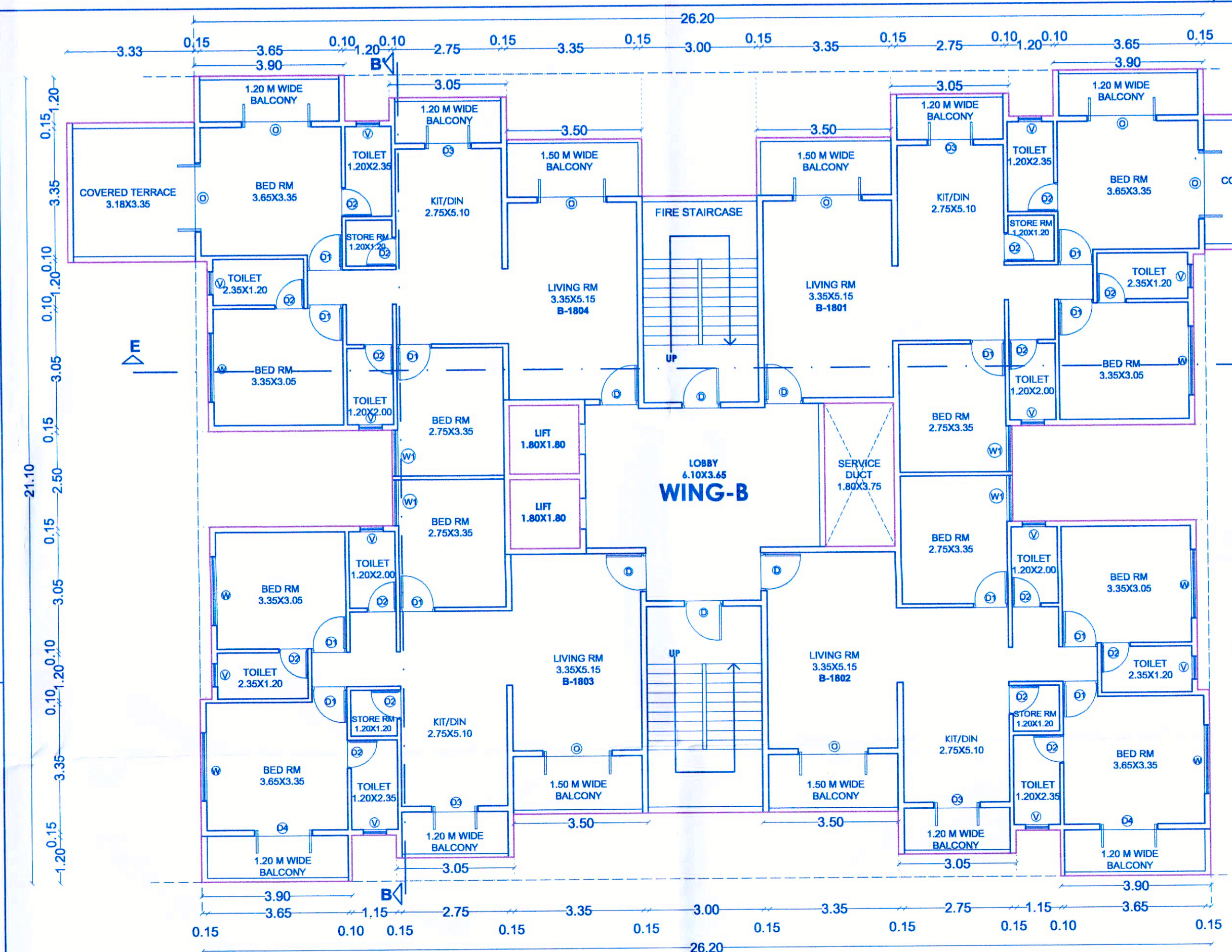
18TH FLOOR PLAN [WING-C] [SCALE:1:100]



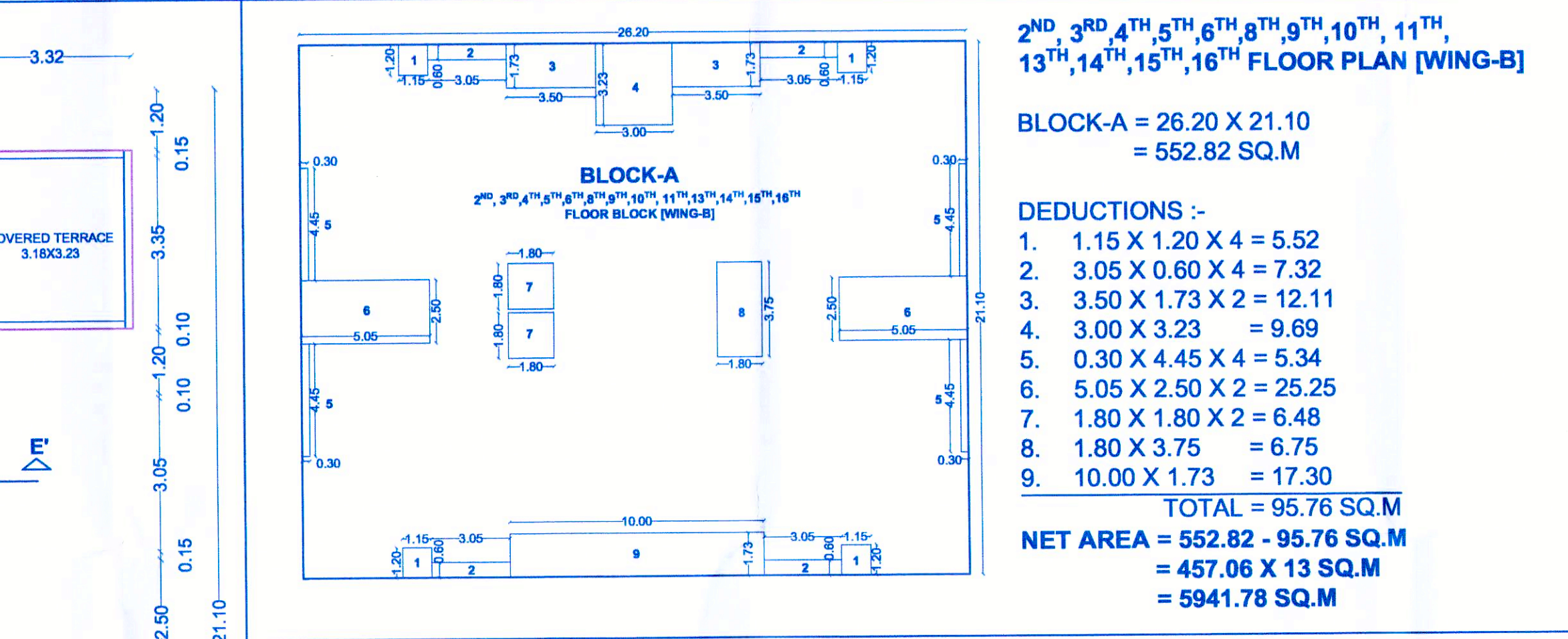
2ND, 3RD, 4TH, 5TH, 6TH, 8TH, 9TH, 10TH, 11TH, 13TH, 14TH, 15TH, 16TH FLOOR PLAN [WING-B] [SCALE:1:100]



7TH, 12TH & 17TH FLOOR PLAN [WING-B] [SCALE:1:100]

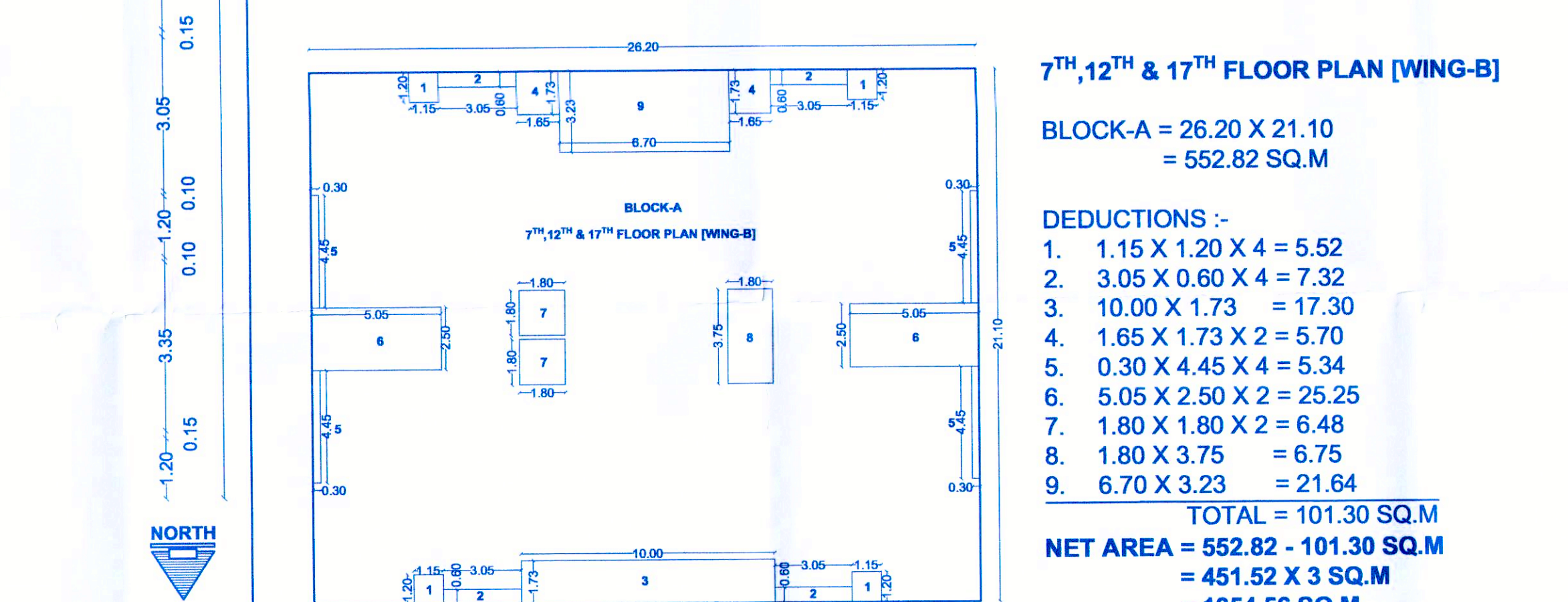


18TH FLOOR PLAN [WING-B] [SCALE:1:100]



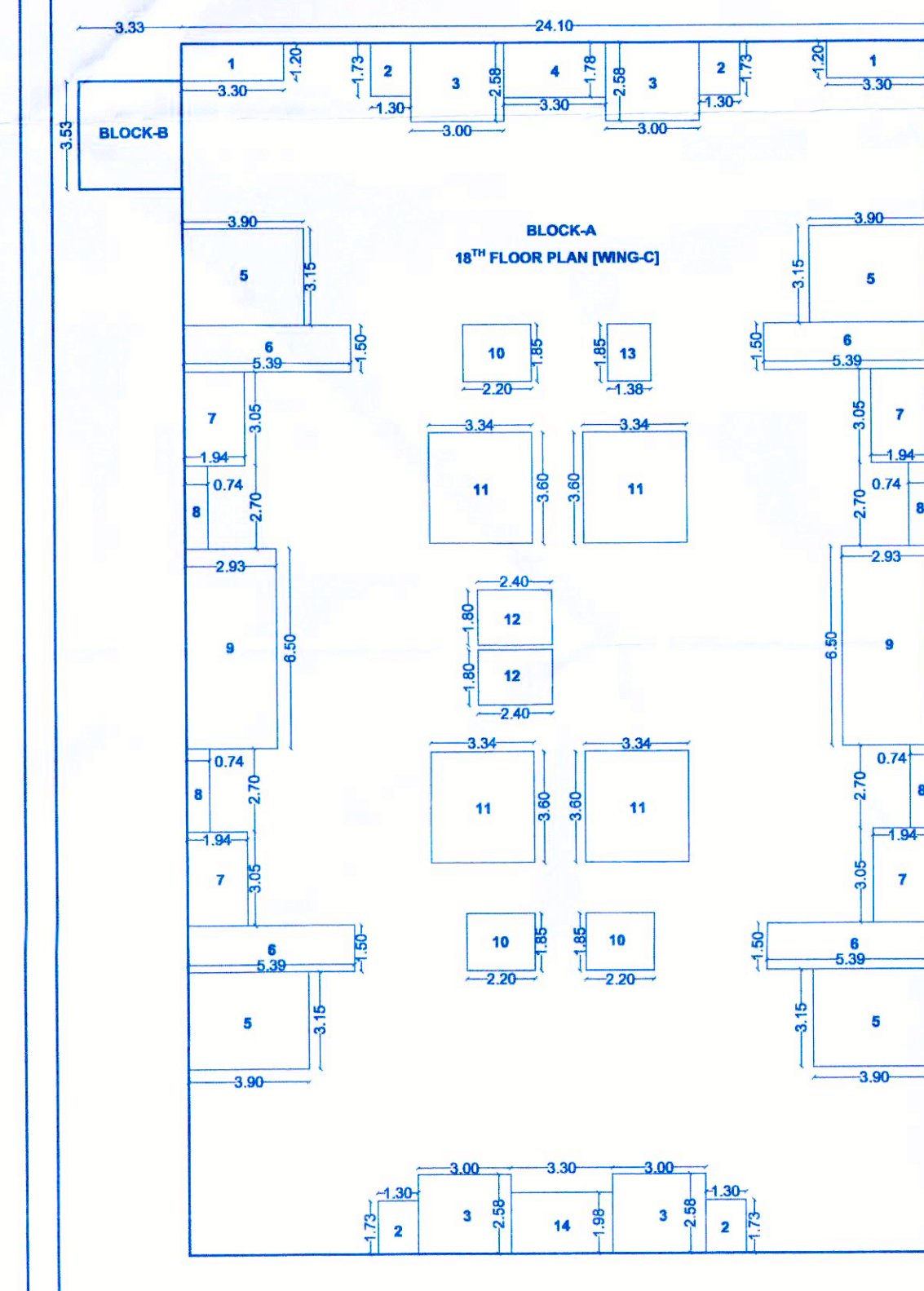
2ND, 3RD, 4TH, 5TH, 6TH, 8TH, 9TH, 10TH, 11TH, 13TH, 14TH, 15TH, 16TH FLOOR PLAN [WING-B]

BLOCK-A = 26.20 X 21.10 = 552.82 SQ.M
DEDUCTIONS :-
1. 1.15 X 1.20 X 4 = 5.52
2. 3.05 X 0.60 X 4 = 7.32
3. 3.50 X 1.73 X 2 = 12.11
4. 3.00 X 3.23 = 9.69
5. 0.30 X 4.45 X 4 = 5.34
6. 5.05 X 2.50 X 2 = 25.25
7. 1.80 X 1.80 X 2 = 6.48
8. 1.80 X 3.75 = 6.75
9. 10.00 X 1.73 = 17.30
TOTAL = 95.76 SQ.M
NET AREA = 552.82 - 95.76 SQ.M = 457.06 X 13 SQ.M = 5941.78 SQ.M



7TH, 12TH & 17TH FLOOR PLAN [WING-B]

BLOCK-A = 26.20 X 21.10 = 552.82 SQ.M
DEDUCTIONS :-
1. 1.15 X 1.20 X 4 = 5.52
2. 3.05 X 0.60 X 4 = 7.32
3. 10.00 X 1.73 = 17.30
4. 1.65 X 1.73 X 2 = 5.70
5. 0.30 X 4.45 X 4 = 5.34
6. 5.05 X 2.50 X 2 = 25.25
7. 1.80 X 1.80 X 2 = 6.48
8. 1.80 X 3.75 = 6.75
9. 6.70 X 3.23 = 21.64
TOTAL = 101.30 SQ.M
NET AREA = 552.82 - 101.30 SQ.M = 451.52 X 3 SQ.M = 1354.56 SQ.M



18TH FLOOR PLAN [WING-C]
BLOCK-A = 24.10 X 39.36 = 948.57 SQ.M
BLOCK-B = 3.33 X 3.53 = 11.75 SQ.M
TOTAL BLOCK A+B = 960.32 SQ.M

DEDUCTIONS :-
1. 3.30 X 1.20 X 2 = 7.92
2. 1.30 X 1.73 X 4 = 8.99
3. 3.00 X 2.58 X 4 = 30.96
4. 3.30 X 1.78 = 5.87
5. 3.90 X 3.15 X 4 = 49.14
6. 5.39 X 1.50 X 4 = 32.34
7. 1.94 X 3.05 X 4 = 23.66
8. 0.74 X 2.70 X 4 = 7.99
9. 2.93 X 3.60 X 2 = 38.09
10. 2.20 X 1.85 X 3 = 12.21
11. 3.34 X 3.60 X 4 = 48.09
12. 2.40 X 1.80 X 2 = 8.64
13. 1.38 X 1.85 = 2.55
14. 3.30 X 1.98 = 6.53
TOTAL = 282.98 SQ.M
NET AREA = 960.32 - 282.98 SQ.M = 677.34 SQ.M

FROM FOR STATEMENT 3 [SR.NO.9(G)]					
BUILDING NO.	FLOOR NO.	APARTMENT NO.	CARPET AREA OF APARTMENT	AREA OF BALCONY ATTACHED TO APARTMENT	AREA OF DOUBLE HEIGHT TERRACE ATTACHED TO FLATS
WING B	1 ST FLOOR	B-101	80.40 SQ.M		
		B-102	80.40 SQ.M		
		B-103	80.40 SQ.M		
WING B	2 ND , 3 RD , 4 TH , 5 TH , 6 TH , 8 TH , 9 TH , 10 TH , 11 TH , 13 TH , 14 TH , 15 TH , 16 TH FLOOR	B-201, 201A, 201B, 201C, 201D, 201E, 201F, 201G, 201H, 201I, 201J, 201K, 201L, 201M, 201N, 201O, 201P, 201Q, 201R, 201S, 201T, 201U, 201V, 201W, 201X, 201Y, 201Z	80.40 SQ.M	11.74 SQ.M	
		B-301, 301A, 301B, 301C, 301D, 301E, 301F, 301G, 301H, 301I, 301J, 301K, 301L, 301M, 301N, 301O, 301P, 301Q, 301R, 301S, 301T, 301U, 301V, 301W, 301X, 301Y, 301Z	80.40 SQ.M	11.74 SQ.M	
		B-401, 401A, 401B, 401C, 401D, 401E, 401F, 401G, 401H, 401I, 401J, 401K, 401L, 401M, 401N, 401O, 401P, 401Q, 401R, 401S, 401T, 401U, 401V, 401W, 401X, 401Y, 401Z	80.40 SQ.M	11.74 SQ.M	
		B-501, 501A, 501B, 501C, 501D, 501E, 501F, 501G, 501H, 501I, 501J, 501K, 501L, 501M, 501N, 501O, 501P, 501Q, 501R, 501S, 501T, 501U, 501V, 501W, 501X, 501Y, 501Z	80.40 SQ.M	11.74 SQ.M	
		B-601, 601A, 601B, 601C, 601D, 601E, 601F, 601G, 601H, 601I, 601J, 601K, 601L, 601M, 601N, 601O, 601P, 601Q, 601R, 601S, 601T, 601U, 601V, 601W, 601X, 601Y, 601Z	80.40 SQ.M	11.74 SQ.M	
		B-701, 701A, 701B, 701C, 701D, 701E, 701F, 701G, 701H, 701I, 701J, 701K, 701L, 701M, 701N, 701O, 701P, 701Q, 701R, 701S, 701T, 701U, 701V, 701W, 701X, 701Y, 701Z	80.40 SQ.M	11.74 SQ.M	
		B-801, 801A, 801B, 801C, 801D, 801E, 801F, 801G, 801H, 801I, 801J, 801K, 801L, 801M, 801N, 801O, 801P, 801Q, 801R, 801S, 801T, 801U, 801V, 801W, 801X, 801Y, 801Z	80.40 SQ.M	11.74 SQ.M	
		B-901, 901A, 901B, 901C, 901D, 901E, 901F, 901G, 901H, 901I, 901J, 901K, 901L, 901M, 901N, 901O, 901P, 901Q, 901R, 901S, 901T, 901U, 901V, 901W, 901X, 901Y, 901Z	80.40 SQ.M	11.74 SQ.M	
		B-1001, 1001A, 1001B, 1001C, 1001D, 1001E, 1001F, 1001G, 1001H, 1001I, 1001J, 1001K, 1001L, 1001M, 1001N, 1001O, 1001P, 1001Q, 1001R, 1001S, 1001T, 1001U, 1001V, 1001W, 1001X, 1001Y, 1001Z	80.40 SQ.M	11.74 SQ.M	
		B-1101, 1101A, 1101B, 1101C, 1101D, 1101E, 1101F, 1101G, 1101H, 1101I, 1101J, 1101K, 1101L, 1101M, 1101N, 1101O, 1101P, 1101Q, 1101R, 1101S, 1101T, 1101U, 1101V, 1101W, 1101X, 1101Y, 1101Z	80.40 SQ.M	11.74 SQ.M	
		B-1201, 1201A, 1201B, 1201C, 1201D, 1201E, 1201F, 1201G, 1201H, 1201I, 1201J, 1201K, 1201L, 1201M, 1201N, 1201O, 1201P, 1201Q, 1201R, 1201S, 1201T, 1201U, 1201V, 1201W, 1201X, 1201Y, 1201Z	80.40 SQ.M	11.74 SQ.M	
		B-1301, 1301A, 1301B, 1301C, 1301D, 1301E, 1301F, 1301G, 1301H, 1301I, 1301J, 1301K, 1301L, 1301M, 1301N, 1301O, 1301P, 1301Q, 1301R, 1301S, 1301T, 1301U, 1301V, 1301W, 1301X, 1301Y, 1301Z	80.40 SQ.M	11.74 SQ.M	
B-1401, 1401A, 1401B, 1401C, 1401D, 1401E, 1401F, 1401G, 1401H, 1401I, 1401J, 1401K, 1401L, 1401M, 1401N, 1401O, 1401P, 1401Q, 1401R, 1401S, 1401T, 1401U, 1401V, 1401W, 1401X, 1401Y, 1401Z	80.40 SQ.M	11.74 SQ.M			
B-1501, 1501A, 1501B, 1501C, 1501D, 1501E, 1501F, 1501G, 1501H, 1501I, 1501J, 1501K, 1501L, 1501M, 1501N, 1501O, 1501P, 1501Q, 1501R, 1501S, 1501T, 1501U, 1501V, 1501W, 1501X, 1501Y, 1501Z	80.40 SQ.M	11.74 SQ.M			
B-1601, 1601A, 1601B, 1601C, 1601D, 1601E, 1601F, 1601G, 1601H, 1601I, 1601J, 1601K, 1601L, 1601M, 1601N, 1601O, 1601P, 1601Q, 1601R, 1601S, 1601T, 1601U, 1601V, 1601W, 1601X, 1601Y, 1601Z	80.40 SQ.M	11.74 SQ.M			
B-1701, 1701A, 1701B, 1701C, 1701D, 1701E, 1701F, 1701G, 1701H, 1701I, 1701J, 1701K, 1701L, 1701M, 1701N, 1701O, 1701P, 1701Q, 1701R, 1701S, 1701T, 1701U, 1701V, 1701W, 1701X, 1701Y, 1701Z	80.40 SQ.M	11.74 SQ.M			
B-1801, 1801A, 1801B, 1801C, 1801D, 1801E, 1801F, 1801G, 1801H, 1801I, 1801J, 1801K, 1801L, 1801M, 1801N, 1801O, 1801P, 1801Q, 1801R, 1801S, 1801T, 1801U, 1801V, 1801W, 1801X, 1801Y, 1801Z	80.40 SQ.M	11.74 SQ.M			
B-1901, 1901A, 1901B, 1901C, 1901D, 1901E, 1901F, 1901G, 1901H, 1901I, 1901J, 1901K, 1901L, 1901M, 1901N, 1901O, 1901P, 1901Q, 1901R, 1901S, 1901T, 1901U, 1901V, 1901W, 1901X, 1901Y, 1901Z	80.40 SQ.M	11.74 SQ.M			
B-2001, 2001A, 2001B, 2001C, 2001D, 2001E, 2001F, 2001G, 2001H, 2001I, 2001J, 2001K, 2001L, 2001M, 2001N, 2001O, 2001P, 2001Q, 2001R, 2001S, 2001T, 2001U, 2001V, 2001W, 2001X, 2001Y, 2001Z	80.40 SQ.M	11.74 SQ.M			
TOTAL			8052.70 SQ.M		

FROM FOR STATEMENT 2 [SR.NO.8(A)]		
BUILDING NO.	FLOOR NO.	TOTAL BUILT-UP AREA OF FLOOR, AS PER OUTER CONSTRUCTION LINE.
WING B	FIRST FLOOR	441.61 SQ.M
	SECOND FLOOR	441.61 SQ.M
	THIRD FLOOR	441.61 SQ.M
	FOURTH FLOOR	441.61 SQ.M
	FIFTH FLOOR	441.61 SQ.M
	SIXTH FLOOR	441.61 SQ.M
	SEVENTH FLOOR	441.61 SQ.M
	EIGHTH FLOOR	441.61 SQ.M
	NINTH FLOOR	441.61 SQ.M
	TENTH FLOOR	441.61 SQ.M
	ELEVENTH FLOOR	441.61 SQ.M
	TWELFTH FLOOR	441.61 SQ.M
	THIRTEENTH FLOOR	441.61 SQ.M
	FOURTEENTH FLOOR	441.61 SQ.M
	FIFTEENTH FLOOR	441.61 SQ.M
	SIXTEENTH FLOOR	441.61 SQ.M
	SEVENTEENTH FLOOR	441.61 SQ.M
	EIGHTEENTH FLOOR	441.61 SQ.M
TOTAL	8052.70 SQ.M	

TOTAL B/UP AREA OF WING - B	
1. FIRST FLOOR	= 457.06 SQ.M
2. SECOND FLOOR	= 457.06 SQ.M
3. THIRD FLOOR	= 457.06 SQ.M
4. FOURTH FLOOR	= 457.06 SQ.M
5. FIFTH FLOOR	= 457.06 SQ.M
6. SIXTH FLOOR	= 457.06 SQ.M
7. SEVENTH FLOOR	= 457.06 SQ.M
8. EIGHTH FLOOR	= 457.06 SQ.M
9. NINTH FLOOR	= 457.06 SQ.M
10. TENTH FLOOR	= 457.06 SQ.M
11. ELEVENTH FLOOR	= 457.06 SQ.M
12. TWELFTH FLOOR	= 457.06 SQ.M
13. THIRTEENTH FLOOR	= 457.06 SQ.M
14. FOURTEENTH FLOOR	= 457.06 SQ.M
15. FIFTEENTH FLOOR	= 457.06 SQ.M
16. SIXTEENTH FLOOR	= 457.06 SQ.M
17. SEVENTEENTH FLOOR	= 457.06 SQ.M
18. EIGHTEENTH FLOOR	= 480.92 SQ.M
19. LIFT	= 6.48 SQ.M
TOTAL	= 8240.80 SQ.M

OWNER SIGN: M/s. OMKAR BUILDCON PARTNER

R.C.C. CONSULTANT: AR. SURESH N. PATEL

ARCHITECT'S SIGN: AR. SURESH N. PATEL

PROJECT: PROPOSED RESIDENTIAL CUM COMMERCIAL BUILDING PLOT NO: -33+34+35+36, S. NO. :- 163/1 AT, NASHIK SHIWAR, NASHIK FOR OMKAR BUILDCON PARTNERSHIP FIRM THROUGH PARTNER MR. NARENDRA NANJI SOMANI AND OTHERS

ARCHITECT: MAVANI ASSOCIATES, AR. SURESH N. PATEL, SHOP NO-182 SHUBHANKAR VASTU, DHAWALI GRI SOCIETY, KATHE DALI, NASHIK-422001, PH: (+91) 9929222626, MR. - 9989299494, sureshpate1@gmail.com

SCALE: 1:100, DATE: 02/01/2021, DRG. NO: 69, DRAWN BY: APURVA, CHECK BY: AR. SURESH PATEL