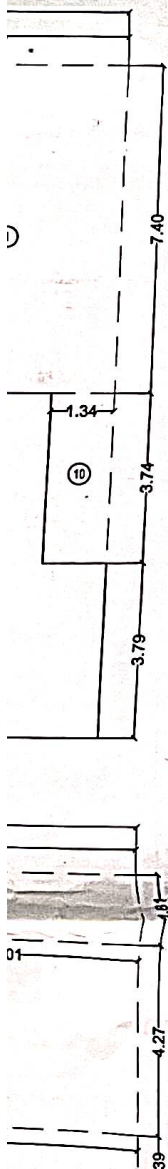
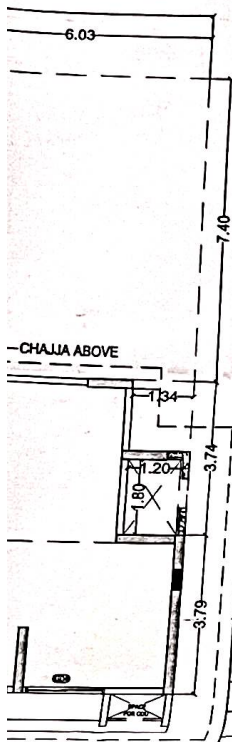


Rum Paly



**BUILT-UP AREA CALCULATION - GROUND FLOOR**

AREA OF THE BLOCK						
91.35	X	14.93	X	1	=	1363.86 SQMT.
TOTAL AREA =						1363.86 SQMT.

STANDARD DEDUCTION						
1	6.03	X	7.40	X	2	= 89.24 SQMT.
2	6.10	X	1.81	X	2	= 22.08 SQMT.
3	0.81	X	1.80	X	1	= 1.46 SQMT.
4	1.90	X	1.72	X	1	= 3.27 SQMT.
5	24.36	X	1.81	X	1	= 44.09 SQMT.
6	3.72	X	1.92	X	1	= 7.14 SQMT.
8	24.02	X	1.81	X	1	= 43.48 SQMT.
9	0.83	X	1.32	X	1	= 1.10 SQMT.
10	1.34	X	3.74	X	1	= 5.01 SQMT.
V1	1.39	X	1.54	X	1	= 2.14 SQMT.
V2	14.39	X	1.54	X	1	= 22.16 SQMT.
V3	1.60	X	1.97	X	1	= 3.15 SQMT.
V4	1.86	X	2.10	X	1	= 3.91 SQMT.
V5	1.17	X	3.71	X	1	= 4.34 SQMT.
V6	1.12	X	1.55	X	2	= 3.47 SQMT.
V7	1.00	X	2.24	X	2	= 4.48 SQMT.
V8	0.59	X	2.04	X	2	= 2.41 SQMT.
V9	1.25	X	3.57	X	1	= 4.46 SQMT.
V10	1.15	X	4.27	X	1	= 4.91 SQMT.
V11	1.94	X	1.33	X	1	= 2.58 SQMT.
V12	1.39	X	1.75	X	1	= 2.43 SQMT.
V13	1.29	X	2.02	X	1	= 2.61 SQMT.
V14	12.10	X	1.55	X	1	= 18.76 SQMT.
V15	1.26	X	5.59	X	1	= 7.04 SQMT.
D1	0.82	X	1.38	X	1	= 1.13 SQMT.
D2	0.70	X	1.55	X	1	= 1.09 SQMT.
D3	0.90	X	0.63	X	1	= 0.57 SQMT.
D4	2.54	X	2.02	X	1	= 5.13 SQMT.
D5	0.82	X	1.53	X	1	= 1.25 SQMT.
D6	0.70	X	1.70	X	1	= 1.19 SQMT.
L1	1.90	X	1.90	X	3	= 10.83 SQMT.
L2	2.60	X	1.90	X	3	= 14.82 SQMT.

TOTAL DEDUCTION AREA	=	341.73 SQMT.
GROSS AREA (A - B)	=	1022.13 SQMT.

**METER ROOM CALCULATION**

M1	3.47	X	3.79	X	1	= 13.15 SQMT.
M2	2.66	X	1.87	X	1	= 4.97 SQMT.
M3	2.03	X	1.54	X	1	= 3.13 SQMT.
M4	3.03	X	4.27	X	1	= 12.94 SQMT.
M5	2.23	X	1.54	X	1	= 3.43 SQMT.
M6	0.86	X	0.78	X	1	= 0.67 SQMT.
M7	1.76	X	1.35	X	1	= 2.45 SQMT.
M8	3.43	X	1.55	X	1	= 5.32 SQMT.
M9	2.96	X	2.24	X	1	= 6.63 SQMT.
M10	2.65	X	2.02	X	1	= 5.35 SQMT.
M11	2.03	X	1.69	X	1	= 3.43 SQMT.

TOTAL METER ROOM AREA	=	61.47 SQMT.
-----------------------	---	-------------

**STILT AREA CALCULATION**

S1	1.90	X	5.81	X	1	= 11.04 SQMT.
S2	28.42	X	7.53	X	1	= 214.00 SQMT.

**PROFORMA - B N/54**

DESCRIPTION OF SHEET  
 SECTOR : SECTOR O  
 BUILDING TYPE : RBY1  
 NO. OF FLOORS : G + 14 FLOORS  
 CLUSTER NO : CLUSTER 15.07 (WING A,B,C)

GROUND FLOOR, TYPICAL FLOOR (1ST TO 7TH, 9TH TO 12TH & 14TH ) PLAN, AREA DIAGRAM & CALCULATION

STAMP AND DATE OF APPROVAL OF PLAN

या कार्यालयाचे पर क्र. एकत्मिकृत नगरसाहत / मीजे अंतली, खोणी, हेदुणे, कोळे, घारिवली, कटई व माणगांव ता. कल्याण आणि मीजे उंबोली, ता. अंबरनाथ ससंठाणे ११८८ दिनांक ११/१२/१९ मधील शा. अधीन राहून हिरव्या रंगाने दुस्तो सुचवित्याप्रमाणे रविवास वापरसाठी नकाशा मंजूरी.



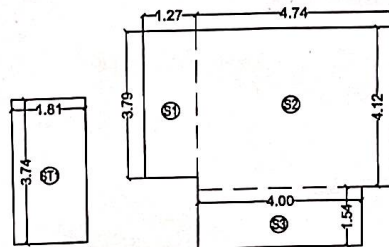
सहायक संचालक  
नगर रचना, ठाणे.

NO.	LOCATION	SIZE	UNIT	BILL	DESCRIPTION
D1	MAIN ENTRY	1600 X 2000	-	-	SINGLE LEAF FIRE RATED WOODEN FLUSH DOOR
D2	BED ROOM	800 X 2000	-	-	SINGLE LEAF WOODEN FLUSH DOOR
D3	TILESET	700 X 2200	-	-	SINGLE LEAF WOODEN FLUSH DOOR
D4	REARAGE DOOR	1400 X 2200	-	-	SINGLE LEAF WOODEN FLUSH DOOR
D5	STAIRCASE	1200 X 2200	-	-	SINGLE LEAF FIRE RATED METAL DOOR
D6	REFURGE DOOR	1000 X 2200	-	-	SINGLE LEAF FIRE RATED METAL DOOR
D7	FACTORY ROOM DOOR	1800 X 2200	-	-	SINGLE LEAF FIRE RATED METAL DOOR
D8	MAIN ENTRANCE - 10M	3000 X 2200	-	-	DOUBLE LEAF PARTLY FIRE RATED PARTLY OPERABLE GLASS DOOR
D9	AMBUTY / METAL	2100 X 2200	-	-	DOUBLE LEAF PARTLY FIRE RATED PARTLY OPERABLE GLASS DOOR
D10	AMBUTY / METAL	1800 X 2200	-	-	DOUBLE LEAF PARTLY FIRE RATED PARTLY OPERABLE GLASS DOOR
D11	AMBUTY / METAL - 20M	3000 X 2200	-	-	DOUBLE LEAF PARTLY FIRE RATED PARTLY OPERABLE GLASS DOOR
D12	AMBUTY / METAL	1800 X 2200	-	-	DOUBLE LEAF PARTLY FIRE RATED PARTLY OPERABLE GLASS DOOR
D13	AMBUTY / METAL	3000 X 2200	-	-	DOUBLE LEAF PARTLY FIRE RATED PARTLY OPERABLE GLASS DOOR
D14	AMBUTY / METAL	4400 X 2200	-	-	DOUBLE LEAF PARTLY FIRE RATED PARTLY OPERABLE GLASS DOOR
D15	AMBUTY / METAL	1800 X 2400	-	-	METAL ROLLING SHUTTER
D16	AMBUTY / METAL	2200 X 2400	-	-	METAL ROLLING SHUTTER
D17	AMBUTY / METAL	3000 X 2400	-	-	METAL ROLLING SHUTTER
D18	AMBUTY / METAL	3000 X 2400	-	-	METAL ROLLING SHUTTER
D19	AMBUTY / METAL	4400 X 2400	-	-	METAL ROLLING SHUTTER

NO.	LOCATION	SIZE	UNIT	BILL	DESCRIPTION
W1	AMBUTY ROOM	2270 X 2200	2200	CS	3 TRACK ALUMINUM BLEND WINDOW WITH FIXED BOTTOM PANEL IN LAMINATED GLASS
W2	BED ROOM	1700 X 2200	2200	CS	3 TRACK ALUMINUM BLEND WINDOW WITH FIXED BOTTOM PANEL IN LAMINATED GLASS
W3	TILESET	800 X 1800	2200	WB	3 TRACK ALUMINUM BLEND WINDOW WITH FIXED TOP PANEL
W4	REARAGE	700 X 1800	2200	WB	SINGLE BLUTTER OPERABLE GLASS PANEL WINDOW
W5	FACTORY	1800 X 1800	2200	WB	SINGLE BLUTTER OPERABLE GLASS PANEL WINDOW
W6	LEFT LOBBY	1800 X 1100	2200	WB	3 TRACK ALUMINUM BLEND WINDOW
W7	PANORAMA	1800 X 1100	2200	WB	3 TRACK ALUMINUM BLEND WINDOW
W8	PANORAMA	1800 X 1100	2200	WB	3 TRACK ALUMINUM BLEND WINDOW



DOOR SCHEDULE					DESCRIPTION
NO.	LOCATION	WIDTH	HEIGHT	GLASS	
B1	MAIN ENTRY	2000	2000	-	DOUBLE LEAF FWD PARTLY OPENABLE GLASS DOOR
B2	REAR DOOR	800	2000	-	DOUBLE LEAF REVERSE FLIGHT DOOR
B3	TOILET	700	2000	-	DOUBLE LEAF REVERSE FLIGHT DOOR
B4	REAR DOOR	1000	2000	-	DOUBLE LEAF REVERSE FLIGHT DOOR
T01	REAR DOOR	1000	2000	-	DOUBLE LEAF FWD PARTLY OPENABLE GLASS DOOR
T02	REAR DOOR	1000	2000	-	DOUBLE LEAF FWD PARTLY OPENABLE GLASS DOOR
T03	REAR DOOR	1000	2000	-	DOUBLE LEAF FWD PARTLY OPENABLE GLASS DOOR
T04	REAR DOOR	1000	2000	-	DOUBLE LEAF FWD PARTLY OPENABLE GLASS DOOR
T05	REAR DOOR	1000	2000	-	DOUBLE LEAF FWD PARTLY OPENABLE GLASS DOOR
T06	REAR DOOR	1000	2000	-	DOUBLE LEAF FWD PARTLY OPENABLE GLASS DOOR
T07	REAR DOOR	1000	2000	-	DOUBLE LEAF FWD PARTLY OPENABLE GLASS DOOR
T08	REAR DOOR	1000	2000	-	DOUBLE LEAF FWD PARTLY OPENABLE GLASS DOOR
T09	REAR DOOR	1000	2000	-	DOUBLE LEAF FWD PARTLY OPENABLE GLASS DOOR
T10	REAR DOOR	1000	2000	-	DOUBLE LEAF FWD PARTLY OPENABLE GLASS DOOR
T11	REAR DOOR	1000	2000	-	DOUBLE LEAF FWD PARTLY OPENABLE GLASS DOOR
T12	REAR DOOR	1000	2000	-	DOUBLE LEAF FWD PARTLY OPENABLE GLASS DOOR
T13	REAR DOOR	1000	2000	-	DOUBLE LEAF FWD PARTLY OPENABLE GLASS DOOR
T14	REAR DOOR	1000	2000	-	DOUBLE LEAF FWD PARTLY OPENABLE GLASS DOOR
T15	REAR DOOR	1000	2000	-	DOUBLE LEAF FWD PARTLY OPENABLE GLASS DOOR
T16	REAR DOOR	1000	2000	-	DOUBLE LEAF FWD PARTLY OPENABLE GLASS DOOR
T17	REAR DOOR	1000	2000	-	DOUBLE LEAF FWD PARTLY OPENABLE GLASS DOOR
T18	REAR DOOR	1000	2000	-	DOUBLE LEAF FWD PARTLY OPENABLE GLASS DOOR
T19	REAR DOOR	1000	2000	-	DOUBLE LEAF FWD PARTLY OPENABLE GLASS DOOR
T20	REAR DOOR	1000	2000	-	DOUBLE LEAF FWD PARTLY OPENABLE GLASS DOOR
T21	REAR DOOR	1000	2000	-	DOUBLE LEAF FWD PARTLY OPENABLE GLASS DOOR
T22	REAR DOOR	1000	2000	-	DOUBLE LEAF FWD PARTLY OPENABLE GLASS DOOR
T23	REAR DOOR	1000	2000	-	DOUBLE LEAF FWD PARTLY OPENABLE GLASS DOOR
T24	REAR DOOR	1000	2000	-	DOUBLE LEAF FWD PARTLY OPENABLE GLASS DOOR
T25	REAR DOOR	1000	2000	-	DOUBLE LEAF FWD PARTLY OPENABLE GLASS DOOR
T26	REAR DOOR	1000	2000	-	DOUBLE LEAF FWD PARTLY OPENABLE GLASS DOOR
T27	REAR DOOR	1000	2000	-	DOUBLE LEAF FWD PARTLY OPENABLE GLASS DOOR
T28	REAR DOOR	1000	2000	-	DOUBLE LEAF FWD PARTLY OPENABLE GLASS DOOR
T29	REAR DOOR	1000	2000	-	DOUBLE LEAF FWD PARTLY OPENABLE GLASS DOOR
T30	REAR DOOR	1000	2000	-	DOUBLE LEAF FWD PARTLY OPENABLE GLASS DOOR
T31	REAR DOOR	1000	2000	-	DOUBLE LEAF FWD PARTLY OPENABLE GLASS DOOR
T32	REAR DOOR	1000	2000	-	DOUBLE LEAF FWD PARTLY OPENABLE GLASS DOOR
T33	REAR DOOR	1000	2000	-	DOUBLE LEAF FWD PARTLY OPENABLE GLASS DOOR
T34	REAR DOOR	1000	2000	-	DOUBLE LEAF FWD PARTLY OPENABLE GLASS DOOR
T35	REAR DOOR	1000	2000	-	DOUBLE LEAF FWD PARTLY OPENABLE GLASS DOOR
T36	REAR DOOR	1000	2000	-	DOUBLE LEAF FWD PARTLY OPENABLE GLASS DOOR
T37	REAR DOOR	1000	2000	-	DOUBLE LEAF FWD PARTLY OPENABLE GLASS DOOR
T38	REAR DOOR	1000	2000	-	DOUBLE LEAF FWD PARTLY OPENABLE GLASS DOOR
T39	REAR DOOR	1000	2000	-	DOUBLE LEAF FWD PARTLY OPENABLE GLASS DOOR
T40	REAR DOOR	1000	2000	-	DOUBLE LEAF FWD PARTLY OPENABLE GLASS DOOR
T41	REAR DOOR	1000	2000	-	DOUBLE LEAF FWD PARTLY OPENABLE GLASS DOOR
T42	REAR DOOR	1000	2000	-	DOUBLE LEAF FWD PARTLY OPENABLE GLASS DOOR
T43	REAR DOOR	1000	2000	-	DOUBLE LEAF FWD PARTLY OPENABLE GLASS DOOR
T44	REAR DOOR	1000	2000	-	DOUBLE LEAF FWD PARTLY OPENABLE GLASS DOOR
T45	REAR DOOR	1000	2000	-	DOUBLE LEAF FWD PARTLY OPENABLE GLASS DOOR
T46	REAR DOOR	1000	2000	-	DOUBLE LEAF FWD PARTLY OPENABLE GLASS DOOR
T47	REAR DOOR	1000	2000	-	DOUBLE LEAF FWD PARTLY OPENABLE GLASS DOOR
T48	REAR DOOR	1000	2000	-	DOUBLE LEAF FWD PARTLY OPENABLE GLASS DOOR
T49	REAR DOOR	1000	2000	-	DOUBLE LEAF FWD PARTLY OPENABLE GLASS DOOR
T50	REAR DOOR	1000	2000	-	DOUBLE LEAF FWD PARTLY OPENABLE GLASS DOOR
T51	REAR DOOR	1000	2000	-	DOUBLE LEAF FWD PARTLY OPENABLE GLASS DOOR
T52	REAR DOOR	1000	2000	-	DOUBLE LEAF FWD PARTLY OPENABLE GLASS DOOR
T53	REAR DOOR	1000	2000	-	DOUBLE LEAF FWD PARTLY OPENABLE GLASS DOOR
T54	REAR DOOR	1000	2000	-	DOUBLE LEAF FWD PARTLY OPENABLE GLASS DOOR
T55	REAR DOOR	1000	2000	-	DOUBLE LEAF FWD PARTLY OPENABLE GLASS DOOR
T56	REAR DOOR	1000	2000	-	DOUBLE LEAF FWD PARTLY OPENABLE GLASS DOOR
T57	REAR DOOR	1000	2000	-	DOUBLE LEAF FWD PARTLY OPENABLE GLASS DOOR
T58	REAR DOOR	1000	2000	-	DOUBLE LEAF FWD PARTLY OPENABLE GLASS DOOR
T59	REAR DOOR	1000	2000	-	DOUBLE LEAF FWD PARTLY OPENABLE GLASS DOOR
T60	REAR DOOR	1000	2000	-	DOUBLE LEAF FWD PARTLY OPENABLE GLASS DOOR
T61	REAR DOOR	1000	2000	-	DOUBLE LEAF FWD PARTLY OPENABLE GLASS DOOR
T62	REAR DOOR	1000	2000	-	DOUBLE LEAF FWD PARTLY OPENABLE GLASS DOOR
T63	REAR DOOR	1000	2000	-	DOUBLE LEAF FWD PARTLY OPENABLE GLASS DOOR
T64	REAR DOOR	1000	2000	-	DOUBLE LEAF FWD PARTLY OPENABLE GLASS DOOR
T65	REAR DOOR	1000	2000	-	DOUBLE LEAF FWD PARTLY OPENABLE GLASS DOOR
T66	REAR DOOR	1000	2000	-	DOUBLE LEAF FWD PARTLY OPENABLE GLASS DOOR
T67	REAR DOOR	1000	2000	-	DOUBLE LEAF FWD PARTLY OPENABLE GLASS DOOR
T68	REAR DOOR	1000	2000	-	DOUBLE LEAF FWD PARTLY OPENABLE GLASS DOOR
T69	REAR DOOR	1000	2000	-	DOUBLE LEAF FWD PARTLY OPENABLE GLASS DOOR
T70	REAR DOOR	1000	2000	-	DOUBLE LEAF FWD PARTLY OPENABLE GLASS DOOR
T71	REAR DOOR	1000	2000	-	DOUBLE LEAF FWD PARTLY OPENABLE GLASS DOOR
T72	REAR DOOR	1000	2000	-	DOUBLE LEAF FWD PARTLY OPENABLE GLASS DOOR
T73	REAR DOOR	1000	2000	-	DOUBLE LEAF FWD PARTLY OPENABLE GLASS DOOR
T74	REAR DOOR	1000	2000	-	DOUBLE LEAF FWD PARTLY OPENABLE GLASS DOOR
T75	REAR DOOR	1000	2000	-	DOUBLE LEAF FWD PARTLY OPENABLE GLASS DOOR
T76	REAR DOOR	1000	2000	-	DOUBLE LEAF FWD PARTLY OPENABLE GLASS DOOR
T77	REAR DOOR	1000	2000	-	DOUBLE LEAF FWD PARTLY OPENABLE GLASS DOOR
T78	REAR DOOR	1000	2000	-	DOUBLE LEAF FWD PARTLY OPENABLE GLASS DOOR
T79	REAR DOOR	1000	2000	-	DOUBLE LEAF FWD PARTLY OPENABLE GLASS DOOR
T80	REAR DOOR	1000	2000	-	DOUBLE LEAF FWD PARTLY OPENABLE GLASS DOOR
T81	REAR DOOR	1000	2000	-	DOUBLE LEAF FWD PARTLY OPENABLE GLASS DOOR
T82	REAR DOOR	1000	2000	-	DOUBLE LEAF FWD PARTLY OPENABLE GLASS DOOR
T83	REAR DOOR	1000	2000	-	DOUBLE LEAF FWD PARTLY OPENABLE GLASS DOOR
T84	REAR DOOR	1000	2000	-	DOUBLE LEAF FWD PARTLY OPENABLE GLASS DOOR
T85	REAR DOOR	1000	2000	-	DOUBLE LEAF FWD PARTLY OPENABLE GLASS DOOR
T86	REAR DOOR	1000	2000	-	DOUBLE LEAF FWD PARTLY OPENABLE GLASS DOOR
T87	REAR DOOR	1000	2000	-	DOUBLE LEAF FWD PARTLY OPENABLE GLASS DOOR
T88	REAR DOOR	1000	2000	-	DOUBLE LEAF FWD PARTLY OPENABLE GLASS DOOR
T89	REAR DOOR	1000	2000	-	DOUBLE LEAF FWD PARTLY OPENABLE GLASS DOOR
T90	REAR DOOR	1000	2000	-	DOUBLE LEAF FWD PARTLY OPENABLE GLASS DOOR
T91	REAR DOOR	1000	2000	-	DOUBLE LEAF FWD PARTLY OPENABLE GLASS DOOR
T92	REAR DOOR	1000	2000	-	DOUBLE LEAF FWD PARTLY OPENABLE GLASS DOOR
T93	REAR DOOR	1000	2000	-	DOUBLE LEAF FWD PARTLY OPENABLE GLASS DOOR
T94	REAR DOOR	1000	2000	-	DOUBLE LEAF FWD PARTLY OPENABLE GLASS DOOR
T95	REAR DOOR	1000	2000	-	DOUBLE LEAF FWD PARTLY OPENABLE GLASS DOOR
T96	REAR DOOR	1000	2000	-	DOUBLE LEAF FWD PARTLY OPENABLE GLASS DOOR
T97	REAR DOOR	1000	2000	-	DOUBLE LEAF FWD PARTLY OPENABLE GLASS DOOR
T98	REAR DOOR	1000	2000	-	DOUBLE LEAF FWD PARTLY OPENABLE GLASS DOOR
T99	REAR DOOR	1000	2000	-	DOUBLE LEAF FWD PARTLY OPENABLE GLASS DOOR
T100	REAR DOOR	1000	2000	-	DOUBLE LEAF FWD PARTLY OPENABLE GLASS DOOR



P-LINE AREA LINE DIAGRAM FOR SOCIETY OFFICE, STAFF TOILET AREA (SCALE - 1:100)

BUILT-UP AREA CALCULATION FOR SOCIETY OFFICE						
AREA OF THE BLOCK						
S1	1.27	X	3.79	X	1	= 4.81 SQMT.
S2	4.74	X	4.12	X	1	= 19.53 SQMT.
S3	4.00	X	1.54	X	1	= 6.16 SQMT.
<b>TOTAL SOCIETY OFFICE AREA</b>						<b>= 30.50 SQMT.</b>

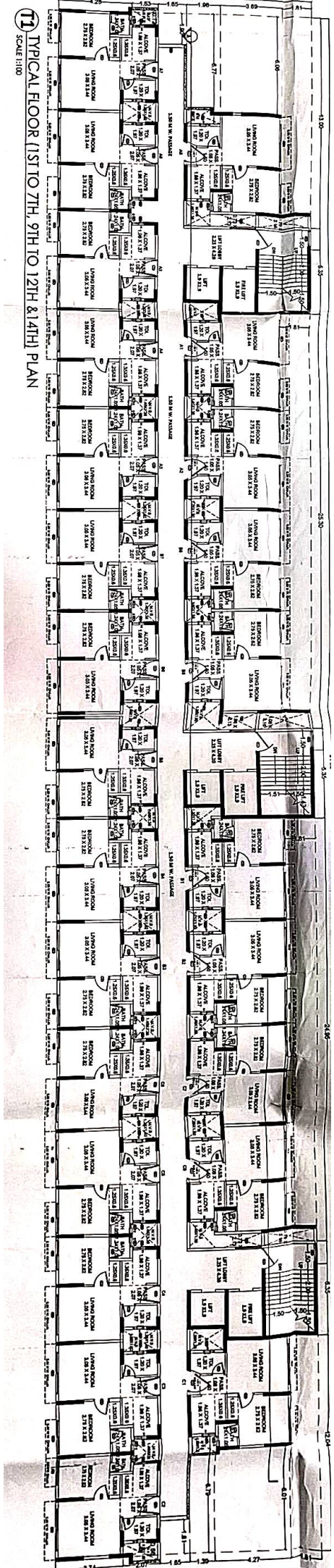
BUILT-UP AREA CALCULATION FOR SERVANT'S TOILET						
AREA OF THE BLOCK						
ST1	1.81	X	3.74	X	1	= 6.77 SQMT.
<b>TOTAL DRIVER'S ROOM AREA</b>						<b>= 6.77 SQMT.</b>

NOTE :  
 ALL DIMENSIONS/LEVELS/DEPTHS STATED ARE CLEAR DIMENSIONS (I.E. UNFINISHED DIMENSIONS) IN METERS.  
 CARPET AREA IS FOR PARKING CALCULATION ONLY

DESCRIPTION OF PROPOSAL & PROPERTY  
 PROPOSED BUILDING AT INTEGRATED TOWNSHIP PROJECT SITUATED AT VILLAGE - ANTERLI, KHONI, HEDUTANE, KOLE, KATALI, MANGOAN, GHARIVALI, TAL. KALYAN & DIST. THANE. AND AT VILLAGE UMBROLI TAL. AMBERNATH, DIST. THANE.

JOB NO.	REVISION NO.	DRAWN BY	CHECKED BY
PALAVA II	R0	-10443	
SHEET NO.	SHEET SIZE	DATE	SCALE
		13/03/2024	1:100

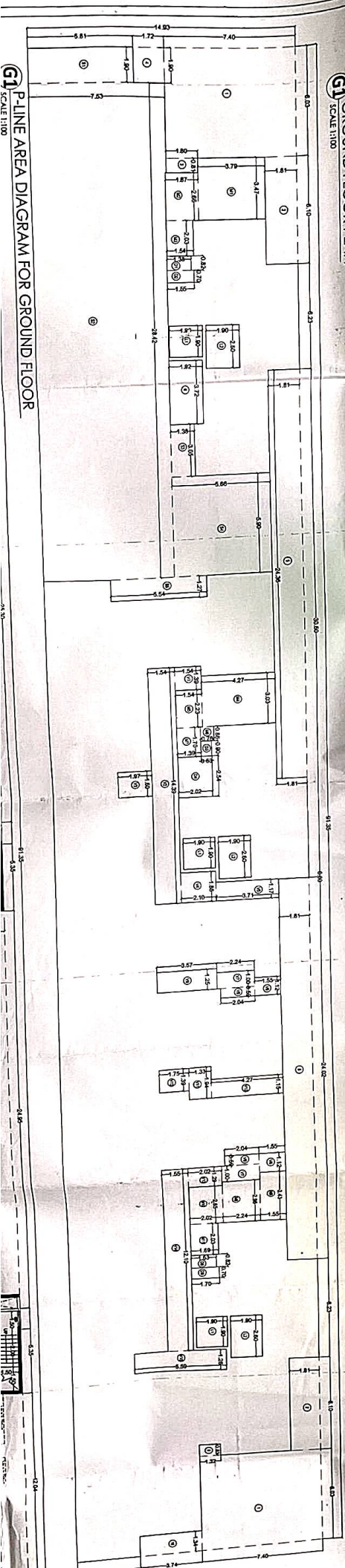
NAME & ADDRESS OF OWNER	SIGNATURE
M/S. MACROTECH DEVELOPERS LTD. 412, 4TH FLOOR, 17G VARDHAMAN CHAMBER CAWASJI PATEL ROAD, HORNIMAN CIRCLE, FORT, MUMBAI-400001	 (AUTHORISED SIGNATORY)
NAME & ADDRESS OF ARCHITECT	SIGNATURE
PRADEEP KAMBLE & ASSOCIATES B-101, 1st FL., JAKH BUTERA COMPLEX, PANDIT MALVIYA PATH, RAMNAGAR, DOMBIVALI ( W ) - 421 201, TEL - 2862642	 PRADEEP KAMBLE CA/87110471



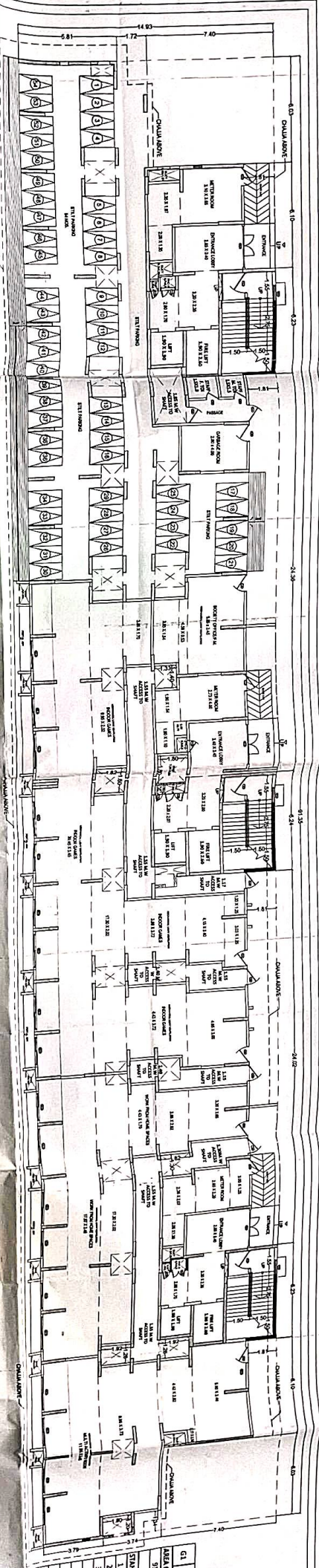
11 TYPICAL FLOOR (11TH TO 14TH, 9TH TO 12TH & 14TH) PLAN  
SCALE 1/100



**G1** PLANE AREA DIAGRAM FOR GROUND FLOOR  
SCALE 1:100



**G1** GROUND FLOOR PLAN  
SCALE 1:100



BUILD	AREA OF THE BLOCK	STANDARD OBJECT
G1	91.35	X 1.10
V1	1.60	X
V2	1.60	X
V3	1.60	X
V4	1.60	X
V5	1.60	X
V6	1.60	X
V7	1.00	X
V8	0.59	X
V9	1.25	X
V10	1.15	X
V11	1.94	X
V12	1.38	X
V13	1.25	X
V14	1.21	X
V15	1.12	X
V16	0.8	X
V17	0.7	X
V18	0.7	X
V19	0.7	X
V20	0.7	X
V21	0.7	X
V22	0.7	X
V23	0.7	X
V24	0.7	X
V25	0.7	X
V26	0.7	X
V27	0.7	X
V28	0.7	X
V29	0.7	X
V30	0.7	X
V31	0.7	X
V32	0.7	X
V33	0.7	X
V34	0.7	X
V35	0.7	X
V36	0.7	X
V37	0.7	X
V38	0.7	X
V39	0.7	X
V40	0.7	X
V41	0.7	X
V42	0.7	X
V43	0.7	X
V44	0.7	X
V45	0.7	X
V46	0.7	X
V47	0.7	X
V48	0.7	X
V49	0.7	X
V50	0.7	X
V51	0.7	X
V52	0.7	X
V53	0.7	X
V54	0.7	X
V55	0.7	X
V56	0.7	X
V57	0.7	X
V58	0.7	X
V59	0.7	X
V60	0.7	X
V61	0.7	X
V62	0.7	X
V63	0.7	X
V64	0.7	X
V65	0.7	X
V66	0.7	X
V67	0.7	X
V68	0.7	X
V69	0.7	X
V70	0.7	X
V71	0.7	X
V72	0.7	X
V73	0.7	X
V74	0.7	X
V75	0.7	X
V76	0.7	X
V77	0.7	X
V78	0.7	X
V79	0.7	X
V80	0.7	X
V81	0.7	X
V82	0.7	X
V83	0.7	X
V84	0.7	X
V85	0.7	X
V86	0.7	X
V87	0.7	X
V88	0.7	X
V89	0.7	X
V90	0.7	X
V91	0.7	X
V92	0.7	X
V93	0.7	X
V94	0.7	X
V95	0.7	X
V96	0.7	X
V97	0.7	X
V98	0.7	X
V99	0.7	X
V100	0.7	X
V101	0.7	X
V102	0.7	X
V103	0.7	X
V104	0.7	X
V105	0.7	X
V106	0.7	X
V107	0.7	X
V108	0.7	X
V109	0.7	X
V110	0.7	X
V111	0.7	X
V112	0.7	X
V113	0.7	X
V114	0.7	X
V115	0.7	X
V116	0.7	X
V117	0.7	X
V118	0.7	X
V119	0.7	X
V120	0.7	X
V121	0.7	X
V122	0.7	X
V123	0.7	X
V124	0.7	X
V125	0.7	X
V126	0.7	X
V127	0.7	X
V128	0.7	X
V129	0.7	X
V130	0.7	X
V131	0.7	X
V132	0.7	X
V133	0.7	X
V134	0.7	X
V135	0.7	X
V136	0.7	X
V137	0.7	X
V138	0.7	X
V139	0.7	X
V140	0.7	X
V141	0.7	X
V142	0.7	X
V143	0.7	X
V144	0.7	X
V145	0.7	X
V146	0.7	X
V147	0.7	X
V148	0.7	X
V149	0.7	X
V150	0.7	X
V151	0.7	X
V152	0.7	X
V153	0.7	X
V154	0.7	X
V155	0.7	X
V156	0.7	X
V157	0.7	X
V158	0.7	X
V159	0.7	X
V160	0.7	X
V161	0.7	X
V162	0.7	X
V163	0.7	X
V164	0.7	X
V165	0.7	X
V166	0.7	X
V167	0.7	X
V168	0.7	X
V169	0.7	X
V170	0.7	X
V171	0.7	X
V172	0.7	X
V173	0.7	X
V174	0.7	X
V175	0.7	X
V176	0.7	X
V177	0.7	X
V178	0.7	X
V179	0.7	X
V180	0.7	X
V181	0.7	X
V182	0.7	X
V183	0.7	X
V184	0.7	X
V185	0.7	X
V186	0.7	X
V187	0.7	X
V188	0.7	X
V189	0.7	X
V190	0.7	X
V191	0.7	X
V192	0.7	X
V193	0.7	X
V194	0.7	X
V195	0.7	X
V196	0.7	X
V197	0.7	X
V198	0.7	X
V199	0.7	X
V200	0.7	X
V201	0.7	X
V202	0.7	X
V203	0.7	X
V204	0.7	X
V205	0.7	X
V206	0.7	X
V207	0.7	X
V208	0.7	X
V209	0.7	X
V210	0.7	X
V211	0.7	X
V212	0.7	X
V213	0.7	X
V214	0.7	X
V215	0.7	X
V216	0.7	X
V217	0.7	X
V218	0.7	X
V219	0.7	X
V220	0.7	X
V221	0.7	X
V222	0.7	X
V223	0.7	X
V224	0.7	X
V225	0.7	X
V226	0.7	X
V227	0.7	X
V228	0.7	X
V229	0.7	X
V230	0.7	X
V231	0.7	X
V232	0.7	X
V233	0.7	X
V234	0.7	X
V235	0.7	X
V236	0.7	X
V237	0.7	X
V238	0.7	X
V239	0.7	X
V240	0.7	X
V241	0.7	X
V242	0.7	X
V243	0.7	X
V244	0.7	X
V245	0.7	X
V246	0.7	X
V247	0.7	X
V248	0.7	X
V249	0.7	X
V250	0.7	X
V251	0.7	X
V252	0.7	X
V253	0.7	X
V254	0.7	X
V255	0.7	X
V256	0.7	X
V257	0.7	X
V258	0.7	X
V259	0.7	X
V260	0.7	X
V261	0.7	X
V262	0.7	X
V263	0.7	X
V264	0.7	X
V265	0.7	X
V266	0.7	X
V267	0.7	X
V268	0.7	X
V269	0.7	X
V270	0.7	X
V271	0.7	X
V272	0.7	X
V273	0.7	X
V274	0.7	X
V275	0.7	X
V276	0.7	X
V277	0.7	X
V278	0.7	X
V279	0.7	X
V280	0.7	X
V281	0.7	X
V282	0.7	X
V283	0.7	X
V284	0.7	X
V285	0.7	X
V286	0.7	X
V287	0.7	X
V288	0.7	X
V289	0.7	X
V290	0.7	X
V291	0.7	X
V292	0.7	X
V293	0.7	X
V294	0.7	X
V295	0.7	X
V296	0.7	X
V297	0.7	X
V298	0.7	X
V299	0.7	X
V300	0.7	X