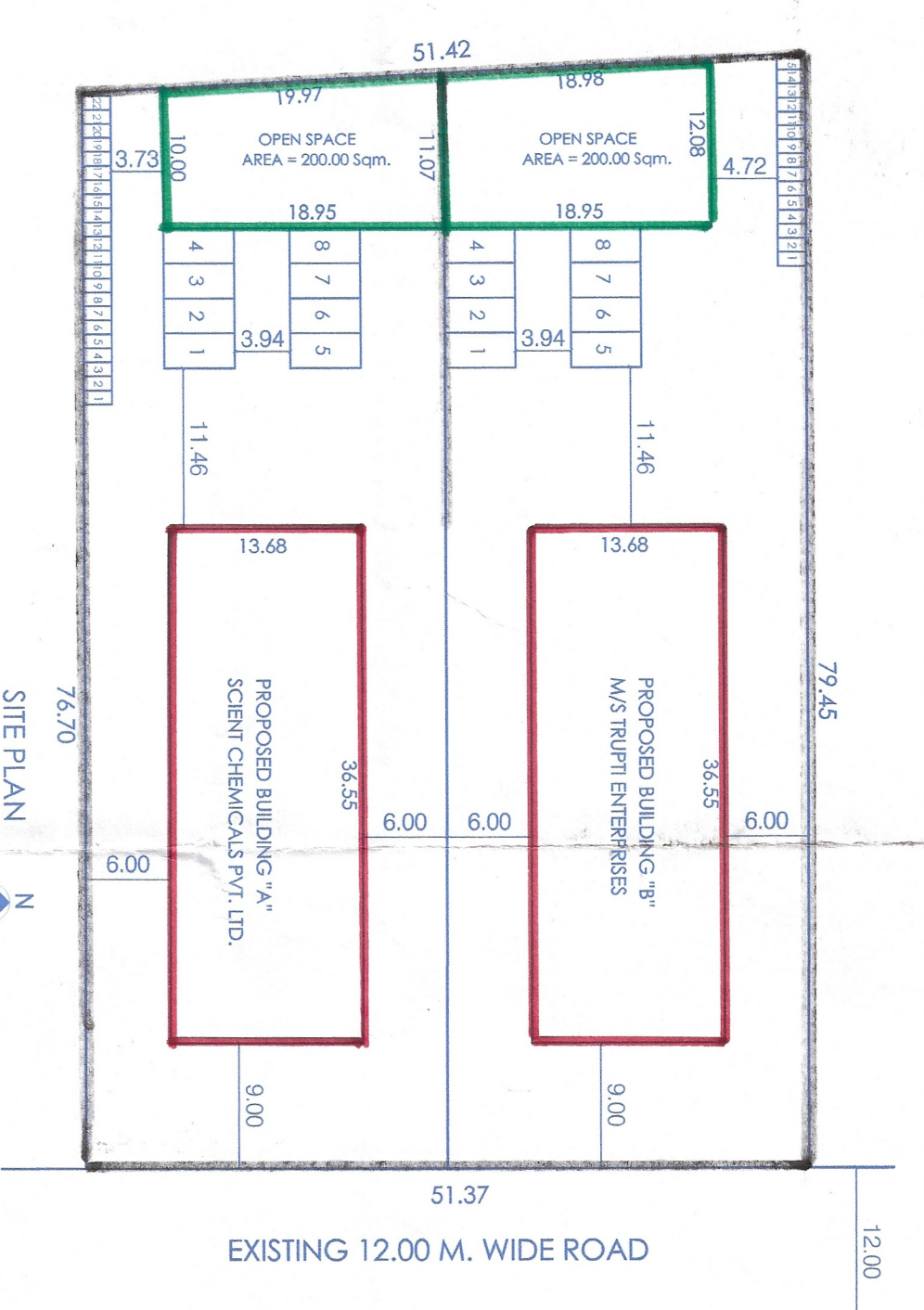


PLOT AREA STATEMENT

S.No.	Area (sq. m)	Remarks
1	27100.00	Plot Area
2	15100.00	Area reserved for roads and drainage
3	12000.00	Area reserved for open spaces
4	2000.00	Area reserved for other purposes
Total	56100.00	

REQUIREMENT OF W.C. TOILET & BATHS (TABLE NO. 13.1) (IN SQ.M)

WORKS	NO. OF WORKS	W.C. TOILET	BATHS
1	1	1	1
2	1	1	1
3	1	1	1
4	1	1	1
Total	4	4	4



BUILDING 'A' PARKING STATEMENT (TABLE NO. 8B)

AREA/NO.	REQUIRED PARKING	PROPOSED PARKING
1	10 Nos.	10 Nos.
2	10 Nos.	10 Nos.
3	10 Nos.	10 Nos.
4	10 Nos.	10 Nos.
Total	40 Nos.	40 Nos.

AREA CALCULATION

Building	Allowable FSI	Utilized FSI
Bldg. 'A'	4000.000 (0.90 x 4500.00)	800.00
Bldg. 'B'	4000.000 (0.90 x 4500.00)	54.44
Bldg. 'C'	4000.000 (0.90 x 4500.00)	88.54
Total	12000.000	157.98

TOTAL PROPOSED BLP AREA STATEMENT

Building	Owner/Name	Area (sq. m)
Bldg. 'A'	M/S. SRI SANKAR PVT. LTD.	800.00
Bldg. 'B'	M/S. SRI SANKAR PVT. LTD.	54.44
Bldg. 'C'	M/S. SRI SANKAR PVT. LTD.	88.54
Total	M/S. SRI SANKAR PVT. LTD.	157.98

AREA DIAGRAM & CALCULATION

Block	Area of Block (sq. m)	Area of Block (sq. m)	Net BLP Area (sq. m)
Block - A	800.00	800.00	800.00
Block - B	54.44	54.44	54.44
Block - C	88.54	88.54	88.54
Total	943.00	943.00	943.00

TOTAL BLP AREA STATEMENT BUILDING 'A'

Block	Area (sq. m)	Net BLP Area (sq. m)
Block - A	800.00	800.00
Block - B	54.44	54.44
Block - C	88.54	88.54
Total	943.00	943.00

AREA DIAGRAM & CALCULATION

Block	Area of Block (sq. m)	Area of Block (sq. m)	Net BLP Area (sq. m)
Block - C	88.54	88.54	88.54
Block - D	54.44	54.44	54.44
Total	143.00	143.00	143.00

TOTAL BLP AREA STATEMENT BUILDING 'B'

Block	Area (sq. m)	Net BLP Area (sq. m)
Block - C	88.54	88.54
Block - D	54.44	54.44
Total	143.00	143.00

AREA DIAGRAM & CALCULATION

Block	Area of Block (sq. m)	Area of Block (sq. m)	Net BLP Area (sq. m)
Block - D	54.44	54.44	54.44
Block - E	88.54	88.54	88.54
Total	143.00	143.00	143.00

TOTAL BLP AREA STATEMENT BUILDING 'C'

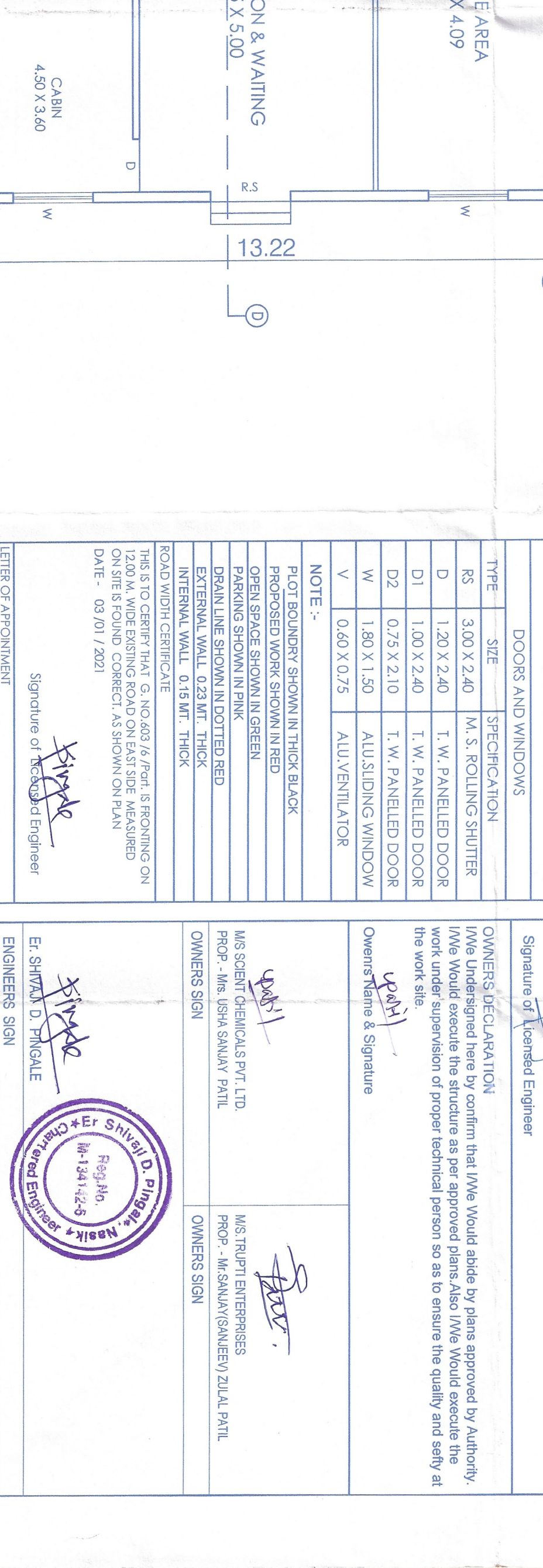
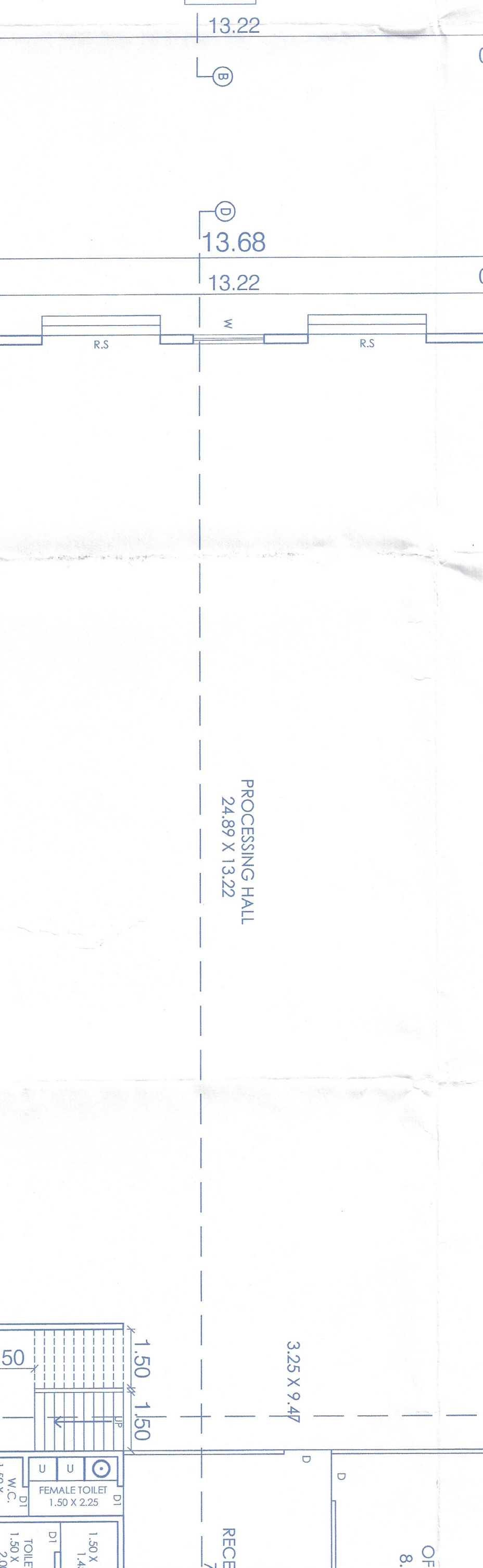
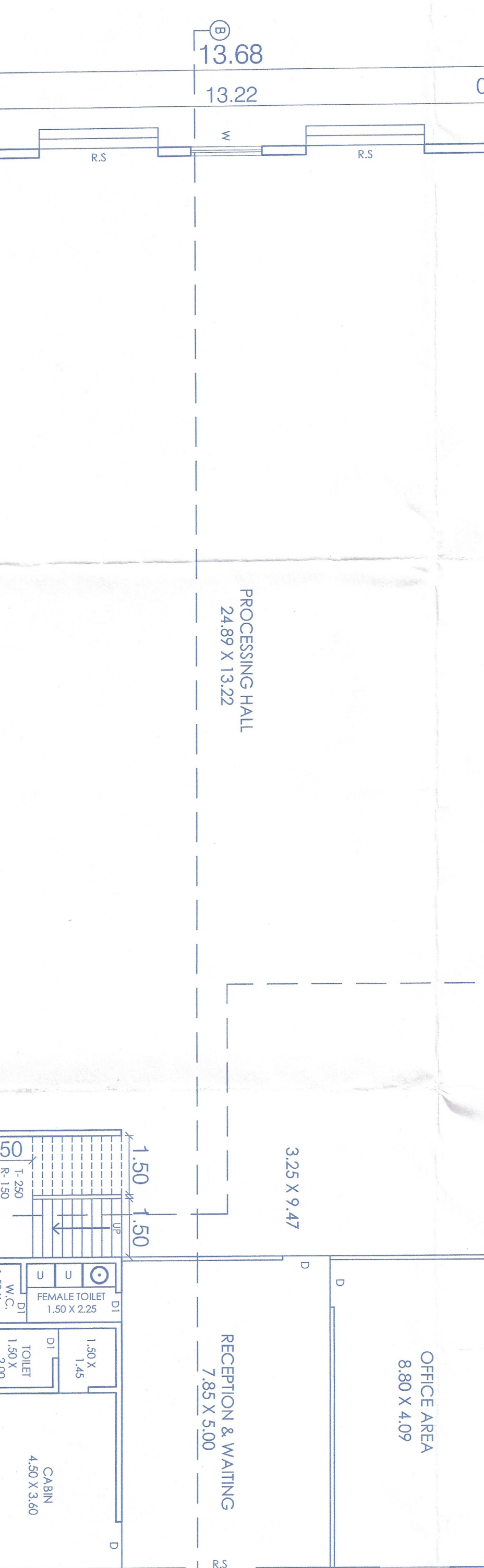
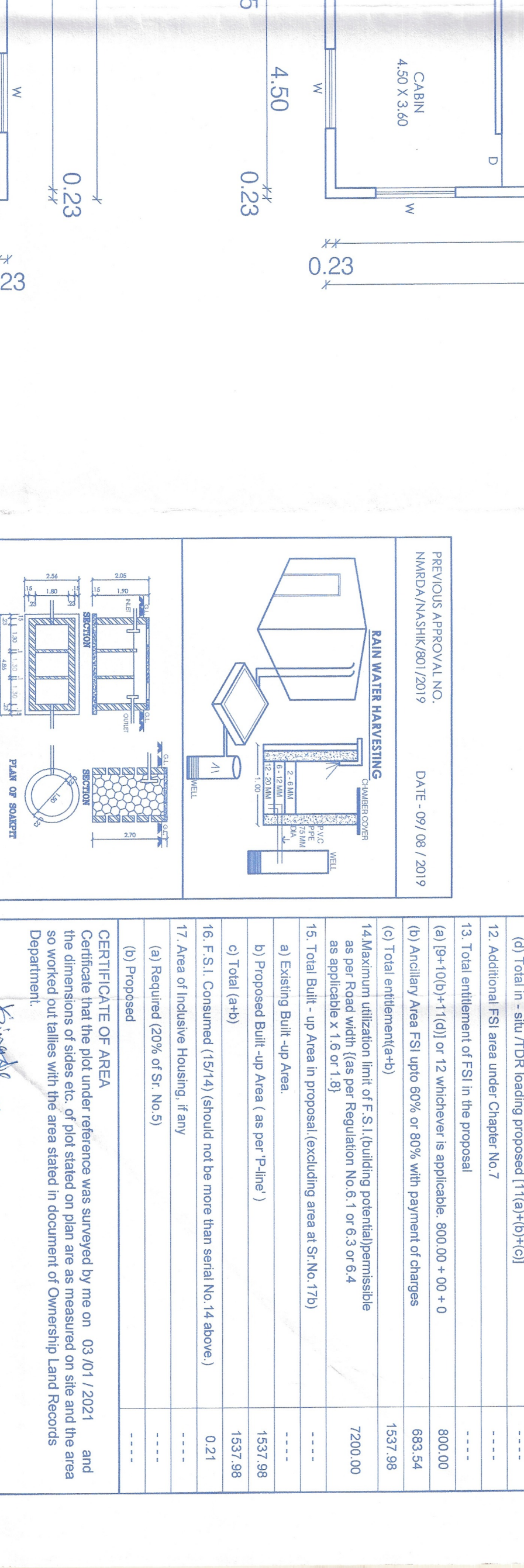
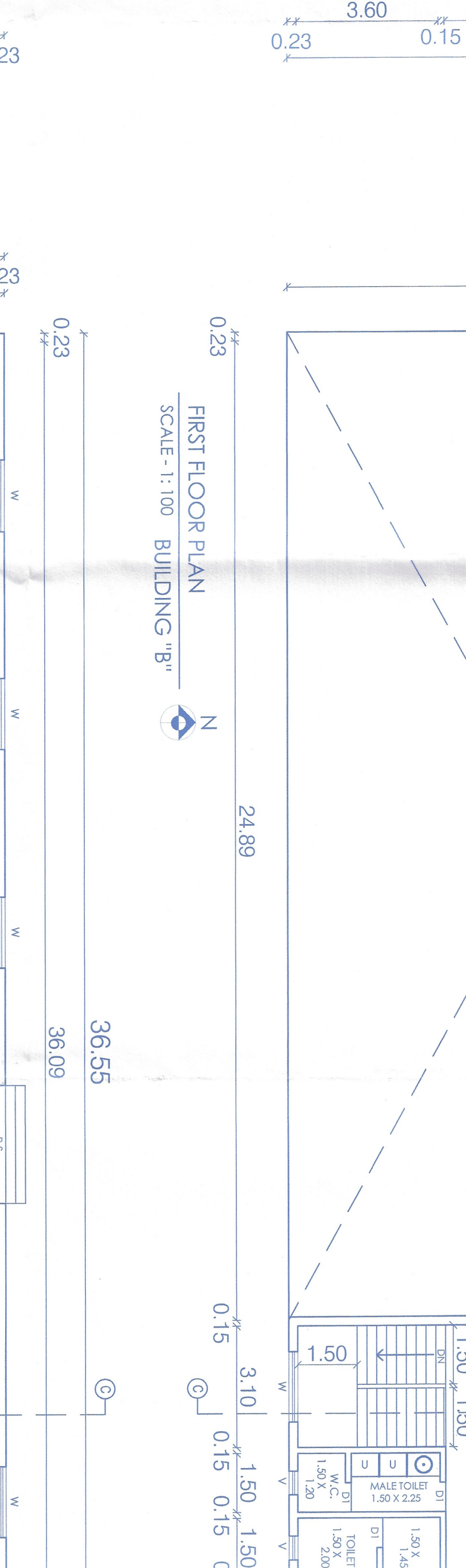
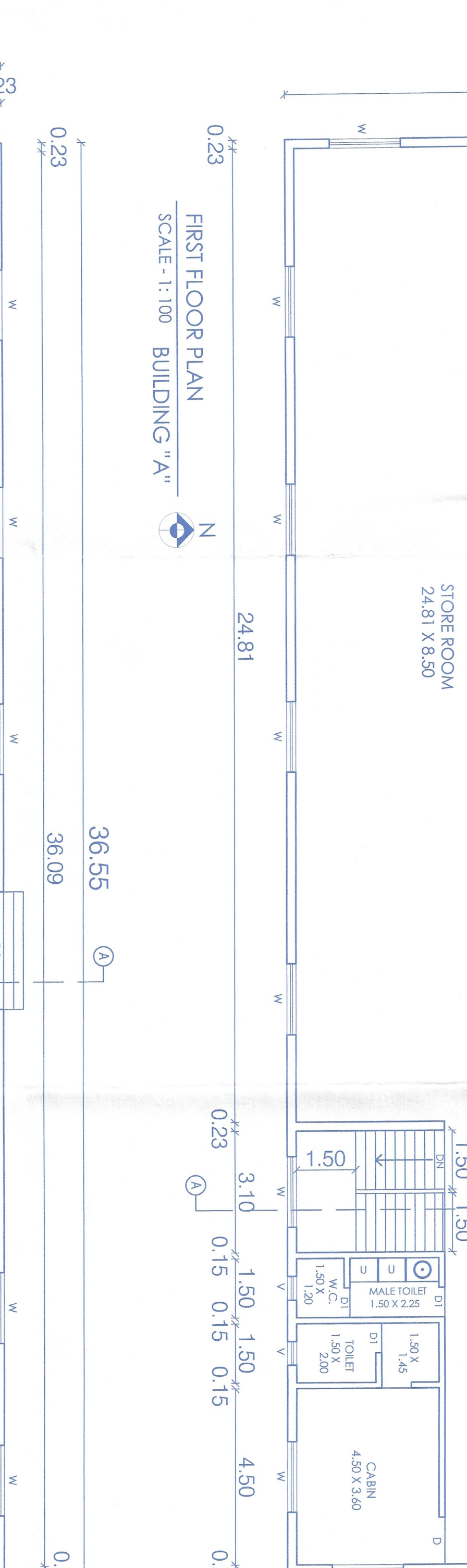
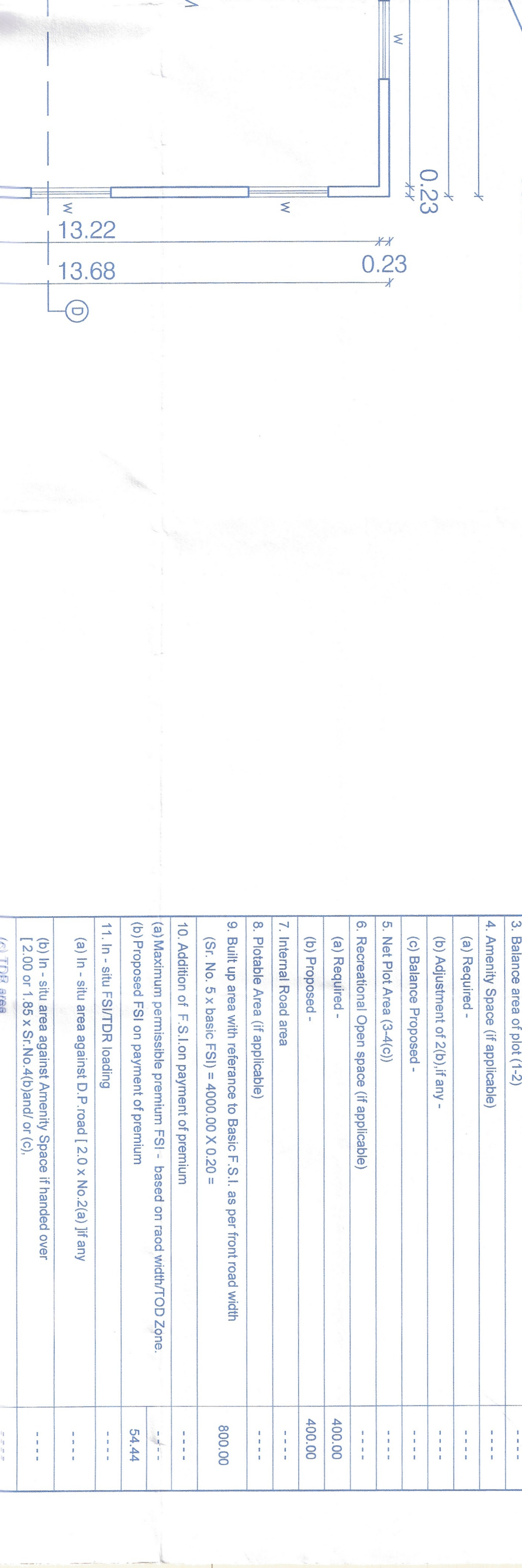
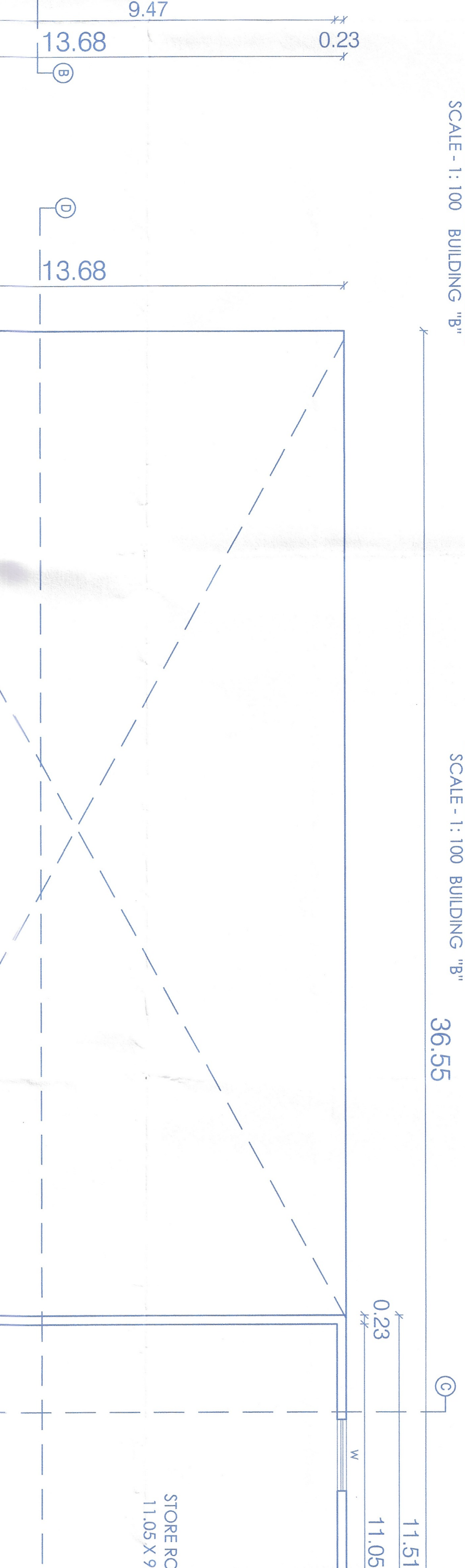
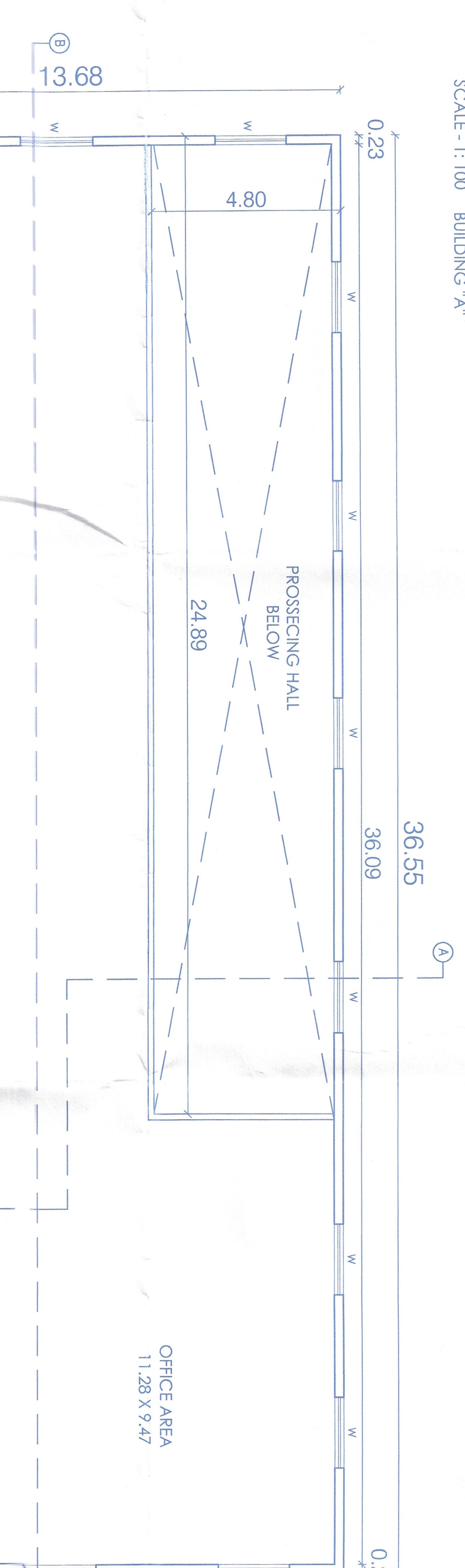
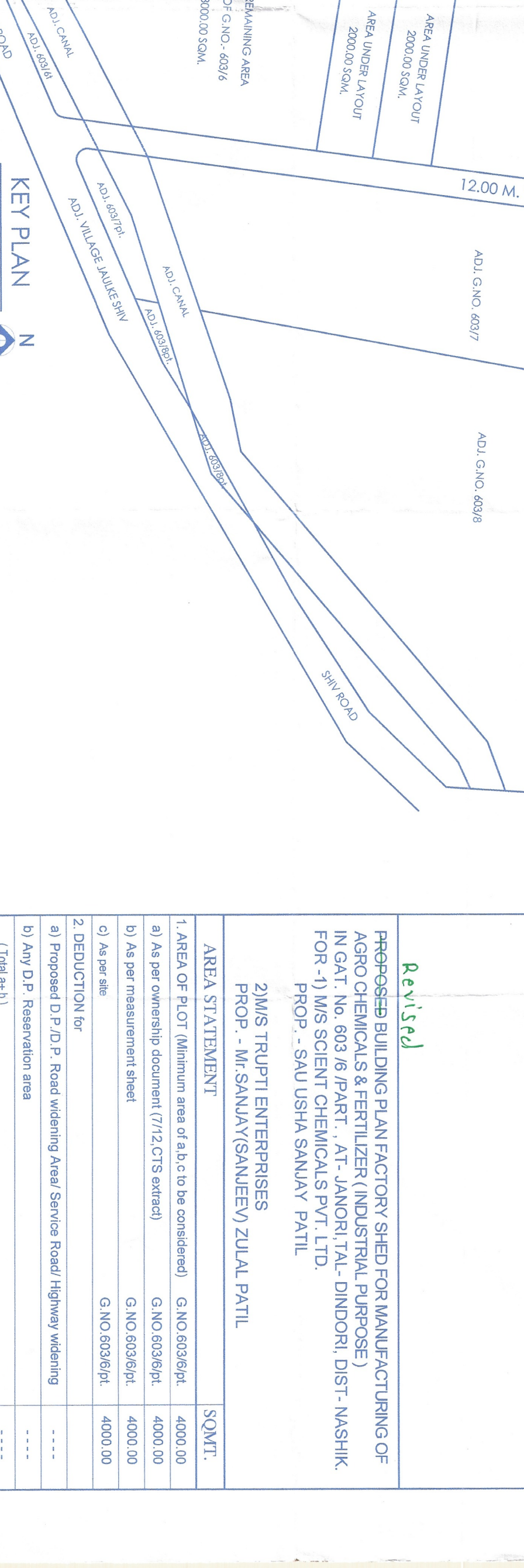
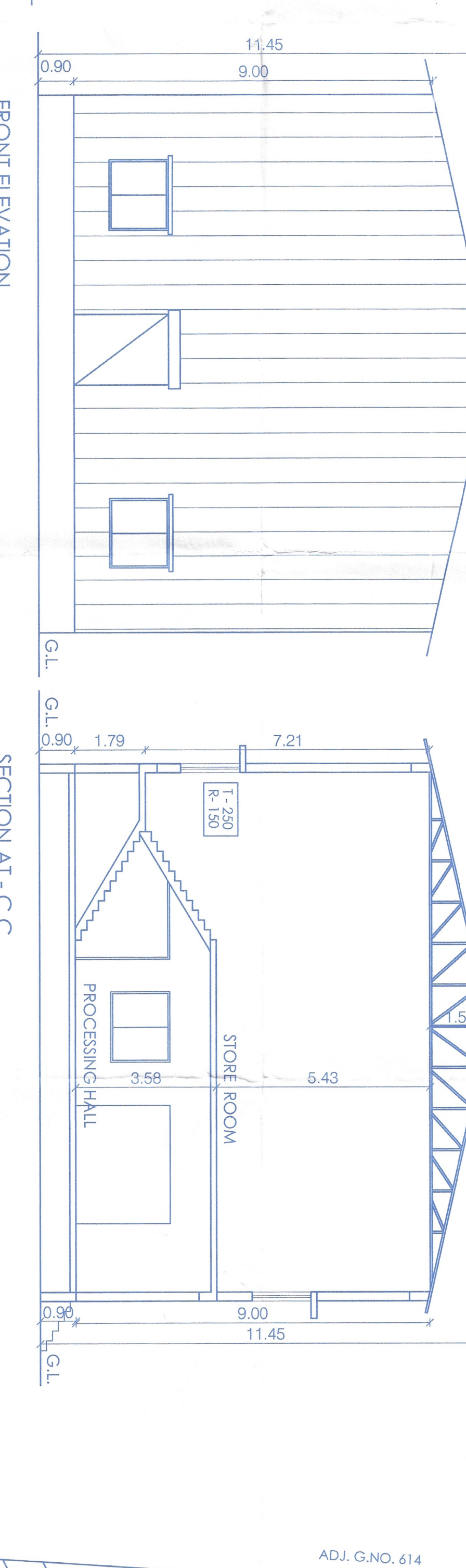
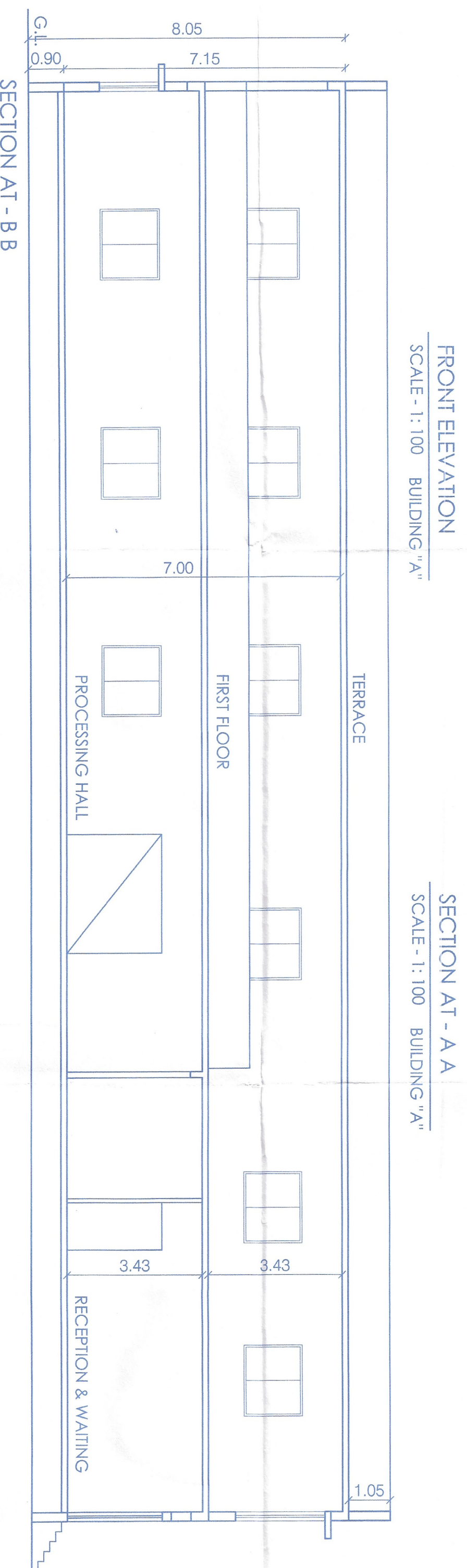
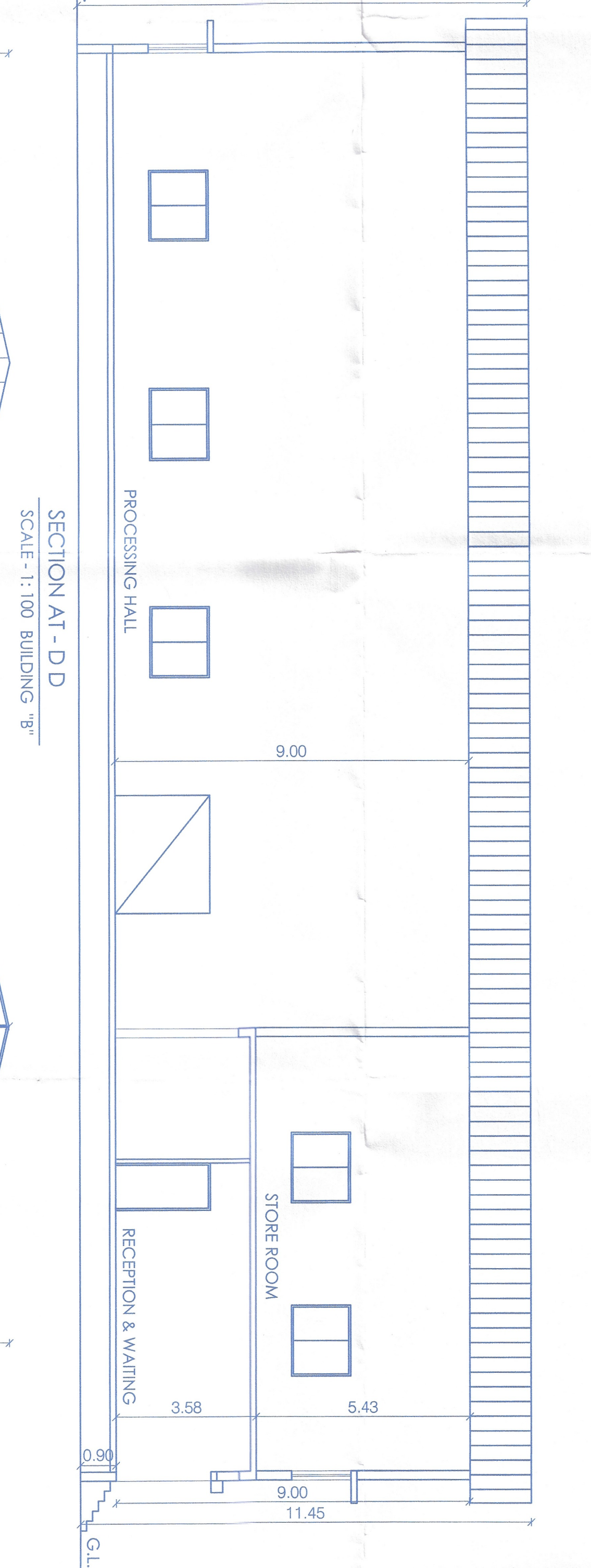
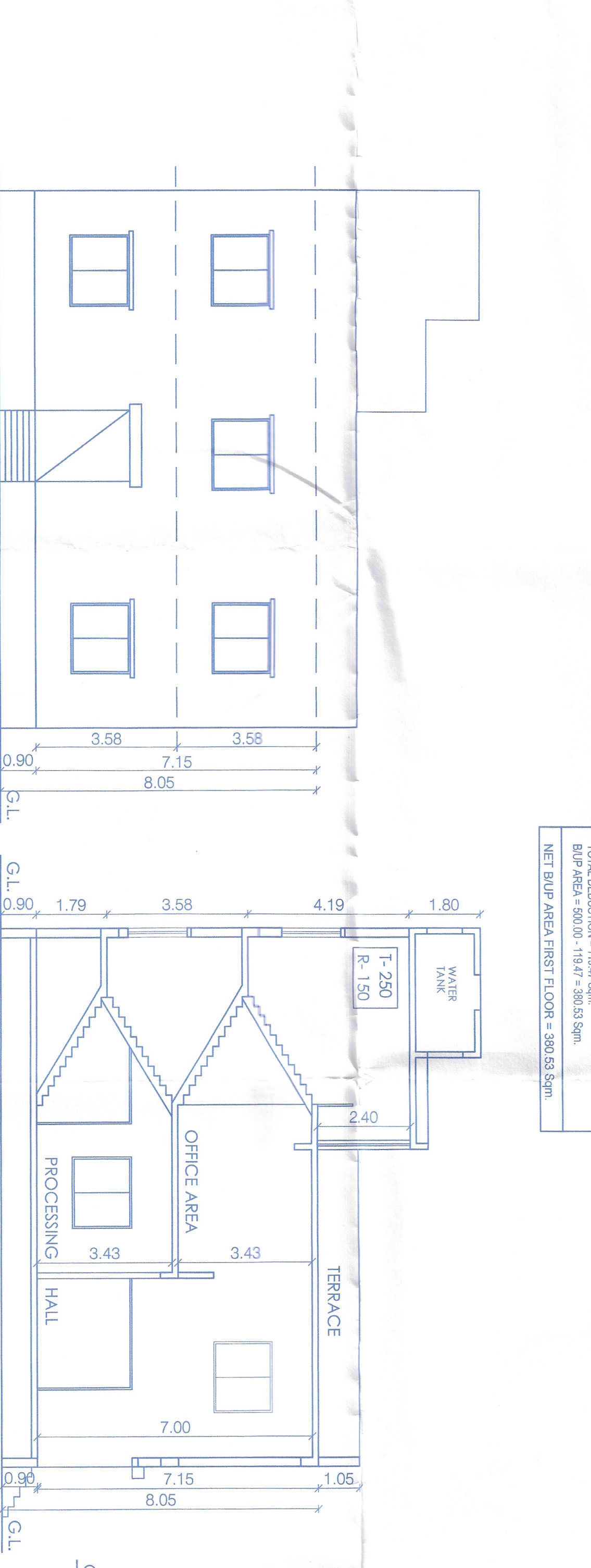
Block	Area (sq. m)	Net BLP Area (sq. m)
Block - D	54.44	54.44
Block - E	88.54	88.54
Total	143.00	143.00

AREA DIAGRAM & CALCULATION

Block	Area of Block (sq. m)	Area of Block (sq. m)	Net BLP Area (sq. m)
Block - E	88.54	88.54	88.54
Block - F	54.44	54.44	54.44
Total	143.00	143.00	143.00

TOTAL BLP AREA STATEMENT BUILDING 'D'

Block	Area (sq. m)	Net BLP Area (sq. m)
Block - E	88.54	88.54
Block - F	54.44	54.44
Total	143.00	143.00



REVISIONS

No.	Description	Date
1	As per approved plan	08/08/2019
2	As per approved plan	08/08/2019
3	As per approved plan	08/08/2019

AREA STATEMENT

Block	Area (sq. m)	Net BLP Area (sq. m)
Block - A	800.00	800.00
Block - B	54.44	54.44
Block - C	88.54	88.54
Total	943.00	943.00

AREA STATEMENT

Block	Area (sq. m)	Net BLP Area (sq. m)
Block - C	88.54	88.54
Block - D	54.44	54.44
Total	143.00	143.00

AREA STATEMENT

Block	Area (sq. m)	Net BLP Area (sq. m)
Block - D	54.44	54.44
Block - E	88.54	88.54
Total	143.00	143.00

AREA STATEMENT

Block	Area (sq. m)	Net BLP Area (sq. m)
Block - E	88.54	88.54
Block - F	54.44	54.44
Total	143.00	143.00

AREA STATEMENT

Block	Area (sq. m)	Net BLP Area (sq. m)
Block - F	54.44	54.44
Block - G	88.54	88.54
Total	143.00	143.00

Stamp of Approval

APPROVED FOR CONSTRUCTION

DR. SRI SANKAR PVT. LTD.

REGISTERED ARCHITECT

NO. 123, MAIN ROAD, CHENNAI - 600 001

Stamp of Approval

APPROVED FOR CONSTRUCTION

M/S. SRI SANKAR PVT. LTD.

REGISTERED ARCHITECT

NO. 123, MAIN ROAD, CHENNAI - 600 001

Stamp of Approval

APPROVED FOR CONSTRUCTION

M/S. SRI SANKAR PVT. LTD.

REGISTERED ARCHITECT

NO. 123, MAIN ROAD, CHENNAI - 600 001

Stamp of Approval

APPROVED FOR CONSTRUCTION

M/S. SRI SANKAR PVT. LTD.

REGISTERED ARCHITECT

NO. 123, MAIN ROAD, CHENNAI - 600 001

Stamp of Approval

APPROVED FOR CONSTRUCTION

M/S. SRI SANKAR PVT. LTD.

REGISTERED ARCHITECT

NO. 123, MAIN ROAD, CHENNAI - 600 001

Stamp of Approval

APPROVED FOR CONSTRUCTION

M/S. SRI SANKAR PVT. LTD.

REGISTERED ARCHITECT

NO. 123, MAIN ROAD, CHENNAI - 600 001