

BUILT UP AREA CALCULATION

GROUND FLOOR (LOBBY)-RESIDENTIAL

A	3.955 X 2.960 X 1 NO	=	11.796 SQ.MT.
TOTAL ADDITION = 11.796 SQ.MT. X			

DEDUCTIONS

1	2.350 X 0.980 X 1 NO	=	0.180 SQ.MT.
2	0.250 X 0.980 X 1 NO	=	0.020 SQ.MT.
3	0.485 X 2.450 X 1 NO	=	1.115 SQ.MT.
4	0.700 X 0.980 X 1 NO	=	0.211 SQ.MT.
TOTAL DEDUCTION = 1.526 SQ.MT. Y1			
TOTAL BUILT UP AREA (X - Y1) = 10.260 SQ.MT. X1			

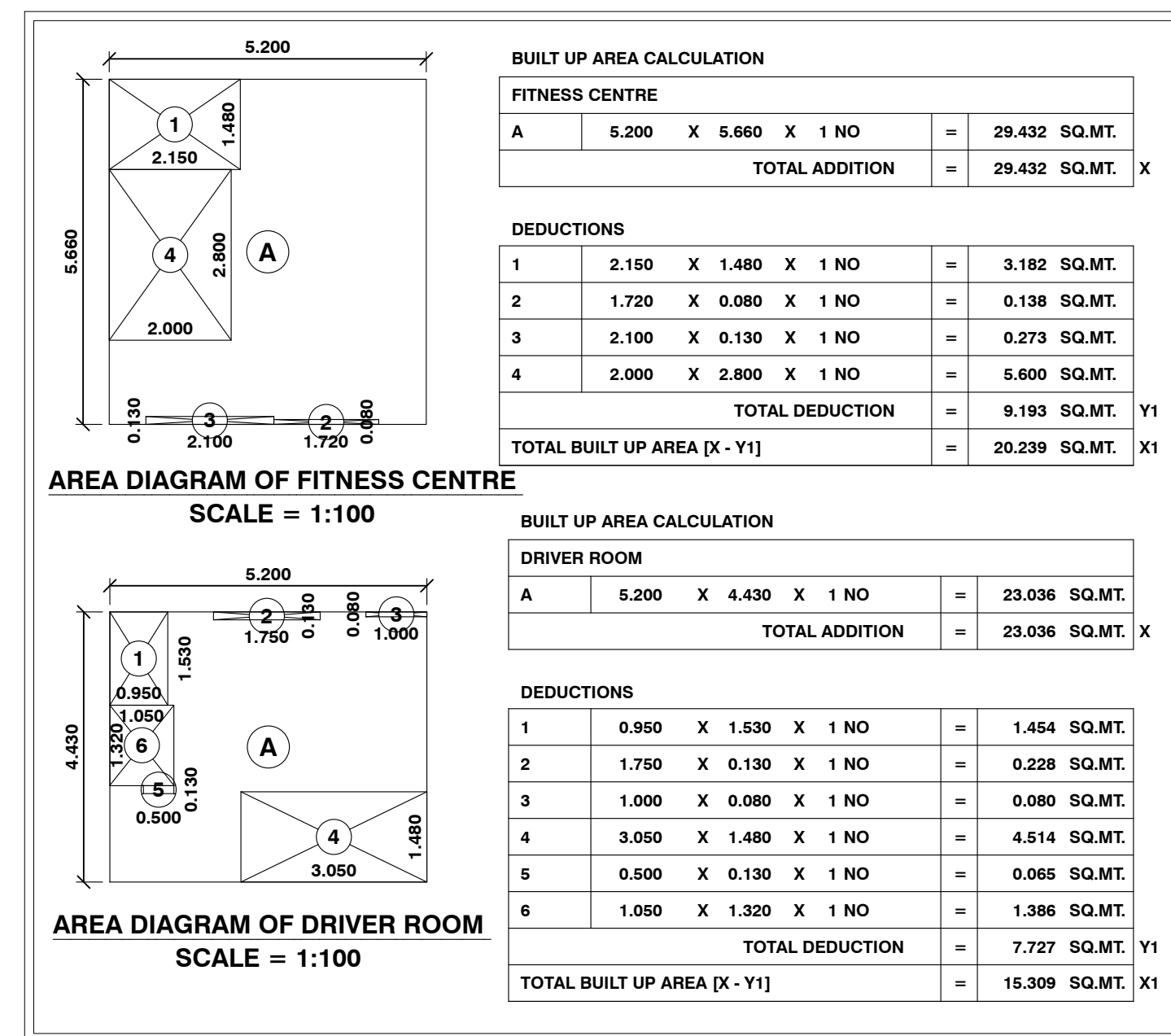
BUILT UP AREA CALCULATION

GROUND FLOOR (TOILET)-RESIDENTIAL

B	2.350 X 1.350 X 1 NO	=	3.173 SQ.MT.
TOTAL ADDITION = 3.173 SQ.MT. X			

TOTAL BUILT UP AREA CALCULATION GROUND FLOOR (RESIDENTIAL)

(A + B) = 13.433 SQ.MT. X



BUILT UP AREA CALCULATION

FITNESS CENTRE

A	5.200 X 6.660 X 1 NO	=	28.432 SQ.MT.
TOTAL ADDITION = 28.432 SQ.MT. X			

DEDUCTIONS

1	2.150 X 1.490 X 1 NO	=	3.182 SQ.MT.
2	1.720 X 0.980 X 1 NO	=	0.138 SQ.MT.
3	2.100 X 0.130 X 1 NO	=	0.273 SQ.MT.
4	2.000 X 2.860 X 1 NO	=	5.680 SQ.MT.
TOTAL DEDUCTION = 9.163 SQ.MT. Y1			
TOTAL BUILT UP AREA (X - Y1) = 19.269 SQ.MT. X1			

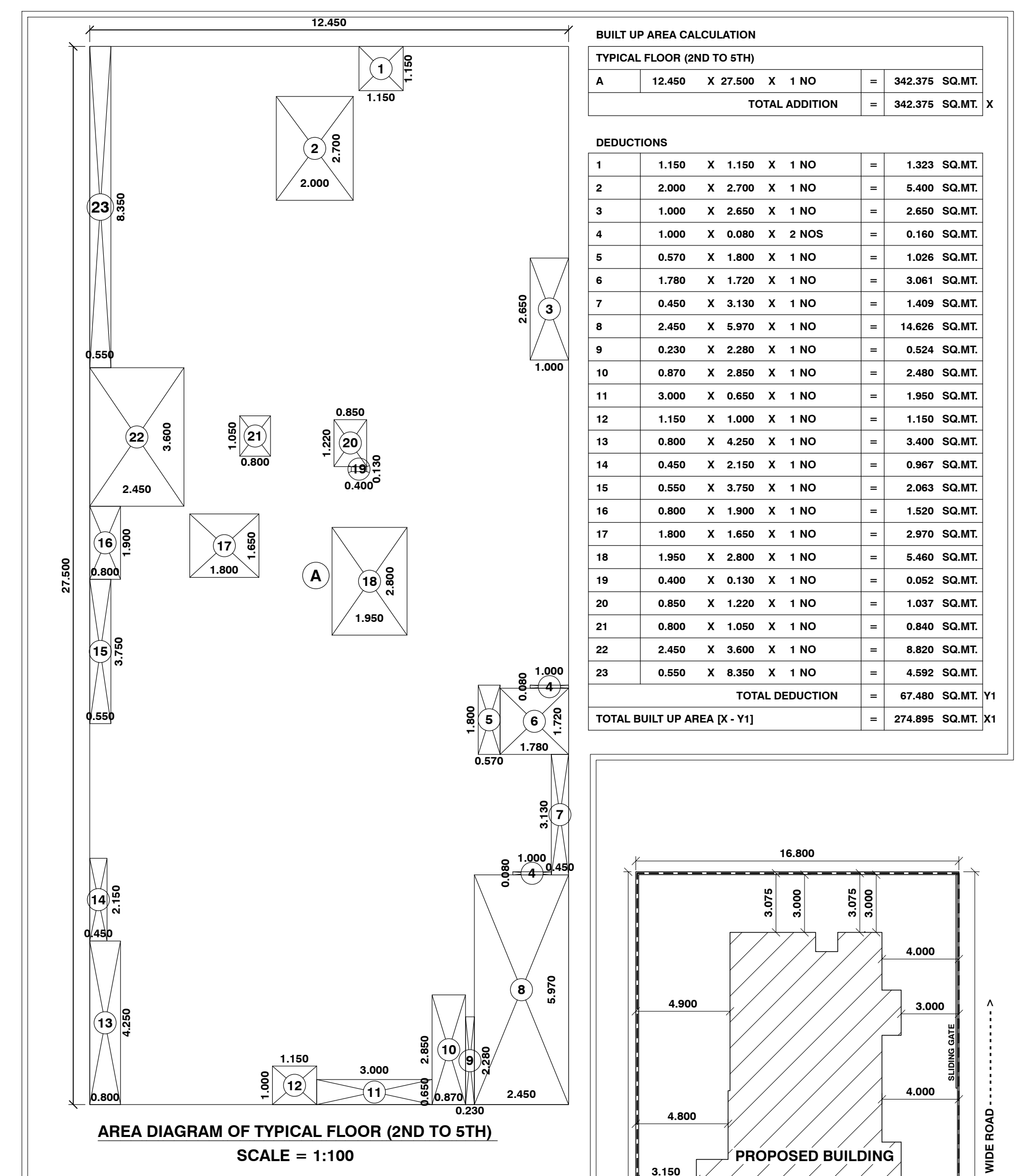
BUILT UP AREA CALCULATION

DRIVER ROOM

A	5.200 X 4.430 X 1 NO	=	23.036 SQ.MT.
TOTAL ADDITION = 23.036 SQ.MT. X			

DEDUCTIONS

1	0.980 X 1.130 X 1 NO	=	1.054 SQ.MT.
2	1.250 X 0.130 X 1 NO	=	0.208 SQ.MT.
3	1.000 X 0.980 X 1 NO	=	0.980 SQ.MT.
4	3.050 X 1.490 X 1 NO	=	4.514 SQ.MT.
5	0.850 X 0.130 X 1 NO	=	0.096 SQ.MT.
6	1.060 X 1.320 X 1 NO	=	1.386 SQ.MT.
TOTAL DEDUCTION = 7.727 SQ.MT. Y1			
TOTAL BUILT UP AREA (X - Y1) = 15.309 SQ.MT. X1			



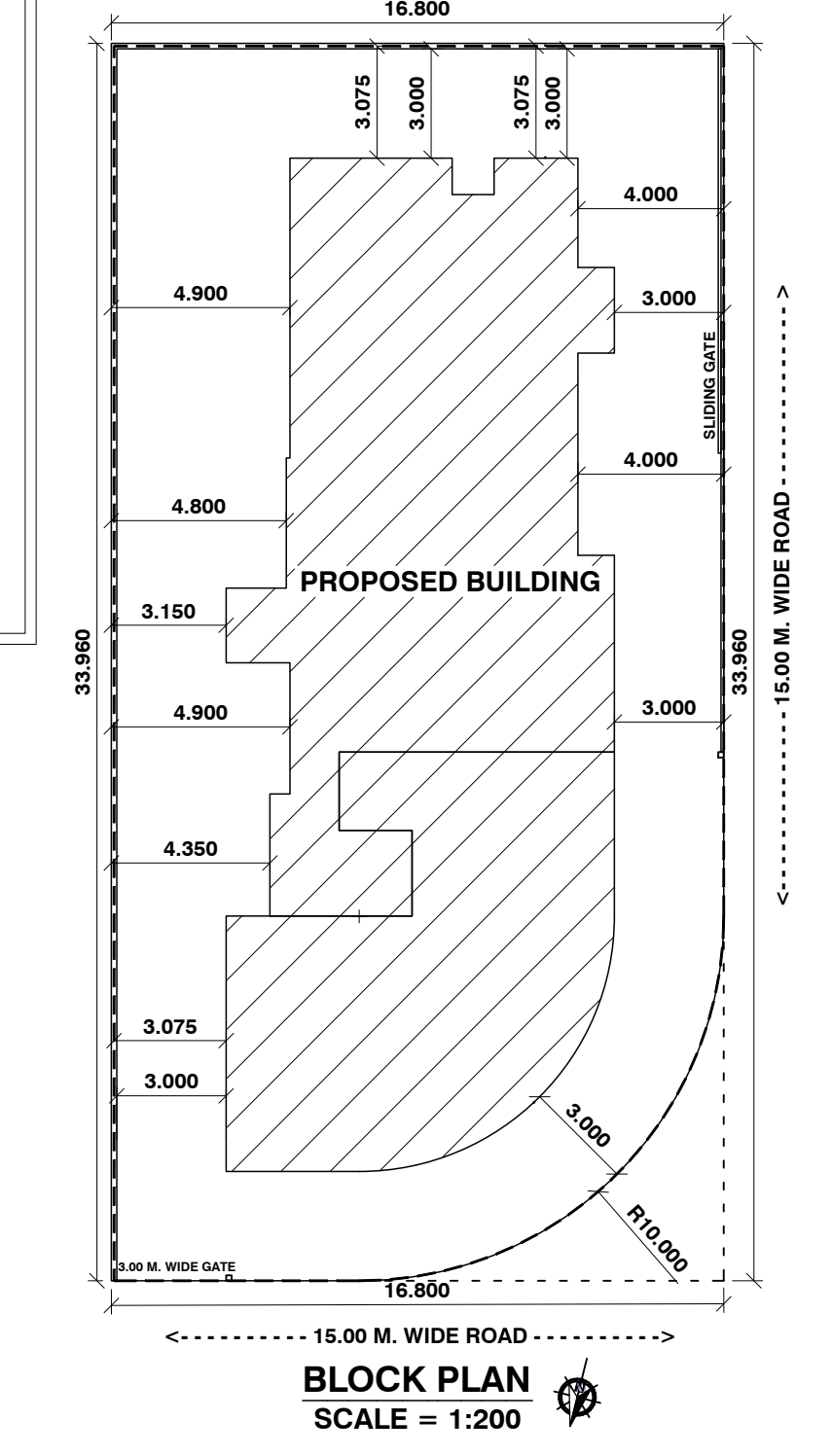
BUILT UP AREA CALCULATION

TYPICAL FLOOR (2ND TO 5TH)

A	12.450 X 27.000 X 1 NO	=	336.750 SQ.MT.
TOTAL ADDITION = 336.750 SQ.MT. X			

DEDUCTIONS

1	1.150 X 1.150 X 1 NO	=	1.323 SQ.MT.
2	2.000 X 2.700 X 1 NO	=	5.400 SQ.MT.
3	1.000 X 2.650 X 1 NO	=	2.650 SQ.MT.
4	1.000 X 0.980 X 2 NOS	=	0.160 SQ.MT.
5	0.670 X 1.900 X 1 NO	=	1.026 SQ.MT.
6	1.780 X 1.720 X 1 NO	=	3.061 SQ.MT.
7	0.450 X 3.130 X 1 NO	=	1.409 SQ.MT.
8	2.450 X 5.970 X 1 NO	=	14.626 SQ.MT.
9	0.250 X 2.280 X 1 NO	=	0.524 SQ.MT.
10	0.870 X 2.850 X 1 NO	=	2.480 SQ.MT.
11	3.500 X 0.950 X 1 NO	=	3.325 SQ.MT.
12	1.150 X 1.000 X 1 NO	=	1.150 SQ.MT.
13	0.800 X 4.250 X 1 NO	=	3.400 SQ.MT.
14	0.450 X 2.150 X 1 NO	=	0.967 SQ.MT.
15	0.550 X 3.750 X 1 NO	=	2.063 SQ.MT.
16	0.800 X 1.900 X 1 NO	=	1.520 SQ.MT.
17	1.800 X 1.650 X 1 NO	=	2.970 SQ.MT.
18	1.950 X 2.800 X 1 NO	=	5.460 SQ.MT.
19	0.400 X 0.130 X 1 NO	=	0.052 SQ.MT.
20	0.850 X 1.220 X 1 NO	=	1.037 SQ.MT.
21	0.800 X 1.050 X 1 NO	=	0.840 SQ.MT.
22	2.450 X 3.900 X 1 NO	=	9.620 SQ.MT.
23	0.550 X 8.350 X 1 NO	=	4.592 SQ.MT.
TOTAL DEDUCTION = 67.480 SQ.MT. Y1			
TOTAL BUILT UP AREA (X - Y1) = 274.950 SQ.MT. X1			



WATER STORAGE CAPACITY CALCULATION FOR O.H. TANK

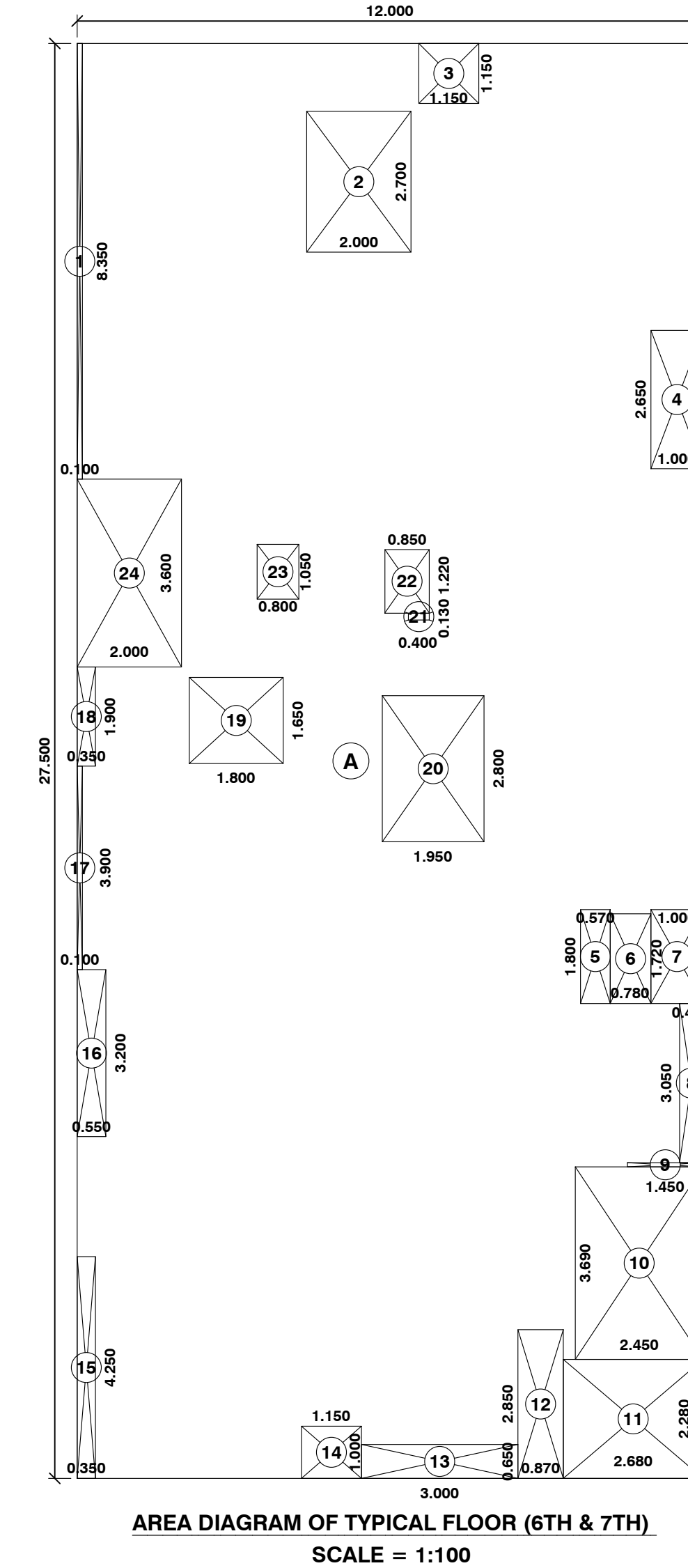
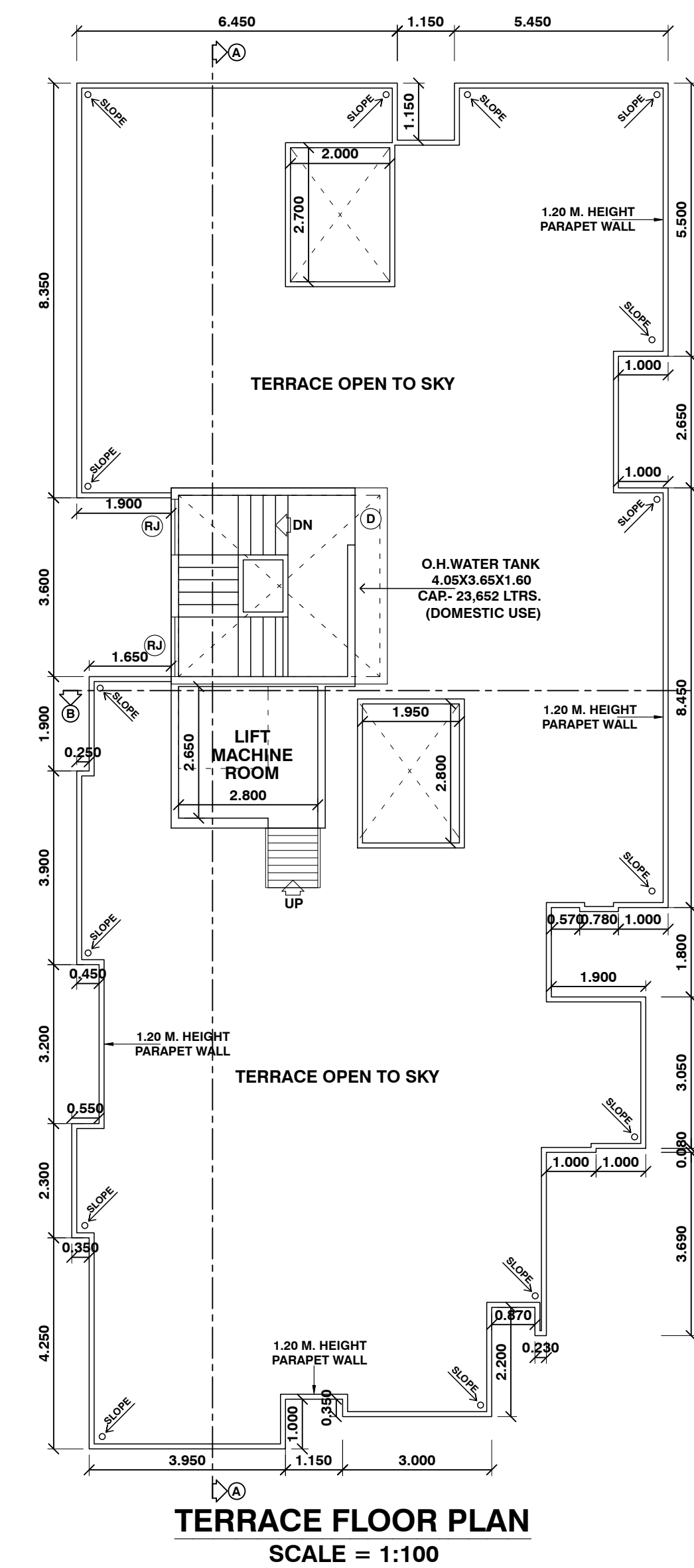
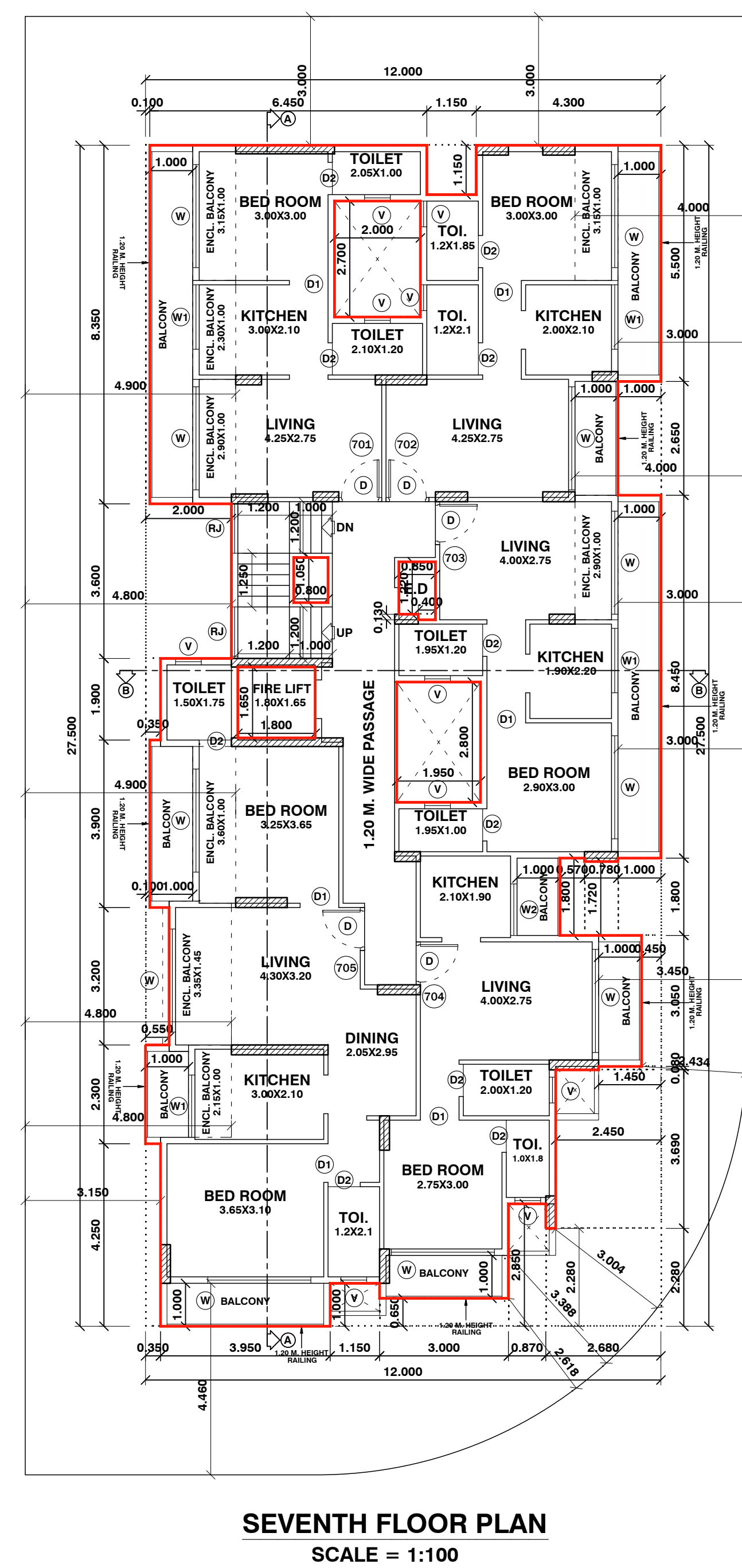
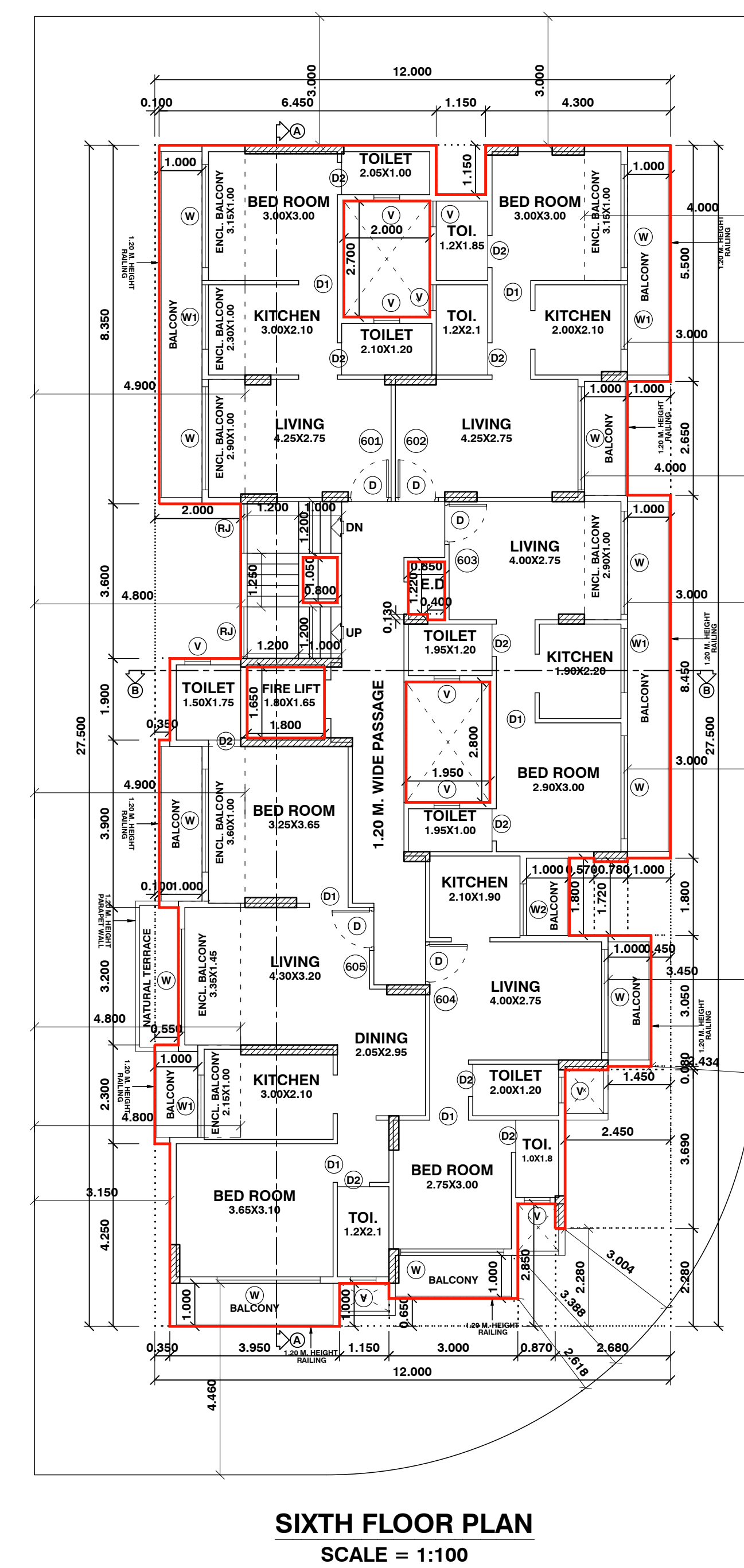
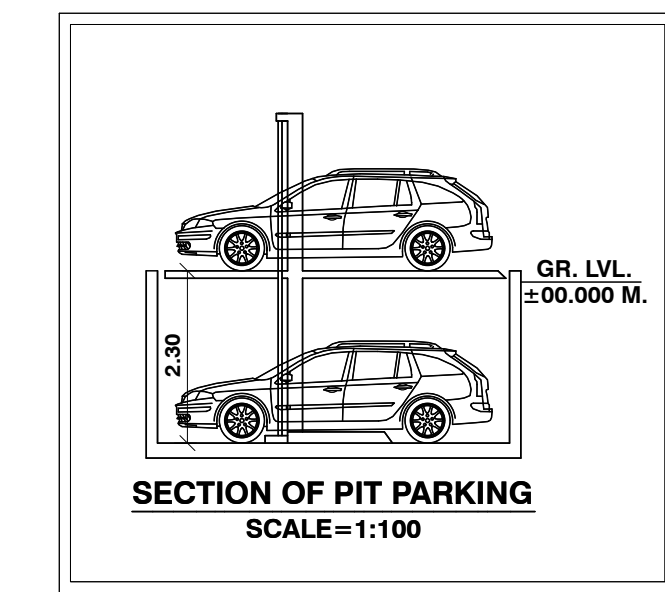
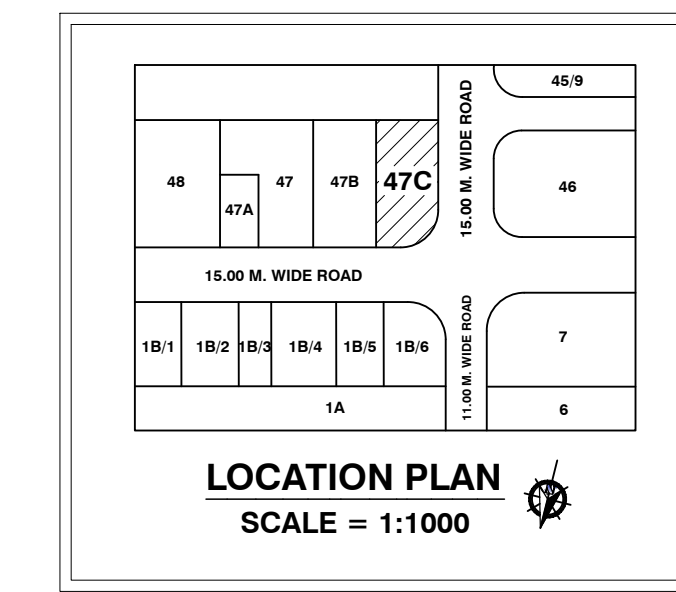
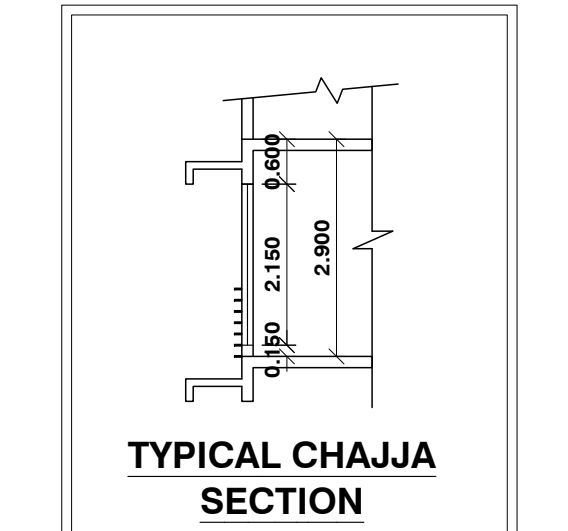
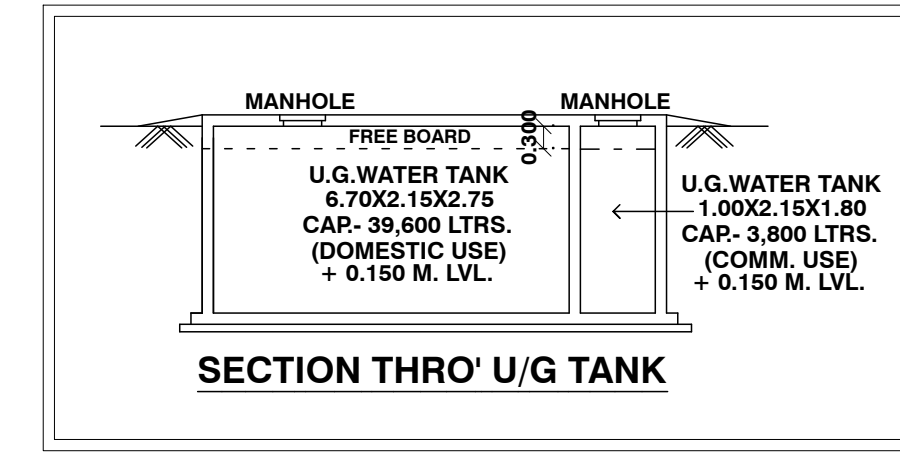
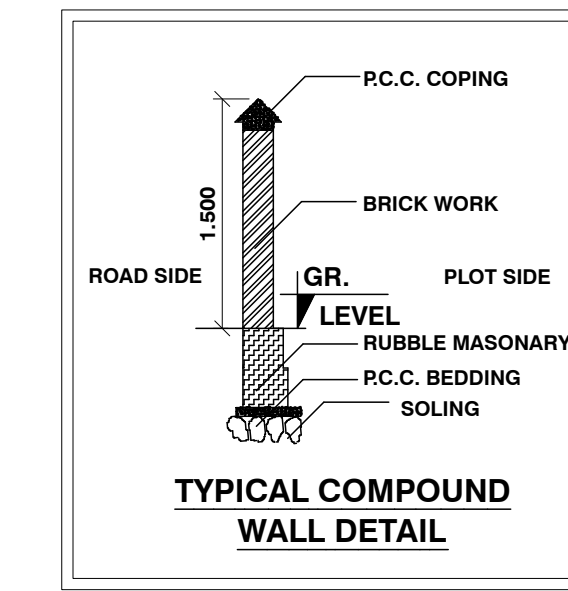
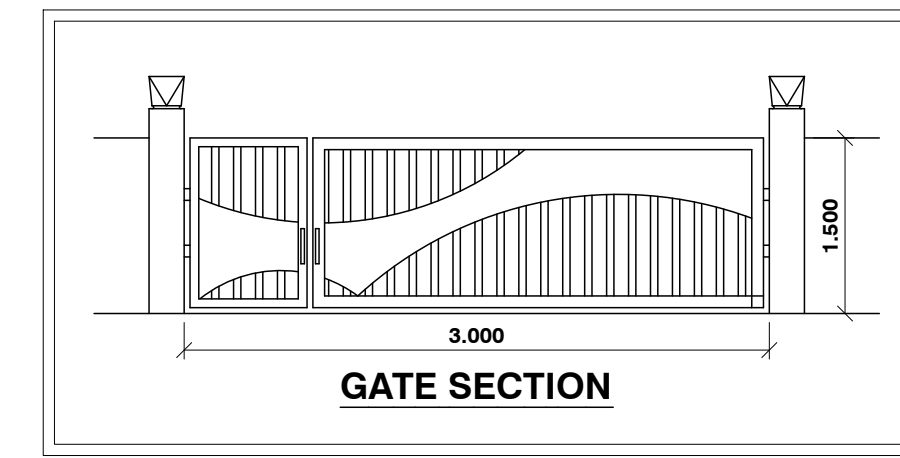
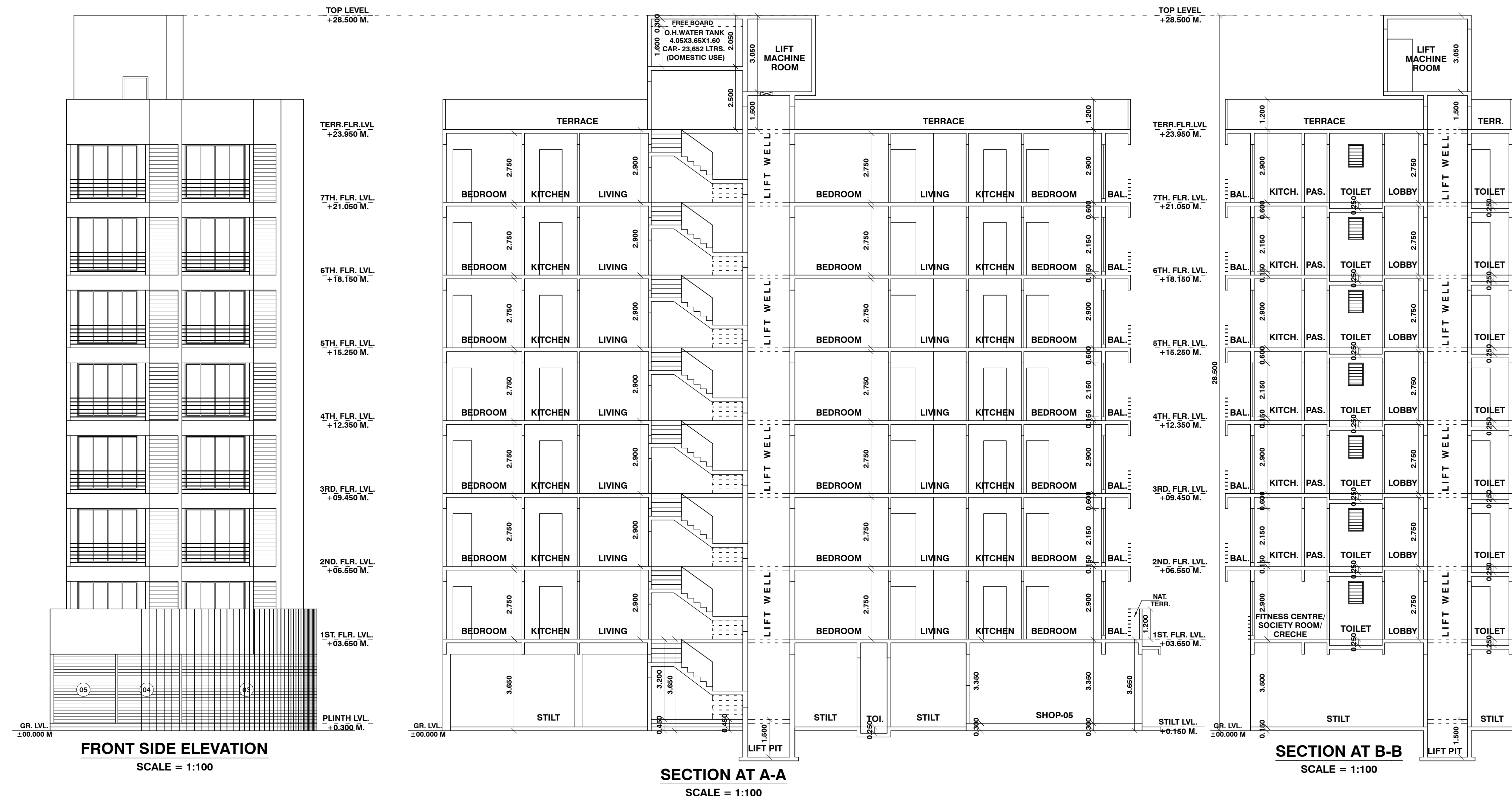
Water Required	O. H. Water Tank Provision		
Litr.	Tank Size (meter)	No. of Tank	Capacity (litr.)
1	2	3	4
23166	4.05X3.65X1.60	1	23,652
TOTAL			
			23,652

Note:
1) O. H. tank capacity should be minimum 60% of total water requirement of U.G. tank.
2) Size of water tank is excluding of free board.

WATER STORAGE CAPACITY CALCULATION FOR U.G. TANK

Total No. of Units Residential/Commercial	Addl. Toilet	Population (Per 5 Person)	Addl. Toilet	Population	Total	U.G. Tank Provided
	180 Litr.	(Per 5 Person)				Size (meter)
1	2	(1X5 Person) = 3	(2X180 ltr) = 4	(3X180 ltr) = 5	(4+5) = 6	7
2	3	(2X5 Person) = 6	(3X180 ltr) = 4	(4X180 ltr) = 5	(5+6) = 7	8
3	4	(3X5 Person) = 9	(4X180 ltr) = 4	(5X180 ltr) = 5	(6+9) = 15	10
4	5	(4X5 Person) = 12	(5X180 ltr) = 4	(6X180 ltr) = 5	(12+5) = 17	11
5	6	(5X5 Person) = 15	(6X180 ltr) = 4	(7X180 ltr) = 5	(15+5) = 20	12
6	7	(6X5 Person) = 18	(7X180 ltr) = 4	(8X180 ltr) = 5	(18+5) = 23	13
7	8	(7X5 Person) = 21	(8X180 ltr) = 4	(9X180 ltr) = 5	(21+5) = 26	14
8	9	(8X5 Person) = 24	(9X180 ltr) = 4	(10X180 ltr) = 5	(24+5) = 29	15
9	10	(9X5 Person) = 27	(10X180 ltr) = 4	(11X180 ltr) = 5	(27+5) = 32	16
10	11	(10X5 Person) = 30	(11X180 ltr) = 4	(12X180 ltr) = 5	(30+5) = 35	17
11	12	(11X5 Person) = 33	(12X180 ltr) = 4	(13X180 ltr) = 5	(33+5) = 38	18
12	13	(12X5 Person) = 36	(13X180 ltr) = 4	(14X180 ltr) = 5	(36+5) = 41	19
13	14	(13X5 Person) = 39	(14X180 ltr) = 4	(15X180 ltr) = 5	(39+5) = 44	20
14	15	(14X5 Person) = 42	(15X180 ltr) = 4	(16X180 ltr) = 5	(42+5) = 47	21
15	16	(15X5 Person) = 45	(16X180 ltr) = 4	(17X180 ltr) = 5	(45+5) = 50	22
16	17	(16X5 Person) = 48	(17X180 ltr) = 4	(18X180 ltr) = 5	(48+5) = 53	23
17	18	(17X5 Person) = 51	(18X180 ltr) = 4	(19X180 ltr) = 5	(51+5) = 56	24
18	19	(18X5 Person) = 54	(19X180 ltr) = 4	(20X180 ltr) = 5	(54+5) = 59	25
19	20	(19X5 Person) = 57	(20X180 ltr) = 4	(21X180 ltr) = 5	(57+5) = 62	26
20	21	(20X5 Person) = 60	(21X180 ltr) = 4	(22X180 ltr) = 5	(60+5) = 65	27
21	22	(21X5 Person) = 63	(22X180 ltr) = 4	(23X180 ltr) = 5	(63+5) = 68	28
22	23	(22X5 Person) = 66	(23X180 ltr) = 4	(24X180 ltr) = 5	(66+5) = 71	29
23	24	(23X5 Person) = 69	(24X180 ltr) = 4	(25X180 ltr) = 5	(69+5) = 74	30
24	25	(24X5 Person) = 72	(25X180 ltr) = 4	(26X180 ltr) = 5	(72+5) = 77	31
25	26	(25X5 Person) = 75	(26X180 ltr) = 4	(27X180 ltr) = 5	(75+5) = 80	32
26	27	(26X5 Person) = 78	(27X180 ltr) = 4	(28X180 ltr) = 5	(78+5) = 83	33
27	28	(27X5 Person) = 81	(28X180 ltr) = 4	(29X180 ltr) = 5	(81+5) = 86	34
28	29	(28X5 Person) = 84	(29X180 ltr) = 4	(30X180 ltr) = 5	(84+5) = 89	35
29	30	(29X5 Person) = 87	(30X180 ltr) = 4	(31X180 ltr) = 5	(87+5) = 92	36
30	31	(30X5 Person) = 90	(31X180 ltr) = 4	(32X180 ltr) = 5	(90+5) = 95	37
31	32	(31X5 Person) = 93	(32X180 ltr) = 4	(33X180 ltr) = 5	(93+5) = 98	38
32	33	(32X5 Person) = 96	(33X180 ltr) = 4	(34X180 ltr) = 5	(96+5) = 101	39
33	34	(33X5 Person) = 99	(34X180 ltr) = 4	(35X180 ltr) = 5	(99+5) = 104	40
34	35	(34X5 Person) = 102	(35X180 ltr) = 4	(36X180 ltr) = 5	(102+5) = 107	41
35	36	(35X5 Person) = 105	(36X180 ltr) = 4	(37X180 ltr) = 5	(105+5) = 110	42
36	37	(36X5 Person) = 108	(37X180 ltr) = 4	(38X180 ltr) = 5	(108+5) = 113	43
37	38	(37X5 Person) = 111	(38X180 ltr) = 4	(39X180 ltr) = 5	(111+5) = 116	44
38	39	(38X5 Person) = 114	(39X180 ltr) = 4	(40X180 ltr) = 5	(114+5) = 119	45
39	40	(39X5 Person) = 117	(40X180 ltr) = 4	(41X180 ltr) = 5	(117+5) = 122	46
40	41	(40X5 Person) = 120	(41X180 ltr) = 4	(42X180 ltr) = 5	(120+5) = 125	47
41	42	(41X5 Person) = 123	(42X180 ltr) = 4	(43X180 ltr) = 5	(123+5) = 128	48
42	43	(42X5 Person) = 126	(43X180 ltr) = 4	(44X180 ltr) = 5	(126+5) = 131	49
43	44	(43X5 Person) = 129	(44X180 ltr) = 4	(45X180 ltr) = 5	(129+5) = 134	50
44	45	(44X5 Person) = 132	(45X180 ltr) = 4	(46X180 ltr) = 5	(132+5) = 137	51
45	46	(45X5 Person) = 135	(46X180 ltr) = 4	(47X180 ltr) = 5	(135+5) = 140	52
46	47	(46X5 Person) = 138	(47X180 ltr) = 4	(48X180 ltr) = 5	(138+5) = 143	53
47	48	(47X5 Person) = 141	(48X180 ltr) = 4	(49X180 ltr) = 5	(141+5) = 146	54
48	49	(48X5 Person) = 144	(49X180 ltr) = 4	(50X180 ltr) = 5	(144+5) = 149	55
49	50	(49X5 Person) = 147	(50X180 ltr) = 4	(51X180 ltr) = 5	(147+5) = 152	56
50	51	(50X5 Person) = 150	(51X180 ltr) = 4	(52X180 ltr) = 5	(150+5) = 155	57
51	52	(51X5 Person) = 153	(52X180 ltr) = 4	(53X180 ltr) = 5	(153+5) = 158	58
52	53	(52X5 Person) = 156	(53X180 ltr) = 4	(54X180 ltr) = 5	(156+5) = 161	59
53	54	(53X5 Person) = 159	(54X180 ltr) = 4	(55X180 ltr) = 5	(159+5) = 164	60
54	55	(54X5 Person) = 162	(55X180 ltr) = 4	(56X180 ltr) = 5	(162+5) = 167	61
55	56	(55X5 Person) = 165	(56X180 ltr) = 4	(57X180 ltr) = 5	(165+5) = 170	62
56	57	(56X5 Person) = 168	(57X180 ltr) = 4	(58X180 ltr) = 5	(168+5) = 173	63
57	58	(57X5 Person) = 171	(58X180 ltr) = 4	(59X180 ltr) = 5	(171+5) = 176	64
58	59	(58X5 Person) = 174	(59X180 ltr) = 4	(60X180 ltr) = 5	(174+5) = 179	65
59	60	(59X5 Person) = 177	(60X180 ltr) = 4	(61X180 ltr) = 5	(177+5) = 182	66
60	61	(60X5 Person) = 180	(61X180 ltr) = 4	(62X180 ltr) = 5	(180+5) = 185	67
61	62	(61X5 Person) = 183	(62X180 ltr) = 4	(63X180 ltr) = 5	(183+5) = 188	68
62	63	(62X5 Person) = 186	(63X180 ltr) = 4	(64X180 ltr) = 5	(186+5) = 191	69
63	64	(63X5 Person) = 189	(64X180 ltr) = 4	(65X180 ltr) = 5	(189+5) = 194	70
64	65	(64X5 Person) = 192	(65X180 ltr) = 4	(66X180 ltr) = 5	(192+5) = 197	71
65	66	(65X5 Person) = 195	(66X180 ltr) = 4	(67X180 ltr) = 5	(195+5) = 200	72
66	67	(66X5 Person) = 198	(67X180 ltr) = 4	(68X180 ltr) = 5	(198+5) = 203	73
67	68	(67X5 Person) = 201	(68X180 ltr) = 4	(69X180 ltr) = 5	(201+5) = 206	74
68	69	(68X5 Person) = 204	(69X180 ltr) = 4	(70X180 ltr) = 5	(204+5) = 209	75
69	70	(69X5 Person) = 207	(70X180 ltr) = 4	(71X180 ltr) = 5	(207+5) = 212	76
70	71	(70X5 Person) = 210	(71X180 ltr) = 4	(72X180 ltr) = 5	(210+5) = 215	77
71	72	(71X5 Person) = 213	(72X180 ltr) = 4	(73X180 ltr) = 5	(213+5) = 218	78
72	73	(72X5 Person) = 216	(73X180 ltr) = 4	(74X180 ltr) = 5	(216+5) = 221	79
73	74	(73X5 Person) = 219	(74X180 ltr) = 4	(75X180 ltr) = 5	(219+5) = 224	80
74	75	(74X5 Person) = 222	(75X180 ltr) = 4	(76X180 ltr) = 5	(222+5) = 227	81
75	76	(75X5 Person) = 225	(76X180 ltr) = 4	(77X180 ltr) = 5	(225+5) = 230	82
76	77	(76X5 Person) = 228	(77X180 ltr) = 4	(78X180 ltr) = 5	(228+5) = 233	83
77	78	(77X5 Person) = 231	(78X180 ltr) = 4	(79X180 ltr) = 5	(2	

APPROVED SUBJECT TO THE CONDITIONS MENTIONED IN This Office Letter
 No. CIDCO/BP-17899/TPO(NM & K)/2021/11675
 Dtd. 01 Dec 2023



BUILT UP AREA CALCULATION

TYPICAL FLOOR (6TH & 7TH)

A	12.000 X 27.500 X 1 NO	= 330,000 SQ.MT.
		TOTAL ADDITION = 330,000 SQ.MT.

DEDUCTIONS

1	0.100 X 8.350 X 1 NO	= 0.835 SQ.MT.
2	2.000 X 2.700 X 1 NO	= 5.400 SQ.MT.
3	1.150 X 1.150 X 1 NO	= 1.323 SQ.MT.
4	1.000 X 2.650 X 1 NO	= 2.650 SQ.MT.
5	0.570 X 1.800 X 1 NO	= 1.026 SQ.MT.
6	0.750 X 1.720 X 1 NO	= 1.341 SQ.MT.
7	1.000 X 1.800 X 1 NO	= 1.800 SQ.MT.
8	0.450 X 3.050 X 1 NO	= 1.373 SQ.MT.
9	1.450 X 0.080 X 1 NO	= 0.116 SQ.MT.
10	2.450 X 3.690 X 1 NO	= 9.040 SQ.MT.
11	2.680 X 2.280 X 1 NO	= 6.110 SQ.MT.
12	0.870 X 2.850 X 1 NO	= 2.460 SQ.MT.
13	3.000 X 0.650 X 1 NO	= 1.950 SQ.MT.
14	1.150 X 1.000 X 1 NO	= 1.150 SQ.MT.
15	0.350 X 4.250 X 1 NO	= 1.488 SQ.MT.
16	0.550 X 3.200 X 1 NO	= 1.760 SQ.MT.
17	0.100 X 3.900 X 1 NO	= 0.390 SQ.MT.
18	0.350 X 1.800 X 1 NO	= 0.665 SQ.MT.
19	1.800 X 1.650 X 1 NO	= 2.970 SQ.MT.
20	1.950 X 2.800 X 1 NO	= 5.460 SQ.MT.
21	0.400 X 0.130 X 1 NO	= 0.052 SQ.MT.
22	0.850 X 1.220 X 1 NO	= 1.037 SQ.MT.
23	0.800 X 1.050 X 1 NO	= 0.840 SQ.MT.
24	2.000 X 3.600 X 1 NO	= 7.200 SQ.MT.
		TOTAL DEDUCTION = 58.456 SQ.MT.
		TOTAL BUILT UP AREA [A - Y] = 271.544 SQ.MT.

PROJECT
 DEVELOPMENT PERMISSION FOR PROPOSED RESIDENTIAL CUM COMMERCIAL BUILDING ON PLOT NO. 47C, SECTOR-34A, KHARGHAR, NAVI MUMBAI.

OWNERS/
 Owner's Declaration -
 We undertake hereby confirm that I/We would abide by plans approved by Authority. I/We would execute the structure as per approved plans. Also I/We would execute the work under supervision of proper technical persons so as to ensure the quality and safety at the work site.

M.S. PINNACLE CONSTRUCTION.

MR. MOHD. RAIS TAKSEEN KHAN. MR. ABDUL LATIF ALI PARKAR.

MR. MAHENDRAKUMAR M. MOURYA. MR. ASHFAQ AHMED RAIS KHAN.

ARCHITECTS



Ac. H. P. DHAVALE
 HEAD OFF. BRANVALEY BLDG. SARAKSARI BLDG. JOSEPHNAGAR RD. MUMBAI 400 006.
 Signature of Architect
 BRANCH OFF. M. SHAMU COMMERCIAL COMPLEX, PLOT 47C SECTOR 34A, KHARGHAR, NAVI MUMBAI. TEL: 27664411
 CA/92/14783. TEL: 27668110, 27668107.