

श्री श्री प्रमिट जयन्तिलाल जाकहरीया  
श्री श्री प्रमिट जयन्तिलाल जाकहरीया  
श्री श्री प्रमिट जयन्तिलाल जाकहरीया  
श्री श्री प्रमिट जयन्तिलाल जाकहरीया  
श्री श्री प्रमिट जयन्तिलाल जाकहरीया

श्री. अशोक को. शर्मा इंजीनियरिंग  
श्री. अशोक को. शर्मा इंजीनियरिंग  
श्री. अशोक को. शर्मा इंजीनियरिंग  
श्री. अशोक को. शर्मा इंजीनियरिंग  
श्री. अशोक को. शर्मा इंजीनियरिंग

SCALE = 1:100, 1:200, 1:500, 1:5000

DESCRIPTION OF PROPOSAL & PROPERTY

PROPOSED PLAN FOR LETTER OF APPROVABILITY (LOA) FOR RESIDENTIAL CUM COMMERCIAL BUILDING (GROUND + 24TH. PART) UNDER ACCOMMODATION RESERVATION OF VEGETABLE MARKET AS PER SANCTION D.P. RESERVATION NO.(252) & AS PER DRAFT S.N.O. 124/125/159/161(PT), 125/5/125/7/125/9(PT); 126/3/2(PT), 161/3/2(PT) & 161/3/1(D/PT)

AT VILLAGE KAMATGHAR, TALUKA BHIWANDI DIST. THANE

FOR SHREE MUNISUVRAT REALTOR LLP.

Partners

- (1) SHRI ATUL KAPURCHAND GOSRANI.
- (2) SHRI PUNIT ATUL GOSRANI.
- (3) SHRI SAGAR ATUL GOSRANI.
- (4) SHRI JAYANTILAL KANU JAKHARIYA.
- (5) SHRI NILESH JAYANTILAL JAKHARIYA.
- (6) SHRI PARAG JAYANTILAL JAKHARIYA.
- (7) SHRI PRAMIT JAYANTILAL JAKHARIYA.
- (8) SHRI CHETAN MANSUKHLAL SHAH.

OWNER'S NAME

SHREE MUNISUVRAT REALTORS LLP.

Partners

- (1) SHRI ATUL KAPURCHAND GOSRANI.
- (2) SHRI PUNIT ATUL GOSRANI.
- (3) SHRI SAGAR ATUL GOSRANI.
- (4) SHRI JAYANTILAL KANU JAKHARIYA.
- (5) SHRI NILESH JAYANTILAL JAKHARIYA.
- (6) SHRI PARAG JAYANTILAL JAKHARIYA.
- (7) SHRI PRAMIT JAYANTILAL JAKHARIYA.
- (8) SHRI CHETAN MANSUKHLAL SHAH.

ENGINEERS

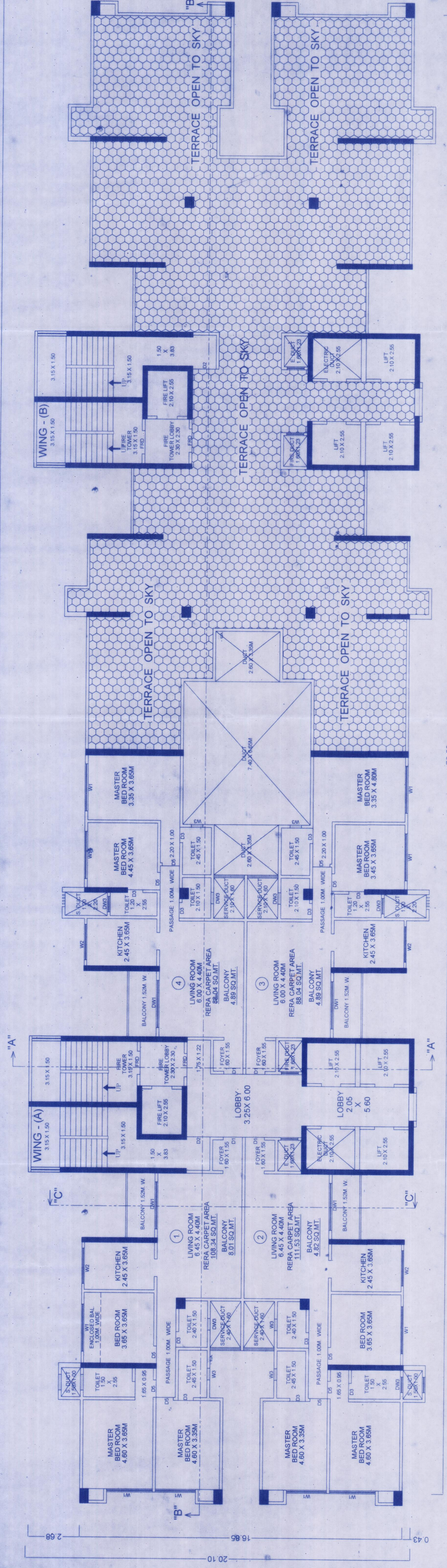
ENGINEERS

R. R. CONSULTING ENGINEERS  
ENGINEERS AND SURVEYORS

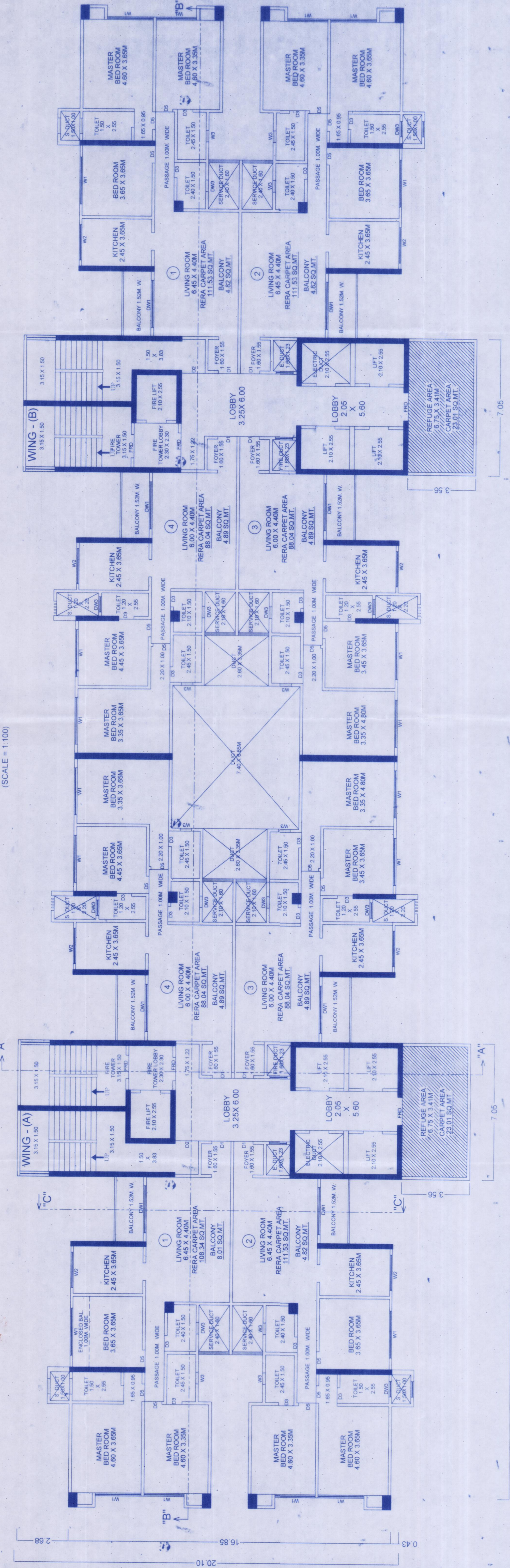
MR. RAVISH AB. REHMAN DHURU

LICENCE. NO. STATE/R/2023/APL/07290

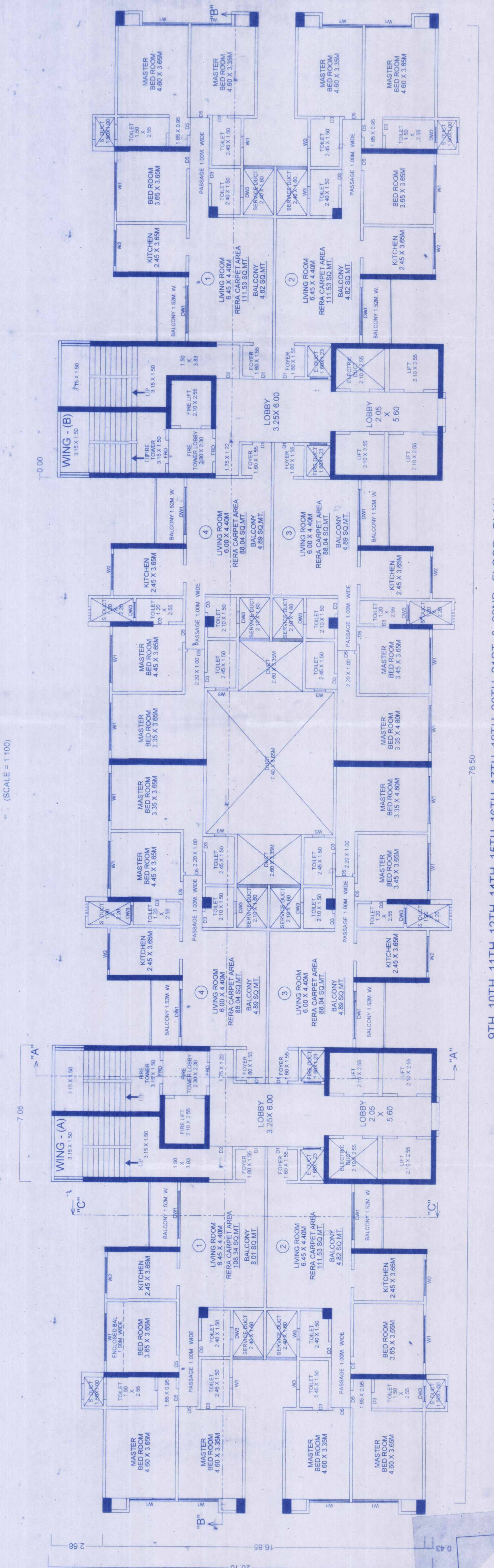
17/1 - A - KAP - ISLAMPURA BHIWANDI.



24TH. (PART) FLOOR PLAN (SCALE = 1:100)



13TH, 18TH, & 23RD. FLOOR PLAN (REFUGE FLOOR) (SCALE = 1:100)



9TH, 10TH, 11TH, 12TH, 14TH, 15TH, 16TH, 17TH, 19TH, 20TH, 21ST & 22ND. FLOOR PLAN (SCALE = 1:100)