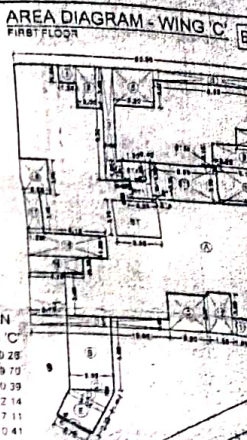


R.G. AREA CALCULATIONS

ADDITIONS

1	=	0.50	x	10.96	x	0.62	x	1	=	37.92
2	=	0.50	x	10.96	x	2.17	x	1	=	11.89
3	=	0.50	x	9.84	x	0.70	x	1	=	31.05
4	=	0.50	x	12.87	x	0.44	x	1	=	24.72
5	=	0.50	x	11.80	x	0.79	x	1	=	4.54
6	=	0.50	x	14.97	x	3.37	x	1	=	33.58
7	=	0.50	x	12.87	x	0.54	x	1	=	4.40
8	=	0.50	x	12.87	x	3.71	x	1	=	31.76
9	=	0.50	x	19.99	x	1.90	x	1	=	19.51
10	=	0.50	x	17.65	x	10.72	x	1	=	19.51
11	=	0.50	x	17.65	x	2.21	x	1	=	19.51
TOTAL ADDITIONS = 224.98										



BUILT UP AREA CALCULATION FOR FIRST FLOOR - WING C

A	=	20.56	x	21.90	x	1	=	450.25		
B	=	3.35	x	5.88	x	1	=	19.70		
C	=	1.2	x	3.55	x	0.23	x	1	=	0.39
D	=	3.05	x	2.33	x	1	=	7.11		
E	=	2.75	x	0.15	x	1	=	0.41		
TOTAL ADDITION = 490.01										

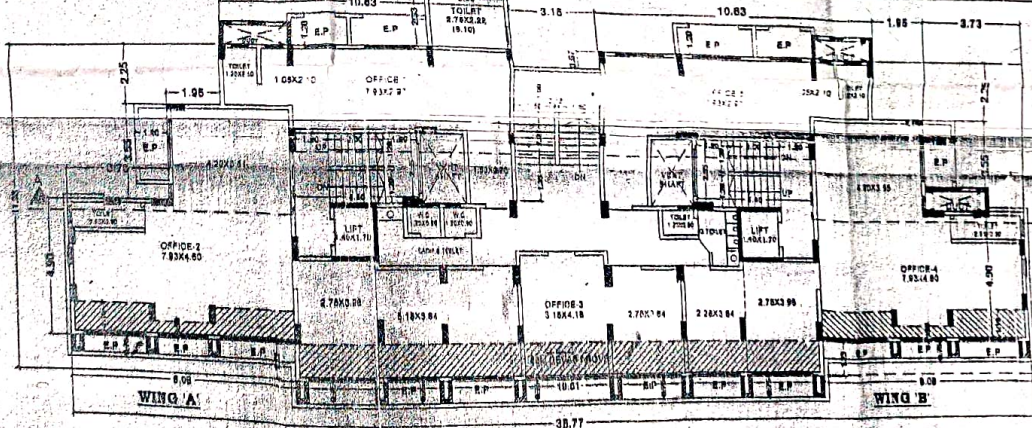
DEDUCTIONS

1	=	1.35	x	1.45	x	2	=	3.92
2	=	2.03	x	3.40	x	1	=	6.90
3	=	0.90	x	0.30	x	1	=	0.27
4	=	0.45	x	1.85	x	1	=	0.74
5	=	3.20	x	3.07	x	2	=	19.55
6	=	0.63	x	0.82	x	1	=	0.52
7	=	1.73	x	3.45	x	1	=	5.97
8	=	3.18	x	1.35	x	1	=	4.29
9	=	5.13	x	1.88	x	1	=	9.54
10	=	4.88	x	3.30	x	1	=	16.10
11	=	2.25	x	3.20	x	1	=	7.20
12	=	1.88	x	3.40	x	1	=	6.38
13	=	10.85	x	0.82	x	1	=	8.79
14	=	2.78	x	3.45	x	1	=	9.54
15	=	4.23	x	1.35	x	1	=	5.71
16	=	0.15	x	1.85	x	1	=	0.28
17	=	1.35	x	3.45	x	1	=	4.62
18	=	2.25	x	3.95	x	1	=	8.98
19	=	1.35	x	3.15	x	1	=	4.25
20	=	2.25	x	0.50	x	1	=	1.12
21	=	1.35	x	1.80	x	1	=	2.43
22	=	0.40	x	1.25	x	1	=	0.50
23	=	5.30	x	3.18	x	1	=	16.70
24	=	0.25	x	0.15	x	1	=	0.04
25	=	1.80	x	1.85	x	1	=	3.33
TOTAL DEDUCTION = 179.23								

NET TOTAL AREA = 300.78

BALCONY AREA CALCULATIONS FIRST FLOOR

B5	=	3.35	x	1.00	x	7	=	23.45
TOTAL AREA = 23.45								
PROPOSED BALC. AREA = 23.45								
PERMISSIBLE BALC. AREA = 30.08								
EXCESS BALC. AREA = NIL								



FIRST FLOOR PLAN (WING - A, B)
SCALE = 1:100
EARLIER APPROVED

