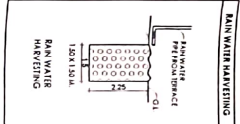
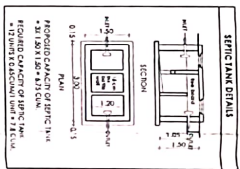


Project: I. Area Statement
PROPOSED RESIDENTIAL & COMMERCIAL BUILDING ON
PLOT NO. 1, SNo. 872/6/2/1, ATVIJAYE WASHIK
FOR
ANNA BUDGON THROUGH PARTNERS
MR RANJAN KUMAR
MR SUNIL RAMCHANDRA PHADANE

APPROVAL

The Plans submitted by the applicant are approved in accordance with the provisions of the B.S.P. Code of Building Regulations. This approval is granted on the condition that the applicant shall comply with all the provisions of the B.S.P. Code of Building Regulations.
M/201/125/2025

APPROVED
Municipal Engineer
Mumbai Municipal Corporation
RE



Sl. No.	Particulars	Unit	Qty
1	03 Water supply (not for fire use)	lpm	45.18
2	04 Electrical (not for fire)	nos	108.14
3	05 Electrical (for fire)	nos	203.14
4	Proposed Water supply rate		1500.00
5	Proposed electrical rate		1500.00

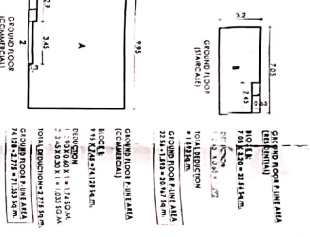
Water consumption statement

Sl. No.	Particulars	Unit	Qty
1	01 Water supply (not for fire use)	lpm	45.18
2	02 Water supply (for fire use)	lpm	0.00
3	03 Water supply (not for fire use)	lpm	45.18
4	04 Electrical (not for fire)	nos	108.14
5	05 Electrical (for fire)	nos	203.14

Water consumption statement

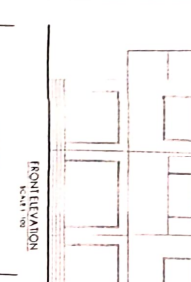
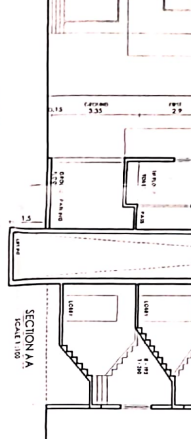
Sl. No.	Particulars	Unit	Qty
1	01 Water supply (not for fire use)	lpm	45.18
2	02 Water supply (for fire use)	lpm	0.00
3	03 Water supply (not for fire use)	lpm	45.18
4	04 Electrical (not for fire)	nos	108.14
5	05 Electrical (for fire)	nos	203.14

Sl. No.	Particulars	Unit	Qty
1	01 Water supply (not for fire use)	lpm	45.18
2	02 Water supply (for fire use)	lpm	0.00
3	03 Water supply (not for fire use)	lpm	45.18
4	04 Electrical (not for fire)	nos	108.14
5	05 Electrical (for fire)	nos	203.14



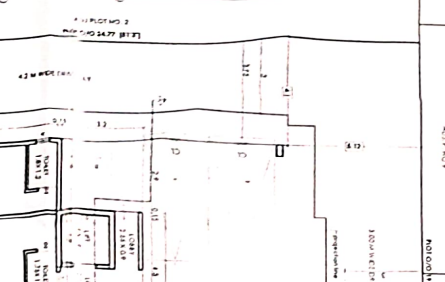
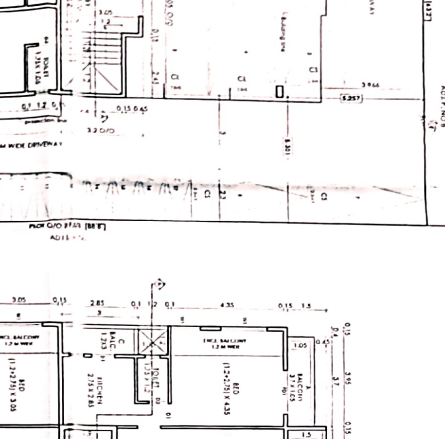
Sl. No.	Particulars	Unit	Qty
1	01 Water supply (not for fire use)	lpm	45.18
2	02 Water supply (for fire use)	lpm	0.00
3	03 Water supply (not for fire use)	lpm	45.18
4	04 Electrical (not for fire)	nos	108.14
5	05 Electrical (for fire)	nos	203.14

Sl. No.	Particulars	Unit	Qty
1	01 Water supply (not for fire use)	lpm	45.18
2	02 Water supply (for fire use)	lpm	0.00
3	03 Water supply (not for fire use)	lpm	45.18
4	04 Electrical (not for fire)	nos	108.14
5	05 Electrical (for fire)	nos	203.14



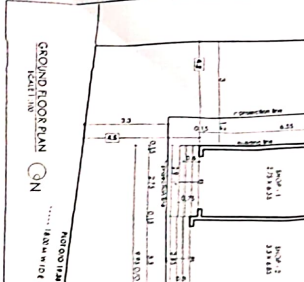
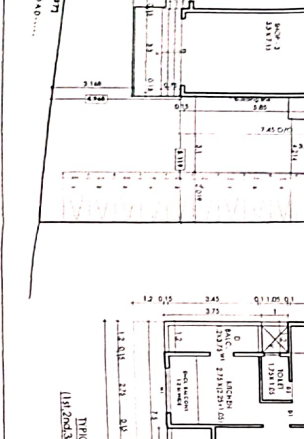
Sl. No.	Particulars	Unit	Qty
1	01 Water supply (not for fire use)	lpm	45.18
2	02 Water supply (for fire use)	lpm	0.00
3	03 Water supply (not for fire use)	lpm	45.18
4	04 Electrical (not for fire)	nos	108.14
5	05 Electrical (for fire)	nos	203.14

Sl. No.	Particulars	Unit	Qty
1	01 Water supply (not for fire use)	lpm	45.18
2	02 Water supply (for fire use)	lpm	0.00
3	03 Water supply (not for fire use)	lpm	45.18
4	04 Electrical (not for fire)	nos	108.14
5	05 Electrical (for fire)	nos	203.14



Sl. No.	Particulars	Unit	Qty
1	01 Water supply (not for fire use)	lpm	45.18
2	02 Water supply (for fire use)	lpm	0.00
3	03 Water supply (not for fire use)	lpm	45.18
4	04 Electrical (not for fire)	nos	108.14
5	05 Electrical (for fire)	nos	203.14

Sl. No.	Particulars	Unit	Qty
1	01 Water supply (not for fire use)	lpm	45.18
2	02 Water supply (for fire use)	lpm	0.00
3	03 Water supply (not for fire use)	lpm	45.18
4	04 Electrical (not for fire)	nos	108.14
5	05 Electrical (for fire)	nos	203.14



APPROVED
Municipal Engineer
Mumbai Municipal Corporation
RE

At Kshili, B. Dhonde
Architect & Designer
Architect

At Kshili, B. Dhonde
Architect & Designer
Architect

At Kshili, B. Dhonde
Architect & Designer
Architect