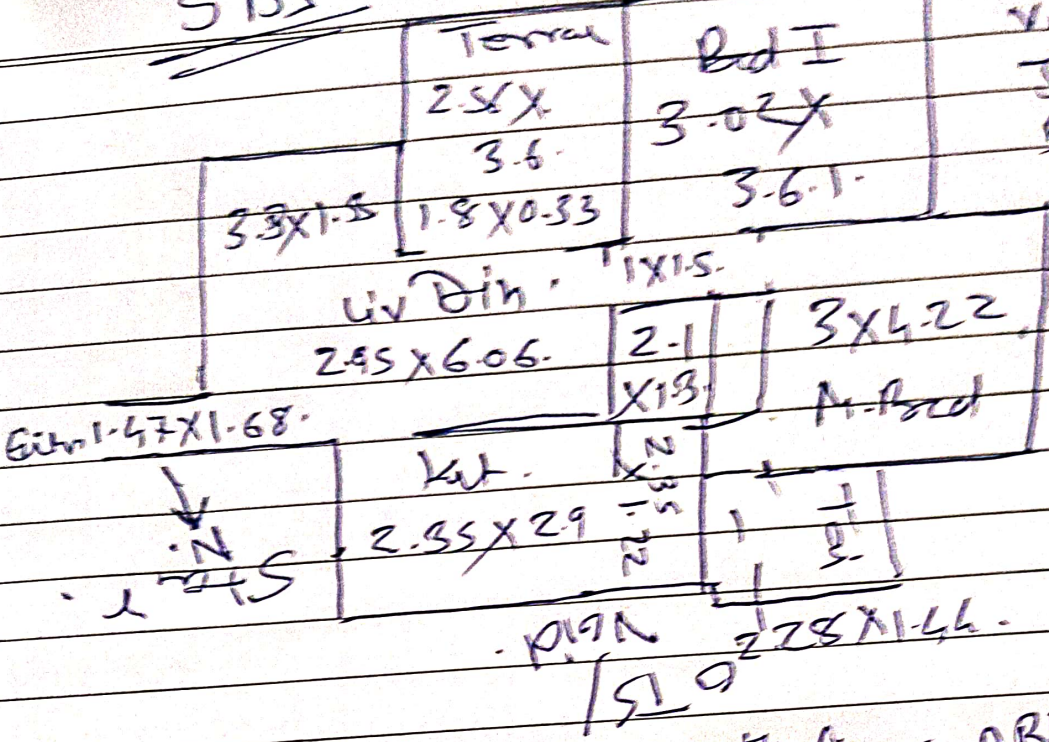


11/12/24

OTS Mr. Sushil Bhasme -

SBI



visit details  
 Jira-7385175049  
 Bhasme

OTS

Add- Flat No-1002, 10th Floor, A Bldg, Green Olive,  
 Hingewadi, Pune -  
 Landmark - Near Persistent Systems, Hingewadi IT Park  
 it is @ 11 km from Chinchwad Rly Stn, Mumbai - Pune highway  
 IS - 31 km.

Boundaries-

- N - Road / undeveloped plot - Staircase / void
- S - Rohan Prarthana - undeveloped land - OTS
- E - Various Residential Bldgs - Entrance / passage
- W - City Centre - IT Park (Phase-1) - OTS

Flat consist - Entrance lobby, Living Dining, kitchen with utility  
 common Toilet, Bed-1, Bed with att. Toilet & Terrace  
 2 BHK.

Structure - Value - 70-75 lacs,  
 P + 12 stories, 2 lifts -