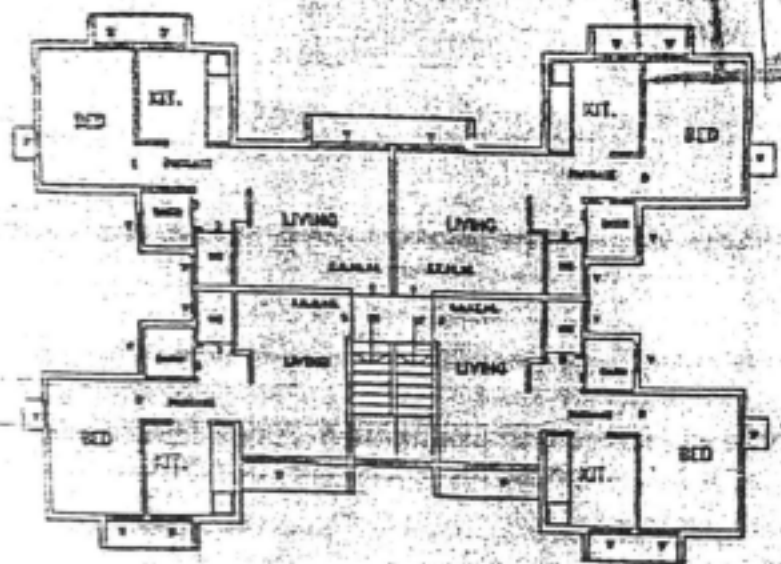


ACCOMMODATION STATEMENT

ACCOMMODATION	CARPET AREA	BUILT UP AREA
LIVING	10.03 SQ. M.	
BED	7.48 " "	
KITCHEN	4.51 " "	
BATH	1.47 " "	
W.C.	1.12 " "	
PASSAGE	3.33 " "	
	27.94 " "	34.87 SQ. M.

CIDCO AIROLI/GHANSOLI HOUSING ESTATE

ANNEXURE A TO THE AGREEMENT FOR SALE OF APARTMENT
 ANNEXURE B TO THE AGREEMENT FOR SALE OF APARTMENTS



TYPICAL FLOOR PLAN (GR., FIRST, SECOND, THIRD.)

I, A. K. SOHONI, Architect do hereby certify that this is an accurate copy of the typical floor plan of a Type building as shown above and approved by the local authority namely City & Industrial Development Corporation of Maharashtra Limited within whose jurisdiction the building is located and that the said plans fully and accurately depict the line diagram apartment numbers and dimensions of apartment as built.

I solemnly affirm that what is stated above is true to the best of my knowledge, information and belief.

Solemnly affirmed at CBD Belapur,
 This 20th day of december 1990.

A. K. Sohoni
 (A. K. SOHONI)
 Architect,
 CIDCO LTD., CIDCO BHAVAN,
 CBD BELAPUR.



7-6
 23/8-82
 2009

Asst. Marketing Officer
 (DRS-87) CIDCO LTD.
 Asst. Marketing Officer
 (DRS-87) CIDCO LTD.