

APPROVED

The Plans amended in
As per the conditions mentioned in
the accompanying Memorandum
Certificate No. **AAKP/2011/11/2022**
23/7/2022

Executive Engineer
TOWN PLANNING
Nashik Municipal Corporation
Nashik

HEMANT DUGAD
Architects & Interior Designers
3/4 Gopal Park, Old Pune Colony
Shriharipuram, Nashik
Dist. Nashik - 422002
Maharashtra (India)
Dial: 0253-257518,
Fax: 0253-257017
E-mail: hemantdugad@gmail.com

DOORS AND WINDOWS
D1 1.2 X 2.0 TYPICAL DOOR
D2 1.8 X 2.0 TYPICAL DOOR
D3 0.7 X 2.10 TYPICAL DOOR
W 1.50 X 1.20 M S GLAZED WINDOW
W 1.50 X 1.20 M S GLAZED WINDOW
W2 0.90 X 2.20 M S GLAZED WINDOW
V 0.90 X 0.90 M S GLAZED WINDOW

PROJECT -
PROPOSED RESIDENTIAL CUM COMMERCIAL BUILDING ON
PLOT NO.3+4+10+11+12+13 S. NO. 388/1+2A(P) NASHIK.
FOR :- JAY WIN DEVELOPERS

PROJECT -
PROPOSED RESIDENTIAL CUM COMMERCIAL BUILDING ON
PLOT NO.3+4+10+11+12+13 S. NO. 388/1+2A(P) NASHIK.
FOR :- JAY WIN DEVELOPERS

HEMANT DUGAD
Architects & Interior Designers
3/4 Gopal Park, Old Pune Colony
Shriharipuram, Nashik
Dist. Nashik - 422002
Maharashtra (India)
Dial: 0253-257518,
Fax: 0253-257017
E-mail: hemantdugad@gmail.com

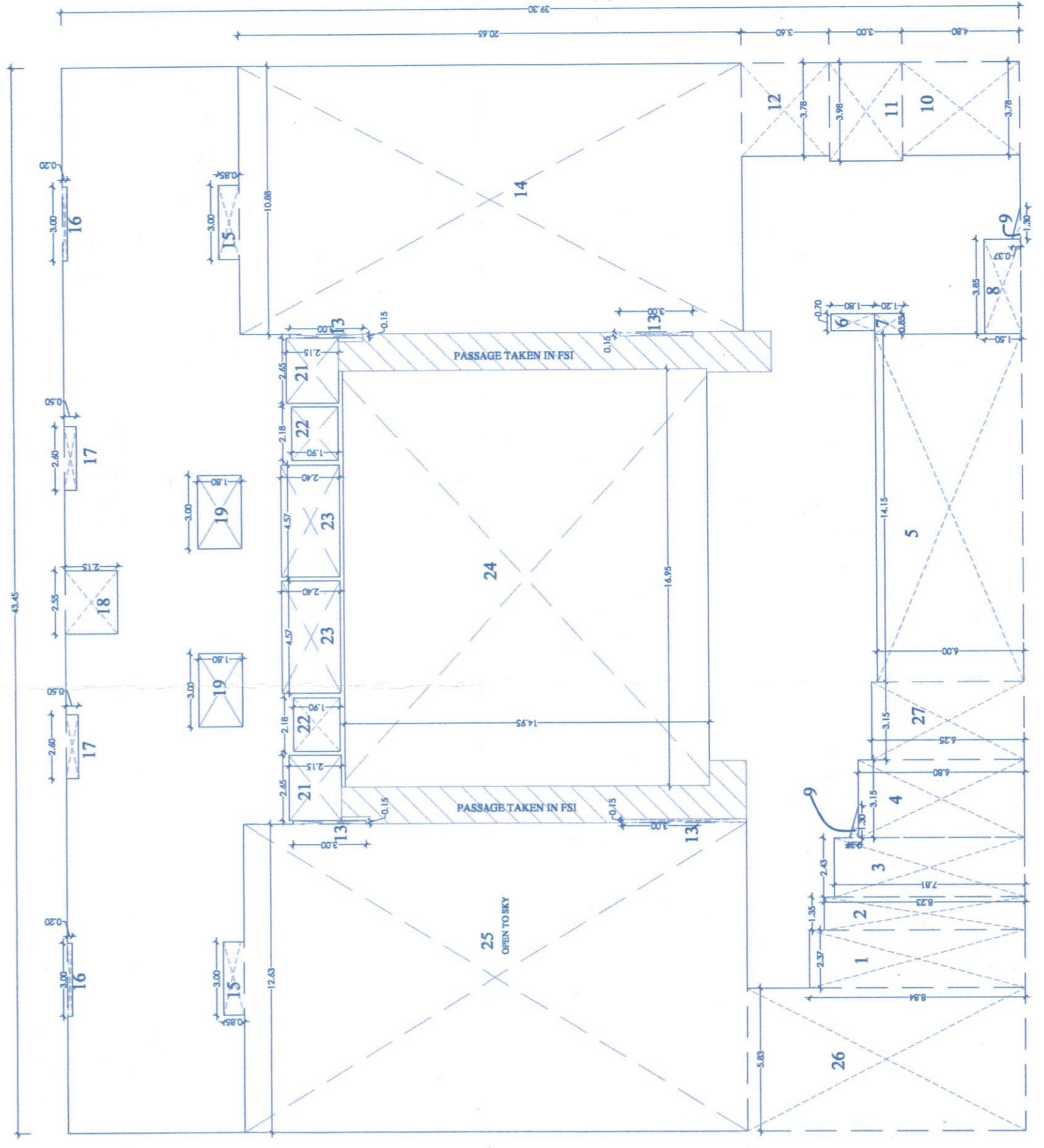
BALCONY AREA CALCULATION FOR WING A & B
2ND FLOOR

NO.	LENGTH	WIDTH	AREA Sq.m.
B1	2.52	1.50	3.78
B2	2.43	1.54	3.74
B3	3.15	1.65	5.20
B4	3.30	1.20	3.96
B5	2.40	1.00	2.40
B6	2.95	1.20	3.54
B7	3.10	1.20	3.72
B8	2.10	1.20	2.52
B9	4.00	1.50	6.00
B10	3.15	1.00	3.15
B11	3.60	1.20	4.32
B15	3.15	1.00	3.15
B16	3.53	1.20	4.24
B17	3.23	1.20	3.88
B18	2.60	1.00	2.60
B21	4.15	1.00	4.15
TOTAL			84.52

AREA CALCULATION FOR WING A & B
2ND FLOOR

NO.	LENGTH	WIDTH	AREA Sq.m.
1	43.45	39.30	1707.59
2	2.37	8.84	20.95
3	1.35	8.23	11.11
4	2.43	7.81	19.98
5	3.15	6.80	21.44
6	14.15	6.00	84.90
7	0.70	1.20	0.84
8	0.85	1.20	1.02
9	1.30	1.50	1.95
10	3.78	4.80	18.14
11	3.98	3.60	14.35
12	3.78	3.60	13.61
13	0.15	3.00	0.45
14	10.88	20.65	224.67
15	3.00	0.85	2.55
16	3.00	0.20	0.60
17	2.60	0.50	1.30
18	2.55	2.15	5.48
19	3.00	1.80	5.40
20	2.65	2.15	5.70
21	2.18	1.90	4.14
22	4.57	2.40	10.97
23	16.95	2.40	40.68
24	4.95	2.40	11.88
25	2.63	2.15	5.65
26	5.83	1.80	10.49
27	3.15	6.25	19.69
TOTAL			1103.22
TOTAL BUILT-UP	1707.5950	1103.22	604.37

AREA DIAGRAM & CALCULATION FOR WING A & B 2ND FLOOR
SCALE: 1:200



Carpet Area details of Flat / unit

WING	FLOOR NO.	Shop Flat / unit No.	Floor area of flat / unit (Including Internal wall & Excluding External wall)	BALCONY AREA	TOTAL CARPET AREA / unit	Typical flat
B	2ND floor	B 201	56.91	8.71	65.6200	1
		B 202	77.14	6.33	83.4700	1
		B 205	69.59	11.34	80.9300	1
		B 206	52.98	6.99	59.9700	1
TOTAL						4

Carpet Area details of Flat / unit

WING	FLOOR NO.	Shop Flat / unit No.	Floor area of flat / unit (Including Internal wall & Excluding External wall)	BALCONY AREA	TOTAL CARPET AREA / unit	Typical flat
A	2ND floor	A 201	56.79	8.25	65.0400	1
		A 202	31.79	14.39	46.1800	1
		A 205	77.14	6.33	83.4700	1
		A 206	56.91	8.71	65.6200	1
TOTAL						4



WING A & B
2nd FLOOR PLAN.
SCALE: 1:100