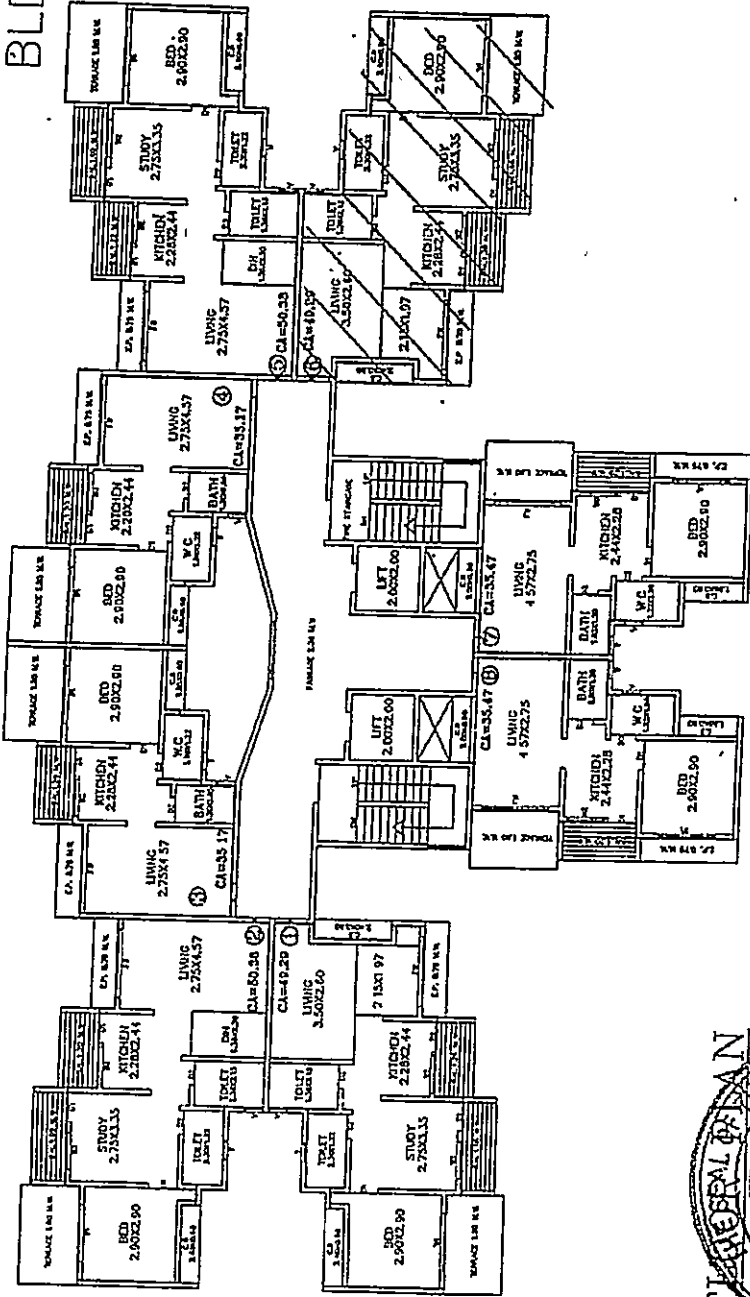


BLDG. TYPE - A



FLAT NO :- 1406

FLOOR : 14<sup>th</sup> Floor

AREA : 49.29 sq.m.

PROPOSE BLDG. ON PLOT BEARING ON S.NO. 46 H.NO: 17/2, S.No. 47 AT VILLAGE MOHANE, TAL. KALYAN, DIST- THANE

REGISTRATION NO. 2012-13/332/234 DATED: 11/12/2013

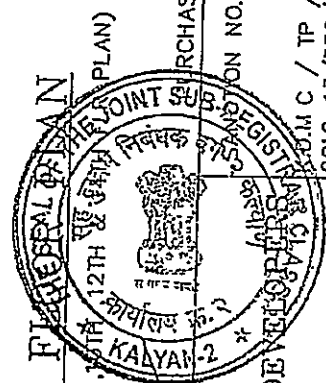
DEVELOPERS :- MAULI KRUPA DEVELOPERS SHANTARAM PRIDE OPP SHANTARAM PATIL SCHOOL SHANTARAM NAGAR, MOHANE, AMBIVALI (E)

BUILDERS :-

ARCHITECT: ANIL R. NIRGUDE.

**VITAN CONSULTANTS**  
ARCHITECTS & ENGINEERS

B-101 Bindu Tower, 1st Floor, Opp. Lourdes English School, Santoshi - Mata Rd. Kalyan (W)



DEVELOPERS: *[Signature]* ARCHITECT: *[Signature]*

Handwritten notes and numbers: 42, 56, 258, 300, 15, 21, 21

1998

1998

1998

1998

1998

1998

1998

1998