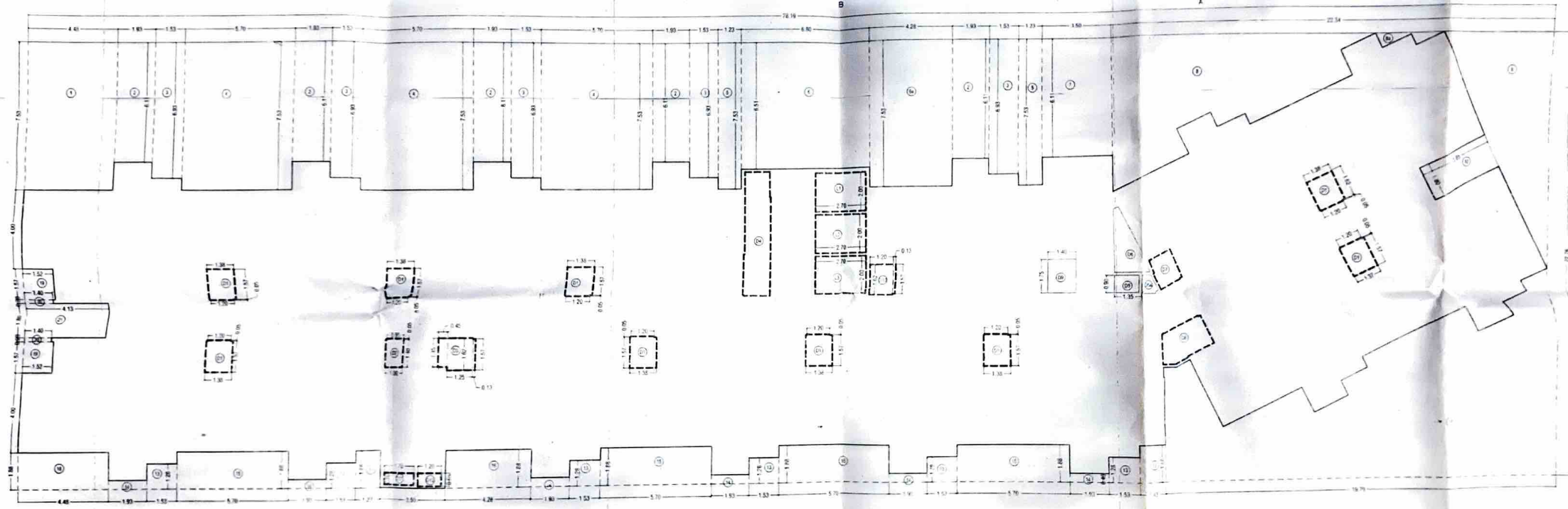


TYPICAL FLOOR PLAN
 (1st to 7th, 9th to 12th, 14th to 17th, 19th to 22nd fl.)
 SCALE - 1 : 100



AREA DIAGRAM FOR TYPICAL FLOOR PLAN

(1st to 7th, 8th to 12th, 14th to 17th, 19th to 22nd F.)

SCALE - 1/100

Proforma - I

PROPOSED RESIDENTIAL/COMMERCIAL COMPLEX ON S no.59/1, 60/1, 60/2/A, 60/2/B, 61/1, 61/2/A,61/2/B, 62/1, 62/2, 63/1, 63/2, 63/3, 63/4, 63/5, 63/6, 63/7, 63/8/A, 63/8/B, 63/9/A,63/9/B, 63/10/1/A, 63/10/1/B, 63/10/2, 64/1, 64/2, 64/3, 64/4, 64/5, 64/6, 64/7, 64/8, 64/9,65/1, 65/2, 65/3, 65/4, 65/5, 66, 67, 68/1, 68/2, 68/3, 68/4, 68/5, 69/1/A, 69/1/B, 69/2, 69/3/A, 69/3/B, 69/4A, 69/4B, 69/5, 69/6, 70/1, 70/2, 70/3, 70/4, 70/5, 70/6, 70/7, 70/8, 70/9,70/10/A, 70/10/B, 71/1, 71/2/A, 71/2/B, 71/3/A, 71/3/B, 71/4, 71/5, 71/6, 71/7, 71/9, 72/1, 72/2, 72/3, 72/4, 72/5, 72/6, 72/7, 72/8/A, 72/8/B, 72/9/A, 72/9/B, 73/1, 73/2, 73/3, 73/4, 73/5/A, 73/5/B, 73/6, 73/7 at village Balkum.

Drawing Sheet no
14/86

S no.10/1/A/1/1, 10/1/A/1/2, 10/1/A/2, 10/1/A/3, 10/1/A/4,10/1/A/5, 11/1, 11/2, 23/1, 23/2, 23/3/A, 23/3/B,23/3/C, 23/4, 23/5, 23/6, 25/1, 25/2/A,25/2/B, 25/2/C, 25/2/D, 26/1, 26/2/A, 26/2/B, 26/2/C, 26/2/D, 26/2/E, 30/1/A, 30/1/B,30/1/C, 30/1/D, 30/2/A, 30/2/B, 30/3, 30/4/A, 30/4/B, 30/5/A, 30/5/B, 31/1/A, 31/1/B, 31/2, 31/3, 31/4, 32/1/1, 32/1/5, 32/1/6, 32/1/7, 32/1/8, 32/1/9, 32/1/10, 32/1/11, 32/1/12, 32/2A,32/2B, 32/3, 33/1, 33/3, 33/4, 33/5, 33/6, 33/7, 92/1, 92/2, 93/2/2, 93/2/3 at village Dhokali,

S.no. 49/1/C, 50/12B/3, 50/12B/2, 50/13, 51/1B, 51/2, 51/3, 52/1C, 52/2/A, 52/2/B, 52/3/A, 52/3/B, 52/4, 52/5, 52/6, 53/1/C, 53/1/D, 53/2, 53/3/A, 53/3/B, 53/4/A, 53/4/B, 53/5/A,53/5/B, 53/6, 53/7B, 53/8, 54/1, 54/2, 55/5, 55/7/B, 55/7/C, 55/10B, 55/11, 55/12/A, 55/12/B,55/13/A, 55/13/B, 55/14, 55/15, 60/8B, 60/9B, 60/10A, 60/11A/1, 60/11A/2, 60/11B, 60/11C,60/11D, 60/12, 60/13, 60/14, 60/16/A, 60/16/B, 60/17, 60/18, 60/19/A, 60/19/B, 60/20/A/1,60/20/A/2, 60/20/A/3, 60/20/A/4, 104/1A, 104/1B, 104/1C, 104/2, 274/1 at village Kolshet. Thane (W).

CONTENTS OF SHEET

TYPICAL FLOOR PLAN, AREA DIAGRAM & CALCULATION, TERRACE FLOOR PLAN
PARKING STATEMENT, CARPET AREA STATEMENT

(PLOT - B2)

TOWER - 3

(GR./ST. + 23RD FLOOR)

Amended



Plans are approved Subject to conditions
Prescribed in Permit No. V.P. S05/0083/14
TMC/TD-DP/TPS/015/11/1/1 Dated 27/09/2024
27/09/2024

[Signature]
Deputy Engineer
(TDD)

[Signature]
Executive Engineer
(TDD)

Thane Municipal Corporation
The City of Thane

सावधान

STAMPS OF APPROVAL OF PLANS

"मंजूर नकाशांनुसार बांधकाम न करण नयेच
निकट नकाशा नियमावलीनुसार आवश्यक कागद
परवानका बांधकाम बांधकाम सहायक
प्रदेशीय व राज्य स्तरावर अधिनियमान्त कलम 102
अनुसार दखलपात्र गुन्हा आहे. त्यासाठी जास्तीत
जास्त 3 वर्षे कैद व रु. 5000/- दंड होऊ शकतात"

Owner's Declaration

I/We undersigned hereby confirm that I/We would abide by plans approved by Authority / Collector. I/We would execute the structure as per approved plans. Also I/We would execute the work under supervision of proper technical person so as to ensure the quality and safety at the work site.



M/S. MACROTECH DEVELOPERS LTD
412, floor - 4, 17G Vardhaman Chamber,
Cawasji Patel Road, Horniman Circle Fort, Mumbai,
Mumbai City, Maharashtra, India - 400001.

Owner (s) name and signature

Architect name and signature



PRADEEP KAMBLE & ASSOCIATES

B/101, 1st fl. Jakh Bautera Complex,
Pandit Malviya Path, Ramnager,
Dombivli (E) 421 201. Tel -2862642

Job No.	Drawing No.	Scale	Drawn by	Checked by	Registration no. of Architect
S05/0083/14	5/6	1:100			CA / 87/10471