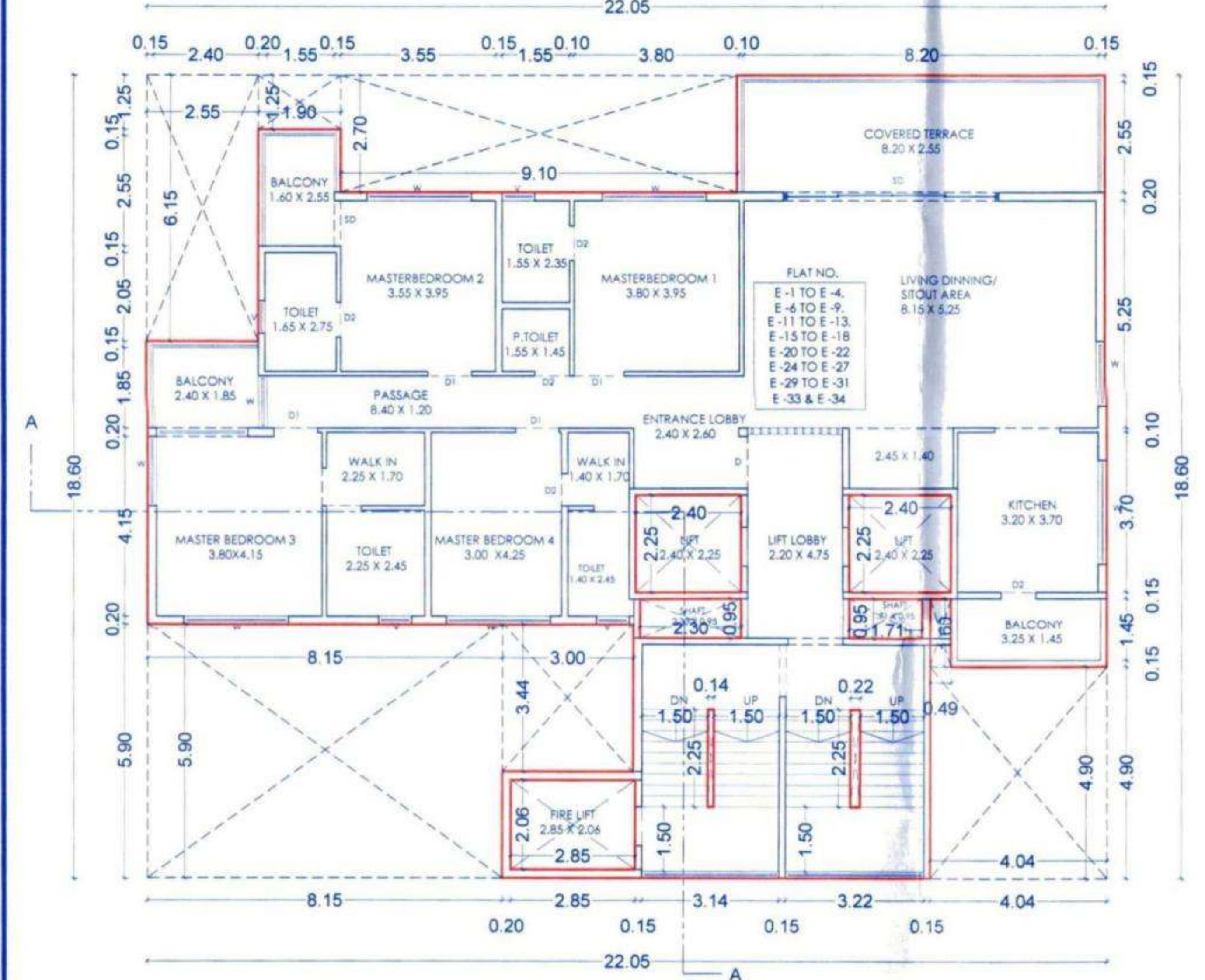
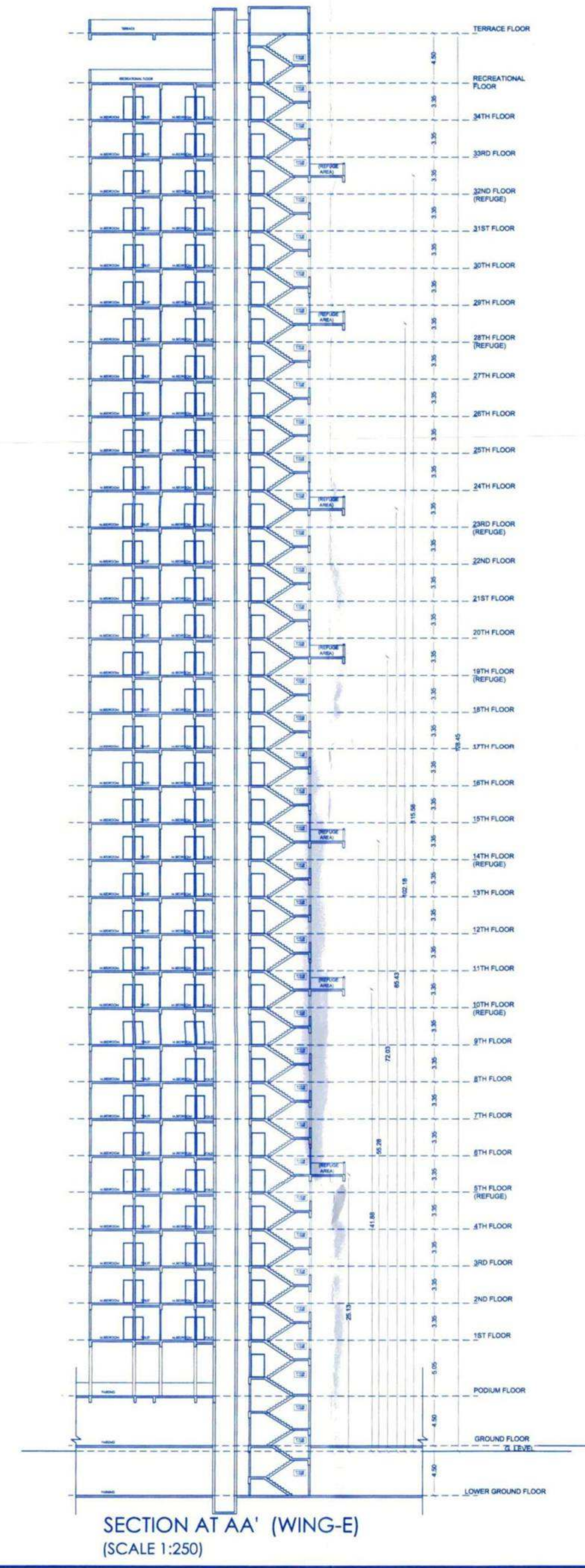


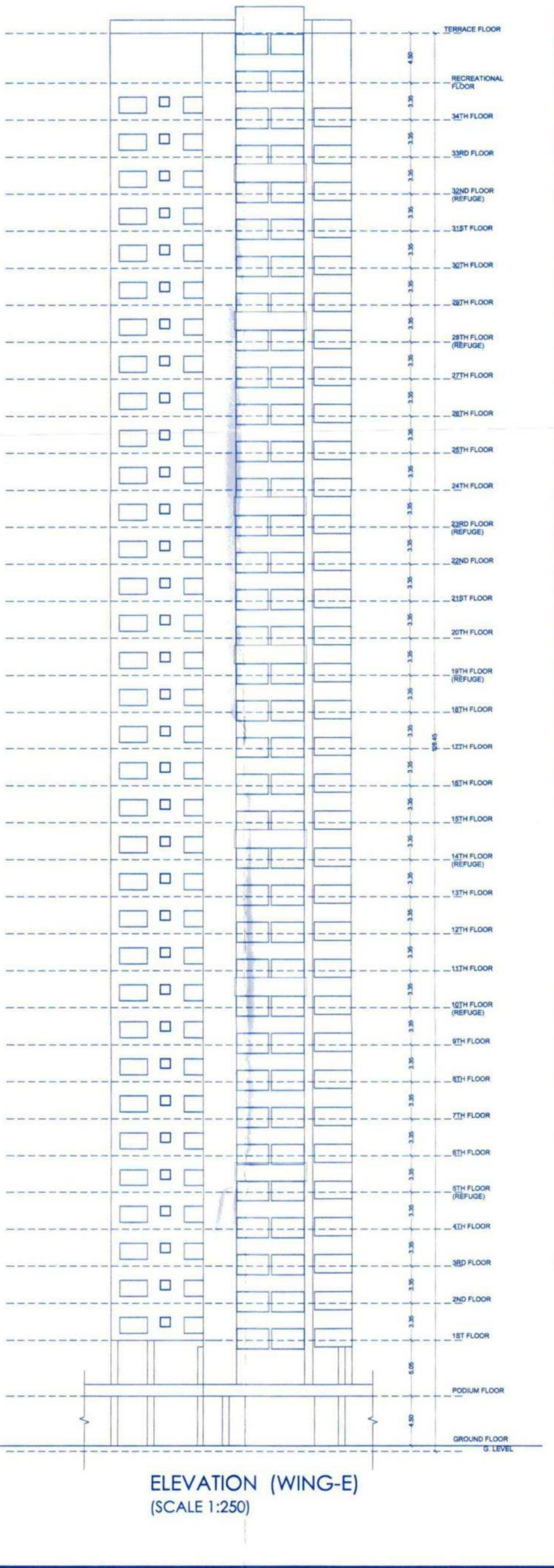
5TH, 10TH, 14TH, 19TH, 23RD, 28TH, 32ND FLOOR (REFUGE) PLAN (WING-E) (SCALE 1:100)



1ST TO 4TH, 6TH TO 9TH, 11TH TO 13TH, 15TH TO 18TH, 20TH TO 22ND, 24TH TO 27TH, 29TH TO 31ST, 33RD & 34TH TYPICAL FLOOR PLAN (WING-E) (SCALE 1:100)



SECTION AT AA' (WING-E) (SCALE 1:250)

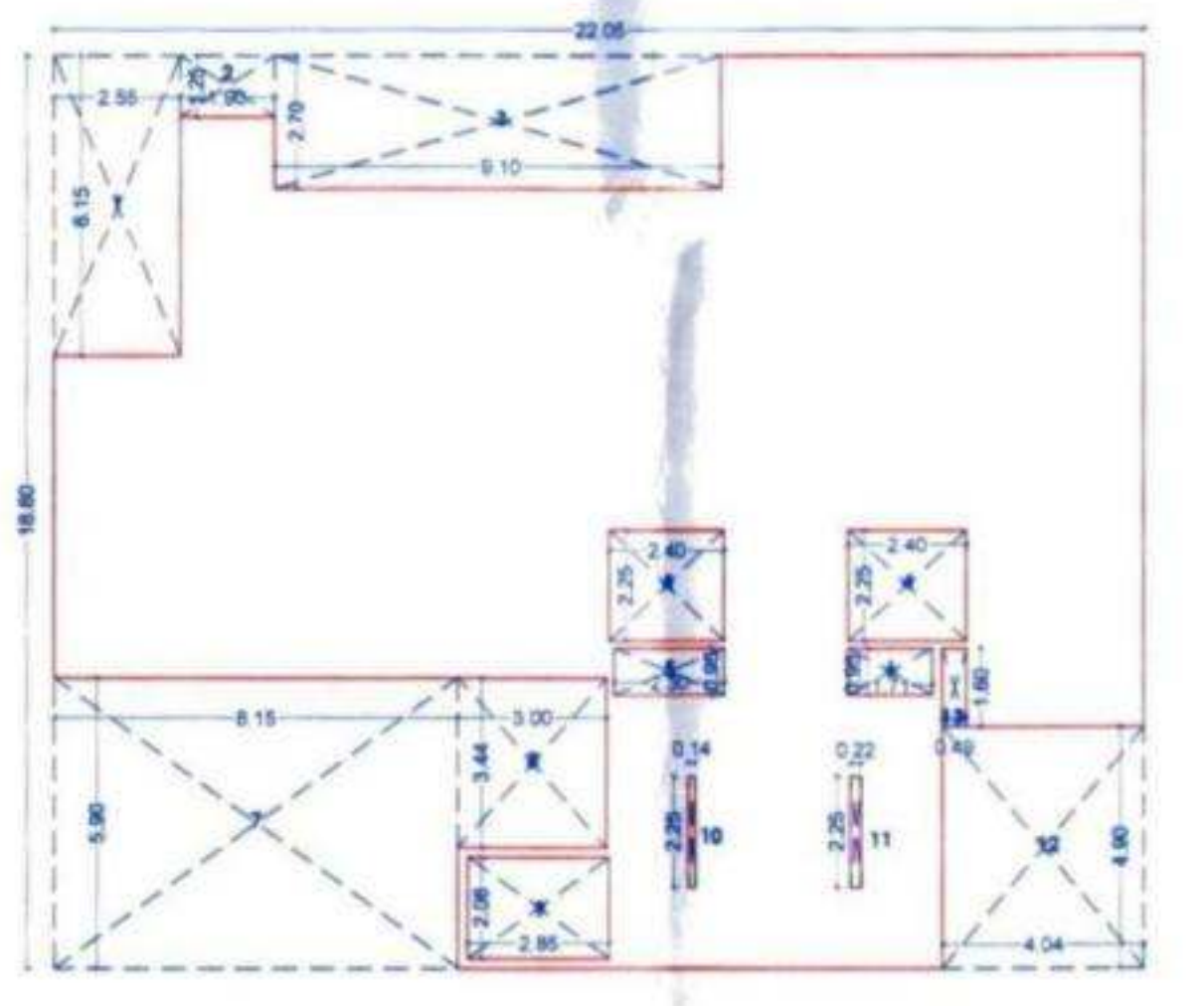


ELEVATION (WING-E) (SCALE 1:250)

PROPOSED WING - E				
WING NO.	FLOOR NAME	TOTAL BUILT-UP AREA OF FLOOR AS PER OUTER CONSTRUCTION LINE	FSI	ANCILLARY FSI
E	GROUND	9.00	5.63	3.38
	1ST	267.23	167.02	100.21
	2ND	267.23	167.02	100.21
	3RD	267.23	167.02	100.21
	4TH	267.23	167.02	100.21
	5TH (Refuge)	267.23	167.02	100.21
	6TH	267.23	167.02	100.21
	7TH	267.23	167.02	100.21
	8TH	267.23	167.02	100.21
	9TH	267.23	167.02	100.21
	10TH (Refuge)	267.23	167.02	100.21
	11TH	267.23	167.02	100.21
	12TH	267.23	167.02	100.21
	13TH	267.23	167.02	100.21
	14TH (Refuge)	267.23	167.02	100.21
	15TH	267.23	167.02	100.21
	16TH	267.23	167.02	100.21
	17TH	267.23	167.02	100.21
	18TH	267.23	167.02	100.21
	19TH (Refuge)	267.23	167.02	100.21
	20TH	267.23	167.02	100.21
	21TH	267.23	167.02	100.21
	22TH	267.23	167.02	100.21
	23TH (Refuge)	267.23	167.02	100.21
	24TH	267.23	167.02	100.21
	25TH	267.23	167.02	100.21
	26TH	267.23	167.02	100.21
	27TH	267.23	167.02	100.21
	28TH (Refuge)	267.23	167.02	100.21
	29TH	267.23	167.02	100.21
	30TH	267.23	167.02	100.21
	31TH	267.23	167.02	100.21
	32TH (Refuge)	267.23	167.02	100.21
	33RD	267.23	167.02	100.21
	34TH	267.23	167.02	100.21
35TH RECREATIONAL FLOOR (TOILET)	3.24	2.03	1.22	
TOTAL		9098.06	5686.29	3411.77

REFUGE CALCULATION			
WING E			
NO. FLAT	CARPET AREA	NO. OF FLOOR	
1	167.95	3	= 503.85
TOTAL			503.85
	503.85 / 12.5		40.31
	40.31 X 0.3		12.09
	REFUGE AREA REQUIRED		12.09
	REFUGE AREA PROPOSED		15.94

AREA DETAILS OF WING - E				
BUILDING	FLOOR NAME	FLAT NO	CARPET AREA	TOTAL CARPET AREA (SQ.M)
RESIDENTIAL	1ST TO 34TH FLOOR	E-1 TO E-34	167.95	202.09



AREA DIAGRAM TYPICAL 1ST TO 34TH FLOOR PLAN (WING - E) SCALE:1:200

AREA CALC. FOR (WING-E) TYPICAL 1ST TO 34TH FLOOR (IN SQM)			
A	=	22.05 X 18.60	= 410.13
DEDUCTIONS			
1	2.55 X 6.15 X 1 X 1	15.68	
2	1.90 X 1.25 X 1 X 1	2.38	
3	9.10 X 2.70 X 1 X 1	24.57	
4	2.40 X 2.25 X 2 X 1	10.80	
5	2.30 X 0.95 X 1 X 1	2.18	
6	1.71 X 0.95 X 1 X 1	1.62	
7	8.15 X 5.90 X 1 X 1	48.09	
8	3.00 X 3.44 X 1 X 1	10.32	
9	2.85 X 2.06 X 1 X 1	5.87	
10	0.14 X 2.25 X 1 X 1	0.32	
11	0.22 X 2.25 X 1 X 1	0.50	
12	4.04 X 4.90 X 1 X 1	19.80	
13	0.49 X 1.60 X 1 X 1	0.78	
TOTAL DEDUCTIONS			142.90
410.13	-	142.90	= 267.23
NET AREA			267.23

WING - E

STAMP OF APPROVAL 09/10

REVISED BUILDING PERMISSION OF PROPOSED RESIDENTIAL BUILDING IN S. NO.59/1/1/ B+59/1/2 +59/1/1C+59/1/3/1 AT ANANDWALI, NASHIK. FOR:- HIGHLAND BUILDERS AND DEVELOPERS PARTNERSHIP FIRM THRO. PARTNERS SHRI. PANKAJ ASHOK CHANDWANI AND OTHERS.

APPROVED
The Plans amended in
As per the conditions mentioned in the accompanying commencement Certificate No. dated 31/03/2022
A/1 BP/588/2022

Executive Engineer
TOWN PLANNING
Nashik Municipal Corporation
Nashik

SIGNATURE OF ARCHITECT SIGNATURE OF STRUCTURAL ENG. SIGNATURE OF OWNER

For Epsilon Consultants Pvt. Ltd.

ARCHITECT
SUMIT & BANSRI KUMATH

78, 7th Floor, JITO Business Bay,
Shri Hari Narayan Kute Marg,
Nashik-422002.
Email- sumitkumath@gmail.com
WEB: sumitkumath.com