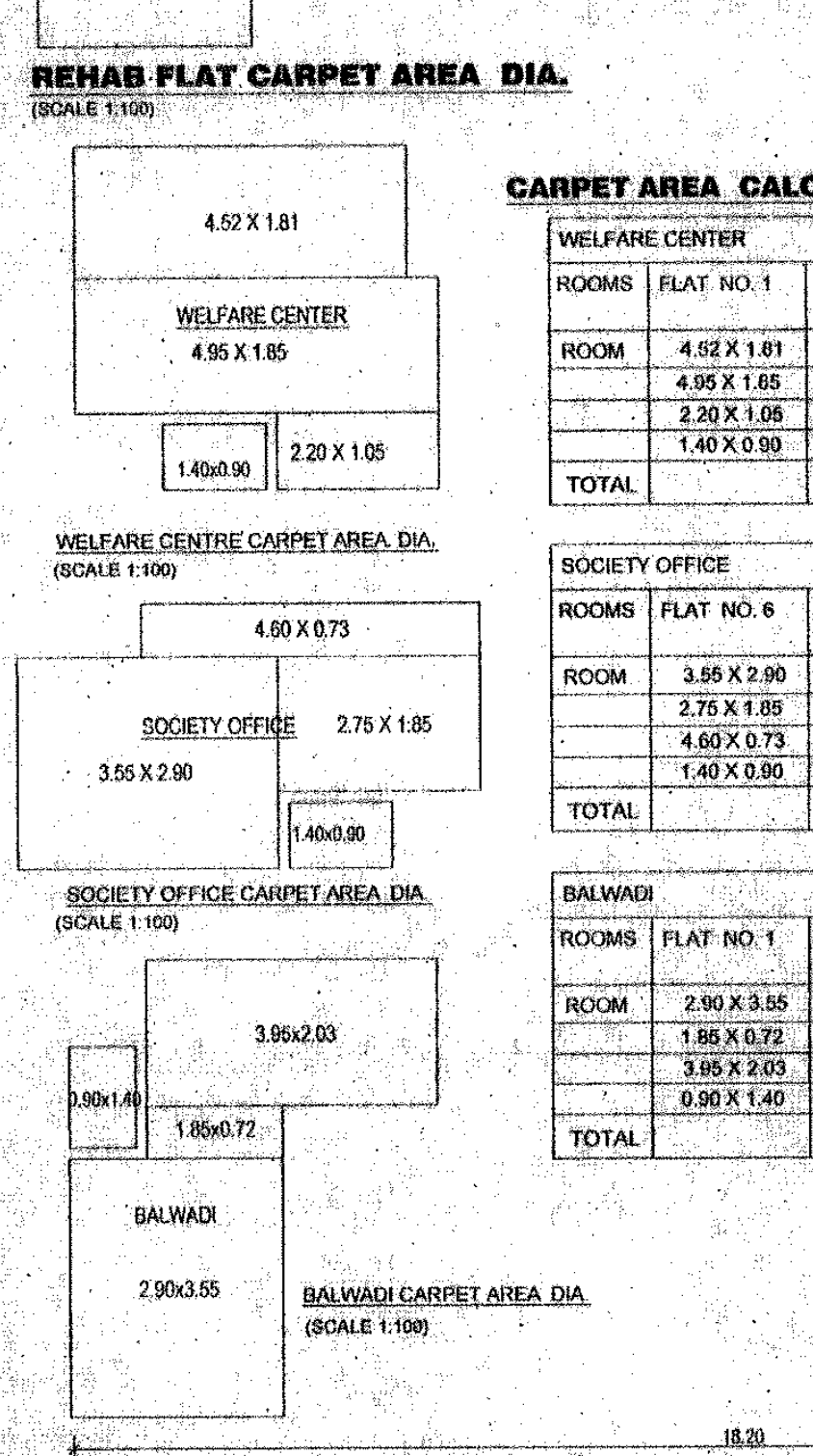


REHAB FUNCTIONAL AREA STATEMENT (REHAB WING - B)

FLOOR	ELEV. PROJ. AREA	ELECTRIC METER RM.	TOTAL SQ.MT.
1ST FL.	13.36	0.45	13.81
2ND FL.	27.35	---	27.35
3RD FL.	27.35	---	27.35
4TH FL.	47.10	---	47.10
5TH FL.	47.10	---	47.10
6TH FL.	47.10	---	47.10
7TH FL.	47.10	---	47.10
TOTAL	264.56	0.45	265.01

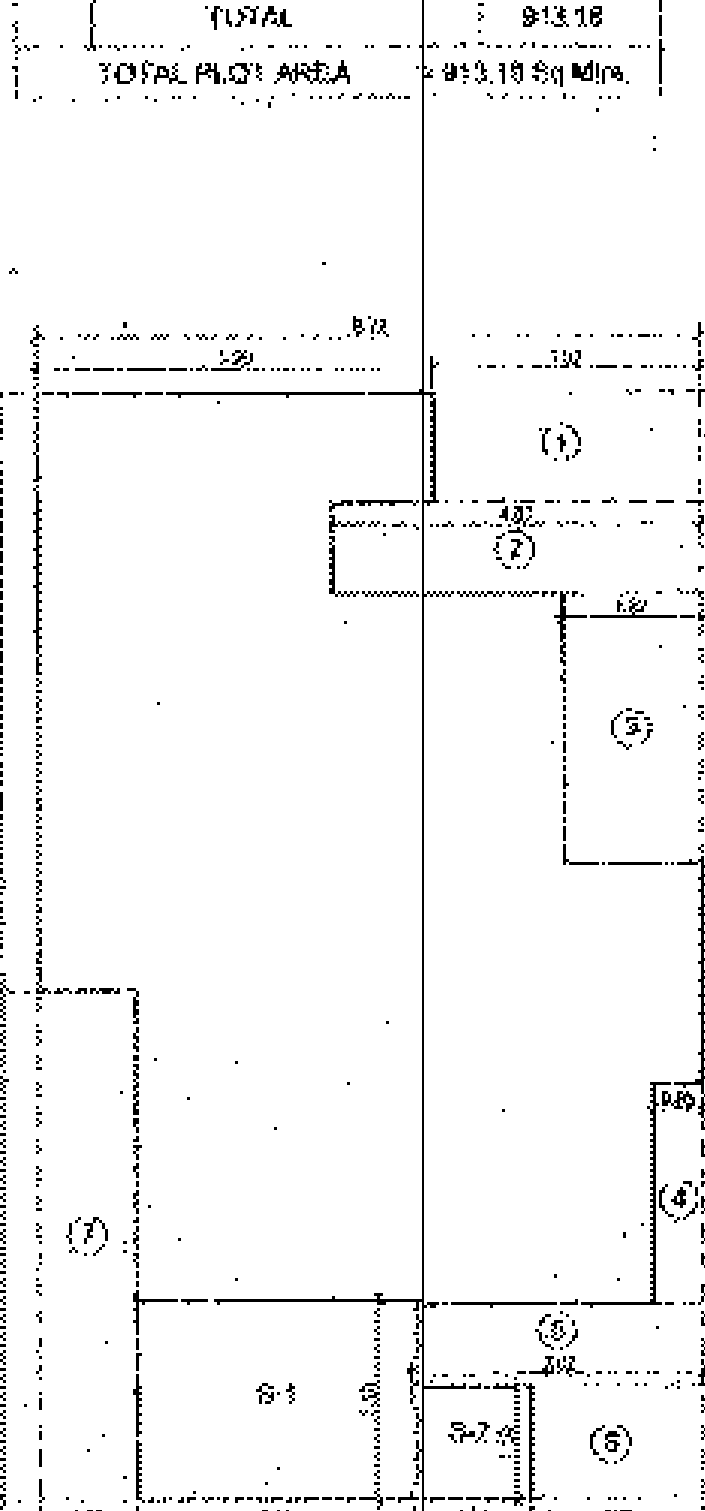
BUILT UP AREA SUMMARY (AREA in Sqmts.) FOR REHAB WING-A+B

FLOOR	GR. FLOOR BUILT UP AREA	STR. LIFT AREA	AREA OF PASSAGE	STAIR CASE	AREA OF ELEVATOR	AREA OF SOCIETY OFFICE	TOTAL REHAB COMPONENT AREA	NET AREA FOR SALE
GR.	172.76	70.57	82.54	83.50	24.75	24.00	438.12	612.00
1ST	219.2	---	---	---	---	---	219.2	177.66
2ND	219.2	---	---	---	---	---	219.2	177.66
3RD	219.2	---	---	---	---	---	219.2	177.66
4TH	219.2	---	---	---	---	---	219.2	177.66
5TH	219.2	---	---	---	---	---	219.2	177.66
6TH	219.2	---	---	---	---	---	219.2	177.66
7TH	219.2	---	---	---	---	---	219.2	177.66
TOTAL	1849.96	136.85	174.38	83.50	24.75	24.00	2497.44	3246.30



AREA CALCULATION FOR GROUND FLR. (WING-B)

No.	DIMENSION	TOTAL
1	42.71 X 17.85 X 0.50	377.55
2	42.71 X 10.73 X 0.50	228.72
3	21.12 X 3.68 X 0.50	38.97
TOTAL		645.24

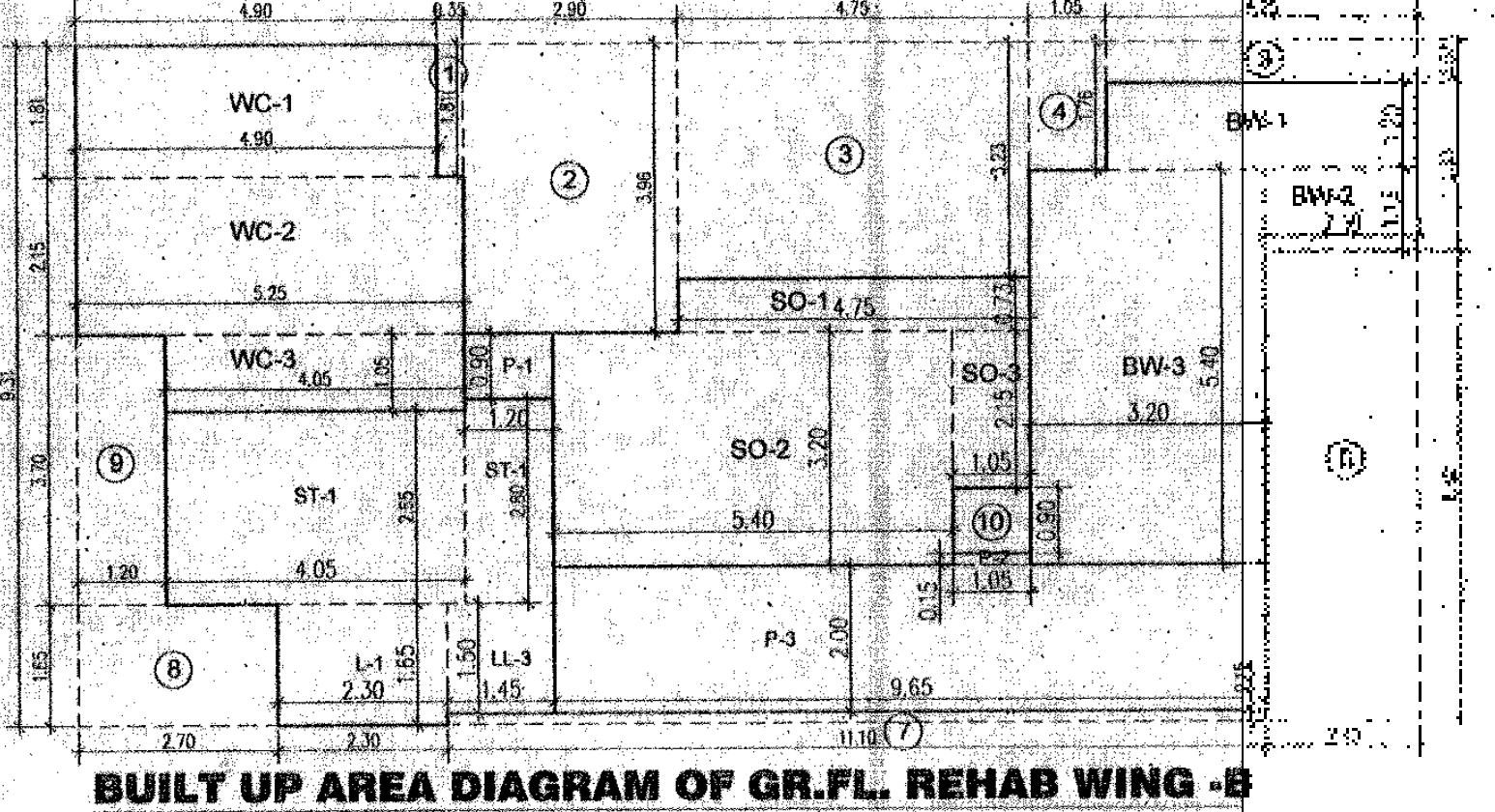


SHOP AREA CALCULATIONS

SHOP NO.	AREA
01	15.10
02	15.10
03	15.10
04	15.10
05	15.10
06	15.10
07	15.10
08	15.10
09	15.10
10	15.10
11	15.10
12	15.10
13	15.10
14	15.10
15	15.10
16	15.10
17	15.10
18	15.10
19	15.10
20	15.10
21	15.10
22	15.10
23	15.10
24	15.10
25	15.10
26	15.10
27	15.10
28	15.10
29	15.10
30	15.10
31	15.10
32	15.10
33	15.10
34	15.10
35	15.10
36	15.10
37	15.10
38	15.10
39	15.10
40	15.10
41	15.10
42	15.10
43	15.10
44	15.10
45	15.10
46	15.10
47	15.10
48	15.10
49	15.10
50	15.10
51	15.10
52	15.10
53	15.10
54	15.10
55	15.10
56	15.10
57	15.10
58	15.10
59	15.10
60	15.10
61	15.10
62	15.10
63	15.10
64	15.10
65	15.10
66	15.10
67	15.10
68	15.10
69	15.10
70	15.10
71	15.10
72	15.10
73	15.10
74	15.10
75	15.10
76	15.10
77	15.10
78	15.10
79	15.10
80	15.10
81	15.10
82	15.10
83	15.10
84	15.10
85	15.10
86	15.10
87	15.10
88	15.10
89	15.10
90	15.10
91	15.10
92	15.10
93	15.10
94	15.10
95	15.10
96	15.10
97	15.10
98	15.10
99	15.10
100	15.10

STATEMENT FOR SALE FUNGIBLE (WING-A)

FLOOR	GR. FLOOR BUILT UP AREA	STR. LIFT AREA	AREA OF PASSAGE	STAIR CASE	AREA OF ELEVATOR	AREA OF SOCIETY OFFICE	TOTAL REHAB COMPONENT AREA	NET AREA FOR SALE
GR.	172.76	70.57	82.54	83.50	24.75	24.00	438.12	612.00
1ST	219.2	---	---	---	---	---	219.2	177.66
2ND	219.2	---	---	---	---	---	219.2	177.66
3RD	219.2	---	---	---	---	---	219.2	177.66
4TH	219.2	---	---	---	---	---	219.2	177.66
5TH	219.2	---	---	---	---	---	219.2	177.66
6TH	219.2	---	---	---	---	---	219.2	177.66
7TH	219.2	---	---	---	---	---	219.2	177.66
TOTAL	1849.96	136.85	174.38	83.50	24.75	24.00	2497.44	3246.30



BUILT UP AREA DIAGRAM OF GR. FL. WING - A (REHAB + SALE SHOP)

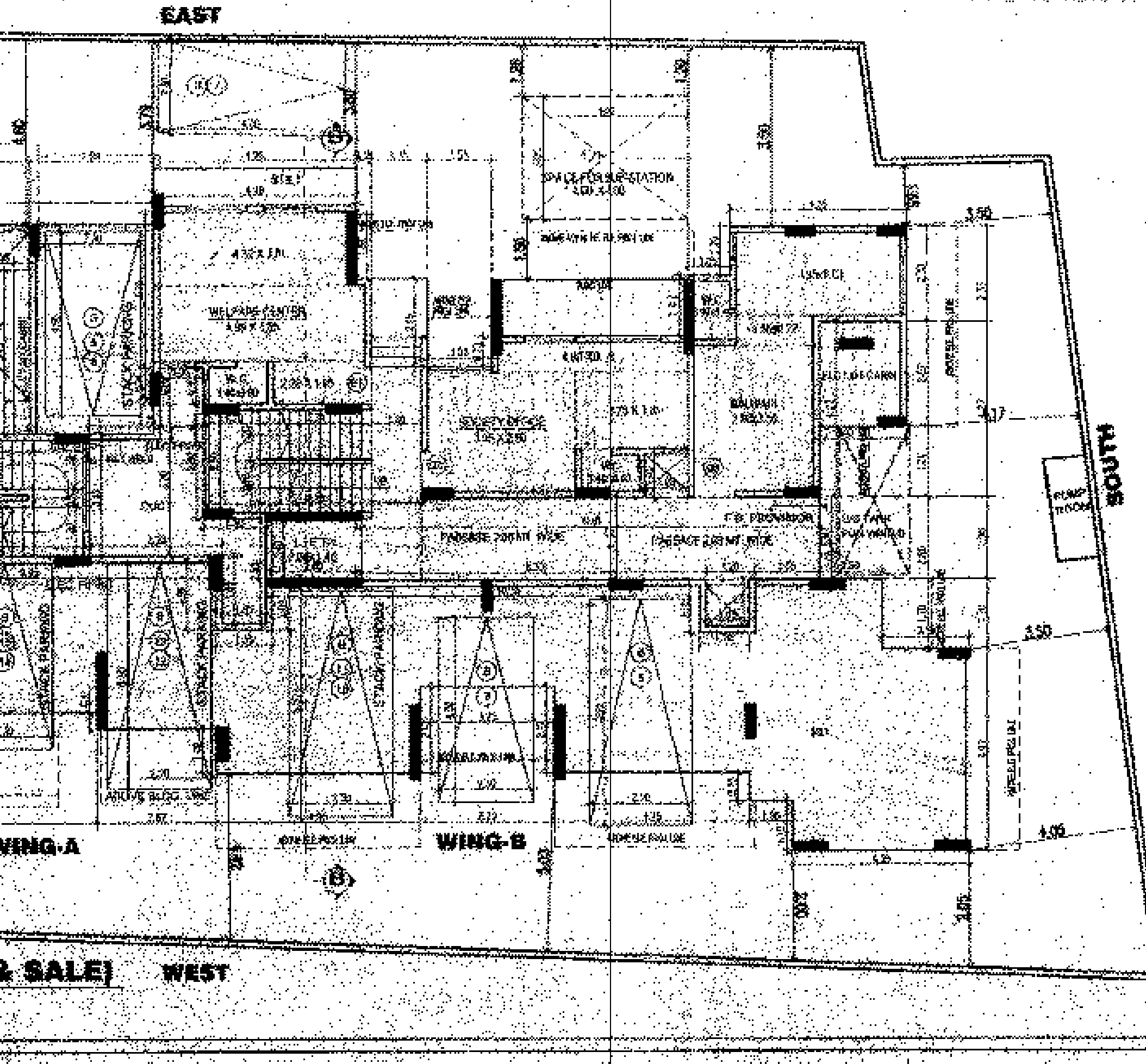
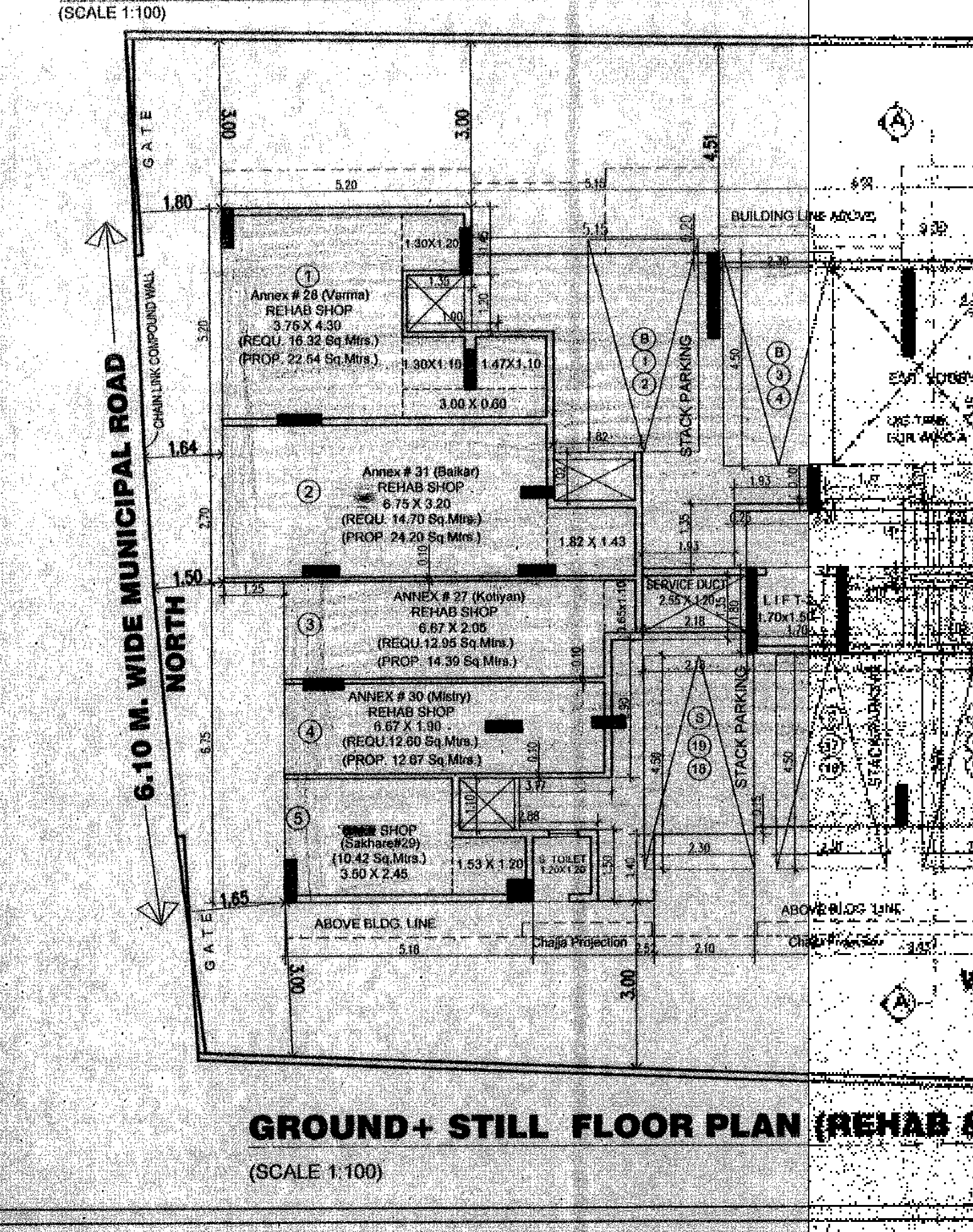
NO.	DIMENSION	TOTAL
1	42.71 X 17.85 X 0.50	377.55
2	42.71 X 10.73 X 0.50	228.72
3	21.12 X 3.68 X 0.50	38.97
TOTAL		645.24

REHAB SHOP AREA STATEMENT

NO.	DIMENSION	TOTAL
1	42.71 X 17.85 X 0.50	377.55
2	42.71 X 10.73 X 0.50	228.72
3	21.12 X 3.68 X 0.50	38.97
TOTAL		645.24

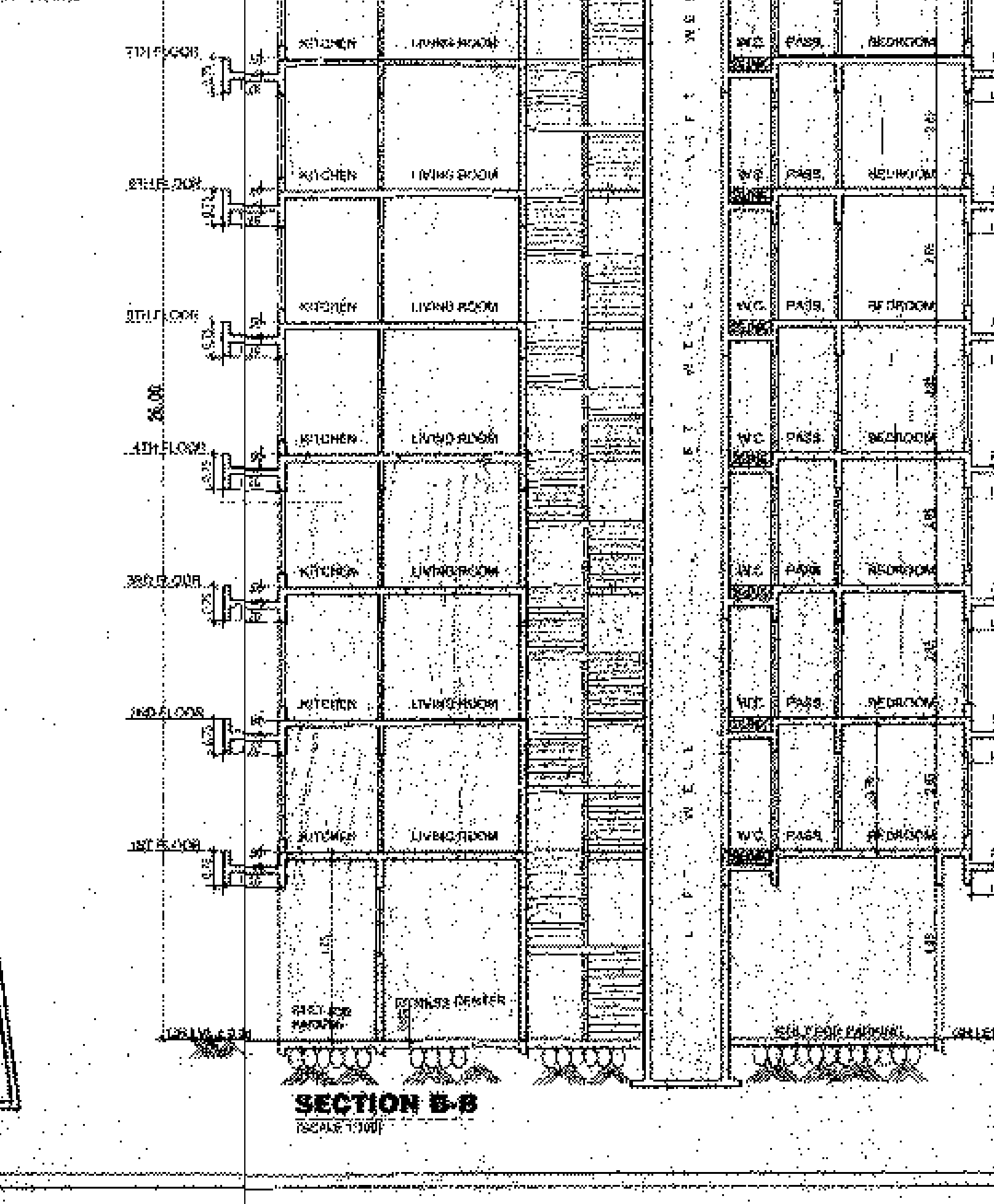
FLOOR WISE TENEMENT STATEMENT COMPOSITE BLDG. WING A + B

FLOOR	SET OF REHAB TENEMENT RESIDENTIAL COMMERCIAL	REHAB	PAV.	WALKWAY	WELFARE CENTER	SOCIETY OFFICE	TOTAL	SALE
GR.	172.76	70.57	82.54	83.50	24.75	24.00	438.12	612.00
1ST	219.2	---	---	---	---	---	219.2	177.66
2ND	219.2	---	---	---	---	---	219.2	177.66
3RD	219.2	---	---	---	---	---	219.2	177.66
4TH	219.2	---	---	---	---	---	219.2	177.66
5TH	219.2	---	---	---	---	---	219.2	177.66
6TH	219.2	---	---	---	---	---	219.2	177.66
7TH	219.2	---	---	---	---	---	219.2	177.66
TOTAL	1849.96	136.85	174.38	83.50	24.75	24.00	2497.44	3246.30



FUNCTIONAL AREA CAL. (REHAB WING - B)

FLOOR	GR. FLOOR BUILT UP AREA	STR. LIFT AREA	AREA OF PASSAGE	STAIR CASE	AREA OF ELEVATOR	AREA OF SOCIETY OFFICE	TOTAL REHAB COMPONENT AREA	NET AREA FOR SALE
GR.	172.76	70.57	82.54	83.50	24.75	24.00	438.12	612.00
1ST	219.2	---	---	---	---	---	219.2	177.66
2ND	219.2	---	---	---	---	---	219.2	177.66
3RD	219.2	---	---	---	---	---	219.2	177.66
4TH	219.2	---	---	---	---	---	219.2	177.66
5TH	219.2	---	---	---	---	---	219.2	177.66
6TH	219.2	---	---	---	---	---	219.2	177.66
7TH	219.2	---	---	---	---	---	219.2	177.66
TOTAL	1849.96	136.85	174.38	83.50	24.75	24.00	2497.44	3246.30

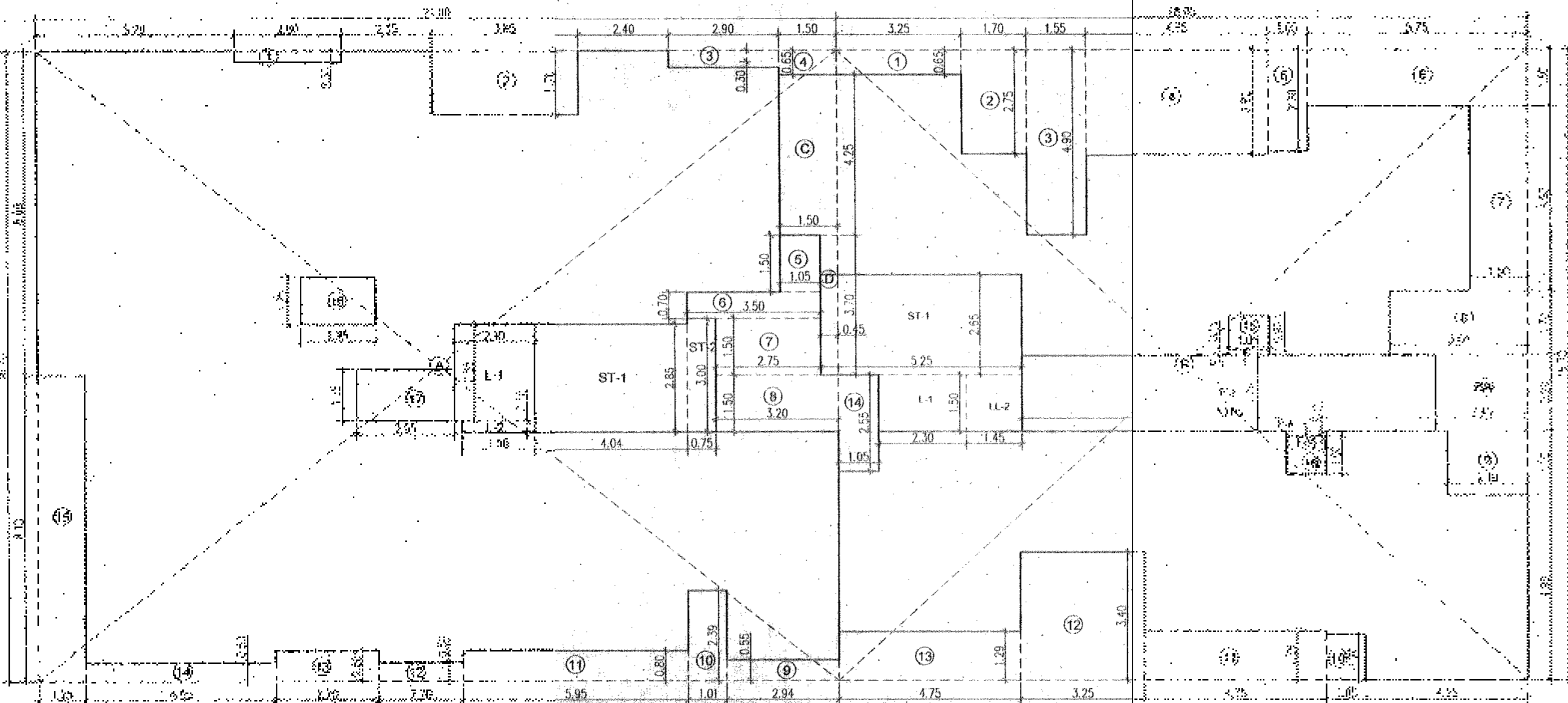


PROFORMA 'A'

NO.	DESCRIPTION	AREA (SQ.MT.)
1	AREA OF PLOT AS PER REGD. CONVEYANCE DEED	914.14
2	AREA OF PLOT AS PER PROPERTY REGD. CARDS	914.14
3	DEDUCTIONS FOR	---
4	AREA KEPT OPEN AS PROVISION OF 6.00M ROAD WIDTH	---
5	PROPOSED ROAD	---
6	ANY RESERVATIONS	---
7	TOTAL (A+B+C)	---
8	BALANCE AREA OF PLOT (E-D)	914.14
9	DEDUCTION FOR PH. L.C.	---
10	NET AREA OF PLOT (E-F)	914.14
11	ADDITIONS FOR F.S.	---
12	NET BACK 100%	---
13	IN RESERVATION	---
14	TOTAL AREA (G+H)	914.14
15	F.S. I. PERMISSIBLE	3.00
16	F.S. I. CREDIT AVAILABLE BY D.R.C.	---
17	PERMISSIBLE FLOOR AREA	2730.24
18	EXISTING FLOOR AREA	---
19	PROPOSED NET GUILT OF AREA (REHAB SHOP AREA)	1248.30
20	TOTAL BUILT UP AREA PROPOSED (12+19)	3730.40
21	F.S. I. CONSIDERED	2.998

DETAILS OF FSI AVAILABLE AS PER DCR 35(A)

NO.	DESCRIPTION	AREA (SQ.MT.)
1	Complete DCR in case of residential purposes vide DCR 35(A) for purely residential purposes	1248.30
2	Partial DCR in case of residential purposes vide DCR 35(A) for purely residential purposes	---
3	Partial DCR in case of residential purposes vide DCR 35(A) for purely residential purposes	---
4	Partial DCR in case of residential purposes vide DCR 35(A) for purely residential purposes	---
5	Partial DCR in case of residential purposes vide DCR 35(A) for purely residential purposes	---
6	Partial DCR in case of residential purposes vide DCR 35(A) for purely residential purposes	---
7	Partial DCR in case of residential purposes vide DCR 35(A) for purely residential purposes	---
8	Partial DCR in case of residential purposes vide DCR 35(A) for purely residential purposes	---
9	Partial DCR in case of residential purposes vide DCR 35(A) for purely residential purposes	---
10	Partial DCR in case of residential purposes vide DCR 35(A) for purely residential purposes	---
11	Partial DCR in case of residential purposes vide DCR 35(A) for purely residential purposes	---
12	Partial DCR in case of residential purposes vide DCR 35(A) for purely residential purposes	---
13	Partial DCR in case of residential purposes vide DCR 35(A) for purely residential purposes	---
14	Partial DCR in case of residential purposes vide DCR 35(A) for purely residential purposes	---
15	Partial DCR in case of residential purposes vide DCR 35(A) for purely residential purposes	---
16	Partial DCR in case of residential purposes vide DCR 35(A) for purely residential purposes	---
17	Partial DCR in case of residential purposes vide DCR 35(A) for purely residential purposes	---
18	Partial DCR in case of residential purposes vide DCR 35(A) for purely residential purposes	---
19	Partial DCR in case of residential purposes vide DCR 35(A) for purely residential purposes	---
20	Partial DCR in case of residential purposes vide DCR 35(A) for purely residential purposes	---
21	Partial DCR in case of residential purposes vide DCR 35(A) for purely residential purposes	---
22	Partial DCR in case of residential purposes vide DCR 35(A) for purely residential purposes	---
23	Partial DCR in case of residential purposes vide DCR 35(A) for purely residential purposes	---
24	Partial DCR in case of residential purposes vide DCR 35(A) for purely residential purposes	---
25	Partial DCR in case of residential purposes vide DCR 35(A) for purely residential purposes	---
26	Partial DCR in case of residential purposes vide DCR 35(A) for purely residential purposes	---
27	Partial DCR in case of residential purposes vide DCR 35(A) for purely residential purposes	---
28	Partial DCR in case of residential purposes vide DCR 35(A) for purely residential purposes	---
29	Partial DCR in case of residential purposes vide DCR 35(A) for purely residential purposes	---
30	Partial DCR in case of residential purposes vide DCR 35(A) for purely residential purposes	---
31	Partial DCR in case of residential purposes vide DCR 35(A) for purely residential purposes	---
32	Partial DCR in case of residential purposes vide DCR 35(A) for purely residential purposes	---
33	Partial DCR in case of residential purposes vide DCR 35(A) for purely residential purposes	---
34	Partial DCR in case of residential purposes vide DCR 35(A) for purely residential purposes	---
35	Partial DCR in case of residential purposes vide DCR 35(A) for purely residential purposes	---
36	Partial DCR in case of residential purposes vide DCR 35(A) for purely residential purposes	---
37	Partial DCR in case of residential purposes vide DCR 35(A) for purely residential purposes	---
38	Partial DCR in case of residential purposes vide DCR 35(A) for purely residential purposes	---
39	Partial DCR in case of residential purposes vide DCR 35(A) for purely residential purposes	---
40	Partial DCR in case of residential purposes vide DCR 35(A) for purely residential purposes	---
41	Partial DCR in case of residential purposes vide DCR 35(A) for purely residential purposes	---
42	Partial DCR in case of residential purposes vide DCR 35(A) for purely residential purposes	---
43	Partial DCR in case of residential purposes vide DCR 35(A) for purely residential purposes	---
44	Partial DCR in case of residential purposes vide DCR 35(A) for purely residential purposes	---
45	Partial DCR in case of residential purposes vide DCR 35(A) for purely residential purposes	---
46	Partial DCR in case of residential purposes vide DCR 35(A) for purely residential purposes	---
47	Partial DCR in case of residential purposes vide DCR 35(A) for purely residential purposes	---
48	Partial DCR in case of residential purposes vide DCR 35(A) for purely residential purposes	---
49	Partial DCR in case of residential purposes vide DCR 35(A) for purely residential purposes	---
50	Partial DCR in case of residential purposes vide DCR 35(A) for purely residential purposes	---
51	Partial DCR in case of residential purposes vide DCR 35(A) for purely residential purposes	---
52	Partial DCR in case of residential purposes vide DCR 35(A) for purely residential purposes	---
53	Partial DCR in case of residential purposes vide DCR 35(A) for purely residential purposes	---
54	Partial DCR in case of residential purposes vide DCR 35(A) for purely residential purposes	---
55	Partial DCR in case of residential purposes vide DCR 35(A) for purely residential purposes	---
56	Partial DCR in case of residential purposes vide DCR 35(A) for purely residential purposes	---
57	Partial DCR in case of residential purposes vide DCR 35(A) for purely residential purposes	---
58	Partial DCR in case of residential purposes vide DCR 35(A) for purely residential purposes	---
59	Partial DCR in case of residential purposes vide DCR 35(A) for purely residential purposes	---
60	Partial DCR in case of residential purposes vide DCR 35(A) for purely residential purposes	---
61	Partial DCR in case of residential purposes vide DCR 35(A) for purely residential purposes	---
62	Partial DCR in case of residential purposes vide DCR 35(A) for purely residential purposes	---
63	Partial DCR	

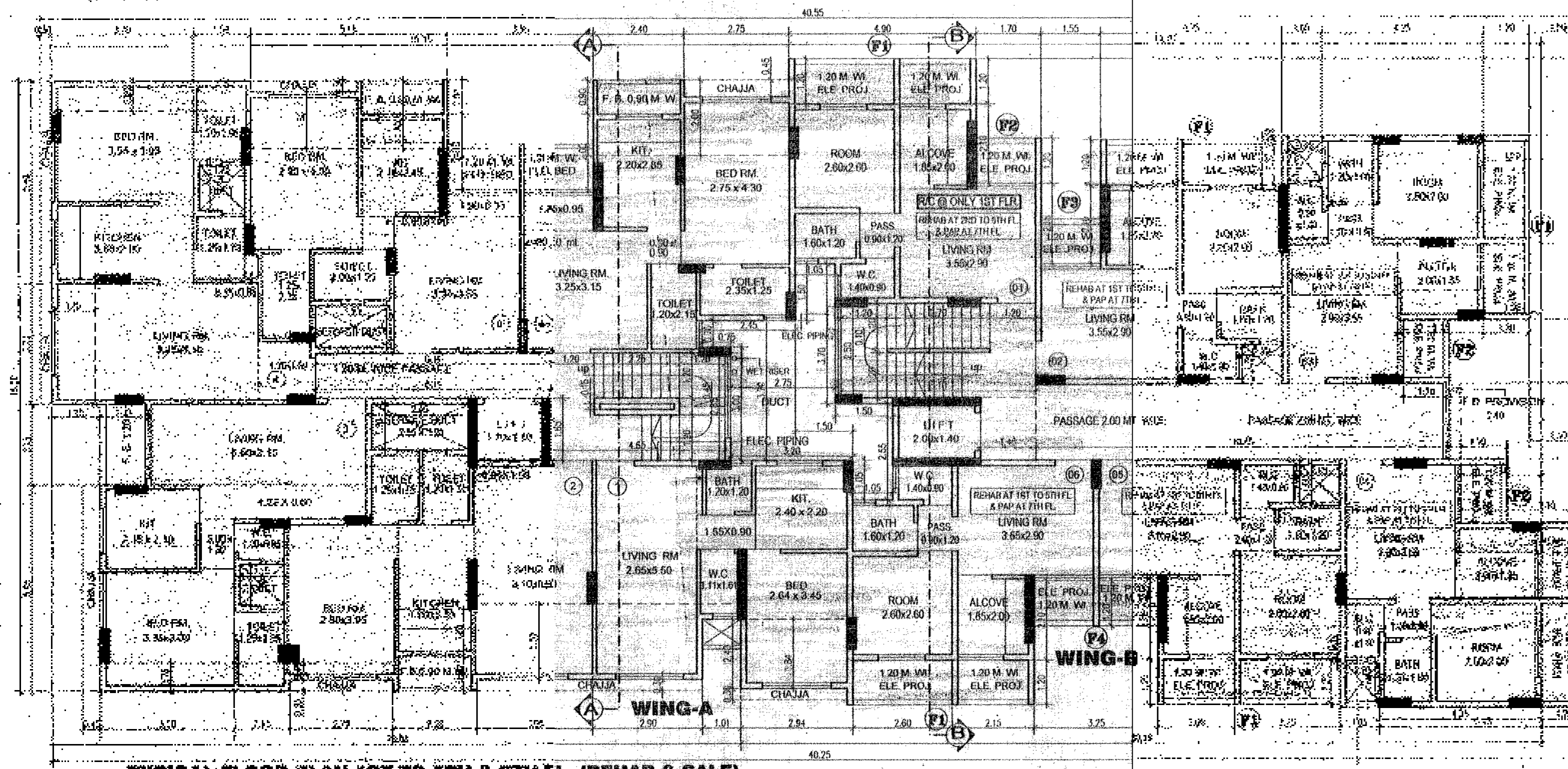
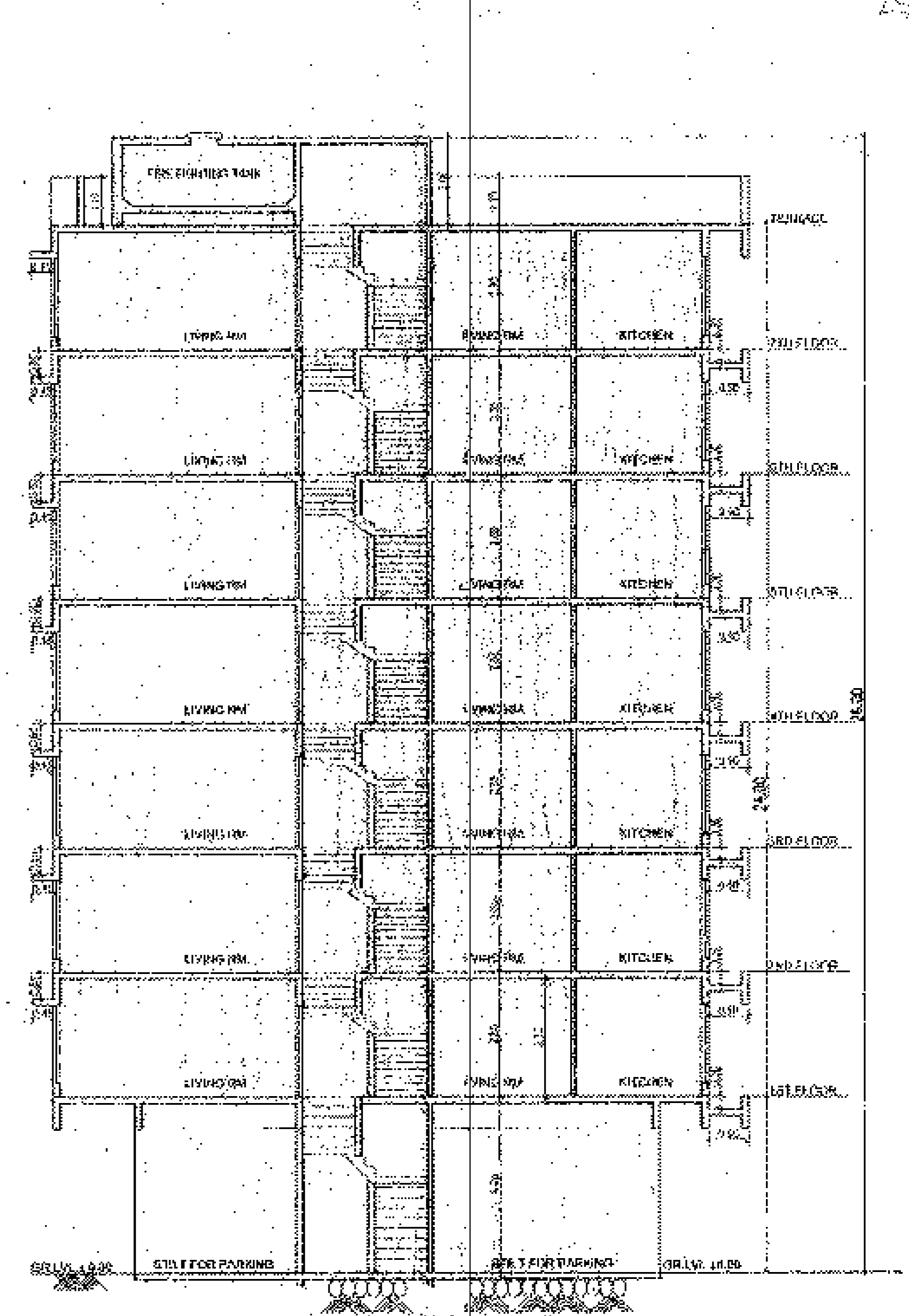


B.U. AREA CAL. FOR TY. FL. (1ST TO 5TH & 7TH FL. (SALE WING - A))

NO.	DESCRIPTION	AREA
1	2100.00	2100.00
2	200.00	200.00
3	200.00	200.00
4	200.00	200.00
5	200.00	200.00
6	200.00	200.00
7	200.00	200.00
8	200.00	200.00
9	200.00	200.00
10	200.00	200.00
11	200.00	200.00
12	200.00	200.00
13	200.00	200.00
14	200.00	200.00
15	200.00	200.00
16	200.00	200.00
17	200.00	200.00
18	200.00	200.00
19	200.00	200.00
20	200.00	200.00
21	200.00	200.00
22	200.00	200.00
23	200.00	200.00
24	200.00	200.00
25	200.00	200.00
26	200.00	200.00
27	200.00	200.00
28	200.00	200.00
29	200.00	200.00
30	200.00	200.00
31	200.00	200.00
32	200.00	200.00
33	200.00	200.00
34	200.00	200.00
35	200.00	200.00
36	200.00	200.00
37	200.00	200.00
38	200.00	200.00
39	200.00	200.00
40	200.00	200.00
41	200.00	200.00
42	200.00	200.00
43	200.00	200.00
44	200.00	200.00
45	200.00	200.00
46	200.00	200.00
47	200.00	200.00
48	200.00	200.00
49	200.00	200.00
50	200.00	200.00
51	200.00	200.00
52	200.00	200.00
53	200.00	200.00
54	200.00	200.00
55	200.00	200.00
56	200.00	200.00
57	200.00	200.00
58	200.00	200.00
59	200.00	200.00
60	200.00	200.00
61	200.00	200.00
62	200.00	200.00
63	200.00	200.00
64	200.00	200.00
65	200.00	200.00
66	200.00	200.00
67	200.00	200.00
68	200.00	200.00
69	200.00	200.00
70	200.00	200.00
71	200.00	200.00
72	200.00	200.00
73	200.00	200.00
74	200.00	200.00
75	200.00	200.00
76	200.00	200.00
77	200.00	200.00
78	200.00	200.00
79	200.00	200.00
80	200.00	200.00
81	200.00	200.00
82	200.00	200.00
83	200.00	200.00
84	200.00	200.00
85	200.00	200.00
86	200.00	200.00
87	200.00	200.00
88	200.00	200.00
89	200.00	200.00
90	200.00	200.00
91	200.00	200.00
92	200.00	200.00
93	200.00	200.00
94	200.00	200.00
95	200.00	200.00
96	200.00	200.00
97	200.00	200.00
98	200.00	200.00
99	200.00	200.00
100	200.00	200.00
101	200.00	200.00
102	200.00	200.00
103	200.00	200.00
104	200.00	200.00
105	200.00	200.00
106	200.00	200.00
107	200.00	200.00
108	200.00	200.00
109	200.00	200.00
110	200.00	200.00
111	200.00	200.00
112	200.00	200.00
113	200.00	200.00
114	200.00	200.00
115	200.00	200.00
116	200.00	200.00
117	200.00	200.00
118	200.00	200.00
119	200.00	200.00
120	200.00	200.00
121	200.00	200.00
122	200.00	200.00
123	200.00	200.00
124	200.00	200.00
125	200.00	200.00
126	200.00	200.00
127	200.00	200.00
128	200.00	200.00
129	200.00	200.00
130	200.00	200.00
131	200.00	200.00
132	200.00	200.00
133	200.00	200.00
134	200.00	200.00
135	200.00	200.00
136	200.00	200.00
137	200.00	200.00
138	200.00	200.00
139	200.00	200.00
140	200.00	200.00
141	200.00	200.00
142	200.00	200.00
143	200.00	200.00
144	200.00	200.00
145	200.00	200.00
146	200.00	200.00
147	200.00	200.00
148	200.00	200.00
149	200.00	200.00
150	200.00	200.00
151	200.00	200.00
152	200.00	200.00
153	200.00	200.00
154	200.00	200.00
155	200.00	200.00
156	200.00	200.00
157	200.00	200.00
158	200.00	200.00
159	200.00	200.00
160	200.00	200.00
161	200.00	200.00
162	200.00	200.00
163	200.00	200.00
164	200.00	200.00
165	200.00	200.00
166	200.00	200.00
167	200.00	200.00
168	200.00	200.00
169	200.00	200.00
170	200.00	200.00
171	200.00	200.00
172	200.00	200.00
173	200.00	200.00
174	200.00	200.00
175	200.00	200.00
176	200.00	200.00
177	200.00	200.00
178	200.00	200.00
179	200.00	200.00
180	200.00	200.00
181	200.00	200.00
182	200.00	200.00
183	200.00	200.00
184	200.00	200.00
185	200.00	200.00
186	200.00	200.00
187	200.00	200.00
188	200.00	200.00
189	200.00	200.00
190	200.00	200.00
191	200.00	200.00
192	200.00	200.00
193	200.00	200.00
194	200.00	200.00
195	200.00	200.00
196	200.00	200.00
197	200.00	200.00
198	200.00	200.00
199	200.00	200.00
200	200.00	200.00

B.U. AREA CAL. FOR TY. FL. (1ST TO 5TH & 7TH FL. (REHAB WING - B))

NO.	DESCRIPTION	AREA
1	200.00	200.00
2	200.00	200.00
3	200.00	200.00
4	200.00	200.00
5	200.00	200.00
6	200.00	200.00
7	200.00	200.00
8	200.00	200.00
9	200.00	200.00
10	200.00	200.00
11	200.00	200.00
12	200.00	200.00
13	200.00	200.00
14	200.00	200.00
15	200.00	200.00
16	200.00	200.00
17	200.00	200.00
18	200.00	200.00
19	200.00	200.00
20	200.00	200.00
21	200.00	200.00
22	200.00	200.00
23	200.00	200.00
24	200.00	200.00
25	200.00	200.00
26	200.00	200.00
27	200.00	200.00
28	200.00	200.00
29	200.00	200.00
30	200.00	200.00
31	200.00	200.00
32	200.00	200.00
33	200.00	200.00
34	200.00	200.00
35	200.00	200.00
36	200.00	200.00
37	200.00	200.00
38	200.00	200.00
39	200.00	200.00
40	200.00	200.00
41	200.00	200.00
42	200.00	200.00
43	200.00	200.00
44	200.00	200.00
45	200.00	200.00
46	200.00	200.00
47	200.00	200.00
48	200.00	200.00
49	200.00	200.00
50	200.00	200.00
51	200.00	200.00
52	200.00	200.00
53	200.00	200.00
54	200.00	200.00
55	200.00	200.00
56	200.00	200.00
57	200.00	200.00
58	200.00	200.00
59	200.00	200.00
60	200.00	200.00
61	200.00	200.00
62	200.00	200.00
63	200.00	200.00
64	200.00	200.00
65	200.00	200.00
66	200.00	200.00
67	200.00	200.00
68	200.00	200.00
69	200.00	200.00
70	200.00	200.00
71	200.00	200.00
72	200.00	200.00
73	200.00	200.00
74	200.00	200.00
75	200.00	200.00
76	200.00	200.00
77	200.00	200.00
78	200.00	200.00
79	200.00	200.00
80	200.00	200.00
81	200.00	200.00
82	200.00	200.00
83	200.00	200.00
84	200.00	200.00
85	200.00	200.00
86	200.00	200.00
87	200.00	200.00
88	200.00	200.00
89	200.00	200.00
90	200.00	200.00
91	200.00	200.00
92	200.00	200.00
93	200.00	200.00
94	200.00	200.00
95	200.00	200.00
96	200.00	200.00
97	200.00	200.00
98	200.00	200.00
99	200.00	200.00
100	200.00	200.00



SALE CARPET AREA STATEMENT WING-A

ROOM NO.	ROOM NAME	AREA
1	Living	100.00
2	Bedroom	80.00
3	Kitchen	60.00
4	Bathroom	40.00
5	Room	30.00
6	Room	30.00
7	Room	30.00
8	Room	30.00
9	Room	30.00
10	Room	30.00
11	Room	30.00
12	Room	30.00
13	Room	30.00
14	Room	30.00
15	Room	30.00
16	Room	30.00
17	Room	30.00
18	Room	30.00
19	Room	30.00
20	Room	30.00
21	Room	30.00
22	Room	30.00
23	Room	30.00
24	Room	30.00
25	Room	30.00
26	Room	30.00
27	Room	30.00
28	Room	30.00
29	Room	30.00
30	Room	30.00
31	Room	30.00
32	Room	30.00
33	Room	30.00
34	Room	30.00
35	Room	30.00
36	Room	30.00
37	Room	30.00
38	Room	30.00
39	Room	30.00
40	Room	30.00
41	Room	30.00
42	Room	30.00
43	Room	30.00
44	Room	30.00
45	Room	30.00
46	Room	30.00
47	Room	30.00
48	Room	30.00