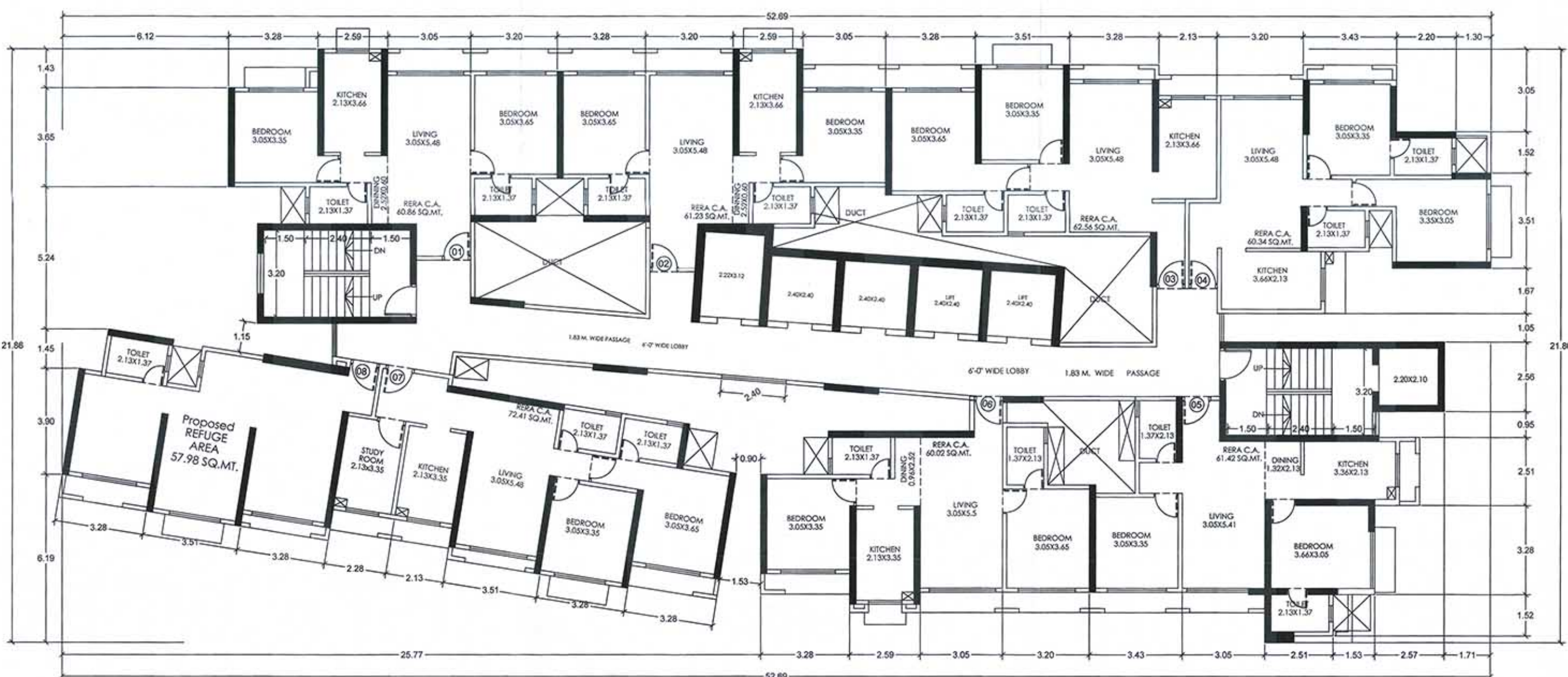


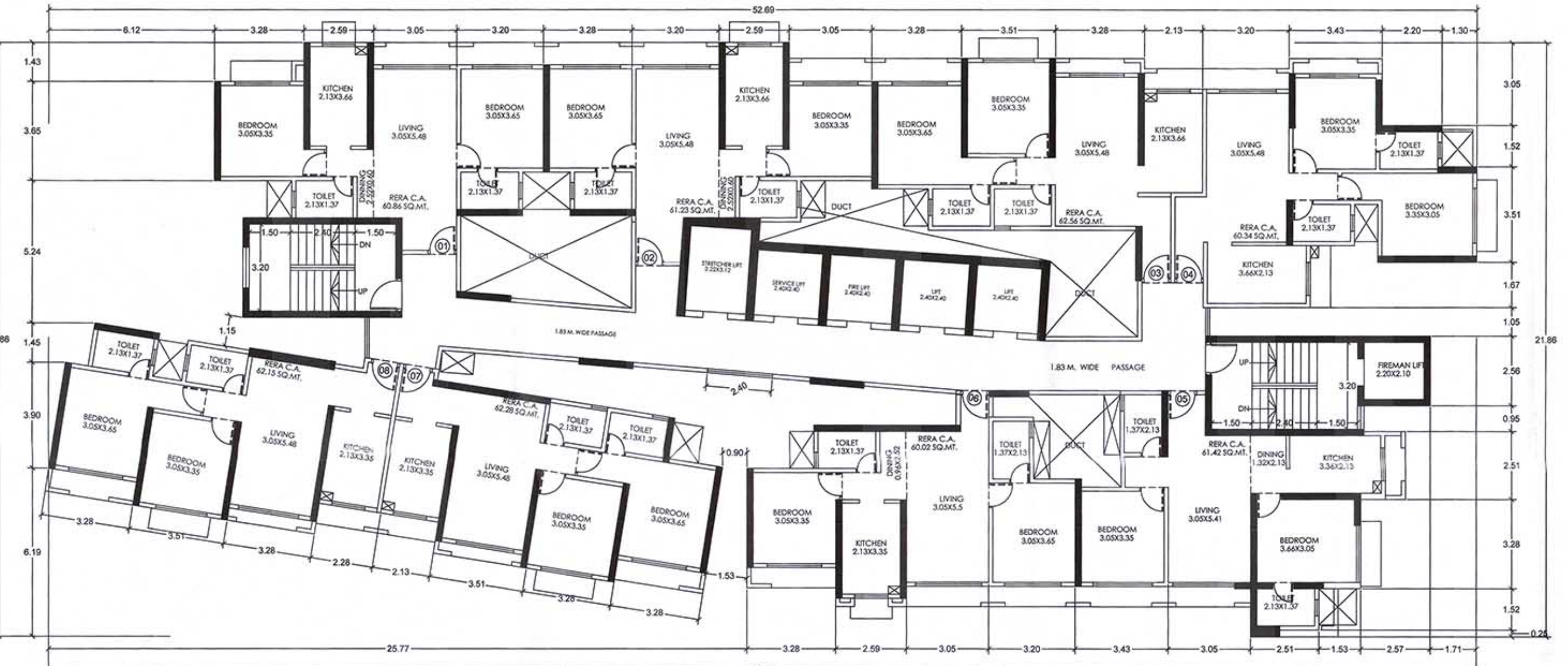
अनुमोदित नक्शा नं. ५०६/२०२२-२३
म. ३६५१३२१-१... मधील अडी शर्ती
व्यवसायिक वास्तु/स्थायीत बांधकाम
रकसे (आयन चारखर) मध्ये

म. अजयक चौ. योगी मंडळ

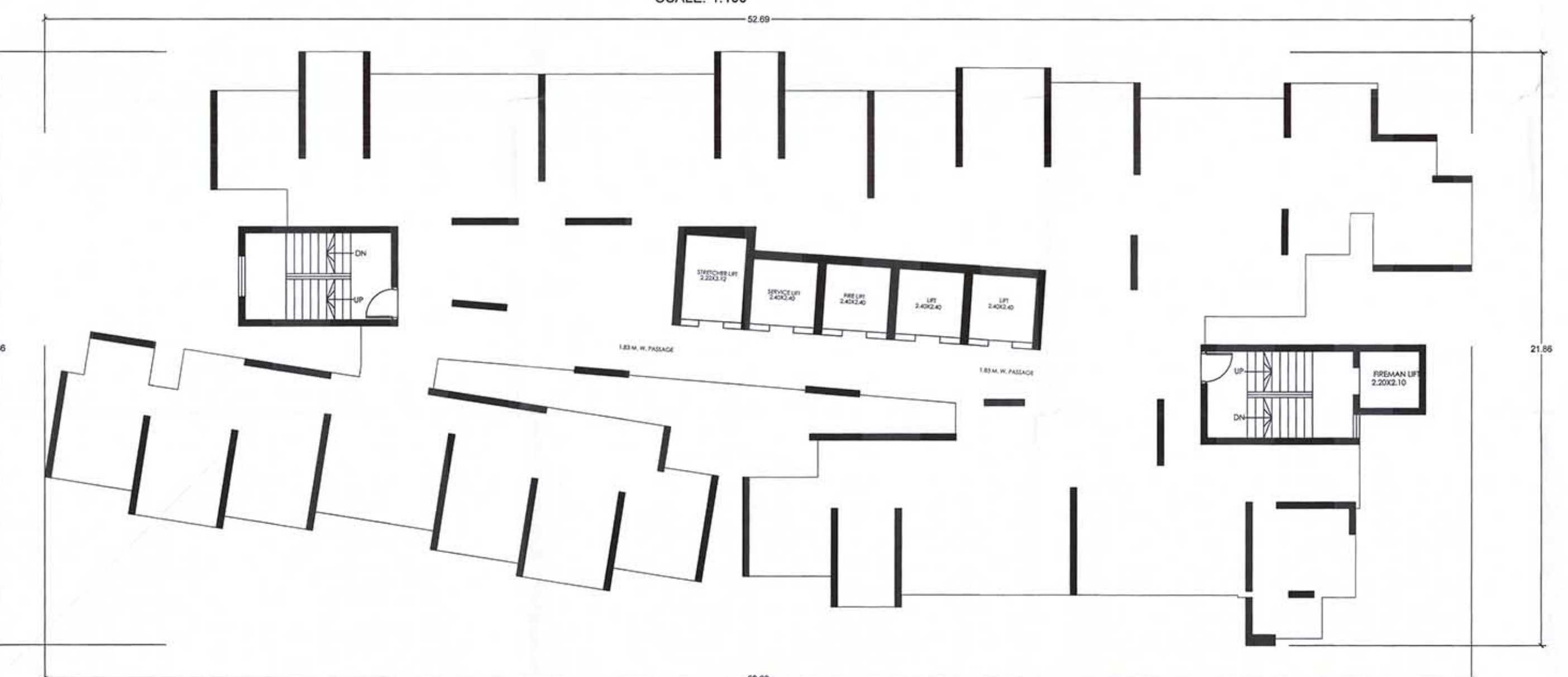
सहायक सहायक नगरपालिका
शिव - पाईर बांधकामलक्षण



REFUGE FLOOR PLAN (TOWER-4)
4TH, 9TH, 14TH, 19TH, 24TH, 29TH & 34TH FLOOR
SCALE:-1:100



TYPICAL FLOOR PLAN (TOWER-4)
1ST TO 3RD, 5TH TO 8TH, 10TH TO 13TH, 15TH TO 18TH,
20TH TO 23TH, 25TH TO 28TH, 30TH TO 33TH & 35TH FLOOR
SCALE:-1:100



STILT PARKING (GROUND FLOOR PLAN)
TOWER-4
SCALE:-1:100

BUILT UP AREA CALCULATION
FOR REFUGE FLOOR (TOWER - 4)
4TH, 9TH, 14TH, 19TH, 24TH,
29TH & 34TH FLOOR

A	1	52.69 X 21.86	1151.80
1	1	7.18 X 3.66	26.28
2	1	8.96 X 1.37	12.28
3	1	6.12 X 5.09	31.15
4	1	3.28 X 1.44	4.72
5	1	12.73 X 0.83	10.57
6	1	1.77 X 1.60	2.83
7	1	6.33 X 2.79	17.66
8	1	0.5 X 1.87 X 0.16	0.15
9	1	0.5 X 4.49 X 0.24	0.54
10	1	0.5 X 1.71 X 0.63	0.54
11	1	2.22 X 3.12	6.93
12	1	0.5 X 1.71 X 0.75	0.64
13	1	0.5 X 3.51 X 1.75	3.07
14	1	0.5 X 3.51 X 1.88	3.30
15	4	2.40 X 2.40	23.04
16	1	0.5 X 3.04 X 1.52	2.31
17	1	0.5 X 3.04 X 1.61	2.45
18	1	0.5 X 4.68 X 0.83	1.94
19	1	0.5 X 4.68 X 1.11	2.60
20	1	0.5 X 3.70 X 1.54	2.85
21	1	0.5 X 3.70 X 1.60	2.96
22	1	0.5 X 4.00 X 1.70	3.40
23	1	0.5 X 4.00 X 1.77	3.54
24	1	6.33 X 1.44	9.12
25	1	3.51 X 0.59	2.07
26	1	3.28 X 1.13	3.71
27	1	5.33 X 1.71	9.11
28	1	3.35 X 1.14	3.82
29	1	2.28 X 1.37	3.12
30	1	2.20 X 1.68	3.70
31	1	1.30 X 4.57	5.94
32	1	1.63 X 2.28	3.72
33	1	0.85 X 3.80	3.23
34	1	3.65 X 1.67	6.10
35	1	9.85 X 1.05	10.34
36	1	1.71 X 2.56	4.38
37	1	2.20 X 2.10	4.62
38	1	4.14 X 0.95	3.93
39	1	3.37 X 2.51	8.46
40	1	4.28 X 3.28	14.04
41	1	5.81 X 1.77	10.28
42	1	1.43 X 0.25	0.36
43	1	12.73 X 1.77	22.53
44	1	1.45 X 3.41	4.94
45	1	1.76 X 2.28	4.01
46	1	1.93 X 0.83	1.60
47	1	1.35 X 0.75	1.01
48	1	0.5 X 3.64 X 1.07	1.95
49	1	0.5 X 3.39 X 0.08	0.14
50	1	0.5 X 5.22 X 1.36	3.55
51	1	0.5 X 2.28 X 1.32	1.50
52	1	0.5 X 2.34 X 0.08	0.09
53	1	0.5 X 2.34 X 1.04	2.03
54	1	0.5 X 3.90 X 1.25	2.00
55	1	0.5 X 3.90 X 2.03	3.96
56	1	0.5 X 3.90 X 1.04	2.03
57	1	0.5 X 2.96 X 1.35	2.00
58	1	0.5 X 2.47 X 1.23	1.52
59	1	0.5 X 2.47 X 1.23	1.52
60	1	0.5 X 2.45 X 1.27	1.56
61	1	0.5 X 2.45 X 1.15	1.41
62	1	0.5 X 5.28 X 1.46	3.85
63	1	0.5 X 5.28 X 1.07	2.82
64	1	0.5 X 3.42 X 0.94	1.61
65	1	0.5 X 3.42 X 1.44	2.46
66	1	0.5 X 3.71 X 0.61	1.13
67	1	0.5 X 3.71 X 1.14	2.11
68	1	0.5 X 3.95 X 1.39	2.75
69	1	0.5 X 3.95 X 1.82	3.59
70	1	0.5 X 5.68 X 2.24	6.36
71	1	0.5 X 5.68 X 2.78	7.90
72	1	0.5 X 4.74 X 2.01	4.76
73	1	0.5 X 4.74 X 2.37	5.62
74	1	0.5 X 4.97 X 2.09	5.19
75	1	0.5 X 4.97 X 2.49	6.19
76	1	0.5 X 5.40 X 2.04	5.51
77	1	0.5 X 5.40 X 2.90	7.83
78	1	0.5 X 5.63 X 0.88	2.48
79	1	0.5 X 5.63 X 0.79	2.11
80	1	0.5 X 1.81 X 0.79	0.71
81	1	0.5 X 1.81 X 0.75	0.68
82	1	0.5 X 1.08 X 0.21	1.13
83	1	0.5 X 9.98 X 0.43	2.15
84	1	0.5 X 1.93 X 0.90	0.87
85	1	0.5 X 1.93 X 0.85	0.82
86	1	0.5 X 7.60 X 0.33	1.25
87	1	0.5 X 6.58 X 0.57	1.88
88	1	0.5 X 2.28 X 0.08	0.09
89	1	0.5 X 4.40 X 1.30	2.86
90	1	0.5 X 1.13 X 0.07	0.04
91	1	0.5 X 1.13 X 0.21	0.21
92	1	0.5 X 3.71 X 0.51	1.13
93	1	0.5 X 3.71 X 1.14	2.11
94	1	0.5 X 3.95 X 1.39	2.75
95	1	0.5 X 3.95 X 1.82	3.59
96	1	0.5 X 5.68 X 2.24	6.36
97	1	0.5 X 5.68 X 2.78	7.90
98	1	0.5 X 4.74 X 2.01	4.76
99	1	0.5 X 4.74 X 2.37	5.62
100	1	0.5 X 4.97 X 2.09	5.19
101	1	0.5 X 4.97 X 2.49	6.19
102	1	0.5 X 5.40 X 2.04	5.51
103	1	0.5 X 5.40 X 2.90	7.83
104	1	0.5 X 5.63 X 0.88	2.48
105	1	0.5 X 5.63 X 0.79	2.11
106	1	0.5 X 1.81 X 0.79	0.71
107	1	0.5 X 1.81 X 0.75	0.68
108	1	0.5 X 1.08 X 0.21	1.13
109	1	0.5 X 9.98 X 0.43	2.15
110	1	0.5 X 1.93 X 0.90	0.87
111	1	0.5 X 1.93 X 0.85	0.82
112	1	0.5 X 7.60 X 0.33	1.25
113	1	0.5 X 6.58 X 0.57	1.88
114	1	0.5 X 2.28 X 0.08	0.09
115	1	0.5 X 4.40 X 1.30	2.86
116	1	0.5 X 1.13 X 0.07	0.04
117	1	0.5 X 1.13 X 0.21	0.21
118	1	0.5 X 3.71 X 0.51	1.13
119	1	0.5 X 3.71 X 1.14	2.11
120	1	0.5 X 3.95 X 1.39	2.75
121	1	0.5 X 3.95 X 1.82	3.59
122	1	0.5 X 5.68 X 2.24	6.36
123	1	0.5 X 5.68 X 2.78	7.90
124	1	0.5 X 4.74 X 2.01	4.76
125	1	0.5 X 4.74 X 2.37	5.62
126	1	0.5 X 4.97 X 2.09	5.19
127	1	0.5 X 4.97 X 2.49	6.19
128	1	0.5 X 5.40 X 2.04	5.51
129	1	0.5 X 5.40 X 2.90	7.83
130	1	0.5 X 5.63 X 0.88	2.48
131	1	0.5 X 5.63 X 0.79	2.11
132	1	0.5 X 1.81 X 0.79	0.71
133	1	0.5 X 1.81 X 0.75	0.68
134	1	0.5 X 1.08 X 0.21	1.13
135	1	0.5 X 9.98 X 0.43	2.15
136	1	0.5 X 1.93 X 0.90	0.87
137	1	0.5 X 1.93 X 0.85	0.82
138	1	0.5 X 7.60 X 0.33	1.25
139	1	0.5 X 6.58 X 0.57	1.88
140	1	0.5 X 2.28 X 0.08	0.09
141	1	0.5 X 4.40 X 1.30	2.86
142	1	0.5 X 1.13 X 0.07	0.04
143	1	0.5 X 1.13 X 0.21	0.21
144	1	0.5 X 3.71 X 0.51	1.13
145	1	0.5 X 3.71 X 1.14	2.11
146	1	0.5 X 3.95 X 1.39	2.75
147	1	0.5 X 3.95 X 1.82	3.59
148	1	0.5 X 5.68 X 2.24	6.36
149	1	0.5 X 5.68 X 2.78	7.90
150	1	0.5 X 4.74 X 2.01	4.76
151	1	0.5 X 4.74 X 2.37	5.62
152	1	0.5 X 4.97 X 2.09	5.19
153	1	0.5 X 4.97 X 2.49	6.19
154	1	0.5 X 5.40 X 2.04	5.51
155	1	0.5 X 5.40 X 2.90	7.83
156	1	0.5 X 5.63 X 0.88	2.48
157	1	0.5 X 5.63 X 0.79	2.11
158	1	0.5 X 1.81 X 0.79	0.71
159	1	0.5 X 1.81 X 0.75	0.68
160	1	0.5 X 1.08 X 0.21	1.13
161	1	0.5 X 9.98 X 0.43	2.15
162	1	0.5 X 1.93 X 0.90	0.87
163	1	0.5 X 1.93 X 0.85	0.82
164	1	0.5 X 7.60 X 0.33	1.25
165	1	0.5 X 6.58 X 0.57	1.88
166	1	0.5 X 2.28 X 0.08	0.09
167	1	0.5 X 4.40 X 1.30	2.86
168	1	0.5 X 1.13 X 0.07	0.04
169	1	0.5 X 1.13 X 0.21	0.21
170	1	0.5 X 3.71 X 0.51	1.13
171	1	0.5 X 3.71 X 1.14	2.11
172	1	0.5 X 3.95 X 1.39	2.75
173	1	0.5 X 3.95 X 1.82	3.59
174	1	0.5 X 5.68 X 2.24	6.36
175	1	0.5 X 5.68 X 2.78	7.90
176	1	0.5 X 4.74 X 2.01	4.76
177	1	0.5 X 4.74 X 2.37	5.62
178	1	0.5 X 4.97 X 2.09	5.19
179	1	0.5 X 4.97 X 2.49	6.19
180	1	0.5 X 5.40 X 2.04	5.51
181	1	0.5 X 5.40 X 2.90	7.83
182	1	0.5 X 5.63 X 0.88	2.48
183	1	0.5 X 5.63 X 0.79	2.11
184	1	0.5 X 1.81 X 0.79	0.71
185	1	0.5 X 1.81 X 0.75	0.68
186	1	0.5 X 1.08 X 0.21	1.13
187	1	0.5 X 9.98 X 0.43	2.15
188	1	0.5 X 1.93 X 0.90	0.87
189	1	0.5 X 1.93 X 0.85	0.82
190	1	0.5 X 7.60 X 0.33	1.25
191	1	0.5 X 6.58 X 0.57	1.88
192	1	0.5 X 2.28 X 0.08	0.09
193	1	0.5 X 4.40 X 1.30	2.86
194	1	0.5 X 1.13 X 0.07	0.04
195	1	0.5 X 1.13 X 0.21	0.21
196	1	0.5 X 3.71 X 0.51	1.13
197	1	0.5 X 3.71 X 1.14	2.11
198	1	0.5 X 3.95 X 1.39	2.75
199	1	0.5 X 3.95 X 1.82	3.59
200	1	0.5 X 5.68 X 2.24	6.36
201	1	0.5 X 5.68 X 2.78	7.90
202	1	0.5 X 4.74 X 2.01	4.76
203	1	0.5 X 4.74 X 2.37	5.62
204	1	0.5 X 4.97 X 2.09	5.19
205	1	0.5 X 4.97 X 2.49	6.19
206	1	0.5 X 5.40 X 2.04	5.51
207	1	0.5 X 5.40 X 2.90	7.83
208	1	0.5 X 5.63 X 0.88	2.48
209	1	0.5 X 5.63 X 0.79	2.11
210	1	0.5 X 1.81 X 0.79	0.71
211	1	0.5 X 1.81 X 0.75	0.68
212	1	0.5 X 1.08 X 0.21	1.13
213	1	0.5 X 9.98 X 0.43	2.15
214	1	0.5 X 1.93 X 0.90	0.87
215	1	0.5 X 1.93 X 0.85	0.82
216	1	0.5 X 7.60 X 0.33	1.25
217	1	0.5 X 6.58 X 0.57	1.88
218	1	0.5 X 2.28 X 0.08	0.09
219	1	0.5 X 4.40 X 1.30	2.86
220	1	0.5 X 1.13 X 0.07	0.04
221	1	0.5 X 1.13 X 0.21	0.21
222	1	0.5 X 3.71 X 0.51	1.13
223	1	0.5 X 3.71 X 1.14	2.11
224	1	0.5 X 3.95 X 1.39	2.75
225	1	0.5 X 3.95 X 1.82	3.59
226	1	0.5 X 5.68 X 2.24	6.36
227	1	0.5 X 5.68 X 2.78	7.90
228	1	0.5 X 4.74 X 2.01	4.76
229	1	0.5 X 4.74 X 2.37	5.62
230	1	0.5 X 4.97 X 2.09	5.19
231	1	0.5 X 4.97 X 2.49	6.19
232	1	0.5 X 5.40 X 2.04	5.51
233	1	0.5 X 5.40 X 2.90	7.83
234	1	0.5 X 5.63 X 0.88	2.48
235	1	0.5 X 5.63 X 0.79	2.11
236	1	0.5 X 1.81 X 0.79	0.71
237	1	0.5 X 1.81 X 0.75	0.68
238	1	0.5 X 1.08 X 0.21	1.13
239	1	0.5 X 9.98 X 0.43	2.15
240	1	0.5 X	