

**AREA DIAGRAM OF TYPICAL FLOOR BUILDING**

**AREA CALCULATION OF TYPICAL FLOOR BUILDING**

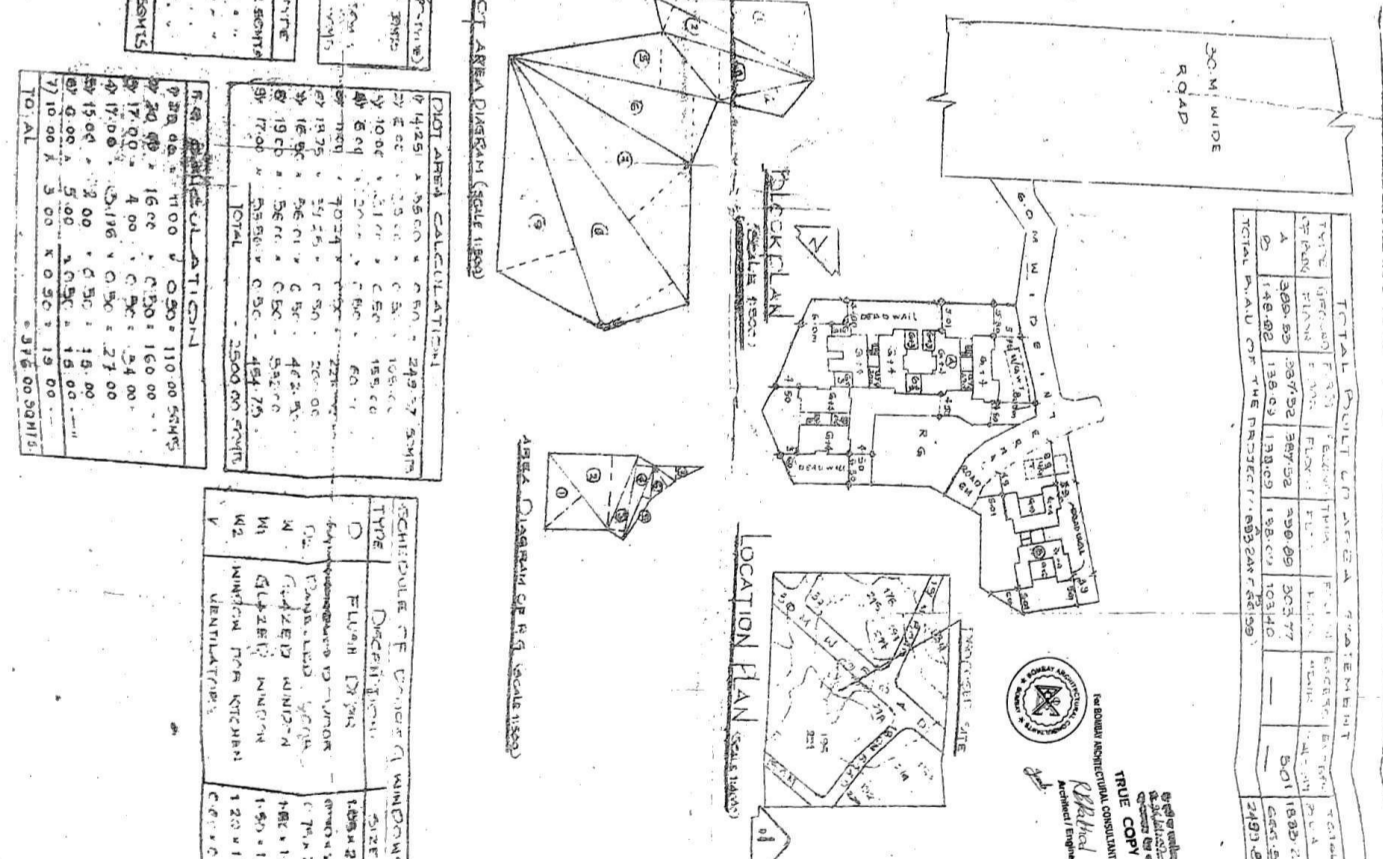
1. 4.75 x 3.85 = 18.28 SQ.M
2. 3.85 x 4.75 = 18.28 SQ.M
3. 4.75 x 3.85 = 18.28 SQ.M
4. 3.85 x 4.75 = 18.28 SQ.M
<b>TOTAL = 73.12 SQ.M</b>

**AREA CALCULATION OF TYPICAL BUILDING**

1. 4.75 x 3.85 = 18.28 SQ.M
2. 3.85 x 4.75 = 18.28 SQ.M
3. 4.75 x 3.85 = 18.28 SQ.M
4. 3.85 x 4.75 = 18.28 SQ.M
5. 4.75 x 3.85 = 18.28 SQ.M
6. 3.85 x 4.75 = 18.28 SQ.M
7. 4.75 x 3.85 = 18.28 SQ.M
8. 3.85 x 4.75 = 18.28 SQ.M
9. 4.75 x 3.85 = 18.28 SQ.M
10. 3.85 x 4.75 = 18.28 SQ.M
<b>TOTAL = 182.80 SQ.M</b>

**AREA CALCULATION OF TYPICAL BUILDING**

1. 4.75 x 3.85 = 18.28 SQ.M
2. 3.85 x 4.75 = 18.28 SQ.M
3. 4.75 x 3.85 = 18.28 SQ.M
4. 3.85 x 4.75 = 18.28 SQ.M
5. 4.75 x 3.85 = 18.28 SQ.M
6. 3.85 x 4.75 = 18.28 SQ.M
7. 4.75 x 3.85 = 18.28 SQ.M
8. 3.85 x 4.75 = 18.28 SQ.M
9. 4.75 x 3.85 = 18.28 SQ.M
10. 3.85 x 4.75 = 18.28 SQ.M
<b>TOTAL = 182.80 SQ.M</b>



**TOTAL BUILDING AREA STATEMENT**

TYPE OF PLAN	AREA (SQ.M)	NO. OF FLOORS	TOTAL AREA (SQ.M)
A	368.80	2	737.60
B	148.00	1	148.00
C	148.00	1	148.00
<b>TOTAL PLAN OF THE PROJECT</b>	<b>664.80</b>	<b>3</b>	<b>1992.00</b>

**AREA CALCULATION OF TYPICAL BUILDING**

1. 4.75 x 3.85 = 18.28 SQ.M
2. 3.85 x 4.75 = 18.28 SQ.M
3. 4.75 x 3.85 = 18.28 SQ.M
4. 3.85 x 4.75 = 18.28 SQ.M
5. 4.75 x 3.85 = 18.28 SQ.M
6. 3.85 x 4.75 = 18.28 SQ.M
7. 4.75 x 3.85 = 18.28 SQ.M
8. 3.85 x 4.75 = 18.28 SQ.M
9. 4.75 x 3.85 = 18.28 SQ.M
10. 3.85 x 4.75 = 18.28 SQ.M
<b>TOTAL = 182.80 SQ.M</b>

**SCHEDULE OF WINDOW SIZES**

TYPE	DESCRIPTION	NO. OF WINDOWS	SIZE
D	DOUBLE GLAZED WINDOW	10	1.20 x 1.20
M	MULTIPLE WINDOW	15	1.20 x 1.20
N	MINOR WINDOW	10	1.20 x 1.20
V	VENTILATOR	10	1.20 x 1.20

**PROPOSED BLDG ON PLOT**

**GUJARATI ENGINEERS**

**DOMAY ARCHITECTURAL CONSULTANTS**

**15, VENUS AVENUE**

**NAVHAR ROAD**

**BHARUCHA**