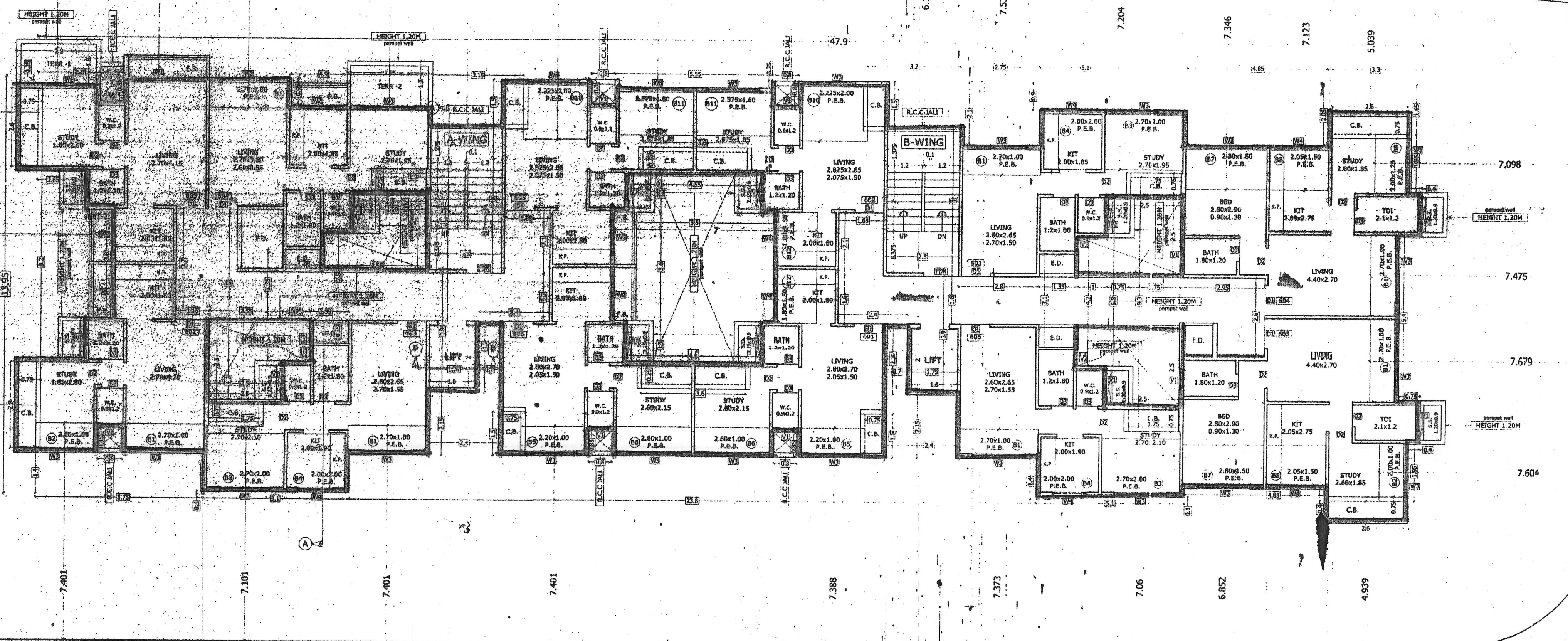


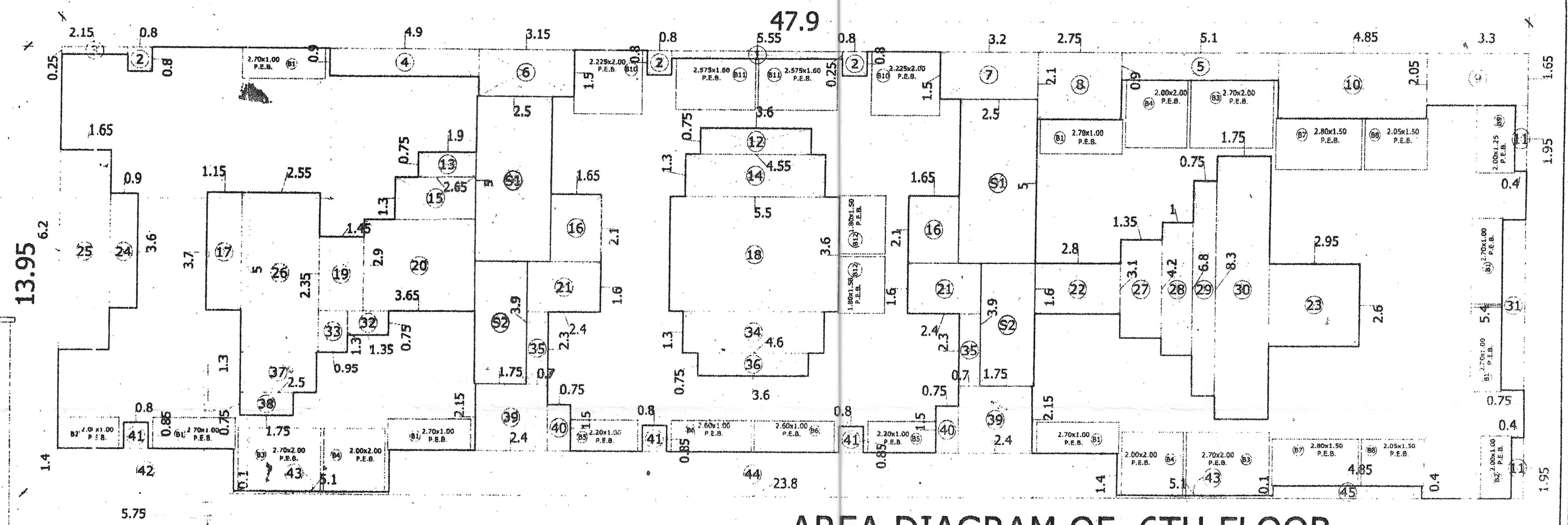
APPROVED SUBJECT TO CONDITIONS MENTIONED IN This Office Letter No. C1000/131 AIPD 816 Dated 7 JUN 2013
 Additional Town Planning Officer, Raigad Bhavan, 4th Floor, Plot No. - A, Sector - 22, Kamaythe, NAVI, MUMBAI.

PROJECTED TERRACE AREA	
TERRACE - 1	= 2.900 x 1.500 x 1 = 4.350
TERRACE - 2	= 2.950 x 1.450 x 1 = 4.278
TOTAL	8.628
PER. TERR	53.333



6TH FLOOR

6TH FLOOR AREA CALCULATION	
AREA OF BLOCK	47.920 x 13.250 x 1 = 638.205 M ²
DEDUCTIONS	
1	5.550 x 0.750 x 1 = 4.163 M ²
2	0.800 x 0.800 x 1 = 0.640 M ²
3	2.150 x 0.900 x 1 = 1.935 M ²
4	4.800 x 0.900 x 1 = 4.320 M ²
5	3.100 x 0.900 x 1 = 2.790 M ²
6	3.150 x 1.300 x 1 = 4.095 M ²
7	3.200 x 1.500 x 1 = 4.800 M ²
8	2.750 x 2.100 x 1 = 5.775 M ²
9	3.900 x 1.650 x 1 = 6.435 M ²
10	4.950 x 2.050 x 1 = 10.148 M ²
11	6.480 x 1.950 x 1 = 12.732 M ²
12	3.600 x 0.750 x 1 = 2.700 M ²
13	1.900 x 0.750 x 1 = 1.425 M ²
14	4.550 x 1.300 x 1 = 5.915 M ²
15	2.650 x 1.300 x 1 = 3.445 M ²
16	1.650 x 3.600 x 1 = 5.940 M ²
17	1.150 x 3.700 x 1 = 4.255 M ²
18	5.900 x 3.650 x 1 = 21.635 M ²
19	1.450 x 2.350 x 1 = 3.408 M ²
20	3.650 x 2.900 x 1 = 10.585 M ²
21	2.400 x 1.600 x 1 = 3.840 M ²
22	2.900 x 1.600 x 1 = 4.640 M ²
23	2.950 x 2.600 x 1 = 7.670 M ²
24	0.900 x 3.600 x 1 = 3.240 M ²
25	1.650 x 6.200 x 1 = 10.230 M ²
26	2.550 x 5.600 x 1 = 14.280 M ²
27	1.300 x 3.100 x 1 = 4.030 M ²
28	1.000 x 4.200 x 1 = 4.200 M ²
29	0.750 x 8.800 x 1 = 6.600 M ²
30	1.750 x 8.200 x 1 = 14.350 M ²
31	0.750 x 5.400 x 1 = 4.050 M ²
32	1.350 x 0.750 x 1 = 1.013 M ²
33	0.950 x 1.300 x 1 = 1.235 M ²
34	4.600 x 1.300 x 1 = 5.980 M ²
35	0.700 x 2.300 x 1 = 1.610 M ²
36	3.600 x 0.750 x 1 = 2.700 M ²
37	2.500 x 1.300 x 1 = 3.250 M ²
38	1.750 x 0.750 x 1 = 1.313 M ²
39	2.400 x 2.150 x 1 = 5.160 M ²
40	0.750 x 1.500 x 1 = 1.125 M ²
41	0.800 x 0.850 x 1 = 0.680 M ²
42	5.750 x 1.400 x 1 = 8.050 M ²
43	5.100 x 0.100 x 1 = 0.510 M ²
44	23.800 x 1.400 x 1 = 33.320 M ²
45	4.850 x 0.400 x 1 = 1.940 M ²
TOTAL DEDUCTION	259.318 M²
BALCONY DEDUCTIONS	
B1	2.700 x 1.900 x 1 = 5.130 M ²
B2	2.900 x 1.900 x 1 = 5.510 M ²
B3	2.700 x 2.000 x 1 = 5.400 M ²
B4	2.600 x 2.000 x 1 = 5.200 M ²
B5	2.700 x 1.900 x 1 = 5.130 M ²
B6	2.600 x 1.900 x 1 = 4.940 M ²
B7	2.600 x 1.900 x 1 = 4.940 M ²
B8	2.500 x 1.900 x 1 = 4.750 M ²
B9	2.600 x 1.900 x 1 = 4.940 M ²
B10	2.225 x 2.000 x 1 = 4.450 M ²
B11	2.575 x 1.600 x 1 = 4.120 M ²
B12	1.800 x 1.900 x 1 = 3.420 M ²
TOTAL BALCONY	100.799 M²
STAIR CASE AREA	
S1	2.500 x 5.000 x 1 = 12.500 M ²
S2	1.750 x 3.500 x 1 = 6.125 M ²
TOTAL AREA	38.650 M²
GROSS AREA	
638.205 - 259.318 - 100.799 - 12.500 - 6.125	408.887 M²
15% PERMISSIBLE BALCONY	408.887 x 15 / 115 = 7.680 M²
BUILT UP AREA FOR PER	408.887 + 7.680 = 416.567 M²
BUILT UP AREA	416.567 M²



AREA DIAGRAM OF 6TH FLOOR



ELEVATION

WING	FLOOR	FLAT NO.	CARPET AREA	WING	FLOOR	FLAT NO.	CARPET AREA
A	1	101	26.558	B	1	101	25.698
A	1	102	23.990	B	1	102	27.848
A	1	103	23.300	B	1	103	27.848
A	1	104	26.558	B	1	104	26.558
A	2	201	26.558	B	2	201	24.043
A	2	202	23.990	B	2	202	23.166
A	2	203	23.300	B	2	203	27.848
A	2	204	26.558	B	2	204	27.848
A	3	301	26.558	B	3	301	26.558
A	3	302	23.166	B	3	302	23.166
A	3	303	23.990	B	3	303	25.998
A	3	304	26.558	B	3	304	27.848
A	4	401	26.558	B	4	401	24.043
A	4	402	23.166	B	4	402	23.166
A	4	403	23.990	B	4	403	25.998
A	4	404	26.558	B	4	404	27.848
A	5	501	26.558	B	5	501	24.043
A	5	502	23.166	B	5	502	23.166
A	5	503	23.990	B	5	503	25.998
A	5	504	26.558	B	5	504	27.848
A	6	601	26.558	B	6	601	24.043
A	6	602	23.166	B	6	602	23.166
A	6	603	23.990	B	6	603	25.998
A	6	604	26.558	B	6	604	27.848
A	7	701	26.558	B	7	701	24.043
A	7	702	23.166	B	7	702	23.166
A	7	703	23.990	B	7	703	25.998
A	7	704	26.558	B	7	704	27.848
A	7	705	26.558	B	7	705	24.043
A	7	706	24.043	B	7	706	26.558

PROJECT
 DEVELOPMENT PERMISSION FOR PROPOSED RESIDENTIAL BUILDING (12.5% SCHEME) ON PLOT NO - 70A & 84A, SECTOR - 22, KAMAYTHE, NAVI, MUMBAI.

FOR RESICOM CONSTRUCTIONS PARTNER
 M/S. RESICOM CONSTRUCTIONS ARCHITECTS

FOR, ATUL PATEL ARCHITECTS

SCALE DRAWING NO. 4/5
 1-100