

CONTENTS OF SHEETS

BLDG. NO. - 4
BASEMENT + STILT + PODIUM + 1ST TO 33RD FLOOR

SECTION - A-A

STAMP OF APPROVAL OF PLAN

AMENDED
Plans are approved subject to conditions
Prescribed in Form No. V.P. 505 (2006) &
TMC/ID-DP/TF/1447/23 Dated 26/09/2023



Deputy Engineer (TOD) Executive Engineer (TOD)
Thane Municipal Corporation
The City of Thane

साचधान
"संगठन नवविकासानुसार विकासात्मक व कार्यात्मक
पिकात्मक निर्देशना पिकात्मकानुसार आवकक त्या
परामर्शना व पिका विकासात्मक कार्या, मध्यम
विकासात्मक व कार्यात्मक अधिकात्मक विकासात्मक
कार्या व पिका विकासात्मक विकासात्मक विकासात्मक
कार्या व पिका विकासात्मक विकासात्मक विकासात्मक

STAMP OF RECEIPT OF PLAN

DESCRIPTION

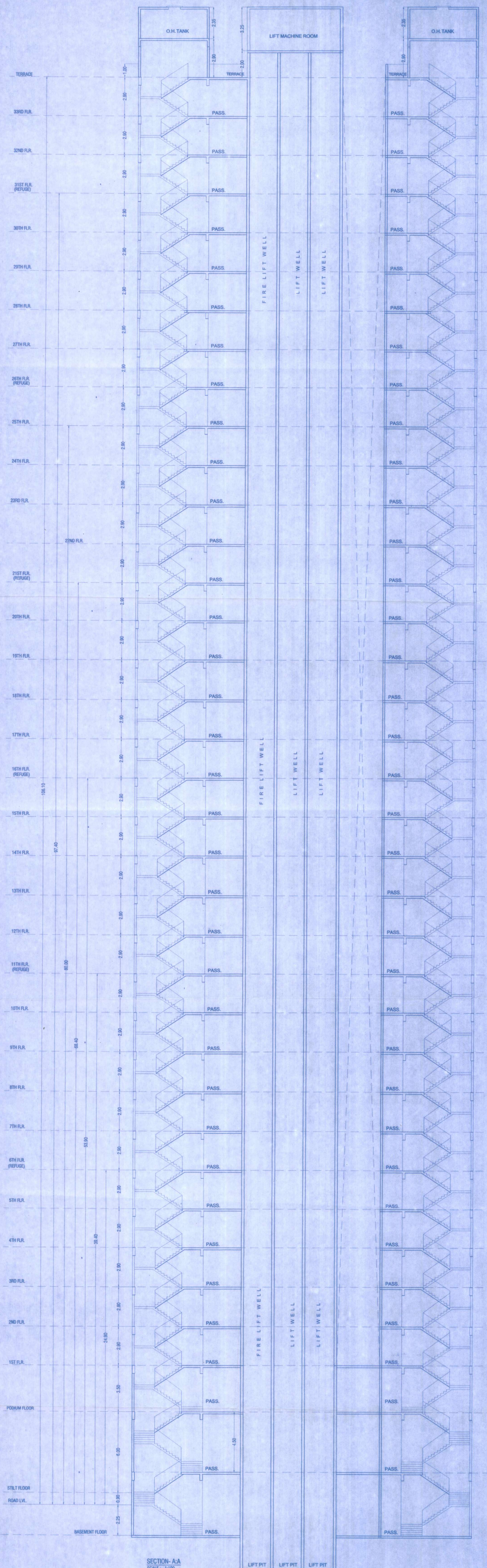
PROPOSED LAYOUT ON PLOT BEARING
New S. No. 16 (H.No.1, 2, 3, 4, 5, 6, 8A, 9A, 10A/11A, 12/11A, 12/2A),
New S. No. 17 (H.No.1, 2, 3, 4, 5, 6, 7(A+B), 8, 9, 10, 11(A+B+C), 12, 13, 14),
New S. No. 18 (H.No.1, 2, 3, 4, 5, 6B, 7, 8, 9, 10A, 11A),
New S. No. 19 (H.No.23, 29, 30, 31, 32, 37, 42, 43(A, 45),
New S. No. 22/A, New S. No. 23/A, New S. No. 24,
New S. No. 25 (H.No.1, 2, 3, 4, 5/A, 7/A, 9/C, 12P/L, 13A),
New S. No. 26 (H.No.8/1/B, 9/A/2, 10A+B, 11C, 12),
New S. No. 27 (H.No.10/A, 11/A, 15, 16A, 17),
New S. No. 40 (H.No.15/A, 17/A, 22/A), New S. No. 48/4/A/1,
New S. No. 49 (H.No.1/A, 2, 3, 4, 5, 6, 7/A, 8/A),
New S. No. 50 (H.No.3/A/1), New S. No. 51 (H.No.3/A, 5/A),
New S. No. 77 (H.No.13C, 14A)
AT VILLAGE - BALKUM, TAL - DIST. - THANE.

NAME & SIGNATURE OF OWNERS/POAH
FOR,

[Signature]
M/s. DOSTI ENTERPRISES.
ARCHITECT

[Signature]
10 FOLDS

ARCHITECTS & CONSULTANTS
506, A Wing, Div. Corpn., Eastern Express Highway,
Candray Junction, Koper, Thane (W) 400 601.
T : 022-41008882 / 83 / 84, Email : 10foldsarchitects@gmail.com



SECTION - A-A
SCALE - 1:100

LIFT PIT LIFT PIT LIFT PIT