

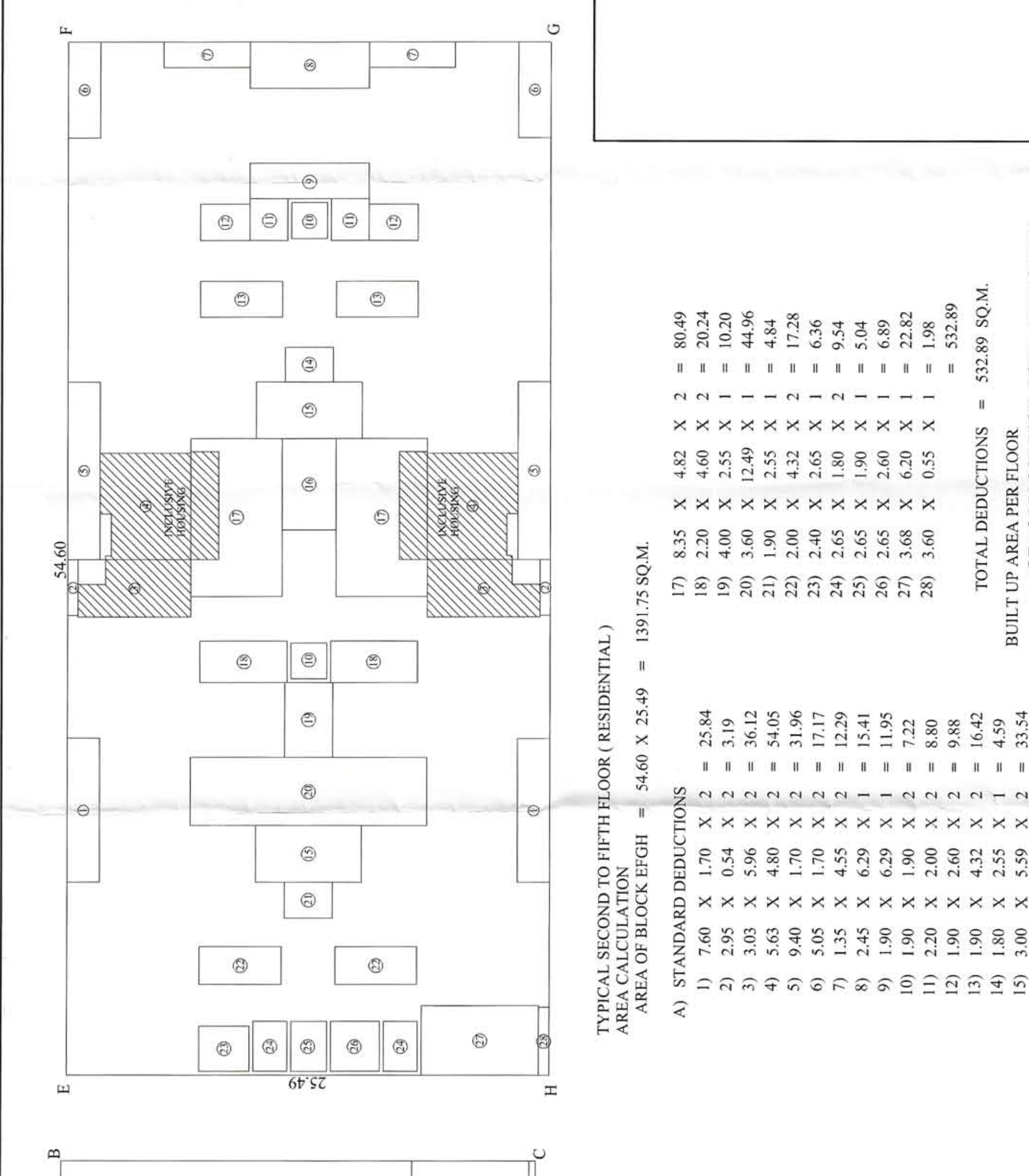
PROPOSED ALLOCATION & SUBDIVISION FOR RESIDENTIAL COMMERCIAL & HOSPITALS

**APPROVED**

The Plans submitted in accordance with the accompanying conditions of approval are hereby approved for a period of 12 months from the date of issue of this approval.

DATE: 23/08/2024

PROJECT: AVINASH KOTHAWALE  
 EXECUTIVE ENGINEER  
 CIVIL ENGINEERING  
 CIVIL ENGINEERING  
 CIVIL ENGINEERING



**TYPICAL SECOND TO FIFTH FLOOR (RESIDENTIAL)**  
 AREA CALCULATION  
 AREA OF BLOCK EFGH = 54.60 X 25.49 = 1391.75 SQ.M.

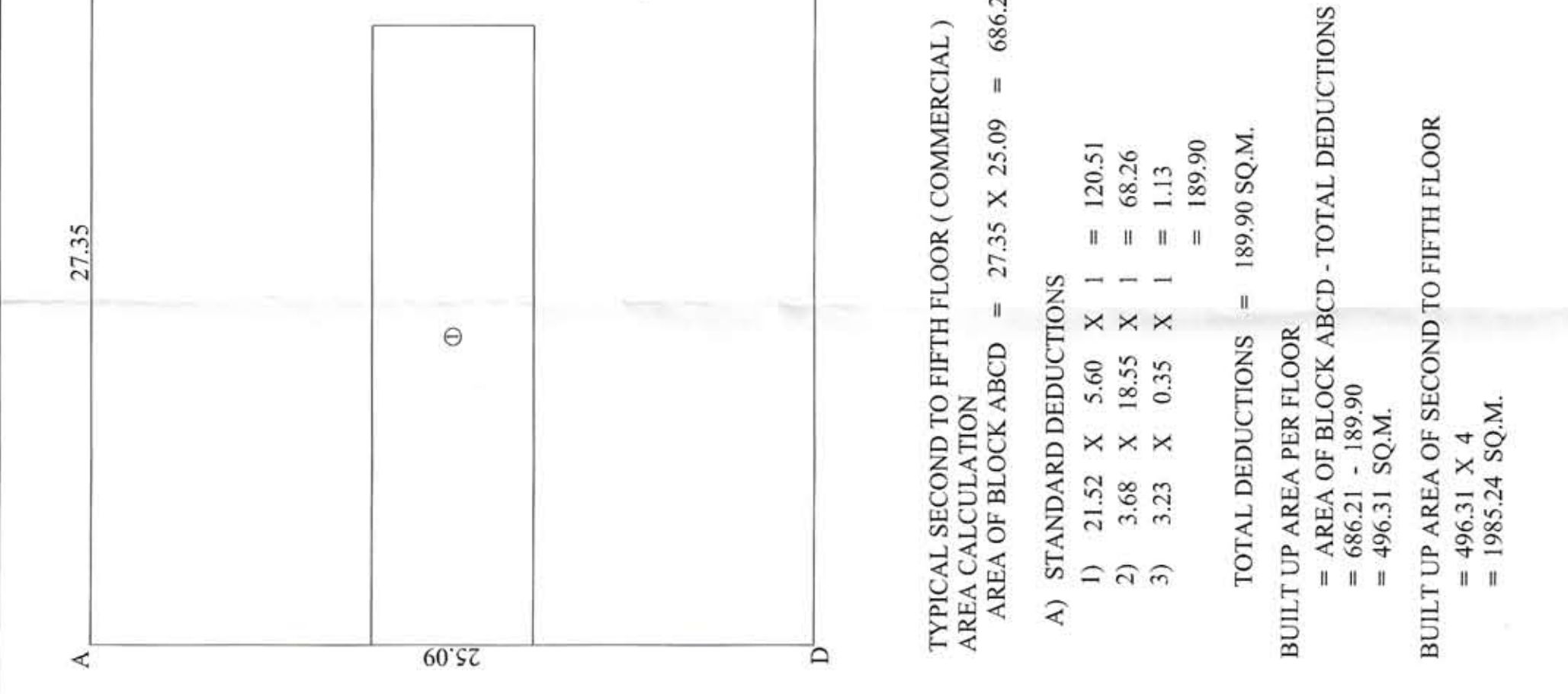
A) STANDARD DEDUCTIONS

1)	7.60 X 1.70 X 2	= 25.84
2)	2.95 X 0.54 X 2	= 3.19
3)	3.03 X 5.96 X 2	= 36.12
4)	5.63 X 4.80 X 2	= 54.05
5)	9.40 X 1.70 X 2	= 31.96
6)	5.05 X 1.70 X 2	= 17.17
7)	1.35 X 4.55 X 2	= 12.29
8)	2.45 X 6.29 X 1	= 15.41
9)	1.90 X 6.29 X 1	= 11.95
10)	1.90 X 1.90 X 2	= 7.22
11)	2.20 X 2.00 X 2	= 8.80
12)	1.90 X 2.60 X 2	= 9.88
13)	1.90 X 4.32 X 2	= 16.42
14)	1.80 X 2.55 X 1	= 4.59
15)	3.00 X 5.59 X 2	= 33.54
16)	4.85 X 2.85 X 1	= 13.82

TOTAL DEDUCTIONS = 532.89 SQ.M.

BUILT UP AREA PER FLOOR = 858.86 SQ.M.

AREA OF BLOCK ABCD - TOTAL DEDUCTIONS = 1391.75 - 532.89 = 858.86 SQ.M.



**TYPICAL SECOND TO FIFTH FLOOR (COMMERCIAL)**  
 AREA CALCULATION  
 AREA OF BLOCK ABCD = 27.35 X 25.09 = 686.21 SQ.M.

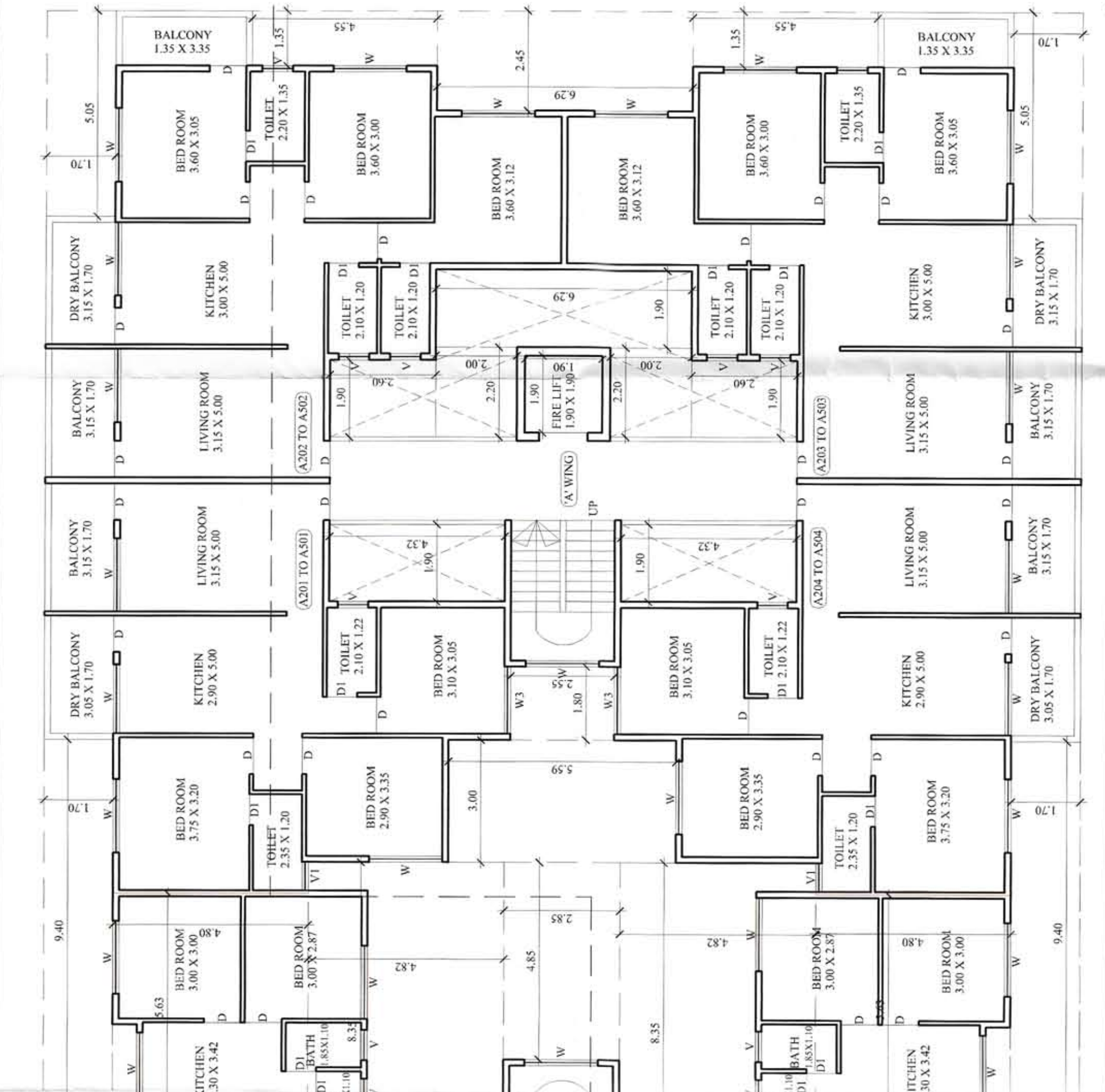
A) STANDARD DEDUCTIONS

1)	21.52 X 5.60 X 1	= 120.51
2)	3.68 X 18.55 X 1	= 68.26
3)	3.23 X 0.35 X 1	= 1.13

TOTAL DEDUCTIONS = 189.90 SQ.M.

BUILT UP AREA PER FLOOR = 496.31 SQ.M.

AREA OF BLOCK ABCD - TOTAL DEDUCTIONS = 686.21 - 189.90 = 496.31 SQ.M.



**TYPICAL SECOND TO FIFTH FLOOR (RESIDENTIAL)**  
 AREA CALCULATION  
 AREA OF BLOCK EFGH = 54.60 X 25.49 = 1391.75 SQ.M.

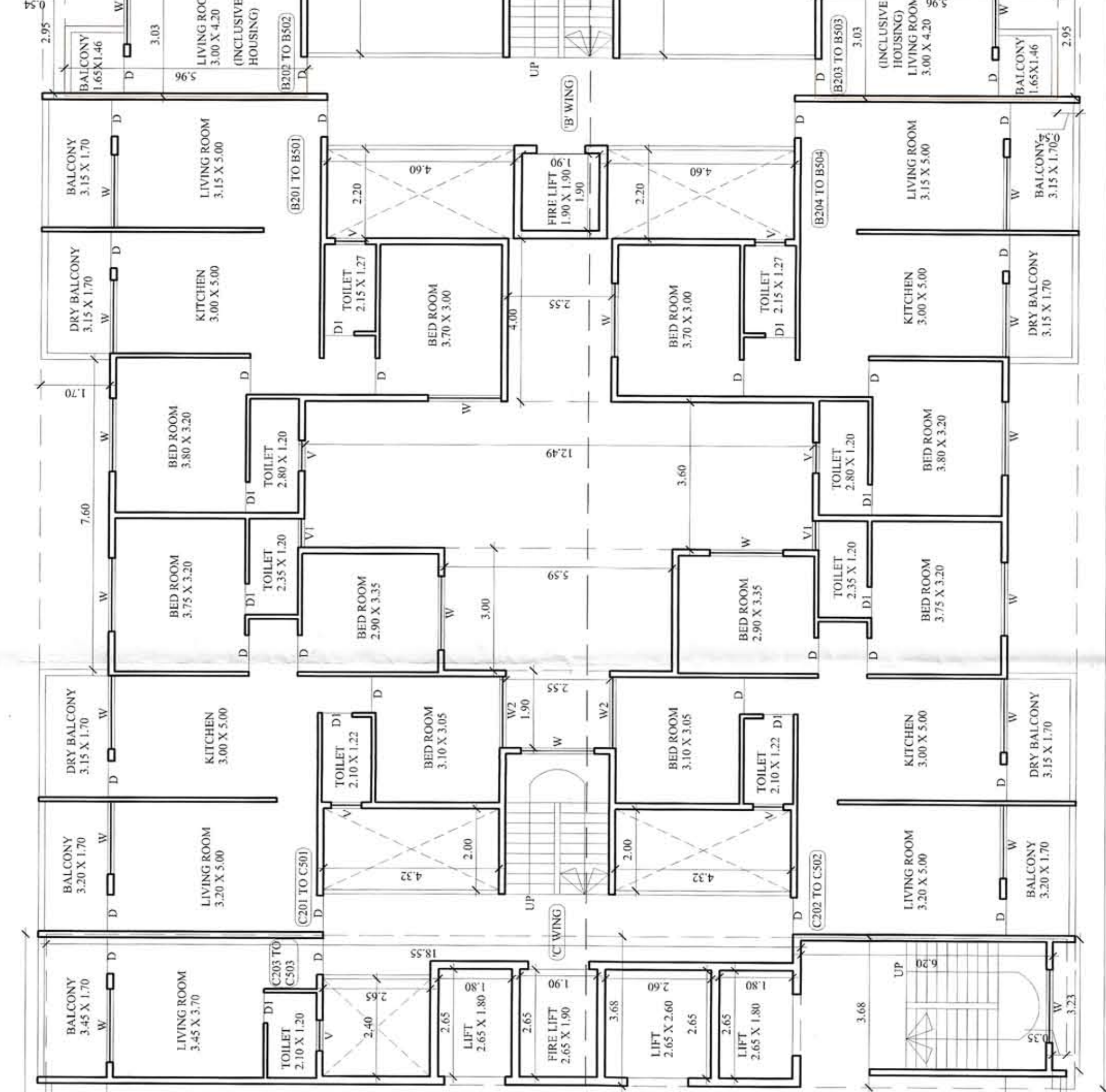
A) STANDARD DEDUCTIONS

17)	8.35 X 4.82 X 2	= 80.49
18)	2.20 X 4.60 X 2	= 20.24
19)	4.00 X 2.55 X 1	= 10.20
20)	3.60 X 12.49 X 1	= 44.96
21)	1.90 X 2.55 X 1	= 4.84
22)	2.00 X 4.32 X 2	= 17.28
23)	2.40 X 2.65 X 2	= 6.36
24)	2.65 X 1.80 X 2	= 9.54
25)	2.65 X 1.90 X 1	= 5.04
26)	2.65 X 2.60 X 1	= 6.89
27)	3.68 X 6.20 X 1	= 22.82
28)	3.60 X 0.55 X 1	= 1.98

TOTAL DEDUCTIONS = 532.89 SQ.M.

BUILT UP AREA PER FLOOR = 858.86 SQ.M.

AREA OF BLOCK ABCD - TOTAL DEDUCTIONS = 1391.75 - 532.89 = 858.86 SQ.M.



**TYPICAL SECOND TO FIFTH FLOOR (COMMERCIAL)**  
 AREA CALCULATION  
 AREA OF BLOCK ABCD = 27.35 X 25.09 = 686.21 SQ.M.

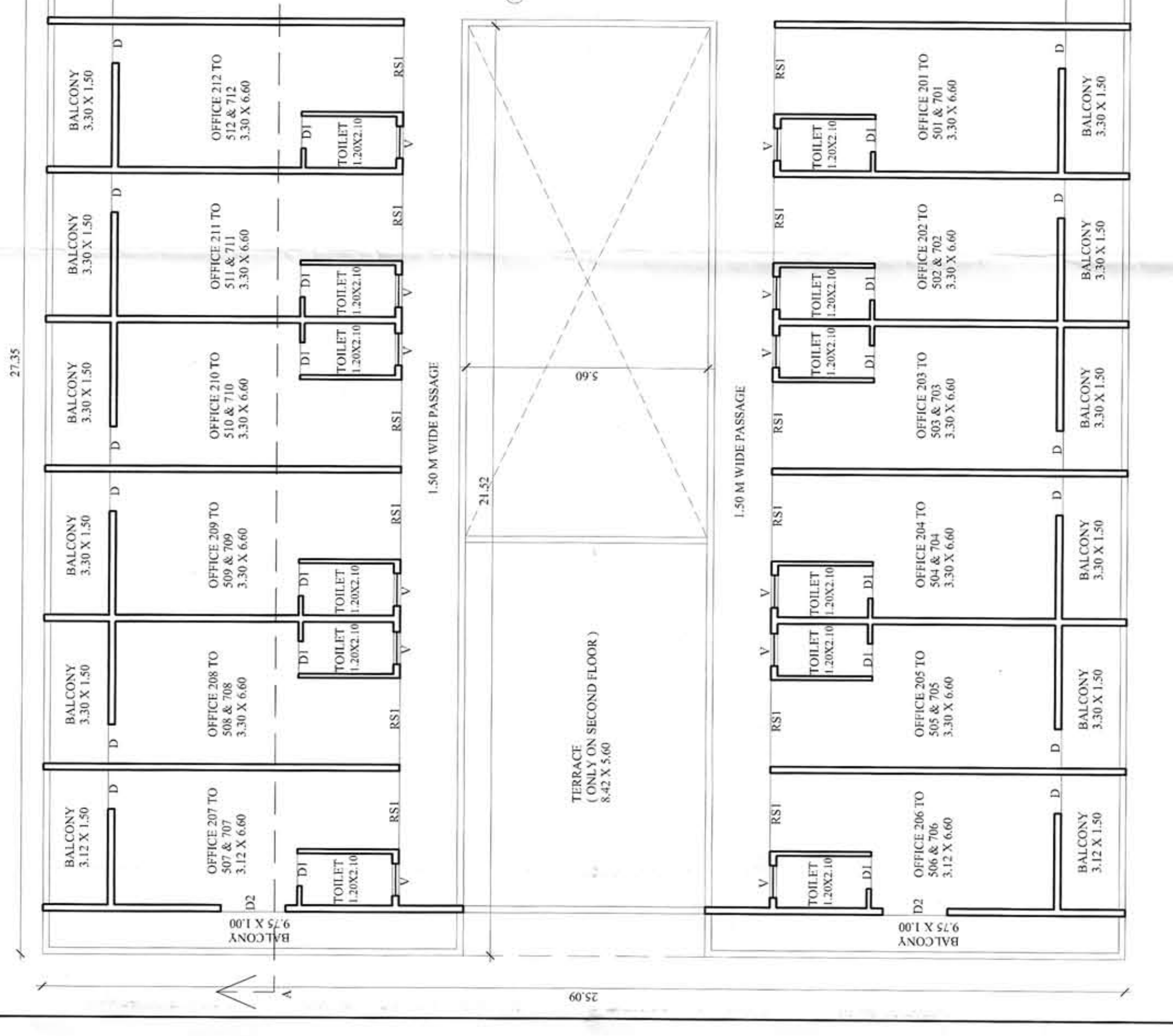
A) STANDARD DEDUCTIONS

1)	4.36 X 1.70 X 2	= 14.82
2)	11.80 X 25.49	= 300.78
3)	3.53 X 2.65	= 9.35
4)	2.65 X 1.80 X 2	= 9.54
5)	2.65 X 1.90 X 2	= 10.04
6)	2.65 X 2.60	= 6.89
7)	0.63 X 8.90	= 5.61
8)	2.45 X 4.90	= 12.01
9)	3.38 X 0.55	= 1.86

TOTAL DEDUCTIONS = 365.90 SQ.M.

BUILT UP AREA PER FLOOR = 320.31 SQ.M.

AREA OF BLOCK ABCD - TOTAL DEDUCTIONS = 686.21 - 365.90 = 320.31 SQ.M.



**TYPICAL SECOND TO FIFTH FLOOR (RESIDENTIAL)**  
 AREA CALCULATION  
 AREA OF BLOCK EFGH = 54.60 X 25.49 = 1391.75 SQ.M.

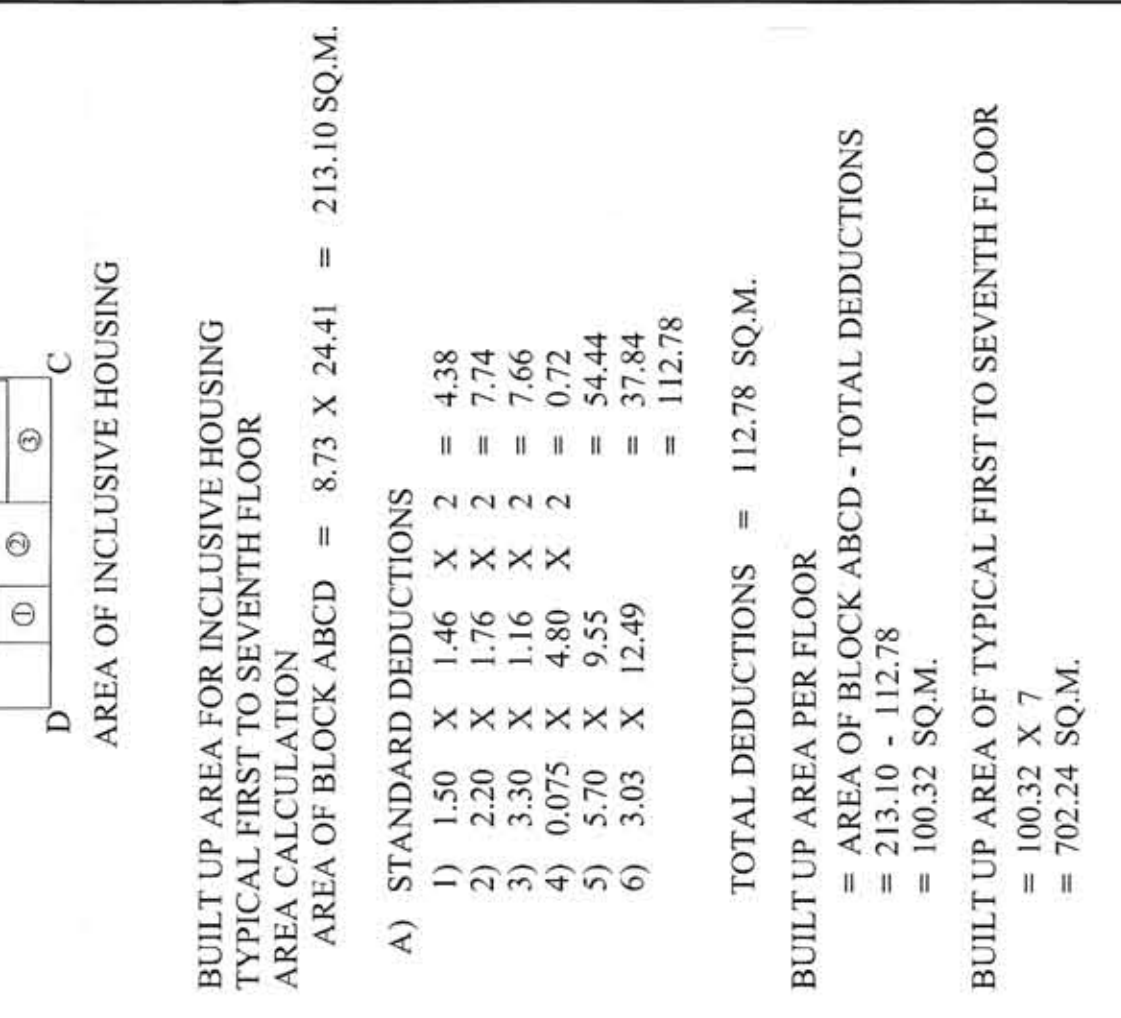
A) STANDARD DEDUCTIONS

16)	3.00 X 5.59 X 2	= 33.54
17)	4.85 X 2.85 X 1	= 13.82
18)	8.35 X 4.82 X 2	= 80.49
19)	2.20 X 4.60 X 2	= 20.24
20)	4.00 X 2.55 X 1	= 10.20
21)	3.60 X 12.49 X 1	= 44.96
22)	1.90 X 2.55 X 1	= 4.84
23)	2.00 X 4.32 X 2	= 17.28
24)	2.40 X 2.65 X 2	= 6.36
25)	2.65 X 1.80 X 2	= 9.54
26)	2.65 X 1.90 X 1	= 5.04
27)	2.65 X 2.60 X 1	= 6.89
28)	3.68 X 6.20 X 1	= 22.82
29)	3.60 X 0.55 X 1	= 1.98

TOTAL DEDUCTIONS = 489.00 SQ.M.

BUILT UP AREA OF FIRST FLOOR = 902.75 SQ.M.

AREA OF BLOCK EFGH - TOTAL DEDUCTIONS = 1391.75 - 489.00 = 902.75 SQ.M.



**AREA OF INCLUSIVE HOUSING**  
 BUILT UP AREA FOR INCLUSIVE HOUSING  
 TYPICAL FIRST TO SEVENTH FLOOR  
 AREA CALCULATION  
 AREA OF BLOCK ABCD = 8.73 X 24.41 = 213.10 SQ.M.

A) STANDARD DEDUCTIONS

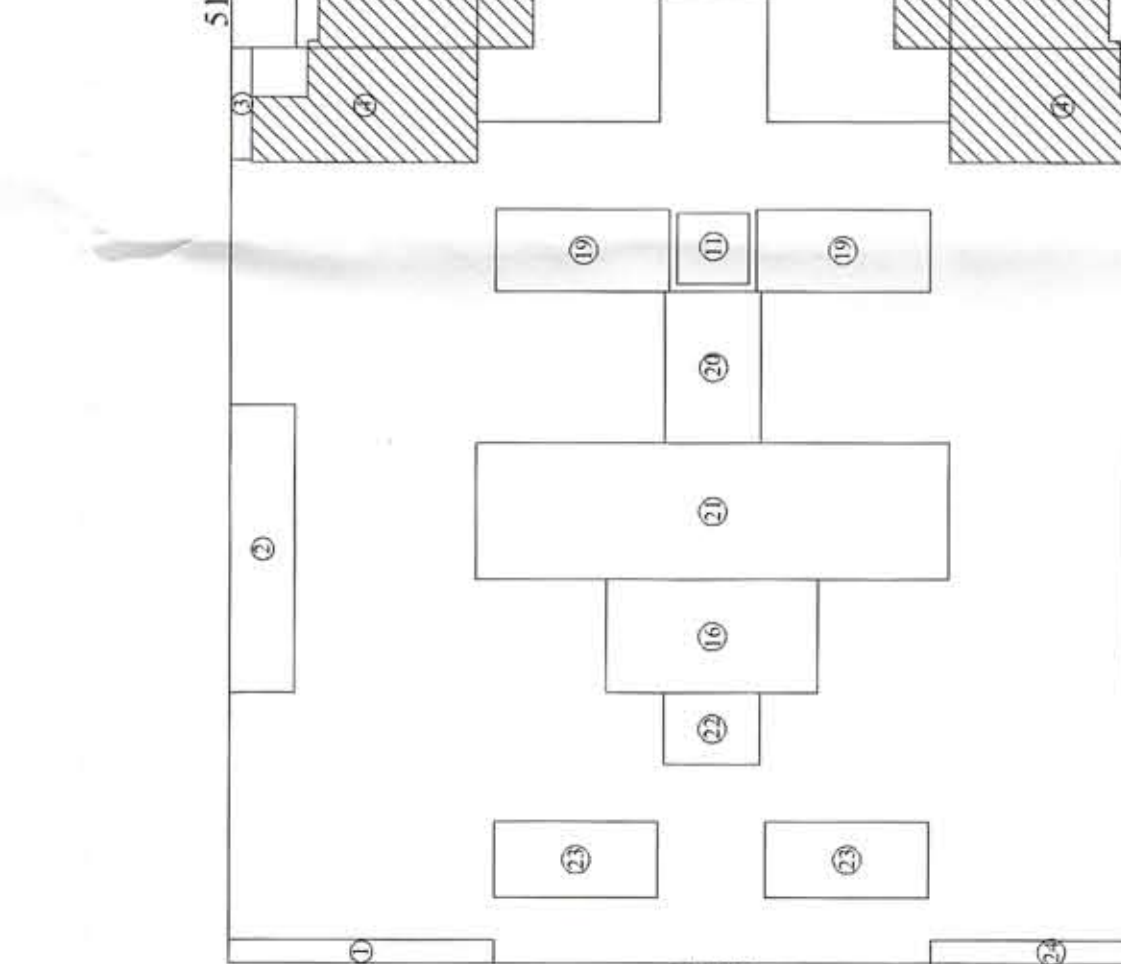
1)	1.50 X 1.46 X 2	= 4.38
2)	2.20 X 1.76 X 2	= 7.74
3)	2.20 X 1.76 X 2	= 7.74
4)	0.075 X 4.80 X 2	= 0.72
5)	5.70 X 9.55	= 54.44
6)	3.03 X 12.49	= 37.84

TOTAL DEDUCTIONS = 112.78 SQ.M.

BUILT UP AREA PER FLOOR = 100.32 SQ.M.

AREA OF BLOCK ABCD - TOTAL DEDUCTIONS = 213.10 - 112.78 = 100.32 SQ.M.

BUILT UP AREA OF TYPICAL FIRST TO SEVENTH FLOOR = 702.24 SQ.M.



**AREA OF INCLUSIVE HOUSING**  
 BUILT UP AREA OF SECOND TO FIFTH FLOOR  
 AREA CALCULATION  
 AREA OF BLOCK ABCD = 8.73 X 24.41 = 213.10 SQ.M.

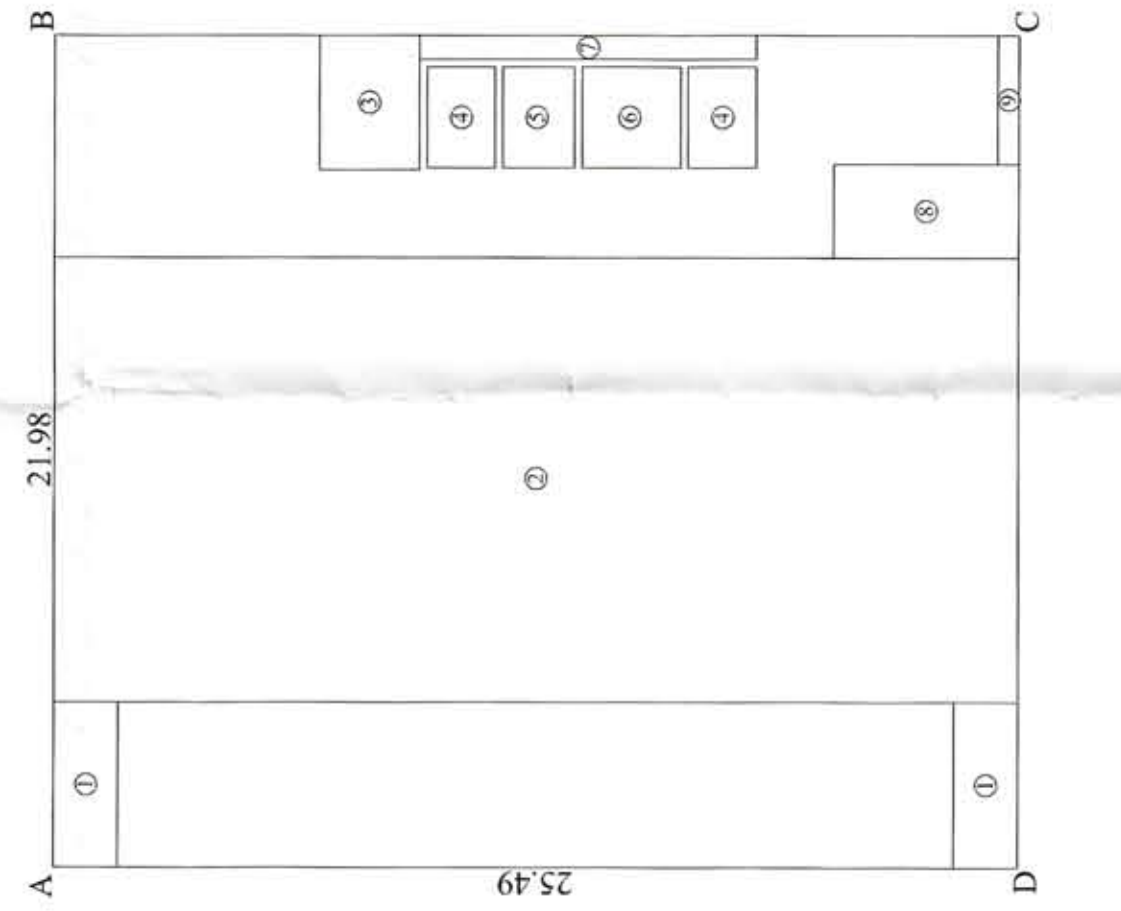
A) STANDARD DEDUCTIONS

16)	3.00 X 5.59 X 2	= 33.54
17)	4.85 X 2.85 X 1	= 13.82
18)	8.35 X 4.82 X 2	= 80.49
19)	2.20 X 4.60 X 2	= 20.24
20)	4.00 X 2.55 X 1	= 10.20
21)	3.60 X 12.49 X 1	= 44.96
22)	1.90 X 2.55 X 1	= 4.84
23)	2.00 X 4.32 X 2	= 17.28
24)	2.40 X 2.65 X 2	= 6.36
25)	2.65 X 1.80 X 2	= 9.54
26)	2.65 X 1.90 X 1	= 5.04
27)	2.65 X 2.60 X 1	= 6.89
28)	3.68 X 6.20 X 1	= 22.82
29)	3.60 X 0.55 X 1	= 1.98

TOTAL DEDUCTIONS = 489.00 SQ.M.

BUILT UP AREA OF FIRST FLOOR = 902.75 SQ.M.

AREA OF BLOCK EFGH - TOTAL DEDUCTIONS = 1391.75 - 489.00 = 902.75 SQ.M.



**AREA OF INCLUSIVE HOUSING**  
 BUILT UP AREA OF SECOND TO FIFTH FLOOR  
 AREA CALCULATION  
 AREA OF BLOCK ABCD = 27.35 X 25.09 = 686.21 SQ.M.

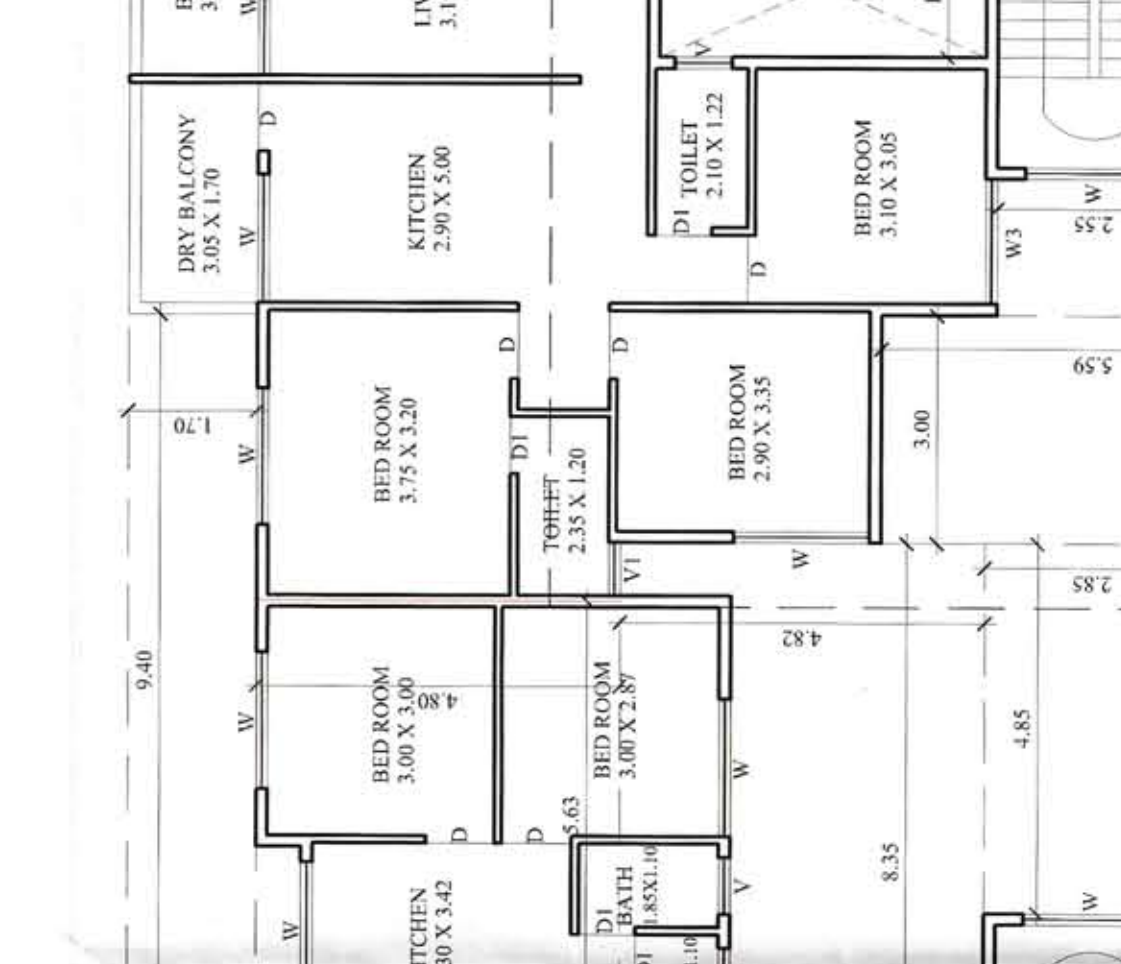
A) STANDARD DEDUCTIONS

1)	4.36 X 1.70 X 2	= 14.82
2)	11.80 X 25.49	= 300.78
3)	3.53 X 2.65	= 9.35
4)	2.65 X 1.80 X 2	= 9.54
5)	2.65 X 1.90 X 2	= 10.04
6)	2.65 X 2.60	= 6.89
7)	0.63 X 8.90	= 5.61
8)	2.45 X 4.90	= 12.01
9)	3.38 X 0.55	= 1.86

TOTAL DEDUCTIONS = 365.90 SQ.M.

BUILT UP AREA OF FIRST FLOOR = 320.31 SQ.M.

AREA OF BLOCK ABCD - TOTAL DEDUCTIONS = 686.21 - 365.90 = 320.31 SQ.M.



**AREA OF INCLUSIVE HOUSING**  
 BUILT UP AREA OF SECOND TO FIFTH FLOOR  
 AREA CALCULATION  
 AREA OF BLOCK EFGH = 54.60 X 25.49 = 1391.75 SQ.M.

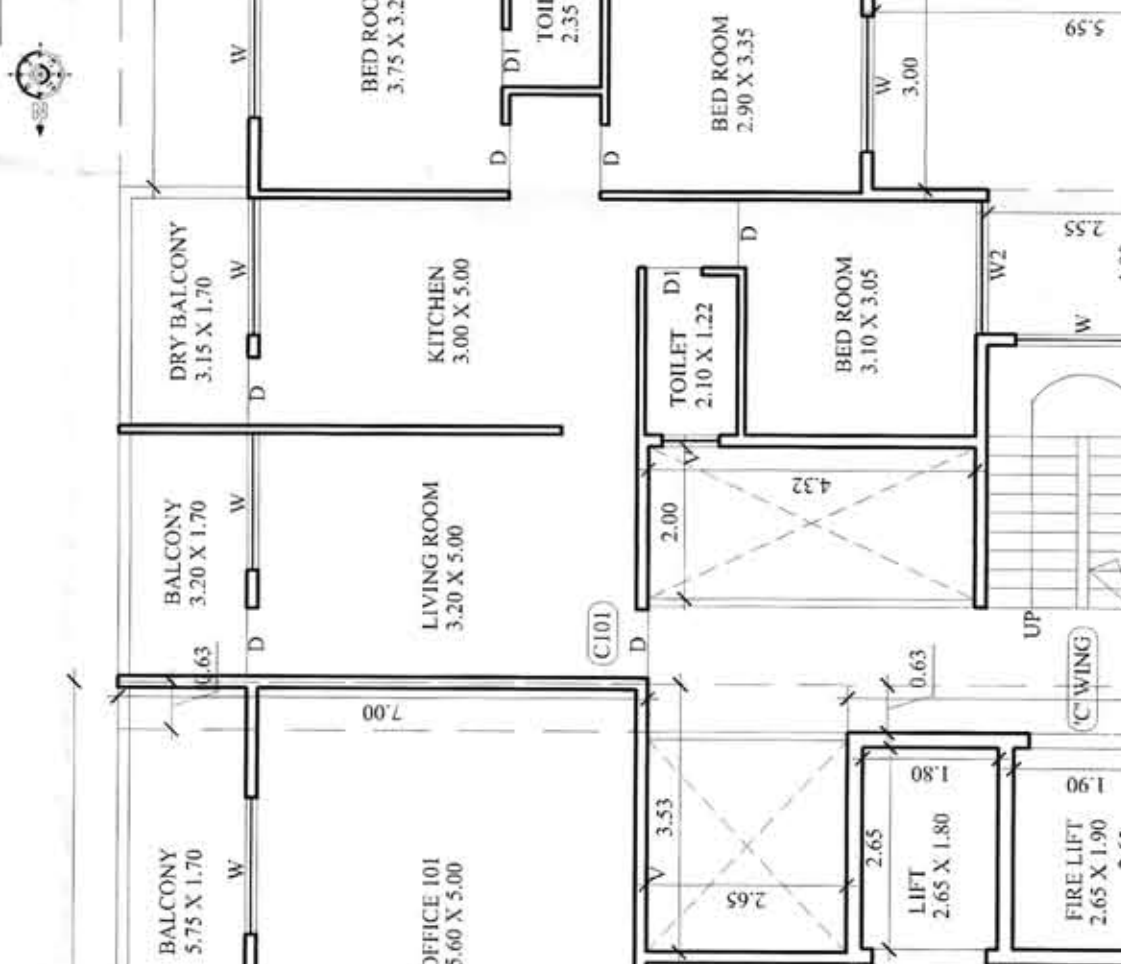
A) STANDARD DEDUCTIONS

16)	3.00 X 5.59 X 2	= 33.54
17)	4.85 X 2.85 X 1	= 13.82
18)	8.35 X 4.82 X 2	= 80.49
19)	2.20 X 4.60 X 2	= 20.24
20)	4.00 X 2.55 X 1	= 10.20
21)	3.60 X 12.49 X 1	= 44.96
22)	1.90 X 2.55 X 1	= 4.84
23)	2.00 X 4.32 X 2	= 17.28
24)	2.40 X 2.65 X 2	= 6.36
25)	2.65 X 1.80 X 2	= 9.54
26)	2.65 X 1.90 X 1	= 5.04
27)	2.65 X 2.60 X 1	= 6.89
28)	3.68 X 6.20 X 1	= 22.82
29)	3.60 X 0.55 X 1	= 1.98

TOTAL DEDUCTIONS = 489.00 SQ.M.

BUILT UP AREA OF FIRST FLOOR = 902.75 SQ.M.

AREA OF BLOCK EFGH - TOTAL DEDUCTIONS = 1391.75 - 489.00 = 902.75 SQ.M.



**AREA OF INCLUSIVE HOUSING**  
 BUILT UP AREA OF SECOND TO FIFTH FLOOR  
 AREA CALCULATION  
 AREA OF BLOCK ABCD = 27.35 X 25.09 = 686.21 SQ.M.

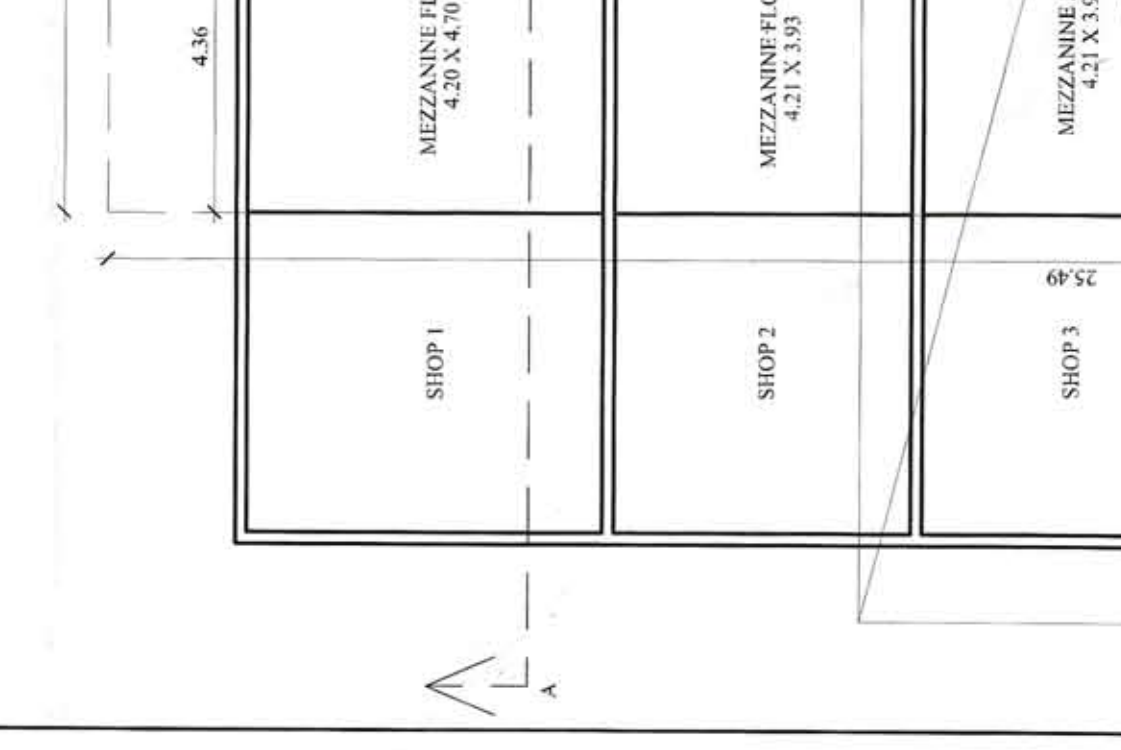
A) STANDARD DEDUCTIONS

1)	4.36 X 1.70 X 2	= 14.82
2)	11.80 X 25.49	= 300.78
3)	3.53 X 2.65	= 9.35
4)	2.65 X 1.80 X 2	= 9.54
5)	2.65 X 1.90 X 2	= 10.04
6)	2.65 X 2.60	= 6.89
7)	0.63 X 8.90	= 5.61
8)	2.45 X 4.90	= 12.01
9)	3.38 X 0.55	= 1.86

TOTAL DEDUCTIONS = 365.90 SQ.M.

BUILT UP AREA OF FIRST FLOOR = 320.31 SQ.M.

AREA OF BLOCK ABCD - TOTAL DEDUCTIONS = 686.21 - 365.90 = 320.31 SQ.M.



**AREA OF INCLUSIVE HOUSING**  
 BUILT UP AREA OF SECOND TO FIFTH FLOOR  
 AREA CALCULATION  
 AREA OF BLOCK EFGH = 54.60 X 25.49 = 1391.75 SQ.M.

A) STANDARD DEDUCTIONS

16)	3.00 X 5.59 X 2	= 33.54
17)	4.85 X 2.85 X 1	= 13.82
18)	8.35 X 4.82 X 2	= 80.49
19)	2.20 X 4.60 X 2	= 20.24
20)	4.00 X 2.55 X 1	= 10.20
21)	3.60 X 12.49 X 1	= 44.96
22)	1.90 X 2.55 X 1	= 4.84
23)	2.00 X 4.32 X 2	= 17.28
24)	2.40 X 2.65 X 2	= 6.36
25)	2.65 X 1.80 X 2	= 9.54
26)	2.65 X 1.90 X 1	= 5.04
27)	2.65 X 2.60 X 1	= 6.89
28)	3.68 X 6.20 X 1	= 22.82
29)	3.60 X 0.55 X 1	= 1.98

TOTAL DEDUCTIONS = 489.00 SQ.M.

BUILT UP AREA OF FIRST FLOOR = 902.75 SQ.M.

AREA OF BLOCK EFGH - TOTAL DEDUCTIONS = 1391.75 - 489.00 = 902.75 SQ.M.

SHRI HANSHU LITANI & ASSOCIATES  
 STRUCTURAL ENGINEER

SHRI SANKAR KOTHAWALE  
 ARCHITECT

OWNER: MRS. S. DEVI  
 PROJECT: PROPOSED ALLOCATION & SUBDIVISION FOR RESIDENTIAL COMMERCIAL & HOSPITALS  
 AT SHIRUR, NASHIK

DATE: 01/03/2021  
 SHEET NO.: 01  
 CHECKED BY: AVI

TITLE: MUNICIPAL DRAWING  
 JOB NO.: F211  
 CONSULTING ARCHITECT:  
 AVINASH KOTHAWALE  
 OFF: BAMBAYA BUNGLOW,  
 201-2 SUCCESS SQUARE,  
 NASHIK-2  
 PHONE: +91 2228 10091782

SCALE: 1/50

**FIRST FLOOR (RESIDENTIAL)**  
 AREA CALCULATION  
 AREA OF BLOCK EFGH = 51.55 X 25.49 = 1314.01 SQ.M.

A) STANDARD DEDUCTIONS

1)	0.63 X 7.00 X 1	= 4.41
2)	7.60 X 1.70 X 2	= 25.84
3)	2.95 X 0.54 X 2	= 3.19
4)	3.03 X 5.96 X 2	= 36.12
5)	5.63 X 4.80 X 2	= 54.05
6)	9.40 X 1.70 X 2	= 31.96
7)	5.05 X 1.70 X 2	= 17.17
8)	1.35 X 4.55 X 2	= 12.29
9)	2.45 X 6.29 X 1	= 15.41
10)	1.90 X 6.29 X 1	= 11.95
11)	1.90 X 1.90 X 2	= 7.22
12)	2.20 X 2.00 X 2	= 8.80
13)	1.90 X 2.60 X 2	= 9.88
14)	1.80 X 4.32 X 2	= 16.42
15)	1.80 X 2.55 X 1	= 4.59

TOTAL DEDUCTIONS = 489.00 SQ.M.

BUILT UP AREA OF FIRST FLOOR = 825.01 SQ.M.

AREA OF BLOCK EFGH - TOTAL DEDUCTIONS = 1314.01 - 489.00 = 825.01 SQ.M.

**FIRST FLOOR (COMMERCIAL)**  
 AREA CALCULATION  
 AREA OF BLOCK ABCD = 21.98 X 25.49 = 560.27 SQ.M.

A) STANDARD DEDUCTIONS

1)	4.36 X 1.70 X 2	= 14.82
2)	11.80 X 25.49	= 300.78
3)	3.53 X 2.65	= 9.35
4)	2.65 X 1.80 X 2	= 9.54
5)	2.65 X 1.90 X 2	= 10.04
6)	2.65 X 2.60	= 6.89
7)	0.63 X 8.90	= 5.61
8)	2.45 X 4.90	= 12.01
9)	3.38 X 0.55	= 1.86

TOTAL DEDUCTIONS = 365.90 SQ.M.

BUILT UP AREA OF FIRST FLOOR = 194.37 SQ.M.

AREA OF BLOCK ABCD - TOTAL DEDUCTIONS = 560.27 - 365.90 = 194.37 SQ.M.

**FIRST FLOOR (RESIDENTIAL)**  
 AREA CALCULATION  
 AREA OF BLOCK EFGH = 51.55 X 25.49 = 1314.01 SQ.M.

A) STANDARD DEDUCTIONS

16)	3.00 X 5.59 X 2	= 33.54
17)	4.85 X 2.85 X 1	= 13.82
18)	8.35 X 4.82 X 2	= 80.49
19)	2.20 X 4.60 X 2	= 20.24
20)	4.00 X 2.55 X 1	= 10.20
21)	3.60 X 12.49 X 1	= 44.96
22)	1.90 X 2.55 X 1	= 4.84
23)	2.00 X 4.32 X 2	= 17.28
24)	2.40 X 2.65 X 2	= 6.36
25)	2.65 X 1.80 X 2	= 9.54
26)	2.65 X 1.90 X 1	= 5.04
27)	2.65 X 2.60 X 1	= 6.89
28)	3.68 X 6.20 X 1	= 22.82
29)	3.60 X 0.55 X 1	= 1.98

TOTAL DEDUCTIONS = 489.00 SQ.M.

BUILT UP AREA OF FIRST FLOOR = 825.01 SQ.M.

AREA OF BLOCK EFGH - TOTAL DEDUCTIONS = 1314.01 - 489.00 = 825.01 SQ.M.

**FIRST FLOOR (COMMERCIAL)**  
 AREA CALCULATION  
 AREA OF BLOCK ABCD = 21.98 X 25.49 = 560.27 SQ.M.

A) STANDARD DEDUCTIONS

1)	4.36 X 1.70 X 2	= 14.82
2)	11.80 X 25.49	= 300.78
3)	3.53 X 2.65	= 9.35
4)	2.65 X 1.80 X 2	= 9.54
5)	2.65 X 1.90 X 2	= 10.04
6)	2.65 X 2.60	= 6.89
7)	0.63 X 8.90	= 5.61
8)	2.45 X 4.90	= 12.01
9)	3.38 X 0.55	= 1.86

TOTAL DEDUCTIONS = 365.90 SQ.M.

BUILT UP AREA OF FIRST FLOOR = 194.37 SQ.M.

AREA OF BLOCK ABCD - TOTAL DEDUCTIONS = 560.27 - 365.90 = 194.37 SQ.M.

**FIRST FLOOR (RESIDENTIAL)**  
 AREA CALCULATION  
 AREA OF BLOCK EFGH = 51.55 X 25.49 = 1314.01 SQ.M.

A) STANDARD DEDUCTIONS

16)	3.00 X 5.59 X 2	= 33.54
17)	4.85 X 2.85 X 1	= 13.82
18)	8.35 X 4.82 X 2	= 80.49
19)	2.20 X 4.60 X 2	= 20.24
20)	4.00 X 2.55 X 1	= 10.20
21)	3.60 X 12.49 X 1	= 44.96
22)	1.90 X 2.55 X 1	= 4.84
23)	2.00 X 4.32 X 2	= 17.28
24)	2.40 X 2.65 X 2	= 6.36
25)	2.65 X 1.80 X 2	= 9.54
26)	2.65 X 1.90 X 1	= 5.04
27)	2.65 X 2.60 X 1	= 6.89
28)	3.68 X 6.20 X 1	= 22.82
29)	3.60 X 0.55 X 1	= 1.98

TOTAL DEDUCTIONS = 489.00 SQ.M.

BUILT UP AREA OF FIRST FLOOR = 825.01 SQ.M.

AREA OF BLOCK EFGH - TOTAL DEDUCTIONS = 1314.01 - 489.00 = 825.01 SQ.M.

**FIRST FLOOR (COMMERCIAL)**  
 AREA CALCULATION  
 AREA OF BLOCK ABCD = 21.98 X 25.49 = 560.27 SQ.M.

A) STANDARD DEDUCTIONS

1)	4.36 X 1.70 X 2	= 14.82
2)	11.80 X 25.49	= 300.78
3)	3.53 X 2.65	= 9.35
4)	2.65 X 1.80 X 2	= 9.54
5)	2.65 X 1.90 X 2	= 10.04
6)	2.65 X 2.60	= 6.89
7)	0.63 X 8.90	= 5.61
8)	2.45 X 4.90	= 12.01
9)	3.38 X 0.55	= 1.86

TOTAL DEDUCTIONS = 365.90 SQ.M.

BUILT UP AREA OF FIRST FLOOR = 194.37 SQ.M.

AREA OF BLOCK ABCD - TOTAL DEDUCTIONS