

SHANKAR PARAJI AVHAD

Digitally signed by SHANKAR PARAJI AVHAD... Date: 2023.11.07 16:31:17 +05'30'

Asmeeta Infratech Ltd FSI STATEMENT 1.5 FSI Table with columns: Descriptions, Area in Sq.m.

LAND-USE AREA STATEMENT Table with columns: SR.NO., DESCRIPTION, %, PLOT AREA IN SQ. MT.

AMINITIES AREA STATEMENT Table with columns: SR.NO., DESCRIPTION, PLOT AREA IN SQ. MT., No of Floors, BUA (Sq.Mt.)

OPEN SPACE AREA STATEMENT Table with columns: SR.NO., LEGEND, AREA IN SQ. M.

INDUSTRIAL AREA STATEMENT Table with columns: SR.NO., LEGEND, Percentage, AREA IN SQ. M.

TEXTILE UNITS AND INDUSTRIAL ESTATE BUILDINGS AREA STATEMENT FOR ADDITIONAL AREA Table with columns: SR.NO., BLOCK NO., Area, BCC BUA, APPROVED AREA, CANCELLED AREA FROM APPROVED, PROPOSED AREA, NO. OF FLOORS



LEGEND: EXISTING CONSTRUCTION (blue hatched), PROPOSED CONSTRUCTION (red hatched), AMENITY PLOT (orange), OPEN SPACE (green)

MASTER LAYOUT NORTH

Project details table including DRAWING TITLE (MASTER PLAN LAYOUT - B2/1, B2/2), OWNER SIGNATURE (ASMEETA INFRATECH LTD.), ARCHITECT SIGNATURE, PROJECT (PROPOSED TEXTILE PARK AT PLOT-1, ADDL. KALYAN BHIWANDI INDUSTRIAL AREA, VILLAGE KONE, TALUKA-BHIWANDI, DISTRICT-THANE), ARCHITECT (MAGUS INNOVATIONS DELIVERED Magus Consulting Pvt. Ltd.), JOB NO. (04), SCALE, DRAWN BY (IAK), CHECKED BY (SG), DATE (01-11-2023), DRG. NO. (MCPL/ASM/MP/SPA/01 (B2/1, B2/2))

Table with columns: JOB NO., SCALE, DRAWN BY, CHECKED BY, DATE, NORTH







**SHANKAR PARAJI AVHAD**  
Digitally signed by SHANKAR PARAJI AVHAD  
DN: cn=SHANKAR PARAJI AVHAD, o=SHANKAR PARAJI AVHAD, email=shankarparaji@rediffmail.com, postalCode=410210, serialNumber=03048144e978a640f19307699901969c3622f2e0a6477299395, c=INDIA

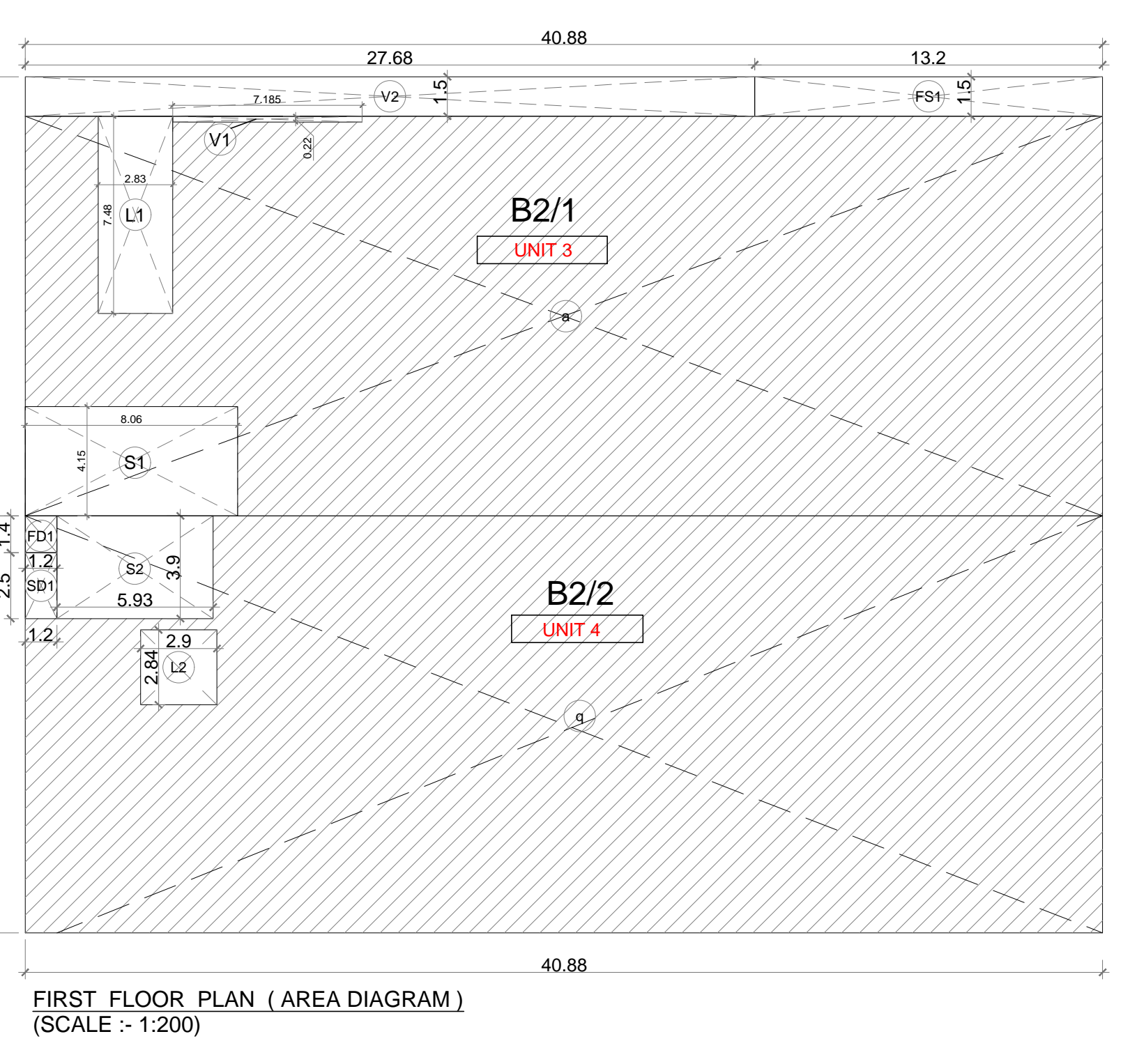
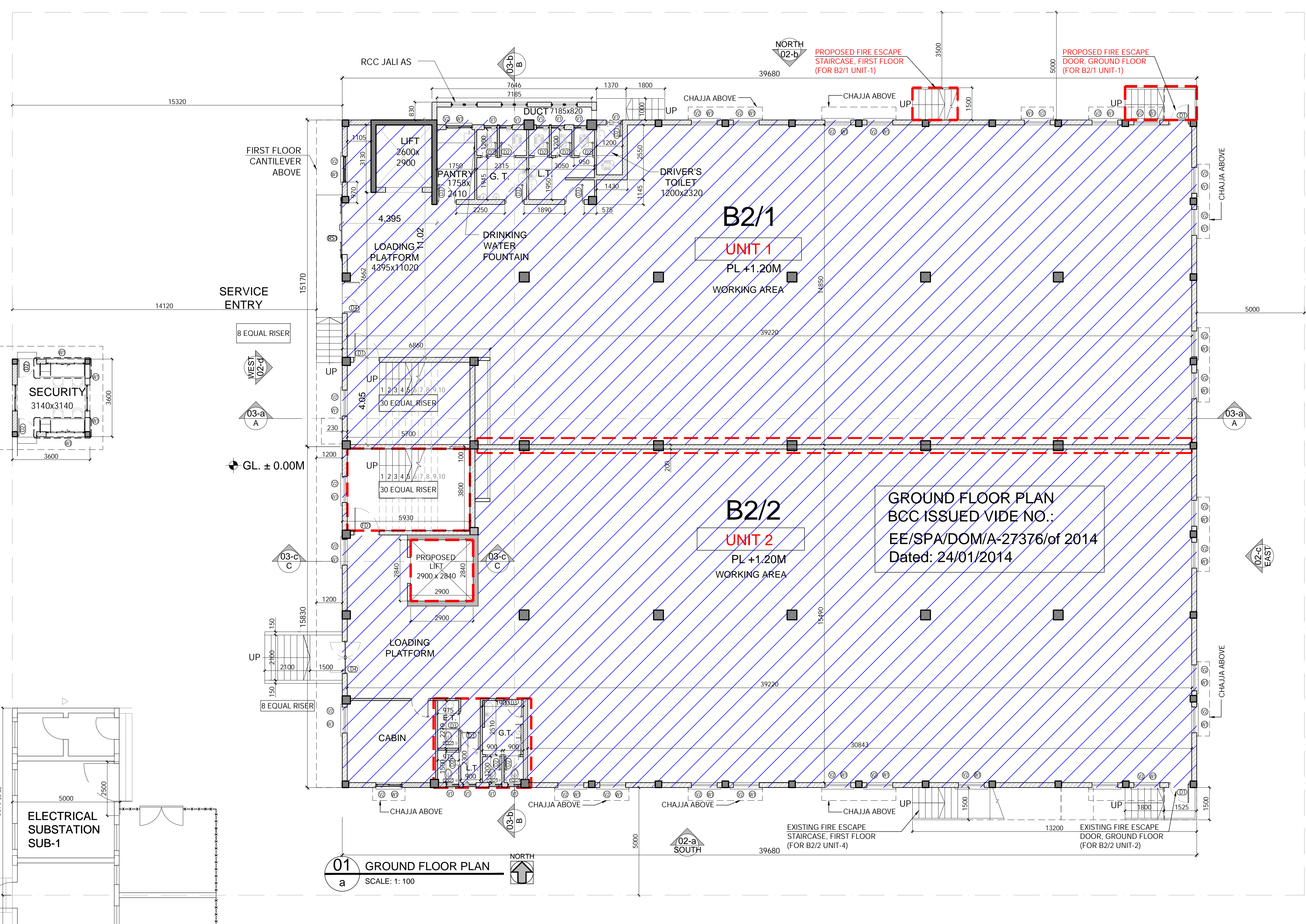
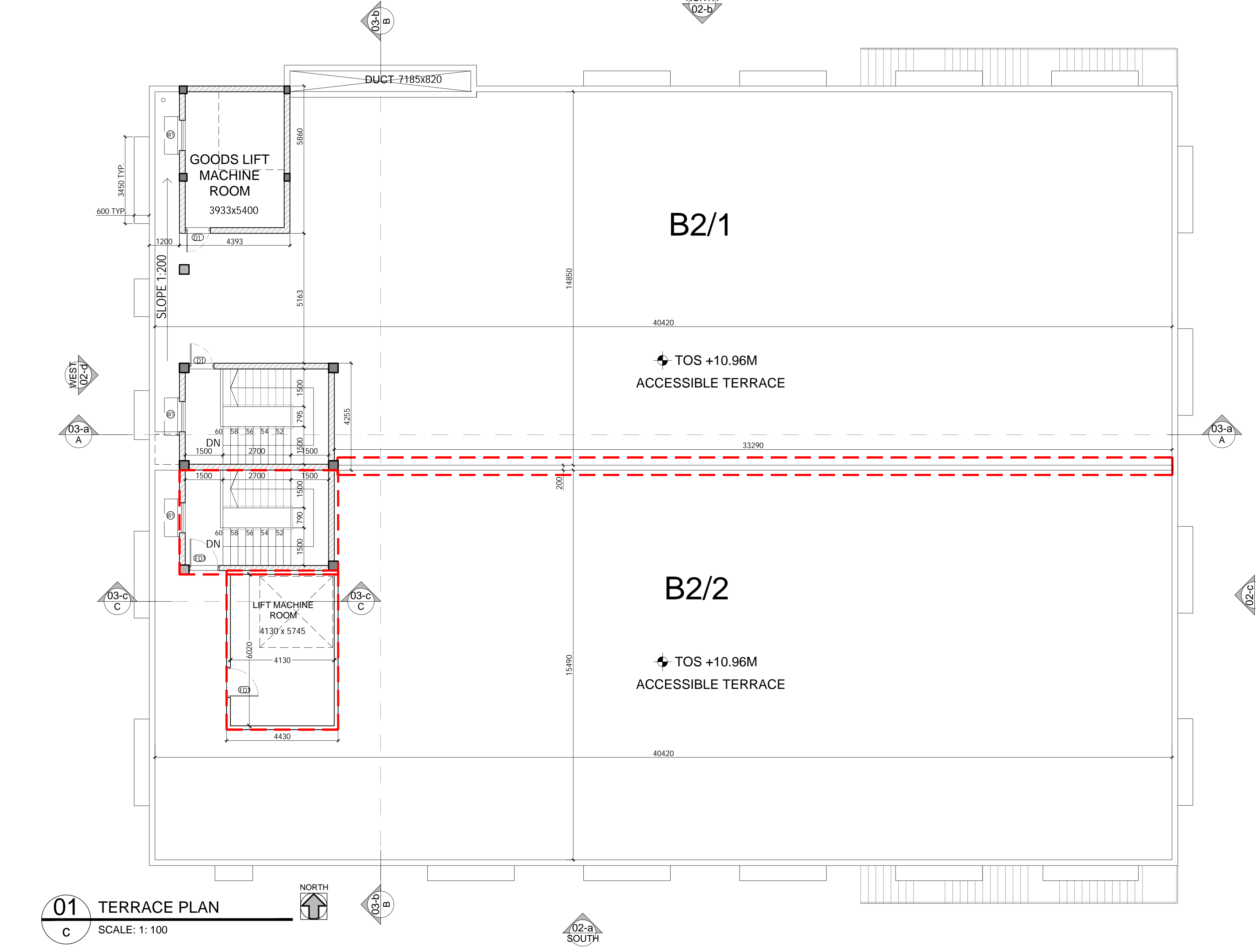
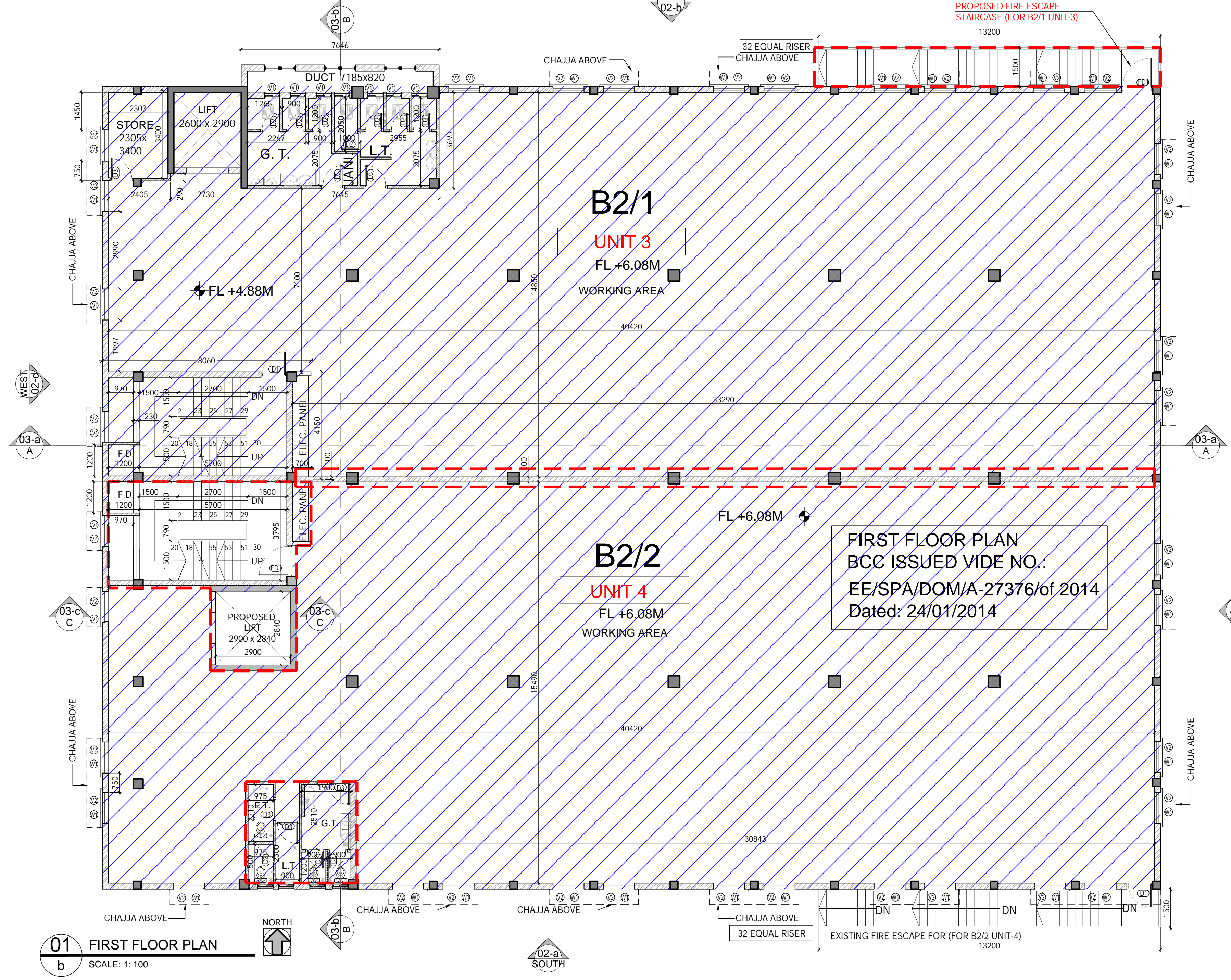
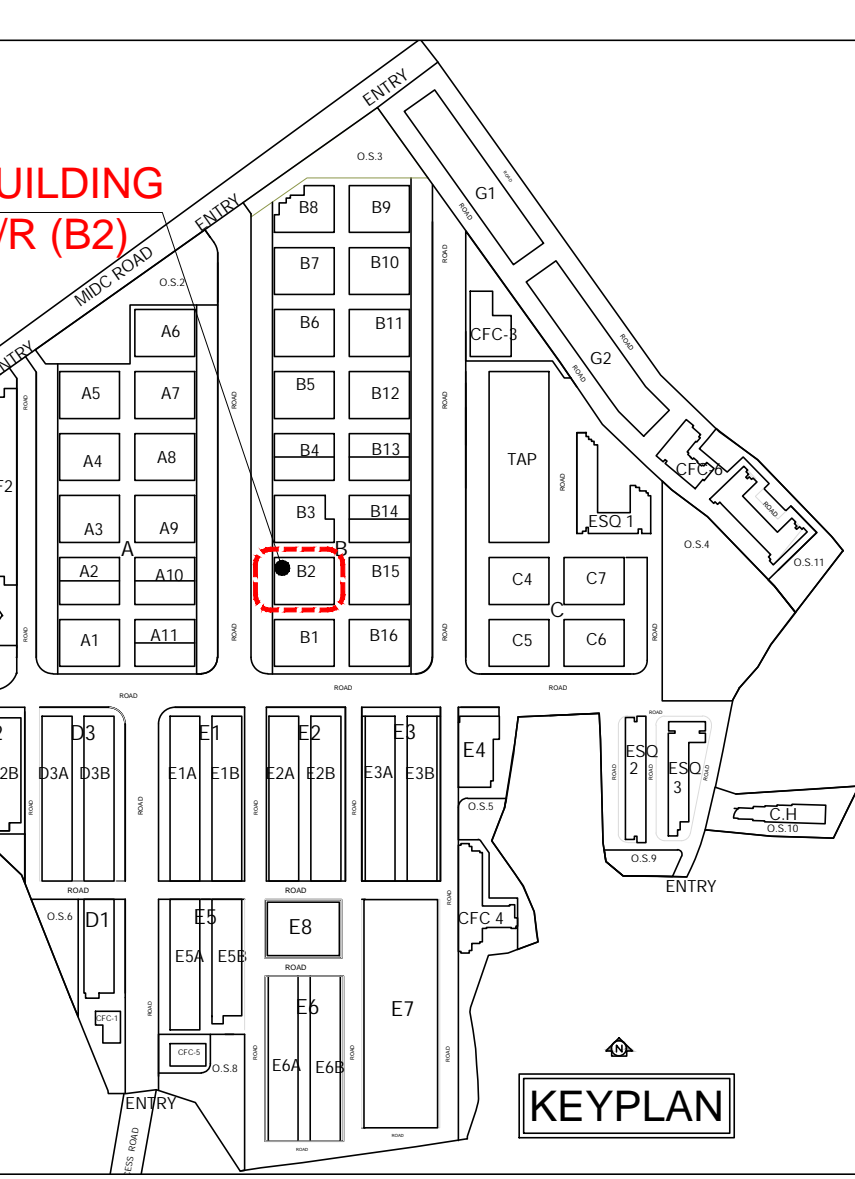
**LEGEND:**  
 PROPOSED  
 APPROVED

**SCHEDULE OF DOORS**

S. No.	DOOR TYPE	WIDTH	HEIGHT	DESCRIPTIONS
1	DOOR	900	2100	DOOR FRAME OF SECOND FLOOR WINDOW/DOOR/ALCOVE
2	DOOR	900	2100	DOOR FRAME OF SECOND FLOOR WINDOW/DOOR/ALCOVE
3	DOOR	900	2100	DOOR FRAME OF SECOND FLOOR WINDOW/DOOR/ALCOVE
4	DOOR	900	2100	DOOR FRAME OF SECOND FLOOR WINDOW/DOOR/ALCOVE
5	DOOR	900	2100	DOOR FRAME OF SECOND FLOOR WINDOW/DOOR/ALCOVE
6	DOOR	900	2100	DOOR FRAME OF SECOND FLOOR WINDOW/DOOR/ALCOVE
7	DOOR	900	2100	DOOR FRAME OF SECOND FLOOR WINDOW/DOOR/ALCOVE
8	DOOR	900	2100	DOOR FRAME OF SECOND FLOOR WINDOW/DOOR/ALCOVE
9	DOOR	900	2100	DOOR FRAME OF SECOND FLOOR WINDOW/DOOR/ALCOVE
10	DOOR	900	2100	DOOR FRAME OF SECOND FLOOR WINDOW/DOOR/ALCOVE
11	DOOR	900	2100	DOOR FRAME OF SECOND FLOOR WINDOW/DOOR/ALCOVE
12	DOOR	900	2100	DOOR FRAME OF SECOND FLOOR WINDOW/DOOR/ALCOVE
13	DOOR	900	2100	DOOR FRAME OF SECOND FLOOR WINDOW/DOOR/ALCOVE
14	DOOR	900	2100	DOOR FRAME OF SECOND FLOOR WINDOW/DOOR/ALCOVE
15	DOOR	900	2100	DOOR FRAME OF SECOND FLOOR WINDOW/DOOR/ALCOVE
16	DOOR	900	2100	DOOR FRAME OF SECOND FLOOR WINDOW/DOOR/ALCOVE
17	DOOR	900	2100	DOOR FRAME OF SECOND FLOOR WINDOW/DOOR/ALCOVE
18	DOOR	900	2100	DOOR FRAME OF SECOND FLOOR WINDOW/DOOR/ALCOVE
19	DOOR	900	2100	DOOR FRAME OF SECOND FLOOR WINDOW/DOOR/ALCOVE
20	DOOR	900	2100	DOOR FRAME OF SECOND FLOOR WINDOW/DOOR/ALCOVE
21	DOOR	900	2100	DOOR FRAME OF SECOND FLOOR WINDOW/DOOR/ALCOVE
22	DOOR	900	2100	DOOR FRAME OF SECOND FLOOR WINDOW/DOOR/ALCOVE
23	DOOR	900	2100	DOOR FRAME OF SECOND FLOOR WINDOW/DOOR/ALCOVE
24	DOOR	900	2100	DOOR FRAME OF SECOND FLOOR WINDOW/DOOR/ALCOVE
25	DOOR	900	2100	DOOR FRAME OF SECOND FLOOR WINDOW/DOOR/ALCOVE
26	DOOR	900	2100	DOOR FRAME OF SECOND FLOOR WINDOW/DOOR/ALCOVE
27	DOOR	900	2100	DOOR FRAME OF SECOND FLOOR WINDOW/DOOR/ALCOVE
28	DOOR	900	2100	DOOR FRAME OF SECOND FLOOR WINDOW/DOOR/ALCOVE
29	DOOR	900	2100	DOOR FRAME OF SECOND FLOOR WINDOW/DOOR/ALCOVE
30	DOOR	900	2100	DOOR FRAME OF SECOND FLOOR WINDOW/DOOR/ALCOVE
31	DOOR	900	2100	DOOR FRAME OF SECOND FLOOR WINDOW/DOOR/ALCOVE
32	DOOR	900	2100	DOOR FRAME OF SECOND FLOOR WINDOW/DOOR/ALCOVE
33	DOOR	900	2100	DOOR FRAME OF SECOND FLOOR WINDOW/DOOR/ALCOVE
34	DOOR	900	2100	DOOR FRAME OF SECOND FLOOR WINDOW/DOOR/ALCOVE
35	DOOR	900	2100	DOOR FRAME OF SECOND FLOOR WINDOW/DOOR/ALCOVE
36	DOOR	900	2100	DOOR FRAME OF SECOND FLOOR WINDOW/DOOR/ALCOVE
37	DOOR	900	2100	DOOR FRAME OF SECOND FLOOR WINDOW/DOOR/ALCOVE
38	DOOR	900	2100	DOOR FRAME OF SECOND FLOOR WINDOW/DOOR/ALCOVE
39	DOOR	900	2100	DOOR FRAME OF SECOND FLOOR WINDOW/DOOR/ALCOVE
40	DOOR	900	2100	DOOR FRAME OF SECOND FLOOR WINDOW/DOOR/ALCOVE
41	DOOR	900	2100	DOOR FRAME OF SECOND FLOOR WINDOW/DOOR/ALCOVE
42	DOOR	900	2100	DOOR FRAME OF SECOND FLOOR WINDOW/DOOR/ALCOVE
43	DOOR	900	2100	DOOR FRAME OF SECOND FLOOR WINDOW/DOOR/ALCOVE
44	DOOR	900	2100	DOOR FRAME OF SECOND FLOOR WINDOW/DOOR/ALCOVE
45	DOOR	900	2100	DOOR FRAME OF SECOND FLOOR WINDOW/DOOR/ALCOVE
46	DOOR	900	2100	DOOR FRAME OF SECOND FLOOR WINDOW/DOOR/ALCOVE
47	DOOR	900	2100	DOOR FRAME OF SECOND FLOOR WINDOW/DOOR/ALCOVE
48	DOOR	900	2100	DOOR FRAME OF SECOND FLOOR WINDOW/DOOR/ALCOVE
49	DOOR	900	2100	DOOR FRAME OF SECOND FLOOR WINDOW/DOOR/ALCOVE
50	DOOR	900	2100	DOOR FRAME OF SECOND FLOOR WINDOW/DOOR/ALCOVE

**SCHEDULE OF WINDOWS**

S. No.	WINDOW TYPE	WIDTH	HEIGHT	DESCRIPTIONS
1	WINDOW	1500	1500	ALUMINIUM FRAMED GLAZED SLIDING WINDOW
2	WINDOW	1500	1500	ALUMINIUM FRAMED GLAZED SLIDING WINDOW
3	WINDOW	1500	1500	ALUMINIUM FRAMED GLAZED SLIDING WINDOW
4	WINDOW	1500	1500	ALUMINIUM FRAMED GLAZED SLIDING WINDOW
5	WINDOW	1500	1500	ALUMINIUM FRAMED GLAZED SLIDING WINDOW
6	WINDOW	1500	1500	ALUMINIUM FRAMED GLAZED SLIDING WINDOW
7	WINDOW	1500	1500	ALUMINIUM FRAMED GLAZED SLIDING WINDOW
8	WINDOW	1500	1500	ALUMINIUM FRAMED GLAZED SLIDING WINDOW
9	WINDOW	1500	1500	ALUMINIUM FRAMED GLAZED SLIDING WINDOW
10	WINDOW	1500	1500	ALUMINIUM FRAMED GLAZED SLIDING WINDOW
11	WINDOW	1500	1500	ALUMINIUM FRAMED GLAZED SLIDING WINDOW
12	WINDOW	1500	1500	ALUMINIUM FRAMED GLAZED SLIDING WINDOW
13	WINDOW	1500	1500	ALUMINIUM FRAMED GLAZED SLIDING WINDOW
14	WINDOW	1500	1500	ALUMINIUM FRAMED GLAZED SLIDING WINDOW
15	WINDOW	1500	1500	ALUMINIUM FRAMED GLAZED SLIDING WINDOW
16	WINDOW	1500	1500	ALUMINIUM FRAMED GLAZED SLIDING WINDOW
17	WINDOW	1500	1500	ALUMINIUM FRAMED GLAZED SLIDING WINDOW
18	WINDOW	1500	1500	ALUMINIUM FRAMED GLAZED SLIDING WINDOW
19	WINDOW	1500	1500	ALUMINIUM FRAMED GLAZED SLIDING WINDOW
20	WINDOW	1500	1500	ALUMINIUM FRAMED GLAZED SLIDING WINDOW
21	WINDOW	1500	1500	ALUMINIUM FRAMED GLAZED SLIDING WINDOW
22	WINDOW	1500	1500	ALUMINIUM FRAMED GLAZED SLIDING WINDOW
23	WINDOW	1500	1500	ALUMINIUM FRAMED GLAZED SLIDING WINDOW
24	WINDOW	1500	1500	ALUMINIUM FRAMED GLAZED SLIDING WINDOW
25	WINDOW	1500	1500	ALUMINIUM FRAMED GLAZED SLIDING WINDOW
26	WINDOW	1500	1500	ALUMINIUM FRAMED GLAZED SLIDING WINDOW
27	WINDOW	1500	1500	ALUMINIUM FRAMED GLAZED SLIDING WINDOW
28	WINDOW	1500	1500	ALUMINIUM FRAMED GLAZED SLIDING WINDOW
29	WINDOW	1500	1500	ALUMINIUM FRAMED GLAZED SLIDING WINDOW
30	WINDOW	1500	1500	ALUMINIUM FRAMED GLAZED SLIDING WINDOW
31	WINDOW	1500	1500	ALUMINIUM FRAMED GLAZED SLIDING WINDOW
32	WINDOW	1500	1500	ALUMINIUM FRAMED GLAZED SLIDING WINDOW
33	WINDOW	1500	1500	ALUMINIUM FRAMED GLAZED SLIDING WINDOW
34	WINDOW	1500	1500	ALUMINIUM FRAMED GLAZED SLIDING WINDOW
35	WINDOW	1500	1500	ALUMINIUM FRAMED GLAZED SLIDING WINDOW
36	WINDOW	1500	1500	ALUMINIUM FRAMED GLAZED SLIDING WINDOW
37	WINDOW	1500	1500	ALUMINIUM FRAMED GLAZED SLIDING WINDOW
38	WINDOW	1500	1500	ALUMINIUM FRAMED GLAZED SLIDING WINDOW
39	WINDOW	1500	1500	ALUMINIUM FRAMED GLAZED SLIDING WINDOW
40	WINDOW	1500	1500	ALUMINIUM FRAMED GLAZED SLIDING WINDOW
41	WINDOW	1500	1500	ALUMINIUM FRAMED GLAZED SLIDING WINDOW
42	WINDOW	1500	1500	ALUMINIUM FRAMED GLAZED SLIDING WINDOW
43	WINDOW	1500	1500	ALUMINIUM FRAMED GLAZED SLIDING WINDOW
44	WINDOW	1500	1500	ALUMINIUM FRAMED GLAZED SLIDING WINDOW
45	WINDOW	1500	1500	ALUMINIUM FRAMED GLAZED SLIDING WINDOW
46	WINDOW	1500	1500	ALUMINIUM FRAMED GLAZED SLIDING WINDOW
47	WINDOW	1500	1500	ALUMINIUM FRAMED GLAZED SLIDING WINDOW
48	WINDOW	1500	1500	ALUMINIUM FRAMED GLAZED SLIDING WINDOW
49	WINDOW	1500	1500	ALUMINIUM FRAMED GLAZED SLIDING WINDOW
50	WINDOW	1500	1500	ALUMINIUM FRAMED GLAZED SLIDING WINDOW



**FIRST FLOOR PLAN B2/1 (UNIT-3)**

S.No.	No.	Length in m.	Width in m.	Area in sq.m.
a	AREA BLOCK -b	40.88	18.67	681.470
1	VOIDS			
V1	1	7.185	0.206	1.480
V2	1	27.680	1.90	41.520
2	LIFT LOBBY			
L1	1	2.900	2.600	7.540
3	STAIRCASE			
S1	1	5.930	4.650	27.575
b	TOTAL DEDUCTION			67.275
c	TOTAL FSI AREA OF 1ST FLOOR (a-b)			614.195
d	5% PERMISSIBLE FIRE AREA OF THE FLR AREA			30.710
4	FIRE ESCAPE STAIRCASE			
FS1	1	13.200	1.900	19.800
e	FREE AREA ACTUAL (AS PER FS1)			19.800
5	FIRE AREA TO BE COUNTED INTO FSI (d+e)			0.000
f	10% PERMISSIBLE PASSAGES OF FLR AREA			23.220
g	FREE AREA ACTUAL			0.000
h	10% AREA TO BE COUNTED INTO FSI			0.000
i	TOTAL FSI AREA OF 1ST FLOOR (c+h)			594.400

**FIRST FLOOR PLAN B2/2 (UNIT-4)**

S.No.	No.	Length in m.	Width in m.	Area in sq.m.
a	AREA BLOCK -b	40.88	15.83	647.130
1	SERVICES DUCTS & FIRE DUCTS			
FD1	1	1.200	1.20	1.440
2	LIFT LOBBY			
L2	1	2.90	2.84	8.236
3	STAIRCASE			
S2	1	5.700	3.900	21.660
b	TOTAL DEDUCTION			31.336
c	TOTAL FSI AREA OF 1ST FLOOR (a-b)			615.794
d	5% PERMISSIBLE FIRE AREA OF THE FLR AREA			30.790
4	FIRE ESCAPE STAIRCASE			
FS2	1	13.200	1.900	19.800
e	FREE AREA ACTUAL (AS PER FS2)			0.000
5	FIRE AREA TO BE COUNTED INTO FSI (d+e)			0.000
f	10% PERMISSIBLE PASSAGES OF FLR AREA			30.790
g	FREE AREA ACTUAL			0.000
h	10% AREA TO BE COUNTED INTO FSI			0.000
i	TOTAL FSI AREA OF 1ST FLOOR (c+h)			615.800

**SUMMARY OF FSI AREA:**

S.No.	TOTAL FSI AREA	APPROVED AREA SQ.MT.	B2/1 PROPOSED AREA SQ.MT.	B2/2 PROPOSED AREA SQ.MT.	TOTAL SQ.MT.
1	GROUND FLOOR: BCC APPROVED	1150.79	565.34	585.44	1150.79
2	FIRST FLOOR: BCC APPROVED	1210.19	594.40	615.90	1210.20
	<b>BCC &amp; APPROVED FSI AREA</b>	<b>2360.98</b>	<b>1159.74</b>	<b>1201.24</b>	<b>2360.98</b>

**FSI AREA STATEMENT - B2/1**

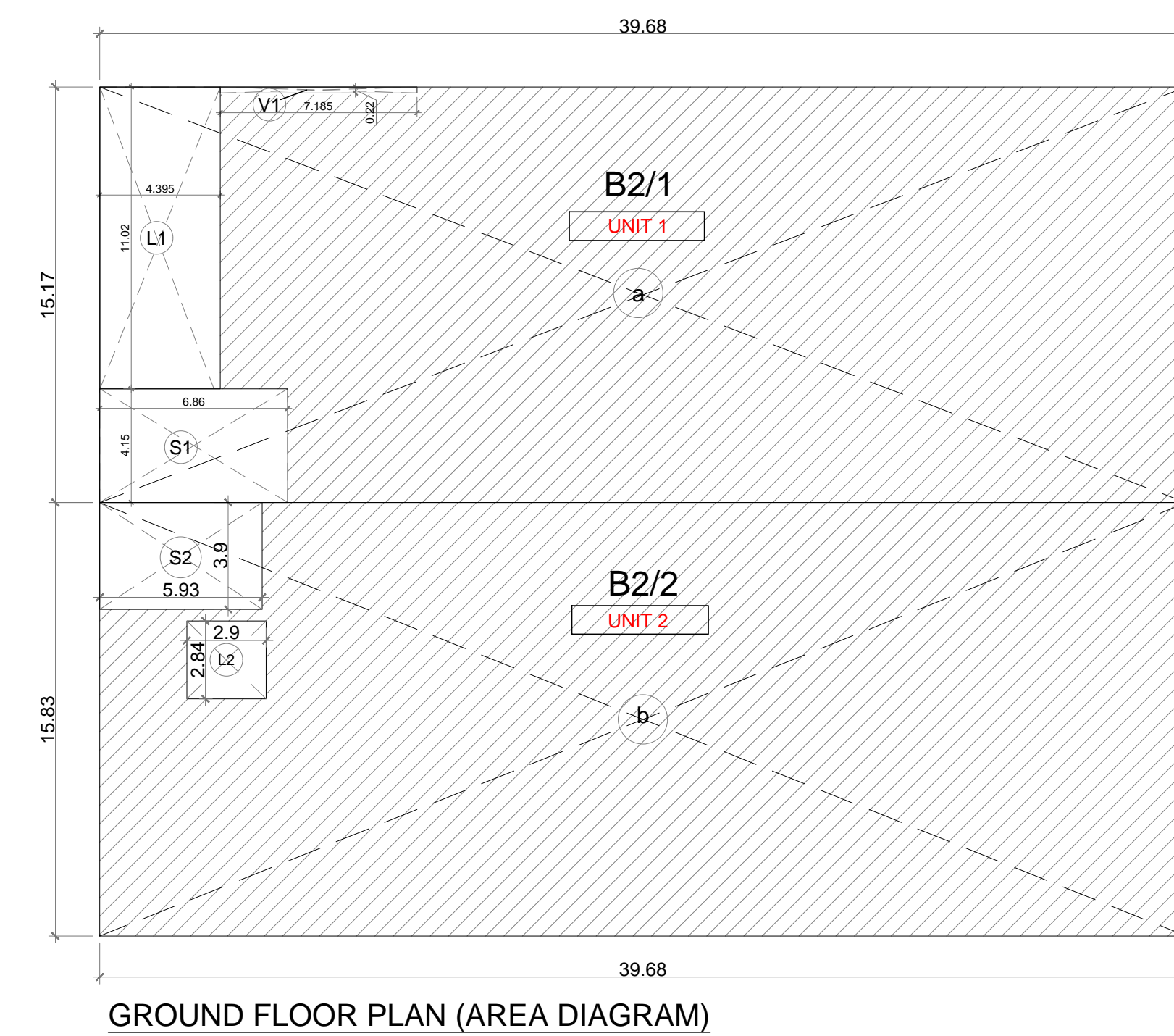
**GROUND FLOOR PLAN B2/1 (UNIT-1)**

S.No.	No.	Length in m.	Width in m.	Area in sq.m.
a	AREA BLOCK -a	39.680	15.170	601.840
1	VOIDS			
V1	1	7.185	0.206	1.480
2	LIFT LOBBY			
L1	2	2.900	2.600	7.540
3	STAIRCASE			
S1	1	5.930	4.650	27.575
b	TOTAL DEDUCTION			36.595
c	TOTAL FSI AREA OF GROUND FLOOR (a-b)			565.340

**FSI AREA STATEMENT - B2/2**

**GROUND FLOOR PLAN B2/2 (UNIT-2)**

S.No.	No.	Length in m.	Width in m.	Area in sq.m.
a	AREA BLOCK -a	39.680	15.830	628.134
1	LIFT LOBBY			
L2	2	2.900	2.840	16.472
2	STAIRCASE			
S2	1	6.900	3.900	26.220
b	TOTAL DEDUCTION			42.692
c	TOTAL FSI AREA OF GROUND FLOOR (a-b)			585.442



**PROPOSED PROJECT OF ASMEETA INFRATECH LTD.**  
AT Plot No. 1, MIDC, Adli, Kalyan-Shivajinagar, Indl. Area, Village Kon. Bhiwandi, Dist.- Thane.

**ASMEETA INFRATECH LTD.**

**MAGUS CONSULTING PVT. LTD.**

**FACTORY BUILDING B2: PROPOSED B2/1 & B2/2 BUILDING APPROVED GROUND & FIRST FLOOR PLANS WITH FSI CALCULATION**

DATE: 23/01/2023



Digitally signed by SHANKAR PARAJI AVHAD  
 DN: c=IN, o=PERSONAL, pseudonym=64f815eb2154a5ebef97d76a1b7ef, 2.5.4.23=615496641772b2fd9145243681847141e46b328e682b175931d2538cb07e6, postalCode=411010, st=Maharashtra, serialNumber=8032b014ee07484640f19367d609001969036222f8d6a6477f3993, email=SHANKAR.PARAJI.AVHAD, Date: 2023.11.07 16:39:36 +05'30'

**SCHEDULE OF DOORS**

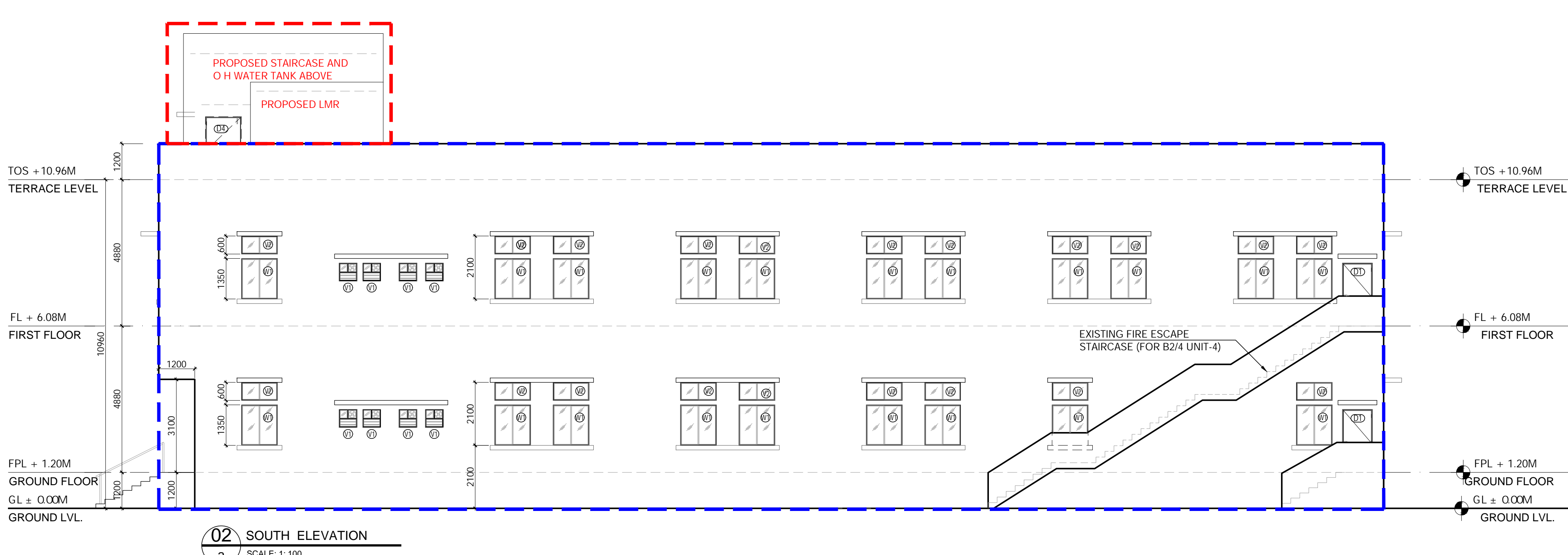
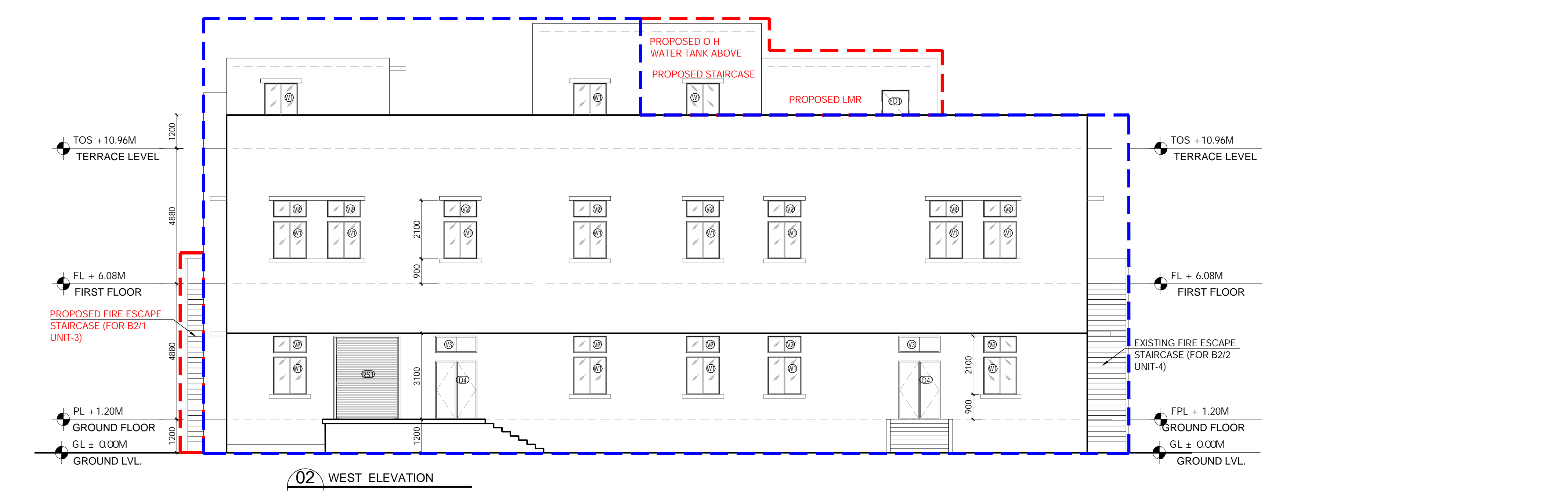
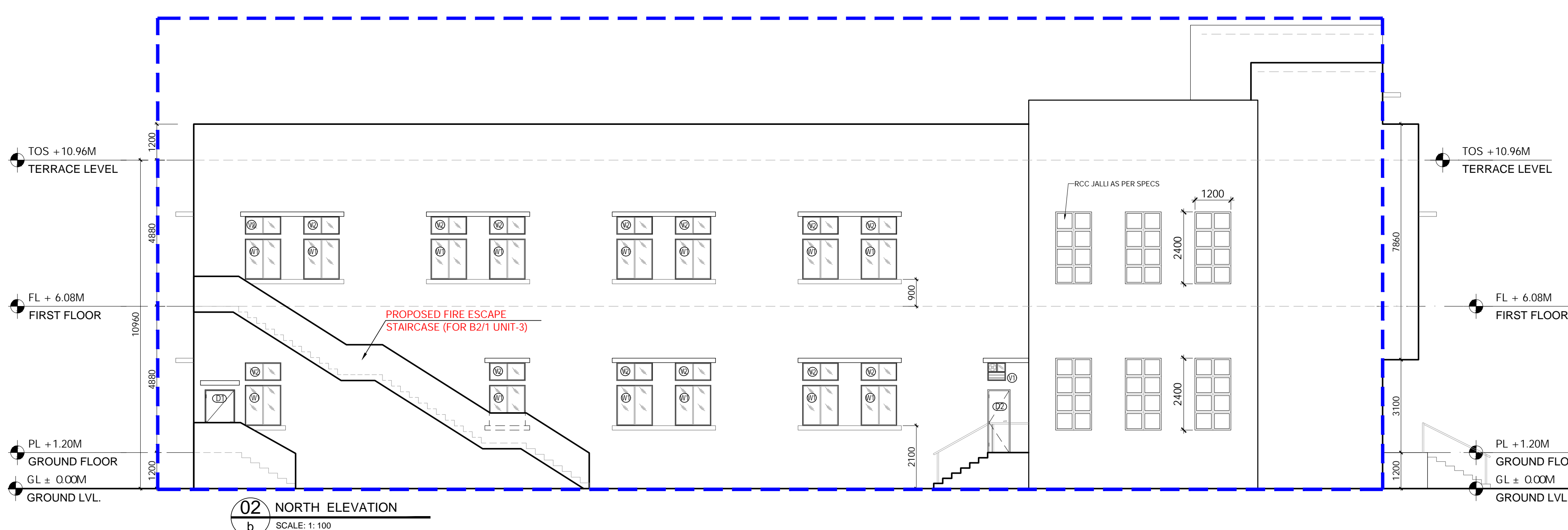
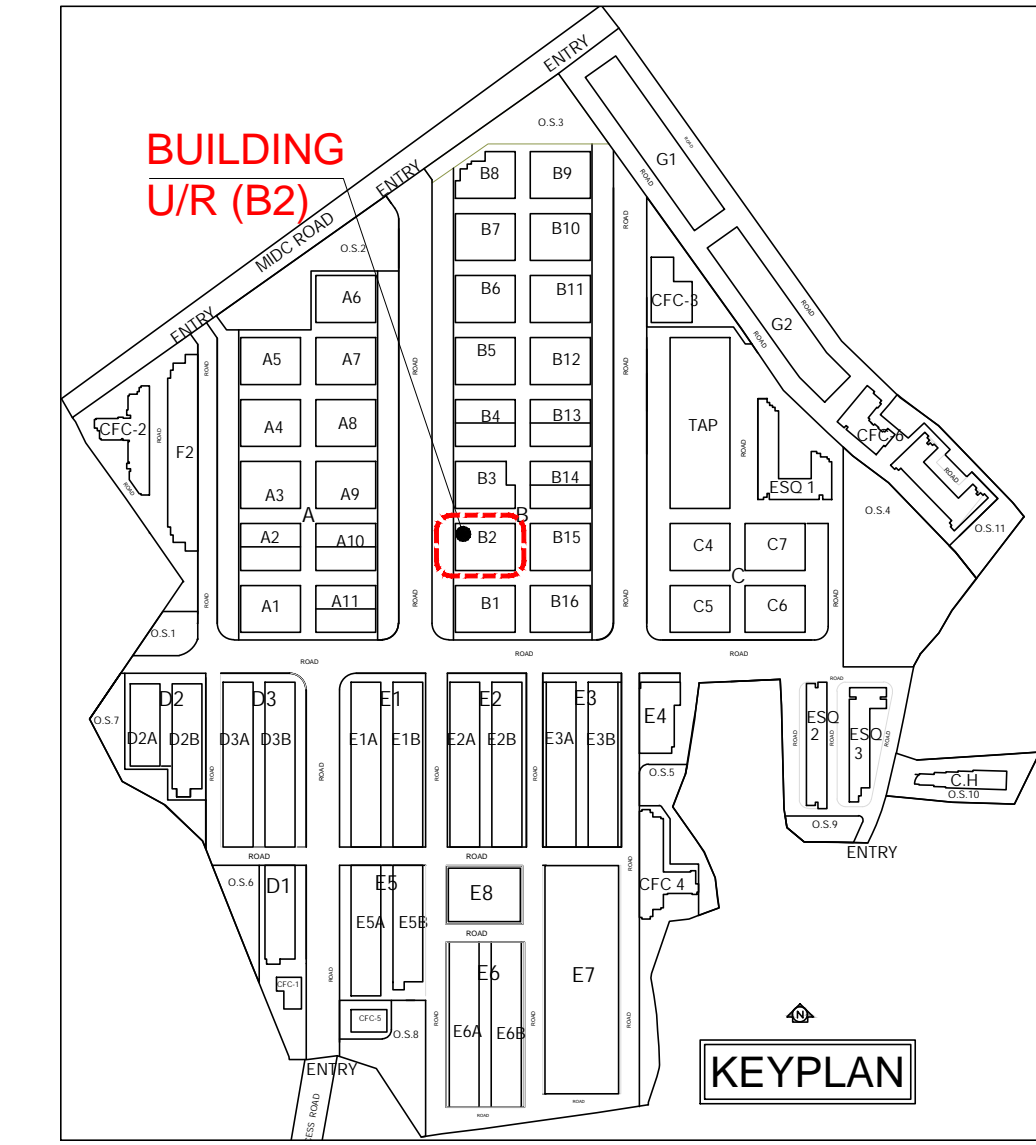
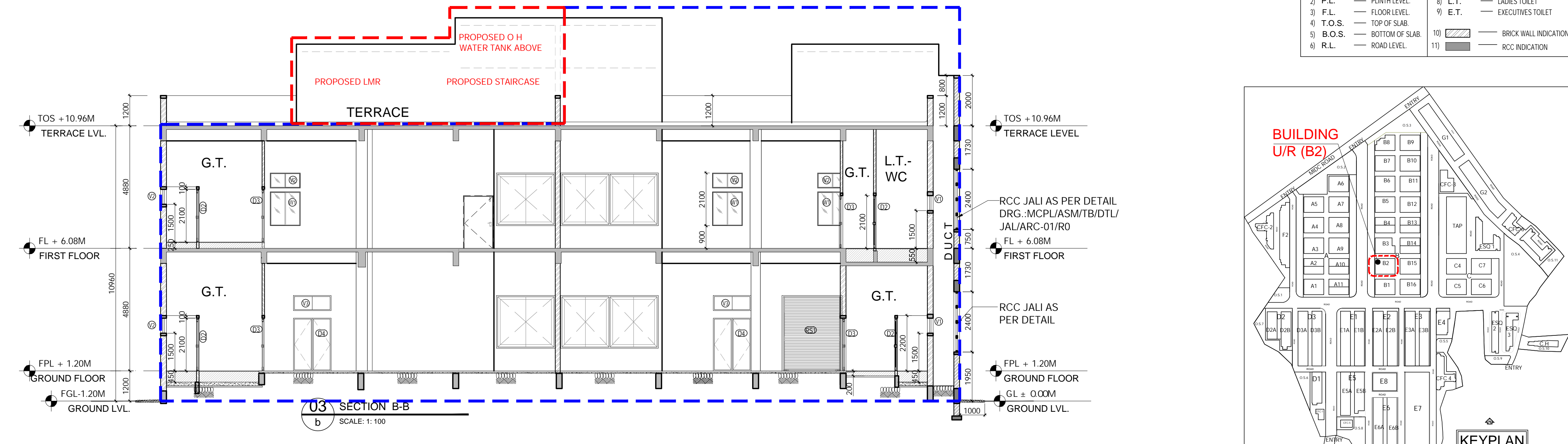
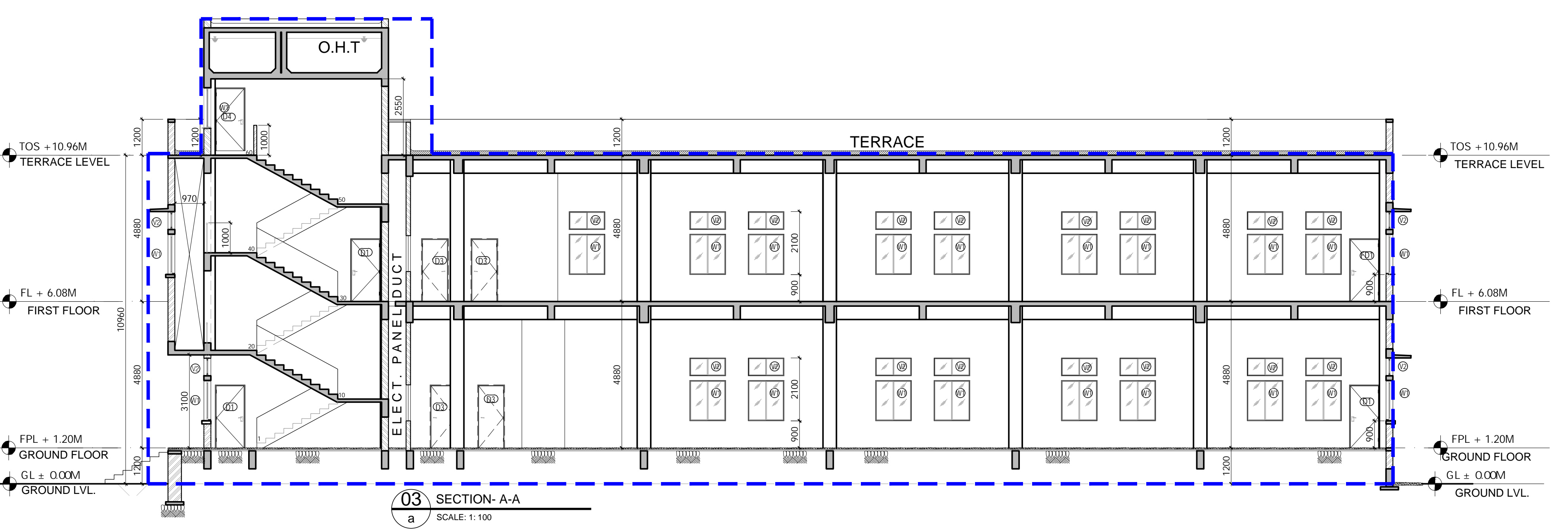
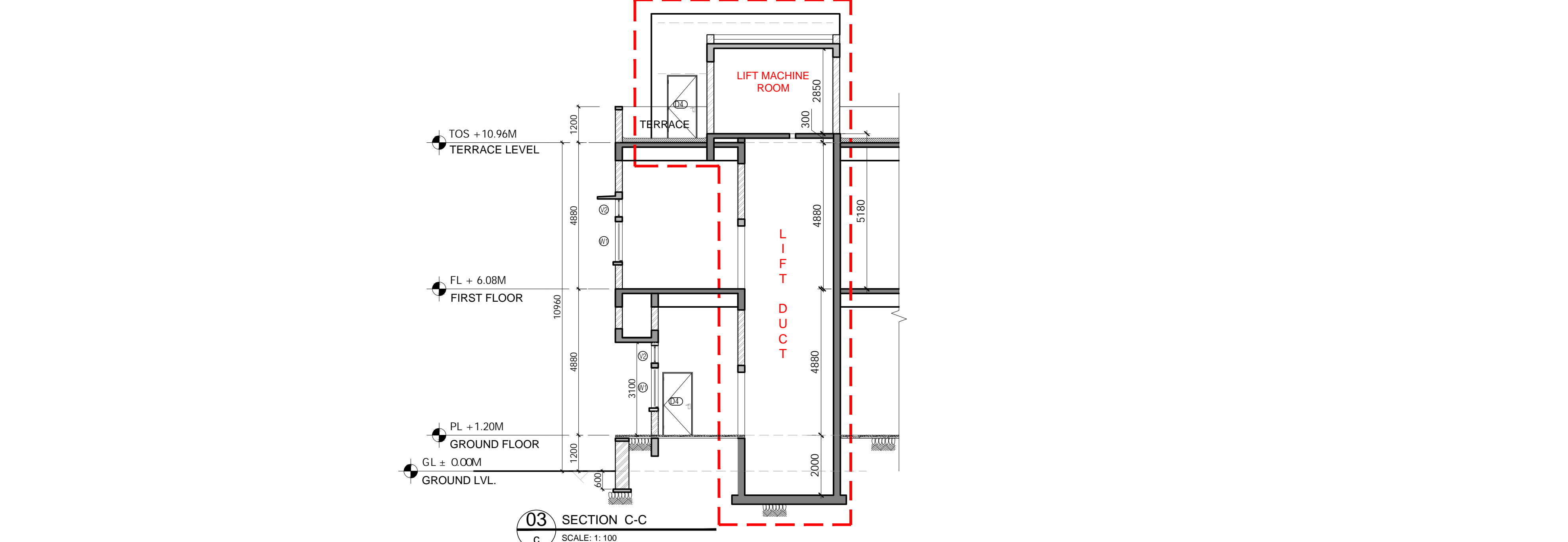
No.	SYMBOL	WIDTH	HEIGHT	DESCRIPTIONS
1	D1	1000	2100	DOOR FRAME OF SECOND CLASS FRAMEDWOOD/ALUMINUM
2	D2	1000	2100	DOOR FRAME OF SECOND CLASS FRAMEDWOOD/ALUMINUM WITH GLASS
3	D3	800	2100	DOOR FRAME OF SECOND CLASS FRAMEDWOOD/ALUMINUM WITH GLASS
4	D4	1000	2100	GLASS DOOR AS PER SPEC
5	F01	1000	2100	FIRE RATED DOOR AS PER SPEC
6	F02	2000	2100	MS ROLLING SHUTTER AS PER SPEC

**SCHEDULE OF WINDOWS**

No.	SYMBOL	WIDTH	HEIGHT	DESCRIPTIONS
1	W1	1000	1500	ALUMINUM FRAMED GLAZED WINDOW
2	W2	1000	1500	ALUMINUM FRAMED GLAZED WINDOW WITH SHUTTER
3	W3	1000	1500	ALUMINUM FRAMED GLAZED WINDOW WITH SHUTTER
4	W4	1000	1500	ALUMINUM FRAMED GLAZED WINDOW

**LEGEND:**

1) G.L.L.	GROUND LEVEL	7) G.T.	GENTS TOILET
2) P.L.	PLUMB LEVEL	8) L.T.	LADIES TOILET
3) F.L.	FLOOR LEVEL	9) E.T.	EXECUTIVES TOILET
4) T.O.S.	TOP OF SLAB	10)	BRICK WALL INDICATION
5) B.O.S.	BOTTOM OF SLAB	11)	RCC INDICATION
6) R.L.	ROAD LEVEL		



**LEGEND:**

[Red dashed line]	PROPOSED
[Blue solid line]	APPROVED

**PROPOSED PROJECT OF ASMEETA INFRA TECH LTD.**  
 AT Plot No. 1, MIDC, Adol. Kalyan-Shiwandi Indl. Area Village Kon. Bhiwandi, Dist.- Thane.

**ASMEETA INFRA TECH LTD.**  
 Plot No. 1, MIDC, Adol. Kalyan-Shiwandi Indl. Area Village Kon. Bhiwandi, Dist.- Thane. T: +91 22 8735 4700 01

**MAGUS CONSULTING PVT. LTD.**  
 Plot No. 1, MIDC, Adol. Kalyan-Shiwandi Indl. Area Village Kon. Bhiwandi, Dist.- Thane. T: +91 22 8735 4700 01

**FACTORY BUILDING B2: PROPOSED B2/1 & B2/2 BUILDING PROPOSED TERRACE FLOOR, EAST, WEST & SOUTH ELEVATIONS & SECTIONS A-A & B-B**

**DRAWING TITLE**

**SCALE** DRAWN BY DESIGN BY CHECKED BY DATE

**AS SHAM AK SG JH 23.06.2023**

**ASMMAR/B2/04**