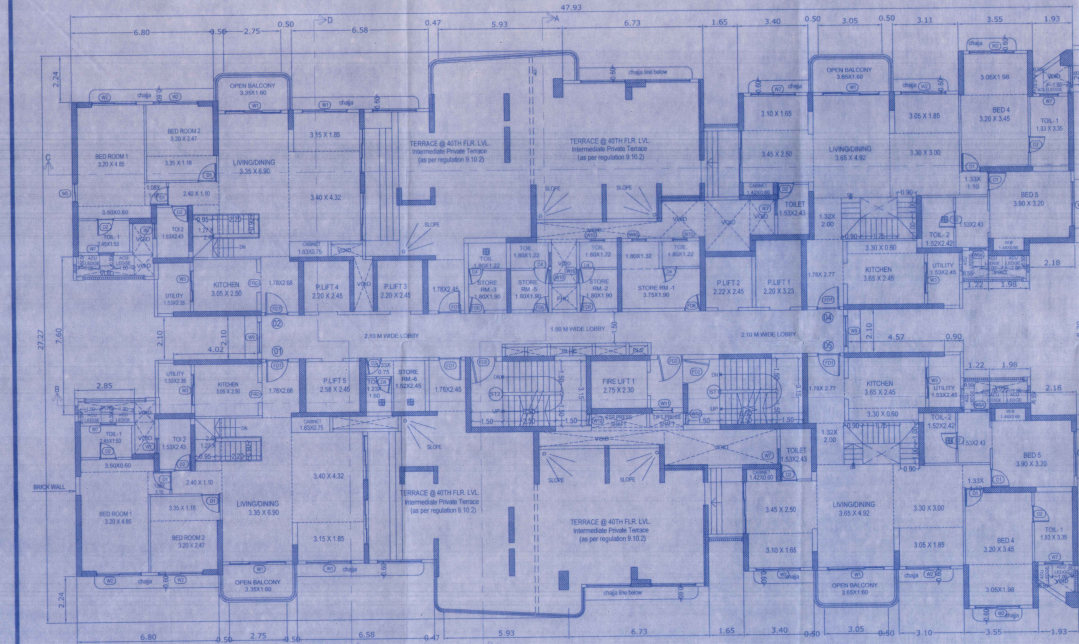


LINE AREA DIAGRAM FOR 40TH FLR  
Scale: 1/100



40TH (pt) FLOOR PLAN (WING-A)  
Scale: 1/100

**BUILT UP AREA CALCULATOR FOR SERVICE FLOOR PLAN**

Sl. No.	Room No.	Area (sq. m)	Area (sq. ft)	Total Area (sq. m)	Total Area (sq. ft)
1	101	1.10	11.83	1.10	11.83
2	102	1.10	11.83	2.20	23.66
3	103	1.10	11.83	3.30	35.49
4	104	1.10	11.83	4.40	47.32
5	105	1.10	11.83	5.50	59.15
6	106	1.10	11.83	6.60	70.98
7	107	1.10	11.83	7.70	82.81
8	108	1.10	11.83	8.80	94.64
9	109	1.10	11.83	9.90	106.47
10	110	1.10	11.83	11.00	118.30
11	111	1.10	11.83	12.10	130.13
12	112	1.10	11.83	13.20	141.96
13	113	1.10	11.83	14.30	153.79
14	114	1.10	11.83	15.40	165.62
15	115	1.10	11.83	16.50	177.45
16	116	1.10	11.83	17.60	189.28
17	117	1.10	11.83	18.70	201.11
18	118	1.10	11.83	19.80	212.94
19	119	1.10	11.83	20.90	224.77
20	120	1.10	11.83	22.00	236.60
21	121	1.10	11.83	23.10	248.43
22	122	1.10	11.83	24.20	260.26
23	123	1.10	11.83	25.30	272.09
24	124	1.10	11.83	26.40	283.92
25	125	1.10	11.83	27.50	295.75
26	126	1.10	11.83	28.60	307.58
27	127	1.10	11.83	29.70	319.41
28	128	1.10	11.83	30.80	331.24
29	129	1.10	11.83	31.90	343.07
30	130	1.10	11.83	33.00	354.90
31	131	1.10	11.83	34.10	366.73
32	132	1.10	11.83	35.20	378.56
33	133	1.10	11.83	36.30	390.39
34	134	1.10	11.83	37.40	402.22
35	135	1.10	11.83	38.50	414.05
36	136	1.10	11.83	39.60	425.88
37	137	1.10	11.83	40.70	437.71
38	138	1.10	11.83	41.80	449.54
39	139	1.10	11.83	42.90	461.37
40	140	1.10	11.83	44.00	473.20
41	141	1.10	11.83	45.10	485.03
42	142	1.10	11.83	46.20	496.86
43	143	1.10	11.83	47.30	508.69
44	144	1.10	11.83	48.40	520.52
45	145	1.10	11.83	49.50	532.35
46	146	1.10	11.83	50.60	544.18
47	147	1.10	11.83	51.70	556.01
48	148	1.10	11.83	52.80	567.84
49	149	1.10	11.83	53.90	579.67
50	150	1.10	11.83	55.00	591.50
51	151	1.10	11.83	56.10	603.33
52	152	1.10	11.83	57.20	615.16
53	153	1.10	11.83	58.30	626.99
54	154	1.10	11.83	59.40	638.82
55	155	1.10	11.83	60.50	650.65
56	156	1.10	11.83	61.60	662.48
57	157	1.10	11.83	62.70	674.31
58	158	1.10	11.83	63.80	686.14
59	159	1.10	11.83	64.90	697.97
60	160	1.10	11.83	66.00	709.80
61	161	1.10	11.83	67.10	721.63
62	162	1.10	11.83	68.20	733.46
63	163	1.10	11.83	69.30	745.29
64	164	1.10	11.83	70.40	757.12
65	165	1.10	11.83	71.50	768.95
66	166	1.10	11.83	72.60	780.78
67	167	1.10	11.83	73.70	792.61
68	168	1.10	11.83	74.80	804.44
69	169	1.10	11.83	75.90	816.27
70	170	1.10	11.83	77.00	828.10
71	171	1.10	11.83	78.10	839.93
72	172	1.10	11.83	79.20	851.76
73	173	1.10	11.83	80.30	863.59
74	174	1.10	11.83	81.40	875.42
75	175	1.10	11.83	82.50	887.25
76	176	1.10	11.83	83.60	899.08
77	177	1.10	11.83	84.70	910.91
78	178	1.10	11.83	85.80	922.74
79	179	1.10	11.83	86.90	934.57
80	180	1.10	11.83	88.00	946.40
81	181	1.10	11.83	89.10	958.23
82	182	1.10	11.83	90.20	970.06
83	183	1.10	11.83	91.30	981.89
84	184	1.10	11.83	92.40	993.72
85	185	1.10	11.83	93.50	1005.55
86	186	1.10	11.83	94.60	1017.38
87	187	1.10	11.83	95.70	1029.21
88	188	1.10	11.83	96.80	1041.04
89	189	1.10	11.83	97.90	1052.87
90	190	1.10	11.83	99.00	1064.70
91	191	1.10	11.83	100.10	1076.53
92	192	1.10	11.83	101.20	1088.36
93	193	1.10	11.83	102.30	1100.19
94	194	1.10	11.83	103.40	1112.02
95	195	1.10	11.83	104.50	1123.85
96	196	1.10	11.83	105.60	1135.68
97	197	1.10	11.83	106.70	1147.51
98	198	1.10	11.83	107.80	1159.34
99	199	1.10	11.83	108.90	1171.17
100	200	1.10	11.83	110.00	1183.00
101	201	1.10	11.83	111.10	1194.83
102	202	1.10	11.83	112.20	1206.66
103	203	1.10	11.83	113.30	1218.49
104	204	1.10	11.83	114.40	1230.32
105	205	1.10	11.83	115.50	1242.15
106	206	1.10	11.83	116.60	1253.98
107	207	1.10	11.83	117.70	1265.81
108	208	1.10	11.83	118.80	1277.64
109	209	1.10	11.83	119.90	1289.47
110	210	1.10	11.83	121.00	1301.30
111	211	1.10	11.83	122.10	1313.13
112	212	1.10	11.83	123.20	1324.96
113	213	1.10	11.83	124.30	1336.79
114	214	1.10	11.83	125.40	1348.62
115	215	1.10	11.83	126.50	1360.45
116	216	1.10	11.83	127.60	1372.28
117	217	1.10	11.83	128.70	1384.11
118	218	1.10	11.83	129.80	1395.94
119	219	1.10	11.83	130.90	1407.77
120	220	1.10	11.83	132.00	1419.60
121	221	1.10	11.83	133.10	1431.43
122	222	1.10	11.83	134.20	1443.26
123	223	1.10	11.83	135.30	1455.09
124	224	1.10	11.83	136.40	1466.92
125	225	1.10	11.83	137.50	1478.75
126	226	1.10	11.83	138.60	1490.58
127	227	1.10	11.83	139.70	1502.41
128	228	1.10	11.83	140.80	1514.24
129	229	1.10	11.83	141.90	1526.07
130	230	1.10	11.83	143.00	1537.90
131	231	1.10	11.83	144.10	1549.73
132	232	1.10	11.83	145.20	1561.56
133	233	1.10	11.83	146.30	1573.39
134	234	1.10	11.83	147.40	1585.22
135	235	1.10	11.83	148.50	1597.05
136	236	1.10	11.83	149.60	1608.88
137	237	1.10	11.83	150.70	1620.71
138	238	1.10	11.83	151.80	1632.54
139	239	1.10	11.83	152.90	1644.37
140	240	1.10	11.83	154.00	1656.20
141	241	1.10	11.83	155.10	1668.03
142	242	1.10	11.83	156.20	1679.86
143	243	1.10	11.83	157.30	1691.69
144	244	1.10	11.83	158.40	1703.52
145	245	1.10	11.83	159.50	1715.35
146	246	1.10	11.83	160.60	1727.18
147	247	1.10	11.83	161.70	1739.01
148	248	1.10	11.83	162.80	1750.84
149	249	1.10	11.83	163.90	1762.67
150	250	1.10	11.83	165.00	1774.50
151	251	1.10	11.83	166.10	1786.33
152	252	1.10	11.83	167.20	1798.16
153	253	1.10	11.83	168.30	1810.00
154	254	1.10	11.83	169.40	1821.83
155	255	1.10	11.83	170.50	1833.66
156	256	1.10	11.83	171.60	1845.49
157	257	1.10	11.83	172.70	1857.32
158	258	1.10	11.83	173.80	1869.15
159	259	1.10	11.83	174.90	1880.98
160	260	1.10	11.83	176.00	1892.81
161	261	1.10	11.83	177.10	1904.64
162	262	1.10	11.83	178.20	1916.47
163	263	1.10	11.83	179.30	1928.30
164	264	1.10	11.83	180.40	1940.13
165	265	1.10	11.83	181.50	1951.96
166	266	1.10	11.83	182.60	1963.79
167	267	1.10	11.83	183.70	1975.62
168	268	1.10	11.83	184.80	1987.45
169	269	1.10	11.83	185.90	1999.28
170	270	1.10	11.83	187.00	2011.11
171	271	1.10	11.83	188.10	2022.94
172	272	1.10	11.83	189.20	2034.77
173	273	1.10	11.83	190.30	2046.60
174	274	1.10	11.83	191.40	2058.43
175	275	1.10	11.83	192.50	2070.26
176	276	1.10	11.83	193.60	2082.09
177	277	1.10	11.83	194.70	2093.92
178	278	1.10	11.83	195.80	2105.75
179	279	1.10	11.83	196.90	2117.58
180	280	1.10	11.83	198.00	2129.41
181	281	1.10	11.83	199.10	2141.24
182	282	1.10	11.83	200.20	2153.07
183	283	1.10	11.83	201.30	2164.90
184	284	1.10	11.83	202.40	2176.73
185	285	1.10	11.83	203.50	2188.56
186	286	1.10	11.83	204.60	2200.39
187	287	1.10	11.83	205.70	2212.22
188	288	1.10	11.83	206.80	2224.05
189	289	1.10	11.83	207.90	2235.88
190	290	1.10	11.83	209.00	2247.71
191	291	1.10	11.83	210.10	2259.54
192	292	1.10	11.83	211.20	2271.37
193	293	1.10	11.83	212.30	2283.20
194	294	1.10	11.83	213.40	2295.03
195	295				