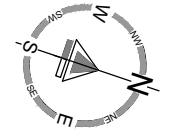
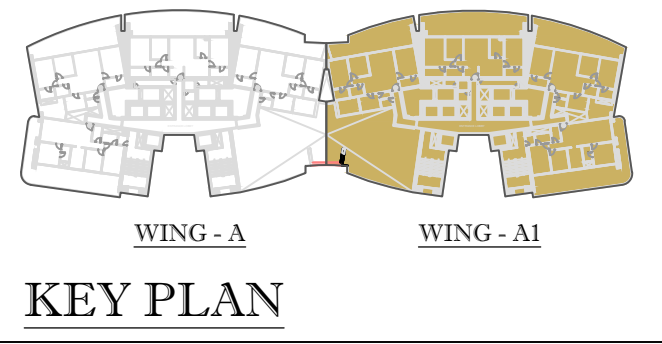
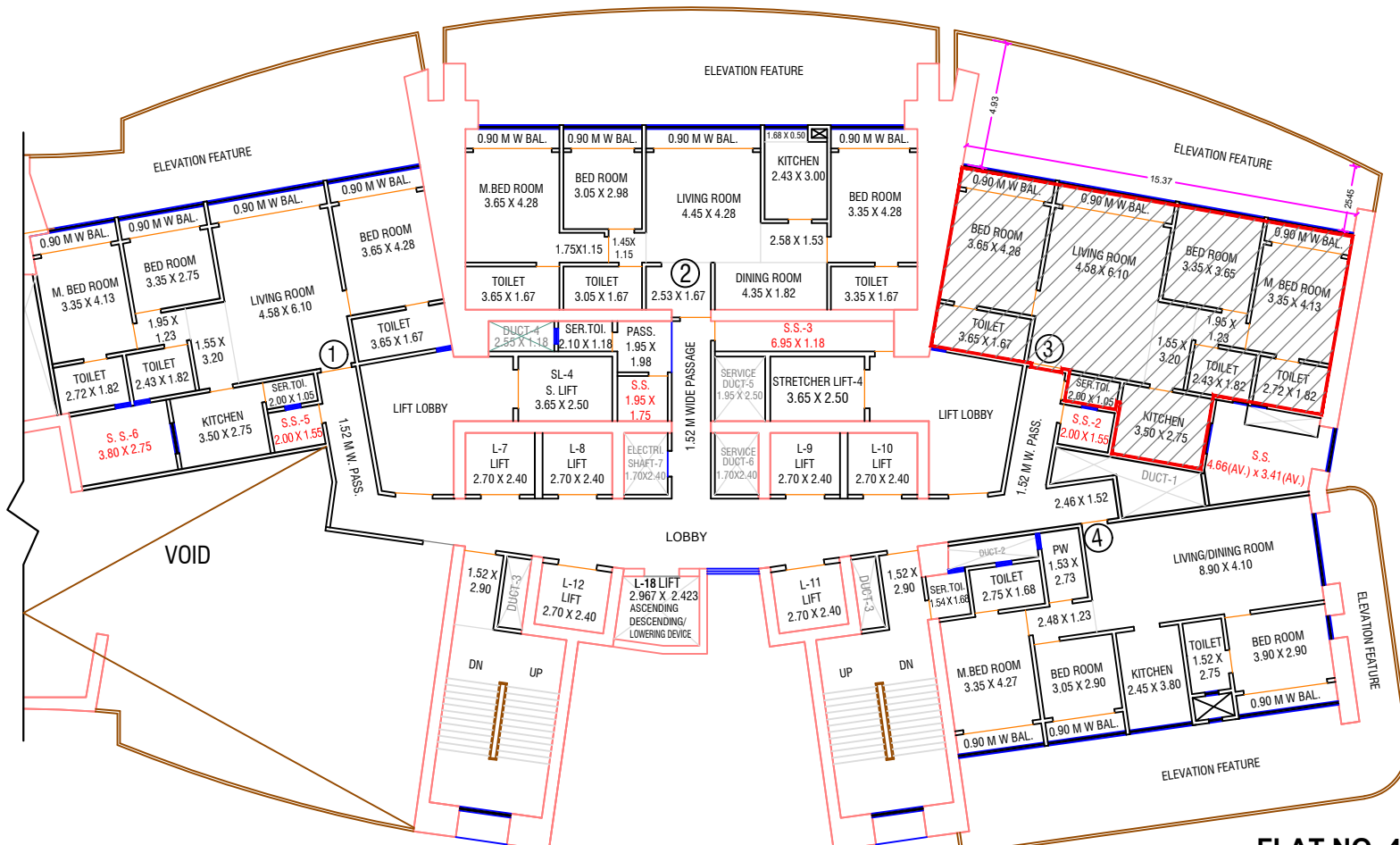


ANNEXURE -



WING - A1

**FLAT NO. 4703 ON FLOOR NO. 35 AS PER APPROVED PLAN
AND NUMBERED AS FLOOR NO. 47**

Minerva



Rise Above

RESIDENTIAL DEVELOPMENT FOR M/S LOKHANDWALA KATARIA CONSTRUCTIONS Pvt. Ltd.

Architect
Hafeez
Contractor

PROPOSED BUILDING ON PLOT BEARING C.S.NO. 1(pt) & 2(pt) OF LOWER PAREL DIVISION AT MAHALAXMI, MUMBAI - 11.