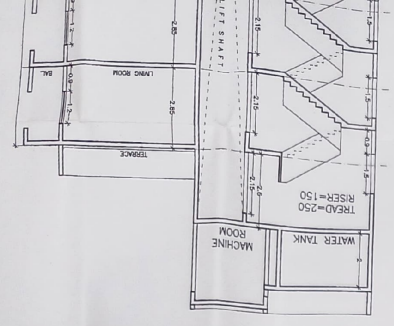
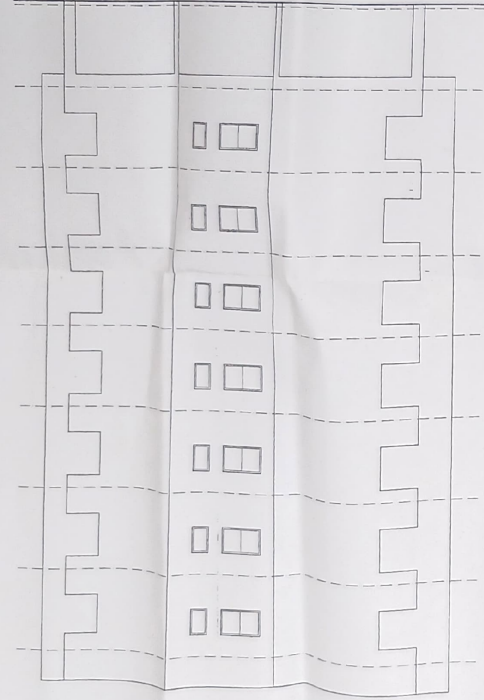




APPROVED

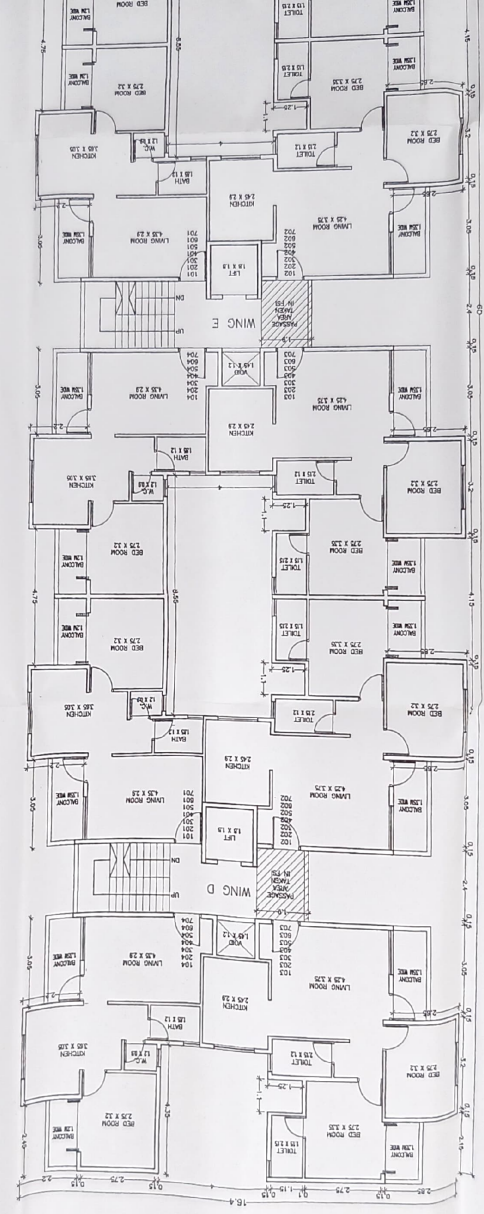
As per the accompanying  
occupied Certificate  
No. Nashid/Co./9/865/1000  
17/108/2013  
Date: 17/10/2013

*SR*  
**Positive Engineer**  
CSM PLANNING  
Legal Manager  
Nashik  
Rahul



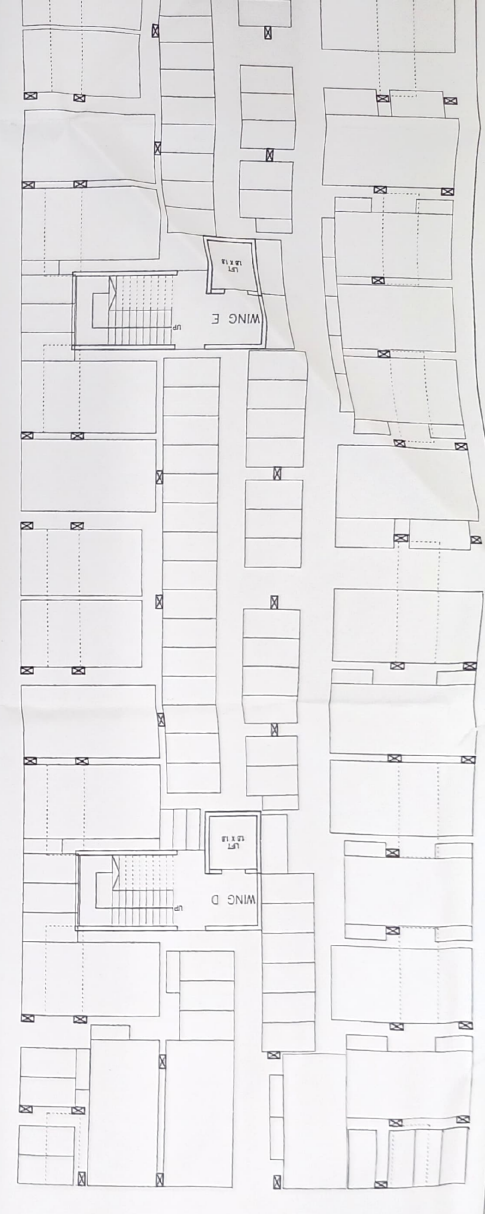
CARPET AREA STATEMENT

FLOOR AREA OF ROOMS	FLOOR AREA OF ROOMS,	FLAT NO.
KITCHEN	KITCHEN	1
AREA UNDER WREATHING WALLS	AREA UNDER WREATHING WALLS	1
37.51 SQM	37.51 SQM	1
101.201,301,401,501,601,701	101.201,301,401,501,601,701	1
E=104.204,304,404,504,604,704	E=104.204,304,404,504,604,704	1
38.05 SQM	38.05 SQM	1
102.203,203,303,403,503,603,703	102.203,203,303,403,503,603,703	1
E=104.204,304,404,504,604,704	E=104.204,304,404,504,604,704	1
51.03 SQM	51.03 SQM	1
103.203,203,303,403,503,603,703	103.203,203,303,403,503,603,703	1
E=104.204,304,404,504,604,704	E=104.204,304,404,504,604,704	1
38.05 SQM	38.05 SQM	1
104.204,304,404,504,604,704	104.204,304,404,504,604,704	1
F=103.203,203,303,403,503,603,703	F=103.203,203,303,403,503,603,703	1
51.18 SQM	51.18 SQM	1
105.205,205,305,405,505,605,705	105.205,205,305,405,505,605,705	1
F=104.204,304,404,504,604,704	F=104.204,304,404,504,604,704	1
37.51 SQM	37.51 SQM	1
373.75 SQM	373.75 SQM	1
21(37.51+51.18+38.05+37.51)=373.75 SQM	21(37.51+51.18+38.05+37.51)=373.75 SQM	1



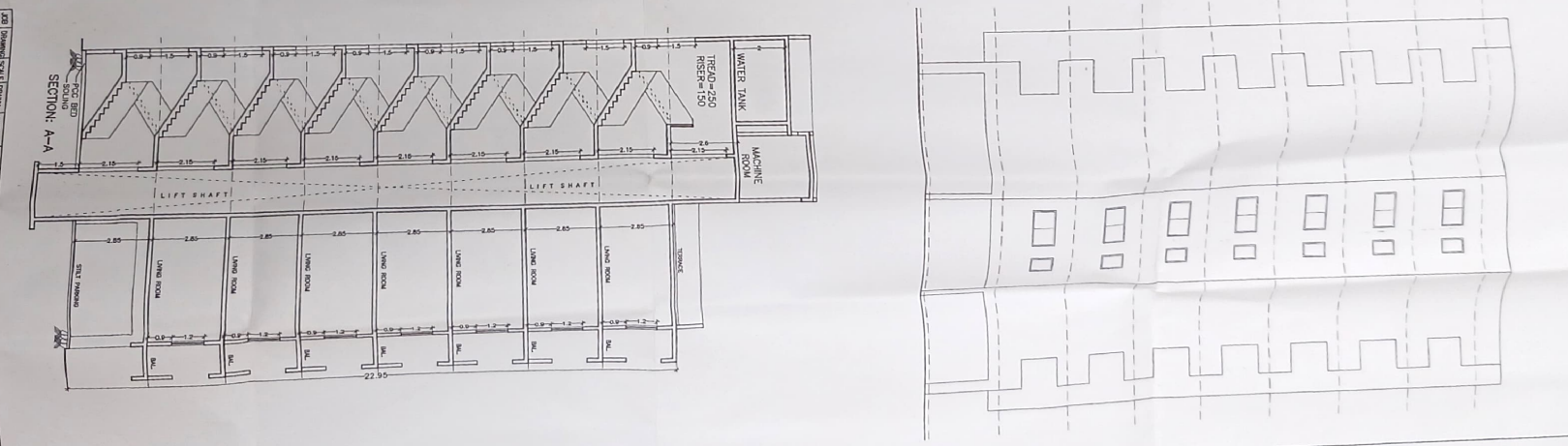
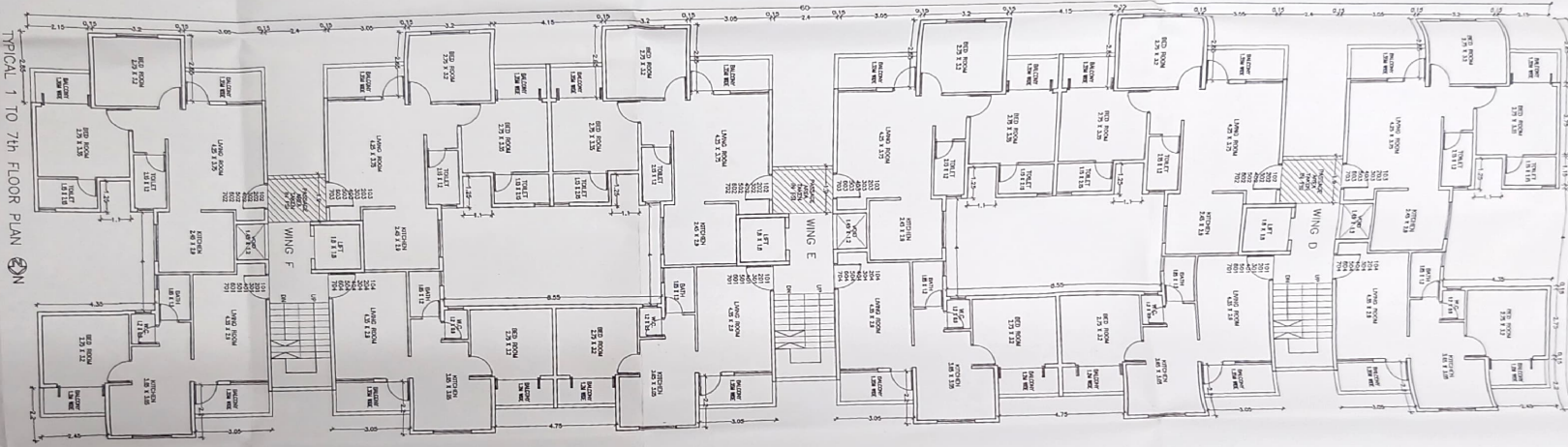
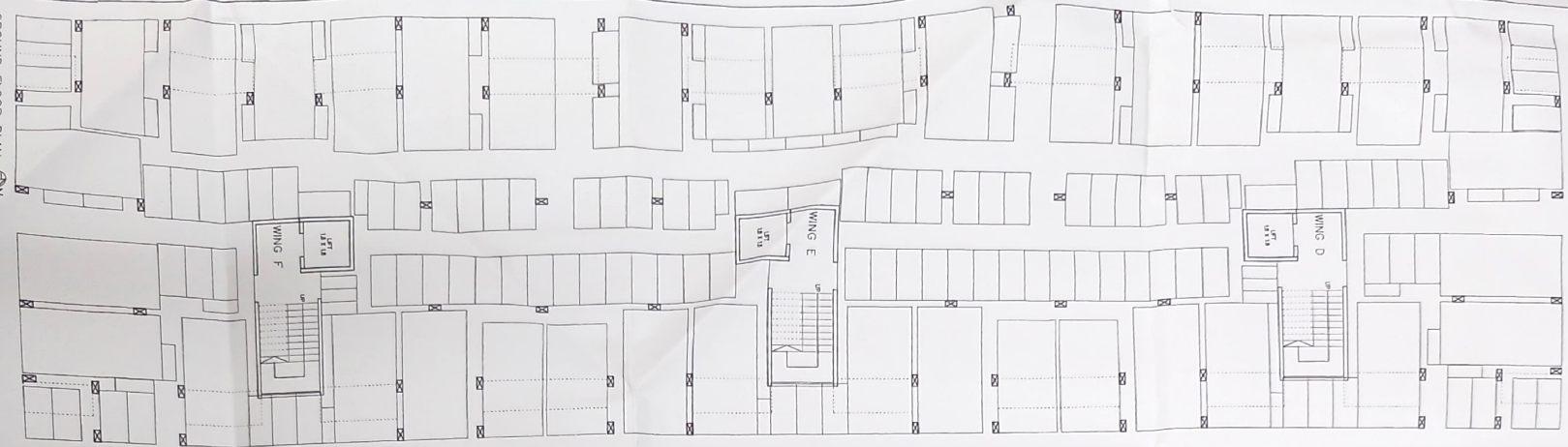
AREA STATEMENT FOR PROPOSED BUILDING (WING - D, E, F)

BUILDING	FLOOR NO.	UP AREA	DOWN AREA	EXCESS	DOUBLE HEIGHT	TERRACE AREA	BALCONY AREA	MINN. 20%	DOWNED IN RS	WALLS	1.2.23	TOTAL
01	FLOOR 1	596.54	0.00	0.00	0.00	0.00	0.00	0.00	0.00	0.00	596.54	
	FLOOR 2	596.54	0.00	0.00	0.00	0.00	0.00	0.00	0.00	0.00	596.54	
	FLOOR 3	596.54	0.00	0.00	0.00	0.00	0.00	0.00	0.00	0.00	596.54	
	FLOOR 4	596.54	0.00	0.00	0.00	0.00	0.00	0.00	0.00	0.00	596.54	
	FLOOR 5	596.54	0.00	0.00	0.00	0.00	0.00	0.00	0.00	0.00	596.54	
	FLOOR 6	596.54	0.00	0.00	0.00	0.00	0.00	0.00	0.00	0.00	596.54	
	FLOOR 7	596.54	0.00	0.00	0.00	0.00	0.00	0.00	0.00	0.00	596.54	
TOTAL											4189.01	



DATA SHEET FOR PROPOSED BUILDING WING - D, E, F										
AREA NO.	FLOOR NO.	ROOM NO.	ROOM NAME	FINISH	CONCRETE IN PLACE	WATER SUPPLY	SEWERAGE	ELECTRICAL	TOTAL AREA	TOTAL VOLUME
01	GROUND	13.23	64.42	0.00	0.00	0.00	0.00	0.00	506.54	13.23
02	GROUND	13.23	64.42	0.00	0.00	0.00	0.00	0.00	506.54	13.23
03	GROUND	13.23	64.42	0.00	0.00	0.00	0.00	0.00	506.54	13.23
04	GROUND	13.23	64.42	0.00	0.00	0.00	0.00	0.00	506.54	13.23
05	GROUND	13.23	64.42	0.00	0.00	0.00	0.00	0.00	506.54	13.23
06	GROUND	13.23	64.42	0.00	0.00	0.00	0.00	0.00	506.54	13.23
07	GROUND	13.23	64.42	0.00	0.00	0.00	0.00	0.00	506.54	13.23
08	GROUND	13.23	64.42	0.00	0.00	0.00	0.00	0.00	506.54	13.23
09	GROUND	13.23	64.42	0.00	0.00	0.00	0.00	0.00	506.54	13.23
10	GROUND	13.23	64.42	0.00	0.00	0.00	0.00	0.00	506.54	13.23
TOTAL		4188.01	534.44	0.00	0.00	0.00	0.00	0.00	4188.01	534.44

CARPET AREA STATEMENT										
AREA NO.	FLOOR NO.	ROOM NO.	ROOM NAME	FINISH	AREA UNDER FINISH	TOTAL AREA	TOTAL VOLUME	TOTAL AREA	TOTAL VOLUME	TOTAL AREA
01	GROUND	13.23	64.42	0.00	0.00	0.00	0.00	0.00	0.00	0.00
02	GROUND	13.23	64.42	0.00	0.00	0.00	0.00	0.00	0.00	0.00
03	GROUND	13.23	64.42	0.00	0.00	0.00	0.00	0.00	0.00	0.00
04	GROUND	13.23	64.42	0.00	0.00	0.00	0.00	0.00	0.00	0.00
05	GROUND	13.23	64.42	0.00	0.00	0.00	0.00	0.00	0.00	0.00
06	GROUND	13.23	64.42	0.00	0.00	0.00	0.00	0.00	0.00	0.00
07	GROUND	13.23	64.42	0.00	0.00	0.00	0.00	0.00	0.00	0.00
08	GROUND	13.23	64.42	0.00	0.00	0.00	0.00	0.00	0.00	0.00
09	GROUND	13.23	64.42	0.00	0.00	0.00	0.00	0.00	0.00	0.00
10	GROUND	13.23	64.42	0.00	0.00	0.00	0.00	0.00	0.00	0.00
TOTAL		4188.01	534.44	0.00	0.00	0.00	0.00	0.00	0.00	0.00



APPROVED  
 As per the specifications  
 No. Nishida Col. (5) 961/963  
 Date: 17.10.2012

STAMP OF APPROVAL

MASTARE ENTERPRISES  
 PARTNER  
 GENESIS  
 ARCHITECTS