

APPROVED SUBJECT TO THE CONDITIONS MENTIONED IN THIS OFFICE LETTER

APPROVED SUBJECT TO THE CONDITIONS MENTIONED IN THIS OFFICE LETTER

APPROVED SUBJECT TO THE CONDITIONS MENTIONED IN THIS OFFICE LETTER

APPROVED SUBJECT TO THE CONDITIONS MENTIONED IN THIS OFFICE LETTER

APPROVED SUBJECT TO THE CONDITIONS MENTIONED IN THIS OFFICE LETTER

APPROVED SUBJECT TO THE CONDITIONS MENTIONED IN THIS OFFICE LETTER

APPROVED SUBJECT TO THE CONDITIONS MENTIONED IN THIS OFFICE LETTER

APPROVED SUBJECT TO THE CONDITIONS MENTIONED IN THIS OFFICE LETTER

APPROVED SUBJECT TO THE CONDITIONS MENTIONED IN THIS OFFICE LETTER

APPROVED SUBJECT TO THE CONDITIONS MENTIONED IN THIS OFFICE LETTER

APPROVED SUBJECT TO THE CONDITIONS MENTIONED IN THIS OFFICE LETTER

APPROVED SUBJECT TO THE CONDITIONS MENTIONED IN THIS OFFICE LETTER

APPROVED SUBJECT TO THE CONDITIONS MENTIONED IN THIS OFFICE LETTER

APPROVED SUBJECT TO THE CONDITIONS MENTIONED IN THIS OFFICE LETTER

APPROVED SUBJECT TO THE CONDITIONS MENTIONED IN THIS OFFICE LETTER

APPROVED SUBJECT TO THE CONDITIONS MENTIONED IN THIS OFFICE LETTER

APPROVED SUBJECT TO THE CONDITIONS MENTIONED IN THIS OFFICE LETTER

APPROVED SUBJECT TO THE CONDITIONS MENTIONED IN THIS OFFICE LETTER

APPROVED SUBJECT TO THE CONDITIONS MENTIONED IN THIS OFFICE LETTER

APPROVED SUBJECT TO THE CONDITIONS MENTIONED IN THIS OFFICE LETTER

APPROVED SUBJECT TO THE CONDITIONS MENTIONED IN THIS OFFICE LETTER

APPROVED SUBJECT TO THE CONDITIONS MENTIONED IN THIS OFFICE LETTER

APPROVED SUBJECT TO THE CONDITIONS MENTIONED IN THIS OFFICE LETTER

APPROVED SUBJECT TO THE CONDITIONS MENTIONED IN THIS OFFICE LETTER

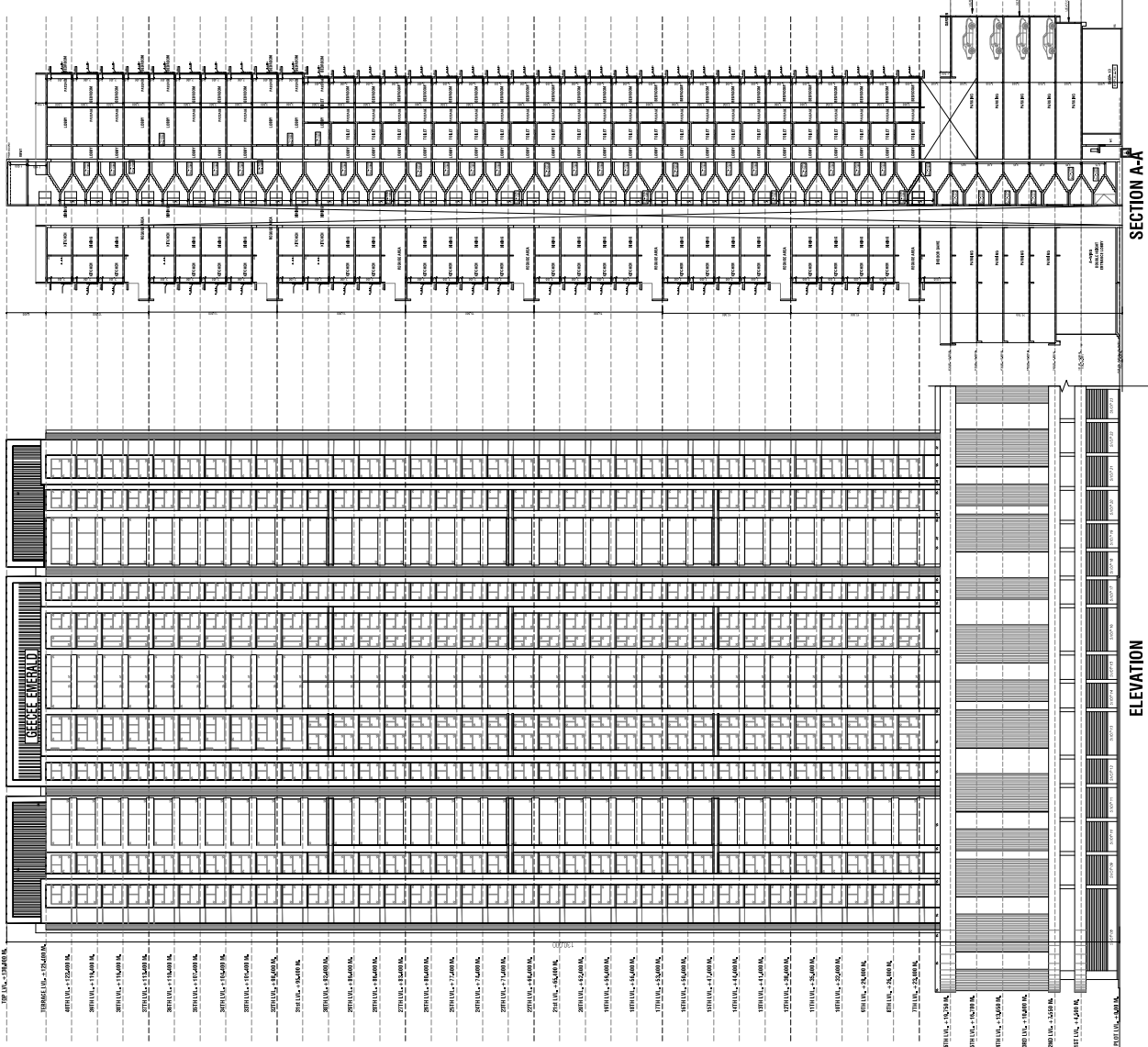
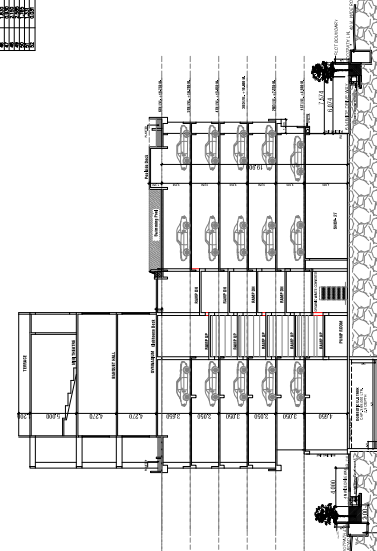
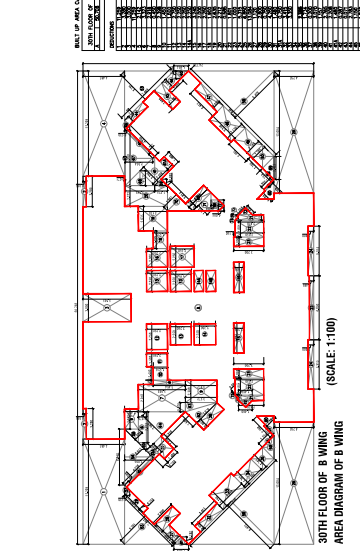
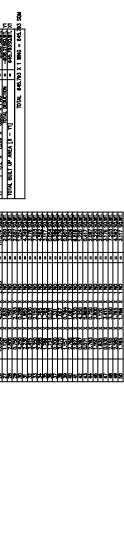
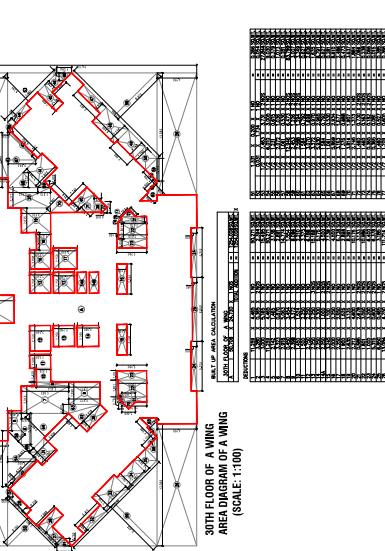
APPROVED SUBJECT TO THE CONDITIONS MENTIONED IN THIS OFFICE LETTER

APPROVED SUBJECT TO THE CONDITIONS MENTIONED IN THIS OFFICE LETTER

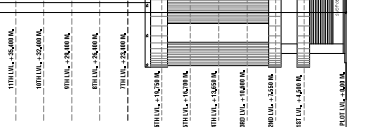
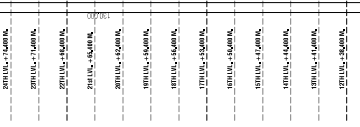
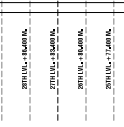
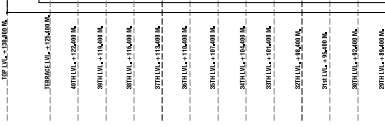
APPROVED SUBJECT TO THE CONDITIONS MENTIONED IN THIS OFFICE LETTER

APPROVED SUBJECT TO THE CONDITIONS MENTIONED IN THIS OFFICE LETTER

APPROVED SUBJECT TO THE CONDITIONS MENTIONED IN THIS OFFICE LETTER



SECTION D-D



DESCRIPTION OF JOB: AMBERED RESIDENTIAL COMMERCIAL BUILDING... SATISH AJLIJA ARCHITECTS

APPROVED SUBJECT TO THE CONDITIONS MENTIONED IN THIS OFFICE LETTER

No. **DKK/03/01/1794/17/2018 & 43/2001/2018**  
 Dtd. **27 JAN 2018**



**DESCRIPTION OF JOB**  
 ARCHITECTURAL DRAWING FOR THE PROPOSED BUILDING  
 LOCATION: AL. K. H. SEKTOR 22, PANGKALAN, NANGKALAN, SURABAYA

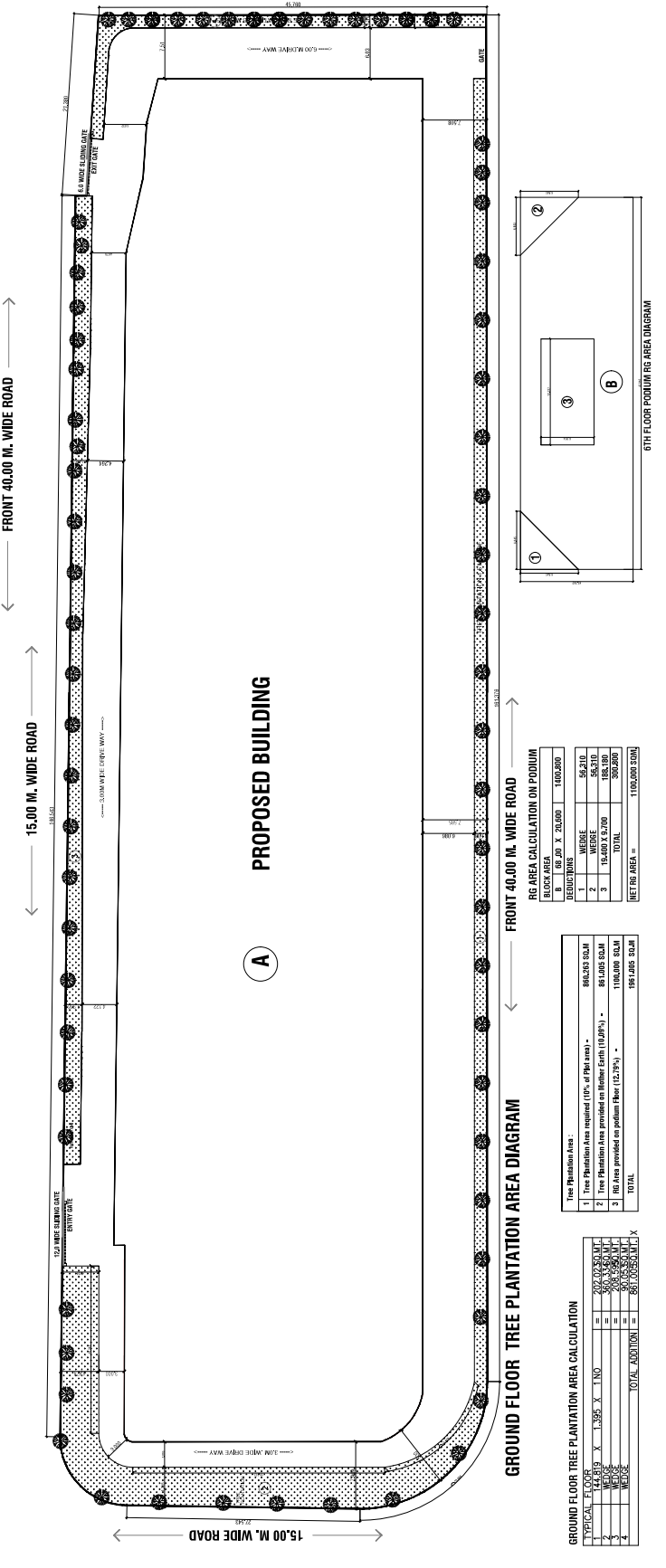
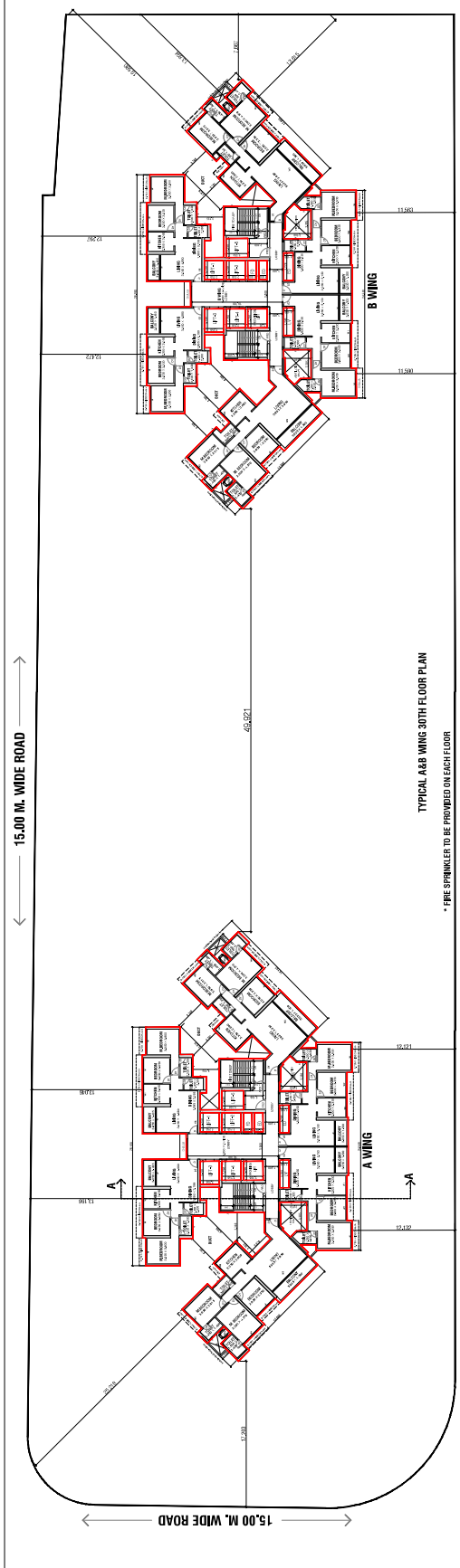
**CLIENT**  
 PT. ...

**DATE**  
 27 JAN 2018

**SCALE**  
 1:500

**PROJECT**  
 ...

**ARCHITECT**  
 SATRIO AULITA ARCHITECTS  
 JALAN ... SURABAYA



**RG AREA CALCULATION ON PODIUM**

NO.	DESCRIPTION	AREA (SQ. M)
1	WEDE	58,310
2	WEDE	58,310
3	TOTAL	116,620

NET RG AREA = 116,620 SQ.M

**Tree Plantation Area:**

NO.	DESCRIPTION	AREA (SQ. M)
1	Tree Plantation Area required (10% of floor area)	86,250 SQ.M
2	Tree Plantation Area provided on Building Earth (10.82%)	86,105 SQ.M
3	RG Area provided on podium floor (12.78%)	116,620 SQ.M
TOTAL		198,725 SQ.M

**GROUND FLOOR TREE PLANTATION AREA CALCULATION**

TYPICAL FLOOR	AREA (SQ. M)	10%	AREA (SQ. M)
1	14,419	1,385	1,385
2	14,419	1,385	1,385
3	14,419	1,385	1,385
4	14,419	1,385	1,385
5	14,419	1,385	1,385
TOTAL ADDITION			6,940