

VISHWARAJ HEIGHTS

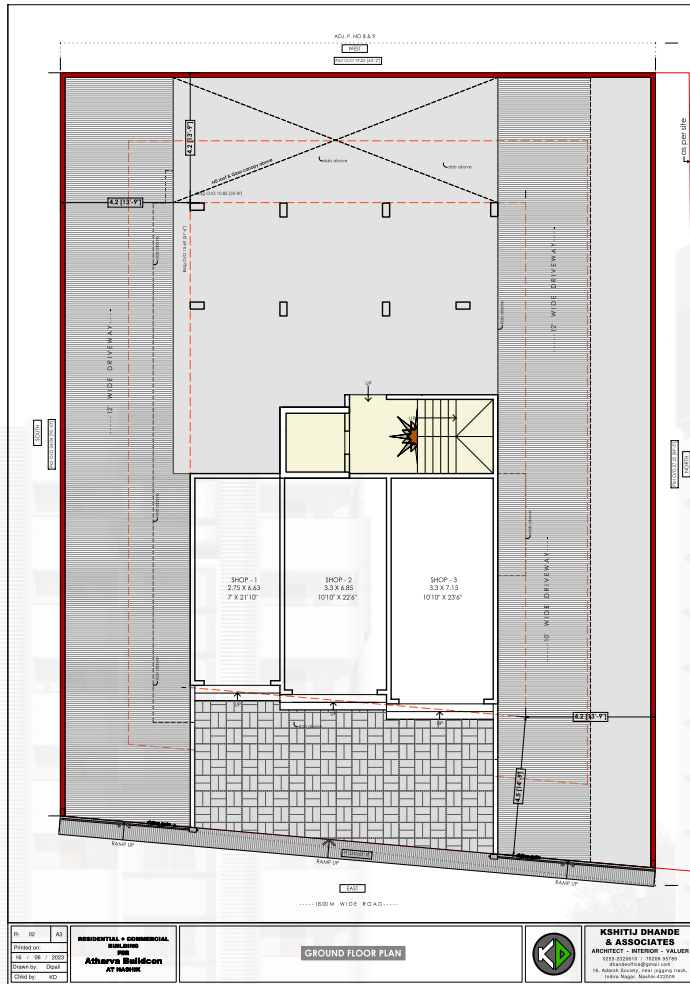
3 BHK Luxurious Flats
Indira Nagar, Nashik



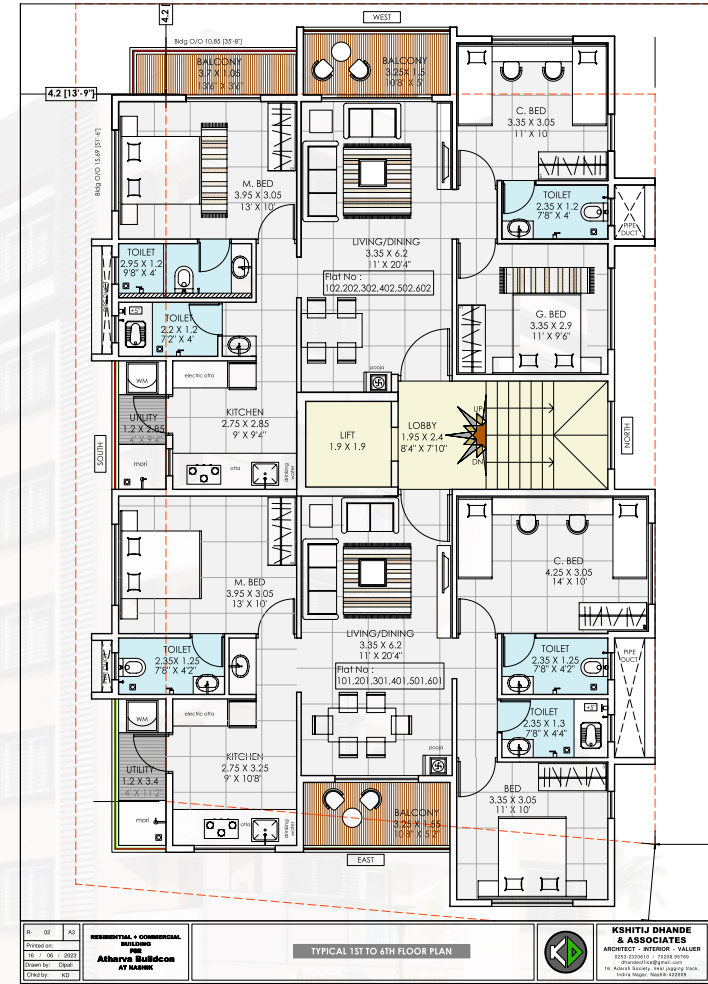
ATHARVA
BUILDCON



GROUND FLOOR PLAN



1ST TO 6TH FLOOR PLAN



Note : Whilst every care has been taken in the preparation of this brochure the promoters reserve every right to make additions alterations, amendments that may be necessitated from time to time. Drawings are indicative and subject to change.

VISHWARAJ HEIGHTS

SPECIFICATIONS

BUILDING STRUCTURE

- R.C.C. Frame Structure
- External Walls 6"
- Internal Walls 4"

ELECTRICAL

- Concealed copper wiring with sufficient electrical points
- Earth leakage circuit breakers
- Polycab/ Havells or equivalent

ROOFTOP SOLAR

- For common amenities
- Saves electricity bill

KITCHEN

- Granite Platform for kitchen
- Floor - Verified Tiles
- Walls - Ceramic Tiles up to slab level
- Kitchen Platforms - Granite platform with stainless steel bowl sink

DOORS AND WINDOWS

- Front Doorframe - Hardwood/Plywood with both side laminate
- Internal Door Frame - Granite/Plywood
- Windows - Powder coated Aluminium sliding windows with mosquito net
- MS Grill for safety

BATHROOMS

- Floor - Antiskid tiles
- Wall - Tiles up to Slab
- Sanitary - Parryware/ Jaquar/ Solo

LIFT

- Best Quality with Battery Backup

PLUMBING

- Concealed Plumbing



VISHWARAJ HEIGHTS

A PROJECT BY:



Imagine a home that is more than just a place to live. A home that is a sanctuary, a refuge from the hustle and bustle of everyday life. A home that is built with your needs and desires in mind. That's what Vishwaraj Heights is all about. It's a brand-new residential complex by Atharva Buildcon, featuring 3 BHK luxury apartments that are perfect for families. But what really sets Vishwaraj Heights apart is its emotional appeal. It's a home that is designed to make you feel safe, and loved. From the moment you walk through the door, you'll know that you're home.

So if you're looking for a home that is more than just a place to live, then Vishwaraj Heights is the perfect choice for you. It's the home you've always dreamed of.

Founding Partners:

Mr. Ravindra Mahajan: +91-94215-64987

Mr. Sunil Pharande: +91-98220-46802

ATHARVA BUILDCON

Shop No 616 & 617, Business world,
Govind Nagar, Nashik - 422009



SCAN FOR LOCATION

VISHWARAJ HEIGHTS

Opp Aditya Hall, Opp Guru Gobind Singh college,
Kailash Nagar, Indira Nagar, Nashik - 422009

