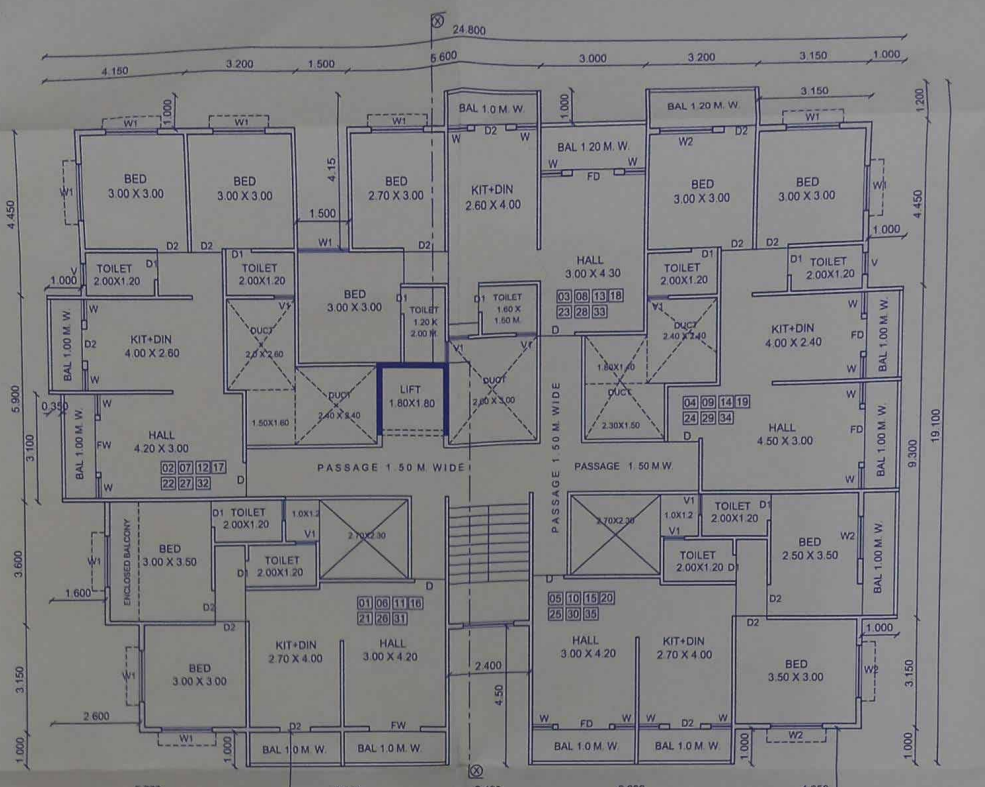
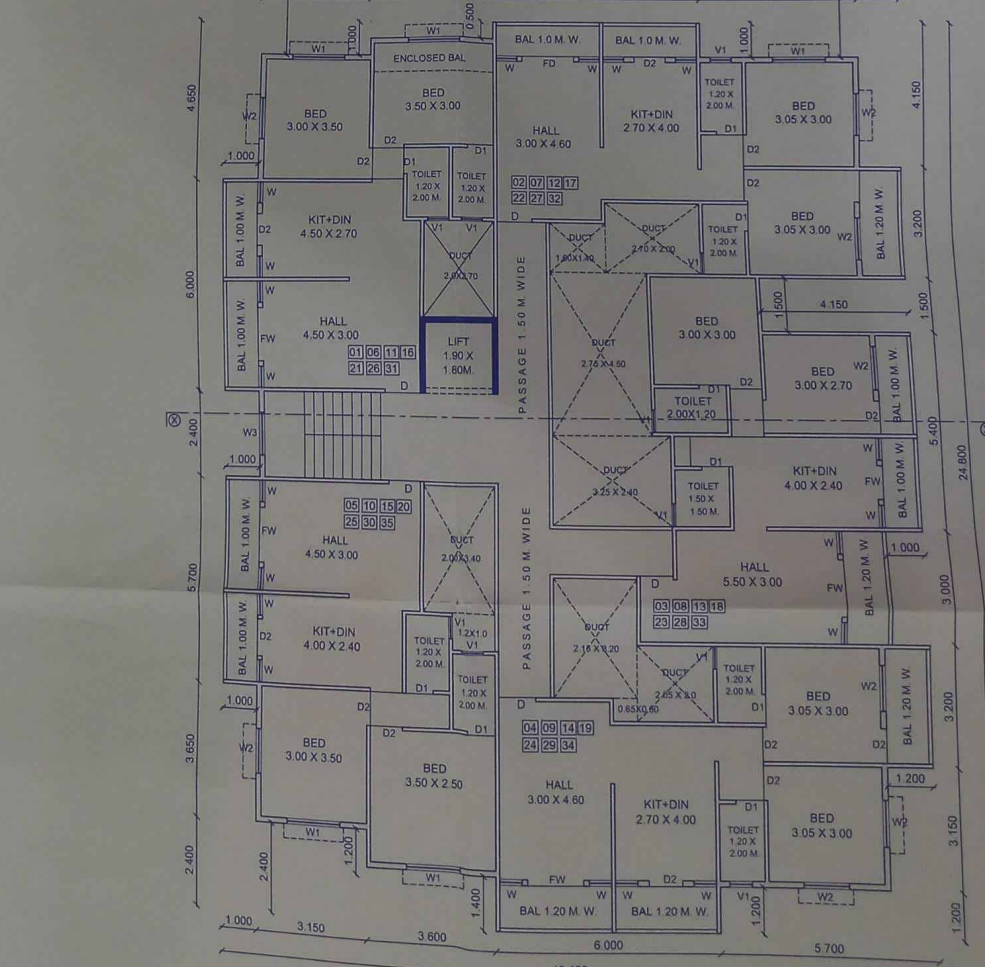


9.00 M. WIDE ROAD



FLOOR ONE TO SEVENTH
BUILDING NO - 'B'

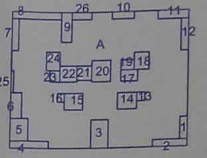


FLOOR ONE
FLOOR TWO
FLOOR THREE
FLOOR FOUR
BUILDING NO - 'A'

FLOOR FIVE
FLOOR SIX
FLOOR SEVENTH



TYPICAL FLOOR FLOOR ONE TO
BUILDING NO - 'B'
GROUND FLOOR P
1) 3.50 X 2.60 = 9.10 SQM. (STAI
2) 4.50 X 2.50 = 11.25 SQM. (LOE
3) 3.85 X 3.15 = 12.12 SQM. (DRI
TOTAL P. LINE B/UP AREA = 32.4
GROUND FLOOR P. LINE B/UP A



FLOOR ONE TO FLOOR SEVENTH

Form of Statement 1 (to be printed on...

Building No.	Floor No.	Plan
(1)	(2)	
1		
TOTAL FLOOR		

Form of Statement 2 (to be printed on...)

Building No.	Floor No./Name	To
(1)	(2)	
1	GROUND FLOOR	B
	STILT FLOOR ONE	
	STILT FLOOR TWO	
	STILT FLOOR THREE	
	STILT FLOOR FOUR	
	STILT FLOOR FIVE	
	STILT FLOOR SIX	
	STILT FL SEVENTH	

SCHEDULE OF OPENING

TYPE	SIZE
D	1.00m X 2.10m.
D1	0.75m X 2.10m.
D2	0.90m X 2.10m.
W	0.60m X 1.20m.
W1	1.50m X 2.10m.
W2	1.20m X 1.20m.
FW	1.50m X 2.10m.
V1	0.60m X 0.90m.

