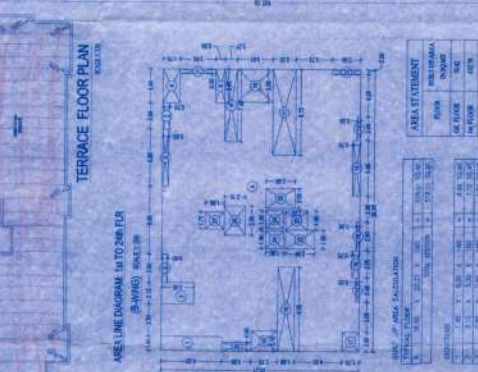
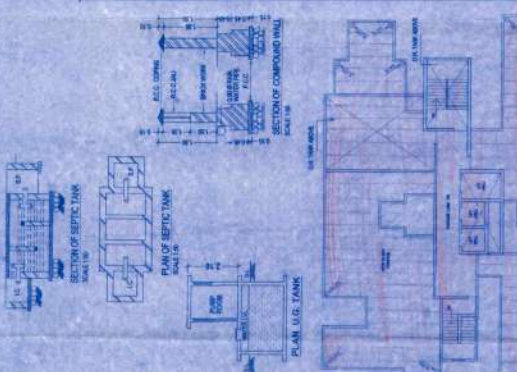
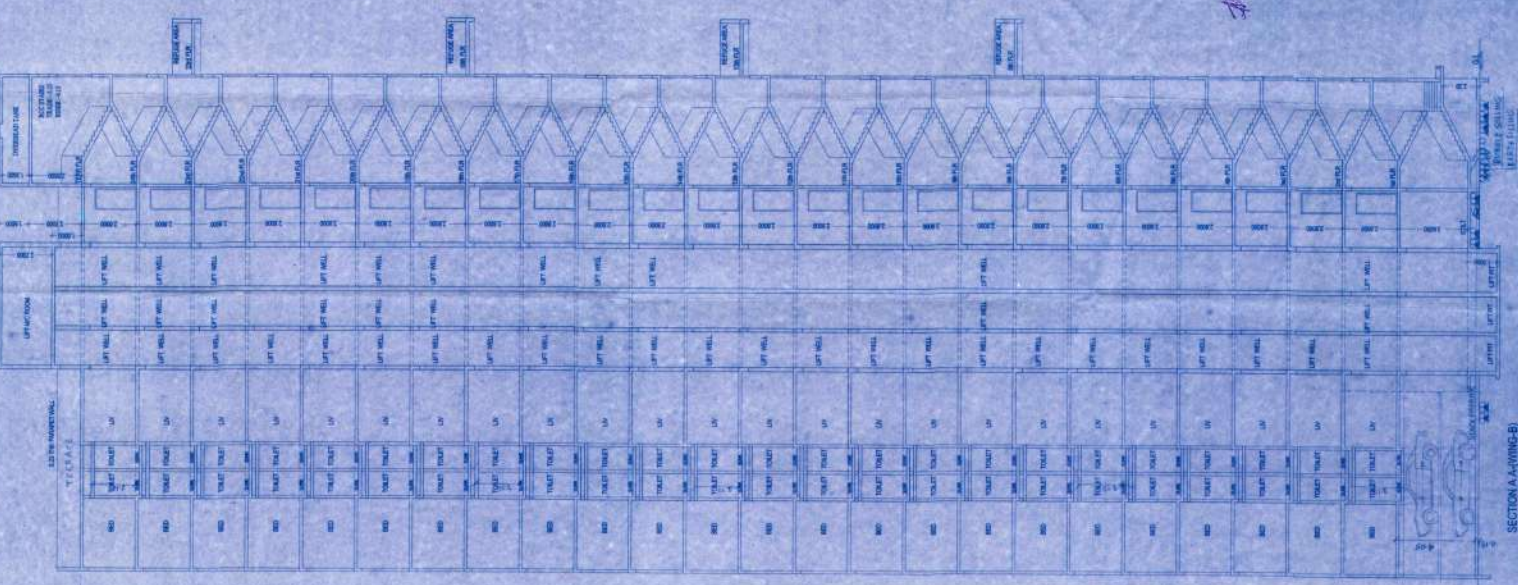


DESCRIPTION OF PROPOSAL & PROPERTY
PROPOSED RESIDENTIAL BUILDING ON PLOT BEARING
AT VILLAGE GANDEVALI MUNICIPAL CORPORATION, KALYAN
FOR SHRI-ULP K MORE (P.A. HOLDER)
M/S. GANDEVALI DEVELOPERS
SHRI - SANGAY R. INCHI (PARTNER)

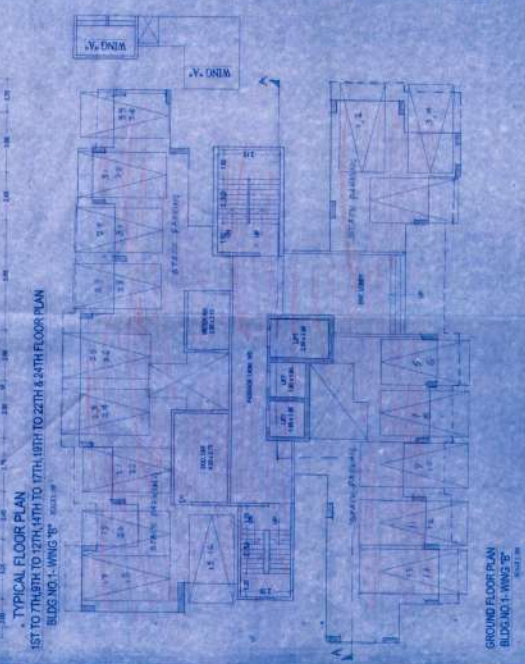
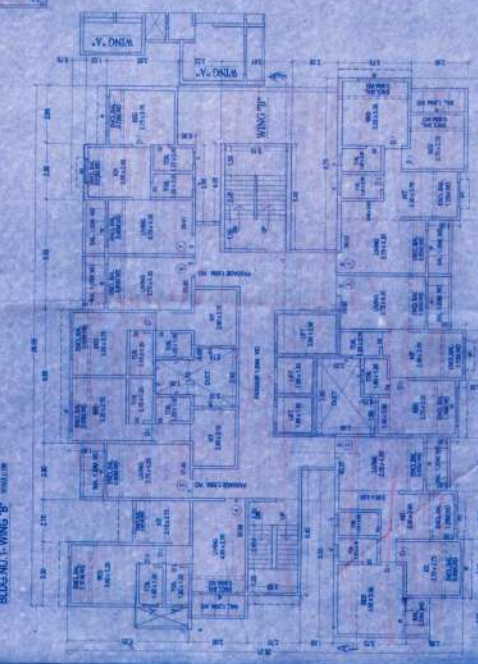
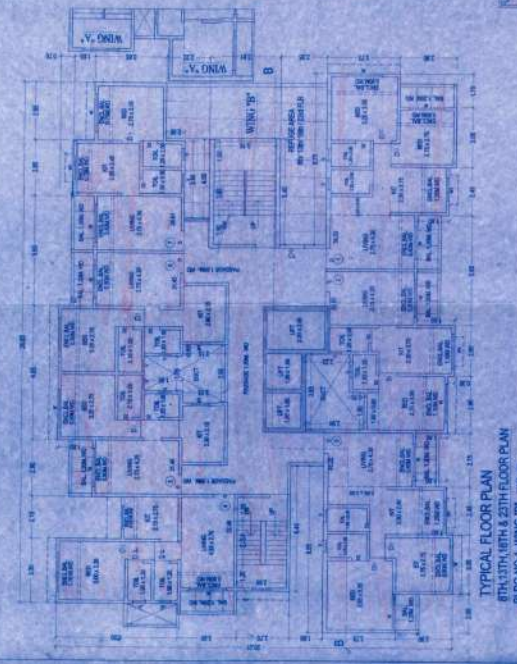
STAMP OF APPROVAL OF PLAN

OFFICE OF THE KALYAN DOMBIVLI
MUNICIPAL CORPORATION, KALYAN
Building No. 108, 109 & 110, 101 & 102, 103 & 104, 105 & 106
Date: 27/11/2021
SANCTIONED



AREA STATEMENT

FLOOR	GR. FLOOR	1ST FLOOR	2ND FLOOR	3RD FLOOR	4TH FLOOR	5TH FLOOR	6TH FLOOR	7TH FLOOR	8TH FLOOR	9TH FLOOR	10TH FLOOR	11TH FLOOR	12TH FLOOR	13TH FLOOR	14TH FLOOR	15TH FLOOR	16TH FLOOR	17TH FLOOR	18TH FLOOR	19TH FLOOR	20TH FLOOR	21TH FLOOR	22TH FLOOR	23TH FLOOR	24TH FLOOR	TOTAL AREA
Area (Sq. Ft.)	215.00	215.00	215.00	215.00	215.00	215.00	215.00	215.00	215.00	215.00	215.00	215.00	215.00	215.00	215.00	215.00	215.00	215.00	215.00	215.00	215.00	215.00	215.00	215.00	215.00	5160.00
Area (Sq. M)	19.91	19.91	19.91	19.91	19.91	19.91	19.91	19.91	19.91	19.91	19.91	19.91	19.91	19.91	19.91	19.91	19.91	19.91	19.91	19.91	19.91	19.91	19.91	19.91	19.91	477.36



NAME, ADDRESS & SIGNATURE OF OWNER

M/S. GANDEVALI DEVELOPERS
SHRI - SANGAY R. INCHI (PARTNER)

ARCHITECT

DE-CON ASSOCIATES
ARCHITECTS & DESIGNERS
S/17/BEARER STREET
KALYAN, DIST. THANE
CA. No. 2016/19805

CONSULTING ARCHITECT

TIBIN TONGSON THOMAS
ARCHITECTS & DESIGNERS
KALYAN, DIST. THANE
CA. No. 2016/19805