

OFFICE OF THE KALYAN DOMBIVLI MUNICIPAL CORPORATION, KALYAN.
 KDMC/TPD/18P/15P/2022-23/79.
 Date: - 09/10/2023.

SANCTIONED
 ASSISTANT DIRECTOR OF MUNICIPAL CORPORATION OF KALYAN
 Maharashtra Municipal Corporation

BUILT UP AREA STATEMENT

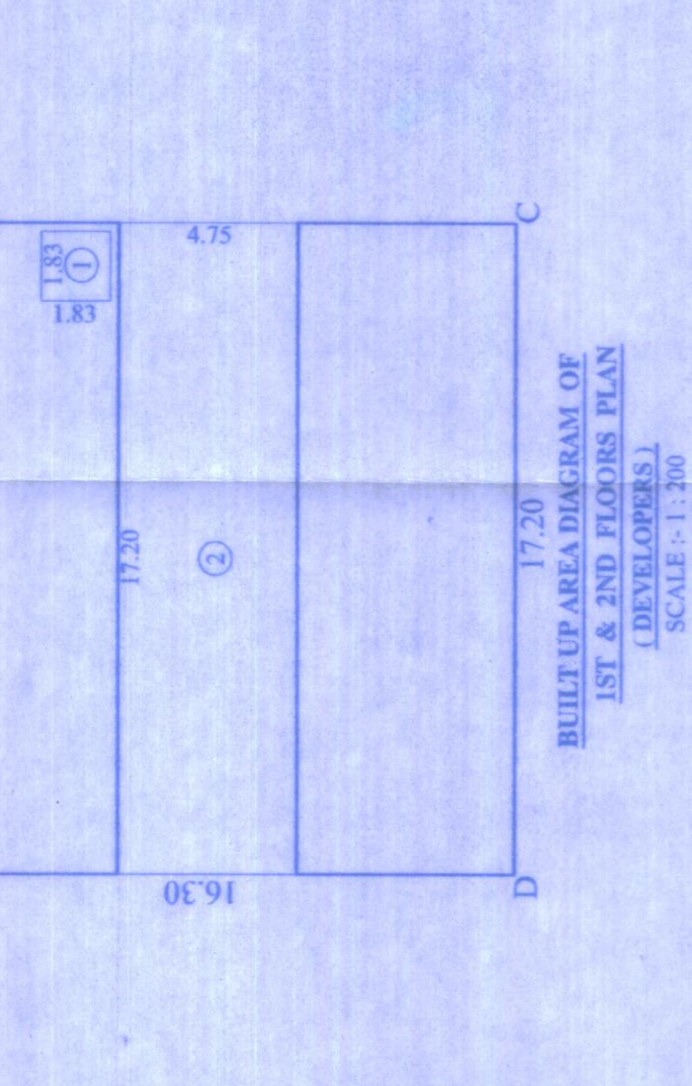
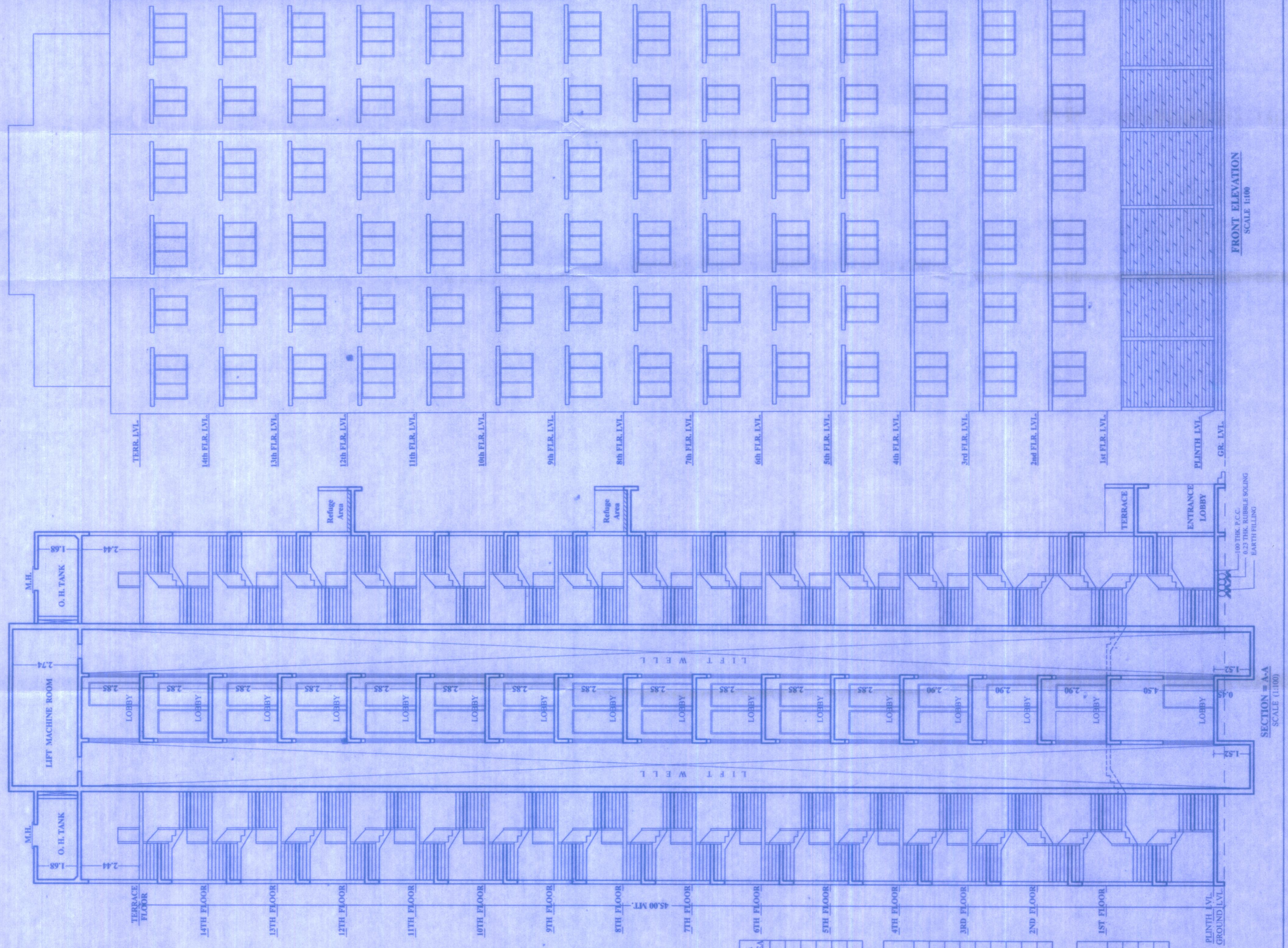
FLOORS	FOR MHADA AREA IN SQ. MET.	FOR DEVELOPERS AREA IN SQ. MET.
GROUND FLOOR	7349 SQ.M	12646 SQ.M
FIRST FLOOR	5943 SQ.M	19531 SQ.M
SECOND FLOOR	5943 SQ.M	19531 SQ.M
THIRD FLOOR	2145 SQ.M	---
FOURTH FLOOR	2145 SQ.M	---
FIFTH FLOOR	2145 SQ.M	---
SIXTH FLOOR	2145 SQ.M	---
SEVENTH FLOOR	2145 SQ.M	---
EIGHTH FLOOR	2145 SQ.M	---
NINTH FLOOR	2145 SQ.M	---
TENTH FLOOR	2145 SQ.M	---
ELEVENTH FLOOR	2145 SQ.M	---
TWELFTH FLOOR	2145 SQ.M	---
THIRTEENTH FLOOR	2145 SQ.M	---
FOURTEENTH FLOOR	2145 SQ.M	---
TOTAL	2,970.15 SQ.M	517.68 SQ.M

TOTAL BUILT UP AREA PROPOSED FOR MHADA = 2,970.15 SQ.M.
 TOTAL BUILT UP AREA PROPOSED FOR DEVELOPERS = 517.68 SQ.M.

SCHEDULE OF DOORS & WINDOWS

TYPE	SIZE (LxB)	AREA	DESCRIPTION
R.S.1	3.05 X 2.44	7.44	ROLLING SHUTTER
R.S.2	2.7 X 2.44	6.68	ROLLING SHUTTER
R.S.3	2.67 X 2.44	6.51	ROLLING SHUTTER
R.S.4	2.64 X 2.44	6.44	ROLLING SHUTTER
R.S.5	2.39 X 2.44	5.83	ROLLING SHUTTER
R.S.6	2.37 X 2.44	5.78	ROLLING SHUTTER
D	1.83 X 2.10	3.84	T.W. FRAME PANELLED DOOR
D1	1.53 X 2.10	3.19	T.W. FRAME PANELLED DOOR
D2	0.95 X 2.10	1.99	T.W. FRAME PANELLED DOOR
W	3.05 X 1.20	3.66	ALAIN. GLAZING WINDOW
W1	2.44 X 1.20	2.93	ALAIN. GLAZING WINDOW
W2	1.22 X 1.20	1.46	ALAIN. GLAZING WINDOW
V	0.61 X 0.75	0.46	ALAIN. LOUVERED WINDOW

DESCRIPTION OF PROPOSAL AND PROPERTY
 PROPOSED RESIDENTIAL & COMMERCIAL COMPLEX ON PLOT BEARING S.NO. & H.NO. 1A, 1B, 2, 3, 4 & 5 AT VILLAGE - VADAVALLI, TAL.: KALYAN, DIST - THANE.
 OWNERS NAME: SHRI. SHYRAM GANGARAM TARE & OTHERS.
 P.O.A HOLDER: P.O.A. HOLDER
 SIGNATURE: SHRI. MOHAMMAD SALIM YUSUF
 SHOBANA JOSHI PANDE ARCHITECTS & INTERIOR DESIGNERS KALYAN (W) 42/1/1 PH. NO. 0251-231410
 SCALE: AS SHOWN 21-07-2021 SAGR S.D. MENI BLD/099 MUMBAI - MHADA



FOR DEVELOPERS:-
 BUILT-UP AREA STATEMENT: 1ST & 2ND FLOOR
 AREA OF BLOCK (ABCD) = 17.20 X 16.30 = 280.36 SQ.M
 STANDARD DEDUCTIONS:-
 1. 1.83 X 1.83 = 3.35 SQ.M
 2. 17.20 X 4.75 = 81.70 SQ.M
 TOTAL DEDUCTIONS = 85.05 SQ.M
 NET AREA = 280.36 - 85.05 = 195.31 SQ.M

FOR MHADA:-
 BUILT-UP AREA STATEMENT: TYPICAL FLOORS
 AREA OF BLOCK (ABCD) = 17.20 X 16.30 = 280.36 SQ.M
 STANDARD DEDUCTIONS:-
 1. 5.94 X 0.45 X 2 = 5.34 SQ.M
 2. 2.89 X 0.54 X 4 = 6.24 SQ.M
 3. 4.11 X 0.84 X 4 = 13.80 SQ.M
 4. 1.45 X 5.05 = 7.32 SQ.M
 5. 1.83 X 1.83 X 2 = 6.70 SQ.M
 6. 1.91 X 0.96 X 2 = 3.67 SQ.M
 7. 1.14 X 5.05 = 5.74 SQ.M
 TOTAL DEDUCTIONS = 48.81 SQ.M
 NET AREA = 280.36 - 48.81 = 231.55 SQ.M

FLOORS

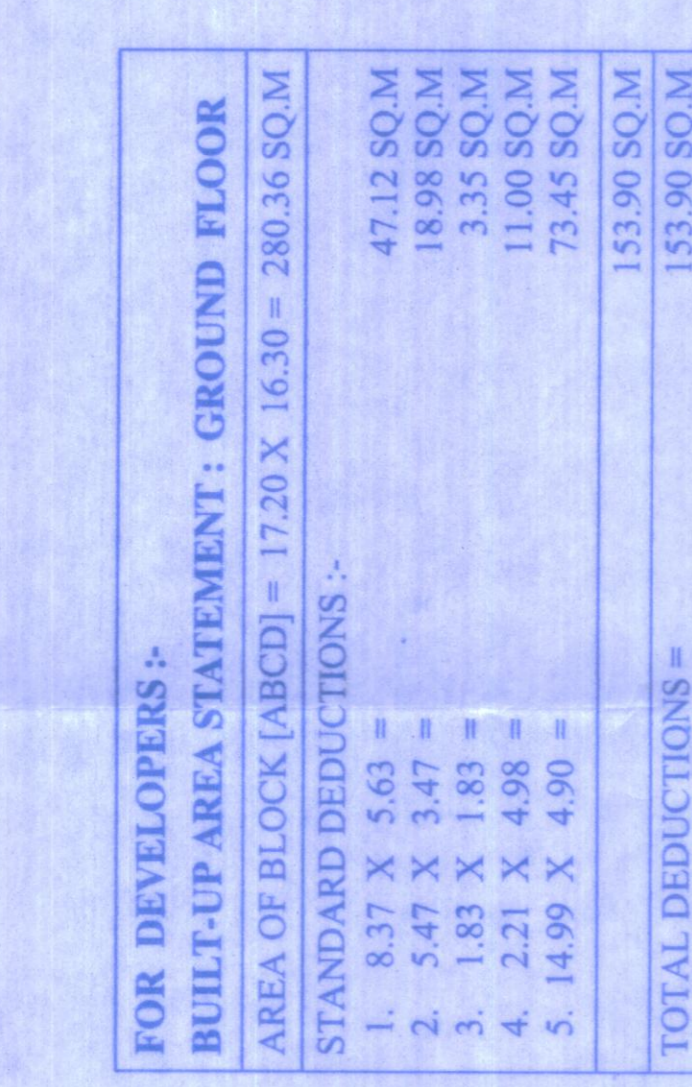
FLOORS	SHOP NO.	CARPET AREA AS PER PERA	LOFT AREA	CARPET AREA
GROUND FLOOR	1	15.41 sqm.	5.13 sqm.	10.28 sqm.
	2	13.72 sqm.	4.57 sqm.	9.15 sqm.
	3	15.41 sqm.	5.13 sqm.	10.28 sqm.
	4	17.15 sqm.	4.57 sqm.	12.58 sqm.
	5	15.41 sqm.	5.13 sqm.	10.28 sqm.

FLOORS

FLOORS	OFFICE NO.	CARPET AREA AS PER PERA
1ST & 2ND FLOORS	1	15.18 sqm.
	2	9.46 sqm.
	3	16.69 sqm.
	4	11.78 sqm.
	5	9.46 sqm.
	6	15.18 sqm.
	7	16.69 sqm.
	8	9.46 sqm.
	9	15.18 sqm.

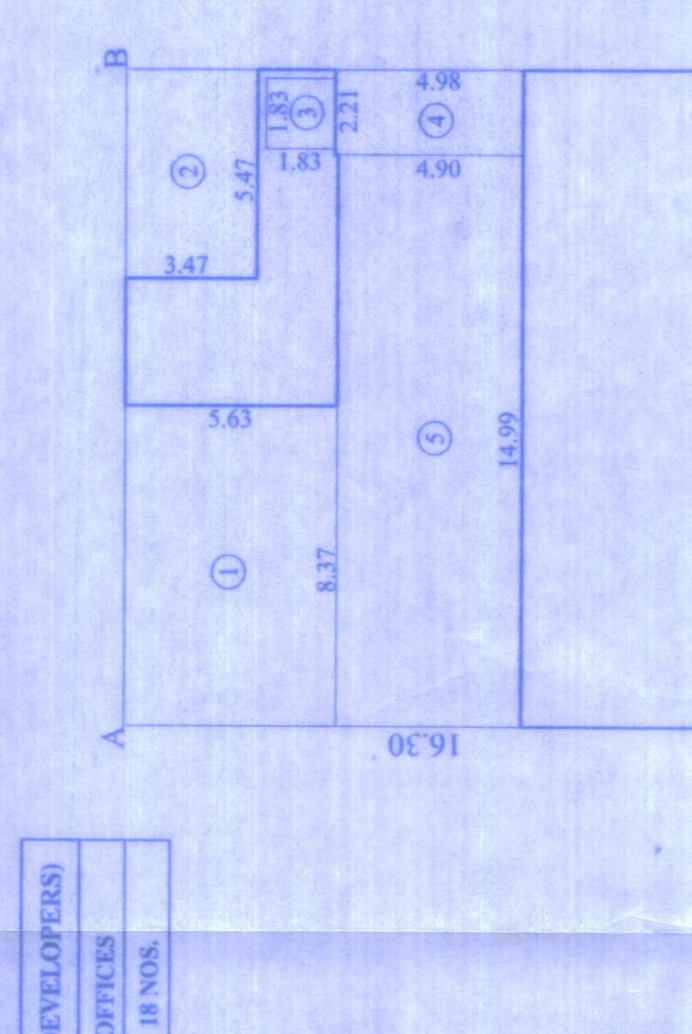
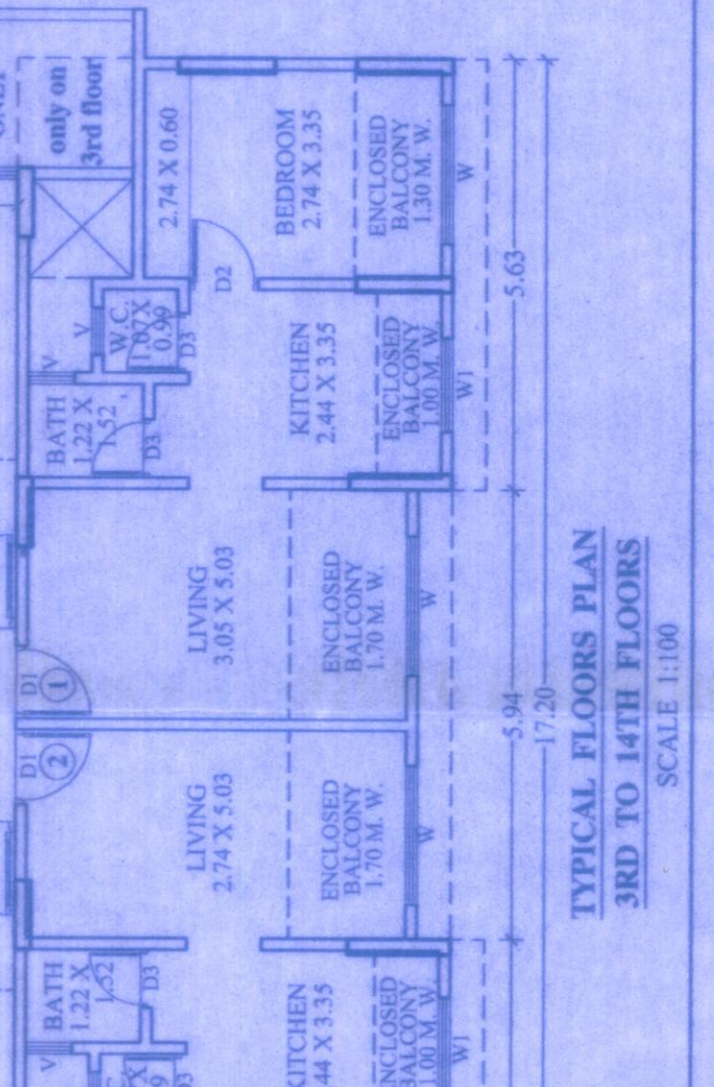
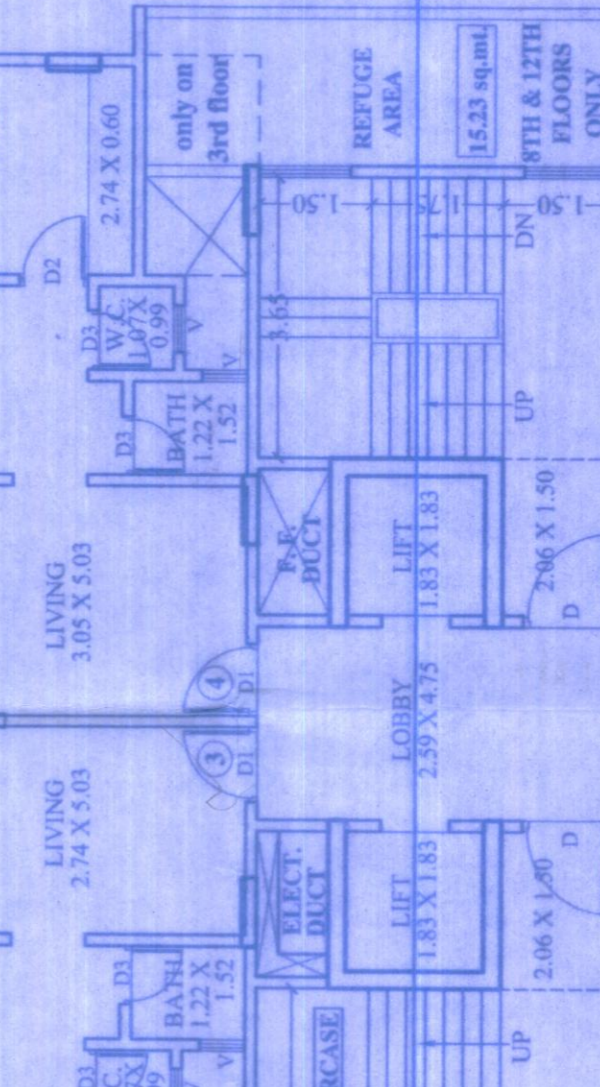
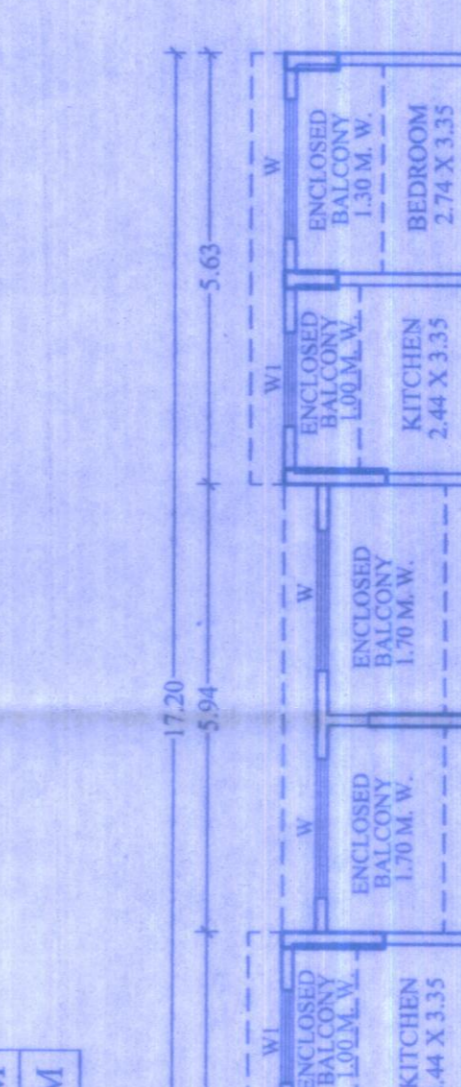
FLOORS

FLOORS	FLAT	CARPET AREA AS PER PERA	ENCLOSED BALCONY AREA
3RD TO 14TH FLOORS	1	29.62 sqm.	10.14 sqm.
	2	28.07 sqm.	9.66 sqm.
	3	28.07 sqm.	9.66 sqm.
	4	29.62 sqm.	10.14 sqm.



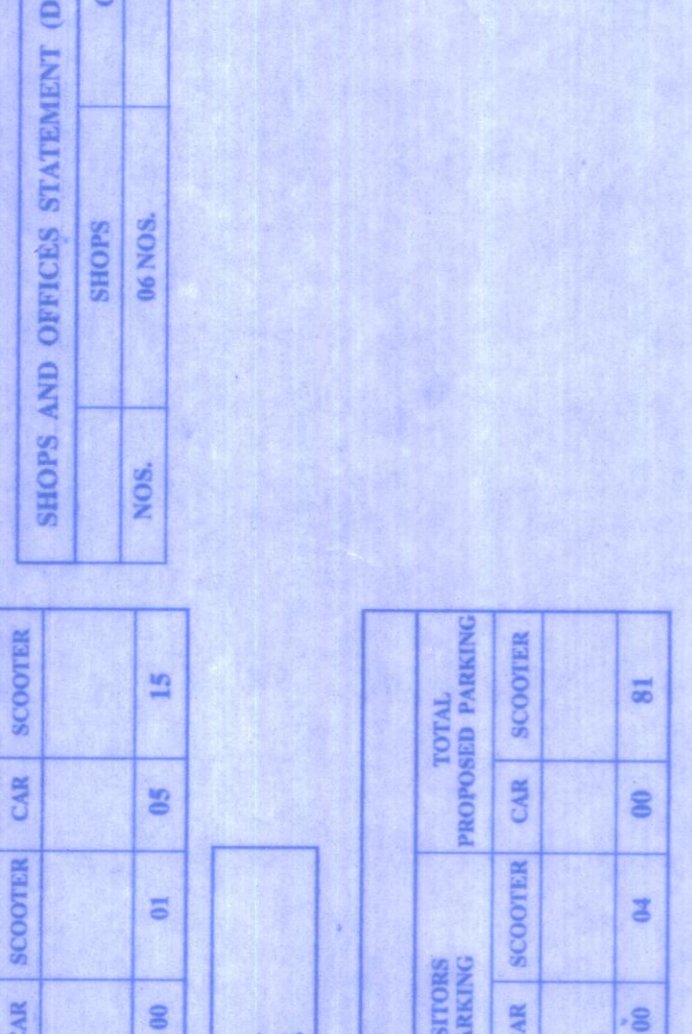
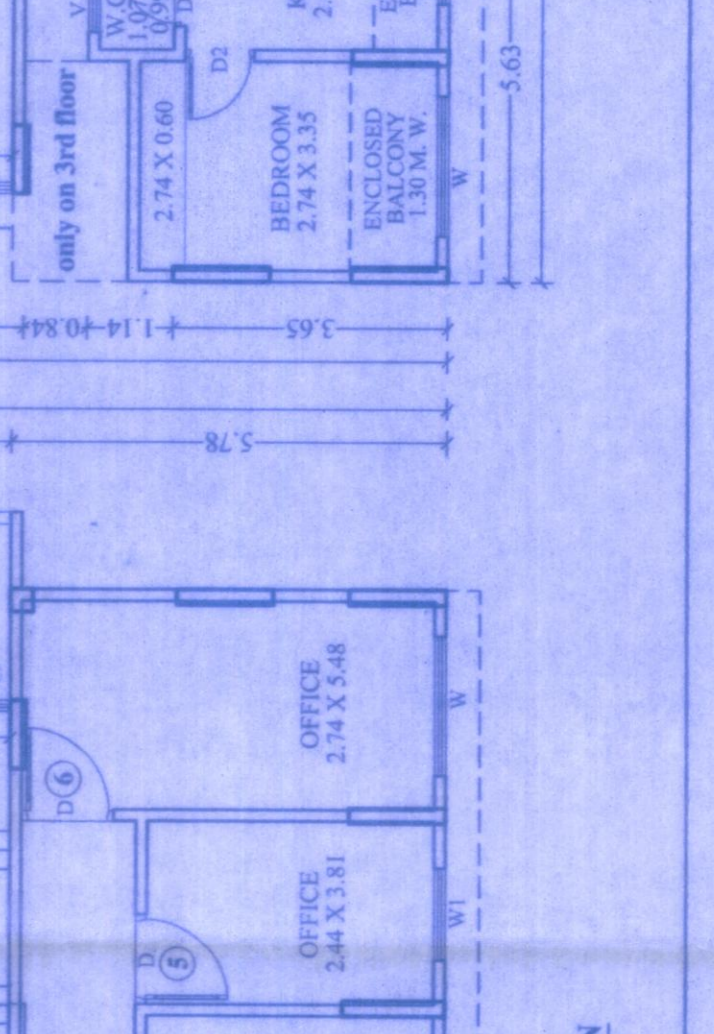
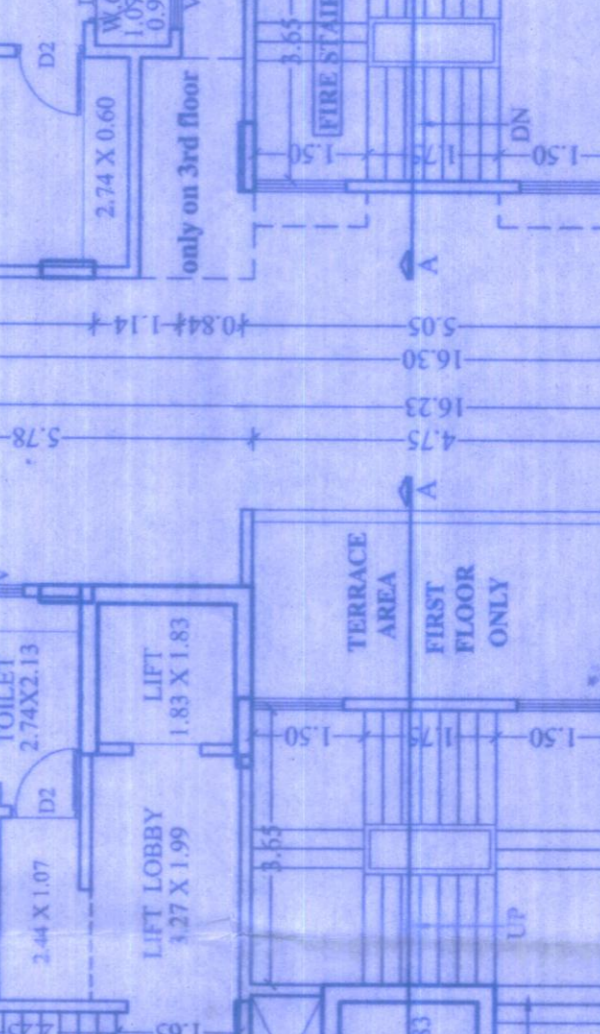
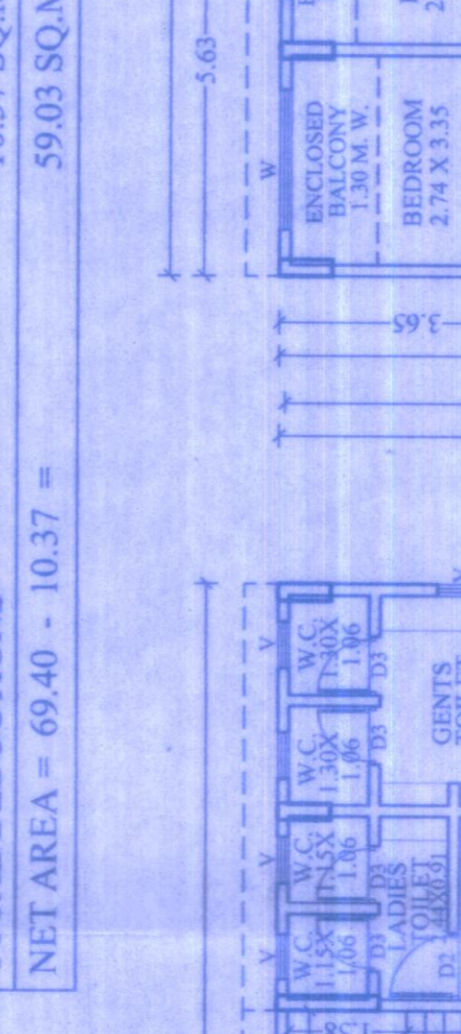
FOR MHADA:-
 BUILT-UP AREA STATEMENT: GROUND FLOOR
 AREA OF BLOCK (ABCD) = 17.05 X 5.13 = 87.46 SQ.M
 STANDARD DEDUCTIONS:-
 1. 13.85 X 0.08 = 1.11 SQ.M
 2. 0.99 X 0.08 = 0.08 SQ.M
 3. 16.06 X 0.15 = 2.41 SQ.M
 4. 1.83 X 1.83 X 2 = 6.70 SQ.M
 5. 1.91 X 0.96 X 2 = 3.67 SQ.M
 TOTAL DEDUCTIONS = 13.97 SQ.M
 NET AREA = 87.46 - 13.97 = 73.49 SQ.M

FOR MHADA:-
 BUILT-UP AREA STATEMENT: 1ST & 2ND FLOOR
 AREA OF BLOCK (ABCD) = 14.61 X 4.75 = 69.40 SQ.M
 STANDARD DEDUCTIONS:-
 1. 1.91 X 0.96 X 2 = 3.67 SQ.M
 2. 1.83 X 1.83 X 2 = 6.70 SQ.M
 TOTAL DEDUCTIONS = 10.37 SQ.M
 NET AREA = 69.40 - 10.37 = 59.03 SQ.M



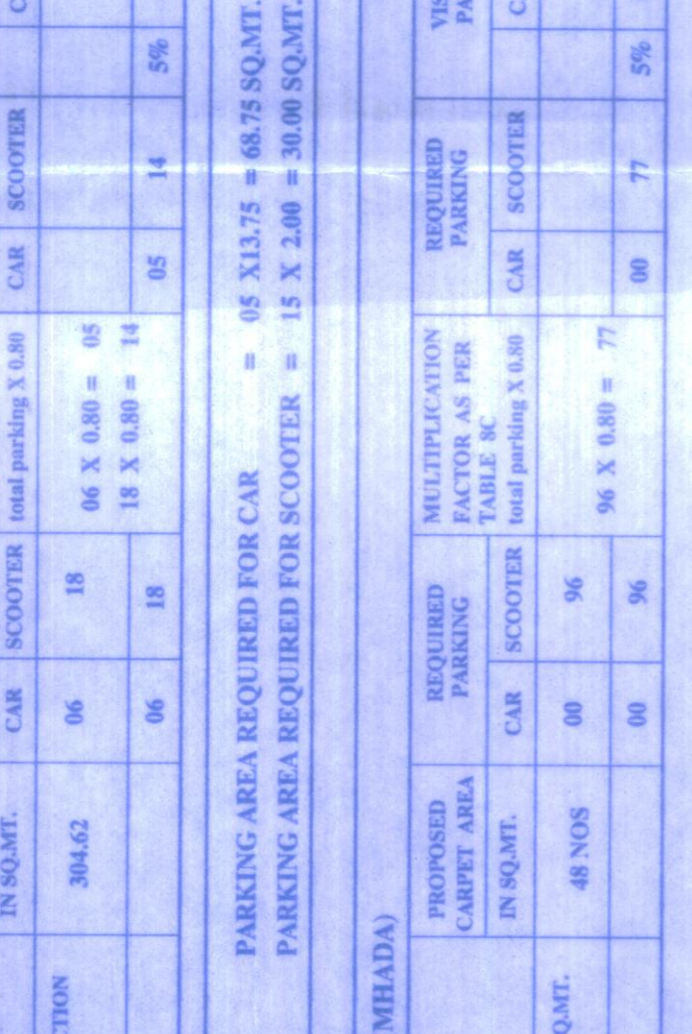
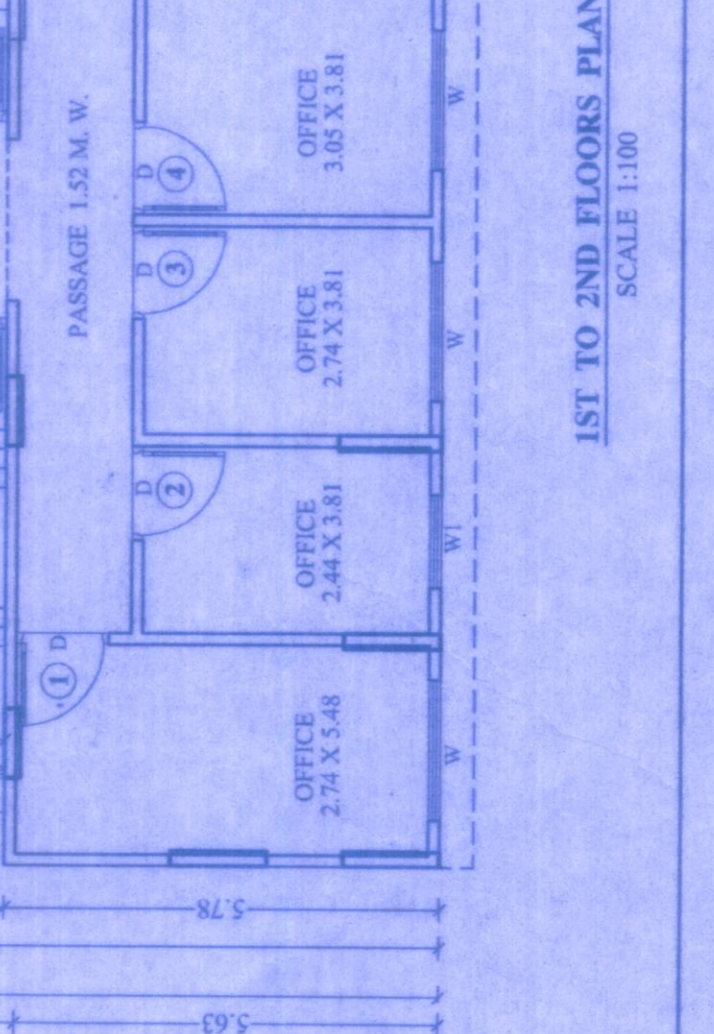
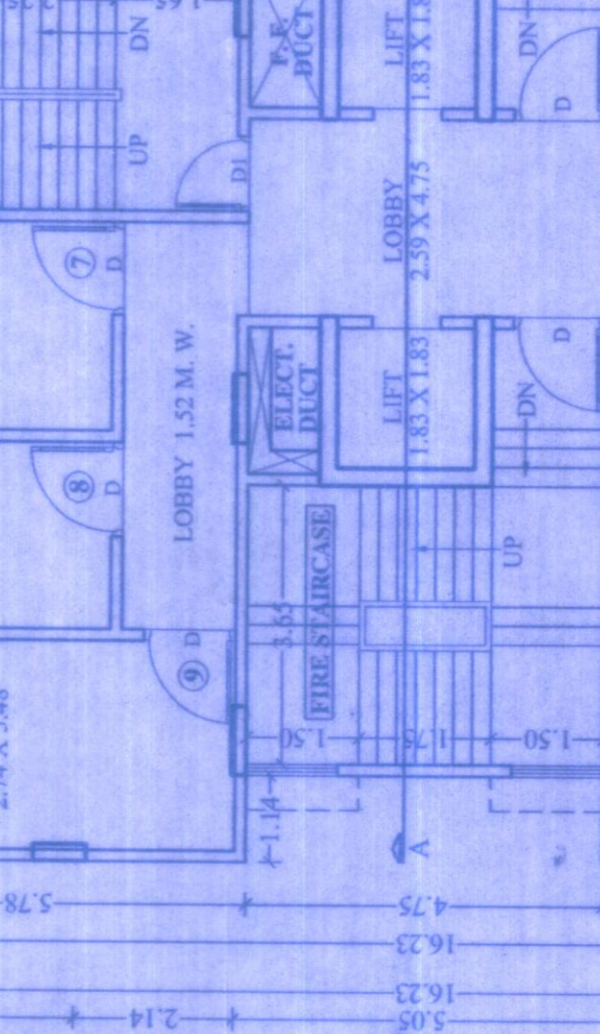
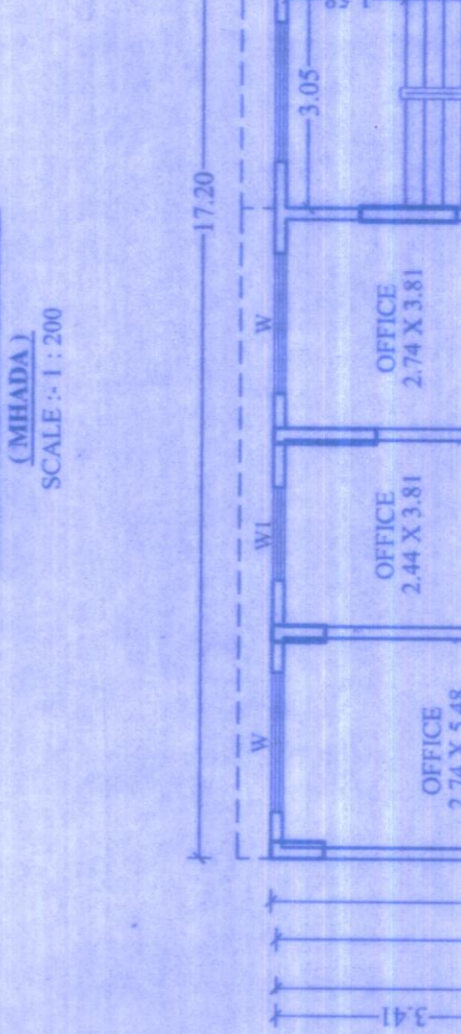
FOR MHADA:-
 BUILT-UP AREA STATEMENT: GROUND FLOOR
 AREA OF BLOCK (ABCD) = 17.05 X 5.13 = 87.46 SQ.M
 STANDARD DEDUCTIONS:-
 1. 13.85 X 0.08 = 1.11 SQ.M
 2. 0.99 X 0.08 = 0.08 SQ.M
 3. 16.06 X 0.15 = 2.41 SQ.M
 4. 1.83 X 1.83 X 2 = 6.70 SQ.M
 5. 1.91 X 0.96 X 2 = 3.67 SQ.M
 TOTAL DEDUCTIONS = 13.97 SQ.M
 NET AREA = 87.46 - 13.97 = 73.49 SQ.M

FOR MHADA:-
 BUILT-UP AREA STATEMENT: 1ST & 2ND FLOOR
 AREA OF BLOCK (ABCD) = 14.61 X 4.75 = 69.40 SQ.M
 STANDARD DEDUCTIONS:-
 1. 1.91 X 0.96 X 2 = 3.67 SQ.M
 2. 1.83 X 1.83 X 2 = 6.70 SQ.M
 TOTAL DEDUCTIONS = 10.37 SQ.M
 NET AREA = 69.40 - 10.37 = 59.03 SQ.M



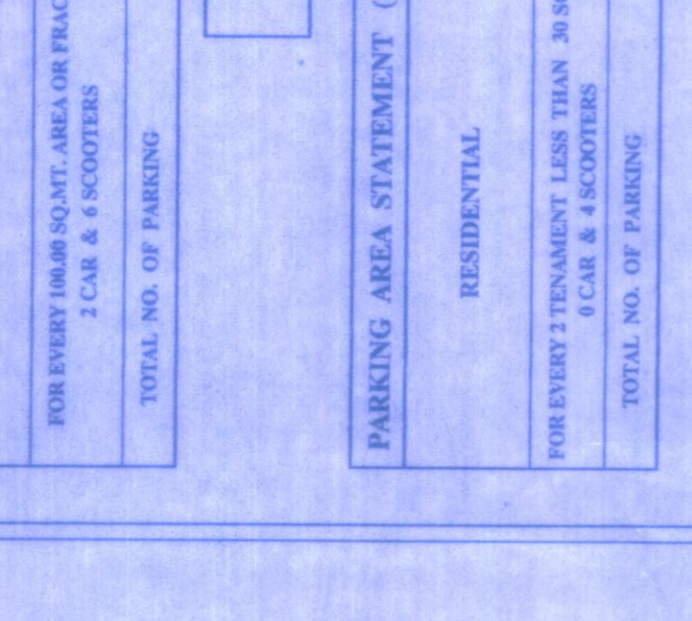
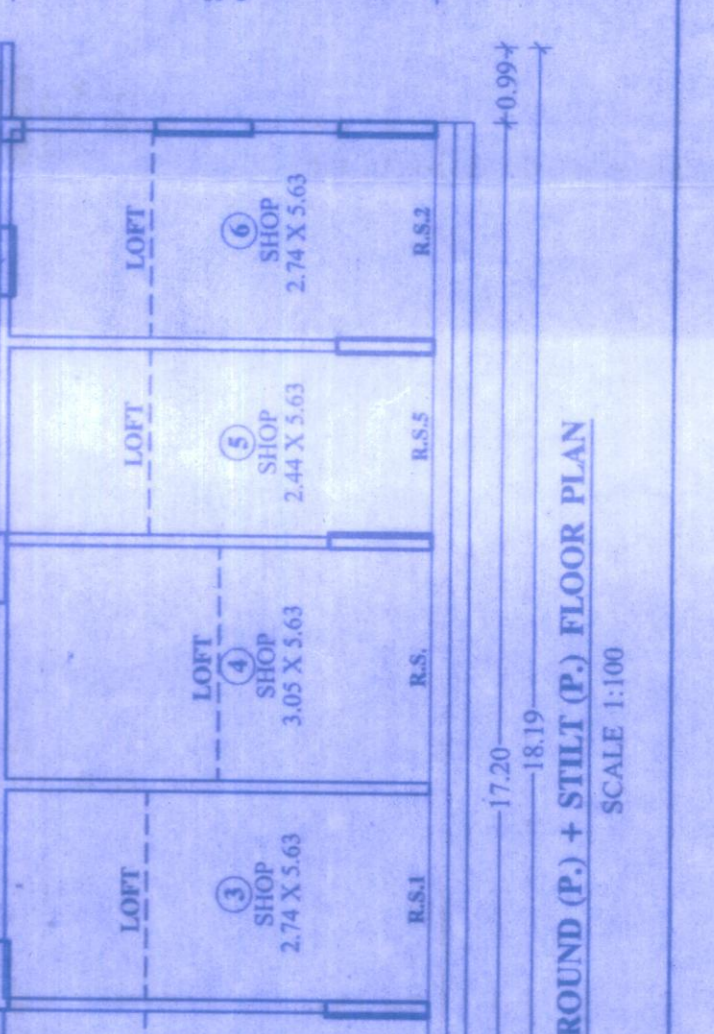
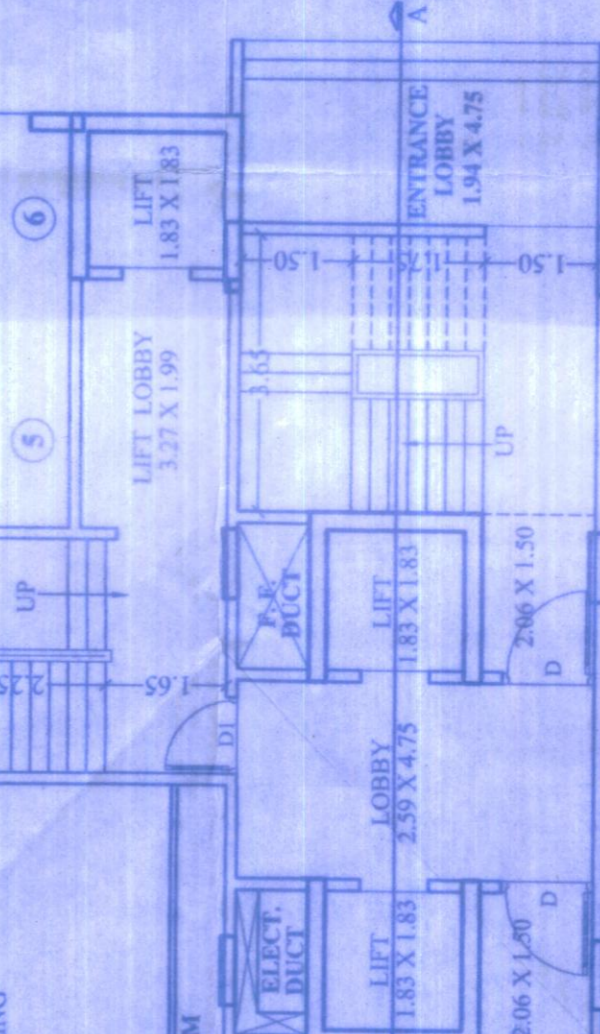
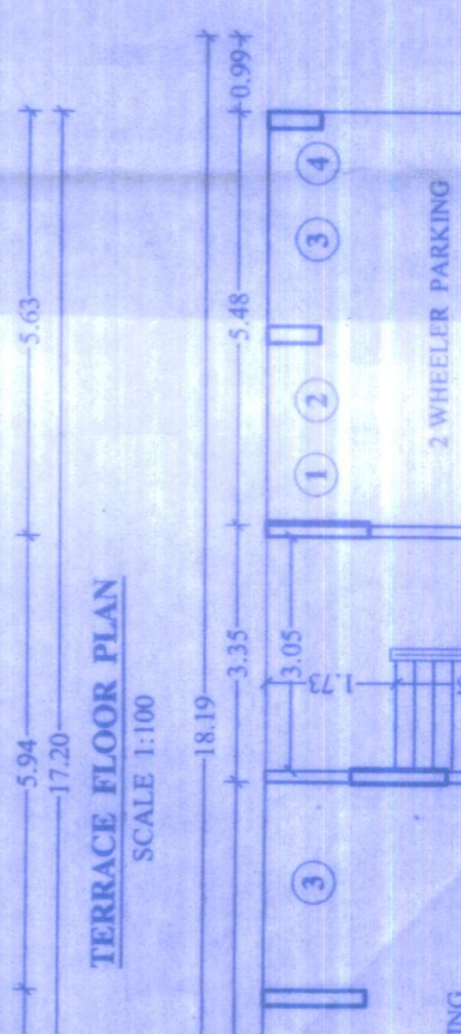
FOR MHADA:-
 BUILT-UP AREA STATEMENT: GROUND FLOOR
 AREA OF BLOCK (ABCD) = 17.05 X 5.13 = 87.46 SQ.M
 STANDARD DEDUCTIONS:-
 1. 13.85 X 0.08 = 1.11 SQ.M
 2. 0.99 X 0.08 = 0.08 SQ.M
 3. 16.06 X 0.15 = 2.41 SQ.M
 4. 1.83 X 1.83 X 2 = 6.70 SQ.M
 5. 1.91 X 0.96 X 2 = 3.67 SQ.M
 TOTAL DEDUCTIONS = 13.97 SQ.M
 NET AREA = 87.46 - 13.97 = 73.49 SQ.M

FOR MHADA:-
 BUILT-UP AREA STATEMENT: 1ST & 2ND FLOOR
 AREA OF BLOCK (ABCD) = 14.61 X 4.75 = 69.40 SQ.M
 STANDARD DEDUCTIONS:-
 1. 1.91 X 0.96 X 2 = 3.67 SQ.M
 2. 1.83 X 1.83 X 2 = 6.70 SQ.M
 TOTAL DEDUCTIONS = 10.37 SQ.M
 NET AREA = 69.40 - 10.37 = 59.03 SQ.M



FOR MHADA:-
 BUILT-UP AREA STATEMENT: GROUND FLOOR
 AREA OF BLOCK (ABCD) = 17.05 X 5.13 = 87.46 SQ.M
 STANDARD DEDUCTIONS:-
 1. 13.85 X 0.08 = 1.11 SQ.M
 2. 0.99 X 0.08 = 0.08 SQ.M
 3. 16.06 X 0.15 = 2.41 SQ.M
 4. 1.83 X 1.83 X 2 = 6.70 SQ.M
 5. 1.91 X 0.96 X 2 = 3.67 SQ.M
 TOTAL DEDUCTIONS = 13.97 SQ.M
 NET AREA = 87.46 - 13.97 = 73.49 SQ.M

FOR MHADA:-
 BUILT-UP AREA STATEMENT: 1ST & 2ND FLOOR
 AREA OF BLOCK (ABCD) = 14.61 X 4.75 = 69.40 SQ.M
 STANDARD DEDUCTIONS:-
 1. 1.91 X 0.96 X 2 = 3.67 SQ.M
 2. 1.83 X 1.83 X 2 = 6.70 SQ.M
 TOTAL DEDUCTIONS = 10.37 SQ.M
 NET AREA = 69.40 - 10.37 = 59.03 SQ.M



FOR MHADA:-
 BUILT-UP AREA STATEMENT: GROUND FLOOR
 AREA OF BLOCK (ABCD) = 17.05 X 5.13 = 87.46 SQ.M
 STANDARD DEDUCTIONS:-
 1. 13.85 X 0.08 = 1.11 SQ.M
 2. 0.99 X 0.08 = 0.08 SQ.M
 3. 16.06 X 0.15 = 2.41 SQ.M
 4. 1.83 X 1.83 X 2 = 6.70 SQ.M
 5. 1.91 X 0.96 X 2 = 3.67 SQ.M
 TOTAL DEDUCTIONS = 13.97 SQ.M
 NET AREA = 87.46 - 13.97 = 73.49 SQ.M

FOR MHADA:-
 BUILT-UP AREA STATEMENT: 1ST & 2ND FLOOR
 AREA OF BLOCK (ABCD) = 14.61 X 4.75 = 69.40 SQ.M
 STANDARD DEDUCTIONS:-
 1. 1.91 X 0.96 X 2 = 3.67 SQ.M
 2. 1.83 X 1.83 X 2 = 6.70 SQ.M
 TOTAL DEDUCTIONS = 10.37 SQ.M
 NET AREA = 69.40 - 10.37 = 59.03 SQ.M

