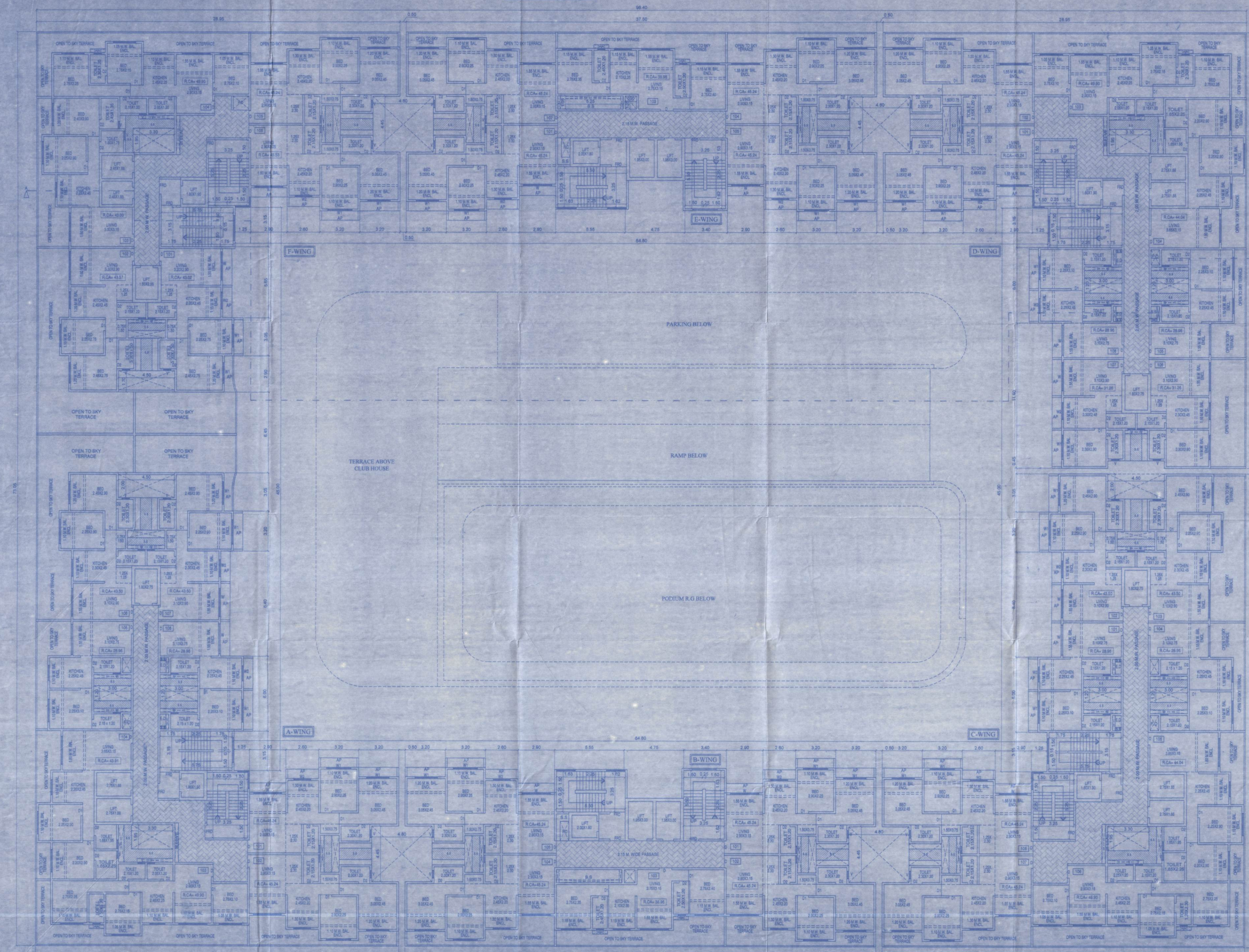


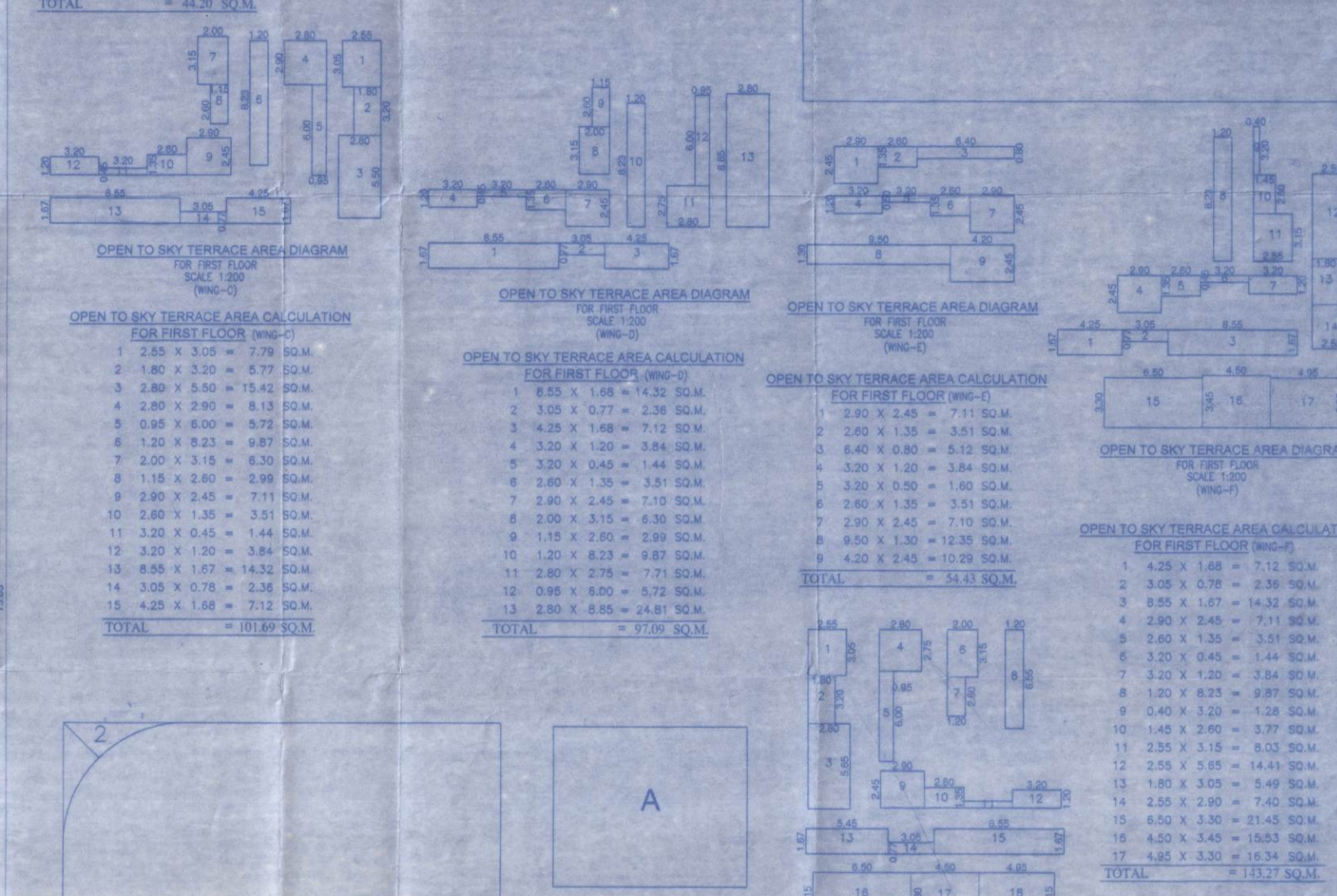
A.P. AREA CALCULATION FOR FIRST FLOOR (WING-A)		A.P. AREA CALCULATION FOR FIRST FLOOR (WING-B)		A.P. AREA CALCULATION FOR FIRST FLOOR (WING-C)		A.P. AREA CALCULATION FOR FIRST FLOOR (WING-D)		A.P. AREA CALCULATION FOR FIRST FLOOR (WING-E)		A.P. AREA CALCULATION FOR FIRST FLOOR (WING-F)	
1	3.20 X 0.75 = 2.40 SQ.M.	1	3.20 X 0.75 = 2.40 SQ.M.	1	3.20 X 0.75 = 2.40 SQ.M.	1	3.20 X 0.75 = 2.40 SQ.M.	1	3.20 X 0.75 = 2.40 SQ.M.	1	3.20 X 0.75 = 2.40 SQ.M.
2	3.20 X 0.75 = 2.40 SQ.M.	2	3.20 X 0.75 = 2.40 SQ.M.	2	3.20 X 0.75 = 2.40 SQ.M.	2	3.20 X 0.75 = 2.40 SQ.M.	2	3.20 X 0.75 = 2.40 SQ.M.	2	3.20 X 0.75 = 2.40 SQ.M.
3	2.60 X 0.75 = 1.95 SQ.M.	3	2.60 X 0.75 = 1.95 SQ.M.	3	2.60 X 0.75 = 1.95 SQ.M.	3	2.60 X 0.75 = 1.95 SQ.M.	3	2.60 X 0.75 = 1.95 SQ.M.	3	2.60 X 0.75 = 1.95 SQ.M.
4	2.90 X 0.75 = 2.18 SQ.M.	4	2.90 X 0.75 = 2.18 SQ.M.	4	2.90 X 0.75 = 2.18 SQ.M.	4	2.90 X 0.75 = 2.18 SQ.M.	4	2.90 X 0.75 = 2.18 SQ.M.	4	2.90 X 0.75 = 2.18 SQ.M.
5	0.75 X 3.05 = 2.29 SQ.M.	5	0.75 X 3.05 = 2.29 SQ.M.	5	0.75 X 3.05 = 2.29 SQ.M.	5	0.75 X 3.05 = 2.29 SQ.M.	5	0.75 X 3.05 = 2.29 SQ.M.	5	0.75 X 3.05 = 2.29 SQ.M.
6	0.75 X 3.20 = 2.40 SQ.M.	6	0.75 X 3.20 = 2.40 SQ.M.	6	0.75 X 3.20 = 2.40 SQ.M.	6	0.75 X 3.20 = 2.40 SQ.M.	6	0.75 X 3.20 = 2.40 SQ.M.	6	0.75 X 3.20 = 2.40 SQ.M.
7	0.75 X 2.90 = 2.18 SQ.M.	7	0.75 X 2.90 = 2.18 SQ.M.	7	0.75 X 2.90 = 2.18 SQ.M.	7	0.75 X 2.90 = 2.18 SQ.M.	7	0.75 X 2.90 = 2.18 SQ.M.	7	0.75 X 2.90 = 2.18 SQ.M.
8	0.75 X 5.50 = 4.13 SQ.M.	8	0.75 X 5.50 = 4.13 SQ.M.	8	0.75 X 5.50 = 4.13 SQ.M.	8	0.75 X 5.50 = 4.13 SQ.M.	8	0.75 X 5.50 = 4.13 SQ.M.	8	0.75 X 5.50 = 4.13 SQ.M.
9	0.75 X 6.00 = 4.50 SQ.M.	9	0.75 X 6.00 = 4.50 SQ.M.	9	0.75 X 6.00 = 4.50 SQ.M.	9	0.75 X 6.00 = 4.50 SQ.M.	9	0.75 X 6.00 = 4.50 SQ.M.	9	0.75 X 6.00 = 4.50 SQ.M.
TOTAL = 24.43 SQ.M.		TOTAL = 17.86 SQ.M.		TOTAL = 24.43 SQ.M.		TOTAL = 22.73 SQ.M.		TOTAL = 17.86 SQ.M.		TOTAL = 17.86 SQ.M.	



FIRST FLOOR PLAN SCALE 1:100

A.P. AREA CALCULATION FOR FIRST FLOOR (WING-G)		A.P. AREA CALCULATION FOR FIRST FLOOR (WING-H)		A.P. AREA CALCULATION FOR FIRST FLOOR (WING-I)	
1	3.20 X 0.75 = 2.40 SQ.M.	1	3.20 X 0.75 = 2.40 SQ.M.	1	3.20 X 0.75 = 2.40 SQ.M.
2	3.20 X 0.75 = 2.40 SQ.M.	2	3.20 X 0.75 = 2.40 SQ.M.	2	3.20 X 0.75 = 2.40 SQ.M.
3	2.60 X 0.75 = 1.95 SQ.M.	3	2.60 X 0.75 = 1.95 SQ.M.	3	2.60 X 0.75 = 1.95 SQ.M.
4	2.90 X 0.75 = 2.18 SQ.M.	4	2.90 X 0.75 = 2.18 SQ.M.	4	2.90 X 0.75 = 2.18 SQ.M.
5	0.75 X 3.05 = 2.29 SQ.M.	5	0.75 X 3.05 = 2.29 SQ.M.	5	0.75 X 3.05 = 2.29 SQ.M.
6	0.75 X 3.20 = 2.40 SQ.M.	6	0.75 X 3.20 = 2.40 SQ.M.	6	0.75 X 3.20 = 2.40 SQ.M.
7	0.75 X 2.90 = 2.18 SQ.M.	7	0.75 X 2.90 = 2.18 SQ.M.	7	0.75 X 2.90 = 2.18 SQ.M.
8	0.75 X 5.50 = 4.13 SQ.M.	8	0.75 X 5.50 = 4.13 SQ.M.	8	0.75 X 5.50 = 4.13 SQ.M.
9	0.75 X 6.00 = 4.50 SQ.M.	9	0.75 X 6.00 = 4.50 SQ.M.	9	0.75 X 6.00 = 4.50 SQ.M.
TOTAL = 24.43 SQ.M.		TOTAL = 17.86 SQ.M.		TOTAL = 17.86 SQ.M.	

A.P. AREA CALCULATION FOR 2ND, 3RD, 4TH, 5TH, 6TH, 7TH, 8TH, 9TH, 10TH, 11TH, 12TH, 13TH, 14TH, 15TH, 16TH, 17TH, 18TH, 19TH, 20TH, 21ST, 22ND, 23RD, 24TH, 25TH, 26TH, 27TH FLOOR (WING-A)		A.P. AREA CALCULATION FOR 2ND, 3RD, 4TH, 5TH, 6TH, 7TH, 8TH, 9TH, 10TH, 11TH, 12TH, 13TH, 14TH, 15TH, 16TH, 17TH, 18TH, 19TH, 20TH, 21ST, 22ND, 23RD, 24TH, 25TH, 26TH, 27TH FLOOR (WING-B)		A.P. AREA CALCULATION FOR 2ND, 3RD, 4TH, 5TH, 6TH, 7TH, 8TH, 9TH, 10TH, 11TH, 12TH, 13TH, 14TH, 15TH, 16TH, 17TH, 18TH, 19TH, 20TH, 21ST, 22ND, 23RD, 24TH, 25TH, 26TH, 27TH FLOOR (WING-C)	
1	3.20 X 0.75 = 2.40 SQ.M.	1	3.20 X 0.75 = 2.40 SQ.M.	1	3.20 X 0.75 = 2.40 SQ.M.
2	3.20 X 0.75 = 2.40 SQ.M.	2	3.20 X 0.75 = 2.40 SQ.M.	2	3.20 X 0.75 = 2.40 SQ.M.
3	2.60 X 0.75 = 1.95 SQ.M.	3	2.60 X 0.75 = 1.95 SQ.M.	3	2.60 X 0.75 = 1.95 SQ.M.
4	2.90 X 0.75 = 2.18 SQ.M.	4	2.90 X 0.75 = 2.18 SQ.M.	4	2.90 X 0.75 = 2.18 SQ.M.
5	0.75 X 3.05 = 2.29 SQ.M.	5	0.75 X 3.05 = 2.29 SQ.M.	5	0.75 X 3.05 = 2.29 SQ.M.
6	0.75 X 3.20 = 2.40 SQ.M.	6	0.75 X 3.20 = 2.40 SQ.M.	6	0.75 X 3.20 = 2.40 SQ.M.
7	0.75 X 2.90 = 2.18 SQ.M.	7	0.75 X 2.90 = 2.18 SQ.M.	7	0.75 X 2.90 = 2.18 SQ.M.
8	0.75 X 5.50 = 4.13 SQ.M.	8	0.75 X 5.50 = 4.13 SQ.M.	8	0.75 X 5.50 = 4.13 SQ.M.
9	0.75 X 6.00 = 4.50 SQ.M.	9	0.75 X 6.00 = 4.50 SQ.M.	9	0.75 X 6.00 = 4.50 SQ.M.
TOTAL = 24.43 SQ.M.		TOTAL = 17.86 SQ.M.		TOTAL = 17.86 SQ.M.	



A.P. AREA CALCULATION FOR FIRST FLOOR (WING-D)		A.P. AREA CALCULATION FOR FIRST FLOOR (WING-E)		A.P. AREA CALCULATION FOR FIRST FLOOR (WING-F)	
1	3.20 X 0.75 = 2.40 SQ.M.	1	3.20 X 0.75 = 2.40 SQ.M.	1	3.20 X 0.75 = 2.40 SQ.M.
2	3.20 X 0.75 = 2.40 SQ.M.	2	3.20 X 0.75 = 2.40 SQ.M.	2	3.20 X 0.75 = 2.40 SQ.M.
3	2.60 X 0.75 = 1.95 SQ.M.	3	2.60 X 0.75 = 1.95 SQ.M.	3	2.60 X 0.75 = 1.95 SQ.M.
4	2.90 X 0.75 = 2.18 SQ.M.	4	2.90 X 0.75 = 2.18 SQ.M.	4	2.90 X 0.75 = 2.18 SQ.M.
5	0.75 X 3.05 = 2.29 SQ.M.	5	0.75 X 3.05 = 2.29 SQ.M.	5	0.75 X 3.05 = 2.29 SQ.M.
6	0.75 X 3.20 = 2.40 SQ.M.	6	0.75 X 3.20 = 2.40 SQ.M.	6	0.75 X 3.20 = 2.40 SQ.M.
7	0.75 X 2.90 = 2.18 SQ.M.	7	0.75 X 2.90 = 2.18 SQ.M.	7	0.75 X 2.90 = 2.18 SQ.M.
8	0.75 X 5.50 = 4.13 SQ.M.	8	0.75 X 5.50 = 4.13 SQ.M.	8	0.75 X 5.50 = 4.13 SQ.M.
9	0.75 X 6.00 = 4.50 SQ.M.	9	0.75 X 6.00 = 4.50 SQ.M.	9	0.75 X 6.00 = 4.50 SQ.M.
TOTAL = 24.43 SQ.M.		TOTAL = 17.86 SQ.M.		TOTAL = 17.86 SQ.M.	

BUILT UP AREA DIAGRAM FOR FIRST FLOOR SCALE 1:100

STAMP OF APPROVALS OF PLAN
 Approved as amended in Subject to the Conditions mentioned in this Office Letter No. VVCM/TP/AM/18/2012-13
 VVCM/TP/AM/18/2012-13
 Dated: 21/03/2012
 Commissioner
 Virar Municipal Corporation
 Virar (E.S.), Pin No. 401 305, Dist. Palghar
 Deputy Director, VVCM, Virar.

DESCRIPTION OF PROPOSAL & PROPERTY
 PROPOSED GROUP HOUSING SCHEME
 AT VILLAGE, GOKHIWAD, TALUKA, VASAI, DIST. PALGHAR
 NAME OF APPLICANT
 SHRI. DEVENDRA R. LADHANI
 (P.A. HOLDER)
 DATE 28/06/2012
 SCALE AS SHOWN
 DRAWN BY SWAPNALI DEO
 CHECKED BY
 JOB NO. 3/1754/2012
 DRC NO. 1754/2012/BLD-3
 WING-A TO F
 SHEET NO. 9/10

AGREED & SIGNED BY
 SANAT MEHTA & Associates
 RAMESHWAR TOWER, 103,
 SHIVAJI ROAD,
 CHANDRANAGAR, VASAI,
 DIST. PALGHAR
 PHONE NO. VVCM/EN/1192
 Licensed Engineer