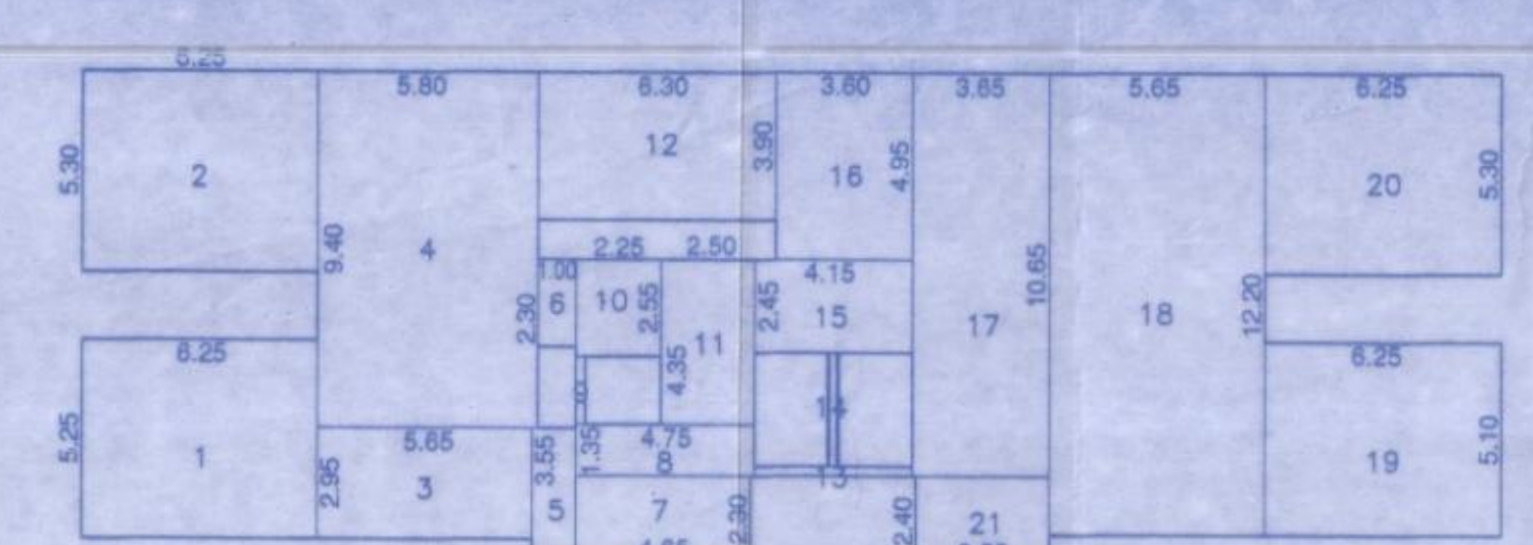


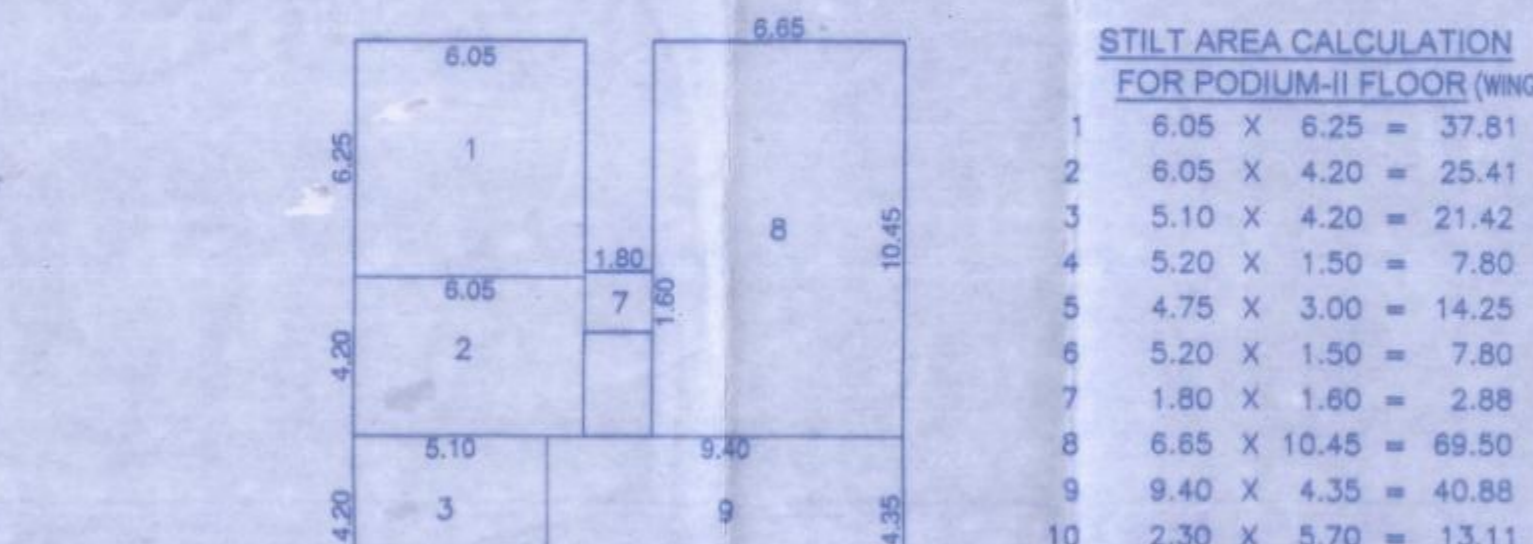
PODIUM-II FLOOR PLAN
SCALE 1:100



STILT AREA DIAGRAM FOR PODIUM-I FLOOR SCALE 1:200 (WING-I)

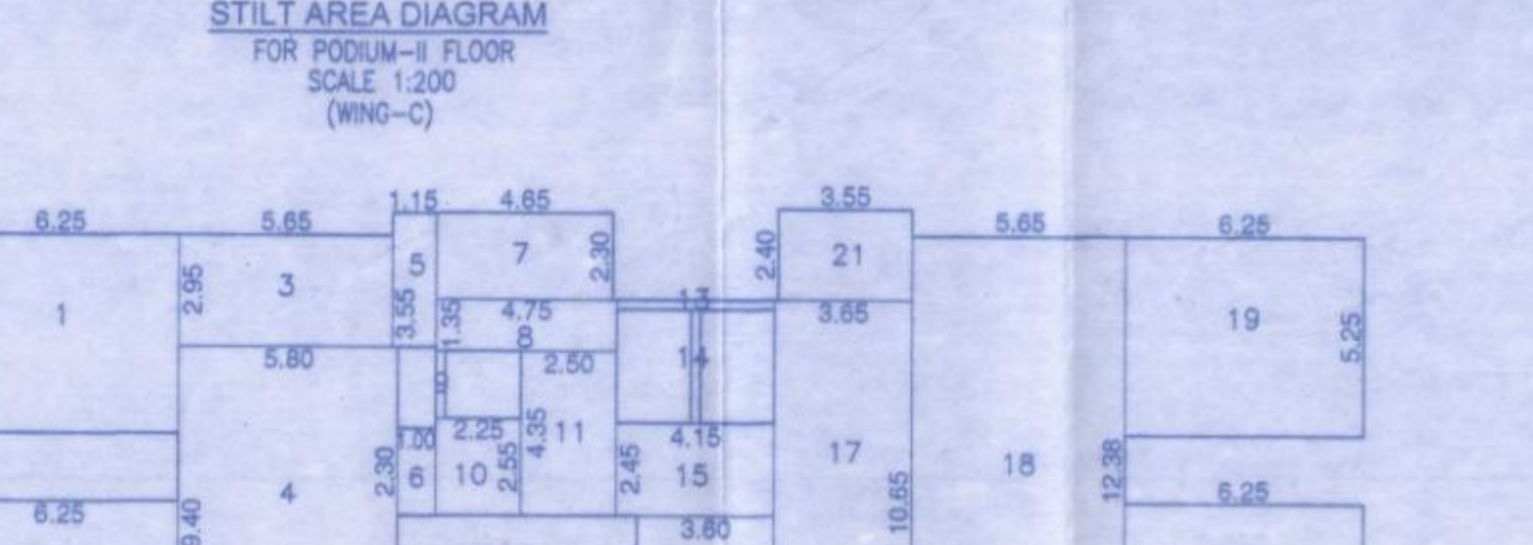
STILT AREA CALCULATION FOR PODIUM-I FLOOR (WING-I)

1	6.25 X 5.25 = 32.81 SQ.M.	12	6.30 X 3.90 = 24.57 SQ.M.
2	6.25 X 5.30 = 26.09 SQ.M.	13	4.15 X 0.25 = 1.04 SQ.M.
3	5.65 X 2.95 = 16.67 SQ.M.	14	0.25 X 3.00 = 0.75 SQ.M.
4	5.80 X 0.40 = 0.45 SQ.M.	15	4.15 X 2.45 = 17.64 SQ.M.
5	1.15 X 3.55 = 4.08 SQ.M.	16	3.60 X 4.95 = 17.82 SQ.M.
6	1.00 X 2.30 = 2.30 SQ.M.	17	3.65 X 10.65 = 38.87 SQ.M.
7	4.65 X 2.30 = 10.70 SQ.M.	18	5.65 X 12.20 = 68.93 SQ.M.
8	4.75 X 1.35 = 6.41 SQ.M.	19	6.25 X 3.10 = 31.88 SQ.M.
9	0.25 X 1.80 = 0.45 SQ.M.	20	6.25 X 6.30 = 39.38 SQ.M.
10	2.25 X 2.55 = 5.74 SQ.M.	21	3.55 X 2.40 = 8.52 SQ.M.
11	2.50 X 4.35 = 10.88 SQ.M.	TOTAL	= 415.80 SQ.M.



STILT AREA CALCULATION FOR PODIUM-II FLOOR (WING-II)

1	6.05 X 6.25 = 37.81 SQ.M.	11	5.70 X 1.35 = 7.70 SQ.M.
2	6.05 X 4.20 = 25.41 SQ.M.	12	4.80 X 3.00 = 14.40 SQ.M.
3	5.10 X 4.20 = 21.42 SQ.M.	13	1.80 X 1.60 = 2.88 SQ.M.
4	5.20 X 1.50 = 7.80 SQ.M.	14	6.65 X 10.45 = 69.50 SQ.M.
5	4.75 X 3.00 = 14.25 SQ.M.	15	3.00 X 3.55 = 10.65 SQ.M.
6	5.30 X 1.50 = 7.95 SQ.M.	16	6.40 X 3.50 = 22.40 SQ.M.
7	1.80 X 1.60 = 2.88 SQ.M.	17	6.25 X 5.30 = 33.13 SQ.M.
8	6.65 X 10.45 = 69.50 SQ.M.	18	6.25 X 5.30 = 33.13 SQ.M.
9	9.40 X 4.35 = 40.88 SQ.M.	19	5.70 X 1.35 = 7.70 SQ.M.
10	2.30 X 5.70 = 13.11 SQ.M.	20	4.80 X 3.00 = 14.40 SQ.M.
11	5.70 X 1.35 = 7.70 SQ.M.	21	1.80 X 2.20 = 3.96 SQ.M.
12	4.80 X 3.00 = 14.40 SQ.M.	22	4.00 X 4.10 = 16.40 SQ.M.
13	5.70 X 1.35 = 7.70 SQ.M.	23	2.75 X 0.20 = 0.55 SQ.M.
14	5.20 X 3.40 = 17.68 SQ.M.	24	1.00 X 0.20 = 0.20 SQ.M.
15	3.00 X 3.55 = 10.65 SQ.M.	25	3.65 X 3.95 = 14.42 SQ.M.
16	6.40 X 3.50 = 22.40 SQ.M.	26	4.40 X 8.47 = 37.27 SQ.M.
17	6.25 X 5.30 = 33.13 SQ.M.	27	4.80 X 0.47 = 2.27 SQ.M.
18	6.25 X 5.30 = 33.13 SQ.M.	28	5.40 X 8.66 = 46.84 SQ.M.
19	5.70 X 1.35 = 7.70 SQ.M.	TOTAL	= 627.70 SQ.M.



STILT AREA CALCULATION FOR PODIUM-I FLOOR (WING-I)

1	6.25 X 5.30 = 33.13 SQ.M.	11	2.50 X 4.35 = 10.88 SQ.M.
2	6.25 X 5.30 = 33.13 SQ.M.	12	6.30 X 3.90 = 24.57 SQ.M.
3	5.65 X 2.95 = 16.67 SQ.M.	13	4.15 X 0.25 = 1.04 SQ.M.
4	5.80 X 0.40 = 0.45 SQ.M.	14	0.25 X 3.00 = 0.75 SQ.M.
5	1.15 X 3.55 = 4.08 SQ.M.	15	4.15 X 2.45 = 17.64 SQ.M.
6	1.00 X 2.30 = 2.30 SQ.M.	16	3.60 X 4.95 = 17.82 SQ.M.
7	4.65 X 2.30 = 10.70 SQ.M.	17	3.65 X 10.65 = 38.87 SQ.M.
8	4.75 X 1.35 = 6.41 SQ.M.	18	5.65 X 12.20 = 68.93 SQ.M.
9	0.25 X 1.80 = 0.45 SQ.M.	19	6.25 X 3.10 = 31.88 SQ.M.
10	2.25 X 2.55 = 5.74 SQ.M.	20	6.25 X 6.30 = 39.38 SQ.M.
11	2.50 X 4.35 = 10.88 SQ.M.	21	3.55 X 2.40 = 8.52 SQ.M.
TOTAL	= 458.38 SQ.M.		



STILT AREA CALCULATION FOR PODIUM-II FLOOR (WING-II)

1	6.25 X 5.30 = 33.13 SQ.M.	11	2.50 X 4.35 = 10.88 SQ.M.
2	6.25 X 5.30 = 33.13 SQ.M.	12	6.30 X 3.90 = 24.57 SQ.M.
3	5.65 X 2.95 = 16.67 SQ.M.	13	4.15 X 0.25 = 1.04 SQ.M.
4	5.80 X 0.40 = 0.45 SQ.M.	14	0.25 X 3.00 = 0.75 SQ.M.
5	1.15 X 3.55 = 4.08 SQ.M.	15	4.15 X 2.45 = 17.64 SQ.M.
6	1.00 X 2.30 = 2.30 SQ.M.	16	3.60 X 4.95 = 17.82 SQ.M.
7	4.65 X 2.30 = 10.70 SQ.M.	17	3.65 X 10.65 = 38.87 SQ.M.
8	4.75 X 1.35 = 6.41 SQ.M.	18	5.65 X 12.20 = 68.93 SQ.M.
9	0.25 X 1.80 = 0.45 SQ.M.	19	6.25 X 3.10 = 31.88 SQ.M.
10	2.25 X 2.55 = 5.74 SQ.M.	20	6.25 X 6.30 = 39.38 SQ.M.
11	2.50 X 4.35 = 10.88 SQ.M.	21	3.55 X 2.40 = 8.52 SQ.M.
TOTAL	= 458.38 SQ.M.		

STAMP OF APPROVALS OF PLAN
VP NO-0329
0815 & 0509
SECTOR-I
BLDG. NO. 3
WING - A TO F
SHEET NO-4/10

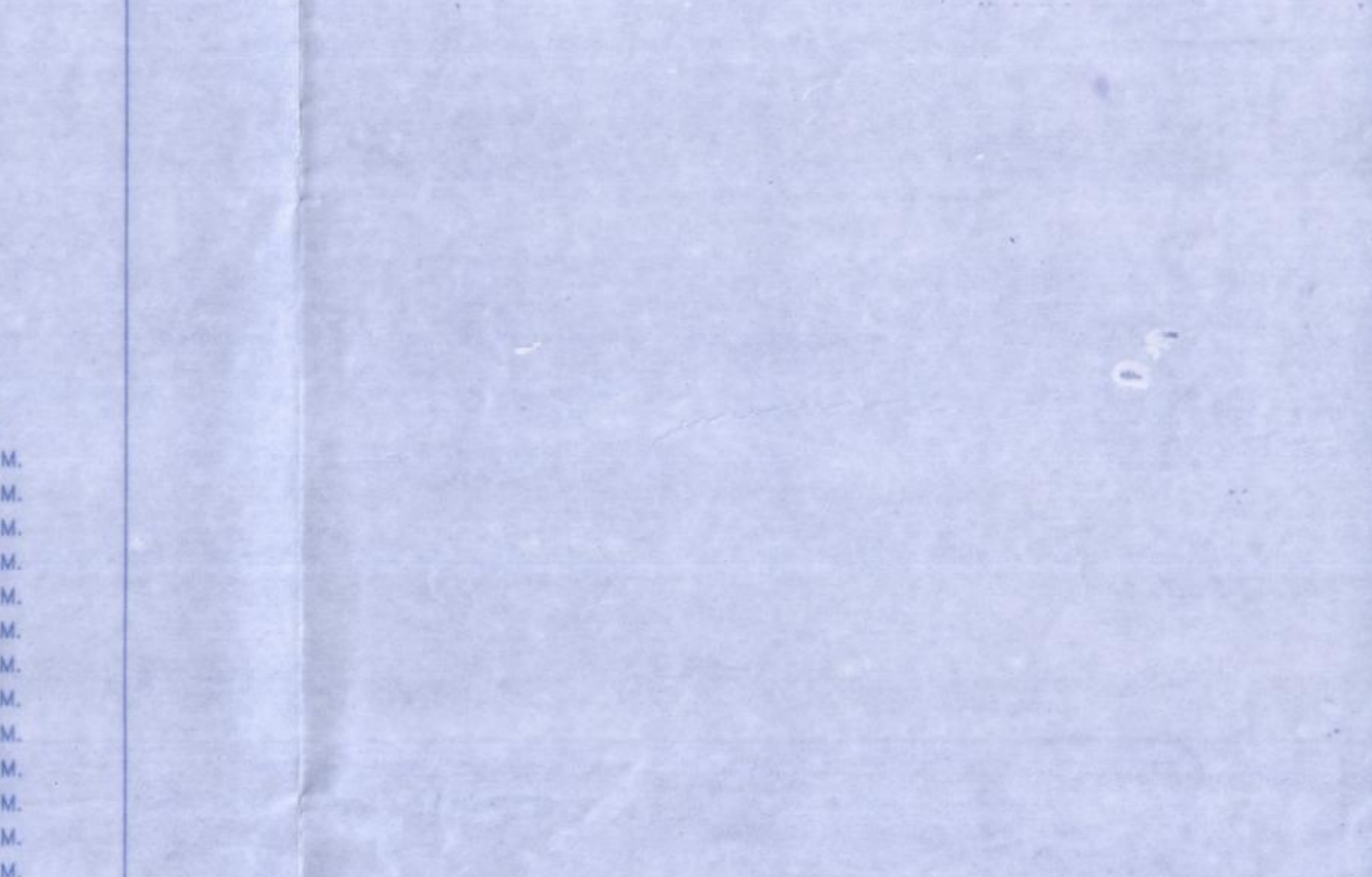
The amended plan duly approved herewith Superimposes all the earlier approved plans.
THIS PLAN SHALL NOT BE CONSIDERED AS PROOF OF OWNERSHIP FOR ANY DISPUTES IN ANY COURT OF LAW.

Approved as amended in Subject to the Conditions mentioned in this Office Letter No. VCCMC/FRM/2012/VP/0329/0815 & 0509/675/24/22/23 Dated: 21/03/2023

COMMISSIONER
VASAI-VIRAR CITY MUNICIPAL CORPORATION
Vasai, Pin No. 401 305, Dist. Palghar

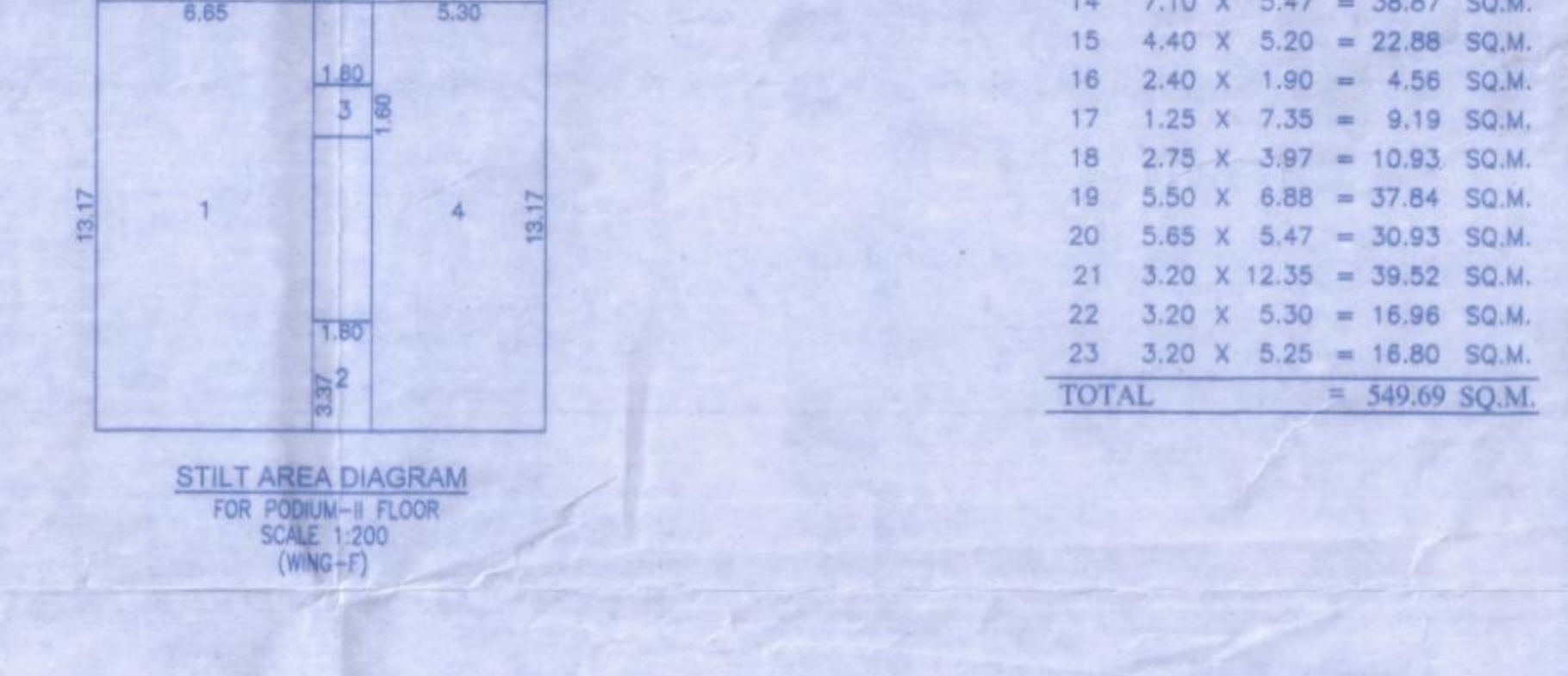
Certified that the above permission is issued by Commissioner (VCCMC), Virar.

Deputy Director,
VCCMC, Virar.



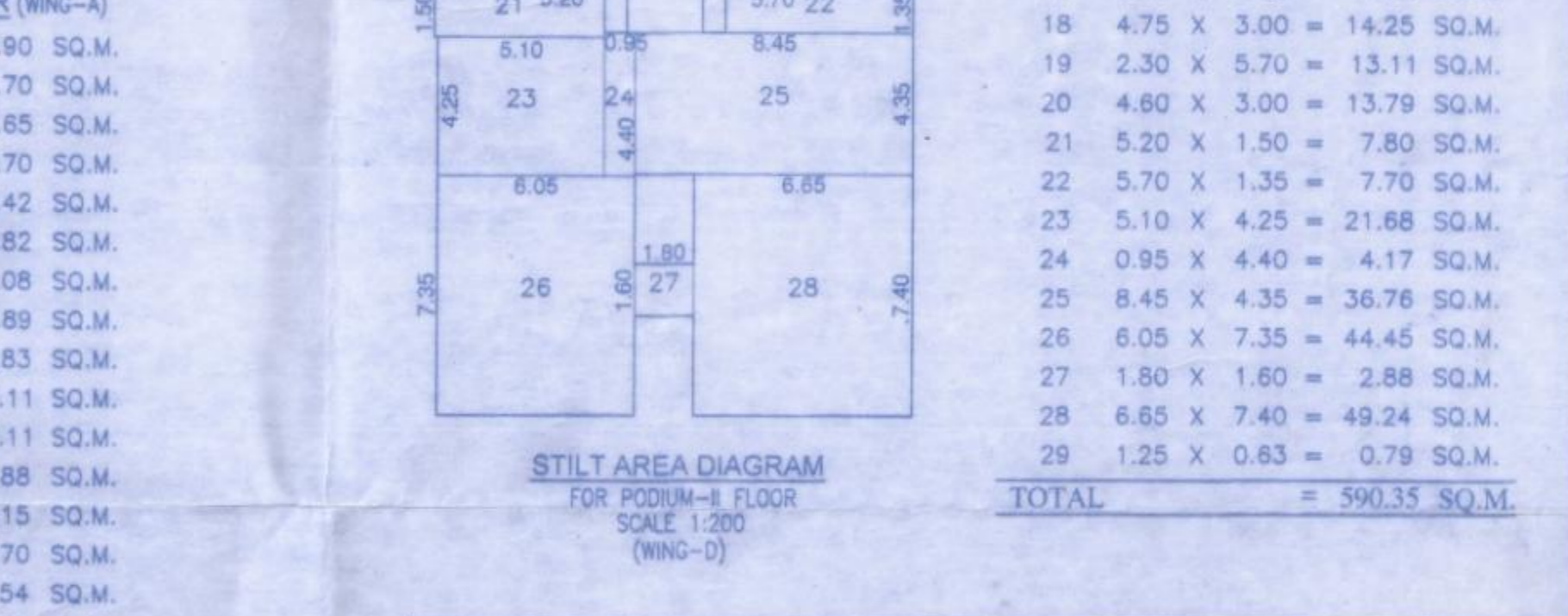
STILT AREA CALCULATION FOR PODIUM-I FLOOR (WING-I)

1	6.65 X 13.17 = 87.58 SQ.M.	11	5.70 X 1.35 = 7.70 SQ.M.
2	1.80 X 3.37 = 6.07 SQ.M.	12	4.80 X 3.00 = 14.40 SQ.M.
3	1.80 X 1.60 = 2.88 SQ.M.	13	1.80 X 1.60 = 2.88 SQ.M.
4	5.25 X 15.17 = 69.67 SQ.M.	14	6.65 X 10.45 = 69.50 SQ.M.
5	6.40 X 5.00 = 32.00 SQ.M.	15	3.00 X 3.55 = 10.65 SQ.M.
6	7.35 X 1.50 = 11.02 SQ.M.	16	6.40 X 3.50 = 22.40 SQ.M.
7	6.20 X 3.55 = 21.91 SQ.M.	17	6.25 X 5.30 = 33.13 SQ.M.
8	3.95 X 3.95 = 15.60 SQ.M.	18	6.25 X 5.30 = 33.13 SQ.M.
9	2.45 X 0.20 = 0.49 SQ.M.	19	5.70 X 1.35 = 7.70 SQ.M.
10	4.00 X 1.80 = 7.60 SQ.M.	20	4.80 X 3.00 = 14.40 SQ.M.
11	3.80 X 2.20 = 8.36 SQ.M.	21	1.80 X 2.20 = 3.96 SQ.M.
12	0.55 X 0.20 = 0.11 SQ.M.	22	4.00 X 4.10 = 16.40 SQ.M.
13	5.85 X 8.67 = 50.72 SQ.M.	23	2.75 X 0.20 = 0.55 SQ.M.
14	7.10 X 5.47 = 38.87 SQ.M.	24	1.00 X 0.20 = 0.20 SQ.M.
15	4.40 X 5.20 = 22.88 SQ.M.	25	3.65 X 3.95 = 14.42 SQ.M.
16	2.40 X 1.90 = 4.56 SQ.M.	26	4.40 X 8.47 = 37.27 SQ.M.
17	1.25 X 7.35 = 9.19 SQ.M.	27	4.80 X 0.47 = 2.27 SQ.M.
18	2.75 X 3.97 = 10.93 SQ.M.	28	5.40 X 8.66 = 46.84 SQ.M.
19	5.50 X 6.88 = 37.84 SQ.M.	TOTAL	= 549.69 SQ.M.
20	5.65 X 5.47 = 30.83 SQ.M.		
21	3.20 X 12.35 = 39.52 SQ.M.		
22	3.20 X 5.30 = 16.96 SQ.M.		
23	3.20 X 5.25 = 16.80 SQ.M.		



STILT AREA CALCULATION FOR PODIUM-I FLOOR (WING-I)

1	6.25 X 5.30 = 33.13 SQ.M.	11	2.50 X 4.35 = 10.88 SQ.M.
2	6.25 X 5.30 = 33.13 SQ.M.	12	6.30 X 3.90 = 24.57 SQ.M.
3	5.65 X 2.95 = 16.67 SQ.M.	13	4.15 X 0.25 = 1.04 SQ.M.
4	5.80 X 0.40 = 0.45 SQ.M.	14	0.25 X 3.00 = 0.75 SQ.M.
5	1.15 X 3.55 = 4.08 SQ.M.	15	4.15 X 2.45 = 17.64 SQ.M.
6	1.00 X 2.30 = 2.30 SQ.M.	16	3.60 X 4.95 = 17.82 SQ.M.
7	4.65 X 2.30 = 10.70 SQ.M.	17	3.65 X 10.65 = 38.87 SQ.M.
8	4.75 X 1.35 = 6.41 SQ.M.	18	5.65 X 12.20 = 68.93 SQ.M.
9	0.25 X 1.80 = 0.45 SQ.M.	19	6.25 X 3.10 = 31.88 SQ.M.
10	2.25 X 2.55 = 5.74 SQ.M.	20	6.25 X 6.30 = 39.38 SQ.M.
11	2.50 X 4.35 = 10.88 SQ.M.	21	3.55 X 2.40 = 8.52 SQ.M.
TOTAL	= 458.38 SQ.M.		



STILT AREA CALCULATION FOR PODIUM-II FLOOR (WING-II)

1	6.25 X 5.30 = 33.13 SQ.M.	11	2.50 X 4.35 = 10.88 SQ.M.
2	6.25 X 5.30 = 33.13 SQ.M.	12	6.30 X 3.90 = 24.57 SQ.M.
3	5.65 X 2.95 = 16.67 SQ.M.	13	4.15 X 0.25 = 1.04 SQ.M.
4	5.80 X 0.40 = 0.45 SQ.M.	14	0.25 X 3.00 = 0.75 SQ.M.
5	1.15 X 3.55 = 4.08 SQ.M.	15	4.15 X 2.45 = 17.64 SQ.M.
6	1.00 X 2.30 = 2.30 SQ.M.	16	3.60 X 4.95 = 17.82 SQ.M.
7	4.65 X 2.30 = 10.70 SQ.M.	17	3.65 X 10.65 = 38.87 SQ.M.
8	4.75 X 1.35 = 6.41 SQ.M.	18	5.65 X 12.20 = 68.93 SQ.M.
9	0.25 X 1.80 = 0.45 SQ.M.	19	6.25 X 3.10 = 31.88 SQ.M.
10	2.25 X 2.55 = 5.74 SQ.M.	20	6.25 X 6.30 = 39.38 SQ.M.
11	2.50 X 4.35 = 10.88 SQ.M.	21	3.55 X 2.40 = 8.52 SQ.M.
TOTAL	= 458.38 SQ.M.		

DESCRIPTION OF PROPOSAL & PROPERTY
PROPOSED GROUP HOUSING SCHEME
AT VILLAGE - GOKHIWARE, TALUKA - VASAI, DIST. PALGHAR

NAME OF APPLICANT
SHRI. DEVENDRA R. LADHANI
(P.A. HOLDER)

SIGNATURE OF APPLICANT

JOB NO. 4/1754/2012
DATE 28/06/2022

DRO NO. 1754/C/O/BLDG-3 WING-A TO F
SCALE AS SHOWN

DRAWN BY SWAPNALI DEO
CHECKED

LICENSED ENGINEER
sanat mehta & associates
201, PANDURANG NAGAR, CHANDRANAGAR, VASAI-VIRAR, DIST. PALGHAR

SHRIMPOLI ROAD,
NEXT TO GOVINDA SCHOOL,
BORIVALI (W) MUMBAI-400 092
PHONE NO. 98200 98200
VCCMC/FRM/2012/VP/0329/0815 & 0509/675/24/22/23