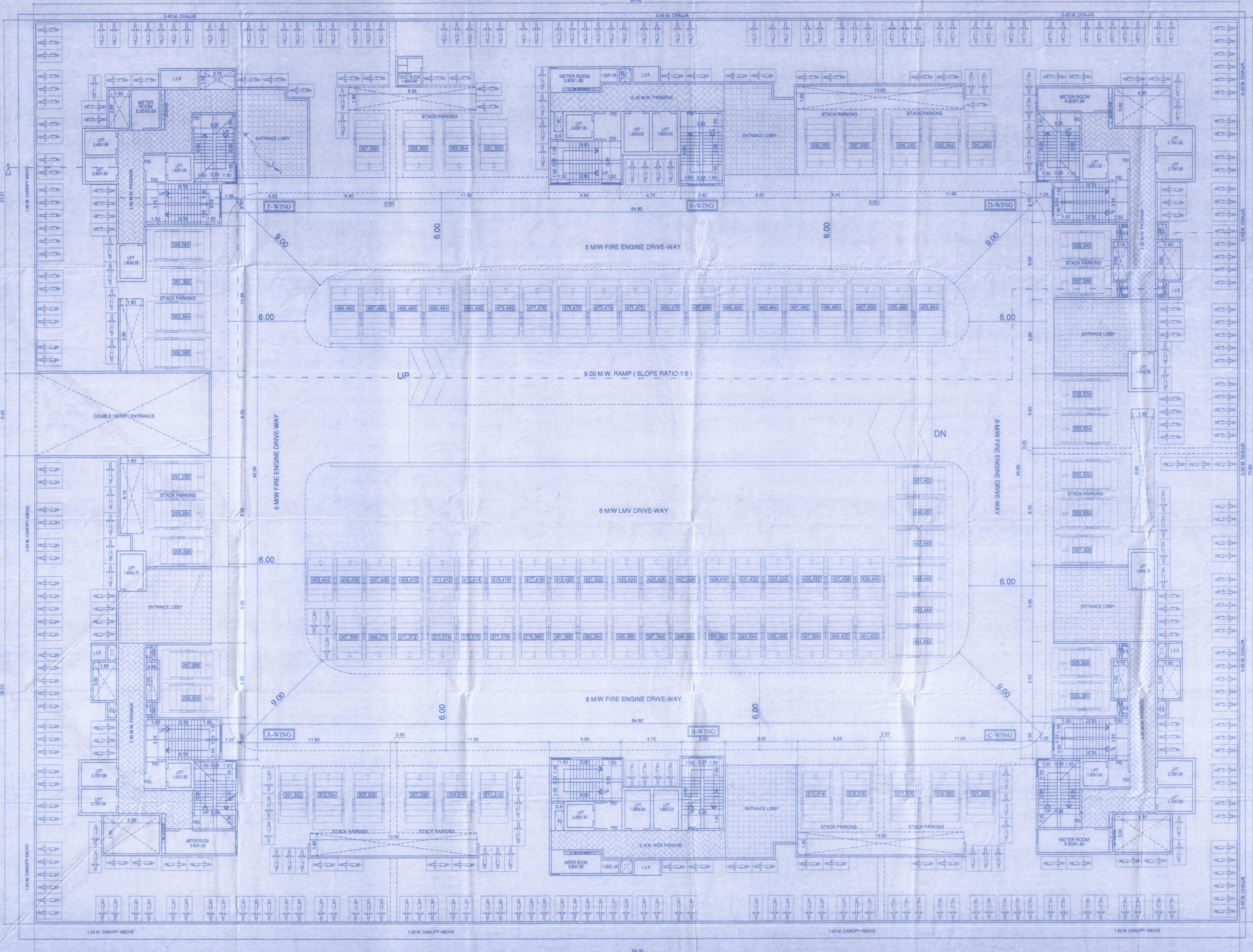
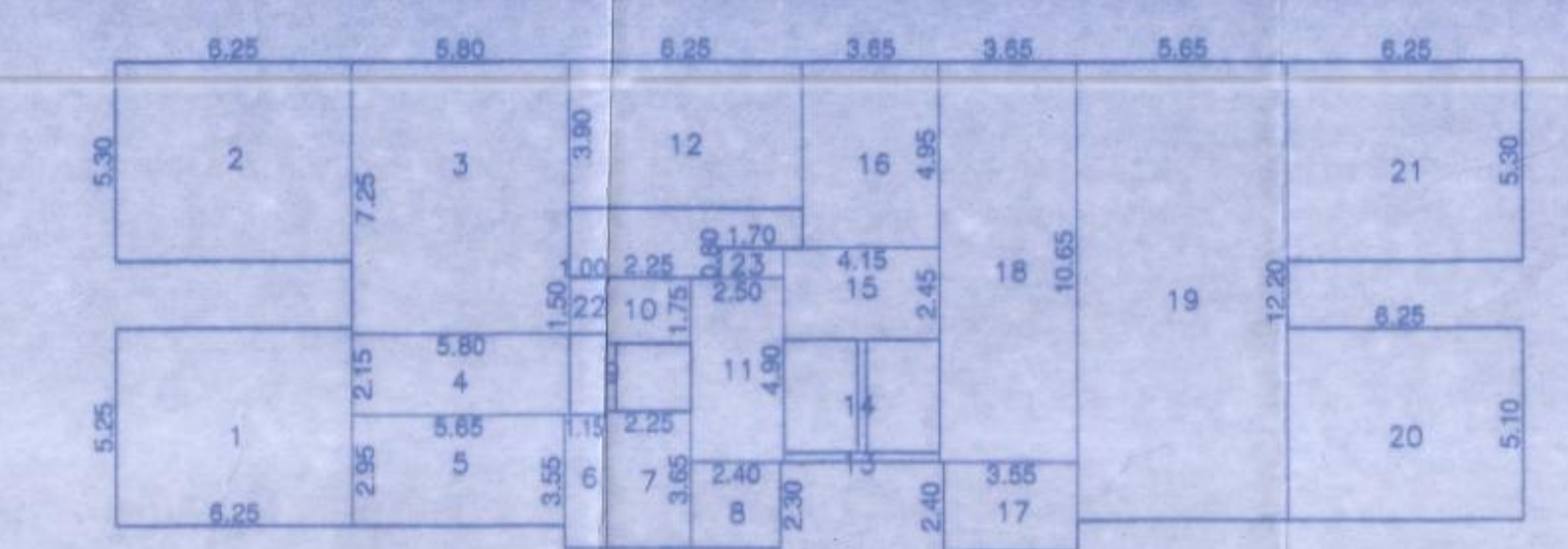


METER ROOM AREA DIAGRAM FOR PODIUM-I FLOOR SCALE 1:200 (WING-A)	METER ROOM AREA DIAGRAM FOR PODIUM-I FLOOR SCALE 1:200 (WING-B)	METER ROOM AREA DIAGRAM FOR PODIUM-I FLOOR SCALE 1:200 (WING-C)	METER ROOM AREA DIAGRAM FOR PODIUM-I FLOOR SCALE 1:200 (WING-D)	METER ROOM AREA DIAGRAM FOR PODIUM-I FLOOR SCALE 1:200 (WING-E)	METER ROOM AREA DIAGRAM FOR PODIUM-I FLOOR SCALE 1:200 (WING-F)
METER ROOM AREA CALCULATION FOR PODIUM-I FLOOR (WING-A)	METER ROOM AREA CALCULATION FOR PODIUM-I FLOOR (WING-B)	METER ROOM AREA CALCULATION FOR PODIUM-I FLOOR (WING-C)	METER ROOM AREA CALCULATION FOR PODIUM-I FLOOR (WING-D)	METER ROOM AREA CALCULATION FOR PODIUM-I FLOOR (WING-E)	METER ROOM AREA CALCULATION FOR PODIUM-I FLOOR (WING-F)
TOTAL = 10.18 SQ.M.	TOTAL = 7.49 SQ.M.	TOTAL = 11.87 SQ.M.	TOTAL = 11.87 SQ.M.	TOTAL = 7.49 SQ.M.	TOTAL = 7.35 SQ.M.

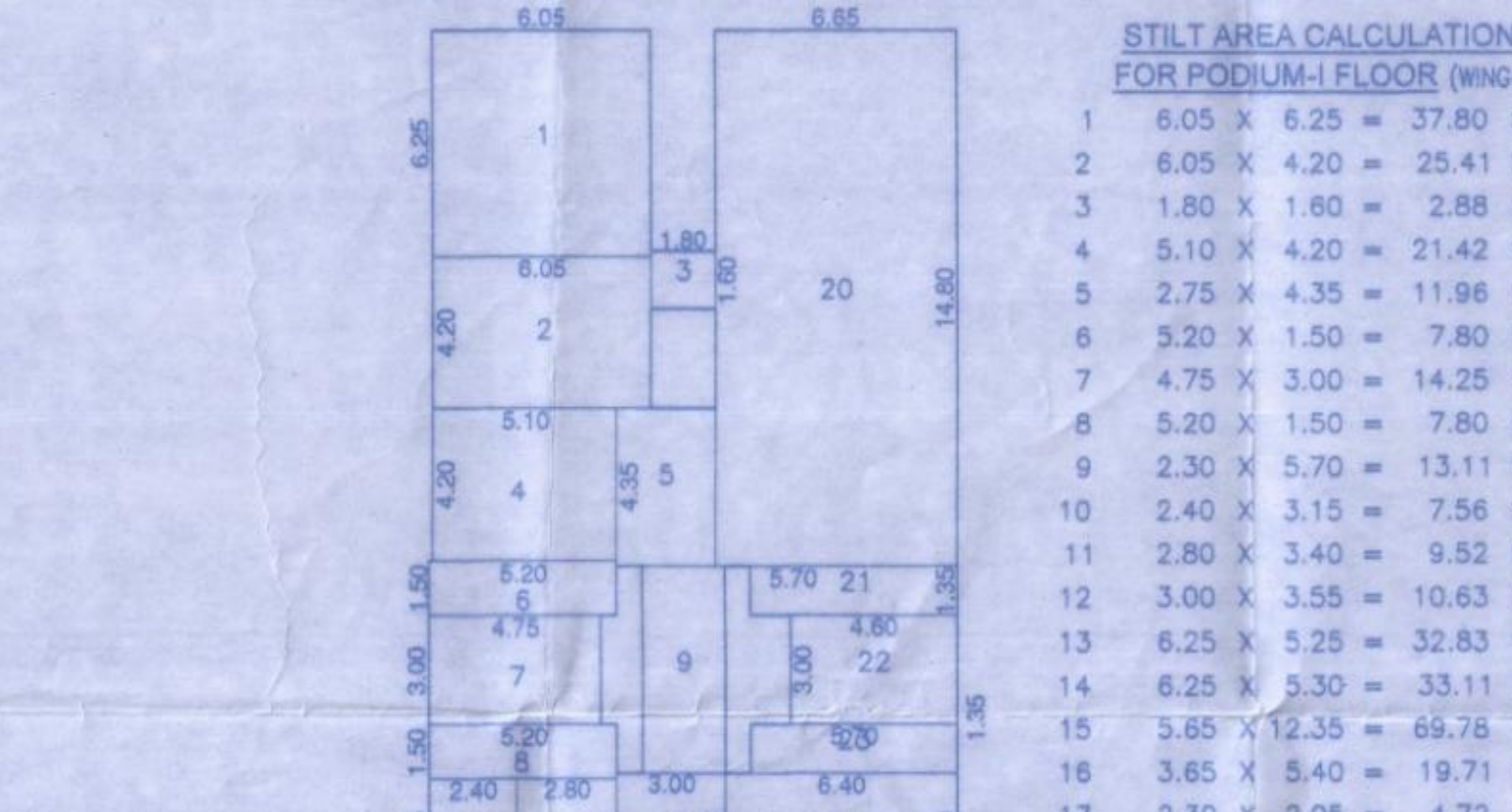


PODIUM-I FLOOR PLAN SCALE 1:100



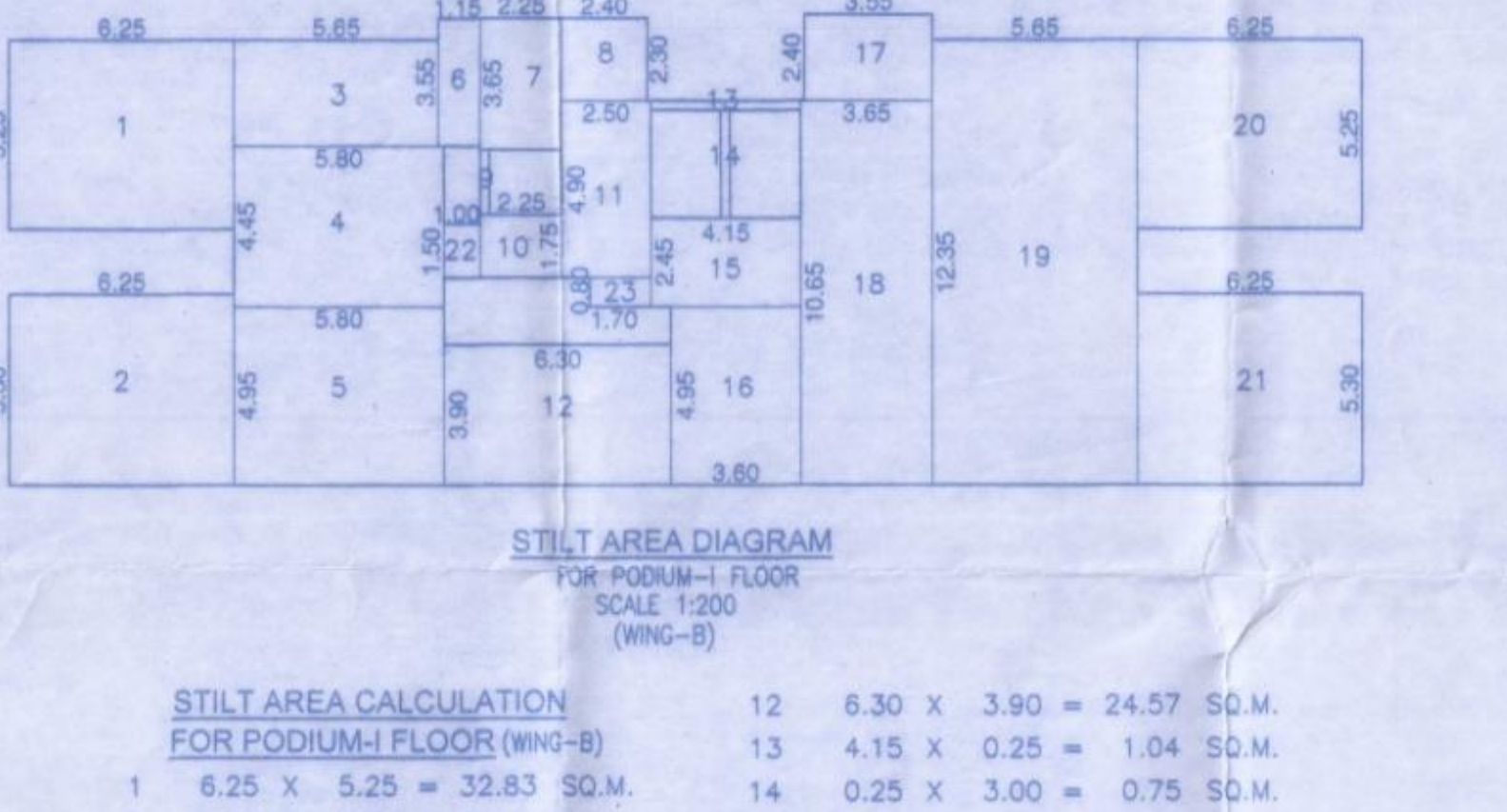
STILT AREA CALCULATION FOR PODIUM-I FLOOR (WING-A)

1	6.25 x 3.25 = 20.83 SQ.M.
2	6.25 x 5.30 = 33.13 SQ.M.
3	5.80 x 7.25 = 42.05 SQ.M.
4	5.80 x 2.15 = 12.47 SQ.M.
5	5.65 x 2.95 = 16.67 SQ.M.
6	1.15 x 3.55 = 4.08 SQ.M.
7	6.25 x 3.65 = 22.81 SQ.M.
8	2.40 x 2.30 = 5.52 SQ.M.
9	0.25 x 1.80 = 0.45 SQ.M.
10	2.25 x 1.75 = 3.94 SQ.M.
11	2.50 x 4.90 = 12.25 SQ.M.
12	6.25 x 3.90 = 24.38 SQ.M.
13	4.15 x 0.25 = 1.04 SQ.M.
14	0.25 x 3.00 = 0.75 SQ.M.
15	4.15 x 2.45 = 10.17 SQ.M.
16	3.65 x 4.65 = 16.97 SQ.M.
17	3.55 x 2.40 = 8.52 SQ.M.
18	3.65 x 10.85 = 39.67 SQ.M.
19	5.65 x 12.20 = 68.92 SQ.M.
20	6.25 x 3.10 = 19.38 SQ.M.
21	6.25 x 5.30 = 33.13 SQ.M.
22	1.35 x 1.50 = 2.03 SQ.M.
23	1.70 x 0.80 = 1.36 SQ.M.
TOTAL	= 405.66 SQ.M.



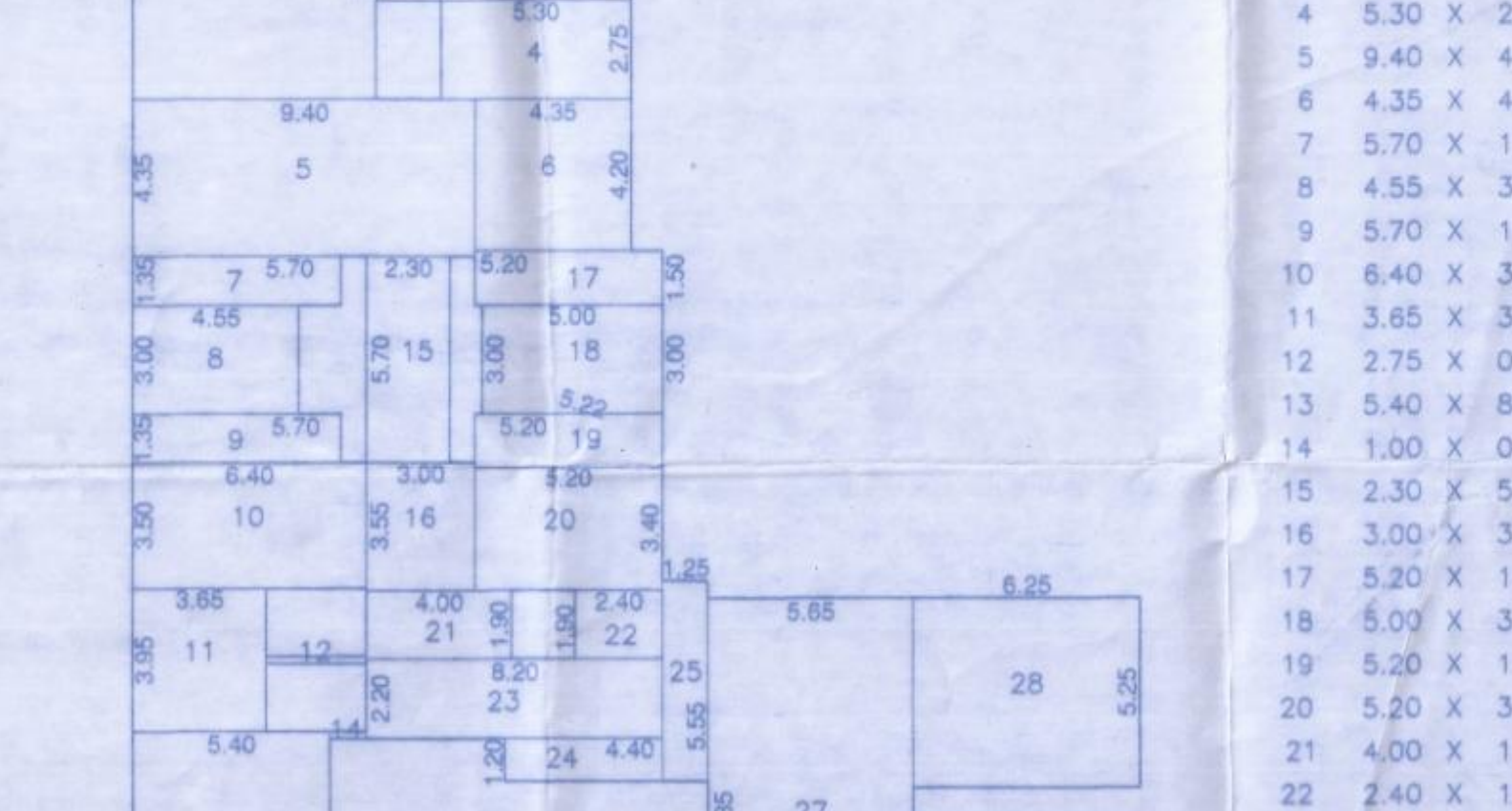
STILT AREA CALCULATION FOR PODIUM-I FLOOR (WING-B)

1	6.05 x 6.25 = 37.81 SQ.M.
2	6.05 x 4.20 = 25.41 SQ.M.
3	1.80 x 7.60 = 13.68 SQ.M.
4	5.10 x 4.20 = 21.42 SQ.M.
5	2.75 x 4.35 = 11.96 SQ.M.
6	5.20 x 1.50 = 7.80 SQ.M.
7	4.75 x 3.00 = 14.25 SQ.M.
8	5.20 x 1.50 = 7.80 SQ.M.
9	2.30 x 5.10 = 11.73 SQ.M.
10	2.40 x 3.15 = 7.56 SQ.M.
11	2.80 x 3.40 = 9.52 SQ.M.
12	3.00 x 3.55 = 10.65 SQ.M.
13	6.25 x 5.25 = 32.83 SQ.M.
14	6.25 x 5.30 = 33.13 SQ.M.
15	5.65 x 12.35 = 69.76 SQ.M.
16	3.65 x 5.40 = 19.71 SQ.M.
17	2.30 x 2.05 = 4.72 SQ.M.
18	5.65 x 5.32 = 30.06 SQ.M.
19	3.50 x 4.10 = 14.35 SQ.M.
20	6.65 x 14.80 = 98.43 SQ.M.
21	5.70 x 1.35 = 7.70 SQ.M.
22	4.40 x 3.00 = 13.20 SQ.M.
23	5.70 x 1.35 = 7.70 SQ.M.
24	6.40 x 3.50 = 22.40 SQ.M.
25	2.75 x 0.20 = 0.55 SQ.M.
26	1.00 x 0.20 = 0.20 SQ.M.
27	5.65 x 3.95 = 22.42 SQ.M.
28	5.40 x 3.20 = 17.28 SQ.M.
29	10.20 x 5.47 = 55.79 SQ.M.
30	0.50 x 1.90 = 0.95 SQ.M.
31	2.10 x 1.20 = 2.52 SQ.M.
TOTAL	= 616.44 SQ.M.



STILT AREA CALCULATION FOR PODIUM-I FLOOR (WING-C)

1	6.25 x 5.25 = 32.83 SQ.M.
2	6.25 x 5.30 = 33.13 SQ.M.
3	5.65 x 2.95 = 16.67 SQ.M.
4	5.80 x 4.45 = 25.81 SQ.M.
5	5.80 x 4.95 = 28.70 SQ.M.
6	1.15 x 3.55 = 4.08 SQ.M.
7	6.25 x 3.65 = 22.81 SQ.M.
8	2.40 x 2.30 = 5.52 SQ.M.
9	0.25 x 1.80 = 0.45 SQ.M.
10	2.25 x 1.75 = 3.94 SQ.M.
11	2.50 x 4.90 = 12.25 SQ.M.
12	6.30 x 3.90 = 24.57 SQ.M.
13	4.15 x 0.25 = 1.04 SQ.M.
14	0.25 x 3.00 = 0.75 SQ.M.
15	4.15 x 2.45 = 10.17 SQ.M.
16	3.60 x 4.95 = 17.82 SQ.M.
17	3.55 x 2.40 = 8.52 SQ.M.
18	3.65 x 10.65 = 38.87 SQ.M.
19	5.65 x 12.35 = 69.76 SQ.M.
20	6.25 x 5.25 = 32.83 SQ.M.
21	6.25 x 5.30 = 33.13 SQ.M.
22	1.35 x 1.50 = 2.03 SQ.M.
23	1.45 x 0.80 = 1.16 SQ.M.
TOTAL	= 412.72 SQ.M.



STILT AREA CALCULATION FOR PODIUM-I FLOOR (WING-D)

1	6.85 x 10.45 = 71.60 SQ.M.
2	1.80 x 1.80 = 3.24 SQ.M.
3	3.30 x 7.70 = 25.41 SQ.M.
4	5.30 x 2.75 = 14.58 SQ.M.
5	6.40 x 4.35 = 27.84 SQ.M.
6	4.35 x 4.20 = 18.27 SQ.M.
7	5.70 x 1.35 = 7.70 SQ.M.
8	4.55 x 3.00 = 13.65 SQ.M.
9	5.70 x 1.35 = 7.70 SQ.M.
10	6.40 x 3.50 = 22.40 SQ.M.
11	3.65 x 3.95 = 14.42 SQ.M.
12	2.75 x 0.20 = 0.55 SQ.M.
13	5.40 x 8.88 = 47.86 SQ.M.
14	1.00 x 0.20 = 0.20 SQ.M.
15	2.30 x 5.70 = 13.11 SQ.M.
16	3.00 x 3.55 = 10.65 SQ.M.
17	5.50 x 2.20 = 12.10 SQ.M.
18	5.00 x 3.00 = 15.00 SQ.M.
19	5.20 x 1.50 = 7.80 SQ.M.
20	5.20 x 3.40 = 17.68 SQ.M.
21	4.00 x 1.90 = 7.60 SQ.M.
22	2.40 x 1.90 = 4.56 SQ.M.
23	8.20 x 2.20 = 18.04 SQ.M.
24	4.40 x 1.20 = 5.28 SQ.M.
25	1.25 x 5.55 = 6.94 SQ.M.
26	10.45 x 5.47 = 57.21 SQ.M.
27	5.65 x 12.35 = 69.76 SQ.M.
28	6.25 x 5.25 = 32.83 SQ.M.
29	6.25 x 5.30 = 33.13 SQ.M.
TOTAL	= 607.81 SQ.M.

STILT AREA DIAGRAM FOR PODIUM-I FLOOR SCALE 1:200 (WING-A)

STAMP OF APPROVALS OF PLAN VP NO-0329 0815 & 0509

GOKHWARE SECTOR-1 BLDG.NO. 3 WING - A TO F SHEET NO-3/10

The amended plan duly approved herewith Supercedes all the earlier approved plans.

THIS PLAN SHALL NOT BE CONSIDERED AS PROOF OF OWNERSHIP FOR ANY SERVICES IN ANY COURT OF LAW.

Approved as amended in Subject to the Conditions mentioned in the Official Letter No. VVC/CT/AMEND/2022/162 dated 31/03/2022.

COMMISSIONER NASHIKUR CITY MUNICIPAL CORPORATION

Deputy Director VVC/MC, Virar.

STILT AREA CALCULATION FOR PODIUM-I FLOOR (WING-E)

1	6.05 x 6.25 = 37.81 SQ.M.
2	6.05 x 4.20 = 25.41 SQ.M.
3	1.80 x 7.60 = 13.68 SQ.M.
4	5.10 x 4.20 = 21.42 SQ.M.
5	2.75 x 4.35 = 11.96 SQ.M.
6	5.20 x 1.50 = 7.80 SQ.M.
7	4.75 x 3.00 = 14.25 SQ.M.
8	5.20 x 1.50 = 7.80 SQ.M.
9	2.30 x 5.10 = 11.73 SQ.M.
10	2.40 x 3.15 = 7.56 SQ.M.
11	2.80 x 3.40 = 9.52 SQ.M.
12	3.00 x 3.55 = 10.65 SQ.M.
13	6.25 x 5.25 = 32.83 SQ.M.
14	6.25 x 5.30 = 33.13 SQ.M.
15	5.65 x 12.35 = 69.76 SQ.M.
16	3.65 x 5.40 = 19.71 SQ.M.
17	2.30 x 2.05 = 4.72 SQ.M.
18	5.65 x 5.32 = 30.06 SQ.M.
19	3.50 x 4.10 = 14.35 SQ.M.
20	6.65 x 14.80 = 98.43 SQ.M.
21	5.70 x 1.35 = 7.70 SQ.M.
22	4.40 x 3.00 = 13.20 SQ.M.
23	5.70 x 1.35 = 7.70 SQ.M.
24	6.40 x 3.50 = 22.40 SQ.M.
25	2.75 x 0.20 = 0.55 SQ.M.
26	1.00 x 0.20 = 0.20 SQ.M.
27	5.65 x 3.95 = 22.42 SQ.M.
28	5.40 x 3.20 = 17.28 SQ.M.
29	10.20 x 5.47 = 55.79 SQ.M.
30	0.50 x 1.90 = 0.95 SQ.M.
31	2.10 x 1.20 = 2.52 SQ.M.
TOTAL	= 616.44 SQ.M.

STILT AREA CALCULATION FOR PODIUM-I FLOOR (WING-F)

1	6.25 x 5.30 = 33.13 SQ.M.
2	3.20 x 5.25 = 16.80 SQ.M.
3	3.05 x 5.25 = 16.01 SQ.M.
4	8.55 x 3.97 = 33.96 SQ.M.
5	5.80 x 1.50 = 8.70 SQ.M.
6	5.65 x 6.85 = 38.67 SQ.M.
7	7.10 x 5.47 = 38.85 SQ.M.
8	5.65 x 5.20 = 29.39 SQ.M.
9	3.65 x 2.15 = 7.85 SQ.M.
10	5.85 x 8.67 = 50.72 SQ.M.
11	0.55 x 0.20 = 0.11 SQ.M.
12	3.95 x 3.95 = 15.60 SQ.M.
13	2.45 x 0.20 = 0.49 SQ.M.
14	3.80 x 2.20 = 8.36 SQ.M.
15	4.00 x 1.95 = 7.80 SQ.M.
16	10.40 x 5.00 = 52.00 SQ.M.
17	1.80 x 5.05 = 9.09 SQ.M.
18	2.40 x 3.30 = 7.92 SQ.M.
19	1.55 x 1.50 = 2.33 SQ.M.
20	6.65 x 9.95 = 66.17 SQ.M.
21	1.80 x 1.60 = 2.88 SQ.M.
22	5.25 x 9.95 = 52.64 SQ.M.
23	3.05 x 1.80 = 5.49 SQ.M.
TOTAL	= 905.17 SQ.M.

STILT AREA CALCULATION FOR PODIUM-I FLOOR (WING-G)

1	6.25 x 5.30 = 33.13 SQ.M.
2	6.25 x 5.10 = 31.88 SQ.M.
3	5.65 x 12.20 = 68.92 SQ.M.
4	5.65 x 5.32 = 30.06 SQ.M.
5	1.25 x 5.40 = 6.75 SQ.M.
6	4.85 x 5.47 = 26.50 SQ.M.
7	1.75 x 8.67 = 15.17 SQ.M.
8	3.65 x 12.63 = 46.10 SQ.M.
9	4.40 x 3.25 = 14.30 SQ.M.
10	1.00 x 0.20 = 0.20 SQ.M.
11	2.40 x 1.90 = 4.56 SQ.M.
12	2.40 x 3.55 = 8.52 SQ.M.
13	4.00 x 5.65 = 22.60 SQ.M.
14	2.75 x 0.20 = 0.55 SQ.M.
15	6.40 x 3.50 = 22.40 SQ.M.
16	5.70 x 1.35 = 7.70 SQ.M.
17	1.80 x 3.55 = 6.39 SQ.M.
18	5.65 x 1.35 = 7.63 SQ.M.
19	4.75 x 3.00 = 14.25 SQ.M.
20	3.90 x 1.50 = 5.85 SQ.M.
21	3.80 x 4.25 = 16.15 SQ.M.
22	1.30 x 5.75 = 7.48 SQ.M.
23	0.95 x 4.40 = 4.17 SQ.M.
24	9.45 x 4.35 = 41.12 SQ.M.
25	6.50 x 3.00 = 19.50 SQ.M.
26	5.70 x 1.35 = 7.70 SQ.M.
27	6.05 x 7.35 = 44.45 SQ.M.
28	1.80 x 1.80 = 3.24 SQ.M.
29	8.65 x 7.40 = 63.91 SQ.M.
30	2.30 x 5.70 = 13.11 SQ.M.
31	0.30 x 2.05 = 0.62 SQ.M.
32	3.50 x 2.20 = 7.70 SQ.M.
TOTAL	= 975.81 SQ.M.

DESCRIPTION OF PROPOSAL & PROPERTY

PROPOSED GROUP HOUSING SCHEME AT VILLAGE, GOKHWARE, TALUKA VASAI, DIST. PALGHAR

NAME OF APPLICANT: SHRI. DEVENDRA R. LADHANI (P.A.HOLDER)

SIGNATURE OF APPLICANT: [Signature]

JOB NO. J/175A/2012

DATE 26/06/2022

SCALE AS SHOWN

DRAWN BY SWAPNALI DEO

CHECKED: [Signature]

ENGINEER: sanal mehta & associates

REGISTERED OFFICE: RAMESHWAR TOWER A-100, SHIMOLI ROAD, NEXT TO GOKHARE SCHOOL, VASAI WEST, DIST. PALGHAR.

PHONE NO. 2200000000

REGISTERED ENGINEER: SANAL MEHTA