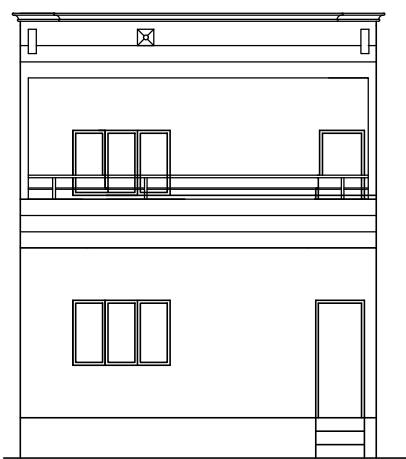


AREA OF BLOCK 'A'	= 14'-6" X 16'-0"	= 232.00 SQ.FT.
AREA OF BLOCK 'B'	= 24'-6" X 24'-3"	= 594.12 SQ.FT.
BUILT UP AREA OF GROUND FLOOR		= 826.12 SQ.FT.
BUILT UP AREA OF FIRST FLOOR		= 826.12 SQ.FT.
TOTAL BUILT UP AREA		= 1,652.24 SQ.FT.

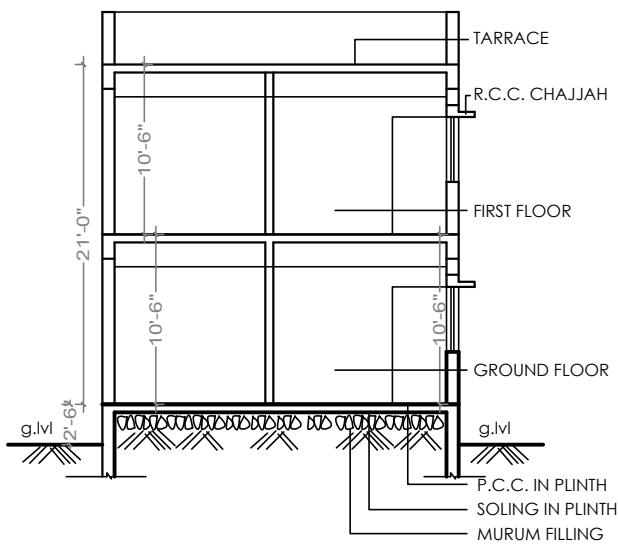
BLOCK PLAN
TYPICAL FLOOR PLAN
SCALE 1:200

SITE PLAN

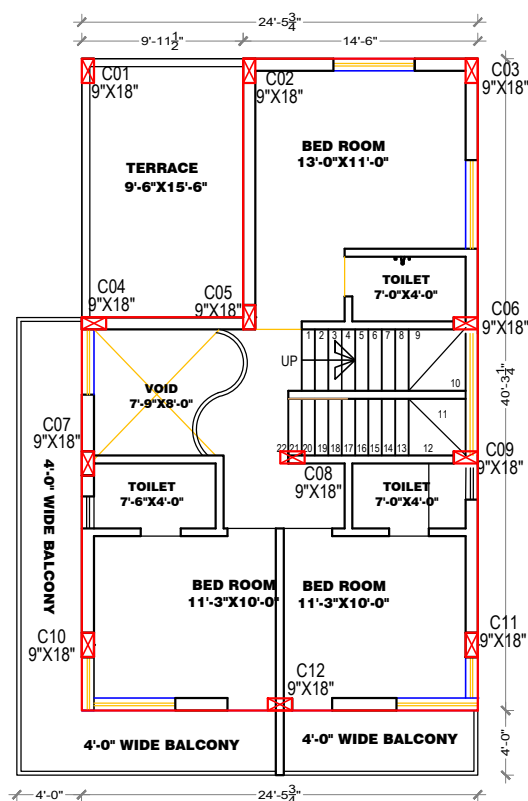
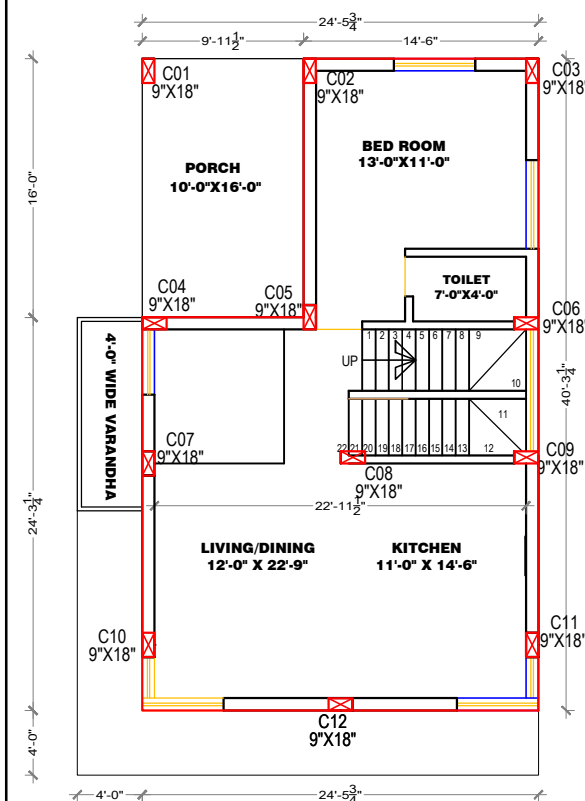
SCALE 1:200



ELEVATION



SECTION AT A-A



SEAL OF APPROVAL

SCHEDULE OF DOORS & WINDOWS

D	_0.75 X 2.13	FLUSH DOOR
D1	_0.90 X 2.13	FLUSH DOOR
V	_0.60 X 0.90	ALLUMINIUM GLAZED LOUVERS
W2	_1.83 X 1.22	ALLUMINIUM GLAZED WINDOW
W3	_1.22 X 1.22	ALLUMINIUM GLAZED WINDOW

AREA STATEMENT

1.) AREA OF PLOT	2500.00 SQ.FT.
2.) PROPOSED BUILT UP AREA	1,652.24 SQ.FT.

NOTES

- 1) PLOT BOUNDARY IS SHOWN THUS
- 2) PROPOSED WORK IS SHOWN THUS
- 3) WASTE WATER LINES IS SHOWN THUS
- 4) SEWER LINES IS SHOWN THUS

PLAN FOR
PROPOSED CLUB HOUSE ON GUT. No. 97,
PLOT No.15 ,AT VILLAGE, BORAJ,
TALUKA:- MAVAL, DIST.:-PUNE.

MR. SATISH K. JAIN

PLANNERS
&
DESIGNERS

JOB No.	DRG. No.	DATE	DRAWN BY	CHKD. BY
	1			