

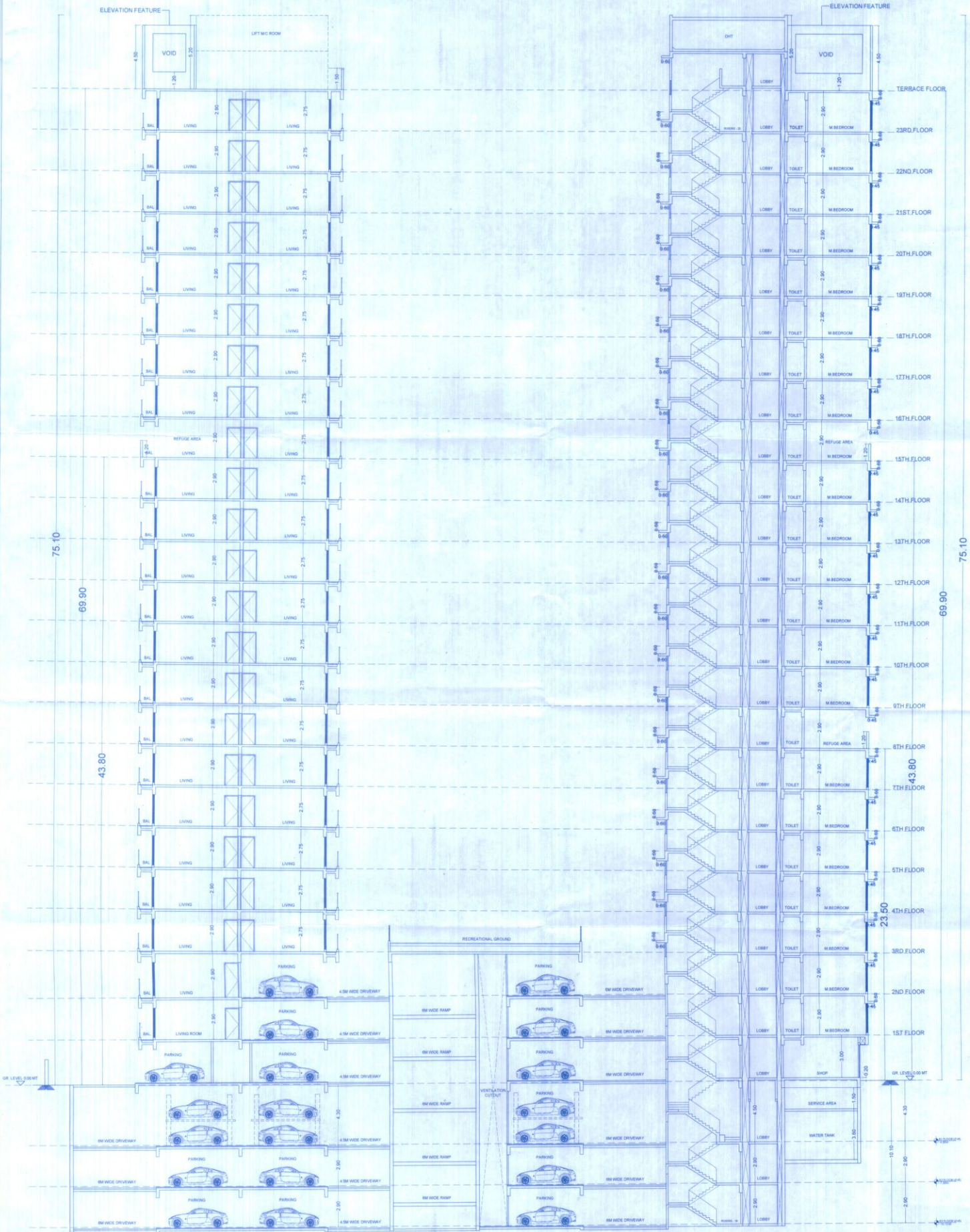
BUILT UP AREA CALCULATION		
15TH FLOOR (WING B)		
1	3.80 X 4.00 X 1.00	= 15.20 SQM
2	3.80 X 3.75 X 1.00	= 14.25 SQM
3	4.00 X 4.00 X 1.00	= 16.00 SQM
4	3.20 X 5.50 X 1.00	= 17.60 SQM
5	2.75 X 1.75 X 1.00	= 4.81 SQM
6	2.25 X 3.50 X 1.00	= 7.88 SQM
7	2.25 X 2.25 X 1.00	= 5.06 SQM
8	2.50 X 3.25 X 1.00	= 8.13 SQM
9	2.25 X 2.50 X 1.00	= 5.63 SQM
10	3.00 X 4.00 X 1.00	= 12.00 SQM
11	1.50 X 2.50 X 1.00	= 3.75 SQM
12	1.50 X 2.25 X 1.00	= 3.38 SQM
13	1.50 X 3.40 X 1.00	= 5.10 SQM
14	4.40 X 2.20 X 1.00	= 9.68 SQM
15	1.80 X 2.20 X 1.00	= 3.96 SQM
16	3.30 X 3.75 X 1.00	= 12.38 SQM
17	2.40 X 1.80 X 1.00	= 4.32 SQM
18	3.50 X 4.00 X 1.00	= 14.00 SQM
TOTAL ADDITION		= 154.42 SQM
REFUGE AREA CALCULATION		
15TH FLOOR (WING B)		
R1	8.70 X 4.00 X 1.00	= 34.80 SQM
R2	7.75 X 6.50 X 1.00	= 50.38 SQM
R3	4.40 X 5.10 X 1.00	= 22.44 SQM
R4	1.25 X 5.50 X 1.00	= 6.88 SQM
R5	8.20 X 4.50 X 1.00	= 36.90 SQM
R6	5.80 X 1.80 X 1.00	= 10.44 SQM
R7	1.80 X 2.50 X 1.00	= 4.50 SQM
R8	3.10 X 4.50 X 1.00	= 13.95 SQM
TOTAL REFUGE AREA		= 159.89 SQM
STAIRCASE AREA CALCULATION		
15TH FLOOR (WING B)		
ST1	3.25 X 2.15 X 1.00	= 7.00 SQM
ST2	3.15 X 3.50 X 1.00	= 11.03 SQM
ST3	2.80 X 6.50 X 1.00	= 18.20 SQM
ST4	3.20 X 4.40 X 1.00	= 14.08 SQM
TOTAL STAIRCASE AREA PER FL.		= 50.31 SQM
BUILT UP AREA		
TOTAL BUILT UP AREA		= 154.42 SQM

BUILT UP AREA CALCULATION		
15TH FLOOR (WING C)		
1	3.80 X 2.80 X 1.00	= 10.64 SQM
2	6.00 X 2.50 X 1.00	= 15.00 SQM
3	6.00 X 3.20 X 1.00	= 19.20 SQM
4	5.00 X 2.20 X 1.00	= 11.00 SQM
5	5.00 X 1.75 X 1.00	= 8.75 SQM
6	1.50 X 4.40 X 1.00	= 6.60 SQM
7	3.00 X 4.20 X 1.00	= 12.60 SQM
8	6.00 X 3.40 X 1.00	= 20.40 SQM
9	3.50 X 7.50 X 1.00	= 26.25 SQM
10	6.00 X 2.50 X 1.00	= 15.00 SQM
11	6.00 X 8.00 X 1.00	= 48.00 SQM
12	1.20 X 5.70 X 1.00	= 6.84 SQM
13	5.10 X 1.50 X 1.00	= 7.65 SQM
TOTAL ADDITION		= 216.89 SQM
REFUGE AREA CALCULATION		
15TH FLOOR (WING C)		
R1	5.30 X 1.70 X 1.00	= 9.01 SQM
R2	4.40 X 2.50 X 1.00	= 11.00 SQM
R3	5.30 X 2.50 X 1.00	= 13.25 SQM
R4	6.00 X 2.80 X 1.00	= 16.80 SQM
R5	6.20 X 3.20 X 1.00	= 19.84 SQM
R6	6.00 X 2.50 X 1.00	= 15.00 SQM
R7	6.75 X 1.75 X 1.00	= 11.81 SQM
R8	1.80 X 4.50 X 1.00	= 8.10 SQM
R9	6.50 X 4.50 X 1.00	= 29.25 SQM
R10	5.80 X 3.50 X 1.00	= 20.30 SQM
R11	2.75 X 1.80 X 1.00	= 4.95 SQM
R12	4.10 X 3.75 X 1.00	= 15.38 SQM
R13	4.10 X 3.75 X 1.00	= 15.38 SQM
TOTAL REFUGE AREA		= 159.89 SQM
STAIRCASE AREA CALCULATION		
15TH FLOOR (WING C)		
ST1	4.80 X 2.50 X 1.00	= 12.00 SQM
ST2	7.40 X 1.50 X 1.00	= 11.10 SQM
ST3	2.40 X 3.80 X 1.00	= 9.12 SQM
ST4	3.40 X 5.20 X 1.00	= 17.68 SQM
TOTAL STAIRCASE AREA PER FL.		= 48.90 SQM
BUILT UP AREA		
TOTAL BUILT UP AREA		= 216.89 SQM

BUILT UP AREA CALCULATION		
15TH FLOOR (WING D)		
1	4.50 X 3.50 X 1.00	= 15.75 SQM
2	1.10 X 5.80 X 1.00	= 6.38 SQM
3	5.10 X 4.80 X 1.00	= 24.48 SQM
4	1.40 X 3.80 X 1.00	= 5.32 SQM
5	6.20 X 3.80 X 1.00	= 23.56 SQM
6	5.30 X 1.40 X 1.00	= 7.42 SQM
7	2.80 X 2.20 X 1.00	= 6.16 SQM
8	4.50 X 6.00 X 1.00	= 27.00 SQM
9	3.70 X 1.40 X 1.00	= 5.18 SQM
10	1.20 X 1.50 X 1.00	= 1.80 SQM
11	3.80 X 1.20 X 1.00	= 4.56 SQM
12	5.80 X 2.30 X 1.00	= 13.34 SQM
TOTAL ADDITION		= 138.79 SQM
REFUGE AREA CALCULATION		
15TH FLOOR (WING D)		
R1	7.80 X 2.50 X 1.00	= 19.50 SQM
R2	6.50 X 1.40 X 1.00	= 9.10 SQM
R3	6.80 X 1.80 X 1.00	= 12.24 SQM
TOTAL REFUGE AREA		= 70.89 SQM
STAIRCASE AREA CALCULATION		
15TH FLOOR (WING D)		
ST1	6.80 X 3.80 X 1.00	= 25.84 SQM
ST2	4.40 X 2.20 X 1.00	= 9.68 SQM
ST3	3.20 X 3.40 X 1.00	= 10.92 SQM
ST4	2.20 X 1.20 X 1.00	= 2.64 SQM
ST5	3.50 X 3.40 X 1.00	= 11.90 SQM
ST6	2.80 X 4.75 X 1.00	= 13.30 SQM
TOTAL STAIRCASE AREA PER FL.		= 64.81 SQM
BUILT UP AREA		
TOTAL BUILT UP AREA		= 138.79 SQM

BUILT UP AREA CALCULATION		
15TH FLOOR (WING E)		
1	6.50 X 1.80 X 3.00	= 35.10 SQM
2	5.20 X 4.10 X 1.00	= 21.32 SQM
3	2.85 X 4.10 X 1.00	= 11.67 SQM
4	2.85 X 3.20 X 2.00	= 18.48 SQM
5	2.80 X 3.20 X 1.00	= 9.12 SQM
6	2.20 X 3.20 X 1.00	= 7.04 SQM
7	5.15 X 3.20 X 1.00	= 16.48 SQM
8	1.20 X 3.20 X 1.00	= 3.84 SQM
9	1.40 X 4.10 X 1.00	= 5.74 SQM
TOTAL ADDITION		= 208.13 SQM
REFUGE AREA CALCULATION		
15TH FLOOR (WING E)		
R1	7.80 X 2.50 X 1.00	= 19.50 SQM
R2	6.50 X 1.40 X 1.00	= 9.10 SQM
R3	6.80 X 1.80 X 1.00	= 12.24 SQM
TOTAL REFUGE AREA		= 70.89 SQM
STAIRCASE AREA CALCULATION		
15TH FLOOR (WING E)		
ST1	6.80 X 3.80 X 1.00	= 25.84 SQM
ST2	4.40 X 2.20 X 1.00	= 9.68 SQM
ST3	3.20 X 3.40 X 1.00	= 10.92 SQM
ST4	2.20 X 1.20 X 1.00	= 2.64 SQM
ST5	3.50 X 3.40 X 1.00	= 11.90 SQM
ST6	2.80 X 4.75 X 1.00	= 13.30 SQM
TOTAL STAIRCASE AREA PER FL.		= 64.81 SQM
BUILT UP AREA		
TOTAL BUILT UP AREA		= 208.13 SQM

BUILT UP AREA CALCULATION		
15TH FLOOR (WING F)		
1	5.80 X 3.50 X 1.00	= 20.30 SQM
2	5.80 X 2.80 X 1.00	= 16.24 SQM
3	5.80 X 2.20 X 1.00	= 12.76 SQM
4	5.80 X 1.75 X 1.00	= 10.15 SQM
5	5.80 X 1.20 X 1.00	= 6.96 SQM
6	5.80 X 0.75 X 1.00	= 4.35 SQM
7	5.80 X 0.25 X 1.00	= 1.45 SQM
8	5.80 X 0.25 X 1.00	= 1.45 SQM
9	5.80 X 0.25 X 1.00	= 1.45 SQM
10	5.80 X 0.25 X 1.00	= 1.45 SQM
11	5.80 X 0.25 X 1.00	= 1.45 SQM
12	5.80 X 0.25 X 1.00	= 1.45 SQM
13	5.80 X 0.25 X 1.00	= 1.45 SQM
14	5.80 X 0.25 X 1.00	= 1.45 SQM
15	5.80 X 0.25 X 1.00	= 1.45 SQM
16	5.80 X 0.25 X 1.00	= 1.45 SQM
17	5.80 X 0.25 X 1.00	= 1.45 SQM
18	5.80 X 0.25 X 1.00	= 1.45 SQM
19	5.80 X 0.25 X 1.00	= 1.45 SQM
20	5.80 X 0.25 X 1.00	= 1.45 SQM
21	5.80 X 0.25 X 1.00	= 1.45 SQM
22	5.80 X 0.25 X 1.00	= 1.45 SQM
23	5.80 X 0.25 X 1.00	= 1.45 SQM
24	5.80 X 0.25 X 1.00	= 1.45 SQM
25	5.80 X 0.25 X 1.00	= 1.45 SQM
26	5.80 X 0.25 X 1.00	= 1.45 SQM
27	5.80 X 0.25 X 1.00	= 1.45 SQM
28	5.80 X 0.25 X 1.00	= 1.45 SQM
29	5.80 X 0.25 X 1.00	= 1.45 SQM
30	5.80 X 0.25 X 1.00	= 1.45 SQM
31	5.80 X 0.25 X 1.00	= 1.45 SQM
32	5.80 X 0.25 X 1.00	= 1.45 SQM
33	5.80 X 0.25 X 1.00	= 1.45 SQM
34	5.80 X 0.25 X 1.00	= 1.45 SQM
35	5.80 X 0.25 X 1.00	= 1.45 SQM
36	5.80 X 0.25 X 1.00	= 1.45 SQM
37	5.80 X 0.25 X 1.00	= 1.45 SQM
38	5.80 X 0.25 X 1.00	= 1.45 SQM
39	5.80 X 0.25 X 1.00	= 1.45 SQM
40	5.80 X 0.25 X 1.00	= 1.45 SQM
41	5.80 X 0.25 X 1.00	= 1.45 SQM
42	5.80 X 0.25 X 1.00	= 1.45 SQM
43	5.80 X 0.25 X 1.00	= 1.45 SQM
44	5.80 X 0.25 X 1.00	= 1.45 SQM
45	5.80 X 0.25 X 1.00	= 1.45 SQM
46	5.80 X 0.25 X 1.00	= 1.45 SQM
47	5.80 X 0.25 X 1.00	= 1.45 SQM
48	5.80 X 0.25 X 1.00	= 1.45 SQM
49	5.80 X 0.25 X 1.00	= 1.45 SQM
50	5.80 X 0.25 X 1.00	= 1.45 SQM
51	5.80 X 0.25 X 1.00	= 1.45 SQM
52	5.80 X 0.25 X 1.00	= 1.45 SQM
53	5.80 X 0.25 X 1.00	= 1.45 SQM
54	5.80 X 0.25 X 1.00	= 1.45 SQM
55	5.80 X 0.25 X 1.00	= 1.45 SQM
56	5.80 X 0.25 X 1.00	= 1.45 SQM
57	5.80 X 0.25 X 1.00	= 1.45 SQM
58	5.80 X 0.25 X 1.00	= 1.45 SQM
59	5.80 X 0.25 X 1.00	= 1.45 SQM
60	5.80 X 0.25 X 1.00	= 1.45 SQM
61	5.80 X 0.25 X 1.00	= 1.45 SQM
62	5.80 X 0.25 X 1.00	= 1.45 SQM
63	5.80 X 0.25 X 1.00	= 1.45 SQM
64	5.80 X 0.25 X 1.00	= 1.45 SQM
65	5.80 X 0.25 X 1.00	= 1.45 SQM
66	5.80 X 0.25 X 1.00	= 1.45 SQM
67	5.80 X 0.25 X 1.00	= 1.45 SQM
68	5.80 X 0.25 X 1.00	= 1.45 SQM
69	5.80 X 0.25 X 1.00	= 1.45 SQM
70	5.80 X 0.25 X 1.00	= 1.45 SQM
71	5.80 X 0.25 X 1.00	= 1.45 SQM
72	5.80 X 0.25 X 1.00	= 1.45 SQM
73	5.80 X 0.25 X 1.00	= 1.45 SQM
74	5.80 X 0.25 X 1.00	= 1.45 SQM
75	5.80 X 0.25 X 1.00	= 1.45 SQM
76	5.80 X 0.25 X 1.00	= 1.45 SQM
77	5.80 X 0.25 X 1.00	= 1.45 SQM
78	5.80 X 0.25 X 1.00	= 1.45 SQM
79	5.80 X 0.25 X 1.00	= 1.45 SQM
80	5.80 X 0.25 X 1.00	= 1.45 SQM
81	5.80 X 0.25 X 1.00	= 1.45 SQM
82	5.80 X 0.25 X 1.00	= 1.45 SQM
83	5.80 X 0.25 X 1.00	= 1.45 SQM
84	5.80 X 0.25 X 1.00	= 1.45 SQM
85	5.80 X 0.25 X 1.00	= 1.45 SQM
86	5.80 X 0.25 X 1.00	= 1.45 SQM
87	5.80 X 0.25 X 1.00	= 1.45 SQM
88	5.80 X 0.25 X 1.00	= 1.45 SQM
89	5.80 X 0.25 X 1.00	= 1.45 SQM
90	5.80 X 0.25 X 1.00	= 1.45 SQM
91	5.80 X 0.25 X 1.00	= 1.45 SQM
92	5.80 X 0.25 X 1.00	= 1.45 SQM
93	5.80 X 0.25 X 1.00	= 1.45 SQM
94	5.80 X 0.25 X 1.00	= 1.45 SQM
95	5.80 X 0.25 X 1.00	= 1.45 SQM
96	5.80 X 0.25 X 1.00	= 1.45 SQM
97	5.80 X 0.25 X 1.00	= 1.45 SQM
98	5.80 X 0.25 X 1.00	= 1.45 SQM
99	5.80 X 0.25 X 1.00	= 1.45 SQM
100	5.80 X 0.25 X 1.00	= 1.45 SQM
101	5.80 X 0.25 X 1.00	= 1.45 SQM
102	5.80 X 0.25 X 1.00	= 1.45 SQM
103	5.80 X 0.25 X 1.00	= 1.45 SQM
104	5.80 X 0.25 X 1.00	= 1.45 SQM
105	5.80 X 0.25 X 1.00	= 1.45 SQM
106	5.80 X 0.25 X 1.00	= 1.45 SQM
107	5.80 X 0.25 X 1.00	= 1.45 SQM
108	5.80 X 0.25 X 1.00	= 1.45 SQM
109	5.80 X 0.25 X 1.00	= 1.45 SQM
110	5.80 X 0.25 X 1.00	= 1.45 SQM
111	5.80 X 0.25 X 1.00	= 1.45 SQM
112	5.80 X 0.25 X 1.00	= 1.45 SQM
113	5.80 X 0.25 X 1.00	= 1.45 SQM
114	5.80 X 0.25 X 1.00	= 1.45 SQM
115	5.80 X 0.25 X 1.00	= 1.45 SQM
116	5.80 X 0.25 X 1.00	= 1.45 SQM
117	5.80 X 0.25 X 1.00	= 1.45 SQM
118	5.80 X 0.25 X 1.00	= 1.45 SQM
119	5.80 X 0.25 X 1.00	= 1.45 SQM
120	5.80 X 0.25 X 1.00	= 1.45 SQM
121	5.80 X 0.25 X 1.00	= 1.45 SQM
122	5.80 X 0.25 X 1.00	= 1.45 SQM
123	5.80 X 0.25 X 1.00	= 1.45 SQM
124	5.80 X 0.25 X 1.00	= 1.45 SQM
125	5.80 X 0.25 X 1.00	= 1.45 SQM
126	5.80 X 0.25 X 1.00	= 1.45 SQM
127	5.80 X 0.25 X 1.00	= 1.45 SQM
128	5.80 X 0.25 X 1.00	= 1.45 SQM
129	5.80 X 0.25 X 1.00	= 1.45 SQM
130	5.80 X 0.25 X 1.00	= 1.45 SQM
131	5.80 X 0.25 X 1.00	= 1.45 SQM
132	5.80 X 0.25 X 1.00	= 1.45 SQM
133	5.80 X 0.25 X 1.00	= 1.45 SQM
134	5.80 X 0.25 X 1.00	= 1.45 SQM
135	5.80 X 0.25 X 1.00	= 1.45 SQM
136	5.80 X 0.25 X 1.00	= 1.45 SQM
137	5.80 X 0.25 X 1.00	= 1.45 SQM
138	5.80 X 0.25 X 1.00	= 1.45 SQM
139	5.80 X 0.25 X 1.00	= 1.45 SQM
140	5.80 X 0.25 X 1.00	= 1.45 SQM
141	5.80 X 0.25 X 1.00	= 1.45 SQM
142	5.80 X 0.25 X 1.00	= 1.45 SQM
143	5.80 X 0.25 X 1.00	= 1.



SECTION B - B
SCALE - 1 : 100

FORM II (PROFORMA B)
CONTENTS OF SHEETS
SECTION B-B
PLAN FOR APPROVAL

Issued by B.P. Cell / Greater Mumbai / MHADA
Read Along with this office letter
No. Phada - 23/132/2023
Date: 19 Dec 2023
Ex. Eng. *[Signature]*
Cell Chhabada (E.S.)

- NOTE:
1. ALL DIMENSIONS ARE IN METRES.
 2. SCALE USE
 3. FLOOR PLAN 1:100
 4. BLOCK PLAN 1:500
 5. LOCATION PLAN 1:500
 6. LOCAL PLAN AREA
 7. THE PLANS ARE PROPOSED AS PER PROVISION OF DCPR 2014 AND AS PER THE PROVISIONS AND REGULATIONS ISSUED BY MCGM AND WHICHER TIME TO TIME.
 8. GUIDELINES ISSUED IN EOOD FOLLOWED.
 9. THE ARITHMETIC CALCULATIONS CHECKED BY ME AND ARE FOUND CORRECT.

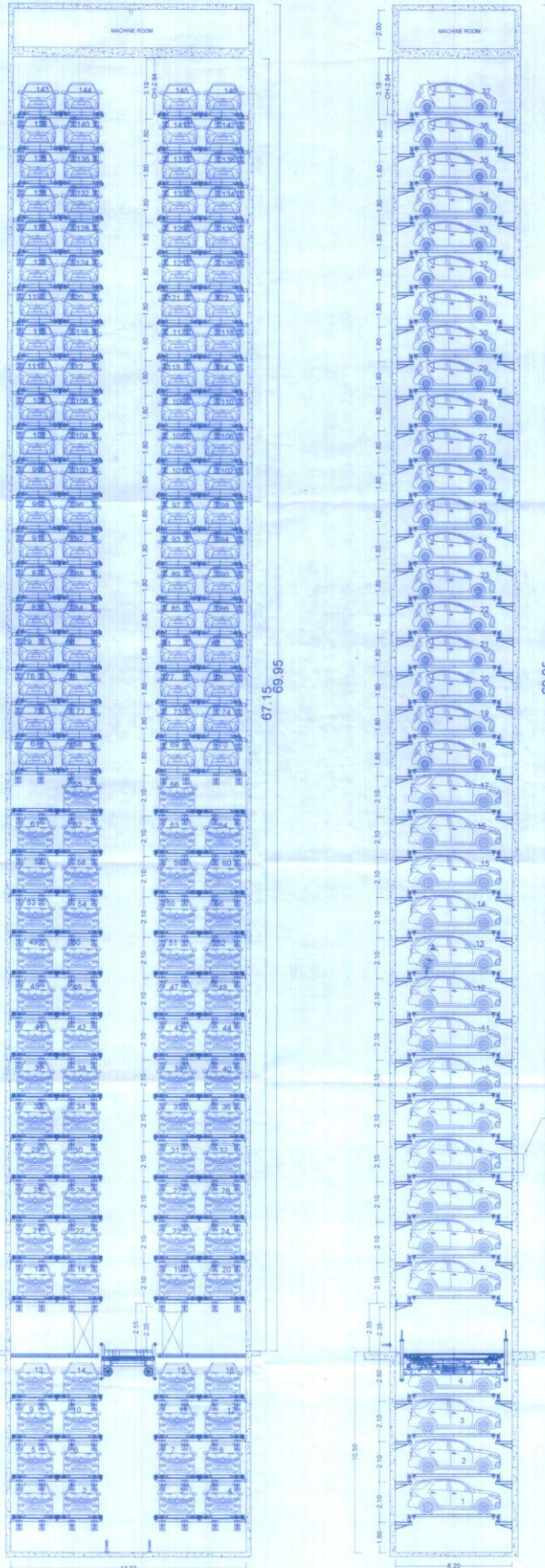
DESCRIPTION OF PROPOSAL AND PROPERTY
PROPOSED RE-DEVELOPMENT OF BLDG. NO. 1,2,3 & 4A ON PLOT BEARING CTS. NO. 45A(A/P1), OF VILLAGE KURLA - II, SON TRAMBAK ROAD, SOCI CHUNABHATTI (EAST), MUMBAI 400022.

SIGN & NAME OF OWNER:

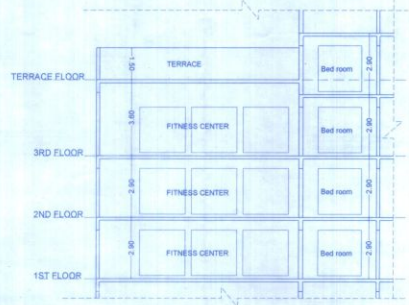
M/S. SHETH SMARTHOMES LLP C.A TO OM TRAMURTI CO-OP HOUSING SOCIETY LTD

SCALE	CHK BY	DRN BY	REV	DESCRIPTION	DATE	SIGN
AS SHOWN						
SIGNATURE		NAME AND ADDRESS OF ARCHITECT				
<i>[Signature]</i>		K. R. LOTLIKAR & ASSO. ARCHITECT & ENGINEERS 299, VEENA INDUSTRIAL ESTATE, L.B.S. ROAD, VIKHROLI (W), MUMBAI - 40 200006				

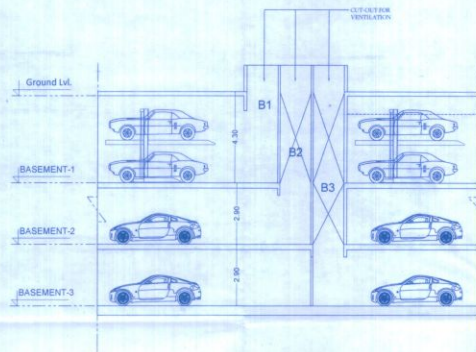
Issued by B.P. Cell / Greater Mumbai / Mhada
 Read Along with this office letter
 No. Mhada - 23/133/2023
 Date - 15-05-2023
 Ex. Eng. B.P. Cell GM/Mhada (E.S.)



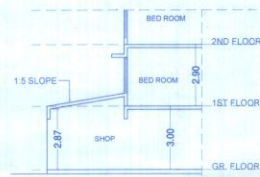
PARKING TOWER SECTION
 SCALE :- 1 : 100



SECTION C - C
 SCALE :- 1 : 100



TYP. SECTION THROUGH VENTILATION
 SCALE :- 1 : 100



SECTION D - D
 SCALE :- 1 : 100

FORM II (PROFORMA B)	
CONTENTS OF SHEETS	
SECTION D-D, C-C	
PLAN FOR APPROVAL	
NOTE	
1. ALL DIMENSIONS ARE IN METRES	
2. SCALE USE	
A) FOR PLAN 1:50	
B) FOR PLAN 1:100	
C) FOR SECTION 1:10	
3. THE PLANS ARE PROPOSED AS PER PROVISION OF DCR 2014 AND AS PER THE PRESENT REGULATION AND CHANGES ISSUED BY MCGM AND MHADA TIME TO TIME	
4. ISO/IEC 9001:2015 CERTIFIED	
5. THE ARCHITECTURAL CALCULATIONS CHECKED BY ME AND ARE FOUND CORRECT	
DESCRIPTION OF PROPOSAL AND PROPERTY	
PROPOSED RE-DEVELOPMENT OF BLDG. NO. 1, 2, 3 & 4A ON PLOT BEARING CTS. NO. 458(A/P), OF VILLAGE KURLA - III, SION TROMBAY ROAD, SION CHUNABHATTI (EAST), MUMBAI 400022.	
SIGN & NAME OF OWNER	
M/S. SHETH SMARTHOMES LLP C.A TO: OM TRIMURTI CO-OP HOUSING SOCIETY LTD.	
SCALE AS SHOWN	CHK. BY ATUL
DRN. BY	REV
DESCRIPTION	DATE
SIGNATURE	NAME AND ADDRESS OF ARCHITECT
K. R. LOTLIKAR & ASSO. ARCHITECT & ENGINEERS 209, VEENA INDUSTRIAL ESTATE, L.B.S. ROAD, VIKHROLI (W), MUMBAI - 40 PROJECT NO. 23/133/2023	