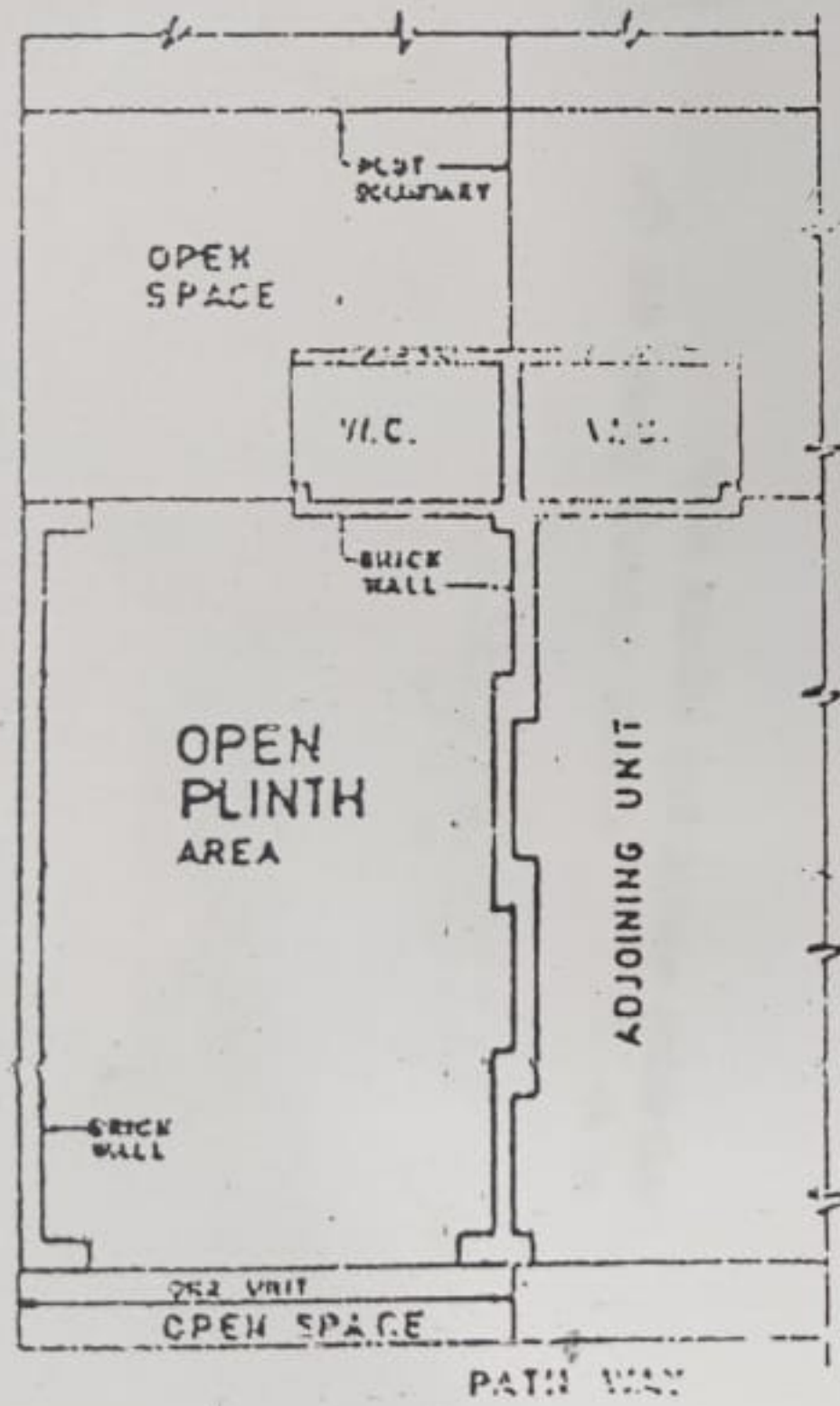


CIDCO KOPERKHAIRANE HOUSING ESTATE.

SS-II TYPE APARTMENT
IN SECTOR 4 AT KOPER-
KHAIRANE NEW BOMBAY.

ANNEXTURE 'A' TO THE AGREEMENT FOR SALE OF APARTMENT.
ANNEXTURE 'B' TO THE DEED OF APARTMENT.

SS-I/1018 K.K.



PLAN

CITY SERVICES
OPEN PLINTH AREA WITH SIDE WALLS
16.343 m² SQ. MTS./UNIT

I, *[Signature]*, Architect, do hereby certify that this is an accurate copy of plan of SS-II type apartment as shown above and approved by the local authority namely City & Industrial Development Corporation of Maharashtra Limited within whose jurisdiction the building is located and that the said plans fully and accurately depict the true diagram apartment numbers and dimensions of apartment as built.

I solemnly affirm that what is stated above is true to the best of my knowledge, information and belief.

Solemnly affirmed at CBD Belapur.

This 27th day of July, 1990.

[Signature]

(MR. A.R. SHINKHE)
Architect
CIDCO Ltd., CIDCO Bhavan
CBD Belapur
NEW BOMBAY

ESTATE OFFICER (II)
CIDCO LTD.
ESTATE OFFICER (II)
CIDCO LTD.

१ विष्णू शिवाजी काम