

REVISED RESIDENTIAL BUILDING
IN S. NO. 297/2/2 PART, (CTS NO. 6245 PT.), AT PATHARDI SHIWAR, NASHIK.
FOR CHAIRMAN, BHARATRATNA Dr. BABASAHEB AMBEDKAR
(BACKWARD CLASSES) SAHAKARI GHRUHANIRMAN SANSTHA, PATHARDI, NASHIK.

APPROVED

The Plans amended in
As per the conditions mentioned in
the accompanying commencement
Certificate No. B2499 dated 28/06/2023
2023


Executive Engineer
TOWN PLANNING
Nashik Municipal Corporation
Nashik

STATEMENT 2 (S. NO. 9 (a) I)		1/2
PROPOSED BUILDING		
FLOOR NO.	TOTAL BUILUP AREA OF FLOOR AS PER OUTER CONSTRUCTION LINE	
2	3	
GROUND FLR.	NIL	
FIRST FLR.	417.68	

FORM FOR STATEMENT 2 PROPOSED BUILDING			1/2
BUILDING NO.	FLOOR NO.	TOTAL BUILTUP AREA OF FLOOR IN SQ. MT. (EXCLUDING INTERNAL WALLS)	
BUILDING NO. 1	GROUND FLR.	NIL	
	FIRST FLR.	417.68	
	SECOND FLR.	417.68	
	THIRD FLR.	417.68	
	FOURTH FLR.	410.46	
	TOTAL	1663.50	

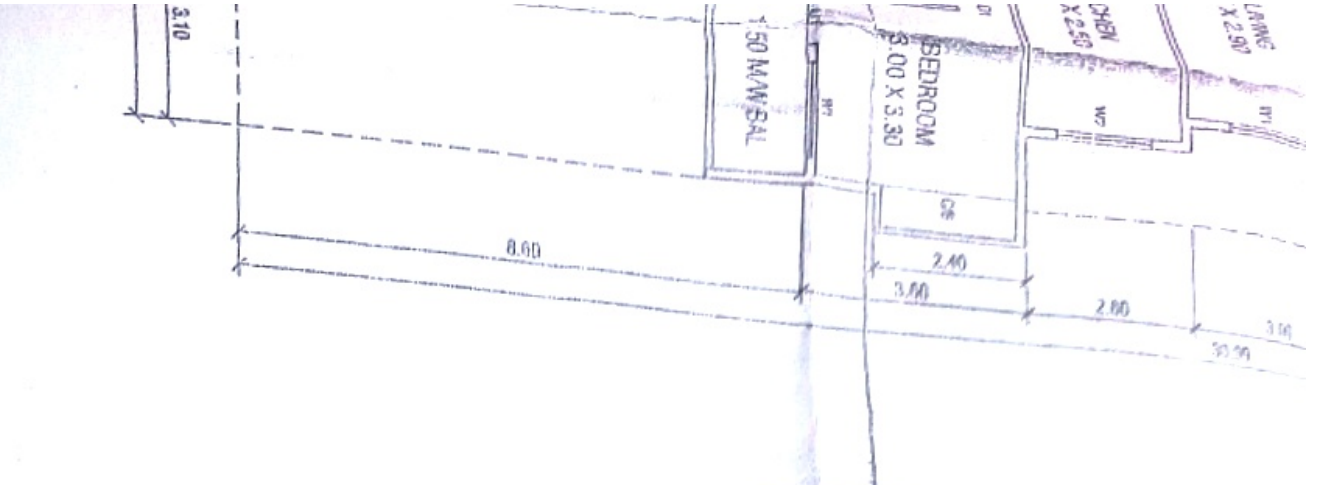
FORM FOR STATEMENT 2 PROPOSED BUILDING			2/2
BUILDING NO.	FLOOR NO.	TOTAL BUILTUP AREA OF FLOOR IN SQ. MT. (EXCLUDING INTERNAL WALLS)	
BUILDING NO. 2	GROUND FLR.	18.27	
	FIRST FLR.	458.37	
	SECOND FLR.	458.37	
	THIRD FLR.	458.37	
	FOURTH FLR.	460.27	
	TOTAL	1851.75	

TOTAL BUILTUP AREA -
 BUILTUP AREA OF BLDG. NO. 1 + BUILTUP AREA OF BLDG. NO. 2
 = (1663.50 + 1851.75) SQ.MT.
 = 3515.25 SQ.MT.

CARPET AREA STATEMENT OF TENEMENT						
WING	TENEMENT NO.	CARPET AREA IN SQ.MT.	BALCONY AREA IN SQ.MT.	TOTAL CARPET AREA IN SQ.MT.	NO. OF TENEMENT	TOTAL CARPET AREA IN SQ.MT.
'A'	1, 2, 5, 6, 9, 10, 13, 14	56.07	4.13	60.20	8	481.60
	3, 7, 11, 15	50.50	4.13	54.63	4	218.52
	4, 8, 12, 16	53.92	4.13	58.05	4	232.20
'B'	1, 5, 9, 13	41.14	—	41.14	4	164.56
	2, 6, 10, 14	30.40	—	30.40	4	121.60
	3, 7, 11	21.83	—	21.83	3	65.49
	15	15.16	—	15.16	1	15.16
	4, 8, 12	21.88	—	21.88	4	87.52
'C'	4, 8, 12, 16	41.14	—	41.14	4	164.56
	3, 7, 11, 15	29.12	—	29.12	4	116.48
	2, 6, 10, 14	42.02	—	42.02	4	168.08
	1, 5, 9, 13	40.76	—	40.76	4	163.04
'D'	3, 4, 7, 8, 11, 12, 15, 16	56.07	4.13	60.20	8	481.60
	2, 6, 10, 14	50.50	4.13	54.63	4	218.52
	1, 5, 9, 13	53.92	4.13	58.05	4	232.20
				TOTAL	63	2931.13

NOTE:- 1) CARPET AREA GIVEN EXCLUDING INTERNAL WALLS.
 2) SCHEME IS UNDER SOCIETY DEVELOPMENT SO NO RERA ACT APPLICABLE.

(Signature)
 चेअरमन / व्हा.चेअरमन / सेक्रेटरी
 भारतल डॉ. बाबासाहेब आंबेडकर भागासवर्गीय
 निर्माण संस्था, पाथर्डी, नाशिक



NOTE:- 1) CASSET AREA GIVEN EXCLUDING INTERNAL WALLS
2) SCHEME IS UNDER SOCIETY APPROVAL OF MHCT SU
NO RERA ACT APPLICABLE

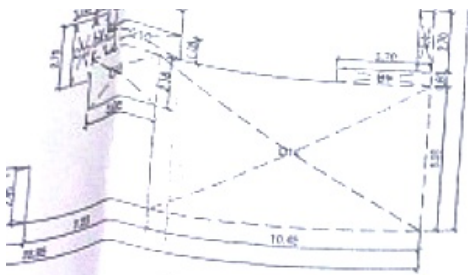
NO.	AREA (SQ. FT.)	AREA (SQ. M.)	PERCENTAGE	AMOUNT
1	48.02	4.43	1.43	182.04
2	47.54	4.39	1.43	182.04
3	50.20	4.64	1.53	182.04
4	21.03	1.94	0.63	182.04
5	18.10	1.68	0.54	182.04
6	21.88	2.02	0.67	182.04
7	41.14	3.80	1.24	182.04
8	25.12	2.32	0.75	182.04
9	37.10.05	3.43	1.12	182.04
10	2.6.10.14	2.40	0.77	182.04
11	1.5.9.13	1.41	0.45	182.04
12	3.4.7.8.11.12.15.16	3.17	0.98	182.04
13	2.6.10.14	2.40	0.77	182.04
14	50.50	4.63	1.53	182.04
15	53.92	4.98	1.61	182.04
TOTAL				232.20

[Signature]
चेअरमन / व्हा.चेअरमन / सेक्रेटरी
 भारतल हॉ. बाबासाहेब आंबेडकर भगवत्सवणीय
 सहकारी गृहनिर्माण संस्था, पायडी, नाशिक

[Signature]
 STRUCTURAL ENG.

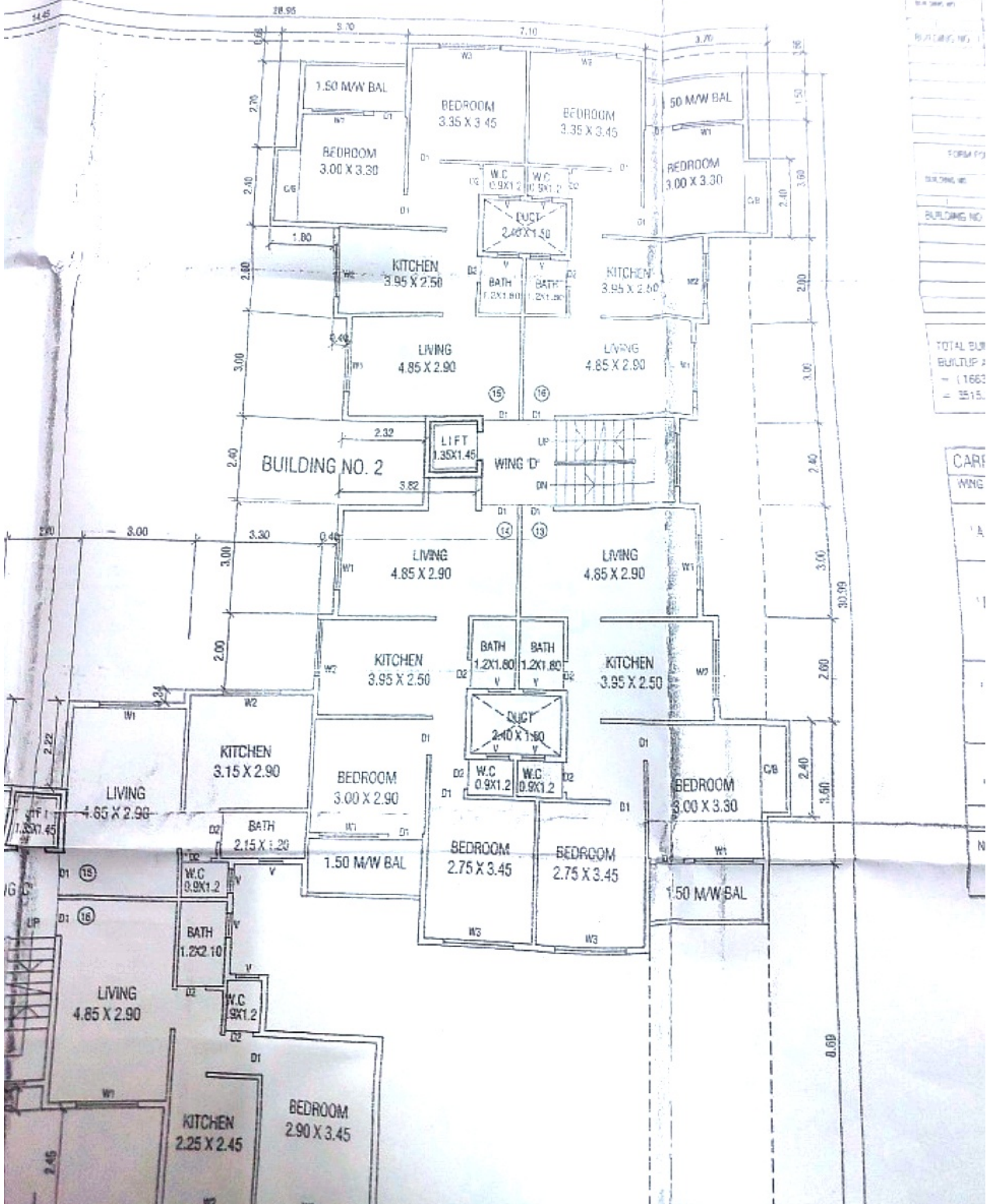
ARCHITECT'S SIGNATURE
[Signature]
M. R. BHAGAT & ASSOCIATES
 ARCHITECTS, INTERIOR DESIGNERS & VALUERS
 201, DAMODAR CHAWBERNS, BEHIND SHIVAJI GARDEN, NASHIK.
 REG. NO. CA 1191/05109

JOB NO.	DRG. NO.	DATE	SCALE	DRAWN BY	CHECKED BY
573	1	20/06/2023	AS SHOWN	VSH	MAHESH



0.1500	1.1100	1.01	8.15	SOMT
0.1500	1.1100	1.01	2.24	SOMT
0.1500	1.4450	1.85	1.10	SOMT
				TOTAL
				47.90

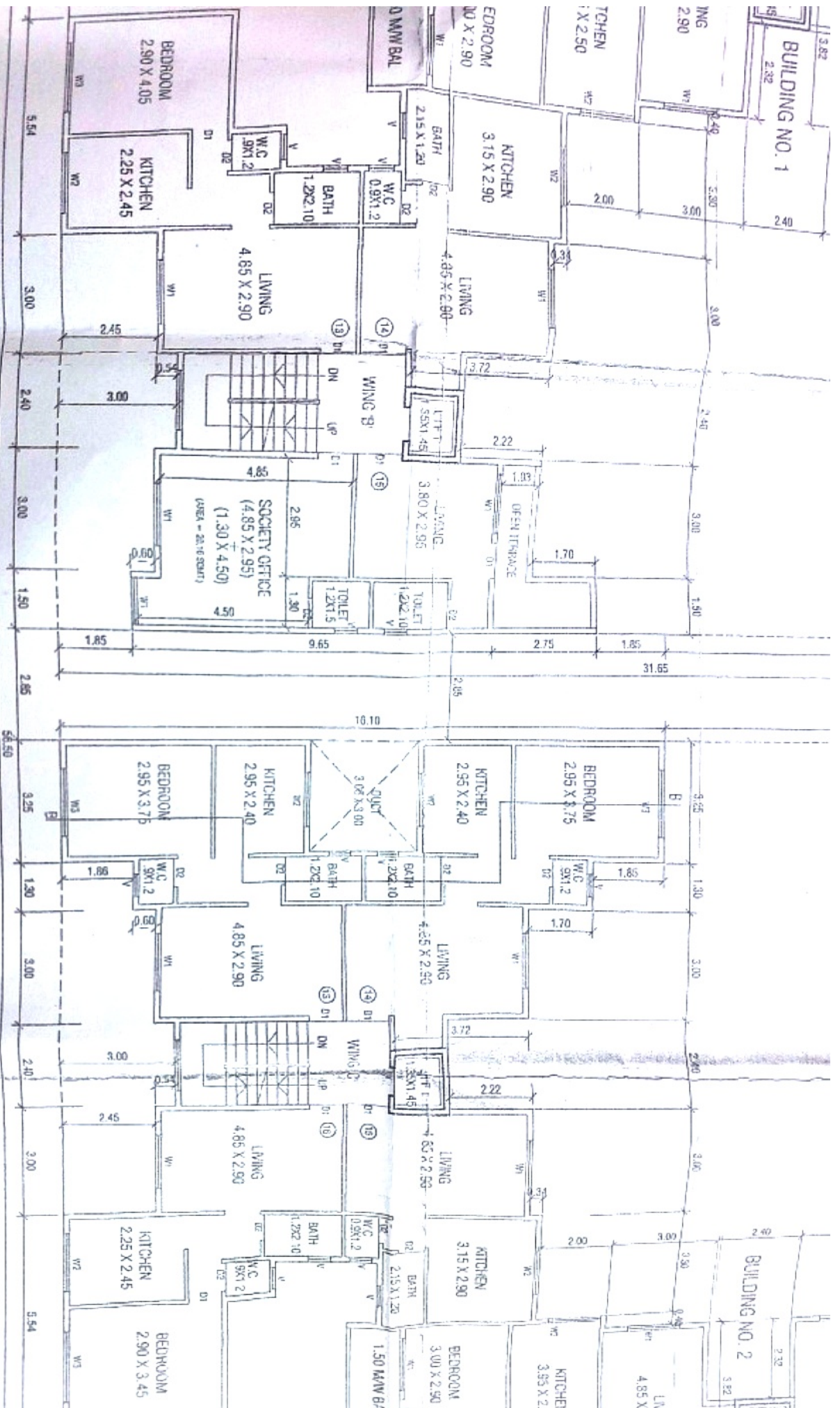
NO.	SIZE	TYPE	REMARKS
W1	2.70 X 2.30	M.S. GRADE WINDOW	
W2	2.70 X 2.30	M.S. GRADE WINDOW	
W3	2.70 X 2.30	M.S. GRADE WINDOW	
W4	2.70 X 2.30	M.S. GRADE WINDOW	
W5	2.70 X 2.30	M.S. GRADE WINDOW	
W6	2.70 X 2.30	M.S. GRADE WINDOW	
W7	2.70 X 2.30	M.S. GRADE WINDOW	
W8	2.70 X 2.30	M.S. GRADE WINDOW	



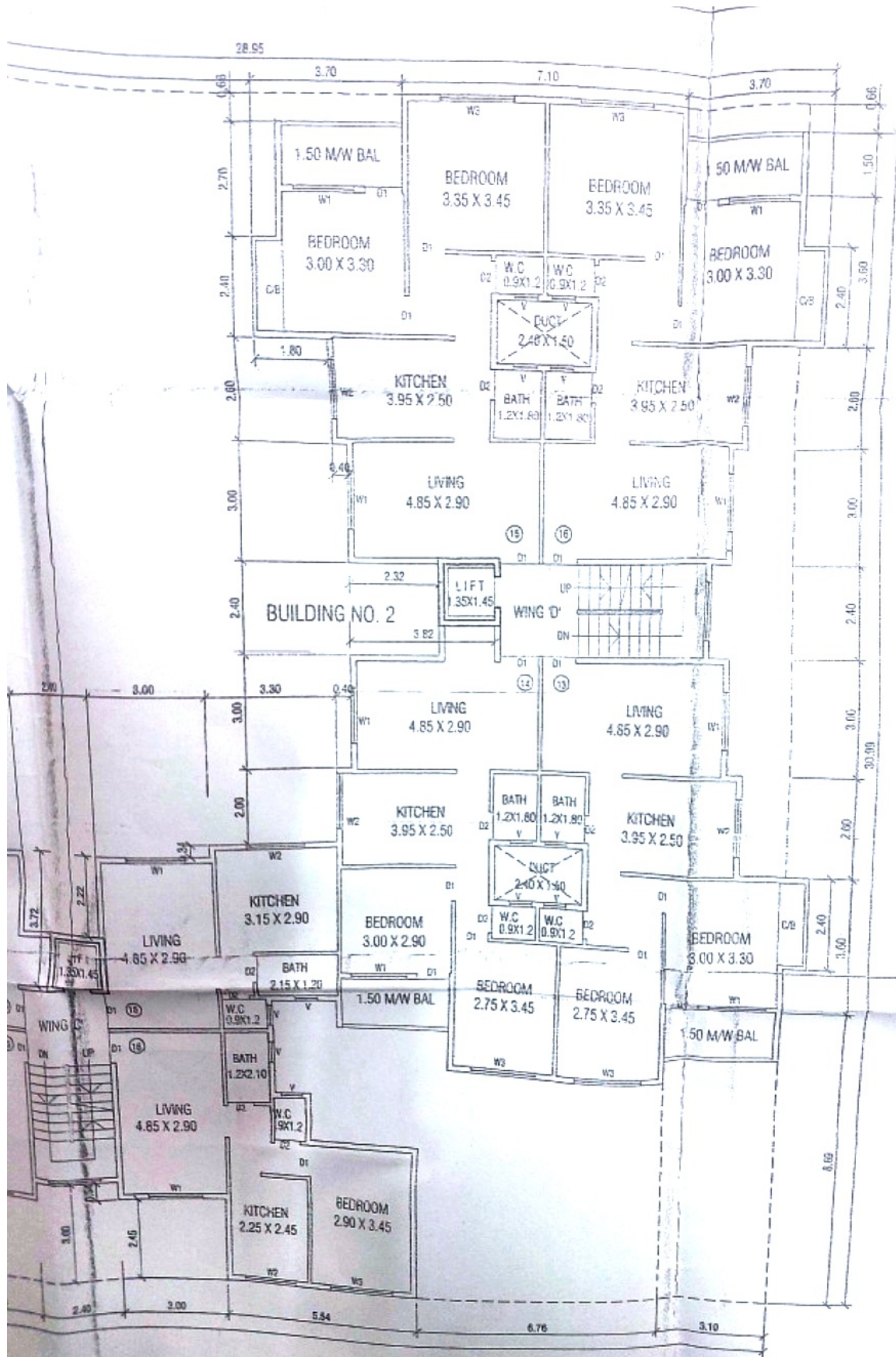
FORM FOR 1
FORM FOR 2
FORM FOR 3
FORM FOR 4
FORM FOR 5
FORM FOR 6
FORM FOR 7
FORM FOR 8
FORM FOR 9
FORM FOR 10
FORM FOR 11
FORM FOR 12
FORM FOR 13
FORM FOR 14
FORM FOR 15

TOTAL BUIL
 BUILUP 2
 = 11662
 = 3515.

CARE
 WING

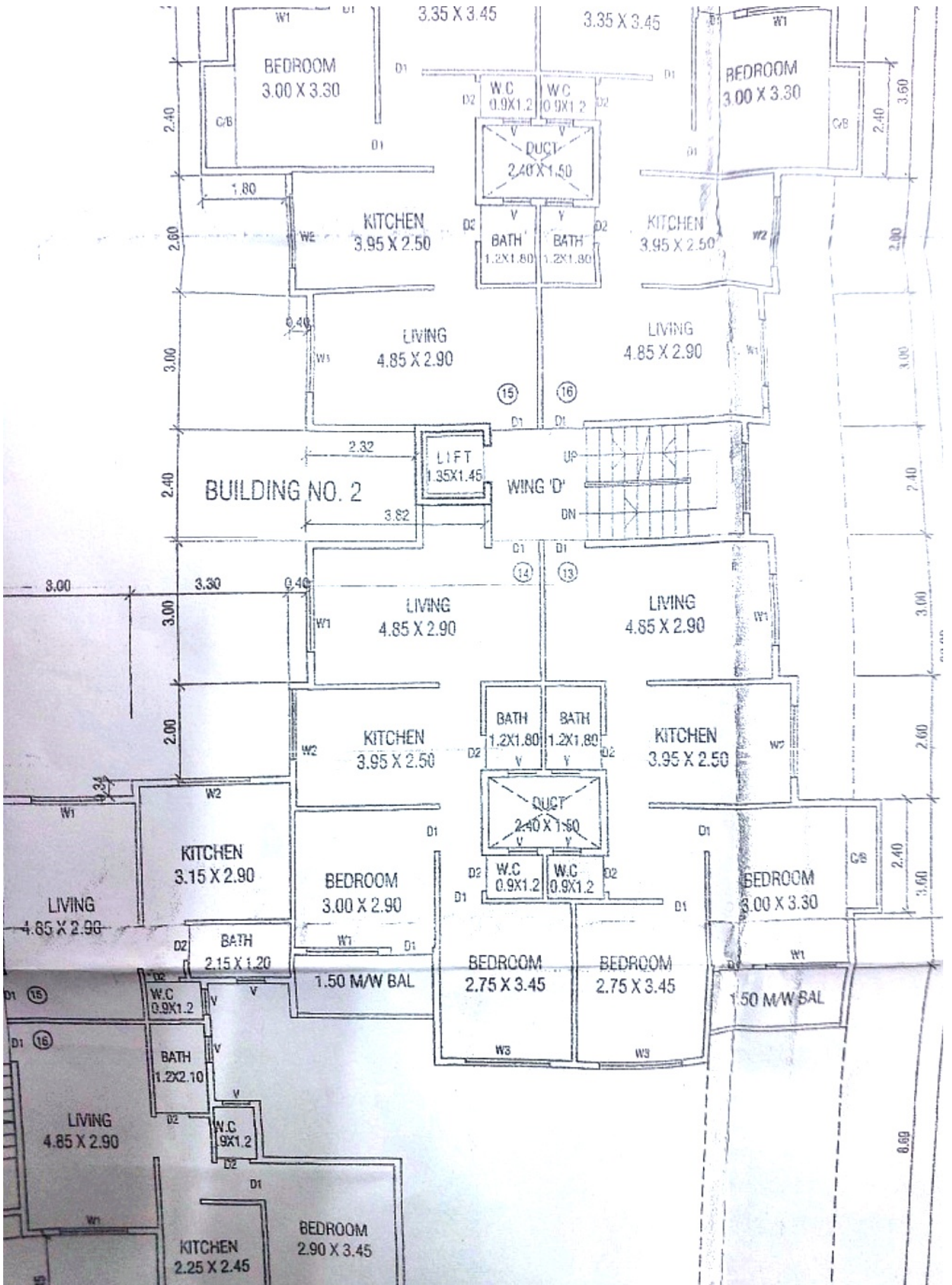


FOURTH FLOOR PLAN



BUILDING
1
BUILDING
FORM
BUILDING NO.
1
BUILDING NO.
TOTAL BUILT
BUILDUP ARE
- (1663.50
- 3515.25)

CARPET
WING
'A'
'B'
'C'
'D'
NOTE- 1) CARP
2) SCHA
NO FR



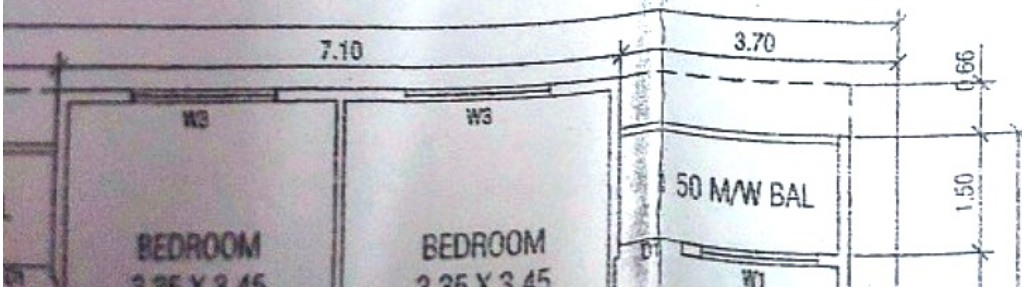
IP AREA ON FOURTH FLOOR

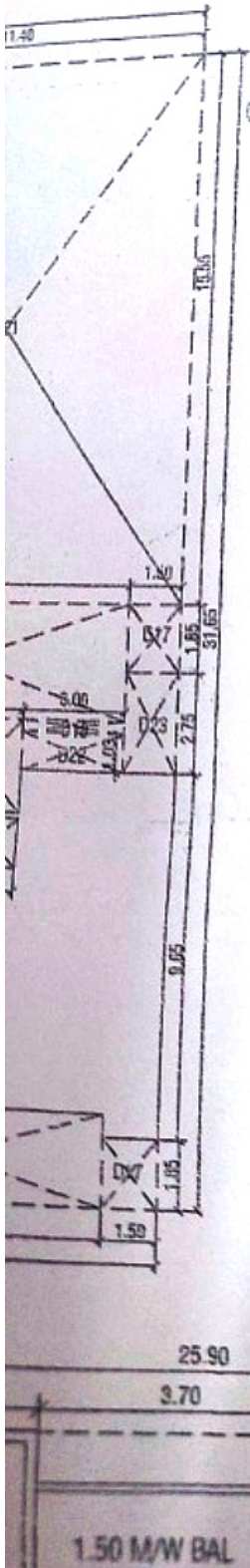
IF BLOCK 'A1' - DEDUCTIONS
 .95 X 31.65) - DEDUCTIONS
 3.27 - 457.90) SQMT.
 .37 SQMT.

O DEDUCTIONS		
3 D1 = 3.70 X 0.66 X 3	---	7.38 SQMT.
3 D2 = 0.60 X 2.70 X 5	---	4.06 SQMT.
2 D3 = 2.40 X 1.50 X 2	---	7.20 SQMT.
3 D4 = 1.80 X 2.60 X 3	---	14.04 SQMT.
4 D5 = 2.20 X 3.00 X 4	---	26.40 SQMT.
1 D6 = 2.75 X 2.40 X 1	---	6.60 SQMT.
2 D7 = 1.45 X 1.35 X 2	---	3.92 SQMT.
1 D8 = 4.52 X 2.40 X 1	---	10.85 SQMT.
1 D9 = 1.80 X 2.00 X 1	---	3.60 SQMT.
1 D10 = 3.10 X 1.06 X 1	---	3.29 SQMT.
1 D11 = 0.75 X 1.87 X 1	---	1.40 SQMT.
1 D12 = 1.00 X 2.75 X 1	---	2.75 SQMT.
1 D13 = 3.05 X 2.18 X 1	---	6.65 SQMT.
1 D14 = 10.45 X 6.53 X 1	---	68.24 SQMT.
1 D15 = 6.40 X 2.45 X 1	---	10.85 SQMT.
1 D16 = 2.40 X 0.54 X 1	---	1.30 SQMT.
2 D17 = 1.30 X 1.85 X 2	---	4.81 SQMT.
2 D18 = 3.00 X 0.34 X 2	---	2.04 SQMT.
1 D19 = 2.40 X 2.55 X 1	---	6.14 SQMT.
1 D20 = 9.90 X 3.21 X 1	---	31.78 SQMT.
1 D21 = 3.05 X 3.00 X 1	---	9.15 SQMT.
1 D22 = 14.45 X 15.55 X 1	---	224.70 SQMT.
O TOTAL		457.90 SQMT.

DOORS WINDOWS SCHEDULE		
D1	0.90 X 2.10	T.W. FRAME, GLAZED SHUTTERS
D2	0.75 X 2.10	T.W. FRAME, FLUSHED
W1	1.50 X 1.20	M.S. GLAZED WINDOW
W2	1.50 X 0.90	M.S. GLAZED WINDOW
W3	1.50 X 1.20	M.S. GLAZED WINDOW
V	0.60 X 0.60	M.S. GLASS LOUVERS

FORM FOR STATEMENT PROPOS	
BUILDING NO.	FLOOR N
1	2
BUILDING NO. 1	GROUND
	FIRST FL
	SECOND
	THIRD FL
	FOURTH I
	TOTAL





○ BUILT UP AREA ON FOURTH FLOOR

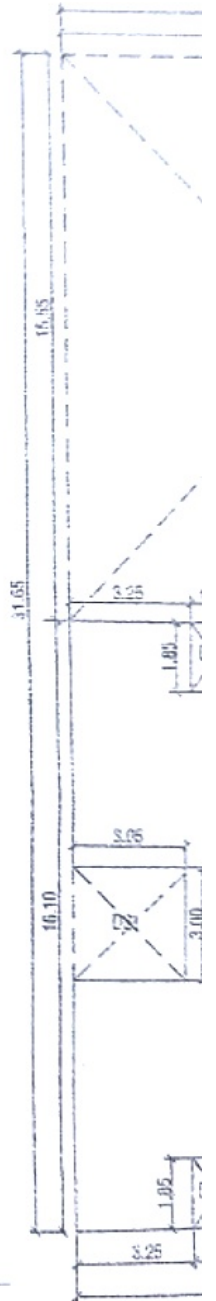
○ AREA OF BLOCK 'A1' - DEDUCTIONS
 = [(25.90 X 31.65) - DEDUCTIONS
 = (819.74 - 409.28) SQMT.
 = 410.466 SQMT.

○ DEDUCTIONS

- 3 D1 = 3.70 X 0.66 X 3 --- 7.33 SQMT.
- 3 D2 = 0.60 X 2.70 X 3 --- 4.86 SQMT.
- 2 D3 = 2.40 X 1.50 X 2 --- 7.20 SQMT.
- 3 D4 = 1.80 X 2.60 X 3 --- 14.04 SQMT.
- 4 D5 = 2.20 X 3.00 X 4 --- 26.40 SQMT.
- 1 D6 = 2.75 X 2.40 X 1 --- 6.60 SQMT.
- 2 D7 = 1.45 X 1.35 X 2 --- 3.92 SQMT.
- 1 D8 = 4.52 X 2.40 X 1 --- 10.85 SQMT.
- 1 D9 = 1.80 X 2.00 X 1 --- 3.60 SQMT.
- 1 D10 = 3.10 X 1.06 X 1 --- 3.29 SQMT.
- 1 D11 = 0.75 X 1.87 X 1 --- 1.40 SQMT.
- 1 D12 = 1.00 X 2.75 X 1 --- 2.75 SQMT.
- 1 D13 = 3.05 X 2.18 X 1 --- 6.65 SQMT.
- 1 D14 = 10.45 X 6.53 X 1 --- 68.24 SQMT.
- 1 D15 = 6.40 X 2.45 X 1 --- 10.85 SQMT.
- 1 D16 = 2.40 X 0.54 X 1 --- 1.30 SQMT.
- 2 D17 = 1.50 X 1.85 X 2 --- 5.55 SQMT.
- 2 D18 = 3.00 X 0.34 X 2 --- 2.04 SQMT.
- 1 D19 = 2.40 X 2.56 X 1 --- 6.14 SQMT.
- 1 D20 = 9.90 X 3.21 X 1 --- 31.78 SQMT.
- 1 D21 = 11.40 X 15.55 X 1 --- 177.27 SQMT.
- 1 D22 = 3.00 X 1.03 X 1 --- 3.10 SQMT.
- 1 D23 = 1.50 X 2.75 X 1 --- 4.12 SQMT.

○ TOTAL --- 409.28 SQMT

○ AREA DI



FOURTH FLOOR PLAN



TABLE 1 - ROOM SCHEDULE

NO.	ROOM NO.	ROOM NAME	AREA (SQ. FT.)	FINISHES
1	201	OFFICE	150	...
2	202	OFFICE	150	...
3	203	OFFICE	150	...
4	204	OFFICE	150	...
5	205	OFFICE	150	...
6	206	OFFICE	150	...
7	207	OFFICE	150	...
8	208	OFFICE	150	...
9	209	OFFICE	150	...
10	210	OFFICE	150	...
11	211	OFFICE	150	...
12	212	OFFICE	150	...
13	213	OFFICE	150	...
14	214	OFFICE	150	...
15	215	OFFICE	150	...
16	216	OFFICE	150	...
17	217	OFFICE	150	...
18	218	OFFICE	150	...
19	219	OFFICE	150	...
20	220	OFFICE	150	...
21	221	OFFICE	150	...
22	222	OFFICE	150	...
23	223	OFFICE	150	...
24	224	OFFICE	150	...
25	225	OFFICE	150	...
26	226	OFFICE	150	...
27	227	OFFICE	150	...
28	228	OFFICE	150	...
29	229	OFFICE	150	...
30	230	OFFICE	150	...
31	231	OFFICE	150	...
32	232	OFFICE	150	...
33	233	OFFICE	150	...
34	234	OFFICE	150	...
35	235	OFFICE	150	...
36	236	OFFICE	150	...
37	237	OFFICE	150	...
38	238	OFFICE	150	...
39	239	OFFICE	150	...
40	240	OFFICE	150	...
41	241	OFFICE	150	...
42	242	OFFICE	150	...
43	243	OFFICE	150	...
44	244	OFFICE	150	...
45	245	OFFICE	150	...
46	246	OFFICE	150	...
47	247	OFFICE	150	...
48	248	OFFICE	150	...
49	249	OFFICE	150	...
50	250	OFFICE	150	...
51	251	OFFICE	150	...
52	252	OFFICE	150	...
53	253	OFFICE	150	...
54	254	OFFICE	150	...
55	255	OFFICE	150	...
56	256	OFFICE	150	...
57	257	OFFICE	150	...
58	258	OFFICE	150	...
59	259	OFFICE	150	...
60	260	OFFICE	150	...
61	261	OFFICE	150	...
62	262	OFFICE	150	...
63	263	OFFICE	150	...
64	264	OFFICE	150	...
65	265	OFFICE	150	...
66	266	OFFICE	150	...
67	267	OFFICE	150	...
68	268	OFFICE	150	...
69	269	OFFICE	150	...
70	270	OFFICE	150	...
71	271	OFFICE	150	...
72	272	OFFICE	150	...
73	273	OFFICE	150	...
74	274	OFFICE	150	...
75	275	OFFICE	150	...
76	276	OFFICE	150	...
77	277	OFFICE	150	...
78	278	OFFICE	150	...
79	279	OFFICE	150	...
80	280	OFFICE	150	...
81	281	OFFICE	150	...
82	282	OFFICE	150	...
83	283	OFFICE	150	...
84	284	OFFICE	150	...
85	285	OFFICE	150	...
86	286	OFFICE	150	...
87	287	OFFICE	150	...
88	288	OFFICE	150	...
89	289	OFFICE	150	...
90	290	OFFICE	150	...
91	291	OFFICE	150	...
92	292	OFFICE	150	...
93	293	OFFICE	150	...
94	294	OFFICE	150	...
95	295	OFFICE	150	...
96	296	OFFICE	150	...
97	297	OFFICE	150	...
98	298	OFFICE	150	...
99	299	OFFICE	150	...
100	300	OFFICE	150	...

M. H. BAKER & ASSOCIATES
 ARCHITECTS, ENGINEERS & SURVEYORS
 1000 ...
 ...
 ...

