

Approved as amended in... subject to conditions mentioned in Annexure 'A'...
Metropolitan Regional Planning Authority, Pune.
Chief Executive Officer

SCHEDULE OF DOORS	SIZE	QUANTITY
D	1.00 X 2.25	1
D1	0.98 X 2.25	1
D2	0.70 X 2.25	1
D3	0.70 X 2.25	1
D4	0.83 X 2.25	1
D5	0.83 X 2.25	1
D6	1.00 X 2.25	1
D7	1.00 X 2.25	1
D8	1.00 X 2.25	1
D9	1.00 X 2.25	1

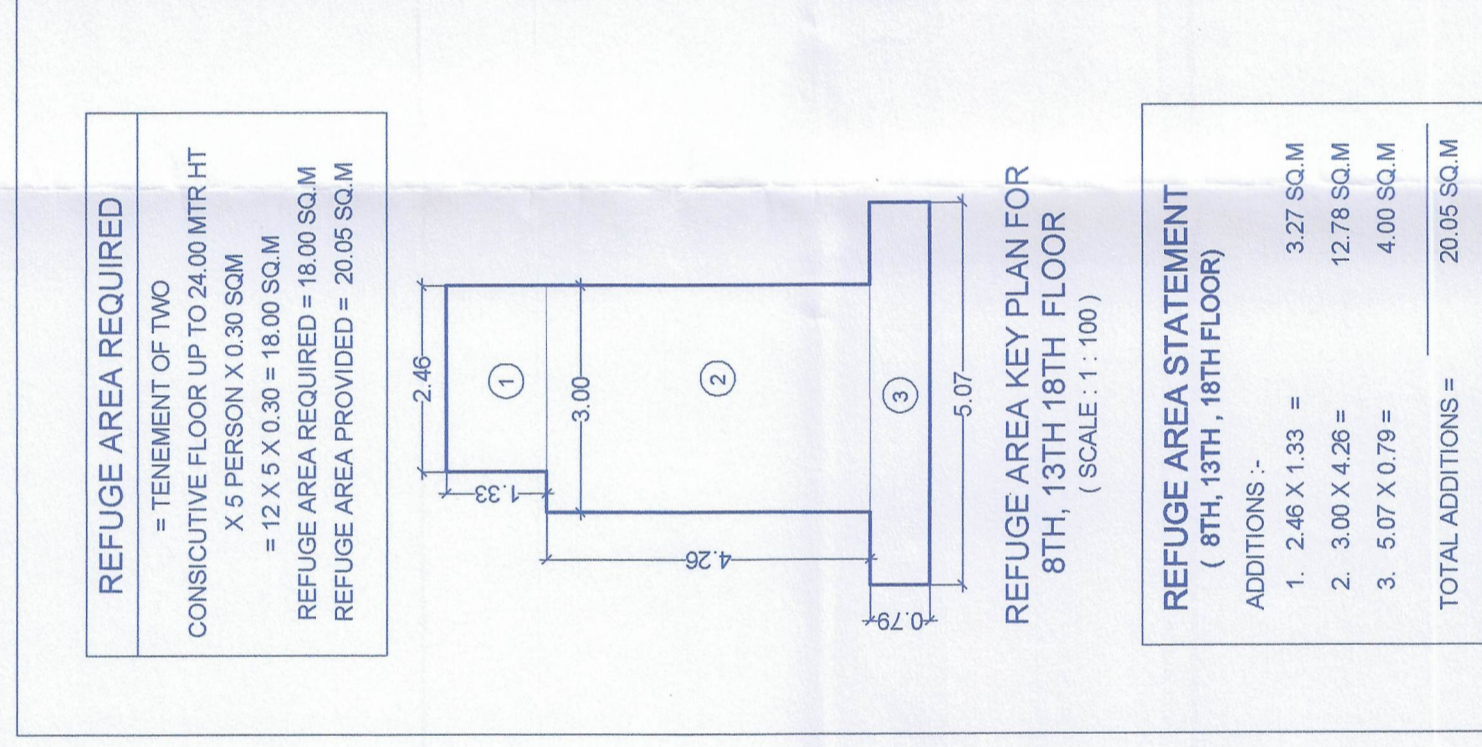
PROJECT:
REVISED GROUP HOUSING SCHEME AT
S.NO. 98/1(P), 98/2, 99/1, 99/2(P), 99/3(P), 99/4(P), 101/2(P) &
101/3, PLOT-2 AT VILLAGE-MAN, TALUKA-MULSHI, PUNE
NAME & SIGN OF OWNER / PAH

ALL THE RESPONSIBILITY PERTAINING TO WORKING DRAWINGS, ARCHITECTURAL DESIGN AND SUPERVISION SHALL BE OF ME / US. THIS MUNICIPAL DRAWING HAS BEEN PREPARED ON THE BASIS OF INFORMATION, DRAWINGS AND DOCUMENTS PROVIDED BY THE CLIENT AND ALL THE NECESSARY CONSENTS / APPROVALS / NOCs REQUIRED AS PER PERIA ACT INCLUDING THE NECESSARY REVIEWS BY THE MUNICIPAL ENGINEER SHALL BE THE RESPONSIBILITY OF THE CLIENT. THE CLIENT SHALL BE RESPONSIBLE FOR THE DESIGN AND DOCUMENTS PROVIDED BY ANYONE WORKING FOR IT SHALL NOT BE RESPONSIBLE FOR THE SAME IN ANY MANNER.

AUTHORIZED SIGNATORY
MR. JITESH S. BONDALWAR
M/S JOYVILLE SHAPESHOT HOUSING PRIVATE LIMITED.
SP-CENTRE, 4144 MIRRO DESAI MARG, COULABA, MUMBAI - 400006.
DESIGN CONSULTANT:
MS. ABHIJIT PAN ARCHITECTS AND PLANNERS

DATE	SCALE	DRAWN BY	CHECKED BY
20/09/2021	1:100	ANUJA	SSR

AR ABHIJIT KONDE
CRYSTAL ARCH
107-112, Zeebh Complex, Opp. Agriculture College,
Tel: 91-020-2533014 / 979030389
Email: office@crystalarch.in
Architectural & Interior Planning & Designing
CA/9822323

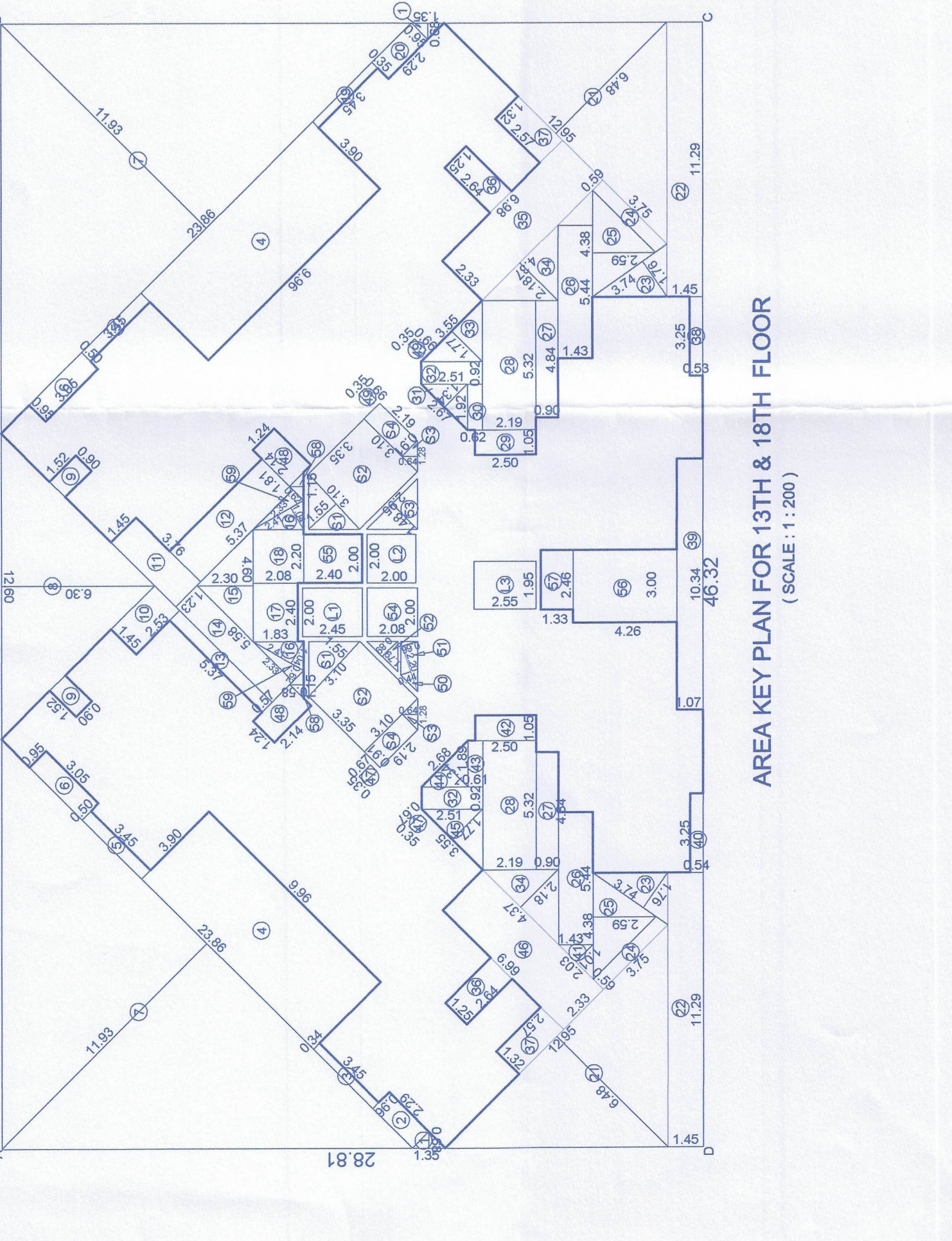


REFUGE AREA REQUIRED
= TENEMENT OF TWO
CONSECUTIVE FLOOR UP TO 24.00 MTR HT
X 5 PERSON X 0.30 SQM
REFUGE AREA REQUIRED = 18.00 SQM
REFUGE AREA PROVIDED = 20.05 SQM

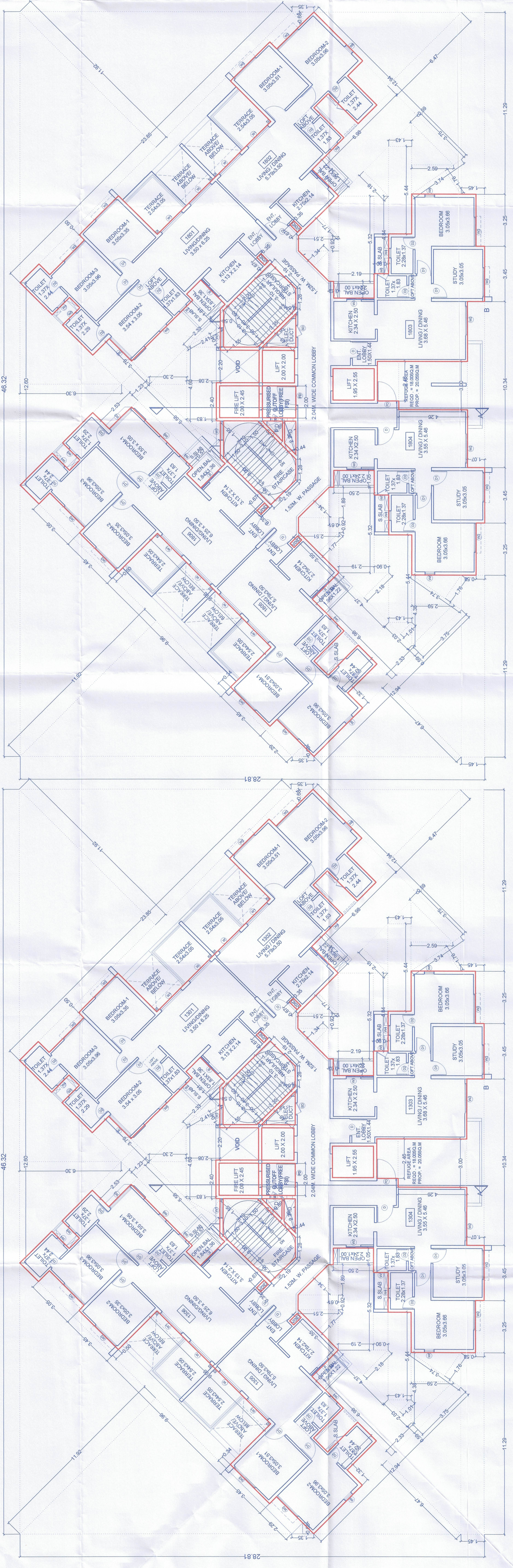
REFUGE AREA KEY PLAN FOR 8TH, 13TH, 18TH FLOOR
(SCALE: 1:100)

REFUGE AREA STATEMENT
(8TH, 13TH, 18TH FLOOR)
ADDITIONS -
1. 2.46 X 1.33 = 3.27 SQ.M
2. 3.00 X 4.20 = 12.78 SQ.M
3. 5.07 X 0.79 = 4.00 SQ.M
TOTAL ADDITIONS = 20.05 SQ.M

BUILT UP AREA STATEMENT - 13TH & 18TH FLOOR		13TH FLOOR		18TH FLOOR	
STANDARD DEDUCTIONS -		1.95 SQ.M	1.95 SQ.M	1.95 SQ.M	1.95 SQ.M
1. 1/2 X 0.30 X 0.60 X 2 =	0.36 SQ.M	2.35 SQ.M	2.35 SQ.M	2.35 SQ.M	2.35 SQ.M
2. 1/2 X 0.30 X 0.30 X 2 =	0.09 SQ.M	1.17 SQ.M	1.17 SQ.M	1.17 SQ.M	1.17 SQ.M
3. 3.45 X 0.34 =	1.17 SQ.M	7.79 SQ.M	7.79 SQ.M	7.79 SQ.M	7.79 SQ.M
4. 9.98 X 3.90 X 2 =	77.99 SQ.M	3.90 SQ.M	3.90 SQ.M	3.90 SQ.M	3.90 SQ.M
5. 3.05 X 0.91 =	2.77 SQ.M	3.90 SQ.M	3.90 SQ.M	3.90 SQ.M	3.90 SQ.M
6. 3.05 X 0.91 X 2 =	5.54 SQ.M	3.90 SQ.M	3.90 SQ.M	3.90 SQ.M	3.90 SQ.M
7. 1/2 X 23.86 X 11.69 X 2 =	254.64 SQ.M	3.90 SQ.M	3.90 SQ.M	3.90 SQ.M	3.90 SQ.M
8. 1/2 X 12.60 X 6.30 =	39.96 SQ.M	47. 0.87 X 0.35 X 2 =	0.47 SQ.M	0.47 SQ.M	0.47 SQ.M
9. 1/2 X 1.70 X 1.70 =	1.45 SQ.M	48. 0.88 X 0.35 X 2 =	0.48 SQ.M	0.48 SQ.M	0.48 SQ.M
10. 2.93 X 1.16 =	3.40 SQ.M	49. 1/2 X 2.00 X 0.4 =	0.40 SQ.M	0.40 SQ.M	0.40 SQ.M
11. 3.78 X 1.45 =	5.48 SQ.M	50. 1/2 X 2.00 X 0.4 =	0.40 SQ.M	0.40 SQ.M	0.40 SQ.M
12. 1.81 X 5.24 =	9.49 SQ.M	51. 1/2 X 2.00 X 0.4 =	0.40 SQ.M	0.40 SQ.M	0.40 SQ.M
13. 1.81 X 5.24 =	9.49 SQ.M	52. 1/2 X 2.00 X 0.4 =	0.40 SQ.M	0.40 SQ.M	0.40 SQ.M
14. 1/2 X 5.48 X 1.48 =	4.05 SQ.M	53. 1/2 X 2.00 X 0.4 =	0.40 SQ.M	0.40 SQ.M	0.40 SQ.M
15. 1/2 X 4.60 X 2.30 =	5.29 SQ.M	54. 2.00 X 2.40 =	4.80 SQ.M	4.80 SQ.M	4.80 SQ.M
16. 1/2 X 2.94 X 1.47 X 2 =	4.35 SQ.M	55. 2.00 X 2.40 =	4.80 SQ.M	4.80 SQ.M	4.80 SQ.M
17. 2.48 X 1.53 =	3.79 SQ.M	56. 3.00 X 2.00 =	6.00 SQ.M	6.00 SQ.M	6.00 SQ.M
18. 2.28 X 2.98 =	6.79 SQ.M	57. 2.48 X 1.53 =	3.79 SQ.M	3.79 SQ.M	3.79 SQ.M
19. 3.45 X 0.35 =	1.21 SQ.M	780.33 SQ.M			
20. 2.93 X 0.56 =	1.64 SQ.M				
21. 11.28 X 1.65 X 2 =	37.13 SQ.M				
22. 1/2 X 3.74 X 1.78 X 2 =	10.15 SQ.M				
23. 3.95 X 0.89 X 2 =	7.01 SQ.M				
24. 4.42 SQ.M	4.42 SQ.M				
25. 5.44 X 1.43 X 2 =	15.56 SQ.M				
26. 5.44 X 1.43 X 2 =	15.56 SQ.M				
27. 4.84 X 0.90 X 2 =	8.71 SQ.M				
28. 5.37 X 2.18 X 2 =	23.36 SQ.M				
29. 1.89 X 0.82 =	1.55 SQ.M				
30. 1.89 X 0.82 =	1.55 SQ.M				
31. 1/2 X 2.67 X 1.34 =	1.79 SQ.M				
32. 0.87 X 2.51 X 2 =	4.39 SQ.M				
33. 1/2 X 4.37 X 2.18 X 2 =	9.53 SQ.M				
34. 1/2 X 4.37 X 2.18 X 2 =	9.53 SQ.M				
35. 2.33 X 6.98 =	16.26 SQ.M				
36. 2.84 X 1.25 X 2 =	7.14 SQ.M				
37. 3.25 X 0.53 =	1.72 SQ.M				
38. 3.25 X 0.53 =	1.72 SQ.M				
39. 10.34 X 1.07 =	11.06 SQ.M				
TOTAL DEDUCTIONS =	134.46 SQ.M				
NET AREA = 134.46 - 629.27 =	508.21 SQ.M				



AREA KEY PLAN FOR 13TH & 18TH FLOOR
(SCALE: 1:200)



18TH FLOOR (REFUGE) PLAN
(SCALE: 1:100)

REFUGE FLOOR PLAN
13TH FLOOR
(SCALE: 1:100)