

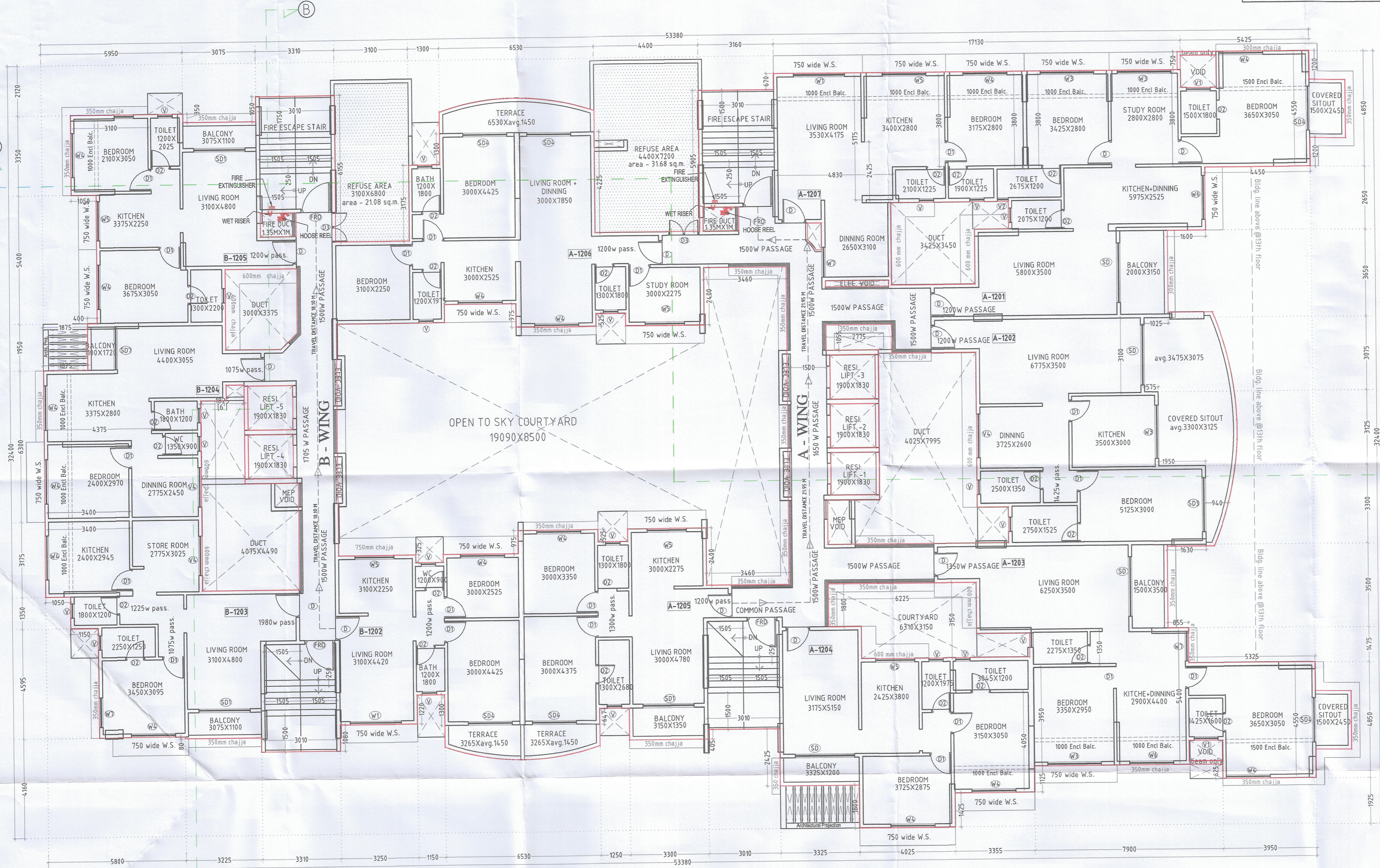
REMARKS OF  
PEN MUNICIPAL COUNCIL

Approved as ammended in Green/Red colour for  
purpose of Building permission, purpose vide letter No  
पेन/आ.स. ९ /अ.दि.३५६/ इमारत परवानगी २२३-२०२४  
दि. २०९ / १९/ ०९/ २०२४ and  
condition mentioned therein.



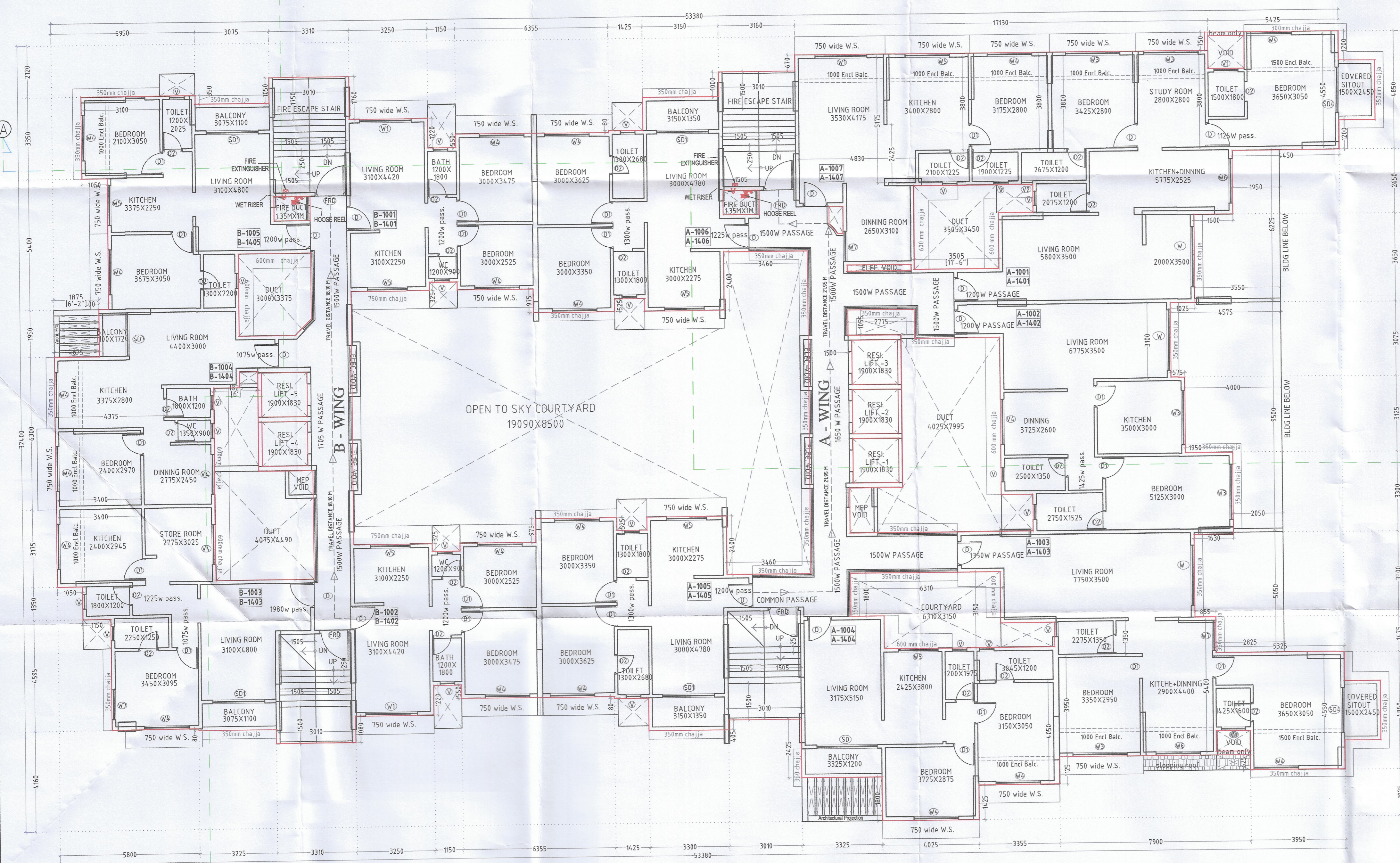
**LEGEND**

|                   |  |
|-------------------|--|
| FIRE FEEDER       |  |
| WET RISER         |  |
| DAMPER            |  |
| FIRE EXTINGUISHER |  |



12TH FLOOR PLAN

SCALE 1:100



10TH/14TH FLOOR PLAN

SCALE 1:100



SCHEDULE OF OPENING

| NO. | TYPE | SIZE                      | DESCRIPTION                  |
|-----|------|---------------------------|------------------------------|
| 1   | D    | 1000 X 2150               | FLUSH DOOR                   |
| 2   | D1   | 900 X 2150                | FLUSH DOOR                   |
| 3   | D2   | 800 X 2050                | FLUSH DOOR                   |
| 4   | D3   | 1250 X 2150               | FLUSH DOOR                   |
| 5   | FRD1 | 1500 X 2150               | FIRE RESISTANCE DOOR         |
| 6   | FRD  | 1250 X 2200               | FIRE RESISTANCE DOOR         |
| 7   | W    | 2500 X 1500               | ALUMINUM SLIDING WINDOW      |
| 8   | W1   | 2150 X 1500               | ALUMINUM SLIDING WINDOW      |
| 9   | W2   | 2130 (as per site) X 1250 | ALUMINUM SLIDING WINDOW      |
| 10  | W3   | 2250 X 1500               | ALUMINUM SLIDING WINDOW      |
| 11  | W4   | 1850 X 1500               | ALUMINUM SLIDING WINDOW      |
| 12  | W5   | 1650 X 1200               | ALUMINUM SLIDING WINDOW      |
| 13  | W6   | 1850 X 1200               | ALUMINUM SLIDING WINDOW      |
| 14  | W7   | 1250 X 1500               | ALUMINUM SLIDING WINDOW      |
| 15  | SD   | 2500 X 2000               | ALUMINUM SLIDING WINDOW      |
| 16  | SD1  | 2150 X 2000               | ALUMINUM SLIDING WINDOW      |
| 17  | SD2  | 2130 (as per site) X 2000 | ALUMINUM SLIDING WINDOW      |
| 18  | SD3  | 2250 X 2000               | ALUMINUM SLIDING WINDOW      |
| 19  | SD4  | 1850 X 2000               | ALUMINUM SLIDING WINDOW      |
| 20  | SD5  | 1650 X 2000               | ALUMINUM SLIDING WINDOW      |
| 21  | SD6  | 3000 X 2000               | ALUMINUM SLIDING WINDOW      |
| 22  | V    | 600 X 800                 | FULLY GLAZED VENTILATER      |
| 23  | V1   | 1000 X 800                | FULLY GLAZED VENTILATER      |
| 24  | V2   | 450 X 800                 | FULLY GLAZED VENTILATER      |
| 25  | V4   | 1650 X 800                | FULLY GLAZED VENTILATER      |
| 26  | SW   | 2400 X 1850               | RCC JALI / AL SLIDING WINDOW |

SHEET - 06 OF 07

CONTENT: 10th/14th & 12th floor plan

OWNER: M/S. FND H CONSTRUCTIONS LLP (PARTNERS)  
1) SUBHASH VIMALCHAND JAIN.  
2) DISHANK SUBHASH JAIN.

OWNERS SIGNATURE:  
M/S. FND H CONSTRUCTIONS LLP  
(PARTNERS)

**ABHINAV JOGI & ASSOCIATES**  
IS 9001-2010 CERTIFIED  
ARCHITECTS  
STRUCTURAL DESIGNERS  
GOVT. REGD. VALUERS

1) SUBHASH VIMALCHAND JAIN.  
2) DISHANK SUBHASH JAIN.

|                  |   |
|------------------|---|
| SCALE = 1:100    | JOB NO. DRG. NO.  |
| UNIT: MILLIMETER | F-1/ 100 /AR-03   |
| DATE: 28.08.2023 | 88052711  |
| DRN: AKANKSHA    | Head Office -   |
| CHD: A.J.J.      | 209-B, 2nd floor, Arundhat Sagar Center, Above Wellness |
| APP: A.J.J.      | Forve Road, Colaba, Mumbai, Maharashtra, 400025         |
| DESIGNER: A.J.J. | Head Office -   |
| 1                | 101, Dhana Sahayra, Gita, Chana, Andhra Pradesh,        |
| 2                | Garden Hotel, PANHEL, NAVI MUMBAI, 410 206              |
|                  | 022-27457822, 9930883095                                |
|                  | cheefarchitect@arjogipractice.com                       |
|                  | abhinavjogi@arjogipractice.com                          |