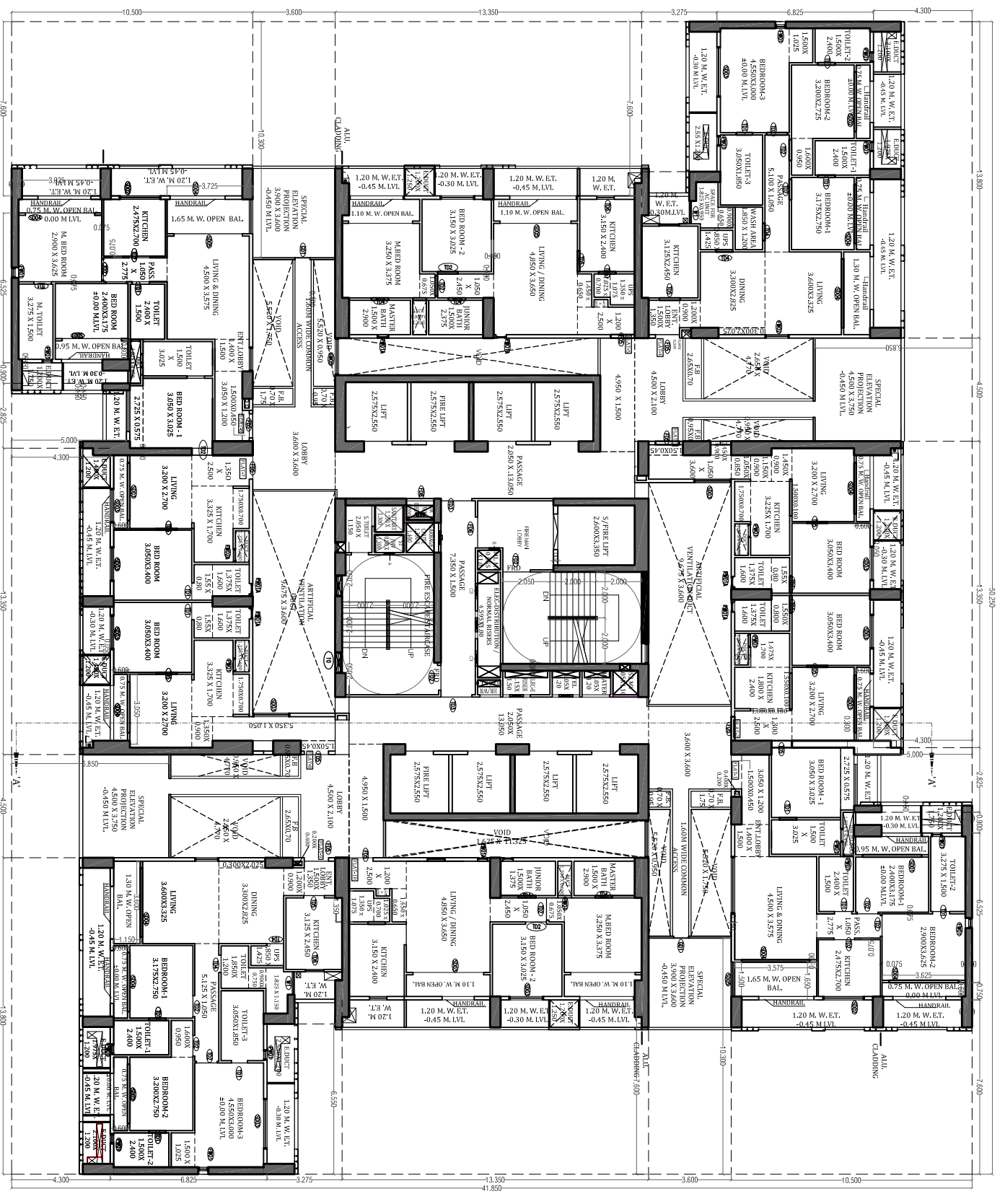


CONTENTS OF SHEET
2ND TO 6TH, 8TH TO 13TH, 15TH TO 20TH, 24TH, 26TH, 33RD FLOOR
PLAN (WING - F11)
LINE AREA DIAGRAM & CARPET AREA STATEMENT

STAMP AND DATE OF APPROVAL OF PLAN

STAMP AND DATE OF RECEIPT OF PLAN



2ND TO 6TH, 8TH TO 13TH, 15TH TO 20TH, 24TH, 26TH, 33RD FLOOR PLAN (WING - F11)
SCALE - 1:100

CARPET AREA STATEMENT

FOR SIMILAR FLOORS: PLAT 1 & 6	FOR SIMILAR FLOORS: PLAT 5 & 10
ENT. LOBBY	ENT. LOBBY
LIVING & DINING	LIVING & DINING
KITCHEN	KITCHEN
PASSAGE	PASSAGE
BEDROOM-1	BEDROOM-1
BEDROOM-2	BEDROOM-2
TWOIT-1	TWOIT-1
TWOIT-2	TWOIT-2
TOTAL CARPET AREA OF PLAT(A)	
= 50116 SQ.MT.	

CARPET AREA STATEMENT

FOR SIMILAR FLOORS: PLAT 1 & 6	FOR SIMILAR FLOORS: PLAT 5 & 10
LIVING & DINING	LIVING & DINING
KITCHEN	KITCHEN
PASSAGE	PASSAGE
BEDROOM-1	BEDROOM-1
BEDROOM-2	BEDROOM-2
TWOIT-1	TWOIT-1
TWOIT-2	TWOIT-2
TOTAL CARPET AREA OF PLAT(A)	
= 50116 SQ.MT.	

CARPET AREA STATEMENT

FOR SIMILAR FLOORS: PLAT 1 & 6	FOR SIMILAR FLOORS: PLAT 5 & 10
LIVING & DINING	LIVING & DINING
KITCHEN	KITCHEN
PASSAGE	PASSAGE
BEDROOM-1	BEDROOM-1
BEDROOM-2	BEDROOM-2
TWOIT-1	TWOIT-1
TWOIT-2	TWOIT-2
TOTAL CARPET AREA OF PLAT(A)	
= 50116 SQ.MT.	

CARPET AREA STATEMENT

FOR SIMILAR FLOORS: PLAT 1 & 6	FOR SIMILAR FLOORS: PLAT 5 & 10
LIVING & DINING	LIVING & DINING
KITCHEN	KITCHEN
PASSAGE	PASSAGE
BEDROOM-1	BEDROOM-1
BEDROOM-2	BEDROOM-2
TWOIT-1	TWOIT-1
TWOIT-2	TWOIT-2
TOTAL CARPET AREA OF PLAT(A)	
= 50116 SQ.MT.	

CARPET AREA STATEMENT

FOR SIMILAR FLOORS: PLAT 1 & 6	FOR SIMILAR FLOORS: PLAT 5 & 10
LIVING & DINING	LIVING & DINING
KITCHEN	KITCHEN
PASSAGE	PASSAGE
BEDROOM-1	BEDROOM-1
BEDROOM-2	BEDROOM-2
TWOIT-1	TWOIT-1
TWOIT-2	TWOIT-2
TOTAL CARPET AREA OF PLAT(A)	
= 50116 SQ.MT.	

CARPET AREA STATEMENT

FOR SIMILAR FLOORS: PLAT 1 & 6	FOR SIMILAR FLOORS: PLAT 5 & 10
LIVING & DINING	LIVING & DINING
KITCHEN	KITCHEN
PASSAGE	PASSAGE
BEDROOM-1	BEDROOM-1
BEDROOM-2	BEDROOM-2
TWOIT-1	TWOIT-1
TWOIT-2	TWOIT-2
TOTAL CARPET AREA OF PLAT(A)	
= 50116 SQ.MT.	

CARPET AREA STATEMENT

FOR SIMILAR FLOORS: PLAT 1 & 6	FOR SIMILAR FLOORS: PLAT 5 & 10
LIVING & DINING	LIVING & DINING
KITCHEN	KITCHEN
PASSAGE	PASSAGE
BEDROOM-1	BEDROOM-1
BEDROOM-2	BEDROOM-2
TWOIT-1	TWOIT-1
TWOIT-2	TWOIT-2
TOTAL CARPET AREA OF PLAT(A)	
= 50116 SQ.MT.	

CARPET AREA STATEMENT

FOR SIMILAR FLOORS: PLAT 1 & 6	FOR SIMILAR FLOORS: PLAT 5 & 10
LIVING & DINING	LIVING & DINING
KITCHEN	KITCHEN
PASSAGE	PASSAGE
BEDROOM-1	BEDROOM-1
BEDROOM-2	BEDROOM-2
TWOIT-1	TWOIT-1
TWOIT-2	TWOIT-2
TOTAL CARPET AREA OF PLAT(A)	
= 50116 SQ.MT.	

CARPET AREA STATEMENT

FOR SIMILAR FLOORS: PLAT 1 & 6	FOR SIMILAR FLOORS: PLAT 5 & 10
LIVING & DINING	LIVING & DINING
KITCHEN	KITCHEN
PASSAGE	PASSAGE
BEDROOM-1	BEDROOM-1
BEDROOM-2	BEDROOM-2
TWOIT-1	TWOIT-1
TWOIT-2	TWOIT-2
TOTAL CARPET AREA OF PLAT(A)	
= 50116 SQ.MT.	

CARPET AREA STATEMENT

FOR SIMILAR FLOORS: PLAT 1 & 6	FOR SIMILAR FLOORS: PLAT 5 & 10
LIVING & DINING	LIVING & DINING
KITCHEN	KITCHEN
PASSAGE	PASSAGE
BEDROOM-1	BEDROOM-1
BEDROOM-2	BEDROOM-2
TWOIT-1	TWOIT-1
TWOIT-2	TWOIT-2
TOTAL CARPET AREA OF PLAT(A)	
= 50116 SQ.MT.	

CARPET AREA STATEMENT

FOR SIMILAR FLOORS: PLAT 1 & 6	FOR SIMILAR FLOORS: PLAT 5 & 10
LIVING & DINING	LIVING & DINING
KITCHEN	KITCHEN
PASSAGE	PASSAGE
BEDROOM-1	BEDROOM-1
BEDROOM-2	BEDROOM-2
TWOIT-1	TWOIT-1
TWOIT-2	TWOIT-2
TOTAL CARPET AREA OF PLAT(A)	
= 50116 SQ.MT.	

CARPET AREA STATEMENT

FOR SIMILAR FLOORS: PLAT 1 & 6	FOR SIMILAR FLOORS: PLAT 5 & 10
LIVING & DINING	LIVING & DINING
KITCHEN	KITCHEN
PASSAGE	PASSAGE
BEDROOM-1	BEDROOM-1
BEDROOM-2	BEDROOM-2
TWOIT-1	TWOIT-1
TWOIT-2	TWOIT-2
TOTAL CARPET AREA OF PLAT(A)	
= 50116 SQ.MT.	

CARPET AREA STATEMENT

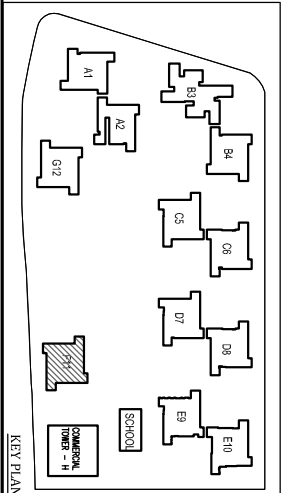
FOR SIMILAR FLOORS: PLAT 1 & 6	FOR SIMILAR FLOORS: PLAT 5 & 10
LIVING & DINING	LIVING & DINING
KITCHEN	KITCHEN
PASSAGE	PASSAGE
BEDROOM-1	BEDROOM-1
BEDROOM-2	BEDROOM-2
TWOIT-1	TWOIT-1
TWOIT-2	TWOIT-2
TOTAL CARPET AREA OF PLAT(A)	
= 50116 SQ.MT.	

CARPET AREA STATEMENT

FOR SIMILAR FLOORS: PLAT 1 & 6	FOR SIMILAR FLOORS: PLAT 5 & 10
LIVING & DINING	LIVING & DINING
KITCHEN	KITCHEN
PASSAGE	PASSAGE
BEDROOM-1	BEDROOM-1
BEDROOM-2	BEDROOM-2
TWOIT-1	TWOIT-1
TWOIT-2	TWOIT-2
TOTAL CARPET AREA OF PLAT(A)	
= 50116 SQ.MT.	

CARPET AREA STATEMENT

FOR SIMILAR FLOORS: PLAT 1 & 6	FOR SIMILAR FLOORS: PLAT 5 & 10
LIVING & DINING	LIVING & DINING
KITCHEN	KITCHEN
PASSAGE	PASSAGE
BEDROOM-1	BEDROOM-1
BEDROOM-2	BEDROOM-2
TWOIT-1	TWOIT-1
TWOIT-2	TWOIT-2
TOTAL CARPET AREA OF PLAT(A)	
= 50116 SQ.MT.	



ABBREVIATION LEGEND

- E.T. - ELEVATION TREATMENT
- BAL./BALC. - ENCLOSED BALCONY
- F.B./F.BED - FLOORED BED
- ENT. LOBBY/ENTR. - ENTRANCE LOBBY
- S.T./S. TOILET - SERVANT'S TOILET
- RM. - ROOM
- M.T.OILET - MASTER TOILET
- M.BEDROOM - MASTER BEDROOM
- TOILET - TOILET
- F.R.D. - FIRE RESISTANT DOOR
- G.C. - GARBERG CHUTE
- P.DUCT - PRESSURIZED DUCT
- E.DUCT - EXTERNAL DUCT
- H/W/R - HOSE REEL / WATER REEL
- UPS - UN INTERRUPTED POWER SUPPLY
- M.V. - MECHANICAL VENTILATION

PLAN AS PER APPROVED CC DATED 12.02.2014

PROPOSED RESIDENTIAL & COMMERCIAL BUILDING ON PLOT BEARING NO.10/2006 - C IN WADALA TRUCK TERMINAL (W.T.T) MUMBAI, MUMBAI

JOB NO.	DWG NO.	REVISIONS	DATE	SCALE	DESCRIPTION
-	104/139	-	-	1 : 100	-

CHECKED BY: -

DRAWN BY: -

NORTH

NAME OF THE OWNER
M/S BELLISSIMO CROWN BUILDSMART PVT. LTD.

NAME ADDRESS AND SIGNATURE OF ARCHITECT
B-106, Nataraj Building, Mulund
Cooperation Link Road Mulund (W),
Mumbai : 400 080