

F.B AREA CALCULATION FOR 3RD, 5TH & 7TH FLOOR

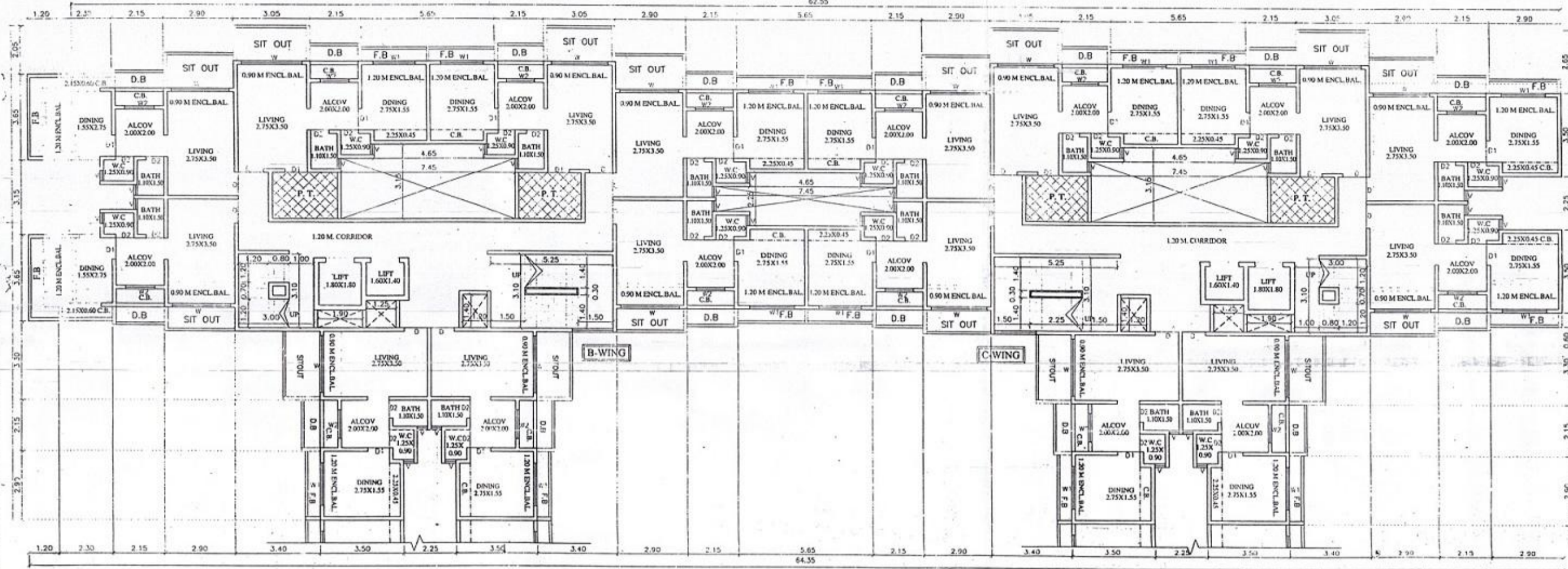
1	5.65 X 0.60 = 3.39 SQ.M.
2	5.65 X 0.60 = 3.39 SQ.M.
3	5.65 X 0.60 = 3.39 SQ.M.
4	5.65 X 0.60 = 3.39 SQ.M.
5	0.60 X 2.90 = 1.74 SQ.M.
6	0.60 X 2.90 = 1.74 SQ.M.
7	0.60 X 2.90 = 1.74 SQ.M.
TOTAL	= 29.10 SQ.M.

P.TERRACE AREA CALCULATION FOR 3RD, 5TH & 7TH FLOOR

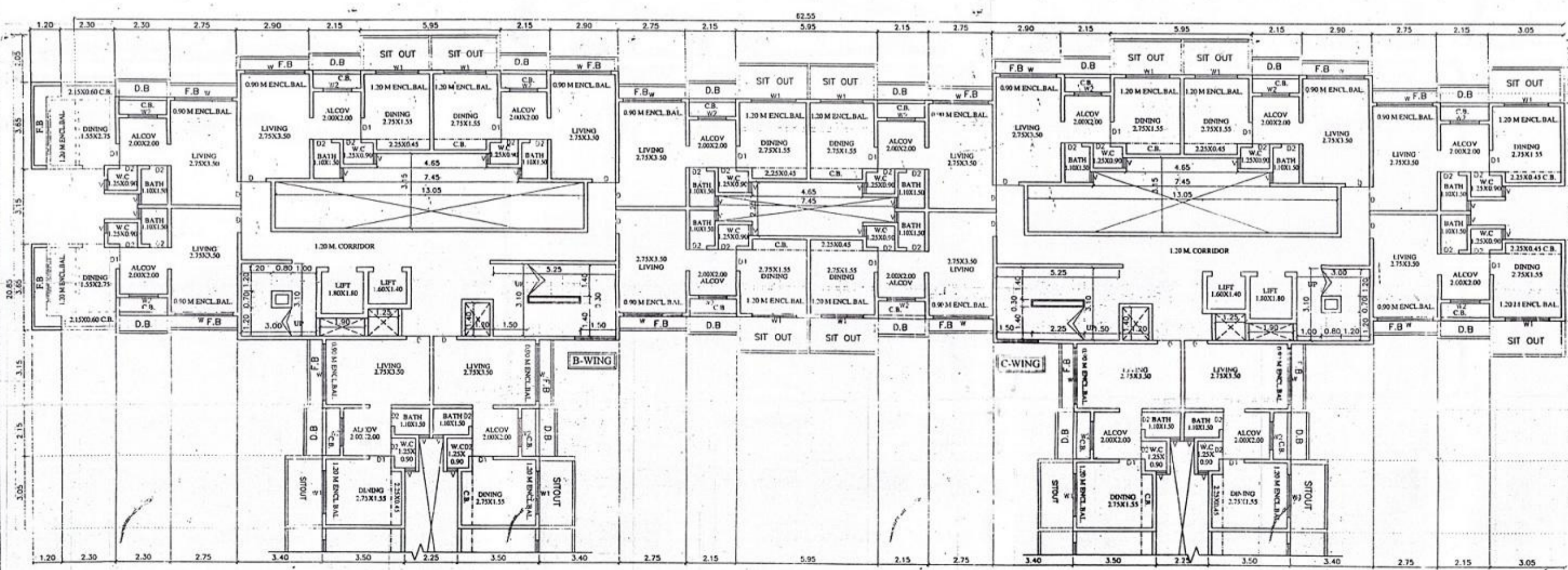
1	2.80 X 1.95 = 5.46 SQ.M.
2	2.80 X 1.95 = 5.46 SQ.M.
3	2.80 X 1.95 = 5.46 SQ.M.
4	2.80 X 1.95 = 5.46 SQ.M.
TOTAL	= 21.84 SQ.M.

FIRE ESC. AREA CALCULATION FOR 2ND, 4TH & 6TH FLOOR

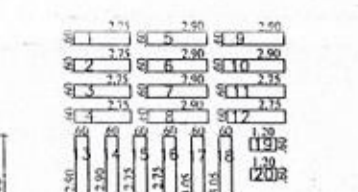
1	3.00 X 2.50 X 2 = 15.00 SQ.M.
2	2.65 X 0.50 X 2 = 2.66 SQ.M.
3	2.80 X 0.40 X 2 = 2.24 SQ.M.
4	0.50 X 0.75 X 2 = 0.76 SQ.M.
TOTAL	= 20.66 SQ.M.



THIRD, FIFTH & SEVENTH FLOOR PLAN
SCALE 1:100

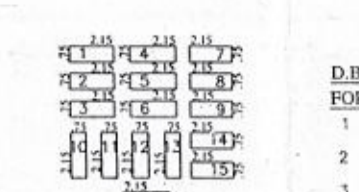


SECOND FLOOR PLAN
SCALE 1:100



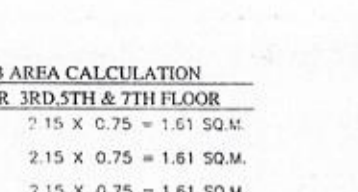
F.B AREA CALCULATION FOR SECOND FLOOR

1	2.75 X 0.60 = 1.65 SQ.M.
2	2.75 X 0.60 = 1.65 SQ.M.
3	2.75 X 0.60 = 1.65 SQ.M.
4	2.75 X 0.60 = 1.65 SQ.M.
5	2.90 X 0.60 = 1.74 SQ.M.
6	2.90 X 0.60 = 1.74 SQ.M.
7	2.90 X 0.60 = 1.74 SQ.M.
8	2.90 X 0.60 = 1.74 SQ.M.
9	2.90 X 0.60 = 1.74 SQ.M.
10	2.90 X 0.60 = 1.74 SQ.M.
TOTAL	= 32.22 SQ.M.



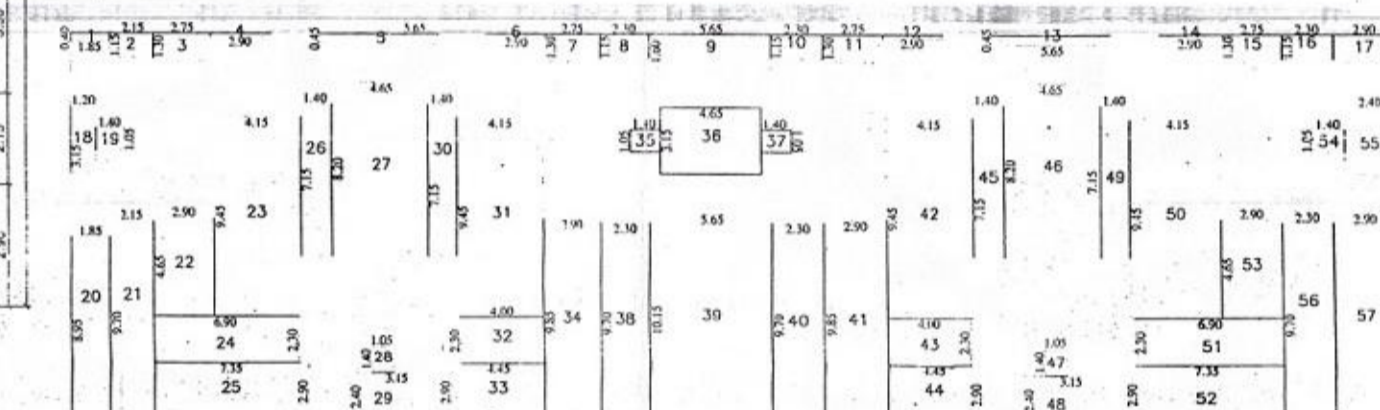
D.B AREA CALCULATION FOR 3RD, 5TH & 7TH FLOOR

1	2.15 X 0.75 = 1.61 SQ.M.
2	2.15 X 0.75 = 1.61 SQ.M.
3	2.15 X 0.75 = 1.61 SQ.M.
4	2.15 X 0.75 = 1.61 SQ.M.
5	2.15 X 0.75 = 1.61 SQ.M.
6	2.15 X 0.75 = 1.61 SQ.M.
7	2.15 X 0.75 = 1.61 SQ.M.
8	2.15 X 0.75 = 1.61 SQ.M.
9	2.15 X 0.75 = 1.61 SQ.M.
10	2.15 X 0.75 = 1.61 SQ.M.
11	2.75 X 0.60 = 1.65 SQ.M.
12	2.75 X 0.60 = 1.65 SQ.M.
13	0.60 X 2.90 = 1.74 SQ.M.
14	0.60 X 2.90 = 1.74 SQ.M.
15	0.60 X 2.90 = 1.74 SQ.M.
16	0.60 X 2.90 = 1.74 SQ.M.
17	0.60 X 3.05 = 1.83 SQ.M.
18	0.60 X 3.05 = 1.83 SQ.M.
19	1.20 X 0.60 = 0.72 SQ.M.
20	1.20 X 0.60 = 0.72 SQ.M.
TOTAL	= 25.76 SQ.M.



SITOUT AREA CALCULATION FOR SECOND FLOOR

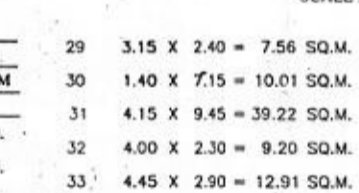
1	5.95 X 1.50 = 8.93 SQ.M.
2	5.95 X 1.50 = 8.93 SQ.M.
3	5.95 X 1.50 = 8.93 SQ.M.
4	5.95 X 1.50 = 8.93 SQ.M.
5	1.50 X 3.05 = 4.58 SQ.M.
6	1.50 X 3.05 = 4.58 SQ.M.
7	1.50 X 3.05 = 4.58 SQ.M.
8	1.50 X 3.05 = 4.58 SQ.M.
9	3.05 X 1.50 = 4.58 SQ.M.
10	3.05 X 1.50 = 4.58 SQ.M.
TOTAL	= 63.20 SQ.M.



BUILT-UP AREA DIAGRAM FOR 2ND TO 7TH FLOOR
SCALE 1:200

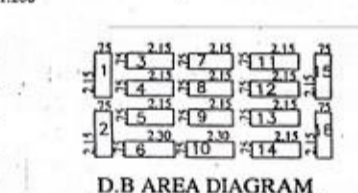
BUILT-UP AREA CALCULATION FOR 2ND TO 7TH FLOOR
RECT A = 62.55 X 18.60 = 1163.43 SQ.M DEDUCTION

1	1.85 X 0.40 = 0.74 SQ.M.
2	2.15 X 1.15 = 2.47 SQ.M.
3	2.75 X 1.30 = 3.58 SQ.M.
4	2.90 X 0.15 = 0.44 SQ.M.
5	5.65 X 0.45 = 2.54 SQ.M.
6	2.90 X 0.15 = 0.44 SQ.M.
7	2.75 X 1.30 = 3.58 SQ.M.
8	2.30 X 1.15 = 2.65 SQ.M.
9	5.65 X 1.60 = 9.04 SQ.M.
10	2.30 X 1.15 = 2.65 SQ.M.
11	2.75 X 1.30 = 3.58 SQ.M.
12	2.90 X 0.15 = 0.44 SQ.M.
13	5.65 X 0.45 = 2.54 SQ.M.
14	2.90 X 0.15 = 0.44 SQ.M.
15	2.75 X 1.30 = 3.58 SQ.M.
16	2.30 X 1.15 = 2.65 SQ.M.
17	2.90 X 1.60 = 4.64 SQ.M.
18	1.20 X 3.15 = 3.78 SQ.M.
19	1.40 X 1.05 = 1.47 SQ.M.
20	1.85 X 8.95 = 16.56 SQ.M.
21	2.15 X 9.70 = 20.86 SQ.M.
22	2.90 X 4.65 = 13.49 SQ.M.
23	4.15 X 9.45 = 39.22 SQ.M.
24	6.90 X 2.30 = 15.87 SQ.M.
25	7.35 X 2.90 = 21.32 SQ.M.
26	1.40 X 7.15 = 10.01 SQ.M.
27	4.65 X 8.20 = 38.13 SQ.M.
28	1.05 X 1.40 = 1.47 SQ.M.
TOTAL	= 762.97 SQ.M.
NET AREA (1163.43 - 762.97)	= 400.46 SQ.M.



D.B AREA CALCULATION FOR 2ND, 4TH & 6TH FLOOR

1	0.75 X 2.15 = 1.61 SQ.M.
2	0.75 X 2.15 = 1.61 SQ.M.
3	2.15 X 0.75 = 1.61 SQ.M.
4	2.15 X 0.75 = 1.61 SQ.M.
5	2.15 X 0.75 = 1.61 SQ.M.
6	2.30 X 0.75 = 1.73 SQ.M.
7	2.15 X 0.75 = 1.61 SQ.M.
8	2.15 X 0.75 = 1.61 SQ.M.
9	2.15 X 0.75 = 1.61 SQ.M.
10	2.30 X 0.75 = 1.73 SQ.M.
11	2.15 X 0.75 = 1.61 SQ.M.
12	2.15 X 0.75 = 1.61 SQ.M.
13	2.15 X 0.75 = 1.61 SQ.M.
14	2.15 X 0.75 = 1.61 SQ.M.
15	0.75 X 2.15 = 1.61 SQ.M.
16	0.75 X 2.15 = 1.61 SQ.M.
TOTAL	= 26.00 SQ.M.



C.B AREA CALCULATION FOR 2ND TO 7TH FLOOR

1	2.20 X 0.75 = 1.65 SQ.M.
2	2.20 X 0.75 = 1.65 SQ.M.
3	2.20 X 0.75 = 1.65 SQ.M.
4	2.20 X 0.75 = 1.65 SQ.M.
5	2.20 X 0.75 = 1.65 SQ.M.
6	2.20 X 0.75 = 1.65 SQ.M.
7	2.20 X 0.75 = 1.65 SQ.M.
8	2.20 X 0.75 = 1.65 SQ.M.
9	2.20 X 0.75 = 1.65 SQ.M.
10	2.20 X 0.75 = 1.65 SQ.M.
11	2.20 X 0.75 = 1.65 SQ.M.
12	2.20 X 0.75 = 1.65 SQ.M.
13	2.20 X 0.75 = 1.65 SQ.M.
14	0.75 X 2.30 = 1.73 SQ.M.
15	0.75 X 2.30 = 1.73 SQ.M.
16	2.30 X 0.60 = 1.38 SQ.M.
17	2.30 X 0.60 = 1.38 SQ.M.
18	2.30 X 0.60 = 1.38 SQ.M.
19	2.40 X 0.45 = 1.08 SQ.M.
20	2.40 X 0.45 = 1.08 SQ.M.
21	4.65 X 0.45 = 2.09 SQ.M.
22	4.65 X 0.45 = 2.09 SQ.M.
23	4.65 X 0.45 = 2.09 SQ.M.
24	4.65 X 0.45 = 2.09 SQ.M.
25	0.45 X 2.40 = 1.08 SQ.M.
26	0.45 X 2.40 = 1.08 SQ.M.
27	0.45 X 2.40 = 1.08 SQ.M.
28	0.45 X 2.40 = 1.08 SQ.M.
TOTAL	= 45.04 SQ.M.

STAMP OF APPROVALS OF PLAN

VP NO- 0711
PHASE - I
SECTOR NO. - 1
BLDG NO. I
WING- B & C
SHEET NO- 2/3

The amended plan duly approved herewith Supersedes all the earlier approved plans.

THIS PLAN SHALL NOT BE CONSIDERED AS A PROOF OF OWNERSHIP, FOR ANY DISPUTES IN ANY COURT OF LAW.

Approved as amended in Subject to the Conditions mentioned in this Office Letter No. VVCC/CP/PLANNING/2012-13 VP-0711 (02/09/2012) DATE: 22/02/2012

Deputy Director, Town Planning
Municipal Corporation
Vasai (E)

TRUE COPY

[Signature]

SANAT MEHTA & ASSOCIATES
Civil Engineers & Architectural Planners
207, PARK VIEW, STATION ROAD,
NALLASOPARA (W), TEL: 022-25520181

DOORS & WINDOWS SCHEDULE

TYPE OF APERTURE	DESIGNATION	SIZE OF APERTURE	AREA INCLUSIVE OF FRAMES	AREA OF FLY GLASS IF ANY
T.W FLUSH DOOR	D	1.00 X 2.10	2.10	NIL
T.W FLUSH DOOR	D1	0.90 X 2.10	1.89	NIL
T.W PANNELLED DOOR	D2	0.75 X 1.80	1.35	NIL
AL.M SLIDING WINDOW	W	2.40 X 1.50	3.60	0.90
AL.M SLIDING WINDOW	W1	1.80 X 1.50	2.70	0.68
AL.M SLIDING WINDOW	W2	1.20 X 1.20	1.44	0.48
T.W LOUVERED WINDOW	V	0.60 X 0.90	0.54	0.54
ROLLING SHUTTER	RS	2.40 X 2.40	5.76	NIL
ROLLING SHUTTER	RS1	1.80 X 2.40	4.32	NIL

LIGHT & VENTILATION STATEMENT

ROOM TYPE	SIZE OF ROOM	CARPET AREA	MINIMUM VENT. REQUIRED [1/6]	APERTURE OF ROOM ARE.	TYPE	AREA
LIVING	3.50 X 2.75	9.63	1.61	W	3.60	
ALCOV	2.00 X 2.00	4.00	0.67	W1	2.70	
DINNING	2.75 X 1.55	4.26	0.71	W2	1.44	
BATH	1.10 X 1.50	1.65	0.28	V	0.54	
W.C	1.25 X 0.90	1.13	0.19	V	0.54	

DESCRIPTION OF PROPOSAL & PROPERTY

PROPOSED GROUP HOUSING SCHEME AT VILLAGE : NILEMERE, TALUKA : VASAI, DIST. THANE.

NAME OF APPLICANT
ANIL R. GUPTA
(P.A. HOLDER)

JOB NO. V/1624/2012
DATE 30/11/2012
SCALE AS SHOWN
DRAWN BY SHUBHANGI TARGE
CHECKED [Signature]

DRG. NO. 1624/AMD/P1/S1/B1
NORTH

SIGNATURE OF APPLICANT [Signature]

LICENCED ENGINEER
Sanat mehta & associates
Civil Engineers & Architectural Planners
207, PARK VIEW, STATION ROAD, NALLASOPARA (W), DIST. THANE.
EMAIL: sanat_mehta@yahoo.com
PHONE NO (022) 25520181

SANAT MEHTA
Licenced Engineer