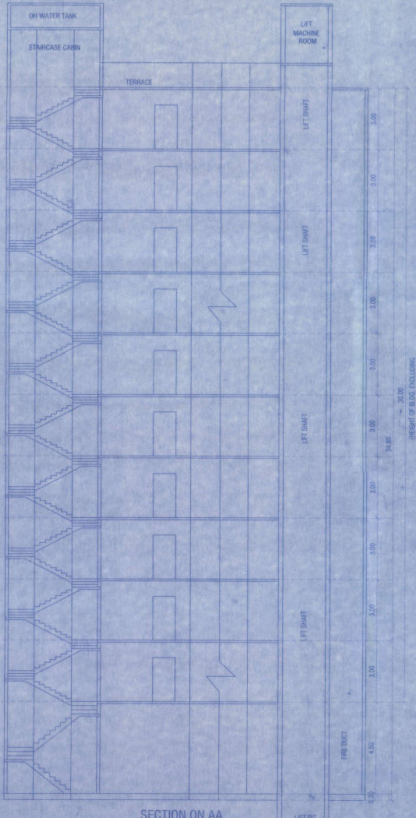
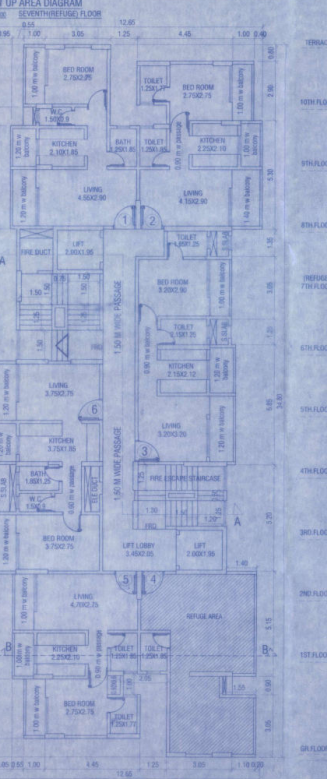
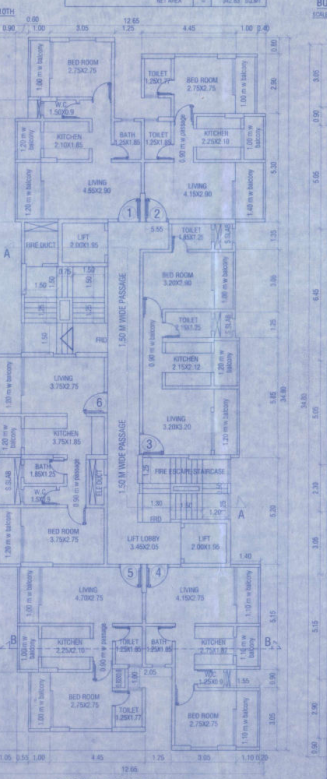
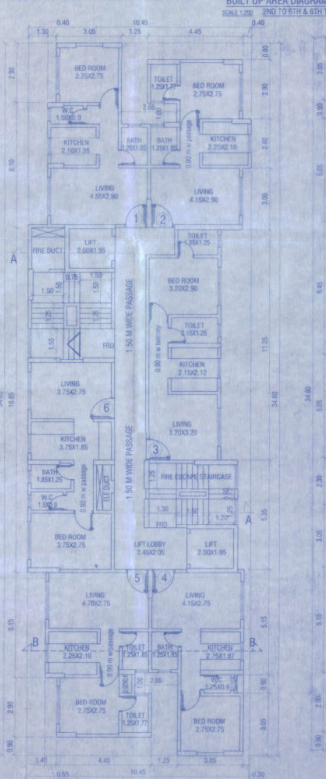
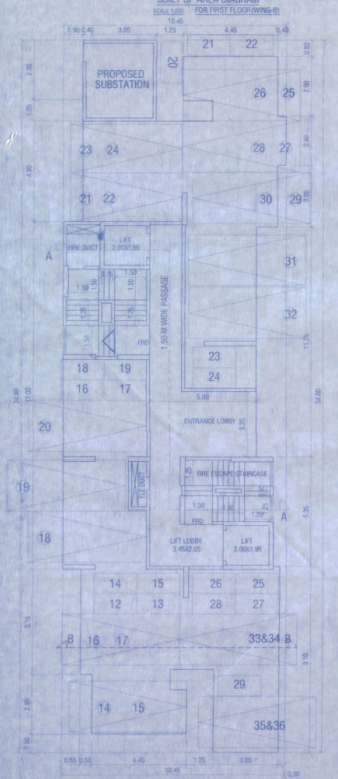


ROOM NO.	AREA (SQ. MT.)
11	0.88
12	2.80
13	0.30
14	0.70
15	1.20
16	1.20
17	3.40
18	3.40
19	3.40
20	3.40
21	3.40
22	3.40
23	3.40
24	3.40
25	3.40
26	3.40
27	3.40
28	3.40
29	3.40
30	3.40
31	3.40
32	3.40
33	3.40
34	3.40
35	3.40
36	3.40
37	3.40
38	3.40
39	3.40
40	3.40
41	3.40
42	3.40
43	3.40
44	3.40
45	3.40
46	3.40
47	3.40
48	3.40
49	3.40
50	3.40
51	3.40
52	3.40
53	3.40
54	3.40
55	3.40
56	3.40
57	3.40
58	3.40
59	3.40
60	3.40
61	3.40
62	3.40
63	3.40
64	3.40
65	3.40
66	3.40
67	3.40
68	3.40
69	3.40
70	3.40
71	3.40
72	3.40
73	3.40
74	3.40
75	3.40
76	3.40
77	3.40
78	3.40
79	3.40
80	3.40
81	3.40
82	3.40
83	3.40
84	3.40
85	3.40
86	3.40
87	3.40
88	3.40
89	3.40
90	3.40
91	3.40
92	3.40
93	3.40
94	3.40
95	3.40
96	3.40
97	3.40
98	3.40
99	3.40
100	3.40
TOTAL	340.00

FLOOR	B.U.AREA	SQ. MT.
GR FLOOR	18.02	SQ. MT.
1ST FLOOR	288.21	SQ. MT.
2ND FLOOR	342.83	SQ. MT.
3RD FLOOR	342.83	SQ. MT.
4TH FLOOR	342.83	SQ. MT.
5TH FLOOR	342.83	SQ. MT.
6TH FLOOR	342.83	SQ. MT.
7TH FLOOR	300.97	SQ. MT.
8TH FLOOR	342.83	SQ. MT.
9TH FLOOR	342.83	SQ. MT.
10TH FLOOR	342.83	SQ. MT.
TOTAL	3349.64	SQ. MT.



PROFORMA-2

PROPOSED RESIDENTIAL SUB-COMPOUND BUILDING PROJECT
 PLOT NO. 24/10/19, 24/10/20, 24/10/21, 24/10/22, 24/10/23, 24/10/24, 24/10/25, 24/10/26, 24/10/27, 24/10/28, 24/10/29, 24/10/30, 24/10/31, 24/10/32, 24/10/33, 24/10/34, 24/10/35, 24/10/36, 24/10/37, 24/10/38, 24/10/39, 24/10/40, 24/10/41, 24/10/42, 24/10/43, 24/10/44, 24/10/45, 24/10/46, 24/10/47, 24/10/48, 24/10/49, 24/10/50, 24/10/51, 24/10/52, 24/10/53, 24/10/54, 24/10/55, 24/10/56, 24/10/57, 24/10/58, 24/10/59, 24/10/60, 24/10/61, 24/10/62, 24/10/63, 24/10/64, 24/10/65, 24/10/66, 24/10/67, 24/10/68, 24/10/69, 24/10/70, 24/10/71, 24/10/72, 24/10/73, 24/10/74, 24/10/75, 24/10/76, 24/10/77, 24/10/78, 24/10/79, 24/10/80, 24/10/81, 24/10/82, 24/10/83, 24/10/84, 24/10/85, 24/10/86, 24/10/87, 24/10/88, 24/10/89, 24/10/90, 24/10/91, 24/10/92, 24/10/93, 24/10/94, 24/10/95, 24/10/96, 24/10/97, 24/10/98, 24/10/99, 24/10/100

SHEET NO. 3/3

WING-B

DATE OF APPROVAL: 14/03/2023

APPROVED BY: *[Signature]*

FOR ANAPURNA REALTORS

PARTNER

NAME OF ARCHITECT: Mario E. Correa

ARCHITECT & PLANNERS: ANAPURNA REALTORS

ADDRESS: ANAPURNA REALTORS, 100/101, 102/103, 104/105, 106/107, 108/109, 110/111, 112/113, 114/115, 116/117, 118/119, 120/121, 122/123, 124/125, 126/127, 128/129, 130/131, 132/133, 134/135, 136/137, 138/139, 140/141, 142/143, 144/145, 146/147, 148/149, 150/151, 152/153, 154/155, 156/157, 158/159, 160/161, 162/163, 164/165, 166/167, 168/169, 170/171, 172/173, 174/175, 176/177, 178/179, 180/181, 182/183, 184/185, 186/187, 188/189, 190/191, 192/193, 194/195, 196/197, 198/199, 200/201, 202/203, 204/205, 206/207, 208/209, 210/211, 212/213, 214/215, 216/217, 218/219, 220/221, 222/223, 224/225, 226/227, 228/229, 230/231, 232/233, 234/235, 236/237, 238/239, 240/241, 242/243, 244/245, 246/247, 248/249, 250/251, 252/253, 254/255, 256/257, 258/259, 260/261, 262/263, 264/265, 266/267, 268/269, 270/271, 272/273, 274/275, 276/277, 278/279, 280/281, 282/283, 284/285, 286/287, 288/289, 290/291, 292/293, 294/295, 296/297, 298/299, 300/301, 302/303, 304/305, 306/307, 308/309, 310/311, 312/313, 314/315, 316/317, 318/319, 320/321, 322/323, 324/325, 326/327, 328/329, 330/331, 332/333, 334/335, 336/337, 338/339, 340/341, 342/343, 344/345, 346/347, 348/349, 350/351, 352/353, 354/355, 356/357, 358/359, 360/361, 362/363, 364/365, 366/367, 368/369, 370/371, 372/373, 374/375, 376/377, 378/379, 380/381, 382/383, 384/385, 386/387, 388/389, 390/391, 392/393, 394/395, 396/397, 398/399, 400/401, 402/403, 404/405, 406/407, 408/409, 410/411, 412/413, 414/415, 416/417, 418/419, 420/421, 422/423, 424/425, 426/427, 428/429, 430/431, 432/433, 434/435, 436/437, 438/439, 440/441, 442/443, 444/445, 446/447, 448/449, 450/451, 452/453, 454/455, 456/457, 458/459, 460/461, 462/463, 464/465, 466/467, 468/469, 470/471, 472/473, 474/475, 476/477, 478/479, 480