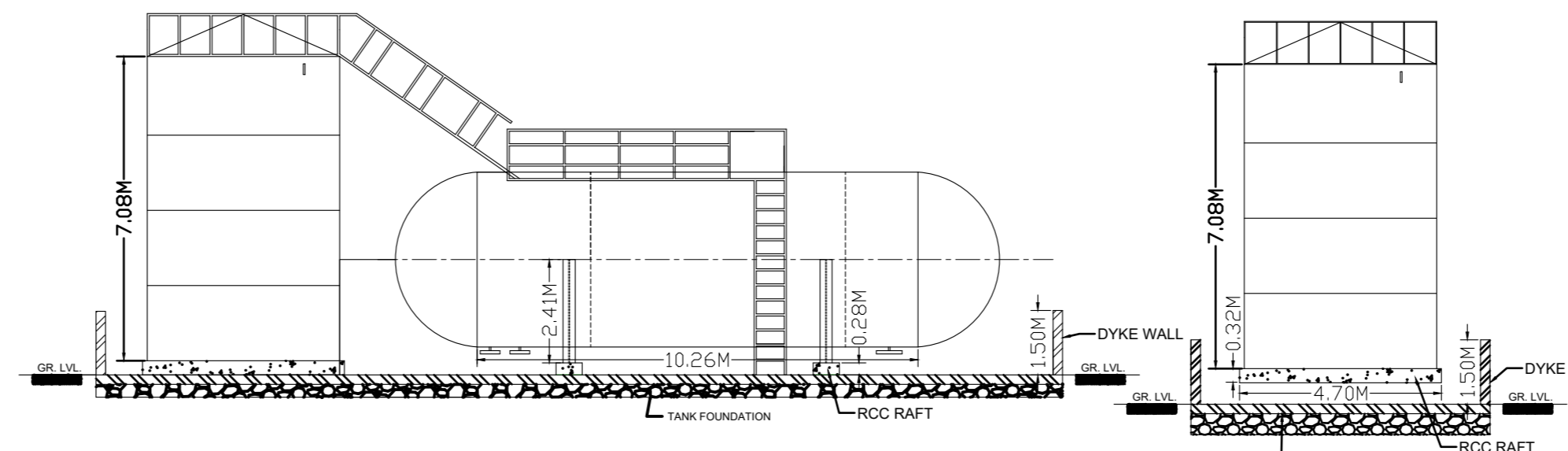
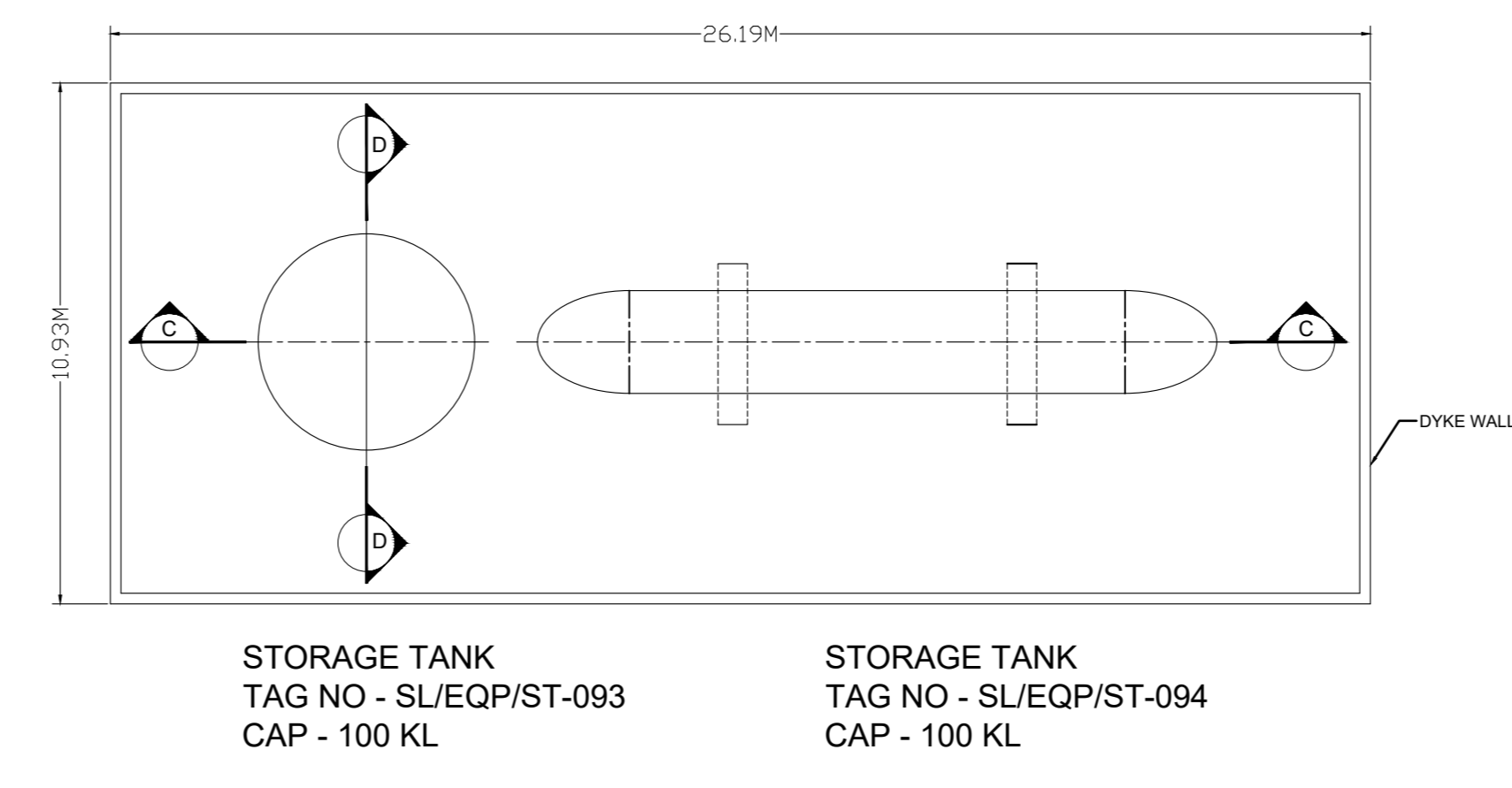


EQUIPMENT LIST OF PRODUCTION PLANT					
SR. NO	TAG NO.	DESCRIPTION	MOC	CAP. / SIZE	LOCATION IN FACTORY (MENTIONED FLOOR)
1	SL/EQ/CFG-077	CENTRIFUGE	SS - 316	36"	GR. FLOOR
2	SL/EQ/TD-078	TRAY DRYER	SS - 316	48 TRAY DRYER	GR. FLOOR
3	SL/EQ/RVD-079	ROTARY VACUUM DRYER	SS - 316	200 LTR	GR. FLOOR
4	SL/EQ/ST-024	STORAGE TANK FOR CRUDE DMF.	SS - 316	12000 LTR	GR. FLOOR
5	SL/EQ/RB-025	STORAGE TANK FOR REPROCESSED DMF.	SS - 316	12000 LTR	GR. FLOOR
6	SL/EQ/RB-001	JACKETED REBOILER	SS - 316	4000 LTR	1st FLOOR
7	SL/EQ/COL-004	PACKED COLUMN	SS - 316	12 MTR	1st TO 5th FLOOR
8	SL/EQ/RB-080	PRODUCT COOLER	SS - 316	----	1st FLOOR
9	SL/EQ/RB-009	RECEIVER	SS - 316	500 LTR	1st FLOOR
10	SL/EQ/RB-015	RECEIVER	SS - 316	400 LTR	1st FLOOR
11	SL/EQ/RB-002	JACKETED REBOILER	SS - 316	4000 LTR	1st FLOOR
12	SL/EQ/COL-005	PACKED COLUMN	SS - 316	12 MTR	1st TO 5th FLOOR
13	SL/EQ/COL-006	PACKED COLUMN	SS - 316	12 MTR	1st TO 5th FLOOR
14	SL/EQ/RB-003	JACKETED REBOILER	SS - 316	4000 LTR	1st FLOOR
15	SL/EQ/RE-085	REACTOR	SS - 316	2000 LTR	1st FLOOR
16	SL/EQ/RE-086	REACTOR	SS - 316	4000 LTR	1st FLOOR
17	SL/EQ/CR-020	CONDENSOR	SS - 316	15 M2	4th FLOOR
18	SL/EQ/CR-019	CONDENSOR	SS - 316	25 M2	4th FLOOR
19	SL/EQ/CR-021	CONDENSOR	SS - 316	25 M2	4th FLOOR
20	SL/EQ/CR-022	CONDENSOR	SS - 316	15 M2	4th FLOOR
21	SL/EQ/CR-018	CONDENSOR	SS - 316	25 M2	5th FLOOR
22	SL/EQ/CR-017	CONDENSOR	SS - 316	50 M2	5th FLOOR
23	SL/EQ/TP-032	TRANSFERRING PUMP	SS - 316	3 HP	GR. FLOOR
24	SL/EQ/TP-037	TRANSFERRING PUMP	SS - 316	2 HP	GR. FLOOR
25	SL/EQ/TP-035	TRANSFERRING PUMP	SS - 316	2 HP	GR. FLOOR
26	SL/EQ/TP-036	TRANSFERRING PUMP	SS - 316	2 HP	GR. FLOOR
27	SL/EQ/OC-001	OIL CONDENSOR	SS - 316	15 M2	GR. FLOOR
28	SL/EQ/OT-001	OIL TANK	MS	0.80M X 1.62M	GR. FLOOR
29	SL/EQ/SH-001	STEAM HEADER	MS	0.20M X 2.65M	1st FLOOR
30	SL/EQ/RB-015	RECEIVER	SS - 316	400 LTR	1st FLOOR
31	SL/EQ/VH-001	VACUUM HEADER	MS	0.40M X 1.10M	1st FLOOR
32	SL/EQ/VH-002	VACUUM HEADER	MS	0.30M X 1.20M	1st FLOOR

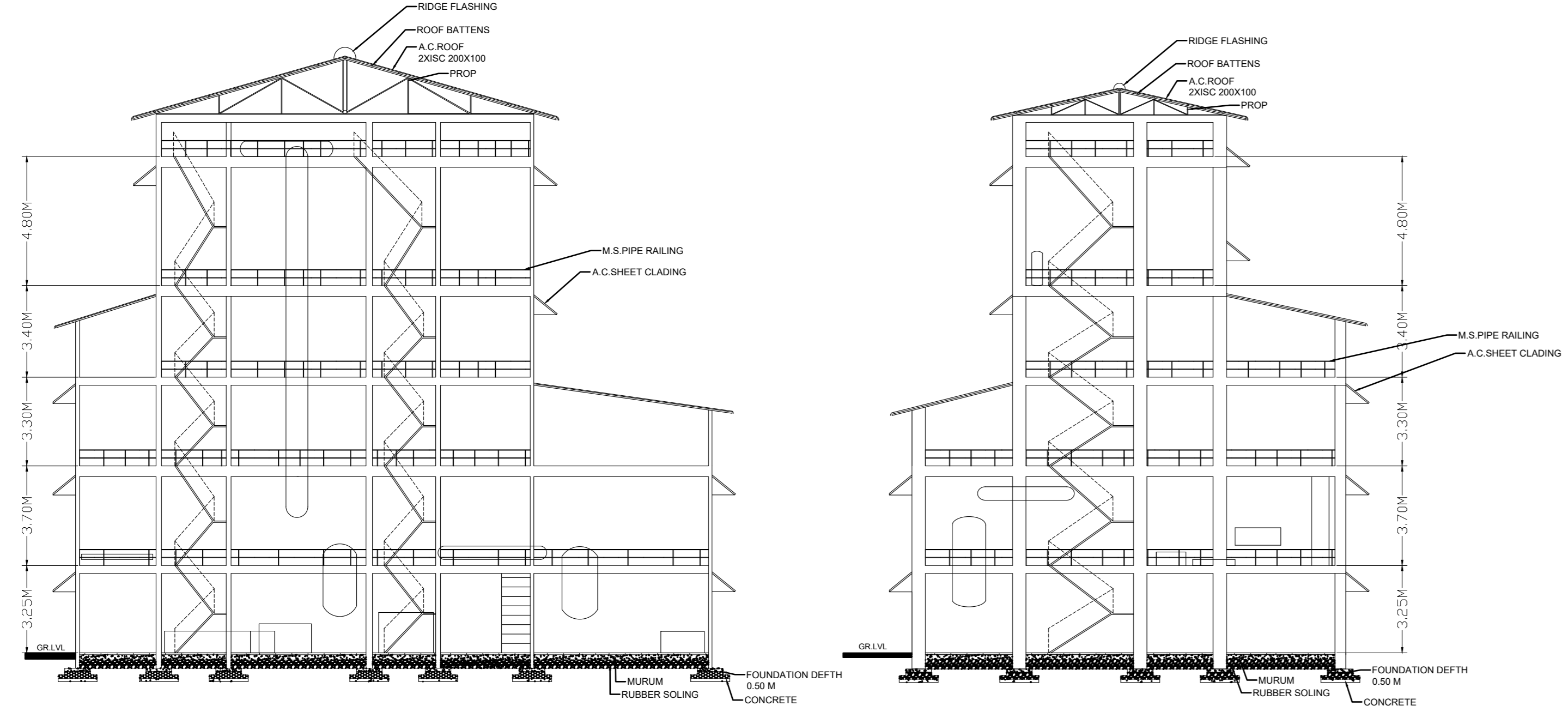


STORAGE TANK TAG NO - SL/EQ/ST-093 CAP - 100 KL
 STORAGE TANK TAG NO - SL/EQ/ST-094 CAP - 100 KL SECTION C-C SCALE 1:100
 STORAGE TANK TAG NO - SL/EQ/ST-093 CAP - 100 KL SECTION D-D SCALE 1:100

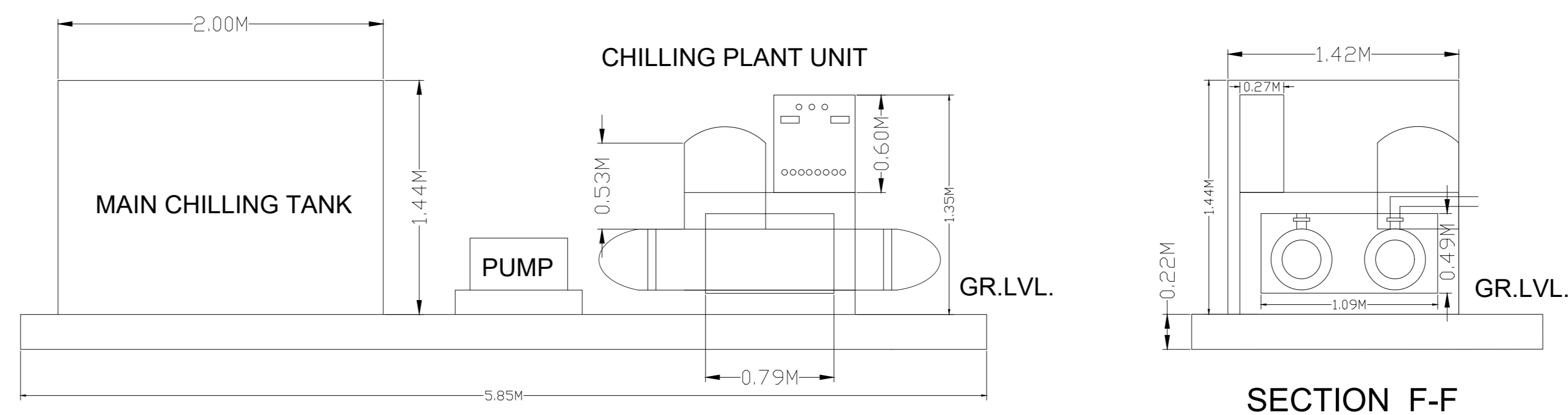
SR. NO	TAG NO	STORED CHEMICAL	SIZE	CAP	FLASH POINT	BOILING POINT	SAFETY PRECAUTIONS	MOC	USE
1	SL/EQ/ST-093	CRUDE DIMETHYL FORMAMIDE	Ø4.89M X 7.80M	100 KL	58 DEGREE CELCIUS	153 DEGREE CELCIUS	DYKE WALL VENT	MS	STORAGE OF CHEMICAL
2	SL/EQ/ST-094	CRUDE DIMETHYL FORMAMIDE	Ø4.89M X 10.26M	100 KL	58 DEGREE CELCIUS	153 DEGREE CELCIUS	DYKE WALL VENT	MS-FRP COATING	STORAGE OF CHEMICAL



STORAGE TANK TAG NO - SL/EQ/ST-093 CAP - 100 KL
 STORAGE TANK TAG NO - SL/EQ/ST-094 CAP - 100 KL
3 ABOVE GROUND TANK FARM AREA - 1
 SCALE 1:100

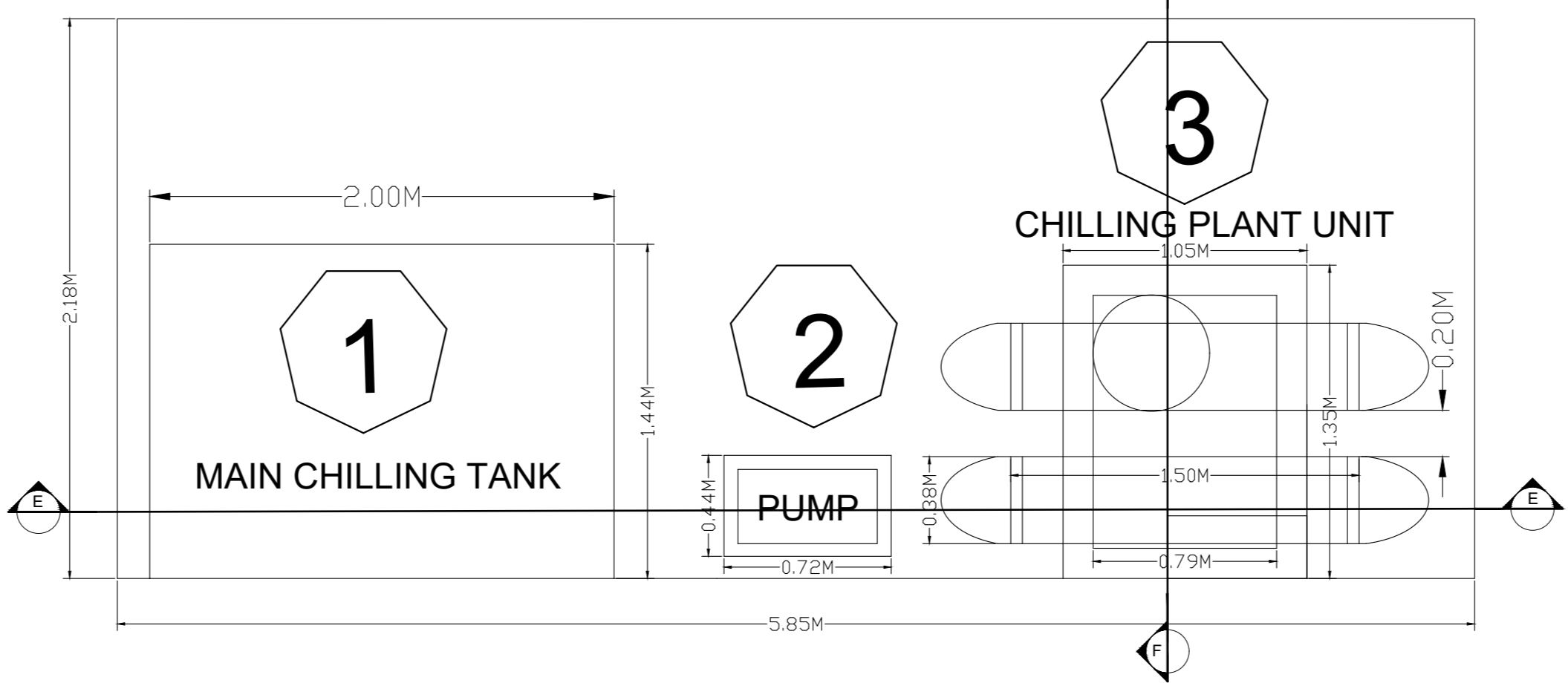


SECTION A-A SCALE 1:100
 SECTION B-B SCALE 1:100

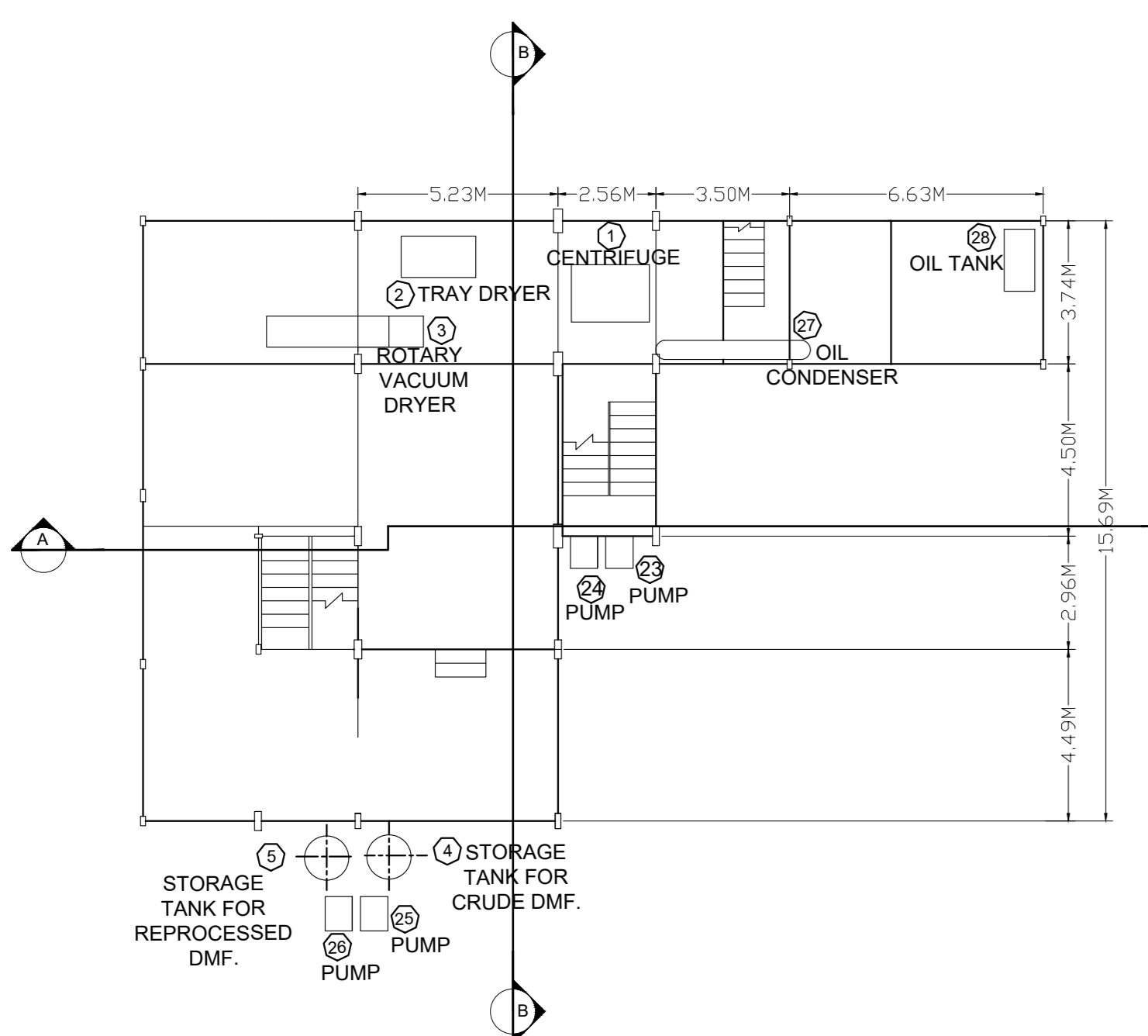


SECTION E-E SCALE 1:100
 SECTION F-F SCALE 1:100

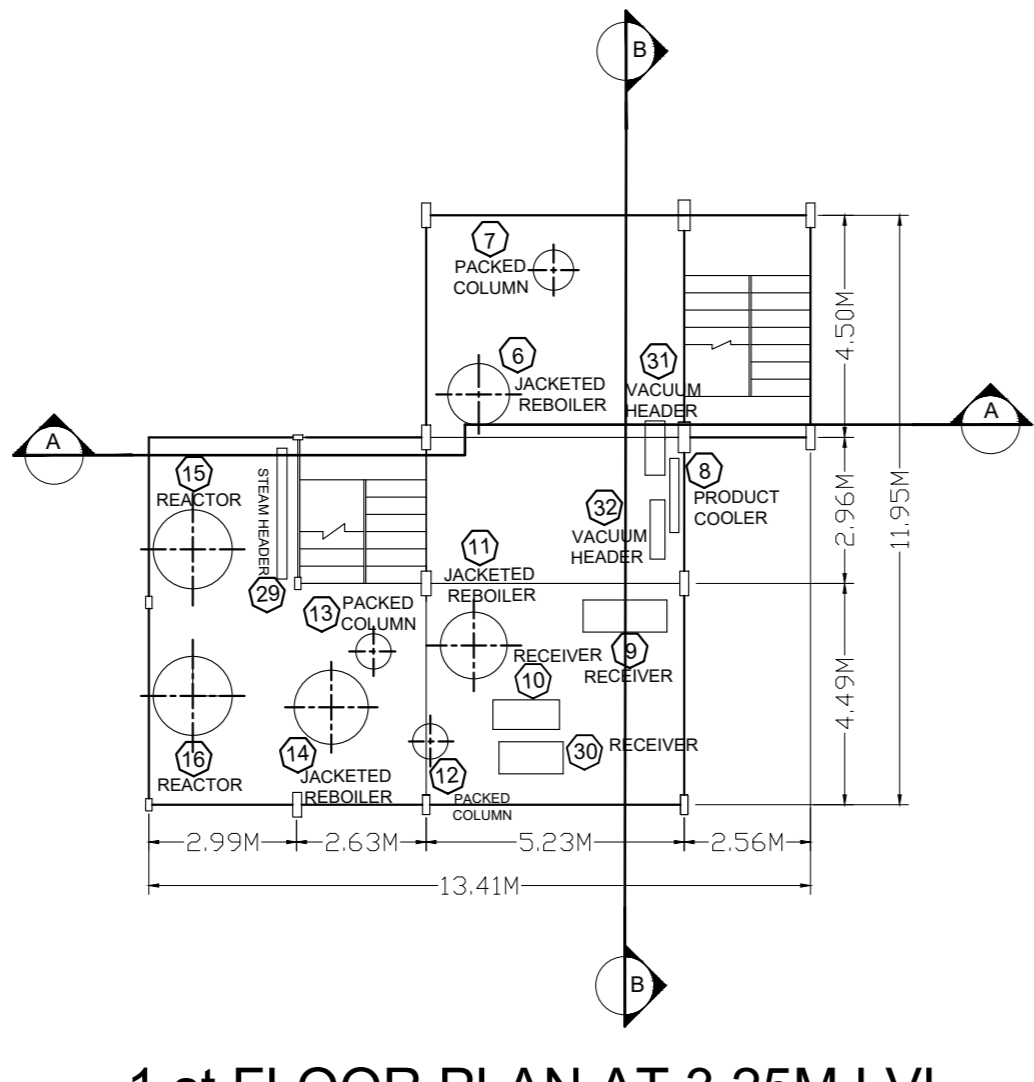
STR. NO	TAG NO.	DESCRIPTION	MOC	CAP./SIZE	LOCATION IN FACTORY (MENTIONED FLOOR)
1	SL/EQ/ST-095	MAIN CHILLING TANK	MS	5 KL	CHILLING PLANT
2	SL/EQ/CHL-067	CHILLING PLANT UNIT	MS	10 TR	CHILLING PLANT
3	SL/EQ/TP-038	PUMP	SS-316	3 HP	CHILLING PLANT



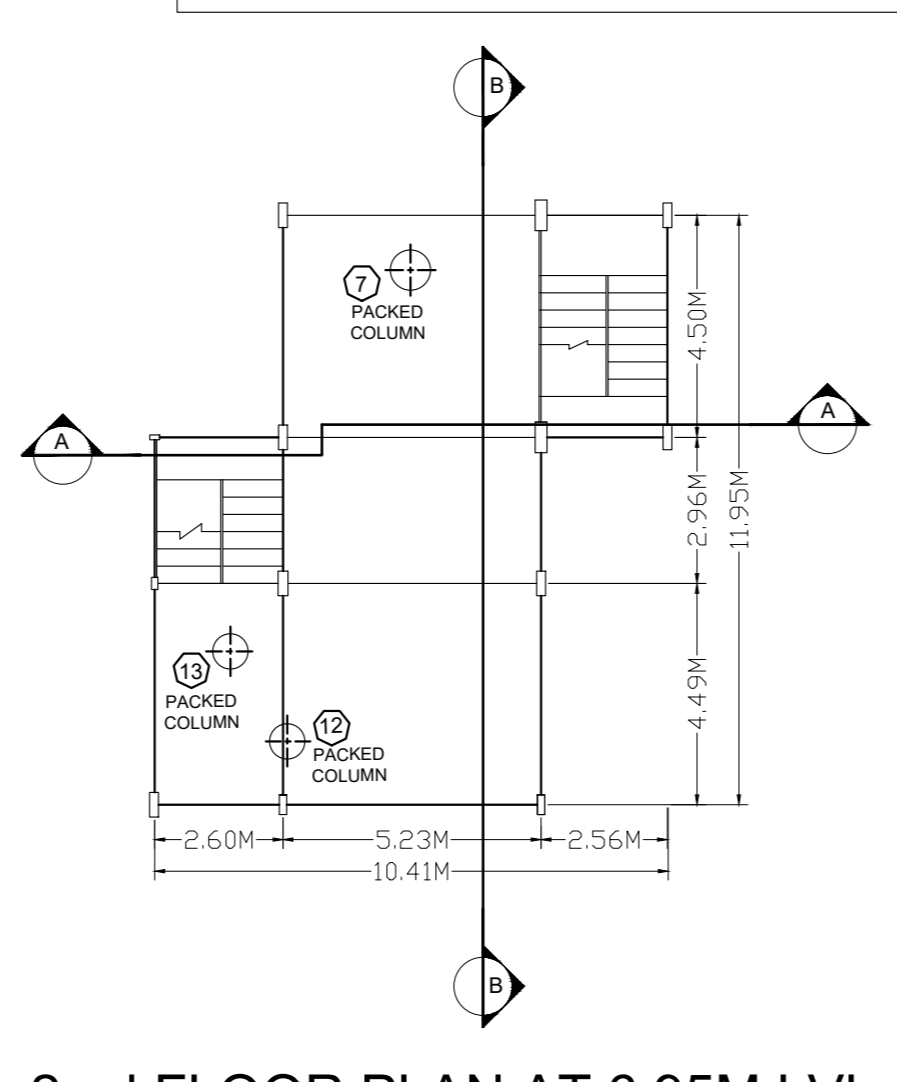
31 CHILLING PLANT (10 TR)
 SCALE 1:100



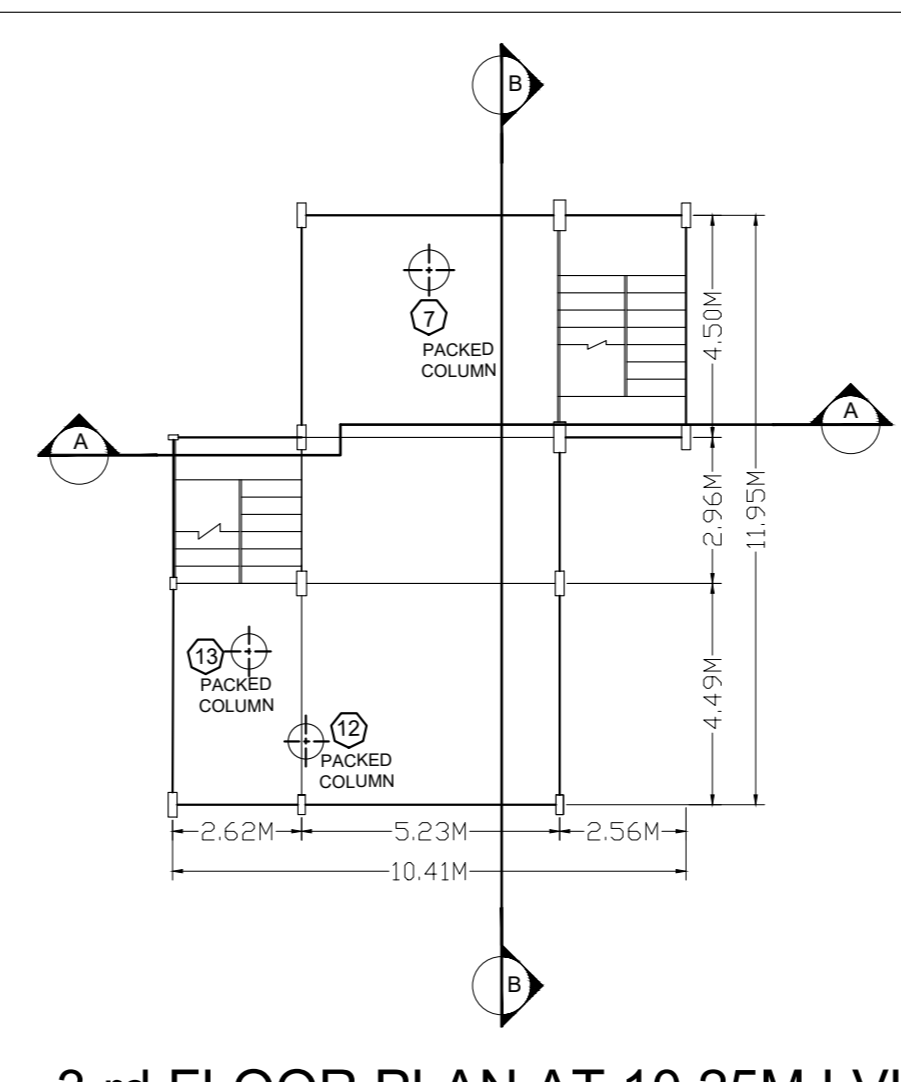
GROUND FLOOR PLAN AT 0.0M LVL



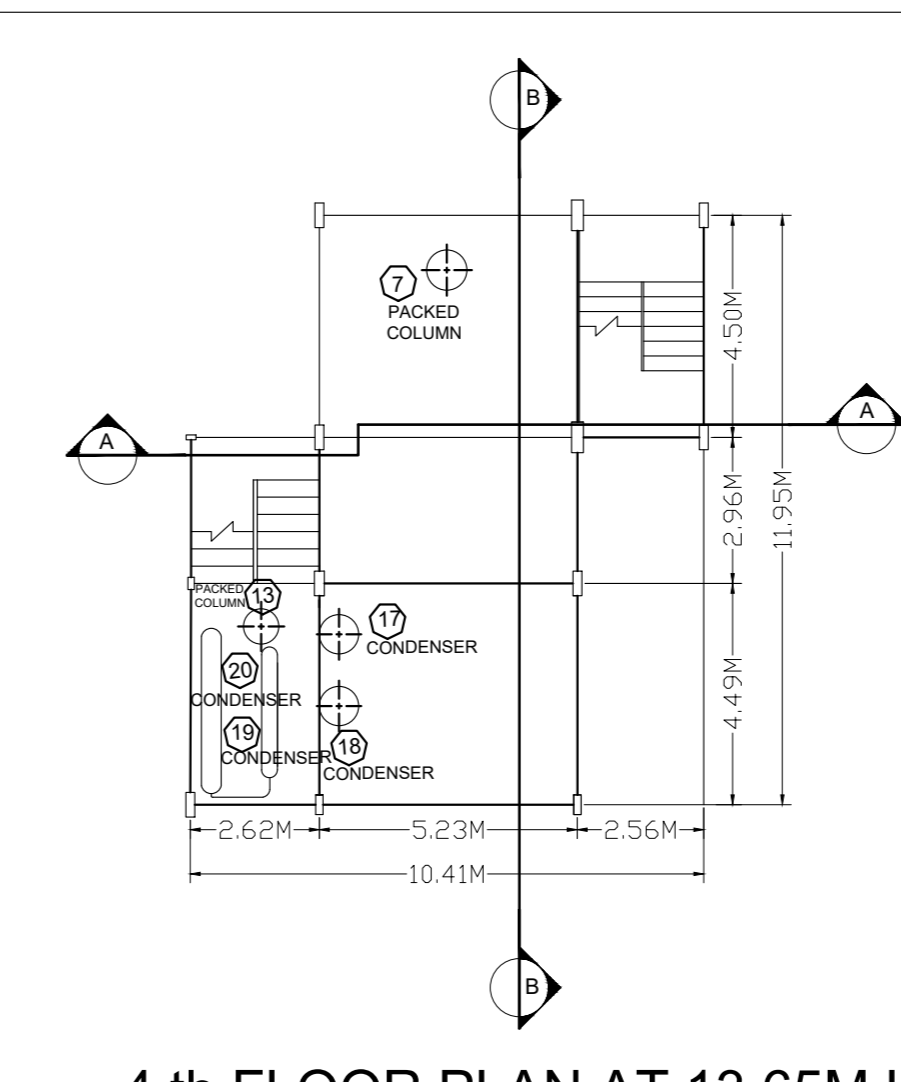
1st FLOOR PLAN AT 3.25M LVL



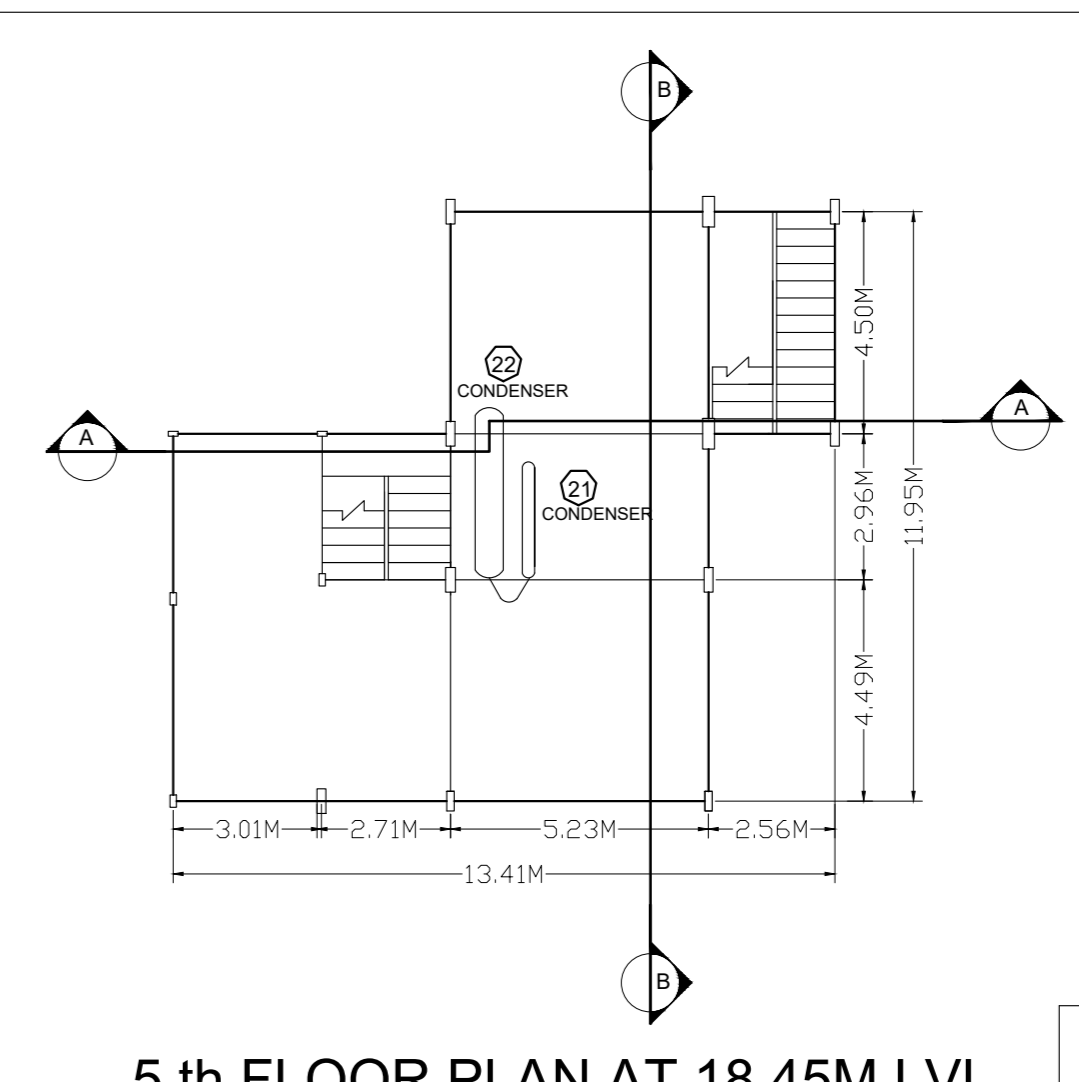
2nd FLOOR PLAN AT 6.95M LVL



3rd FLOOR PLAN AT 10.25M LVL



4th FLOOR PLAN AT 13.65M LVL



5th FLOOR PLAN AT 18.45M LVL

30 PRODUCTION PLANT
 SCALE 1:100

SULAKI CHEMICALS PVT LTD			
PLOT NO. C-33, LOTE PARSHURAM, M.I.D.C. AREA, TAL.KHED, DIST. RATNAGIRI, MAHARASHTRA-415 722.			
DRAWN	BY	DATE	TITLE
	SATISH SUTAR	02/08/21	PRODUCTION PLANT DETAILS & CHILLING PLANT & ABOVE GROUND TANK FARM AREA-1
CHECKED			
APPROVED			
SCALE	1:100	SHEET 2 OF 2	DRG. NO. : SULAKI/LOTE/LAYOUT/01
Devshree Industrial Solutions			0
Office - Chinchwad, Pune / Roha, Raigad			AO SIZE
7798090595, devshreeindustrialsolutions@gmail.com			