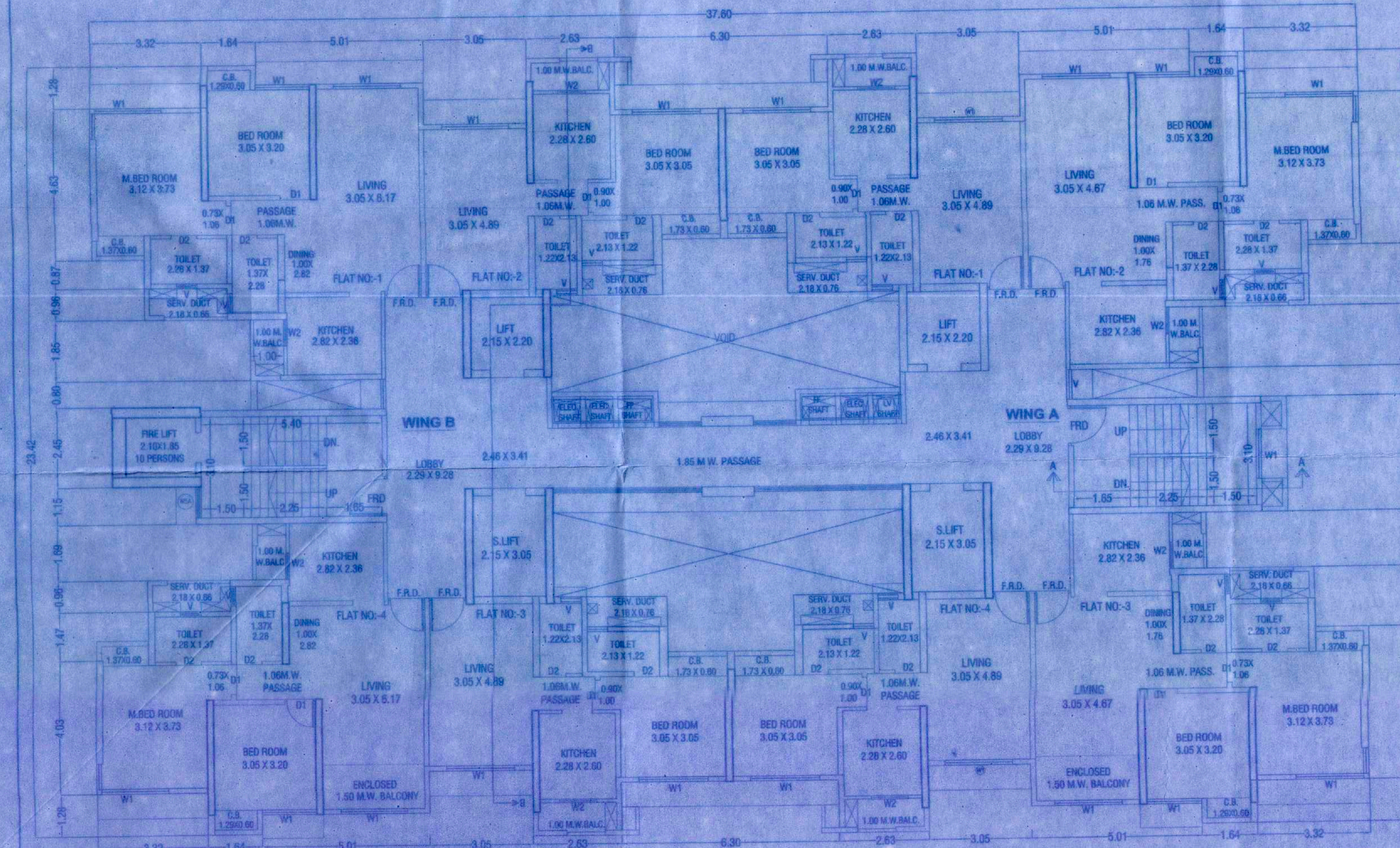
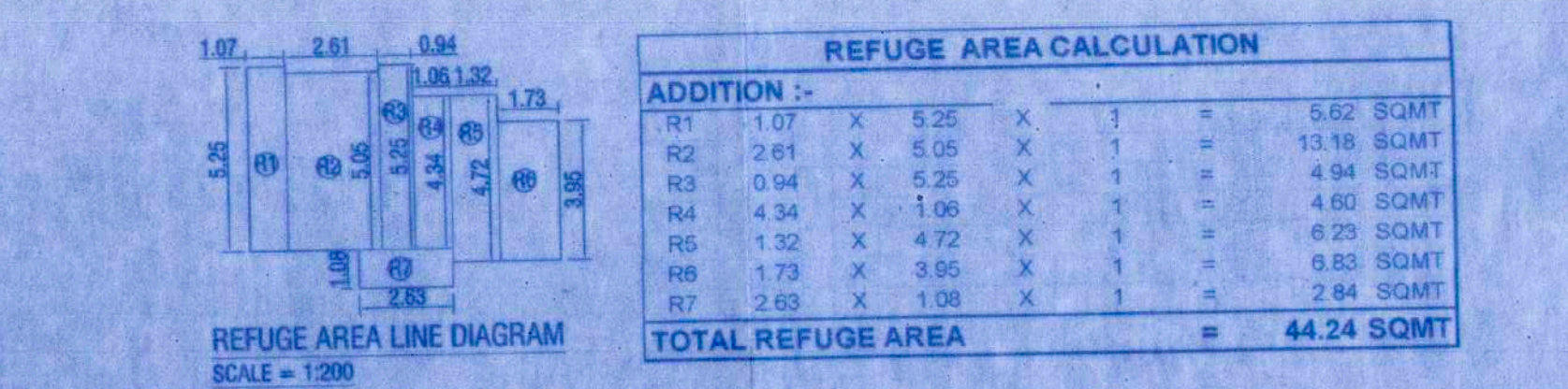


REFUGE FLOOR PLAN (3RD, 7TH, 12TH FLOOR)
Scale: 1:100

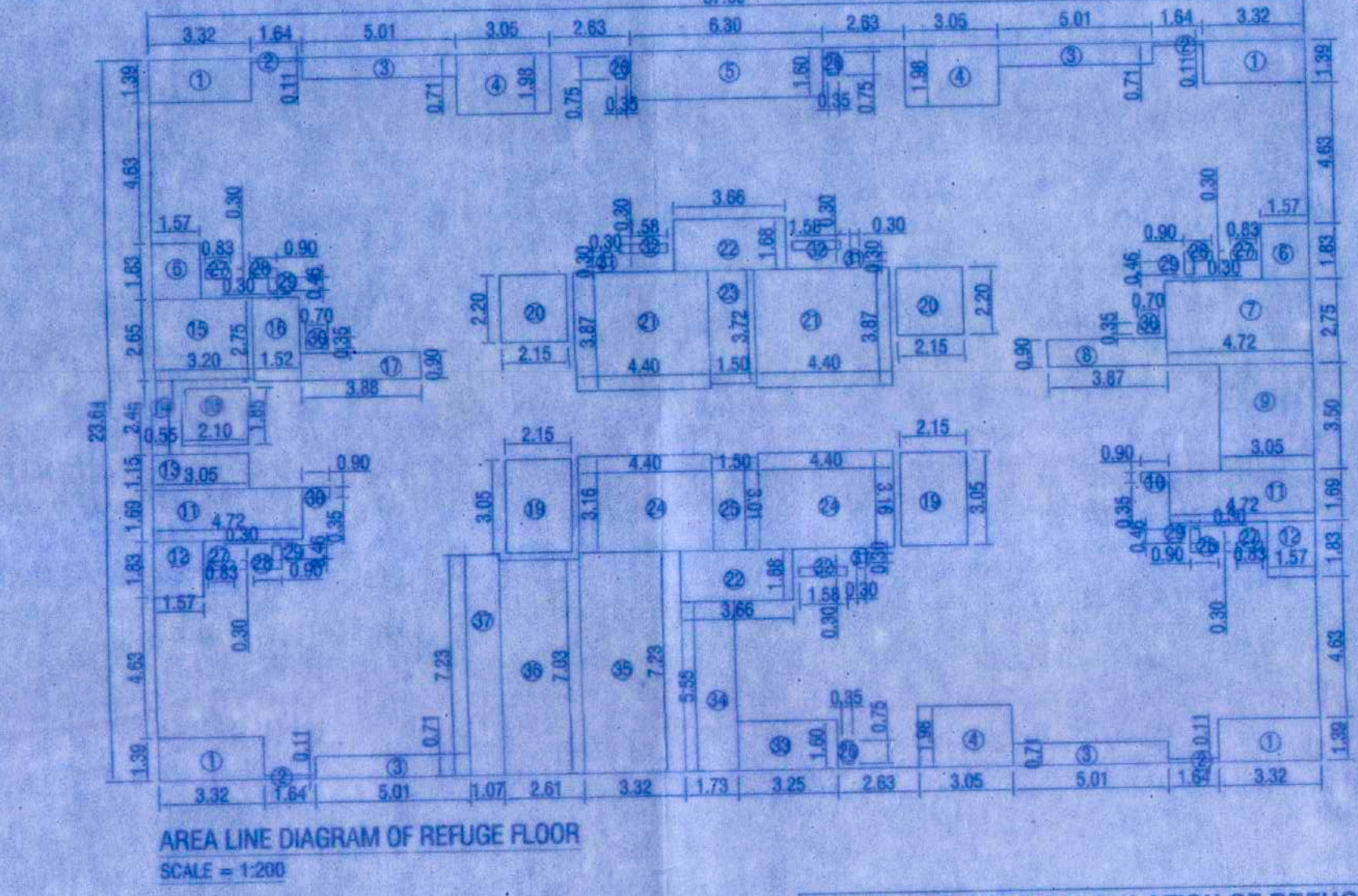


TYPICAL FLOOR PLAN (1ST TO 2ND, 4TH TO 6TH, 8TH TO 11TH, 13TH TO 15TH FLOOR)
Scale: 1:100



REFUGE AREA LINE DIAGRAM
SCALE = 1:200

REFUGE AREA CALCULATION				
ADDITION :-				
R1	1.07 X	5.26 X	1 =	5.62 SQMT
R2	2.61 X	5.09 X	1 =	13.18 SQMT
R3	0.94 X	5.25 X	1 =	4.94 SQMT
R4	4.34 X	1.09 X	1 =	4.63 SQMT
R5	1.32 X	4.72 X	1 =	6.23 SQMT
R6	1.73 X	3.05 X	1 =	5.23 SQMT
R7	2.63 X	1.09 X	1 =	2.84 SQMT
TOTAL REFUGE AREA				44.24 SQMT



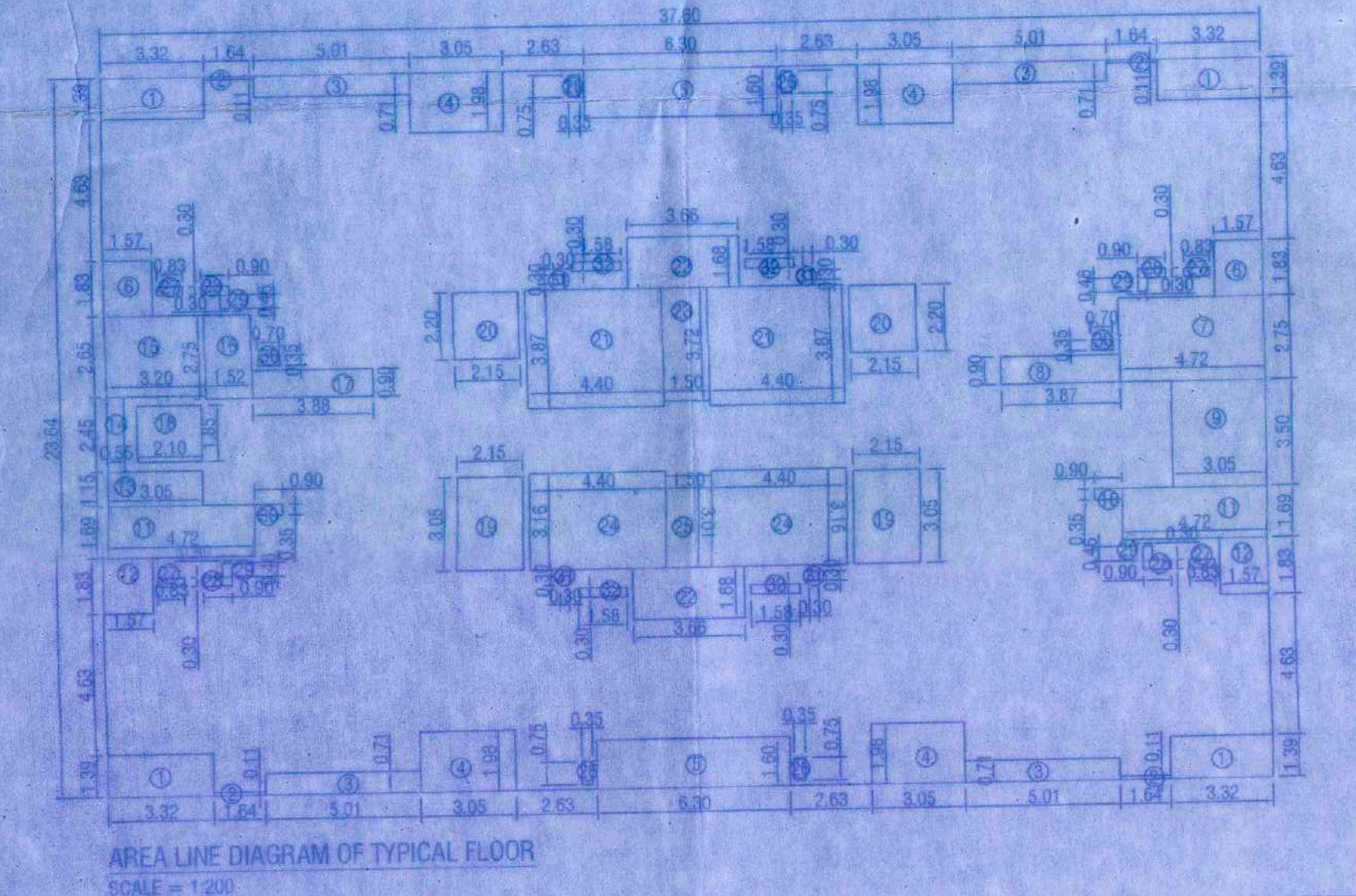
AREA LINE DIAGRAM OF REFUGE FLOOR
SCALE = 1:200

BUILT-UP AREA CALCULATION OF TYPICAL FLOOR				
A	37.60 X	23.64 X	1 =	888.86 SQMT
TOTAL ADDITION AREA				888.86 SQMT

DEDUCTION :- (P)				
1	3.32 X	1.39 X	4 =	18.46 SQMT
2	1.64 X	0.11 X	4 =	0.72 SQMT
3	5.01 X	0.71 X	4 =	14.23 SQMT
4	3.05 X	1.98 X	4 =	24.16 SQMT
5	6.30 X	1.60 X	2 =	20.16 SQMT
6	1.57 X	1.83 X	2 =	5.75 SQMT
7	4.72 X	2.75 X	1 =	12.98 SQMT
8	3.87 X	0.90 X	1 =	3.48 SQMT
9	3.05 X	3.50 X	1 =	10.68 SQMT
10	0.90 X	0.35 X	1 =	0.32 SQMT
11	4.72 X	1.89 X	2 =	17.89 SQMT
12	1.57 X	1.83 X	2 =	5.75 SQMT
13	3.05 X	1.15 X	1 =	3.51 SQMT
14	0.55 X	2.45 X	1 =	1.35 SQMT
15	3.20 X	2.55 X	1 =	8.16 SQMT
16	1.52 X	2.75 X	1 =	4.18 SQMT
17	3.58 X	0.90 X	1 =	3.22 SQMT
18	2.10 X	1.85 X	1 =	3.89 SQMT
19	2.15 X	3.05 X	2 =	13.12 SQMT
20	2.15 X	2.20 X	2 =	9.48 SQMT
21	4.40 X	3.87 X	2 =	34.06 SQMT
22	3.68 X	1.68 X	2 =	12.30 SQMT
23	1.50 X	3.72 X	1 =	5.58 SQMT
24	4.40 X	3.16 X	2 =	27.81 SQMT
25	1.50 X	3.01 X	1 =	4.52 SQMT
26	0.35 X	0.75 X	4 =	1.05 SQMT
27	0.63 X	0.30 X	4 =	0.76 SQMT
28	0.90 X	0.30 X	4 =	1.08 SQMT
29	0.30 X	0.46 X	4 =	0.55 SQMT
30	0.70 X	0.35 X	2 =	0.49 SQMT
31	0.30 X	0.30 X	4 =	0.36 SQMT
32	1.58 X	0.30 X	4 =	1.90 SQMT
TOTAL DEDUCTION AREA				270.77 SQMT
NET BUILT-UP AREA				618.09 SQMT
TOTAL B-UP AREA (TYPICAL FLR.)				618.09 SQMT

BUILT-UP AREA CALCULATION OF REFUGE FLOOR				
A	37.60 X	23.64 X	1 =	888.86 SQMT
TOTAL ADDITION AREA				888.86 SQMT

DEDUCTION :- (P)				
1	3.32 X	1.39 X	4 =	18.46 SQMT
2	1.64 X	0.11 X	4 =	0.72 SQMT
3	5.01 X	0.71 X	4 =	14.23 SQMT
4	3.05 X	1.98 X	4 =	24.16 SQMT
5	6.30 X	1.60 X	2 =	20.16 SQMT
6	1.57 X	1.83 X	2 =	5.75 SQMT
7	4.72 X	2.75 X	1 =	12.98 SQMT
8	3.87 X	0.90 X	1 =	3.48 SQMT
9	3.05 X	3.50 X	1 =	10.68 SQMT
10	0.90 X	0.35 X	1 =	0.32 SQMT
11	4.72 X	1.89 X	2 =	17.89 SQMT
12	1.57 X	1.83 X	2 =	5.75 SQMT
13	3.05 X	1.15 X	1 =	3.51 SQMT
14	0.55 X	2.45 X	1 =	1.35 SQMT
15	3.20 X	2.55 X	1 =	8.16 SQMT
16	1.52 X	2.75 X	1 =	4.18 SQMT
17	3.58 X	0.90 X	1 =	3.22 SQMT
18	2.10 X	1.85 X	1 =	3.89 SQMT
19	2.15 X	3.05 X	2 =	13.12 SQMT
20	2.15 X	2.20 X	2 =	9.48 SQMT
21	4.40 X	3.87 X	2 =	34.06 SQMT
22	3.68 X	1.68 X	2 =	12.30 SQMT
23	1.50 X	3.72 X	1 =	5.58 SQMT
24	4.40 X	3.16 X	2 =	27.81 SQMT
25	1.50 X	3.01 X	1 =	4.52 SQMT
26	0.35 X	0.75 X	4 =	1.05 SQMT
27	0.63 X	0.30 X	4 =	0.76 SQMT
28	0.90 X	0.30 X	4 =	1.08 SQMT
29	0.30 X	0.46 X	4 =	0.55 SQMT
30	0.70 X	0.35 X	2 =	0.49 SQMT
31	0.30 X	0.30 X	4 =	0.36 SQMT
32	1.58 X	0.30 X	4 =	1.90 SQMT
TOTAL DEDUCTION AREA				316.72 SQMT
NET BUILT-UP AREA				572.15 SQMT
TOTAL B-UP AREA (REFUGE FLR.)				572.15 SQMT



AREA LINE DIAGRAM OF TYPICAL FLOOR
SCALE = 1:200

PROFORMA - II 67
BLDG. NO.-1/ (WING-A & B)
(BASE + GRD./ST.(PT.) + PDD.-1 TO 5 + 1ST TO 15TH FLOOR)

CONTENTS OF SHEETS
TYPICAL FLR & REFUGE FLR PLAN & B-UP AREA LINE DIAGRAM, SECTION A-A & B-B, ETC.

STAMP OF APPROVAL OF PLAN
Amended
Plans are approved Subject to conditions prescribed in Form No. V.P. S04/0930/24 TMC/TD/10086/24... Dated: 05/02/2024
Deputy Engineer
Town Development Officer
Thane Municipal Corporation of The City of Thane

STAMP OF RECEIPT OF PLAN

DESCRIPTION
PROPOSED LAYOUT ON PLOT BEARING - S.NO.-31/A, 81/B, 81/C, S.NO.-83/2, 83/5, S.NO.-85/1C, 85/1D, 85/1E, 85/1F, 85/2, 85/3, 85/4, 85/5, AT VILLAGE - PANIPARHADI, THANE - (SECTOR-4).

NAME & SIGNATURE OF OWNERS/POAH
SHETH DEVELOPERS PVT. LTD.
3RD FLOOR,
PRIUS INFINITY, PARAMARJE B SCHEME,
SUBHASH ROAD,
VILE PARLE (E) - MUMBAI - 67

ARCHITECT
10 FOLDS
ARCHITECTS & CONSULTANTS
G-2, A Wing, devcorpard, eastern express highway,
cobalt junction, Kharcol, Thane (W) - 401 601,
t: 022-4108862 / 87 / 84, Email: 10foldsarchitects@gmail.com