

CONTENTS OF SHEET
 1. PLAN, SECTION & ELEVATIONS OF BUILDING
 2. STRUCTURAL DRAWINGS & FOUNDATION DESIGN
 3. ELECTRICAL, MECHANICAL & SANITARY LAYOUTS
 4. WATER SUPPLY & SANITARY LAYOUTS
 5. ESTIMATE OF WORKS
 6. CONTRACT DOCUMENTS
 7. SPECIFICATIONS
 8. BILL OF MATERIALS (B.M.)
 9. OTHER DOCUMENTS

THIS CANCELS APPROVAL TO THE PREVIOUS PLANS
 SANCTION UNDER NO. CHE/RS/100/LST/ENW/.../2011/2021

APPROVED SUBJECT TO THE CONDITIONS MENTIONED
 IN THIS OFFICE LETTER NO. CHE/RS/100/LST/ENW/.../2011/2021
 Brijlax
 Lahu
 Pali
 EXECUTIVE ENG/184
 Sd/-
 Chief Engineer
 A.E. (B.P.L.A.)

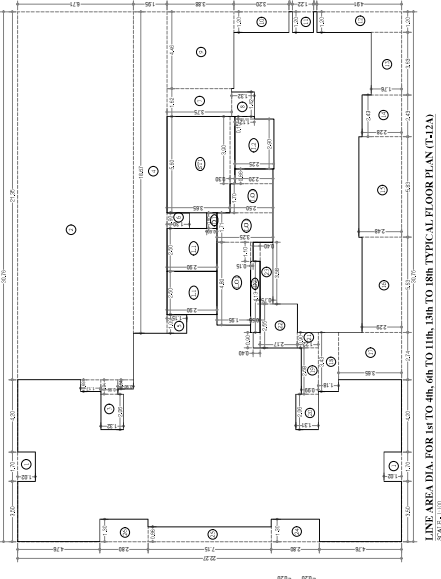
STAMP AND DATE OF APPROVAL
 STAMP AND DATE OF RECEIPT

PROPOSED BUILDING NO. 2 ON LAND BEARING CTS NO. 17A, 17B, 17C, 17D, 17E, 17F, 17G, 17H, 17I, 17J, 17K, 17L, 17M, 17N, 17O, 17P, 17Q, 17R, 17S, 17T, 17U, 17V, 17W, 17X, 17Y, 17Z, 17AA, 17AB, 17AC, 17AD, 17AE, 17AF, 17AG, 17AH, 17AI, 17AJ, 17AK, 17AL, 17AM, 17AN, 17AO, 17AP, 17AQ, 17AR, 17AS, 17AT, 17AU, 17AV, 17AW, 17AX, 17AY, 17AZ, 17BA, 17BB, 17BC, 17BD, 17BE, 17BF, 17BG, 17BH, 17BI, 17BJ, 17BK, 17BL, 17BM, 17BN, 17BO, 17BP, 17BQ, 17BR, 17BS, 17BT, 17BU, 17BV, 17BW, 17BX, 17BY, 17BZ, 17CA, 17CB, 17CC, 17CD, 17CE, 17CF, 17CG, 17CH, 17CI, 17CJ, 17CK, 17CL, 17CM, 17CN, 17CO, 17CP, 17CQ, 17CR, 17CS, 17CT, 17CU, 17CV, 17CW, 17CX, 17CY, 17CZ, 17DA, 17DB, 17DC, 17DD, 17DE, 17DF, 17DG, 17DH, 17DI, 17DJ, 17DK, 17DL, 17DM, 17DN, 17DO, 17DP, 17DQ, 17DR, 17DS, 17DT, 17DU, 17DV, 17DW, 17DX, 17DY, 17DZ, 17EA, 17EB, 17EC, 17ED, 17EE, 17EF, 17EG, 17EH, 17EI, 17EJ, 17EK, 17EL, 17EM, 17EN, 17EO, 17EP, 17EQ, 17ER, 17ES, 17ET, 17EU, 17EV, 17EW, 17EX, 17EY, 17EZ, 17FA, 17FB, 17FC, 17FD, 17FE, 17FF, 17FG, 17FH, 17FI, 17FJ, 17FK, 17FL, 17FM, 17FN, 17FO, 17FP, 17FQ, 17FR, 17FS, 17FT, 17FU, 17FV, 17FW, 17FX, 17FY, 17FZ, 17GA, 17GB, 17GC, 17GD, 17GE, 17GF, 17GG, 17GH, 17GI, 17GJ, 17GK, 17GL, 17GM, 17GN, 17GO, 17GP, 17GQ, 17GR, 17GS, 17GT, 17GU, 17GV, 17GW, 17GX, 17GY, 17GZ, 17HA, 17HB, 17HC, 17HD, 17HE, 17HF, 17HG, 17HH, 17HI, 17HJ, 17HK, 17HL, 17HM, 17HN, 17HO, 17HP, 17HQ, 17HR, 17HS, 17HT, 17HU, 17HV, 17HW, 17HX, 17HY, 17HZ, 17IA, 17IB, 17IC, 17ID, 17IE, 17IF, 17IG, 17IH, 17II, 17IJ, 17IK, 17IL, 17IM, 17IN, 17IO, 17IP, 17IQ, 17IR, 17IS, 17IT, 17IU, 17IV, 17IW, 17IX, 17IY, 17IZ, 17JA, 17JB, 17JC, 17JD, 17JE, 17JF, 17JG, 17JH, 17JI, 17JJ, 17JK, 17JL, 17JM, 17JN, 17JO, 17JP, 17JQ, 17JR, 17JS, 17JT, 17JU, 17JV, 17JW, 17JX, 17JY, 17JZ, 17KA, 17KB, 17KC, 17KD, 17KE, 17KF, 17KG, 17KH, 17KI, 17KJ, 17KK, 17KL, 17KM, 17KN, 17KO, 17KP, 17KQ, 17KR, 17KS, 17KT, 17KU, 17KV, 17KW, 17KX, 17KY, 17KZ, 17LA, 17LB, 17LC, 17LD, 17LE, 17LF, 17LG, 17LH, 17LI, 17LJ, 17LK, 17LL, 17LM, 17LN, 17LO, 17LP, 17LQ, 17LR, 17LS, 17LT, 17LU, 17LV, 17LW, 17LX, 17LY, 17LZ, 17MA, 17MB, 17MC, 17MD, 17ME, 17MF, 17MG, 17MH, 17MI, 17MJ, 17MK, 17ML, 17MN, 17MO, 17MP, 17MQ, 17MR, 17MS, 17MT, 17MU, 17MV, 17MW, 17MX, 17MY, 17MZ, 17NA, 17NB, 17NC, 17ND, 17NE, 17NF, 17NG, 17NH, 17NI, 17NJ, 17NK, 17NL, 17NM, 17NO, 17NP, 17NQ, 17NR, 17NS, 17NT, 17NU, 17NV, 17NW, 17NX, 17NY, 17NZ, 17OA, 17OB, 17OC, 17OD, 17OE, 17OF, 17OG, 17OH, 17OI, 17OJ, 17OK, 17OL, 17OM, 17ON, 17OO, 17OP, 17OQ, 17OR, 17OS, 17OT, 17OU, 17OV, 17OW, 17OX, 17OY, 17OZ, 17PA, 17PB, 17PC, 17PD, 17PE, 17PF, 17PG, 17PH, 17PI, 17PJ, 17PK, 17PL, 17PM, 17PN, 17PO, 17PP, 17PQ, 17PR, 17PS, 17PT, 17PU, 17PV, 17PW, 17PX, 17PY, 17PZ, 17QA, 17QB, 17QC, 17QD, 17QE, 17QF, 17QG, 17QH, 17QI, 17QJ, 17QK, 17QL, 17QM, 17QN, 17QO, 17QP, 17QQ, 17QR, 17QS, 17QT, 17QU, 17QV, 17QW, 17QX, 17QY, 17QZ, 17RA, 17RB, 17RC, 17RD, 17RE, 17RF, 17RG, 17RH, 17RI, 17RJ, 17RK, 17RL, 17RM, 17RN, 17RO, 17RP, 17RQ, 17RR, 17RS, 17RT, 17RU, 17RV, 17RW, 17RX, 17RY, 17RZ, 17SA, 17SB, 17SC, 17SD, 17SE, 17SF, 17SG, 17SH, 17SI, 17SJ, 17SK, 17SL, 17SM, 17SN, 17SO, 17SP, 17SQ, 17SR, 17SS, 17ST, 17SU, 17SV, 17SW, 17SX, 17SY, 17SZ, 17TA, 17TB, 17TC, 17TD, 17TE, 17TF, 17TG, 17TH, 17TI, 17TJ, 17TK, 17TL, 17TM, 17TN, 17TO, 17TP, 17TQ, 17TR, 17TS, 17TT, 17TU, 17TV, 17TW, 17TX, 17TY, 17TZ, 17UA, 17UB, 17UC, 17UD, 17UE, 17UF, 17UG, 17UH, 17UI, 17UJ, 17UK, 17UL, 17UM, 17UN, 17UO, 17UP, 17UQ, 17UR, 17US, 17UT, 17UU, 17UV, 17UW, 17UX, 17UY, 17UZ, 17VA, 17VB, 17VC, 17VD, 17VE, 17VF, 17VG, 17VH, 17VI, 17VJ, 17VK, 17VL, 17VM, 17VN, 17VO, 17VP, 17VQ, 17VR, 17VS, 17VT, 17VU, 17VV, 17VW, 17VX, 17VY, 17VZ, 17WA, 17WB, 17WC, 17WD, 17WE, 17WF, 17WG, 17WH, 17WI, 17WJ, 17WK, 17WL, 17WM, 17WN, 17WO, 17WP, 17WQ, 17WR, 17WS, 17WT, 17WU, 17WV, 17WW, 17WX, 17WY, 17WZ, 17XA, 17XB, 17XC, 17XD, 17XE, 17XF, 17XG, 17XH, 17XI, 17XJ, 17XK, 17XL, 17XM, 17XN, 17XO, 17XP, 17XQ, 17XR, 17XS, 17XT, 17XU, 17XV, 17XW, 17XZ, 17YA, 17YB, 17YC, 17YD, 17YE, 17YF, 17YG, 17YH, 17YI, 17YJ, 17YK, 17YL, 17YM, 17YN, 17YO, 17YP, 17YQ, 17YR, 17YS, 17YT, 17YU, 17YV, 17YW, 17YZ, 17ZA, 17ZB, 17ZC, 17ZD, 17ZE, 17ZF, 17ZG, 17ZH, 17ZI, 17ZJ, 17ZK, 17ZL, 17ZM, 17ZN, 17ZO, 17ZP, 17ZQ, 17ZR, 17ZS, 17ZT, 17ZU, 17ZV, 17ZW, 17ZX, 17ZY, 17ZZ	REVISIONS	DATE	BY
1	As per drawing	17/05/2021	
2	As per drawing	17/05/2021	

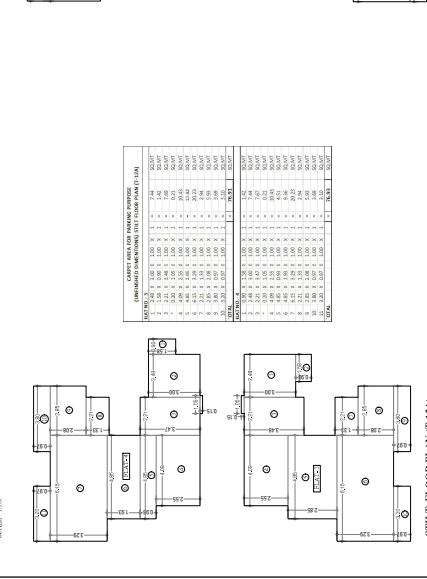
ITEM	DESCRIPTION	UNIT	QUANTITY	RATE	AMOUNT
1	CEMENT CONCRETE (1:2:4)	m ³	100	1000	100000
2	CEMENT CONCRETE (1:1.5:3)	m ³	50	1000	50000
3	CEMENT CONCRETE (1:1:2)	m ³	50	1000	50000
4	CEMENT CONCRETE (1:2:4) IN SLAB	m ³	50	1000	50000
5	CEMENT CONCRETE (1:2:4) IN WALL	m ³	50	1000	50000
6	CEMENT CONCRETE (1:2:4) IN FLOOR	m ³	50	1000	50000
7	CEMENT CONCRETE (1:2:4) IN ROOF	m ³	50	1000	50000
8	CEMENT CONCRETE (1:2:4) IN COLUMN	m ³	50	1000	50000
9	CEMENT CONCRETE (1:2:4) IN BEAM	m ³	50	1000	50000
10	CEMENT CONCRETE (1:2:4) IN PAVEMENT	m ³	50	1000	50000
11	CEMENT CONCRETE (1:2:4) IN CURB	m ³	50	1000	50000
12	CEMENT CONCRETE (1:2:4) IN KERB	m ³	50	1000	50000
13	CEMENT CONCRETE (1:2:4) IN CHAMFER	m ³	50	1000	50000
14	CEMENT CONCRETE (1:2:4) IN PLINCH	m ³	50	1000	50000
15	CEMENT CONCRETE (1:2:4) IN FINISH	m ³	50	1000	50000
16	CEMENT CONCRETE (1:2:4) IN TOTAL	m ³	50	1000	50000

ITEM	DESCRIPTION	UNIT	QUANTITY	RATE	AMOUNT
1	CEMENT CONCRETE (1:2:4) IN TOTAL	m ³	50	1000	50000
2	CEMENT CONCRETE (1:2:4) IN TOTAL	m ³	50	1000	50000
3	CEMENT CONCRETE (1:2:4) IN TOTAL	m ³	50	1000	50000
4	CEMENT CONCRETE (1:2:4) IN TOTAL	m ³	50	1000	50000
5	CEMENT CONCRETE (1:2:4) IN TOTAL	m ³	50	1000	50000
6	CEMENT CONCRETE (1:2:4) IN TOTAL	m ³	50	1000	50000
7	CEMENT CONCRETE (1:2:4) IN TOTAL	m ³	50	1000	50000
8	CEMENT CONCRETE (1:2:4) IN TOTAL	m ³	50	1000	50000
9	CEMENT CONCRETE (1:2:4) IN TOTAL	m ³	50	1000	50000
10	CEMENT CONCRETE (1:2:4) IN TOTAL	m ³	50	1000	50000

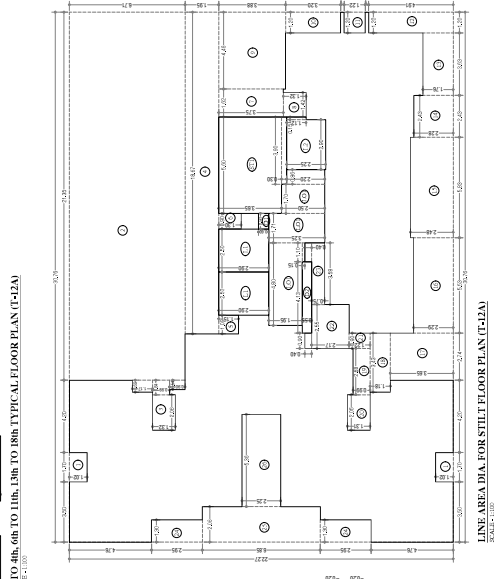
ITEM	DESCRIPTION	UNIT	QUANTITY	RATE	AMOUNT
1	CEMENT CONCRETE (1:2:4) IN TOTAL	m ³	50	1000	50000
2	CEMENT CONCRETE (1:2:4) IN TOTAL	m ³	50	1000	50000
3	CEMENT CONCRETE (1:2:4) IN TOTAL	m ³	50	1000	50000
4	CEMENT CONCRETE (1:2:4) IN TOTAL	m ³	50	1000	50000
5	CEMENT CONCRETE (1:2:4) IN TOTAL	m ³	50	1000	50000
6	CEMENT CONCRETE (1:2:4) IN TOTAL	m ³	50	1000	50000
7	CEMENT CONCRETE (1:2:4) IN TOTAL	m ³	50	1000	50000
8	CEMENT CONCRETE (1:2:4) IN TOTAL	m ³	50	1000	50000
9	CEMENT CONCRETE (1:2:4) IN TOTAL	m ³	50	1000	50000
10	CEMENT CONCRETE (1:2:4) IN TOTAL	m ³	50	1000	50000



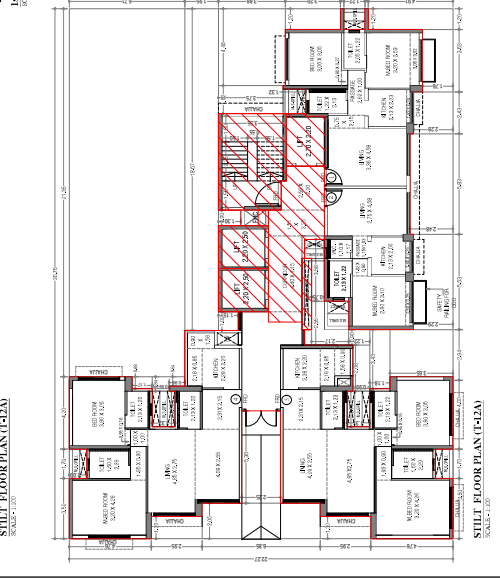
LINE AREA DIA. FOR 1st TO 4th, 6th TO 11th, 13th TO 18th. TYPICAL FLOOR PLAN (F-12A)



1st TO 4th, 6th TO 11th, 13th TO 18th. TYPICAL FLOOR PLAN (F-12A)



2nd TO 4th, 6th TO 11th, 13th TO 18th. TYPICAL FLOOR PLAN (F-12B)



3rd TO 4th, 6th TO 11th, 13th TO 18th. TYPICAL FLOOR PLAN (F-12C)