

Equipment No.	Description	Quantity, No.	Material of Construction	Capacity
B-2	Blower	1	FRP	750 CFM
E-1	Scrubber	1	HDPE	450 mm dia.x 7 mtr.height
EV-1A/B	Vaporiser	1	MS	500 kg/hr
P-103	pump	1	P.P	1 m3/hr
T-3	Storage Tank	1	HDPE	10 KL
T-1125	Storage Tank	1	C.S	20 KL
P-31	pump	1	C.S	4 m3/hr
D-1A/B	Dryer	1	C.S	1.1 KL
D-2A/B	Dryer	1	C.S	1.1 KL
P-102A/B	feed pump	2	C.S	1 m3/hr
T-2	day tank	1	C.S	36 KL
V-7A/B	Separator	2	Glass	200 Ltr.
C-2A/B	Reactor	2	C.S	1200 mm dia.x 8 mtr.height
C-3	Scrubber	1	C.S	635 Ltr.
E-1	Cooler	1	Graphite	12 m2
E-2A/B	Cooler	2	Graphite	30.4 m2
E-5A/B	Condensor	2	Graphite	5.8 m2
P-104A/B	feed pump	2	C.S	4 m3/hr
P-105A/B/C/D	pump	4	C.S	50 m3/hr
P-106	pump	1	C.S	12 m3/hr
P-107A/B	pump	2	C.S	4 m3/hr
T-4	storage tank	1	C.S	24 KL
V-1	feed tank	1	C.S	2 KL
V-2A/B	Separator	2	C.S	1.6 KL
V-3A/B	separator	2	C.S	532 Lit.
V-4	vessel	1	C.S	1 KL
C-4A/B	column	2	C.S	524 mm dia.x 8 mtr.height
C-5	absorber	1	Graphite	32.98 m2
EJ-4	Ejector	1	Graphite	500 mm WC
E-3A/B	Reboiler	2	C.S	5 m2
E-4A/B	Condensor	2	Graphite	4 m2
P-108A/B/C/D	circulation pump	4	C.S	4 m3/hr
P-109A/B	pump	2	P.P	5 m3/hr
P-117A/B	pump	2	P.P	11 m3/hr

RECOVERY TANK - M.S. - 40KL

M.S. 15K (1+1+1+1+1)
A.S. - 15K CI+

CLOMN YARD

R.C.C. + A.C. SHEET PILING

Chiller = 1800 - 1
320 - 2.

PNCB :- 6 TANK

PMA Cache - TANK SS

BLENDER

BEAKER - 1+1

RECOVERY TANK

V - 6 - 1220
1206

HE - 6203 - A, B
4D

R - 1146, 1138, 1126

SPOND - 1 1116

RBD - PUSHER

Collony Tower - 6 + 2 + 1

✓ T-5A/B	tank	A, B, C, D, E, F	6 Nos	2	HDPE	75 KL
T-9	pump			1	HDPE	5 m ³ /hr
V-5	Separator			1	Glass	200 Lit.
V-6	Vessel			1	HDPE	1 KL
V-16	vessel			1	HDPE/FRP	2 KL
P-122A/B	pump			2	PP	2 m ³ /hr
✓ C-7	column			1	C.S	1100 mm dia.x 18.442 mtr.height
E-7	reboiler			1	C.S	22 m ²
E-8	condensor			1	C.S	24.38 m ²
E-9	condensor			1	C.S	1.1 m ²
E-10	cooler			1	C.S	11 m ²
E-5A/B/C	cooler			3	C.S	5 m ²
P-119A/B	pump			2	C.S	4.2 m ³ /hr
P-110A/B	pump			2	C.S	6 m ³ /hr
V-9	accumulator			1	C.S	200 Lit.
✓ C-8	Column			1	C.S	700 mm dia.x 21 mtr.height
E-11	reboiler			1	C.S	14 m ²
E-12	condensor			1	C.S	10 m ²
E-13	condensor			1	C.S	1 m ²
E-14	cooler			1	C.S	5.7 m ²
P-111A/B	pump			2	C.S	3 m ³ /hr
P-112 A/B	pump			2	C.S	10 m ³ /hr
P-113	pump			1	C.S	5 m ³ /hr
P-120A/B	pump			2	C.S	2.2 m ³ /hr
✓ T-6A/B	storage tank			2	C.S	84 KL
T-8	tank			1	C.S	18 KL
V-10	Vessel			1	C.S	200 Lit.
C-9	column			1	C.S	350 mm dia.x 18.848 mtr.height
E-16	reboiler			1	C.S	4.4 m ²
E-17	condensor			1	C.S	5 m ²
P-115	pump			1	C.S	10 m ³ /hr
T-7	tank			1	C.S	24 KL
V-8	Vessel			1	C.S	200 Lit.
V-14	vessel			1	C.S	200 Lit.
T-1A/B/C	tank			3	C.S	100 KL
P-101A/B/C	pump			3	C.S	10 m ³ /hr

PNA washing

②

6201 - A, B, C, D

R-1135, 1115, 1145, 1125

AUTOCORE - R 5107, 5104, 5101 (5).
5105, 5106, 5108
2014

NF COPY ~~AL~~ - NH3 PAY TANK
Storage tank
5403

✓ R-6101	Reactor	1	SS 316	1.2 KL
✓ R-6102	Reactor	1	SS 316	1.2 KL
✓ R-6103	Reactor	1	SS 316	1.2 KL
SM-6101	Static Mixer	1	SS 316	-
V-6102	Pot	1	MS with SS 316 Cladded	1.5 KL
T-6115	Storage Tank	1	Aluminium	5 KL
T-3245A	Storage Tank	1	SS316	4.5 KL
P-6001 A/B	Pump	2	Aluminium	801/120 LPH
P-6008 A/B	Pump-	2	Alloy-20	801/120 LPH
T-6101	Vessel	1	SS 316	✓ 1.2 KL
R-6106	Reactor	1	SS 316	✓ 0.3 KL
✓ T-6103	Reactor	1	SS 316	1.2 KL
R-6107	Reactor	1	SS 316	✓ 0.3 KL
T-6117	Vessel	1	SS 316	1.5 mtr. Dia.x 2.4 mtr. Length
T-6117 Packing	Vessel	1	SS 316	-
HE-6103	Cooler	1	SS 316	5.92 m2
P-6108A/B	Pump	2	Alloy-20	801/120 LPH
R-6105	Vessel	1	SS 316	1.2 KL
T-6109	Vessel	1	SS 316	1.2 KL
T-6116	Vessel	1	SS 316	1.5 mtr. Dia.x 2.4 mtr. Length
T-6116 Packing	Vessel	1	SS 316	-
V-6101	Vessel	1	SS 316	100 lit
P-6102A/B	Pump	2	SS 316	1803/270 LPH
T-6104	Vessel	1	SS 316	1.2 KL
R-6108	Reactor	1	SS 316	0.3 KL
T-6108	Vessel	1	SS 316	1.2 KL
T- DMW1/DMW 2	Vessel	2	HDPE	10 KL
T-6118	Vessel	1	SS 316	1.5 mtr. Dia.x 2.4 mtr. Length
T-6118 Packing	Vessel	1	SS 316	-
V-6103	Vessel	1	SS 316	0.1 KL

WATER TANK

V H2O - HAND WATER TANK

V 1111B

1113

Soda ASHA DAY TANK

MNO3 " "

(3)

33 DCBU - TOP

HCL

T-3213 - 11KL - 1

T1 3221 - 32KL - 5

T-3220 - 40KL - 1

H2O - sintex - 3

Soda - day tank - ~~SS~~ - 1 + 1

Sodium - Sinter - 3

P-6113	Pump	1	SS 316	1.55 m ³ /hr @ 12 mlc
T-6119	Vessel	1	SS 316	0.3 KL
P-6109 A/B	Pump	2	SS 316	1202/180 LPH
T-6118A	Vessel	1	MS	0.5 KL
P-6104 C/D	Pump	2	SS 316	1202/180 LPH
HE-6104	Heat Exchanger	1	SS 316	12.9 m ²
P-6103 A	Pump	1	SS 316	10 m ³ /hr @ 60 mlc
C-6101	Column	1	SS 316	0.85 mtr.dia. X 12.6 mtr. Height
HE-6102	Heat Exchanger	1	SS 316	7.5 m ²
HE-6101	Reboiler	1	SS 316	11 m ²
HE-6105	Heat Exchanger	1	SS 316	2.2 m ²
T-6110	Column	1	SS 316	1.1 KL
T-6114	Vessel	1	Ms with SS 316 Cladded	4.4 KL
P-6104 A/B	Pump	2	SS 316	1803/270 LPH
VP-6101	Vacuum Pump	1		
	Vaccum Trap	1	MS	0.6 mtr.Dia. x 1.2 mtr.length
T-3245B	Storage Tank	1	HDPE	5 KL
P-6114 A/B	Pump	2	SS 316	164/25 LPH
SC-6101	Column	1	SS 316	0.25 mtr. Dia.x 8.5 mtr. Height (Packing Ht.6 mtr.)
SC-6102	Column	1	SS 316	0.3 mtr. Dia.x 8.5 mtr. Height (Packing Ht.6 mtr.)
T-6111	Tank	1	SS 316	0.42 KL
P-6106A/B	Pump	2	PPH	5 m ³ /hr @ 22 mlc
SCB-6101A/B	Blower	2	PP/FRP	120 m ³ /hr @ 250 mm WC
T-501	Vessel	1	MS	2 KL
P-501	Pump	1	MS	2 m ³ /hr @ 20 mlc
HE-6201A	Heat Exchanger	1	CS	403 m ²
HE-6203A	Heat Exchanger	1	CS	269 m ²
HE-6201C	Heat Exchanger	1	CS	403 m ²
HE-6203C	Heat Exchanger	1	CS	269 m ²
✓ V-1206	Tank	1	MS	19 KL
✓ V-1205	Tank	1	MS/SS Claded	12 KL
✓ V-1225	Tank	1	MS/SS Claded	12 KL
P-6208A	Pump	1	SS316	10 m ³ /hr@15 mlc

T-3220 - 88 LT

SS - 8872

9LL: - 4 Nos - 35 LL - 1 with motor

Totum Receiver - Tank.

SS Receiver - 1
 SS Tank - Totum - 2 Nos
 HRP - Receiver - 4
 SS Receiver - 8

P-6205A	Pump	1	SS316	10 m ³ /hr@20 mlc
HE-6204A	Heat Exchanger	1	SS316	50 m ²
HE-6204B	Heat Exchanger	1	SS316	10 m ²
P-6203A	Pump	1	SS316	50 m ³ @20 mlc
P-6203B	Pump	1	SS316	50 m ³ @20 mlc
HE-6206A	Heat Exchanger	1	SS316	40 m ²
HE-6206B	Heat Exchanger	1	SS316	10 m ²
P-6206A	Pump	1	SS316	25 m ³ /hr@20 mlc
P-6206B	Pump	1	SS316	25 m ³ /hr@20 mlc
HE-6205A	Heat Exchanger	1	SS316	50 m ²
HE-6205B	Heat Exchanger	1	SS316	10 m ²
P-6204A	Pump	1	SS316	50 m ³ @20 mlc
P-6204B	Pump	1	SS316	50 m ³ @20 mlc
✓ C-1301	Column	1	CS/SS 316	1220 mm dia.X 33.922 mtr.height
E-1324	Heat Exchanger	1	CS	
E-1302	Heat Exchanger	1	CS	133 m ²
E-1304	Condenser	1	SS 316	97 m ²
E-1304 A/B	Heat Exchanger	2	M.S.	9 m ²
P - 19	pump	1	MS/CS (J)	60 m ³ /hr
EJ-01	Ejector system	1	Graphite	15 kg/hr
✓ C-1311	column	1	CS/SS 316	600 mm dia.X 26.490 mtr.height
E-1312	Heat Exchanger	1	CS	29 m ²
E-1313	condenser	1	SS 316	24 m ²
E-1305 A/B	Heat Exchanger	2	M.S.	2.5 m ²
P - 21	pump	1	CS (J)	15 m ³ /hr
EJ-02	Ejector System	1	Graphite	7.5 Kg/hr
T -1252	tank	1	CS	6 m ³
P-12	pump	1	SS 316	5 m ³ /hr
✓ C-1321	column	1	CS/SS 316	680 dia. y 20.
E-1322	Heat Exchanger	1	CS	17.5 m ²
E-1323	condenser	1	SS 316	13 m ²
E-1305 A/B	Heat Exchanger	2	M.S.	2.5 m ²
P - 25	pump	1	CS (J)	10 m ³ /hr
EJ-03	ejector system	1	Graphite	5 kg/hr
V-1327	Vessel	1	CS	10 m ³
P-63 A/B	Pump	2	C.I.	100 m ³ /hr

CM Tech
A&B LAB
LUTZ

GLP -

HOPR - 8 hrs - Below GLP
HOBREAN - 6 hrs - 2 with motor
(Loborn - 6-8 - 10 top) - 33 DCBH
Colum tank - 88 + HERR

T-1450	Tank	1	CS	3 m3
P-64 A/B	Pumps	2	C.I.	4 m3/hr
P-53 A/B	pump	2	C.I.	175 m3/hr
T-1258	tank	1	C.I.	10 m3
T-6201	Tank	1	MS/SS Claded	70 KL
T-6010	Tank	1	MS/SS Claded	84 KL
P-6213A/B	Pump	2	SS316	2 m ³ /hr @ 52 mlc
T-6213	Tank	1	MS/SS Claded	84 KL
T-6004	Tank	1	SS304	125 KL
P-6007A/B	Tank	1	SS316	20 m ³ /hr @ 30 mlc
T-6105	Tank	1	MS/SS316 Claded	125 KL
T-6106	Tank	1	MS/SS316 Claded	125 KL
P-3065/66	Pump	2	PP	8 m ³ /hr @ 50 mlc
T-6010	Tank	1	MS SS claded	85 KL
T-6001	Tank	1	Aluminium	125 KL
T-6001A/B	Pump	1	Aluminium	3 m ³ /hr @ 35 mlc
T-6003	Tank	1	SS304	125 KL
P-6003A/B	Pump	2	SS316	5 m ³ /hr @ 37 mlc
T-6005	Tank	1	SS304	125 KL
P-3063/64	Pump	2	SS316	30 m ³ /hr @ 40 mlc
T-6211	Tank	1	SS316	25 KL
P-6005	Pump	1	SS316	10 m ³ /hr @ 15 mlc
T-6212	Tank	1	SS316	25 KL
P-6215A/B	Pump	2	SS316	1 m ³ /hr @ 35 mlc
ST-5001	tank	1	SA 516 Gr 70	20 KL
ST-5002	tank	1	SA 516 Gr 70	20 KL
R- 5101	Reactor	1	SA 516 Gr 70	15 KL
R- 5102	Reactor	1	SA 516 Gr 70	15 KL
R- 5103	Reactor	1	SA 516 Gr 70	15 KL
R- 5104	Reactor	1	SA 516 Gr 70	15 KL
T-5101	Tank	1	IS 2062 GR.A	11 KL
MV-5101	Vessel	1	SS 316 claded	3 KL
MV-5102	tank	1	SS Cladded	30 KL
MV-5103	tank	1	MS	14 KL
T-5301	Tank	1	MS	20 KL
T-5301A/B	tank	2	HDPE	5 KL

Hot water TRAVE
B Pump + S Pump
Soft water TRAVE

T-5306	Tank	1	CS	0.6 KL
T-5402	Horizontal Aq. NH3 tank	1	SA 516 Gr 70	10 KL
T-5403	Horizontal Aq. NH3 tank	1	CS	5 KL
R- 5201	Reactor	1	SS Cladded	10 KL
R- 5202	Reactor	1	SS Cladded	10 KL
T-01	Tank	1		1 KL
T-02	Tank	1	MS	1 KL
T-03	Tank	1	MS	1 KL
T-04/05	Neutralisation Pit	2	RCC Tile Lined	12 KL
C-5401	Packed column	1	SA 516 Gr 70	0.7 mtr.dia. X 6 mtr.Packed Height
C-5402	Packed column	1	SA 516 Gr 70	0.6 mtr.dia. X 6 mtr.Packed Height
C-5403	Packed column	1	SA 516 Gr 70	0.4 mtr.dia. X 6 mtr.Packed Height
P-5001	pump	1	SS 316	10 m3/hr@20mlc
P-5301	Pump	1	SS 316	8 m3/hr@25 mlc
P-5302	Pump	1	SS 316	8 m3/hr@25 mlc
P-5303	Pump	1	SS 316	8 m3/hr@25 mlc
P-5401 A	Pump	1	CS	50 m3/hr@22 mlc
P-5401 B	Pump	1	CS	50 m3/hr@22 mlc
P-5402 A	Pump	1	CS	30 m3/hr@22 mlc
P-5402 B	Pump	1	CS	30 m3/hr@22 mlc
P-5403	Pump	1	CS	10 m3/hr@22 mlc
P-5500 A/B	pump	2	CS	8 m3/hr@40 mlc
AR-5201	Agitator	1	SS 316	-
AR-5202	Agitator	1	SS 316	-
E-5101	Heat exchanger	1	SA516 GR.70/ SA179	70 m2
PHE-5301	PHE	1	SS316	1.09 m2
E-5401	PHE	1	SS 316	9.1 m2
E-5402	PHE	1	SS 316	4.49 m2
E-5403	PHE	1	SS 316	0.82 m2
HET-5401	Tube Bundle	1		9 m2
HET-5402	Tube Bundle	1		9 m2
AC-5001	Compressor	1	CS	25.3 m3
ANF-5301	Agitated nutch filter+dryer	1	SS316	6 KL
BL-5301	Blender	1	SS 316	9.5 KL
RVD-5301	Dryer	1	SS 316	7 KL
BL-5401	Centrifugal ID Fan	1	CS	600 m3/hr

EJ-5301	Ejector	1	SS316	
VP-5302	vacuum pump	1	CS	
T-5311	tank	1	HDPE/SS	50 KL
T-5312	tank	1	HDPE/SS	50 KL
T-5306	Tank	1	SS-316	6.5 KL
P-5306/A	pump	2	SS-316	24 m ³ /hr
P-5306/B	pump	2	SS-316	24 m ³ /hr
PCF-01	Pusher centrifuge	1	SS-316L	600 Kg/hr
T-5003	tank	1	SA 516 Gr. 70	1.27 KL
E-5102	Vent Condenser	1	SA 516 Gr. 70	70 m ²
T-5302	Process water tank	1	HDPE	10 KL
T-5303	Process water tank	1	HDPE	10 KL
T-5304	Emergency cooling water tank	1	HDPE	10 KL
T-5305	Emergency cooling water tank	1	HDPE	10 KL
R-3501	Reactor	1	SS316	50 KL
T-3201/2	Tank	1	SS316	33 KL
T-3206	Tank	1	SS316	1.8 KL
T-3209	Tank	1	SS316	0.7 KL
T-3211	Tank	1	CS	6 KL
T-3239	Tank	1	CS	
P-3001/2	PUMP	2	SS316	30 m ³ /hr@15 mlc
P-3076	PUMP	1	PP	
P-3003	PUMP	1	SS316	3 m ³ /hr@45 mlc
PF-3501	FILTER	1	SS 316	1000 Nm ³ /hr
V-3401	VESSEL	1	SS316	1.1 KL
✓ T-3401	Tank	1	SS316	66 KL
✓ T-3402	TANK	1	SS316	1.1 KL
✓ T-3212	TANK	1	SS316	8 KL
✓ T-3213	TANK	1	HDPE	12 KL
P-3007/8	PUMP	2	SS316	20 m ³ /hr@15 mlc
P-3009/10	PUMP	2	PP	16 m ³ /hr@16 mlc
P-3043/44	PUMP	1	SS 316	0.5 m ³ /hr@35 mlc
NF-3401	FILTER	1	SS316	600 mm dia.x 900 mm height
NF-3402	FILTER	1	SS316	600 mm dia.x 900 mm height
T-3246	TANK	1	SS316	0.15 mtr.X 0.3 mtr.
CF-3401	FILTER	1	SS 316	20 m ³ /hr

2018 :- Good of Nirvan
88! → 8279252354 → VIVEK DARYAL
→ Gokulpur

BF-3401	FILTER	1	PP	3 m3/hr
V-3402/3/4/5	VESSEL	4	HDPE	41.5 KL
T-3214/15	TANK	2	HDPE	34 KL
T-3216	TANK	1	HDPE	34 KL
T-3245	TANK	1	SS316	7.9 KL
T-3244	TANK	1	SS316	0.68 KL
P-3075	PUMP	1	SS316	3 m3/hr@45 mlc
T-3221	TANK	1	HDPE	34 KL
P-3011/12/13	PUMP	3	PP	50 m3/hr@15 mlc
P-3015/16/17	TANKS	3	PP	50 m3/hr@15 mlc
R-3201/2/3/4	VESSEL	4	MSGI	52 KL
HE-3201/2/3/4	CONDENSER	4	GRAPHITE	1 m2
T-3234	TANK	1	HDPE	11.5 KL
T-3248	TANK	1	SS316	0.68 KL
P-3004	PUMP	1	SS316	3 m3/hr@45 mlc
SM-3001	Mixer	1	Graphite	DM water flow@5.2 MT/hr,98% H2SO4 flow@8.8 MT/hr
CGF-3218	FILTER	1	PTFE	8 m3/hr
PF-3218	FILTER	1	PTFE	8 m3/hr
R-3401/2/3/4/5/6/7/8	Reactor	8	PP COPOLYMER	41 KL
V-3409/10	Reactor	2	PP	30 KL
R-3205	Reactor	1	HDPE	6 KL
T-3220	TANK	1	HDPE	62 KL
T-3222/23/24/25	TANK	4	PP	28.5 KL
T-3236	TANK	1	SS 316	7 m ³
P-3021/22/23	PUMP	3	CS FEP Lined	50 m3/hr@50 mlc
P-3069/70	PUMP	2	PP	8 m3/hr@13 mlc
P-3029/3030	PUMP	2	PP	8 m3/hr@13 mlc
P-3071/72	PUMP	2	SS 316	8 m3/hr@15 mlc
F 3001	FILTER	1	PP	50 m3/hr
PTS-3001	POWDER TRANSFER SYSTEM	1	SS 316	600 Kg/batch
CF-3001/2/3/4	PEELER CENTRIFUGE	4	SS 304	48"
T-3226	TANK	1	HDPE	40 KL

T-3237	MAN PIT FOR CENTRIFUGE	1	RCC TILE LINED	0.6 mtr.x 0.6 mtr. X 0.3 mtr.
T-3238	SALT SOLUTION PIT	1	RCC TILE LINED	2.5 mtr.x 2 mtr. X 1 mtr.
T-3227	TANK	2	CS-RL	295 Lit.
BF-3401/2	BAG FILTER	2	MS-PP	3 m3/hr
P-3047/48	PUMP	2	PP	15 m3/hr@46 mlc
SC-3001/02	SCREW CONVEYOR	2	SS 316	11 MT/hr
V-3406	VESSEL	1	SS316	44 KL
T-3228	TANK	1	SS316	9.5 KL
T-3301	RECIEVER	1	SS316	12.2 KL
T-3230	TANK	1	SS316	1.66 KL
C-3101	COLUMN	1	SS 316	1220 mm dia x 23 mtr.height (12 mtr.packed height)
HE-3205	CONDENSER	1	SS 316	47.6 m2
HE-3206	CONDENSER	1	SS 316	6.2 m2
HE-3210	CONDENSER	1	SS 316	1.7 m2
HE-3301	REBOILER	1	SS 316	39.5 m2
P-3031/3032	PUMP	2	SS316	3.75 m3/hr@20 mlc
P-3033/3034	PUMP	2	SS316	3.75 m3/hr@20 mlc
V-3407	VESSEL	1	HDPE	44 KL
T-3229	TANK	1	HDPE	4 KL
T-3101	TANK	1	SS 316	32 KL
V-3408	VESSEL	1	MS with SS claded	5 KL
C-3102	COLUMN	1	SS 316	600 mm dia.x 15.9 mtr.height (12 mtr.packed height)
HE-3207	CONDENSER	1	SS 316	8.6 m2
HE-3208	CONDENSER	1	SS 316	2.6 m2
✓ HE-3211	Heat Exchanger	1	SS 316	1.7 m2
✓ HE-3302	REBOILER	1	SS 316	19.74 m2
P-3037	PUMP	1	PP	4 m3/hr@15 mlc
P-3045/46	PUMP	2	SS 316	15 m3/hr@12 mlc
P-3051	PUMP	1	CS	10 m3/hr@15 mlc
EJ-3001	COLUMN	1	SS 316	10 mm Hg
T-3232	Tank	1	CS	0.5 KL
T-3247	Tank	1	SS 316	
BM-7001/02/03	BAGGING SYSTEM (CONSISTS OF JUMBO, OPEN MOUTH BAGS & DRUMS)	3	SS 316	1300 Kgs/hr with 10% moisture content

SCB-3001	SCRUBBER COLUMN WITH INTERNALS	1	SHELL OF FRVE & PP Pall Rings	400 mm dia.x 12 mtr.packed height
T-3235	Tank	1	FRVE	11.1 KL
B-3001/2	BLOWER	2	FRVE	600 Nm3/hr@300 mmWC
P-3049/50	PUMPS	2	PVDF / UHMWPE	10 m3/hr@16 mlc
T-6103	TANK	1	SS 316 Cladded	159 KL
T-6105/06	TANK	2	SS316 Cladded	70 KL
P-3053	PUMPS	1	CS	3 m3/hr@50 mlc
P-3057/58	PUMP	2	PP	15 m3/hr@50 mlc
P-3059/60	PUMP	2	CS	15 m3/hr@50 mlc
P-3061/62	PUMP	2	CS	5 m3/hr@50 mlc
P-3063/64	PUMP	2	SS 316	30 m3/hr@40 mlc
P-3065/66	PUMP	2	PP	8 m3/hr@50 mlc
CGF-3201	FILTER	1	SS 316	3 m3/hr
PF-3201	FILTER	1	SS 316	3 m3/hr
PF-3203	FILTER	1	SS 316	30 m3/hr
PF-3207	FILTER	1	SS 304	15 m3/hr
CGF-3216	FILTER	1	PP	15 m3/hr
PF-3216	FILTER	1	PP	15 m3/hr
SC 3005	SCREW CONVEYOR	1	SS 316L	4000 Kg/hr
HP 3001	HOPPER	1	MS FRP COATED	4000 Kg/hr
HP 3002	LOSS IN WEIGHT HOPPER WITH SCREW FEEDER	1	SS 316L	3000 Kg/hr
A 3001	SALT CHARGING SYSTEM (SALT SLITTING MACHINE)	1	SS 316L	80 Bags/hr
✓ CHW-7001	Water Chiller	1		1800 TR
✓ CHW-7002/7003	Water chiller	2		320 TR
T-7001	Tank	1	CS	122.5 KL
P-7011/12/13	Water pumps	3	CI	328 m3/hr@20 mlc
P-7014/15	Water pumps	2	CI	575 m3/hr@30 mlc
P-7017/18	water pumps	2	CI	120 m3/hr@45 mlc
P-7016	water pumps	1	CI	120 m3/hr@15 mlc
CT-7001	cooling tower	3	FRP	868 TR
P-7001	pumps	1	CI	500 m3/hr@20 mlc
P-7002	pumps	1	CI	500 m3/hr@40 mlc

[Handwritten signature]

P-7003/04	pumps	2	CI	500 m3/hr@45 mlc
✓ CT-7002/03/04/05/06/07	Cooling tower	6 ✓	FRP	2650 TR
✓ CDS-01	Chemical Dosing System	1	PP/FRP	
P-7005/06/07/08	pumps	4	CI	533 m3/hr@25 mlc
✓ Boiler-1	Coal fired steam boiler	1	ASTM 515/516 Gr.70 & BS 3059 ERW	Superheated steam generation@12 TPH & @ 32 Kg/cm ² g pressure
TC-1/2/3	Thermocompressor System	3	CS	3 TPH
DSH-1/2/3	Desuperheating system for steam	3	CS	3 TPH
✓ Boiler-2	Oil/Natural gas fired smoke tube steam boiler	1	ASTM 515/516 Gr.70 & BS 3059 ERW	Dry saturated steam generation@5 TPH & @ 24 Kg/cm ² g pressure
✓ Boiler-3	Oil/Natural gas fired smoke tube steam boiler	1	ASTM 515/516 Gr.70 & BS 3059 ERW	Dry saturated steam generation@ 12 TPH & @ 17.5 Kg/cm ² g pressure
✓ CDS-02	Chemical Dosing System for Boiler	1	PP/FRP & SS304	
✓ Air Compressor-1/2	Air Compressor	2	CS	191 cfm @ 7.5 Kg/cm ² g
✓ Air Compressor-3/4	Air Compressor	2	CS	229 cfm @ 7.5 Kg/cm ² g
✓ Air Dryer-1	Heatless Air dryer ✓	1	CS	340 cfm @ -40°C dew point & @ 7.5 Kg/cm ² g
✓ Air Dryer-2/3	Heatless Air dryer ✓	2	CS	229 cfm @ -40°C dew point & @ 7.5 Kg/cm ² g
Nitrogen Plant-1	Nitrogen generation Plant	1	<u>CS</u>	25 CFM of 99.9% Purity
✓ AR-1/2	Air receivers ✓	2	CS	1 KL
✓ AR-3/4/5	Air receivers ✓	3	CS	6 KL
NR-1	Nitrogen receiver	1	CS	6 KL
✓ SP-7012/13/14/15	Ogdon Pump	4	CS	2 MT/hr
DM Wtaer Plant-1	DM water generation plant	1	FRVE & MS-rubber lined	200 m3/day
Soft Water Plant-1	Soft water generation plant	1	FRVE & MS-rubber lined	200 m3/day

T-7101	Tank	1	SS304	84 KL
T -7102	tank	1	SS304	84 KL
DMT-01	Tank	1	SS304	20 KL
SM-7001	Static mixer	1	SS 316	18 m ³ /hr of water and 2.4 t/hr of steam.
P-7021/22	pump	2	SS316	50 m ³ /hr@38 mlc
P-7023	pump	1	SS316	50 m ³ /hr@27 mlc
P-7024/25	pump	2	SS316	50 m ³ /hr@50 mlc
P-7026	pump	1	SS316	50 m ³ /hr@30 mlc
P-7027	pump	1	SS316	50 m ³ /hr@20 mlc
PRS-7002	Pressure Reducing Station for Steam	1		
PF-7001	filter	1	SS 316	35 Nm ³ /hr
PF-7102	filter	1	SS 304	50 m ³ /hr
PF-3205	filter	1	PP	12 m ³ /hr
	Fire Hydrant system with Jockey Pump & Stand by pump with diesel engine back up	1	CS	Jockey Pump-10.8 m ³ /hr@70 MWC & Stand by Pump-2850 LPM@70 MWC

T-14 - 8/2/24

GOSAM! :-

- SHED.

Coal Boiler -

CONVERT + GASifier.

M.S..

D.G. - 1+1+1

7.5 EVN

DCBH

PROFESSOR - RYBAT 33 DCBH

OIL BOILER - 5 2/2

33 KVA

4) Salt Plant Building

It is a G.A. Sheet roof shed with a height of about 20 m. or so. It is a Galvo Aluminum (G.A.) Sheet roof shed with R.S.J. I Section 'A' type trusses and R.S.J. stanchions with R.C.C. footings. There are 8.00 m. brick masonry walls with plaster and thereafter G.A. Sheet cladding. There are first and second floors with m.s. plates, which are at a height of 8.00 m. & 14.25 m. respectively. The built-up area is 3 Nos. X 14.50 m X 13.40m = 532.90 Sq.mt.

5) Store

It is a R.C.C. framed structure with R.C.C. roof slab, brick masonry walls with plaster, c.c. flooring, m.s. plate doors and m.s. windows etc. As informed, the terrace slab is designed to take the machinery loads also. The floor height is about 7.00 m. or so. The built-up area is 24.33 m X 20.00 m = 486.60 Sq.mt.

6) 3,3 D.C.B. Plant

It is a structural shed with R.S.J. stanchions, R.C.C. footings, structural steel floors (totally 11 Nos.), R.C.C. flooring. The total height is partly 34.00 m. and partly 26 m. The total built up area is 5 Nos. X 6.77 m X 27.15 m + 6 Nos. X 10.30 m. X 31.60 m. = 919.03 Sq.mt. + 1952.88 Sq.mt. = 2871.91 Sq.mt.

7) Main Plant

It is partly with R.S.J. structural shed and partly with R.C.C. structure. There are G.A. sheet louvers, R.S.J. stanchions with 'A' type trusses, R.C.C. flooring. It is a structure with ground and five upper floors. The total built up area is 6 Nos. X 25.00 m X 18.83 = 2824.50 Sq.mt.

8) Distillation Column

It is similar to the D.C.B. Plant. It is with ground and five upper floors. The total built up area is 6 Nos. X 6.25 m X 12.75 m = 478.12 Sq.mt.

9) Tank Farm No. 1

There are nearly 25 No. of storage tanks with a capacity of 250 M.T. each. There is Heavy Duty foundation for such a huge capacity tanks. The built up area is 50.30 m. X 24.70 m. = 1242.41 Sq.mt.

The combined plot is fairly leveled with earth filling. The open spaces around the buildings are paved with heavy duty R.C.C. roads. The plot is bounded by rubble masonry compound wall with a height of about 2.00 m. to 2.50 m. or so. There are two heavy duty m. s. compound gates and a wicket gate.

B) Building

The buildings plans were approved by the MIDC Authorities under no. DE/TW/410 and DE/TW/407 vide Letter dated 20.02.2009.

There are the following structures in the plot. All the structures are constructed after 2006. They are properly maintained and are in very good condition.

1) Coal Yard

It is a Galvo Aluminum (G.A.) Sheet roof shed with R.S.J. I Section 'A' type trusses and R.S.J. stanchions with R.C.C. columns and footings. There are 1.5 m. brick masonry walls with plaster and thereafter G.A. Sheet cladding. The height is about 4.5 m. or so above the ground level. The plinth is about 2.5 m. below the ground level. The built-up area is 9.60 m. X 28.52 m. = 273.79 Sq.mt.

2) D.G. Set Building

It is a R.C.C. framed structure with R.C.C. roof slab, brick masonry walls with plaster, G.A. Sheet cladding, R.C.C. flooring. As informed, the terrace slab is designed to take the machinery loads also. The floor height is about 7.00 m. or so. The built-up area is 18.70 m X 9.30 m = 170.81 Sq.mt.

3) Office

It was constructed in 2006 or so as informed. It is a R.C.C. framed structure with ground and two upper floors with brick masonry walls with plaster, teakwood doors, aluminum windows, m.m. tiles flooring. The floor height is about 3.70 m. or so. The built-up area is 3 Nos. X 20.85 m X 15.30 m. = 957.02 Sq.mt.

Western Railway Line of Mumbai Suburban Division (Mumbai Suburban Railway). Tarapur can be reached from Boisar, the nearest Railway Station, which is about 3 Kms. to 4 Kms. away. It is 20 Kms. off Mumbai - Ahmedabad National Highway NH-8. All the civic amenities are available within a reasonable reach. S.T buses, rickshaws and private cars are the modes of transport. The basic infrastructure like water supply, electricity and telecommunication, sewage and drainage systems, etc. is available.

6. DESCRIPTION OF PROPERTY

A) Land with Site Development

The concern has acquired the cited plots bearing Nos. T-13 & T-14. The details are as under:-

As per the agreement's dated 01.04.2013 & 08.06.1993, the plot areas were 3,824 Sq.mt. & 10,024 Sq.mt. respectively. Thus, the total plot area is 13,848 Sq.mt. The plots were bounded as under:

Sr. No.	Direction	Boundaries	Plot Area
1.			
	Plot No. T-13		3,824.00 Sq.mt.
	North	Plot No T-14	
	South	Plot No. T-12 & R/W 20 mtrs.	
	East	Plot No K-58/1, K-58/2	
	West	Plot No T-14 & R/W 20 mtrs.	
2.			
	Plot No. T-14		10,024 Sq.mt.
	North	Plot No K-56	
	South	Estate Road	
	East	Plot No. T-13	
	West	Estate Road	

The Plot No. T-14 was originally purchased on 08.06.1993 in the name of M/s. Sriman Organic Chemical Industries Ltd. As informed by the clients, the name was subsequently changed to M/s. Seya Industries Ltd.

Both the plots are the leasehold plots with a lease period of 95 years starting from 01.02.1991.

5. LOCATION OF PROPERTY

The cited assets are located in MIDC Industrial Area, Tarapur.

About MIDC:

MIDC refers to Maharashtra Industrial Development Corporation. It is the largest and the oldest industrial development corporation in the country. MIDC undertakes land acquisition to make it available for industrial development by providing infrastructure like water, power, roads, telecommunications, gas, effluent treatment plants, sewerage treatment plants, hazardous waste management plants, etc. MIDC is a Special Planning Authority for industrial development in Maharashtra. It provides hassle-free clearances for all developmental projects. It provides land on 95 years lease term at a nominal lease rent. Such land acquired from the MIDC is transferable, and can also be surrendered or mortgaged within the lease period. There are 229 functioning industrial areas in MIDC covering over 60,000 Hectares of land spread all over the state of Maharashtra. The MIDC areas in Tarapur & Turbhe rate higher in the preference due to their proximity to Mumbai.

About Tarapur

Tarapur also houses two huge industrial estates (Maharashtra Industrial Development Corporation, Tarapur Industrial Estate and Additional Tarapur Industrial Estate), which include bulk drug manufacturing units, specialty chemical manufacturing units, steel plants and a few textile plants. Some of the prominent industrial units are Lupin (world's largest manufacturer of anti-TB drug rifampicin), Tata Steel, Jindal Steel, Aarti Drugs, Strides Arcolab, Camlin, S. D. Fine Chemicals, Siyaram, AceeleneSulphings, Pantaloon, Dicitex Decor, Sarex, Supertex, Sarex Overseas, Vasudhara Dairy (Amul Ice Creams), Vadlilal Dairy, Viraj, LavinoKapur, Ganesh Benzoplast, A.M. Todd Company, Mukat Tanks & Vessels, Maharashtra Organo Metallic Catalysts (P) Ltd., Galaxy Surfactants, New Alliance Dye Chem Pvt. Ltd., and Duratex Silk Mills Limited. It has fairly developed as a residential area due to the growing industries.

Tarapur is a census town in Thane District of Maharashtra State. It is an industrial town located about 45 Kms. of so to the north of Virar, on the

⇒ D-16 :-

PFD

Plot:- 156367

N - VILLAGE BOUNDARY. OPEN PLOT PASTAL VILLAGE

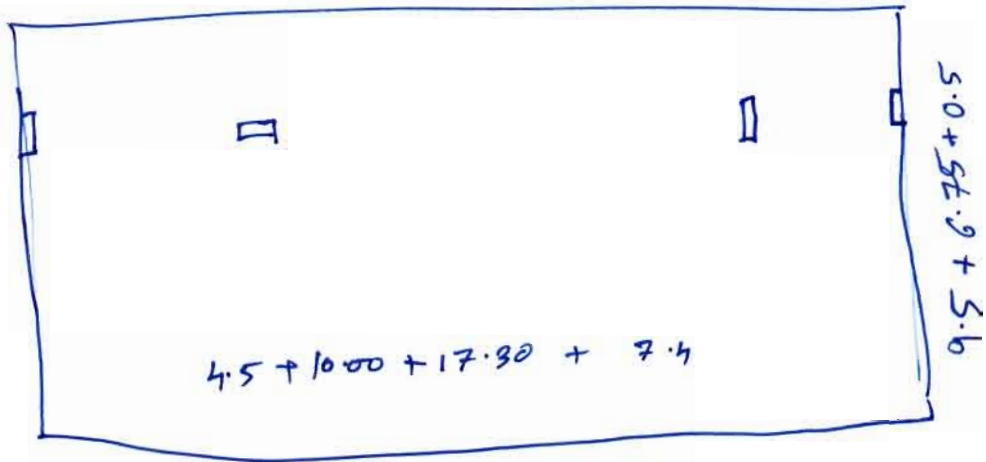
S - D-15-B

E - ROAD & BHAGIARIYA.

W - ROAD & SALWADA VILLAGE

⇒ HASMULAH PATEL - SECURITY SUPERVISOR - → AGNYA SECURITY.

RIGHT SIDE ⇒ ADMIN BLOCK



G1 + 1 (PART DOUBLE HT) + 2F + TOMACOT

ONLY R.C.C. COMPLETE

G1 - PART WALL = 4M - HT

F1 = LINE INFRASTRUCTURE = 4M

2F = R.C.C. = 4M

⇒ R.C.C. Local YARD

⇒ Power PLANT PARTLY ASSEMBLED & REACTOR PONDING

⇒ COOLING TOWER.

⇒ 16 X 3 = grid = M.S. STRUCTURE

= 18 X 8 = grid = M.S. STRUCTURE.

COMPOUND wall STONE = 8'-0" HT

REACTOR = SS-1+1+1

MS-1+1+1+1

R.C.C. PILING

Sr. No.	Description	Area in Sq.mt.		
	18) DM Plant	79.80		
	19) Chlorine Shed	420.25		
	20) MCC Room	117.72		
	21) MCB Plant	792.00		
	22) Tank Farm No. - 3	187.00		
	24) Boller House	1232.64		
	25)U/GReservoirs/Tanks	5,25,000 Ltr.		
			Total	
			Say	

		Rs.

CRANE - CHANNEL - ELECTRO MECH.

Column - 2 Nos

TANK - 1 Nos

M.S. PIPE - LOT

Small S.S. REACTOR. → 6 Nos

SEWAGE CABIN

G + 1

G.F. = R.C.C + BW + PLASTER (PANNERS)

F.F. = " " " (2 MOTOR)

Container office - 1 + 1 + 1

M.S. - 6 - REACTOR

S.S. - 2 - REACTOR

S.S. - 2 - REACTOR

8. CALCULATIONS

Sr. No.	Description	Area in Sq.mt.		
A)	Land with Site Development	13848		
B)	Building			
	1) Coal Yard	273.79		
	2) D.G. Set Building	117.81		
	3) Office	957.02		
	4) Salt Plant	582.90		
	5) Store	486.60		
	6) 3,3 DCB Plant	2871.91		
	7) Main Plant	2824.50		
	8) Distillation Column	478.12		
	9) Tank Farm No. - 1	1242.41		
	10) Staircase	275.00		
	11) PNA Plant	2822.34		
	12) Lime Godown	88.00		
	13) Fire House	70.00		
	14) Tank Farm No. - 2	192.00		
	15) Tank Shed	255.00		
	16) Nitrogen Plant	30.00		
	17) Utility Building	1060.00		

4 Nos. (floors) X 12.00 m. X 24.18 m. + 6.00 m. X 12.00 m. = 1160.64
Sq.mt. + 72.00 Sq.mt. = 1232.64 Sq.mt.

24) U.G. Reservoirs

There are two underground R.C.C. reservoirs with a total capacity of 5,25,000 Ltr.

In addition to the above, there are plumbing, sanitation, water supply, over head tank & drainage arrangements etc.

7. APPROACH TO VALUATION

Market Value is the warranted price expressed in terms of money which, a property is estimated to bring at any given time and place where buyers and sellers act without compulsion and with full knowledge of all the uses to which the property is adopted and for which it is capable of being used. The warranted price is further contingent on the seller's ability to convey title with all rights inherent in the property and allowing sufficient time for transaction to mature normally under cash or cash equivalent terms of sale.

To clarify further while ascertaining the Fair Market Value the property is not to be valued merely by reference to uses to which it is being used, at the time, at which its value has to be determined, but also by reference to the uses to which it is reasonably capable of being used in future. Care should be taken to see that such probabilities and potentialities (future utilities) are immediate or reasonably near in future and are capable.

17) Utility Building

It is a R.C.C. framed structure with R.C.C. roof slab, brick masonry walls with plaster, aluminum windows and doors, vitrified tiles flooring etc. It is with ground and three upper floors with floor heights of 5 m., 4 m., 4 m., 2.4 m. respectively. The built up area is 4 Nos. (floors) X 13.25 m. X 20.00 m. = 1060.00 Sq.mt.

18) D.M. Plant

It is a G.A. sheet roof shed with R.S.J. I section purlins, R.C.C. columns, hollow block walls, c.c. flooring etc. The height is about 6.00 m. or so. The built up area is 14.00 m. X 5.70 m. = 79.80 Sq.mt.

19) Chlorine Tank Shed

It is an open shed without walls and is with A.C. sheet roof, M.S. trusses, R.C.C. columns, 2 M.T. gantry, plinth with height of 1.2 m. R.C.C. flooring etc. The height upto tie level of trusses is about 5 m. or so. The built up area is 20.50 m. X 20.50 m. = 420.25 Sq.mt.

20) M.C.C. Room

It is a ground floor structure with R.C.C. roof slab, columns, beams, brick masonry walls with plaster, Industrial c.c. flooring etc. The floor height is about 5 m. or so. The built up area is 10.90 m. X 10.80 m. = 117.72 Sq.mt.

21) M.C.B. Plant

It is a R.C.C. framed structure with ground and three upper floors with a total height of 20 m. The floor height is about 5 m. or so on each floor. The built up area is 4 Nos. (floors) X 9.00 m. X 22.00 m. = 792.00 Sq.mt.

22) Tank Farm No. 3

There are 14 No. of storage tanks with a capacity of 150 M.T. each. There is Heavy Duty foundation for such a huge capacity tanks. The built up area is 8.50 m. X 22.00 m. = 187.00 Sq.mt.

23) Boiler House

It is a R.C.C. framed structure with ground and three upper floors with a G.A. sheet roof shed on the third floor. The R.C.C. floor slabs are at a height of 2.50 m., 5 m., 8.50 m., 12 m. The total built up area is

17) Utility Building

It is a R.C.C. framed structure with R.C.C. roof slab, brick masonry

walls with plaster, aluminium windows and doors, vitrified tiles flooring

etc. It is with ground and three upper floors with floor heights of 5 m,

4 m, 4 m, 2.4 m, respectively. The built up area is 4 Nos. (floors) X

13.25 m. X 20.00 m. = 1060.00 Sq.mt.

18) D.M. Plant

It is a G.A. sheet roof shed with R.S.J. I section purlins, R.C.C.

etc.

10) Staircases

There are 4 No. of R.C.C. staircases for the various plant buildings, leading up to a height of 25 m. with ground and fourth floor. The total area is 4 Nos. (staircases) x 5 Nos.(floors) X 2.75 m. X 5.00 m. = 275.00 Sq.mt.

11) PNA Plant

It is a R.C.C. framed structure with ground and six floors at different levels with a G.A. sheet roof shed on the sixth floor. The height at the sixth floor is 30 m. The total built up area is 7 Nos. X 11.93 m. X 33.80 m = 2822.34 Sq.mt.

12) Line Godown

It is an A.C. sheet roof shed with brick masonry wall with plaster, m.s. grill to windows, teakwood doors, m.s. angle purlins etc. The total built up area is 11.00 m X 8.00 m = 88.00 Sq.mt.

13) Fire House

It is a R.C.C. framed structure with R.C.C. roof slab, brick masonry walls with plaster. The floor height is about 4.20 m. or so. The total built up area is 10.00 m X 7.00 m = 70.00 Sq.mt.

14) Tank Farm No. 2

There are 2 No. of storage tanks with a capacity of 100 M.T. each. There is Heavy Duty foundation for such a huge capacity tanks. The built up area is 16.00 m. X 12.00 m. = 192.00 Sq.mt.

15) Tank Shed

It is a G.A. shed roof with m.s. trusses, R.C.C. columns, brick masonry walls with plaster along with R.C.C. hollow blocks, c.c. flooring etc. The height is about 9.00 m. or so. There is a platform with an area of 12.00 m. X 6.50. m = 70.00 Sq. mt. The built up area is 12.00 m. X 21.25 m. = 255.00 Sq.mt.

16) Nitrogen Plant

It is a Lean-to-Roof shed with G.A. sheet roof and with cladding above 2.00 m., c.c. flooring etc. The height is about 6.00 m. or so. The built up area is 6.00 m. X 5.00 m. = 30.00 Sq.mt.

महाराष्ट्र शासन
औद्योगिक सुरक्षा व आरोग्य संचालनालय

Office of the Joint Director, Industrial Safety & Health, 1st Floor, Mangesh Bhuvan, Ambadi Road, Vasai (W), Dist-Palghar,
401207.

Ref No: 119000000014547

दिनांक : २७/०३/२०१८

प्रति

भोगवटादार / व्यवस्थापक,
Seya Industries Limited,
Seya industries Limited, T-13,14 K-58/2, MIDC Road,
Near Lupin Limited, MIDC Industrial Area, Tarapur, Boisar,
990-401506

विषय : कारखाने अधिनियम, १९४८ खाली कारखाने नकाशे मंजूरीबाबत, इमारत त्याची बांधणी / कारखान्याची पुनर्रचना किंवा वाढीव बांधकाम.

संदर्भ : आपले पत्र क्र. १०००१३१८१८२१

दिनांक : २६/०३/२०१८

उपरोक्त विषयाच्या संदर्भात नकाशाच्या दोन प्रतीपैकी एक प्रत मंजूर करून खालील अटीनुसार देण्यात येत आहे

अटी

- 1 This approval is in continuation with the previous approval letter no. PLN/80/2012/PTU/3245/Vasai DATED 27/04/2012 and extend to the changes marked in red colour
- 2 The area shown as store shall be used for said purpose only
- 3 Hazop study shall be carried out & report there of shall be complied with
- 4 On-site emergency plan, based on maximum creditable loss scenario shall be prepared
- 5 All electrical equipments wherever highly inflammable liquids are handled/used/stored shall be standard flameproof in contraction
- 6 Fire fighting arrangement shall be provided in accordance with provisions of Rule 71-B of Maharashtra Factories Rules,1963
- 7 Structural Stability Certificate shall be obtained in form No.1-A as per Rule 3-A of Maharashtra Factories Rules,1963
- 8 Safety Audit shall be carried out as per IS 14489:1998

Signature valid

Digitally Signed By Surendra Palrao Dhawad
(Industrial Safety And Health, Vasai)
Date : 27-Mar-2018 17:55:15 IST

आपला विश्वासू

सह संचालक

औद्योगिक सुरक्षा व आरोग्य,पालघर

सहपत्र -



डाक नोंद/पत्र पोच देणे

जा.क्र.नकाशे/८०/२०१२/पुतुड ३२०५ वसई.
औद्योगिक सुरक्षा व आरोग्य संचालनालय,
पहिला माळ, मंगेश भुवन अबाडी, वसई प. जि. ठाणे
दिनांक 27 APR 2012

पति

THE OCCUPIER,
M/S. SEVA INDUSTRIES, LTD.,
PLOT NO. T-13/14 & K-58/2 M. I. D. C.,
TARAPUR, DIST. - THANE


विषय :- कारखाने अधिनियम १९४८ अन्तर्गत कारखाने नकाशे मंजूरी बाबत कारखान्याची
इनामिद/त्याची बांधणी/ कारखान्याची पुनर्रचना किंवा वाढीव बांधकाम

महोदय,

उपरोक्त विषयासंदर्भात अनुसर आपले पत्र/नमुना क्र.१ व प्रस्तावली क्रमांक - दिनांक ३०/०३/२०१२
सेजी आपणास कळविण्यात येते की, आपण सादर केलेले नकाशे खालील नमूद केलेल्या अटीवर मंजूर करण्यात येत असून, मंजूर
नकाशे या पत्रा सोबत पाठविण्यात येत आहे.

CONDITIONS

1. This approved is in continuation to previous approval granted by this office vide letter No. PLN/43/94/SVT/2139/Thane, dated 27/04/1994 and extends to area marked in red only.
2. All electrical fittings in DCBH plant where hydrogen gas is handled shall be of standard flameproof type.
3. On PNA plant suitable ammonia scrubber shall be provided & maintained.
4. Detailed Hazop Study shall be got done on the both new plants & reports shall be generated.
a) Recommendations of study shall be implemented if any.
5. Fire hydrant system provision shall be extended to new plants.
6. Provisions of Rule 114 schedule XI, schedule XXII (4) shall be fully complied.
7. Necessary consent from MPCB shall be obtained.
8. Concentration of Ammonia & PNA shall be monitored.
9. Hydrogen leak detectors with audible alarm set at 50% L.E.L. shall be provided.
10. Suitable PPE shall be provided all workers.



(पं. तु. उमरे)

सहसंचालक,

औद्योगिक सुरक्षा व आरोग्य,
वसई

सोबत :- सहपत्रे

टिप :- या विषयाबाबत पुढील पत्रव्यवहार करताना आपण वरील नमूद क्रमांकाचा नेहमी संदर्भ म्हणून वापर करावा

जा.क्र. नकाशे/ ८०/२०१२/चपुपा/

वसई दिनांक / २०१२ मंजूर झालेल्या नकाशाच्या कार्यालयीन

प्रती संपूर्ण प्रपत्रसमूह, उपसंचालक/सहायक संचालक, औद्योगिक सुरक्षा व आरोग्य, वसई यांना माहितीसाठी व पुढील कार्याधीकरिता रवाना

Ref No: 11900000029076

दिनांक : 19/09/2022

प्रति

भोगवटादार / व्यवस्थापक,

SEYA INDUSTRIES LTD
Plot No. T 13/14, K-58/2, T- 13/14, K-58/2, T-13/14,
K-58/2, MIDC TARAPUR, Near Lupin
Ltd, MIDC, Palghar, Palghar, MAHARASHTRA, 401506

विषय: कारखाने अधिनियम, १९४८ खाली कारखाने नकाशे मंजुरीबाबत, इमारत त्याची बांधणी/कारखान्याची पुनर्रचना किंवा वाढीव बांधकाम.

संदर्भ: आपले पत्र क्र. १०००६२३१२२२१

दिनांक : ०१/०९/२०२२

उपरोक्त विषयाच्या संदर्भात नकाशाच्या दोन प्रतीपैकी एक प्रत मंजूर करून खालील अटीनुसार देण्यात येत आहे.

अटी

- 1 This approval is in continuation of the previous approval vide Ref No PLN/80/2012/PTU/3245/VASAI dated 27/04/2012 and extends to changes in machinery layout marked in PINK colour and deletion marked in YELLOW colour only
- 2 Certificate of Stability shall be obtained in form No.1-A and copy shall be submitted to office as per Rule 3-A of Maharashtra Factories Rules, 1963
- 3 Fire fighting arrangement shall be provided in accordance with provisions of Rule 71-B of Maharashtra Factories Rules, 1963
- 4 All electrical equipments wherever highly inflammable liquids are handled/used/stored shall be standard flameproof in construction.
- 5 On site emergency plan, based on maximum credible loss scenario shall be prepared and copy of the same shall be submitted to office
- 6 Risk Analysis/Assessment shall be carried out and along with compliance report shall be submitted to office
- 7 HAZOP study shall be carried out and along with compliance report shall be submitted to office.
- 8 Provisions of Schedule XX prescribed under Rule 114 of Maharashtra Factories Rules, 1963 in use of benzene in manufacturing process shall be complied with

Signature valid
Digitally Signed by
Naresh Deo Raj
Date: 19/09/2022 8:38:45 AM

आपला विश्वासू

सह संचालक

औद्योगिक सुरक्षा व आरोग्य, पालघर

Form 1

[see rules 3,5,8,11 and 14]

✓ Application for permission to construct a new factory, to extend factory or take into use any building as a factory /

Application for Registration and Notice of occupation specified in sections 6 and 7 and for Grant of licence / Renewal of licence of a factory

1 Full name and address of factory	SEYA INDUSTRIES LTD Plot No. T 13/14, K-58/2, MIDC TARAPUR, Near Lupin Ltd, MIDC, MAHARASHTRA, Palghar, Palghar, pam, 401506						
Telephone Number	09225122282						
Fax Number							
E-Mail	seya.boisar@gmail.com						
2 If already registered, month and year of registration	01/2017						
3 Licence number, if granted	0564						
4 Reference number and date of latest approval of the plants by the State Government / Chief Inspector of Factories / Joint Chief Inspector of Factories / Deputy Chief Inspector Of Factories.	PLN/80/2012/PTU/3245/VASAI 27/04/2012						
5 A flow chart of the manufacturing process supplemented by a brief description of the process in its various stages, list of the raw materials used, intermediate products, including emission of toxic gases, etc., finished products by-products, their quantities, method of storage and handling, loading and transport and details of the arrangements for the disposal of trade waste and effluents, the likely hazards and the method to control or eliminate them. (Attach separate sheet if required)	As per attachment						
6 Particulars of plants to be installed	Auto Clave reactor, Vessel						
7 The period for which licence or renewal of licence is applied for (not exceeding ten years)	-						
8 Maximum number of workers to be employed on any one day during the year	<table><thead><tr><th>Female</th><th>Male</th><th>Total</th></tr></thead><tbody><tr><td>0</td><td>140</td><td>140</td></tr></tbody></table>	Female	Male	Total	0	140	140
Female	Male	Total					
0	140	140					
9 Installed power in H.P	2000						
10 Full name and residential address of Occupier Director/Partner/Proprietor	MR ASHOK G RAJANI B/12, Keshavdham co op HSG Society Ltd, Palghar Road, Near Bank of India, Boisar, Palghar, Palghar, MAHARASHTRA, 401501						
Date of Birth	08/04/1955						
Nationality	Indian						
Mobile No and E-Mail	9225140038 seya.boisar@gmail.com						
Signature of Occupier							
11 Full name and residential address of Manager	MR SIVAPRASADA RAO BUDDI B 102 Building No 9 MAD COMPLEX, Palghar Road, Near Jain Mandir, Yeshwant Shrushti, 552387, Palghar, Palghar, MAHARASHTRA, 401501						
Date of Birth	01/07/1958						
Nationality	Indian						
Mobile No and E-Mail	9673031758 bsprao@seya.in						
Signature of Manager							
12 Amount of fees Rupees 57.20 paid by online vide order no 100062312221 dated the 02/09/2022.							
Old Licence No:	Old Date of Register:						
Old Expire Date:	Type of Factory: Hazardous Factory						
Category of Factory: Public	Class of Factory: General Factory						
Section Under FA: 2(m)(i)	Type of Occupier:						

SEYA INDUSTRIES LIMITED

Plot No. T-13/14 & K-58/2, MIDC Industrial Area, Tarapur, Boisar, Tal. & District – Palghar, Maharashtra 401506
Email seya1.boisar@gmail.com

NA PLANT-MANUFACTURING PROCESS

MCB prepared by Chlorination of Benzene is further processed to produce Nitro Chloro benzene (NCB). Nitro Aniline prepared in Autoclave from Nitro Chloro Benzene & 30% Ammonia Liquor is charged in a autoclave. The reaction mass is heated up by MPS steam up to temp. 152°C . Then by exothermic heat the automatically raised up to 182°C . Maintain the temp. at 182°C at 35 Kg/cm²(g) pressure up to 12 hrs. After that the NA is sent via agitated Nutch filter while Ammonia goes to scrubbing Unit via a condenser and again reused in process. The Nitro Aniline from the agitated Nutch Filter is taken out & purified in a Carbon treatment vessel & then it is cooled in other vessel. Then it is centrifuged in peeler Centrifuge and packed in sealed bags.

While the mother liquor from the Nutch Filter is reacted with Calcium oxide in batch reactor where calcium chloride is formed, passed through a simple Nutch filter system. Then it is sent to a Chlorine Scrubber cum bleaching system and then spray dried and packed in sealed bags.

For Seya Industries Limited

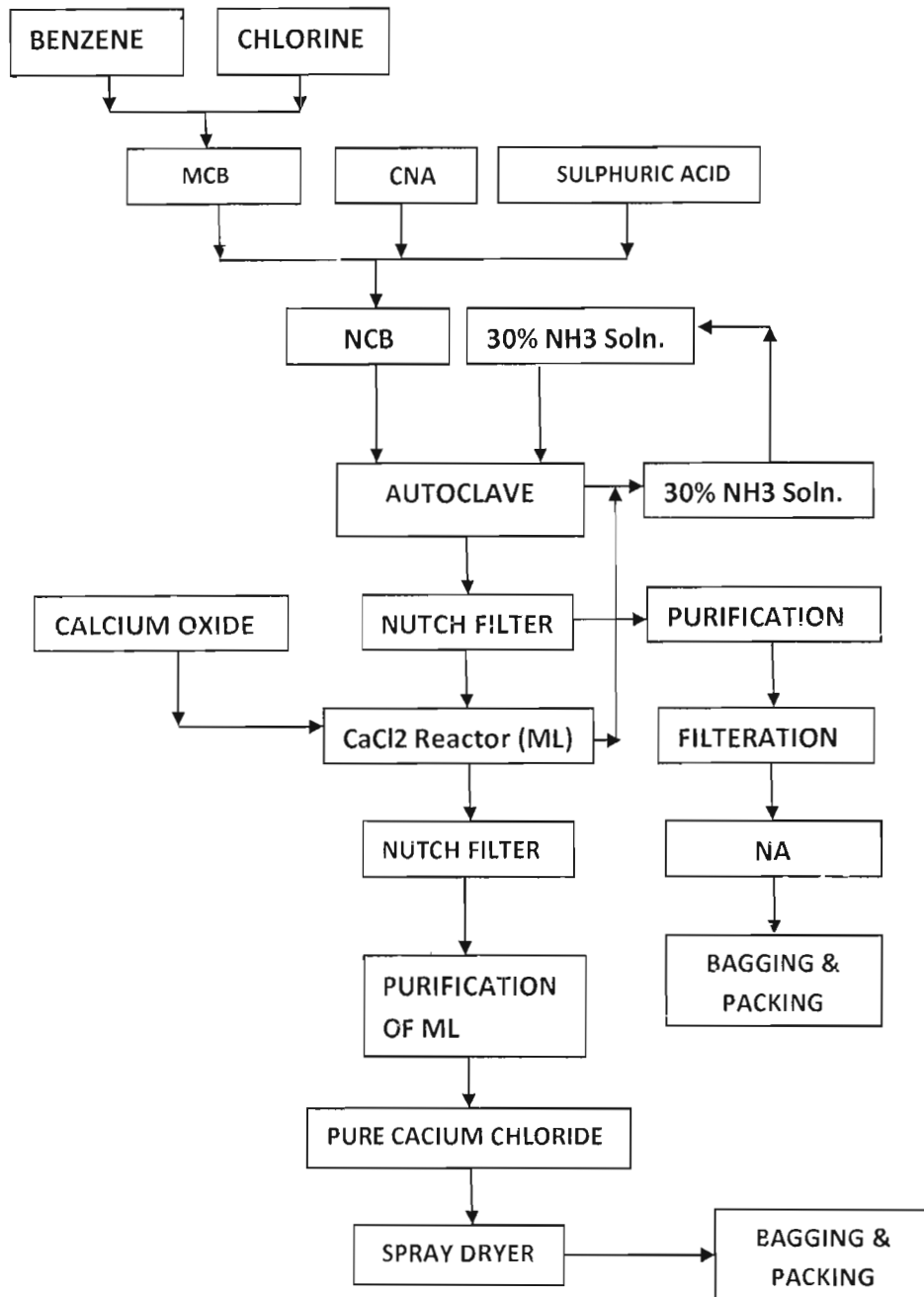
B. S.
Authorised



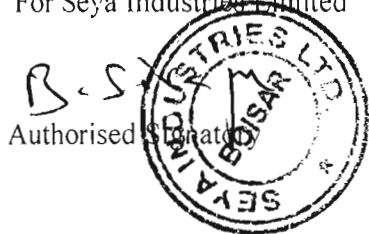
SEYA INDUSTRIES LIMITED

Plot No. T-13/14 & K-58/2, MIDC Industrial Area, Tarapur, Boisar, Tal. & District – Palghar, Maharashtra 401506
Email seya1.boisar@gmail.com

NITRO ANILINE (NA) PLANT-FLOW DIAGRAM



For Seya Industries Limited



SEYA INDUSTRIES LIMITED

Plot No. T-13/14 & K-58/2, MIDC Industrial Area, Tarapur, Boisar, Tal. & District - Palghar, Maharashtra 401506

Email seya1.boisar@gmail.com

RAW MATERIAL OF NITRO ANILINE (NA)

Sr. No.	NAME OF RAW MATERIAL	QUANTITY MT/DAY
1	BENZENE	7.120
2	CHLORINE	6.840
3	NITRIC ACID	5.393
4	SULPHURIC ACID	4.880
5	AMMONIA (30%)	32.200
6	CALCIUM OXIDE	1.200
7	D.M. WATER	25.567

LIST OF FINISHED PRODUCT

Sr. No	NAME OF FINISHED PRODUCT	QUANTITY MT/DAY
1	NITRO ANILINE	11.167

FOR SEYA INDUSTRIES LIMITED

R. Siva
AUTHORISED SIGNATOR



Form 1

[see rules 3,5,8,11 and 14]

✓ Application for permission to construct a new factory, to extend factory or take into use any building as a factory /

Application for Registration and Notice of occupation specified in sections 6 and 7 and for Grant of licence / Renewal of licence of a factory

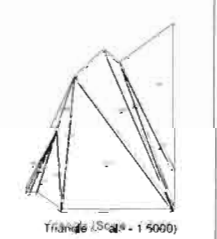
1 Full name and address of factory	SEYA INDUSTRIES LTD Plot No. T 13/14, K-58/2, MIDC TARAPUR, Near Lupin Ltd, MIDC, MAHARASHTRA, Palghar, Palghar, pam, 401506						
Telephone Number	09225122282						
Fax Number							
E-Mail	seya.boisar@gmail.com						
2 If already registered, month and year of registration	01/2017						
3 Licence number, if granted	0564						
4 Reference number and date of latest approval of the plants by the State Government / Chief Inspector of Factories / Joint Chief Inspector of Factories / Deputy Chief Inspector Of Factories.	PLN/80/2012/PTU/3245/VASAI 27/04/2012						
5 A flow chart of the manufacturing process supplemented by a brief description of the process in its various stages, list of the raw materials used, intermediate products, including emission of toxic gases, etc., finished products by-products, their quantities, method of storage and handling, loading and transport and details of the arrangements for the disposal of trade waste and effluents, the likely hazards and the method to control or eliminate them. (Attach separate sheet if required)	As per attachment						
6 Particulars of plants to be installed	Auto Clave reactor, Vessel						
7 The period for which licence or renewal of licence is applied for (not exceeding ten years)							
8 Maximum number of workers to be employed on any one day during the year	<table><thead><tr><th>Female</th><th>Male</th><th>Total</th></tr></thead><tbody><tr><td>0</td><td>140</td><td>140</td></tr></tbody></table>	Female	Male	Total	0	140	140
Female	Male	Total					
0	140	140					
9 Installed power in H.P	2000						
10 Full name and residential address of Occupier Director/Partner/Proprietor	MR ASHOK G RAJANI B/12, Keshavdham co op HSG Society Ltd, Palghar Road, Near Bank of India, Boisar, Palghar, Palghar, MAHARASHTRA, 401501						
Date of Birth	08/04/1955						
Nationality	Indian						
Mobile No and E-Mail	9225140038 seya.boisar@gmail.com						
Signature of Occupier	X						
11 Full name and residential address of Manager	MR SIVAPRASADA RAO BUDDI B 102 Building No 9 MAD COMPLEX, Palghar Road, Near Jain Mandir, Yeshwant Shrushti, 552387, Palghar, Palghar, MAHARASHTRA, 401501						
Date of Birth	01/07/1958						
Nationality	Indian						
Mobile No and E-Mail	9673031758 bsprao@seya.in						
Signature of Manager	X						
Old Licence No:	Old Date of Register:						
Old Expire Date:	Type of Factory: Hazardous Factory						
Category of Factory: Public	Class of Factory: General Factory						
Section Under FA: 2(m)(i)	Type of Occupier:						
Old Charged Fee:	Old Extra payment:						

111

Chandra kant A Bhagat

Sl. No.	Description	Area	Rate	Amount
1.	Area of Plot	10000	10000	100000
2.	Area of Building	10000	10000	100000
3.	Area of Compound Wall	10000	10000	100000
4.	Area of Road	10000	10000	100000
5.	Area of Drainage	10000	10000	100000
6.	Area of Water Tank	10000	10000	100000
7.	Area of Electrical	10000	10000	100000
8.	Area of Sanitation	10000	10000	100000
9.	Area of Fire Fighting	10000	10000	100000
10.	Area of Landscaping	10000	10000	100000
11.	Area of Security	10000	10000	100000
12.	Area of Other	10000	10000	100000
13.	Total	100000	100000	10000000

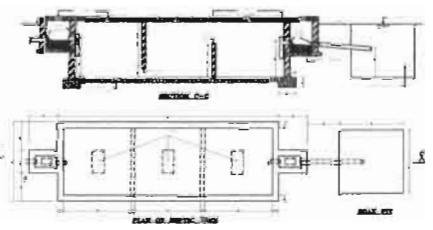
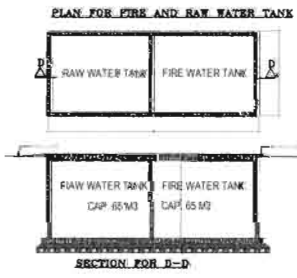
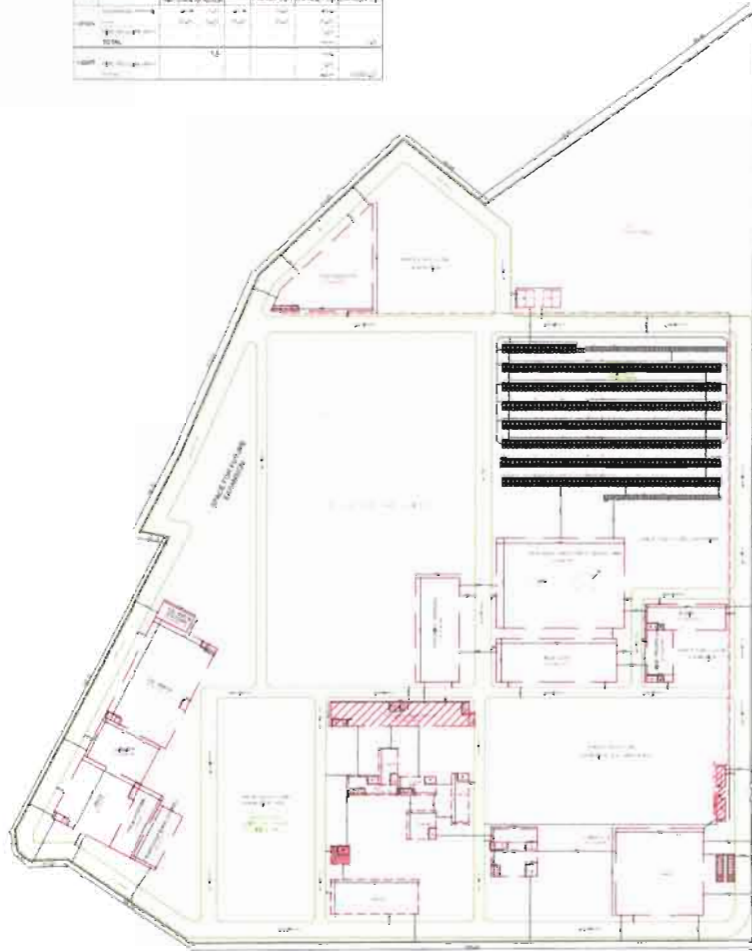
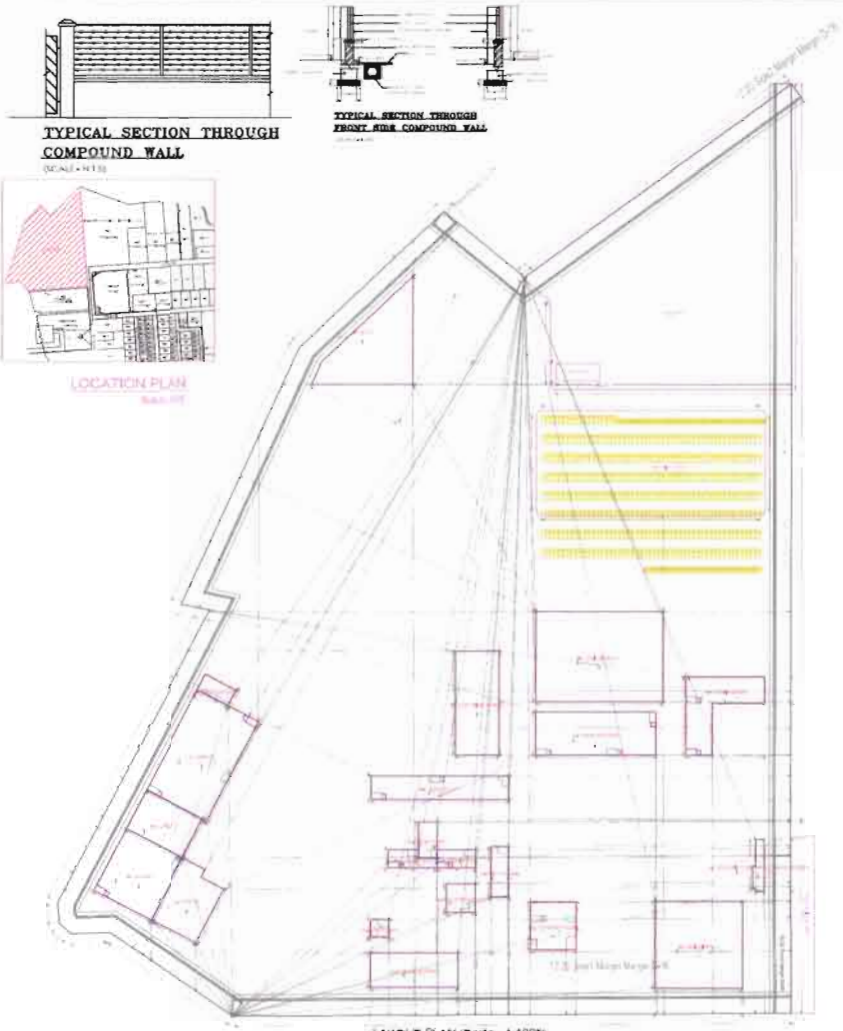
DECLARATION OF WORK
 I hereby declare that the above mentioned work is done in accordance with the provisions of the Act and the Rules made thereunder and the same is ready for occupation.



Sl. No.	Description	Area	Rate	Amount
1.	Area of Plot	10000	10000	100000
2.	Area of Building	10000	10000	100000
3.	Area of Compound Wall	10000	10000	100000
4.	Area of Road	10000	10000	100000
5.	Area of Drainage	10000	10000	100000
6.	Area of Water Tank	10000	10000	100000
7.	Area of Electrical	10000	10000	100000
8.	Area of Sanitation	10000	10000	100000
9.	Area of Fire Fighting	10000	10000	100000
10.	Area of Landscaping	10000	10000	100000
11.	Area of Security	10000	10000	100000
12.	Area of Other	10000	10000	100000
13.	Total	100000	100000	10000000

DECLARATION
 I hereby declare that the above mentioned work is done in accordance with the provisions of the Act and the Rules made thereunder and the same is ready for occupation.

Sl. No.	Description	Area	Rate	Amount
1.	Area of Plot	10000	10000	100000
2.	Area of Building	10000	10000	100000
3.	Area of Compound Wall	10000	10000	100000
4.	Area of Road	10000	10000	100000
5.	Area of Drainage	10000	10000	100000
6.	Area of Water Tank	10000	10000	100000
7.	Area of Electrical	10000	10000	100000
8.	Area of Sanitation	10000	10000	100000
9.	Area of Fire Fighting	10000	10000	100000
10.	Area of Landscaping	10000	10000	100000
11.	Area of Security	10000	10000	100000
12.	Area of Other	10000	10000	100000
13.	Total	100000	100000	10000000



Sl. No.	Description	Area	Rate	Amount
1.	Area of Plot	10000	10000	100000
2.	Area of Building	10000	10000	100000
3.	Area of Compound Wall	10000	10000	100000
4.	Area of Road	10000	10000	100000
5.	Area of Drainage	10000	10000	100000
6.	Area of Water Tank	10000	10000	100000
7.	Area of Electrical	10000	10000	100000
8.	Area of Sanitation	10000	10000	100000
9.	Area of Fire Fighting	10000	10000	100000
10.	Area of Landscaping	10000	10000	100000
11.	Area of Security	10000	10000	100000
12.	Area of Other	10000	10000	100000
13.	Total	100000	100000	10000000

05-2018

LAST DISM

NEW ADDITION
JATAPAK

MATERIAL DESCRIPTION	RECEIVED QTY.	UOM.
TEMPLATE FOR FOUNDATION BOLT FOR M36x700 LG BOLT	2	Nos
FOUNDATION BOLT M36x700 LG	80	Nos
TEMPLATE FOR FOUNDATION BOLT FOR M36x700 LG BOLT	2	Nos
FOUNDATION BOLT M36x700 LG	80	Nos
GRILL CLAMP ASSEMBLY	1480	Nos
GRILL - G18 - 990X520	1	Nos
GRILL - G2 - 740X240	1	Nos
GRILL - G22 - 740X800	3	Nos
GRILL - G23 - 990X800	2	Nos
GRILL - G26 - 490X1000	3	Nos
GRILL - G27 - 740X1000	161	Nos
GRILL - G28 - 990X1000	150	Nos
GRILL - G30 - 1240X1000	44	Nos
GRILL - G31 - 540X1000	2	Nos
GRILL - G32 - 740X1080	2	Nos
GRILL CLAMP ASSEMBLY	1468	Nos
GRILL - G12 - 740X400	2	Nos
GRILL - G2 - 740X240	1	Nos
GRILL - G22 - 740X800	2	Nos
GRILL - G23 - 990X800	2	Nos
GRILL - G26 - 490X1000	3	Nos
GRILL - G27 - 740X1000	161	Nos
GRILL - G28 - 990X1000	149	Nos
GRILL - G30 - 1240X1000	43	Nos
GRILL - G31 - 540X1000	2	Nos
GRILL - G32 - 740X1080	2	Nos
CASING ROOF PANEL ACCESS DOOR STD	4	Nos
STRUCTURE - OSP CASING HARDWARE & GASSET PLATE, PACKING PLATE	1	Lot
OSP - SUPPORT STRUCTURE - COLUMN	8	Nos
CASING ROOF PANEL ACCESS DOOR STD	4	Nos
STRUCTURE - OSP CASING HARDWARE & GASSET PLATE, PACKING PLATE	1	Lot
OSP - SUPPORT STRUCTURE - COLUMN	8	Nos
PACKER PLATE 200X50X20	272	Nos
PACKER PLATE 200X50X10	136	Nos
PACKER PLATE 200X50X5	136	Nos
PACKER PLATE 200X50X3	136	Nos
PACKER PLATE 200X50X1	272	Nos
FOUNDATION BOLT M30x900 LG	16	Nos
FOUNDATION BOLT M36x1100 LG	88	Nos
FOUNDATION BOLT M24x700 LG	16	Nos
FOUNDATION BOLT M24x700 LG	16	Nos
BRACING ELEVATION @ GRID 1,4,5	1	Pcs
BRACING ELEVATION @ GRID 2,3	1	Pcs
BRACING ELEVATION @ GRID A & D	1	Pcs
BRACING ELEVATION @ GRID B	1	Pcs
BRACING ELEVATION @ GRID C	1	Pcs
BRACING ELEVATION @ GRID 1,4,5	1	Pcs
BRACING ELEVATION @ GRID 2,3	1	Pcs
BRACING ELEVATION @ GRID E & H	1	Pcs
BRACING ELEVATION @ GRID F	1	Pcs
BRACING ELEVATION @ GRID G	1	Pcs
OSP - SUPPORT STRUCTURE - COLUMN	2	Nos
OSP - SUPPORT STRUCTURE - BRACING & TIE BEAM	93	Nos
STR BEARINGS	10	Nos
TOP & BOTTOM HANG ASLY	100	Nos
OSP - GIRDER	10	Nos
OSP - PLATFORM INTERNAL, SUPPORT BRACKET, MS FLAT	1	Lot
OSP - CASING SIDE PANEL	36	Nos
OSP - COLUMN	2	Nos
OSP - BRACING, TIE BEAM	93	Nos
STRUCTUREAL BEARING TB-70, TF-70, TY-70, TX-70	9	Nos
TOP & BOTTOM HANG ASLY	104	Nos
OSP - GIRDER	10	Nos
OSP - PLATFORM INTERNAL, SUPPORT BRACKET, MS FLAT	1	Lot
OSP - CASING SIDE PANEL	36	Nos
OSP - CASING PANEL	30	Nos
OSP - HOPPER PANEL	48	Nos

MS HEX NUT - M16	1580	Nos
MS HEX BOLT - M16X45	930	Nos
MS HEX BOLT - M16X55	610	Nos
MS HEX BOLT - M16X65	40	Nos
MS TAPER WASHER ISMB IS - 5374 - M16	405	Nos
MS PLAIN WASHER IS2016-IS2062 - M16	1160	Nos
MS HEX NUT - M16	1460	Nos
MS HEX BOLT - M16X45	835	Nos
MS HEX BOLT - M16X55	585	Nos
MS HEX BOLT - M16X65	40	Nos
MS TAPER WASHER ISMB IS - 5374 - M16	420	Nos
MS PLAIN WASHER IS2016-IS2062 - M16	1040	Nos
DETAILS OF BEAM AT LVL +6000	68	Nos
DISHCHARGE ELECTRODE	283	Nos
DISHCHARGE ELECTRODE	283	Nos
ELECTRICAL MISCELLANEOUS	1	Lot
MECHANICAL ACCESSORIES	1	Lot
HOPPER ACCESSORIES	1	Lot
HOPPER PANEL	48	Nos
CASING COLUMN	10	Nos
C E HANGING ARRANGEMENT	1	Lot
D E MOUNTING ASSEMBLY	1	Lot
HV ASSEMBLY & T/R SET BASE FRAME	1	Lot
MECHANICAL ACCESSORIES	0.7	Lot
SPECIAL TOOLINGS	1	Lot
SLIDE GATE MANUAL	1	Lot
EXPANSION JOINT	1	Lot
ELECTRICAL MISCELLANEOUS	0.3	Lot
ROTARY AIRLOCK VALVE	1	Lot
HOPPER ACCESSORIES	1	Lot
DISHCHARGE ELECTRODE	152	Nos
TEMPLATE FOR FOUNDATION BOLT OF BOILER	28	Nos
MICRO TAPER PANEL	1	Nos
RAPPER DISTRIBUTION BOARD	1	Nos
MICRO TAPER PANEL	1	Nos
RAPPER DISTRIBUTION BOARD	1	Nos
DETAILS OF BEAM AT LVL +3000	12	Nos
DETAILS OF BEAM AT LVL +6000	54	Nos
DETAILS OF BEAM AT LVL +8400	59	Nos
DETAILS OF BEAM AT LVL +10800	26	Nos
DETAILS OF BEAM AT LVL +13200	39	Nos
DETAILS OF BEAM AT LVL +15600	34	Nos
BED ASH COOLER	3	Pcs
BED ASH COOLER	3	Pcs
OSP - INLET NOZZLE & ACCESSORIES	1	Lot
OSP - INLET NOZZLE & ACCESSORIES	1	Lot
D E MOUNTING ASSEMBLY	1	Lot
C E HANGING ARRANGEMENT	1	Lot
PIPE HORIZONTAL, PIPE STRUTS & WALKWAY	15	Nos
CASING BAFFEL, CASING SIDE PANEL, CHANNEL	1	Lot
CASING BAFFEL, SAFETY LADDER, CASING SIDE PANEL, CASING ROOF PANEL, CHANNEL	1	Lot
OSP - OUTLET PLENUM -ANGLE, OUTLET NOZZLE PANEL, CORNER FLAT	4	Lot
SAFETY LADDER, PIPE BRACING	1	Lot
CASING ROOF PANEL	16	Nos
OSP - OUTLET PLENUM -ANGLE, OUTLET NOZZLE PANEL, CORNER FLAT	1	Lot
PIPE BRACING	1	Lot
RISER, SATURATED STEAM SUPPLY PIPES & DOWNCOMERS	1	Lot
RISER, SATURATED STEAM SUPPLY PIPES & DOWNCOMERS	1	Lot
DETAILS OF BEAM A LVL +3000	15	Nos
DETAILS OF BEAM A LVL +8400	15	Nos
DETAILS OF BEAM A LVL +10800	10	Nos
DETAILS OF BEAM A LVL +13200	10	Nos
DETAILS OF BEAM A LVL +15600	18	Nos
INCLINED RAILING, RAILING, PIPE, STEP GRATING, LANDING GRATING, PLATFORM GRATING, GRATING SPARES	418	Nos

STRINGER,SELF SUPPORT BRACKET,LANDING,PLATFORM,PLATFORM FOR NOZZLE RAPPER,LADDER SELF SUPPORT,STOPPER, C CLAMP,WELDABLE CLAMP,CHANNEL,ANGLE,FLAT, BRACKET PIPE	1932	Nos
TEMPORARY ERECTION SUPPORT WATER DRUM	70	Nos
TEMPORARY ERECTION SUPPORT WATER DRUM	70	Nos
HIGH VOLTAGE TRANSFORMER RECTIFIER WITH HV DUCT	4	Set
HIGH VOLTAGE TRANSFORMER RECTIFIER WITH HV DUCT	4	Set
DETAILS OF BEAM AT LVL -18000	47	Nos
DETAILS OF BEAM AT LVL +20400	42	Nos
DETAILS OF BEAM AT LVL +22800 & 25200, 25295,25832,26900,26997,27400	47	Nos
RAILING TYPE I	20	Nos
RAILING TYPE II	77	Nos
RAILING TYPE III	47	Nos
RAILING TYPE IV	155	Nos
RAILING TYPE I	50	Nos
MONORAIL STRUCTURE ASSEMBLY AND HARDWARE	1	Set
PENTHOUSE ASSEMBLY AND HARDWARE AND HARDWARE	1	Set
CASING - PIPE HORIZONTAL 4668LONG	15	Nos
CASING - PIPE STRUTS & WALKWAY	10	Nos
COLLECTING ELECTRODE TTR, 1.2THK A-9245MM LONG (EFF.HT=9.4M)	155	Nos
RAV WITH GM (350,20,CD,HRB,1.45,415,TAV)	4	Nos
CHEQUIRE PLATE	33	Nos
CHEQUIRE PLATE	19	Nos
ANGLE - 6090 LONG	40	Nos
ANGLE - 4090 LONG	2	Nos
ASSEMBLE & DETAILS OF COLUMN B3	3	Nos
ASSEMBLE & DETAILS OF COLUMN C3	3	Nos
ASSEMBLE & DETAILS OF COLUMN C5	2	Nos
ASSEMBLE & DETAILS OF COLUMN A2	3	Nos
ASSEMBLE & DETAILS OF COLUMN A3	3	Nos
ASSEMBLE & DETAILS OF COLUMN D2	3	Nos
ASSEMBLE & DETAILS OF COLUMN D3	3	Nos
ASSEMBLE & DETAILS OF COLUMN B4	2	Nos
ASSEMBLE & DETAILS OF COLUMN B5	3	Nos
COLLECTING ELECTRODE TTR, 1.2THK A-9245MM LONG (EFF.HT=9.4M)	190	Nos
HOOK-UP DIA FOR ZERO SPEED SWITCH	4	Nos
MONORAIL STRUCTURE ASSEMBLY AND HARDWARE	1	Set
PENTHOUSE ASSEMBLY AND HARDWARE AND HARDWARE	1	Set
MS ANGLE 50X50X5MM	64	Kg
INSULATION HARDWARE & MISC	1	Lot
ACCESS DOOR LH FOR PENT HOUSE	1	Nos
CATOON BOX FOR HV ASSLY	1	Nos
EXPANSION JOINT INLET OUT LET	2	Nos
H.V. ASSEMBLY TL-C	4	Nos
BILL OF MATERIAL FOR INLET OUT LEFT NOZZLE PERFORATED	1	Lot
DETAILS OF BEAM AT LVL +15600	42	Nos
DETAILS OF BEAM AT LVL +18000	39	Nos
DETAILS OF BEAM AT LVL +22800 & 25200, 25295,25832,26997,27400	34	Nos
ASSEMBLE & DETAILS OF COLUMN C4	2	Nos
ASSEMBLE & DETAILS OF COLUMN B2	2	Nos
ASSEMBLE & DETAILS OF COLUMN C2	3	Nos
ASSEMBLE & DETAILS OF COLUMN B1	1	Nos
ASSEMBLE & DETAILS OF COLUMN E3	3	Nos
ASSEMBLE & DETAILS OF COLUMN H2	3	Nos
ASSEMBLE & DETAILS OF COLUMN G1	1	Nos
SPLICE PLATE 8MM, 10MM, 12MM, 20MM WITH HARDWARE M16X45, 50 & 65	1	Lot
RAILING TYPE I	59	Nos
RAILING TYPE I	11	Nos
RAILING TYPE II	50	Nos

RAILING TYPE II	25	Nos
RAILING TYPE III	56	Nos
RAILING TYPE IV	76	Nos
RAILING TYPE IV	80	Nos
"U" SLING SUPPORT FOR STEAM DRUM	2	Nos
"U" SLING SUPPORT FOR STEAM DRUM	2	Nos
DETAILS OF BEAM AT LVL +3000	27	Nos
DETAILS OF BEAM AT LVL +6000	66	Nos
ASSLY & DETAILS OF COLUMN F5	2	Nos
ASSLY & DETAILS OF COLUMN G5	2	Nos
ASSLY & DETAILS OF COLUMN F2	2	Nos
ASSLY & DETAILS OF COLUMN F1	1	Nos
COLLECTING ELECTRODE TTR, 1.2THK A=9245MM LONG (EFF HT=9.4M)	117	Nos
EXTENTION CHUTE 4MM TH DIA 350	4	Nos
EXTENTION CHUTE 4MM TH DIA 350	4	Nos
ASSLY DEATAILS OF BUCKSTAY	124	Nos
ASSLY DEATAILS OF BUCKSTAY	79	Nos
ASSLY DEATAILS OF BUCKSTAY	99	Nos
DEATAILS OF NOSE BUCKSTAY	1	Nos
ASSLY DEATAILS OF ROOF BUCKSTAY - 1	1	Nos
ASSLY DEATAILS OF ROOF BUCKSTAY - 2	1	Nos
ASSLY DEATAILS OF BUCKSTAY	124	Nos
ASSLY DEATAILS OF BUCKSTAY	79	Nos
ASSLY DEATAILS OF BUCKSTAY	99	Nos
DEATAILS OF NOSE BUCKSTAY	1	Nos
ASSLY DEATAILS OF ROOF BUCKSTAY - 1	1	Nos
ASSLY DEATAILS OF ROOF BUCKSTAY - 2	1	Nos
THERMOSTAT 70-150DEG	5	Nos
GROUNDING LOCK	14	Nos
ZERO SPEED SWITCH	4	Nos
LEVEL SWITCH	4	Nos
INSULATOR HEATER JUNCTION BOX	1	Nos
INSULATOR HEATER 415 50HZ	8	Nos
HOOK-UP DIA FOR THERMOSTAT	5	Nos
JUNCTION BOX FOR HOPPER HEATER PAD	4	Nos
ANVIL CAP GROUNDING JUMPER FOR E-TUBE RAPPER	8	Nos
GROUNDING CLAMP FOR COLLECTING RAPER ROD	28	Nos
JUNCTION BOX	1	Nos
RAPER COIL WITH SHIELD	1	Nos
CONTROL CABLE PTFE 2CX1.5 Sqmm	130	Nos
DOUBLE COMPRESSIVE CABLE GLAND	18	Nos
CRIMPING LUG FOR 1.5 Sqmm	50	Nos
DIODE 45A (AUTODATA)	4	Nos
WORM GEAR CLAMP DIA 55	4	Nos
WORM GEAR CLAMP DIA 80	4	Nos
GASKET FOR CYLINDRICAL SUPPORT INSULATOR FOR 510 OD 5THK NON ASBESTOS	4	Nos
NAME PLATE FOR ESP UNIT	1	Nos
COUPLER PLATE	42	Nos
E-TUBE PANEL SUPPORT SPRING 366-680 KG	24	Nos
ROUND ACCESS DOOR	4	Nos
MANUALLY OPDT SLIDE GATE VALVE 350	8	Nos
TUBULAR TYPE HOPPER FOR BYPASS CHUTE	28	Nos
RAV WITH GM (350,20,CD,HRB,1.45,415,TAV)	4	Nos
RAPPER COIL WITH SHIELD	37	Nos
DOOR INTERLOCK SYSTEM 4NOS TR 10NOS ACCESS DOOR	1	Nos
INSULATOR HEATER	1	Nos
HYPLON BOOT 73 4 76	4	Nos
CONNECTING JUMPER 200 LONG DRY TYPE PANEL FILTER	4	Nos
DRY TYPE PANEL FILTER 4 PLY FOR 1020 - 1360 M3/HR	4	Nos
SMART PURGE SYSTEM		
JUNCTION BOX	2	Nos
SCREW M6X15 WITH WASHER	102	Nos
LONG END BEND 40NB	1	Nos
HOOK-UP DIA FOR INSULATOR	8	Nos
SMART PURGE SYSTEM TL 1360 M3/HR WITH HEATER MOUNTING	4	Nos
CABLE TRAY PERFORATED 75MM	21	Nos
GI FLATE 50X6MM	115	Mtr
ESP INTERNAL ASSLY COMPONENTES	1	Lot
BILL OF MATERIAL FOR INLET OUTLET NOZZLE PERFORATED	52	Mtr
DOOR INTERLOCK SYSTEM 4NOS TR 10NOS ACCESS DOOR	1	Nos
JUNCTION BOX	4	Nos

RUBBER MAT	1	Nos
INSULATOR HEATER 415 50HZ	1	Nos
HYPLON BOOT 73 4.76	4	Nos
WARNING SIGN FOR DUCT & HIGH VOLTAGE	10	Nos
THERMAX MONOGRAM	1	Nos
WARNING SIGN FOR (EXPLOSION) BOILER OPERATION / TUNING	1	Nos
GASKET FOR CYLINDRICAL SUPPORT INSULATOR FOR 510 OD 5THK NON ASBESTOS	16	Nos
DRY TYPE PANEL FILTER 4 PLY FOR 1020 - 1360 M3/HR SMART PURGE SYSTEM	4	Nos
CONNECTING JUMPER 200 LONGDRY TYPE PANEL FILTER	4	Nos
HOOK-UP DIA FOR INSULATOR HEATER	8	Nos
G.I. WIRE 8 GAUGE (DIA 4.03 MM)	290	Mtr
SCREW M6X15 WITH WASHER	102	Nos
LONG END BEND 40NB	1	Nos
BRACKET FOR WARNING SIGN HOPPWER ACCESS	8	Nos
BRACKET FOR WARNING SIGN DUCT ACCESS & HIGH VOLTAGE	8	Nos
BRACKET FOR WARNING SIGN (EXPLOSION) BOILER OPERATION & TUNING	2	Nos
SMART PURGE SYSTEM TL 1360 M3/HR WITH HEATER MOUNTING	6	Nos
ACCESS DOOR LH FOR INLET NOZZLE	3	Nos
ACCESS DOOR LH FOR OUTLET NOZZLE	1	Nos
MONORAIL TROLEY HAND OPERATED, 3T I-BEAM RAIL-2M	1	Nos
MONORAIL TROLEY HAND OPERATED, 3T 27M HT	1	Nos
GI FLATE 50X6MM	115	Mtr
ESP INTERNAL ASSLY COMPONENTES	1	Lot
ESP INTERNAL - RAPPING COMPONENTES	1	Lot
MS PLATE 20MM	2490	Kg
6 MW ALTERNATOR WITH ACCESSORIES	1	Lot
TR. SHEET - 930X3000X0.5MM	480	Nos
TR. SHEET - 930X2000X0.5MM	135	Nos
TR. SHEET - 930X1000X0.5MM	20	Nos
CORNER PL ST 1500X500X0.5MM	1	Nos
TRANSLUCENT SHEET - 930X3000X2 MM	10	Nos
TR. SHEET - 930X3000X0.5MM	386	Nos
TR. SHEET - 930X2000X0.5MM	94	Nos
TR. SHEET - 930X1000X0.5MM	17	Nos
TRANSLUCENT SHEET - 930X3000X2 MM	10	Nos
PRESSURE RELIEF VALVE PRV-001, PRV-002 & PRV-003	3	Nos
HEX NUT M6	102	Nos
CONNECTING JUMPER 100 LONG	12	Nos
STRUCTURAL BEARING TX-70	1	Nos
GD SCREEN FABRICATED PART	1	Lot
MS FLAT 25X3	2075	Kg
MS ANGLE 50X50X5MM	37	Kg
HEX NUT M6	102	Nos
CONNECTING JUMPER 100 LONG	12	Nos
STRUCTURAL BEARING TX-70	1	Nos
GD SCREEN FABRICATED PART	1	Lot
MS FLAT 25X3	2075	Kg
MS ANGLE 50X50X5MM	37	Kg
LOCAL PUSH BUTTON STATION (START-STOP)	6	Nos
DIODE 45A (AUTODATA)	10	Nos
MOTOR CONTROL PANEL (MCB)	1	Nos
MS ANGLE 50X50X5MM	27	Kg
GI FLATE 50X6MM	80	Mtr
MOTOR CONTROL PANEL (MCB)	1	Nos
ALUMINIUM STRIP 25X3	7	Mtr
PURGE AIR - 1360 M3 HR	2	Nos
ACCESS DOOR LH : FOR INLET NOZZLE	1	Nos
MOTOR CONTROL PANEL (MCB)	1	Nos
SUPPORT INSULATOR (120KV)	8	Nos
GI FLATE 25X3MM	80	Mtr
CHOLRINE DOSING PUMP	100	%
RO MEMBRANCE	100	%
RESIN FOR MB (1540-1540)	50	%
SDI	100	%
PH TRANSMITTER	67	%
PA FAN	2	Nos
ACTUATOR STOOL WITH MOUNTING BOLTS&N.B.W/	2	Nos
BEARING STOOL NDE	2	Nos
COUPLING GEIARD WITH SUPPORTRING ANGLES	2	Nos
COMMON BASE FRAME WITH BEARING STOOL DE ADJUSTING HARDWARE	2	Nos
PA FAN	2	Nos

ACTUATORSTOOL WITH MOUNTING BOLTS(N.B/W)	2	Nos
BEARING STOOL NDE	2	Nos
COUPLING GUARD WITH SUPPOTRING ANGLES	2	Nos
COMMON BASE FRAME WITH BEARING STOOL DE ADJUSTING HARDWARE	2	Nos
FOUNDATION BOLT M20X400 LONG	116	Nos
MOTOR FIXING BOLT M20X120	16	Nos
INLET BOX TO INLET MACHING FLANGE M12X50	88	Nos
OUTLET FLANGE TO OUTLET MACHING FLANGE 12X50	96	Nos
PACKING PLATE 5MM	104	Nos
PACKING PLATE 3MM	104	Nos
PACKING PLATE 2.5 MM	104	Nos
SS SHIM 0.5X150X1200MM SS304	4	Nos
SS SHIM 0.1X150X1200MM SS304	4	Nos
3 WIRE DUPLEX TYPE RTD (GIC) - PT100	8	Nos
COOLING WHEEL DE 90MM	4	Nos
COOLING WHEEL NDE 70MM	4	Nos
COOLING WHEEL GUARD DE WITH SUPPORTING ANGLES	4	Nos
COOLING WHEEL GUARD NDE WITH SUPPORTING ANGLES	4	Nos
ANTI ROTATION DEVICE BRACKET	8	Nos
NON ASBESTOS GASKET	24	Mtr
ANTI ROTATION DEVICE	4	Nos
PNEUMATIC VIBRATOR	6	Nos
EXPANSION JOINT	6	Nos
TERMINAL END BOX 100NB	2	Nos
REVERSE PULSE JET BAG FILTER FOR BED ASH SILO	1	Nos
PRESSURE RELIEV VALVE 100NB	1	Nos
WATER COOLED SURGE HOPPER WITH BYPASS	4	Nos
KNIFE GATE VALVE (P.C.O.) 200NB	2	Nos
SPOOL PIECE	4	Nos
EXPANSION JOINT	7	Nos
LEVEL TRANSMITTER (RADAR TYPE)	1	Nos
TERMINAL END BOX 100NB	4	Nos
TERMINAL END BOX 80NB	6	Nos
REVERSE PULSE JET BAG FILTER FOR BED ASH SILO	1	Nos
PRESSURE RELIEV VALVE 200NB	1	Nos
SPOOL PIECE CUM RUBBER BELOW	2	Nos
METAL DETECTOR 650MM B/W 85 TPH	1	Nos
METAL DETECTOR 650MM B/W 5 TPH	1	Nos
OIL COOLED ELECTRO MAGNETIC SEPERATOR 650MM B/W 85 TPH	1	Nos
OIL COOLED ELECTRO MAGNETIC OVERHAND MAGNETIC SEPERATOR 650MM B/W 5 TPH	1	Nos
MOTORISED VIBRATORY FEEDER 600MM W X 1000MM L 5 TPH	1	Nos
MOTORISED VIBRATORY FEEDER 600MM W X 1000MM L 20 TPH	2	Nos
ALUMINIUM SHEET 0.711 THK 22 SWG	1209	Sqft
ALUMINIUM SHEET 0.711 THK 22 SWG	1206	Sqft
CONNECTING JUMPER 100 LONG	4	Nos
SHAFT INSULATOR 1016MM	7	Nos
CONNECTING JUMPER 100 LONG	16	Nos
LIFTING BEAM FOR CE & DE (2MT) 4.75 TO 6.25 & 8.5 TO 10.5	1	Lot
FIXTURE & LIFTING FRAME FOR CE (TR) WITH WIDTH 3 MTR CE HIGHT 9.4 MTR	1	Lot
CAST STEEL CHECK VALVE 200NB 300# IBR F/E FCV-200- 3521	1	Nos
CAST STEEL CHECK VALVE 400NB 150# IBR F/E FCV-400- 4067	1	Nos
FORGED ALLOY STEEL(F22) GLOBE VALVE 25MM S/W 1500#	2	Nos
FORGED STEEL(A105) GATE VALVE 50MM S/W 800#	1	Nos
FORGED STEEL(A105) GLOBE VALVE 20MM S/W 800#	4	Nos
FORGED STEEL(A105) GLOBE VALVE 25MM S/W 800#	3	Nos
FORGED STEEL(A105) GATE VALVE 50MM S/W 800#	1	Nos
CAST STEEL(WCB) GATE VALVE 100MM F/E 150#	1	Nos
CAST STEEL(WCB) GATE VALVE 80MM F/E 150#	2	Nos
CAST STEEL(WCB) GATE VALVE 50MM F/E 150#	4	Nos
CASTS STEEL(WCB) GLOBE VALVE 50MM F/E 150#	4	Nos
CAST STEEL(WCB) GATE VALVE 80MM F/E 150#	2	Nos
CAST STEEL(WCB) GATE VALVE 100MM F/E 150#	1	Nos
INDUSTRIAL GATE GLOBE & CHECK VALVE 20MM, 25MM, 100MM	74	Nos
SIGNAL JUNCTION BOX	10	Nos
CONTROL (DIGITAL) JUNCTION BOX	7	Nos
RTD JUNCTION BOX	4	Nos
THERMOCOUPLE JUNCTION BOX	2	Nos

POWER JUNCTION BOX	1	Nos
SIGNAL JUNCTION BOX	10	Nos
CONTROL (DIGITAL) JUNCTION BOX	7	Nos
RTD JUNCTION BOX	4	Nos
THERMOCOUPLE JUNCTION BOX	2	Nos
POWER JUNCTION BOX	1	Nos
DM TRANSFER PUMP 3X400 690 50 HZ	2	Nos
SAVSOL SUPER TURBINE FLUID 46	7980	Ltr
SAVSOL SUPER TURBINE FLUID 46	7980	Ltr
SAVSOL SUPER TURBINE FLUID 46	4830	Ltr
SAVSOL SUPER TURBINE FLUID 46	3360	Ltr
BOILER FEED PUMP (BFP) HAD 80/13 PUMP-STD ACCESSORIES	1	Set
BOILER FEED PUMP (BFP) HAD 80/13 PUMP-STD ACCESSORIES	1	Set
BOILER FEED PUMP (BFP) HAD 80/13 PUMP-STD ACCESSORIES	1	Set
PA FAN SUCTION DUCT	39	Nos
PA FAN SUCTION DUCT	39	Nos
BOILER FEED PUMP (BFP) HAD 80/13 PUMP-STD ACCESSORIES	1	Set
8 MW ALTERNATOR WITH ACCESSORIES	1	Lot
COLUMN F4	3	Nos
COLUMN G4	3	Nos
COLUMN H3	3	Nos
GEAR BOX & MOTOR MOUNTING	4	Set
CHAIN PULLEY BLOCK WITH TROLLEY LIFTING	1	Set
PULTRATED FRP STRUCTURE	1	Set
FRP DECK PANEL	1	Set
FRP CASING	4	Set
FRP FAN STACK	4	Set
ELIMINATOR	4	Set
COLUMN C1	1	Nos
COLUMN E1	3	Nos
COLUMN F3	3	Nos
ESPTO ID FAN DUCT	14	Nos
COLUMN G2	1	Set
COLUMN G3	1	Set
SPLASH TYPE OPTI GRID	1500	Nos
SPLASH TYPE OPTI GRID	1568	Nos
SPLASH TYPE OPTI GRID	1240	Nos
GATE GLOBE & MOTORIZED VALVE	7	Nos
GATE GLOBE VALVE A105 & A182 316 304	164	Nos
GATE GLOBE CHECK VALVE A105 & A182 316 304	187	Nos
GATE GLOBE VALVE 900 & 1500#	3	Nos
STAIRCASE ST-1	3	Nos
RAILING FOR STAIRCASE ST-1	3	Nos
STAIRCASE ST-2	14	Nos
RAILING FOR STAIRCASE ST-2	6	Nos
STAIRCASE ST-3 TO ST-9	6	Nos
RAILING STAIRCASE ST-3 TO ST-9	28	Nos
GRILL STAIRCASE ST-3 TO 9	1	Lot
GRILL FOR STAIRCASE ST-1	1	Lot
GRILL FOR STAIRCASE ST-2	1	Lot
METAL WATER STORAGE TANK	1	Lot
DOWNCOMER PIPE	6	Nos
KNIFE GATE VALVE (H.W.O.) 200NB	6	Nos
2.8.4 MASTER VESSEL	2	Nos
2.8.4 SLAVE VESSEL	4	Nos
KNIFE GATE VALVE (H.W.O.) 200NB	1	Nos
SPOOL PIECE	1	Nos
ADAPTOR CUM DOWNCOMER PIPE	4	Nos
KNIFE GATE VALVE (H.W.O.) 300NB	2	Nos
3.8.3 MASTER ASH VESSEL	6	Nos
3.8.3 SLAVE VESSEL	2	Nos
DOWNCOMER PIPE	2	Nos
KNIFE GATE VALVE (C.W.O.) 300NB	2	Nos
KNIFE GATE VALVE (PCO) 300NB	1	Nos
BYPASS CHUTE WITH SLIDE GATE VALVE	1	Nos

SURFACE CONDENSER 24TPH	1	Set
PUDDLE PIPE WITH COUNTER FLANGE	1	Set
WATER DISTRIBUTION	4	Set
BUTTERFLY VALVES	1	Set
SLUICE GATE SUMP SCREEN	4	Set
FAN ASSEMBLY	4	Set
HARDWARE	1	Set
TURBINE ACCESSORIES	1	Lot
TURBINE ACCESSORIES	1	Lot
DOUBLE COMPRESSIVE CABLE GLAND 3/4"	40	Nos
DOUBLE COMPRESSIVE CABLE GLAND 1/2"	50	Nos
GI CONDUIT PIPE 3/4"	8	Nos
GI CONDUIT PIPE 1/2"	8	Nos
AVR PANEL	1	Nos
AVR PANEL	1	Nos
GLAND VENT CONDENSOR 300 KG/HR	1	Nos
GLAND VENT CONDENSOR 300 KG/HR	1	Nos
GI PERFORATED CABLE TRAY 150MM X 50MM X 15MMX2MM WITH GI FLAT COVER	60	Mtr
90DEG HORIZONTAL ELBOW X 300R	3	Nos
90DEG VERTICAL INSIDE ELBOW X 300R	3	Nos
90DEG VERTICAL OUTSIDE ELBOW X 300R	3	Nos
HORIZONTAL TEE X 300R	3	Nos
GI PERFORATED CABLE TRAY 50MM X 30MM X 2MM WITH GI FLAT COVER	208	Mtr
90DEG HORIZONTAL ELBOW X 300R	155	Nos
90DEG VERTICAL INSIDE ELBOW X 150R	136	Nos
90DEG VERTICAL OUTSIDE ELBOW X 150R	136	Nos
MS ANGLE 50X50X6MM	70	Mtr
MS CHANNEL 100X50X6MM	40	Mtr
MS ANCHOR FASTNER M16X100	50	Nos
ELECTRIC MOTOR 60HP	2	Nos
ELECTRIC MOTOR 100HP	2	Nos
ELECTRIC MOTOR 180HP	2	Nos
PNEUMATIC PANEL FOR MASTER VESSAL	2	Nos
PNEUMATIC PANEL FOR SALVE VESSAL	4	Nos
CONVEYING LINE BENDS 100 NB	1	Set
HARDWARE FOR CONVEYING LINE	1	Set
PNEUMATIC PANEL FOR ASH MASTER VESSAL	10	Nos
PNEUMATIC PANEL FOR SALVE VESSAL	2	Nos
CONVEYING LINE BENDS 100 NB	1	Set
CONVEYING LINE BENDS 80 NB	1	Set
HARDWARE FOR CONVEYING LINE	1	Set
FLUIDISING PADS WITH RING HEADER	1	Set
TELESCOPIC CHUTE - 50 TPH	1	Nos
HARDWARES FOR UTILITY PIPE	1	Set
COMMISSIONINGS SPARES	1	Set
METAL WATER STORAGE TANK - 602KL	1	Lot
APH TUBE SHEET & BAFFEL PLATE	3	Nos
AIR PREHEATER SIDE CASING	9	Nos
APH TUBE SHEET & BAFFEL PLATE	3	Nos
AIR PREHEATER SIDE CASING	8	Nos
UTD 120 SIZE 25MM SW JBR (VALVE)	17	Nos
UTD 55F SIZE 25MM SW AISI 420 (VALVE)	40	Nos
SEISMIC STOP	1	Pcs
SEISMIC STOP	1	Pcs
BOILER SEALING - I	1	Pcs
BOILER SEALING - II	1	Pcs
SITE ATTACH - CONVECTION BANK	1	Pcs
ACCESS DOOR BOX AT FRONT PANEL	1	Pcs
WATER WALL BOTTOM HEADER SITE ATTACH	1	Pcs
BOILER SEALING - I	1	Pcs
BOILER SEALING - II	1	Pcs
SITE ATTACH - CONVECTION BANK	1	Pcs
ACCESS DOOR BOX AT FRONT PANEL	1	Pcs
WATER WALL BOTTOM HEADER SITE ATTACH	1	Pcs
FD & ID FAN ACCESSORIES & HARDWARE	1	Lot
THERMOCOUPLE & RTD (I3400004 TO I3400036	33	Nos
THERMOCOUPLE & RTD (I3400008 TO I3400036	29	Nos
PRESSURE SAFETY VALVE - 12-PSV-001 SL NO-201708285	1	Nos
PRESSURE SAFETY VALVE - 12-PSV-002 SL NO-201708289	1	Nos
PRESSURE SAFETY VALVE - 12-PSV-003 SL NO-201708841	1	Nos
PRESSURE SAFETY VALVE - 11-PSV-001 SL NO-201708283	1	Nos

PRESSURE SAFETY VALVE - 11-PSV-002 SL NO-201708284	1	Nos
PRESSURE SAFETY VALVE - 11-PSV-003 SL NO-201708221	1	Nos
SAFETY RELIEF VALVE 4" - DBXFR0351	1	Nos
SAFETY RELIEF VALVE 6" - DBEFR0173	1	Nos
SAFETY RELIEF VALVE 3/4" - TRV-500 & TRV-501	2	Nos
SAFETY RELIEF VALVE 6" - DBXFR0350	1	Nos
SAFETY RELIEF VALVE 6" - DBEFR0456	1	Nos
ADMITTANCE LEVEL LIMIT SWITCH FOR SOLID - 122M WITH ROD PROBE -300MM	10	Nos
ADMITTANCE LEVEL LIMIT SWITCH FOR SOLID - 122M WITH ROD PROBE -300MM	8	Nos
ADMITTANCE LEVEL LIMIT SWITCH FOR SOLID - 122M WITH ROD PROBE -500MM	2	Nos
DIFFERENTIAL PRESSURE TRANSMITTER	26	Nos
SS316 1/2 NPT 3 WAY MANIFOLD T TYPE INT	23	Nos
SS316 1/2 NPT 2 WAY MANIFOLD LINE MOUNT	3	Nos
SS304 TAG PLATES 25MMx90MM WITH 1 HOLE	30	Nos
PURGE ROTA METER 1/4" NPTF	1	Nos
AFR WITHOUT GAUGE 1/4" NPTF	1	Nos
TEMPERATURE TRANSMITTER	2	Nos
6X1.5 Sqmm SINGLE CORE CABLE	10	Mtr
2X1.5 Sqmm CORE POWER CABLE	10	Mtr
O2 ANALYZER SENSOR	2	Nos
TEMPERATURE TRANSMITTER	30	Nos
GAUGE PRESSURE TRANSMITTER	5	Nos
SS316 1/2 NPTF 3 WAY MANIFOLD T TYPE INT	30	Nos
SS316 1/2 NPTF 2 WAY MANIFOLD LINE MOUNT	5	Nos
SS304 TAG PLATES 25MMx90MM WITH 1 HOLE	39	Nos
6X1.5 Sqmm SINGLE CORE CABLE	10	Mtr
2X1.5 Sqmm CORE POWER CABLE	10	Mtr
O2 ANALYZER SENSOR	2	Nos
PURGE ROTA METER 1/4" NPTF	2	Nos
AFR WITHOUT GAUGE 1/4" NPTF	1	Nos
TEMPERATURE TRANSMITTER	2	Nos
FD FAN	1	Nos
FD FAN	1	Nos
ID FAN	1	Nos
OIL CENTRIFUSE - MODULE MAB103+2	1	Set
APH FABRICATED GIRDER 500X175X8X25X6800	2	Nos
APH FABRICATED BEAM 300X175X8X12X2174	2	Nos
APH FABRICATED CHANNEL 200X2174	2	Nos
APH PLATE 167X2192X5THK	2	Nos
APH FABRICATED GIRDER 500X175X8X25X6800	2	Nos
APH FABRICATED BEAM 300X175X8X12X2174	2	Nos
APH FABRICATED CHANNEL 200X2174	2	Nos
APH PLATE 167X2192X5THK	2	Nos
ESP TO ID FAN DUCT	52	Nos
STORAGE TANK ASSEMBLY (DEAERATOR)	22	Nos
ON OFF BUTTERFLY VALVE SIZE 200NB	3	Nos
ON OFF BUTTERFLY VALVE SIZE 200NB	3	Nos
HOPPER 1 & 2 BELOW ECO & APH	1	Pcs
HOPPER 3 BELOW ECO & APH	1	Pcs
SLIDE GATE ASSLY (350)	1	Pcs
SLIDE GATE 400X400 Sq.	1	Pcs
ID FAN	1	Pcs
ID FAN	1	Pcs
ID FAN	1	Pcs
ID FAN	1	Pcs
PA FAN SUCTION DUCT	13	Nos
PA FAN SUCTION DUCT	13	Nos
ASSEMBLY OF HOPPER BELOW WD	1	Pcs
DETAILS OF HOPPER BELOW WD	1	Pcs
SLIDE GATE 400X400 Sq.	1	Pcs
SLIDE GATE ASSLY (350)	1	Pcs
ASSEMBLY OF HOPPER BELOW WD	1	Pcs
DETAILS OF HOPPER BELOW WD	1	Pcs
SLIDE GATE 400X400 Sq.	1	Pcs
SLIDE GATE ASSLY (350)	1	Pcs
CBD TANK	1	Nos
CBD TANK	1	Nos
DETAILS OF BEAM AT LVL +6000	1	Nos
DETAILS OF BEAM AT LVL +8400	1	Nos
DETAILS OF BEAM AT LVL +22800 & 25295.25200	1	Nos
DETAILS OF BEAM AT LVL +10800	1	Nos
DETAILS OF BEAM AT LVL +13280	1	Nos
DETAILS OF BEAM AT LVL +15600	1	Nos
DETAILS OF BEAM AT LVL +18000	1	Nos
DETAILS OF BEAM AT LVL +20400	1	Nos

ELECTRONIC DRUM LEVEL INDICATOR	1	Set
ELECTRONIC DRUM LEVEL INDICATOR	1	Set
SAFETY RELIEF VALVE - SRV-161	1	Nos
SAFETY RELIEF VALVE - SRV-162	1	Nos
SAFETY RELIEF VALVE - SRV-163	1	Nos
SAFETY RELIEF VALVE - SRV-165	1	Nos
SAFETY RELIEF VALVE - SRV-166	1	Nos
SAFETY RELIEF VALVE - SRV-167	1	Nos
SAFETY RELIEF VALVE - SRV-164	1	Nos
PLATFORM BRACKET PF-1 TO PF-8	54	Nos
LADDER CL-1 TO CL-6	6	Nos
WASTE WATER TREATMENT	1	Lot
PLATFORM PF-01 TO PF-5	8	Nos
RAILLING -PF-1 TO 5	13	Nos
SERVICE AIR RECEIVER 5M3	1	Set
INSTRUMENT AIR RECEIVER 3M3	1	Set
ASH HANDLING AIR RECEIVER 5M3	1	Set
CONICAL & CYLINDRICAL SELF SUPPORTED 75 MTR HIGHT STEEL CHIMNEY	1	Nos
WASTE WATER TREATMENT	1	Lot
CAST ASH DOOR 416X396-142	4	Nos
CAST FIRE DOOR 416X396-143	8	Nos
CAST ASH DOOR 416X396-143	8	Nos
CAST FIRE DOOR 416X396-142	5	Nos
CAST SWING CHECK VALVE 300MM 150# - MPS-VC-156	1	Nos
CAST PS GATE VALVE 200MM 1500# RB - MSS-VG-016	1	Nos
CAST LOW GATE VALVE 350MM 150# BW - MPS-VG-158	1	Nos
CAST LOW GATE VALVE 350MM 150# BW - MPS-VG-125	1	Nos
CAST LOW GATE VALVE 300MM 150# BW - MPS-VG-157	1	Nos
CONICAL & CYLINDRICAL SELF SUPPORTED 75 MTR HIGHT STEEL CHIMNEY	1	Nos
IBR CS PIPE FITTINGS	870	Nos
INTEGRAL & NON INTEGRAL PIPING SUPPORTS	1	Lot
INTEGRAL & NON INTEGRAL PIPING SUPPORTS	1	Lot
CONTROL VALVE 11 FCV-020A 11 FCV-020B 11 FCV-010A		

100NB MS ERW PIPES "C" CLASS IS - 1239 (H)	271.310	Mtr
80NB MS ERW PIPES "C" CLASS IS - 1239 (H)	150.740	Mtr
80NB MS ERW PIPES "C" CLASS IS - 1239 (H)	223.070	Mtr
100NB MS ERW PIPES "B" CLASS IS - 1239 (S)	96.470	Mtr
80NB MS ERW PIPES "B" CLASS IS - 1239 (S)	18.08	Mtr
50NB MS ERW PIPES "B" CLASS IS - 1239 (S)	78.38	Mtr
40NB MS ERW PIPES "B" CLASS IS - 1239 (S)	186.89	Mtr
15NB MS ERW PIPES "C" CLASS IS - 1239 (S)	138.68	Mtr
40NB GI PIPE "B" CLASS IS - 1239 SWS(H)	108.53	Mtr
15NB GI PIPE "C" CLASS IS - 1239 SWS(H)	168.83	Mtr
HOPPER 1 & 2 BELOW ECO & APH	1	Pcs
HOPPER 3 BELOW ECO & APH	1	Pcs
SLIDE GATE 400X400 Sq	1	Pcs
SLIDE GATE ASSLY (350)	1	Pcs
PLANUM CHAMBER	7	Nos
PLANUM CHAMBER	7	Nos
AUTO RECIRCULATION VALVE - ARC VALVE	2	Nos
AUTO RECIRCULATION VALVE - ARC VALVE	2	Nos
AIR DISTRIBUTION PLATE - BED PLATE1, 2 & 3	3	Nos
PIPE 150NB SCH40x400 LG & PLATE - OD 220X ID 170X 10THK	6	Nos
FLAT 40X10THL X 3880 & FLAT 50X6THKX3880 LG	2	Nos
AIR DISTRIBUTION PLATE - BED PLATE1, 2 & 3	3	Nos
PIPE 150NB SCH40x400 LG & PLATE - OD 220X ID 170X 10THK	6	Nos
FLAT 40X10THL X 3880 & FLAT 50X6THKX3880 LG	2	Nos
APH TO PLENUM DUCT	9	Nos
APH TO PLENUM DUCT	41	Nos
APH TO PLENUM DUCT	48	Nos
APH TO PLENUM DUCT	5	Nos
APH TO PLENUM DUCT	6	Nos
RAPTURE DISK 14"	2	Nos
LEVEL TRANSMITTER - 10-LT-510A, 10-LT-510B & 10-LT-510C	3	Nos
600NB CONICAL STRAINER	3	Nos
350NB CONICAL STRAINER	2	Nos
100NB CONICAL STRAINER	2	Nos
METAL SEATED KNIFE GATE VALVE	3	Nos
METAL SEATED KNIFE GATE VALVE	3	Nos
METAL SEATED KNIFE GATE VALVE	3	Nos
METAL SEATED KNIFE GATE VALVE	3	Nos
EXPANSION JOINT	5	Nos
SILO EXTRACTION POWER CUM CONTROL PANEL	1	Nos
WATER COOLED FEED HOPPER WITH SCREEN	6	Nos
FIELD CONTROL AND SIGNAL CABLE	1	Set
CABLE TRAY & HARDWARE	1	Set
JUNCTION BOX	1	Nos
INTERMEDIATE PIPE SUPPORT STRUCTURE	1	Set
FOUNDATION	1	Set
TANK DIA 10.85 (THERMAX, GFS, 602 KI)	1	Nos
ADOPTER CUM DOWNCOMER PIPE WITH FLUIDISING PAD	8	Nos
8/8 4 ASH VESSEL	4	Nos
ROTARY VANE FEEDER - 50 TPH	2	Nos
TWIN SHAFT ASH CONDITIONER - 50 TPH	1	Nos
GATE VALVE 6" 900# B/W ASME B16.25-2012 TRIM 5	1	Nos
CHECK VALVE GATE VALVE - DIFFERENT SIZES	70	Nos
GATE VALVE 6" 900# B/W ASME B16.25-2012 TRIM 5	1	Nos
CHECK VALVE GATE VALVE - DIFFERENT SIZES	16	Nos
MOTOR E3HX280SMB6 60HP 1000RPM FOOT 415V 50HZ TEFC	2	Nos
MOTOR E3HX280SMC4 100HP 1500RPM FOOT 415V 50HZ TEFC IE3	2	Nos
MOTOR E3BA315MLA4 180HP 1500RPM FOOT MOUNTED 415V 50HZ TEFC	2	Nos
MOTOR E3BA355MLA2 370HP 3000RPM FOOT 415V 50HZ TEFC	4	Nos
CHIMNEY FOUNDATION BOLT DIA 60X1850 LG WITH NUT LOCK NUT & WASHER	64	Set
SS FERRULE	1460	Nos
SS FERRULE		Nos
AIR BLOWER FOR FILTER	100	%
RESIN FOR MB (1540+ 1540)	50	%
ANTISCALANT DOSING PUMP	100	%
ACID DOSING PUMP	100	%
DEGASSER AIR BLOWER	100	%

100NB MS ERW PIPES "C" CLASS IS - 1239 (H)	271.310	Mtr
80NB MS ERW PIPES "C" CLASS IS - 1239 (H)	150.740	Mtr
80NB MS ERW PIPES "C" CLASS IS - 1239 (H)	223.070	Mtr
100NB MS ERW PIPES "B" CLASS IS - 1239 (S)	96.470	Mtr
80NB MS ERW PIPES "B" CLASS IS - 1239 (S)	18.08	Mtr
50NB MS ERW PIPES "B" CLASS IS - 1239 (S)	78.38	Mtr
40NB MS ERW PIPES "B" CLASS IS - 1239 (S)	186.89	Mtr
15NB MS ERW PIPES "C" CLASS IS - 1239 (S)	138.68	Mtr
40NB GI PIPE "B" CLASS IS - 1239 SWS(H)	108.53	Mtr
15NB GI PIPE "C" CLASS IS - 1239 SWS(H)	168.83	Mtr
HOPPER 1 & 2 BELOW ECO & APH	1	Pcs
HOPPER 3 BELOW ECO & APH	1	Pcs
SLIDE GATE 400X400 Sq.	1	Pcs
SLIDE GATE ASSLY (350)	1	Pcs
PLANUM CHAMBER	7	Nos
PLANUM CHAMBER	7	Nos
AUTO RECIRCULATION VALVE - ARC VALVE	2	Nos
AUTO RECIRCULATION VALVE - ARC VALVE	2	Nos
AIR DISTRIBUTION PLATE - BED PLATE1, 2 & 3	3	Nos
PIPE 150NB SCH40x400 LG & PLATE - OD 220X ID 170X 10THK	6	Nos
FLAT 40X10THL X 3880 & FLAT 50X6THKX3880 LG	2	Nos
AIR DISTRIBUTION PLATE - BED PLATE1, 2 & 3	3	Nos
PIPE 150NB SCH40x400 LG & PLATE - OD 220X ID 170X 10THK	6	Nos
FLAT 40X10THL X 3880 & FLAT 50X6THKX3880 LG	2	Nos
APH TO PLENUM DUCT	9	Nos
APH TO PLENUM DUCT	41	Nos
APH TO PLENUM DUCT	48	Nos
APH TO PLENUM DUCT	5	Nos
APH TO PLENUM DUCT	6	Nos
RAPTURE DISK 14"	2	Nos
LEVEL TRANSMITTER - 10-LT-510A, 10-LT-510B & 10-LT-510C	3	Nos
600NB CONICAL STRAINER	3	Nos
350NB CONICAL STRAINER	2	Nos
100NB CONICAL STRAINER	2	Nos
METAL SEATED KNIFE GATE VALVE	3	Nos
METAL SEATED KNIFE GATE VALVE	3	Nos
METAL SEATED KNIFE GATE VALVE	3	Nos
METAL SEATED KNIFE GATE VALVE	3	Nos
EXPANSION JOINT	5	Nos
SILO EXTRACTION POWER CUM CONTROL PANEL	1	Nos
WATER COOLED FEED HOPPER WITH SCREEN	6	Nos
FIELD CONTROL AND SIGNAL CABLE	1	Set
CABLE TRAY & HARDWARE	1	Set
JUNCTION BOX	1	Nos
INTERMEDIATE PIPE SUPPORT STRUCTURE	1	Set
FOUNDATION	1	Set
TANK DIA 10.85 (THERMAX, GFS, 602 KI)	1	Nos
ADOPTER CUM DOWNCOMER PIPE WITH FLUIDISING PAD	8	Nos
8/8:4 ASH VESSEL	4	Nos
ROTARY VANE FEEDER - 50 TPH	2	Nos
TWIN SHAFT ASH CONDITIONER - 50 TPH	1	Nos
GATE VALVE 6" 900# B/W ASME B16.25-2012 TRIM 5	1	Nos
CHECK VALVE GATE VALVE - DIFFERENT SIZES	70	Nos
GATE VALVE 6" 900# B/W ASME B16.25-2012 TRIM 5	1	Nos

AGITATOR	100	%
MB AIR BLOWER	100	%
pH DOSING PUMP	100	%
ALKALI UNLOADING PUMP	100	%
ACID UNLOADING PUMP	100	%
pH TRANSMITTER	33	%
CONDUCTIVITY TRANSMITTER	100	%
IMPULSE TUBING	100	%
MOTORS	67	%
VALVE	50	%
SMBS DOSING PUMP	100	%
WATER DRUM	1	Nos
MH GASKET	6	Nos
FRONT WATER WALL PANEL	1	Nos
FRONT WATER WALL PANEL	1	Nos
FRONT LOOSE TUBE P. NO. 5/1	18	Nos
FRONT LOOSE TUBE P. NO. 5/2	17	Nos
REAR PANEL LOOSE TUBE P. NO.-3/1	18	Nos
REAR PANEL LOOSE TUBE P. NO.-3/2	17	Nos
REAR PANEL ASSLY	1	Nos
REAR PANEL ASSLY	1	Nos
REAR PANEL ASSLY	1	Nos
REAR PANEL ASSLY	1	Nos
RH SIDE WATER WALL PANEL ASSLY	1	Nos
RH SIDE WATER WALL PANEL ASSLY	1	Nos
CONTROL CABLE 2Cx1.5Sqmm	2666	Mtr
SIGNAL CABLE 1 Px1.0Sqmm 7ST	3857	Mtr
RTD CABLE 1 TRIADx1.0Sqmm	1358	Mtr
COMP CABLE 1P 18AWG K TYPE	929	Mtr
POWER CABLE 3Cx2.5Sqmm	301	Mtr
TIGHT SHUTOFF DAMPER 1050X5251/S	2	Nos
TIGHT SHUTOFF DAMPER 1050X5251/S	2	Nos
ERW PRECISION TUBE (AJR PRE-HEATER FC) 63.50X2.35X7200MM	615	Nos
ERW PRECISION TUBE (CORTON STEEL) 63.50X2.35X7200MM	125	Nos
ERW PRECISION TUBE (AIR PRE-HEATER FC) 63.50X2.35X7200MM	615	Nos
ERW PRECISION TUBE (CORTON STEEL) 63.50X2.35X7200MM	125	Nos
STEAM DRUM - ID 1375x70 THK	1	Nos
MANHOLE GASKET	6	Nos
PVC PIPE 140 OD	30	Mtr
SELF DRILING SCREW M8X30	2760	Nos
SELF TAP SCREW 10X13	5150	Nos
PVC COUPLING 140 DIA	8	Nos
PVC ELBOW 1.5D 140OD	4	Nos
PVC ELBOW 45DEG 140OD	4	Nos
PVC PIPE 140 OD	30	Mtr
SELF DRILING SCREW M8X30	2400	Nos
SELF TAP SCREW 10X13	4100	Nos
PVC COUPLING 140 DIA	8	Nos
PVC ELBOW 1.5D 140OD	4	Nos
PVC ELBOW 45DEG 140OD	4	Nos
DEARATOR VAPOR TANK	1	Nos
PLATFORM NO 1	1	Nos
AIRVENT WITH ORIFACE PIPE	1	Nos
HEXAGONAL NUT BOLT WASHER M16X65	16	Nos
HEXAGONAL NUT BOLT WASHER M16X85	4	Nos
WC6 GLOBE VALVE BOLTED BONNET CLASS 300# ENDS FLANGED WITH MOTOR OPERATED WITH IBR TRIM 5	1	Nos
CAST STEEL (WCB) GATE VALVE CLASS 150# ENDS FLANGED WITH MOTOR OPERATED WITH STELLITED SEATRING S.S.316 SERVICE VECCUM + DEEP GLAND PACKING	1	Nos
CAST STEEL (WCB) GATE VALVE CLASS 150# ENDS FLANGED WITH MOTOR OPERATED	1	Nos
CAST STEEL (WCB) GATE VALVE CLASS 300# ENDS FLANGED WITH MOTOR OPERATED	1	Nos
CAST STEEL (WCB) GATE VALVE CLASS 150# ENDS FLANGED WITH MOTOR OPERATED	1	Nos
BUNKER WALL	3	Nos
BUNKER WALL	1	Nos
BUNKER WALL	1	Nos
HOPPER	2	Nos
ASTRONOMICAL STREET LIGHT PANEL	1	Nos
2 MP METAL BODY PTZ CAMERA DS-2DE5220IW-AE 20x ZOOM	1	Nos
POE SWITCH 4 PORT GS-305P	1	Nos
LHS WW PANEL	2	Nos

ARMoured PVC CABLE 6PX16.0 AWG (KX) PVC I/S O/S	315	Mtr
HOPPER NO.-HW-1, HW-8, HW-9 & HW-13	4	Nos
BUNKER WALL BW-2-3, BW-3-3, BW-3-4	3	Nos
LH SIDE WATER WALL PANEL	1	Nos
LH SIDE WATER WALL PANEL	1	Nos
TEMPERATURE CONTROL VALVE - TCV 12" #300 BB WCB BW.20 PAL IBR	1	Nos
TEMPERATURE CONTROL VALVE - TCV 8" #300 BB WC6 BW 40 PAL IBR	1	Nos
TEMPERATURE CONTROL VALVE - TCV 16" #150 BB WCB BW SCH20 PAL VCD IBR	1	Nos
RUBBER EXPANSION JOINT WITH RETAINER RING,EXPANSION FLANGE & FASTNER 600MM	3	Nos
RUBBER EXPANSION JOINT WITH RETAINER RING,EXPANSION FLANGE & FASTNER 350MM	2	Nos
VIBRATION MONIORING SYSTEM	10	Nos
INTEGRAL PIPING - 1	1	Set
INTEGRAL PIPING - 2	1	Set
INTEGRAL PIPING - 3	1	Set
INTEGRAL PIPING - 4	1	Set
INTEGRAL PIPING - 5	1	Set
INTEGRAL PIPING - 6	1	Set
INTEGRAL PIPING - 1	1	Set
INTEGRAL PIPING - 2	1	Set
INTEGRAL PIPING - 3	1	Set
INTEGRAL PIPING - 4	1	Set
INTEGRAL PIPING - 5	1	Set
INTEGRAL PIPING - 6	1	Set
VIBRATION MONIORING SYSTEM	1	Nos
IMPECTOR ASSEMBLED	1	Nos
DRIVE BASE FRAME ASSEMBLED	1	Nos
MOTOR 75 KW	1	Nos
ZERO SPEED SWITCH WITH BRACKET & SENSOR	1	Nos
V-BELTS SPC 6300	1	Nos
DRIVE GUARD	1	Nos
M30X600 LG FOUNDATION BOLT, NUT, WASHER & LOCK NUT	22	Nos
ASSLY OF ECO DUCT PANEL 1 TO 14	21	Nos
FLANGE ISA 75X6	1	Nos
TE CONNECTION 40NB	1	Nos
TG CONNECTION 40NB	1	Nos
PT CONNECTION 40NB	1	Nos
MAIN HOLE HANDLE BAR 20MM	1	Nos
GI NUT BOLT M12X60	20	Nos
ASSLY OF ECO DUCT PANEL 1 TO 14	21	Nos
FLANGE ISA 75X6	1	Nos
TE CONNECTION 40NB	1	Nos
TG CONNECTION 40NB	1	Nos
PT CONNECTION 40NB	1	Nos
MAIN HOLE HANDLE BAR 20MM	1	Nos
GI NUT BOLT M12X60	20	Nos
AIR SET SHAVO/11-4SN-200M-M6KN-NS WITH PRESSURE GAUGE	1	Nos
PRESSURE GAUGE FOR POSITIONER	3	Nos
GASKET SET(GI AND PACKING, BODY & SEAT GASKET SET) FOR 4162 1/3 INCH, 900#	1	Nos
AIR SET SHAVO/11-4SN-200M-M6KN-NS WITH PRESSURE GAUGE	1	Nos
PRESSURE GAUGE FOR POSITIONER	3	Nos
GASKET SET(GLAND PACKING, BODY & SEAT GASKET SET) FOR 4162 1/3 INCH, 900#	1	Nos
HDPE TARPAULINS GSM 250	10	Nos
FRONT WATER WALL PANEL	1	Nos
FRONT WATER WALL PANEL	1	Nos
FRONT WATER WALL PANEL	1	Nos
FRONT WATER WALL PANEL	1	Nos
BUNKER WALL BW-1-1, BW-3-1, BW-1-2, BW-3-2, HW-7	6	Nos
PLATE 10X221X7148MM LONG	1	Nos
PLATE 10X136X5100MM LONG	1	Nos
STEAM DRUM - ID 1375x70 THK	1	Nos
MH GASKET	1	Nos
WATER DRUM	1	Nos
MH GASKET	1	Nos
BOILER BANK TUBE-7, 8, 9, 10, 11, 12, 13 & 14	1	Nos
CONTROL VALVE 11-FCV-110 SR No.181530	1	Nos
CONTROL VALVE 11-TCV-120 SR No.181531	1	Nos
CONTROL VALVE 11-LCV-102 SR No.181532	1	Nos

CONTROL VALVE 11-HCV-205 SR No.181533	1	Nos
CONTROL VALVE 10-LCV-150 SR No.181214	1	Nos
CONTROL VALVE 12-FCV-110 SR No.181534	1	Nos
CONTROL VALVE 12-TCV-120 SR No.181535	1	Nos
CONTROL VALVE 12-HCV-205 SR No.181536	1	Nos
BUNKER LOOSE PLATE	13	Nos
BED MATERIAL & LIME STONE BUNKER	5	Nos
BED MATERIAL & LIME STONE BUNKER	5	Nos
RH SIDE WATER WALL PANEL ASSLY	1	Nos
RH SIDE WATER WALL PANEL ASSLY	1	Nos
PURLIN	7	Nos
SIDE RUNNER	68	Nos
PURLIN	14	Nos
SIDE RUNNER	123	Nos
LIME & BED MATERIAL BUNKER	14	Nos
LIME & BED MATERIAL BUNKER LOOSE PART	48	Nos
LIME & BED MATERIAL LEG	18	Nos
BUNKER WALL	34	Nos
BUNKER HOPPER	30	Nos
PIPE 80NB	1.5	Mtr
PIPE 50NB	1.5	Mtr
PIPE 100NB	1.5	Mtr
MS HEX NUT BOLT, WAHSER M10 x 30 L	70	Nos
BALL VALVE 80NB 150# - SAS-VB-801,802,803,820,823,821,822	7	Nos
BALL VALVE 50NB 150# - IAS-VB-901,904, SAS-VB-819	3	Nos
BALL VALVE 15NB 800# A105/CF8/PTFE - SAS-VB-804, 805,806,807,809,811,812,813,814,815,817,818,819,IAS-VB-905,903	20	Nos
BALL VALVE 40NB 800# A105/CF8/PTFE - IAS-VB-906,913,914,915,916	5	Nos
BALL VALVE 25NB 800# A105/CF8/PTFE - IAS-VB-908,910,911,917,918,919	11	Nos
INTERVALVE IVSCC 50NB ANSI 150# A216 GR. WCB +HF 13% CR/CS+13%CR - IAS-VC-902	1	Nos
BEAM	3	Nos
PURLIN	18	Nos
SIDE RUNNER	60	Nos
BEAM	3	Nos
PURLIN	21	Nos
SIDE RUNNER	78	Nos
MS PLATE 8MM	510	Kg
MS PLATE 10MM	650	Kg
MS PLATE 12MM	780	Kg
MS PLATE 16MM	1040	Kg
CABLE GLAND CIW 01S 1/2" NPT	100	Nos
CABLE GLAND CIW 01S 1/2" NPT	75	Nos
CABLE GLAND CIW 01S 1/2" NPT	40	Nos
CABLE GLAND CIW 01S 1/2" NPT	27	Nos
CABLE GLAND CIW 01S 1/2" NPT	8	Nos
CABLE GLAND CIW 01S 1/2" NPT	85	Nos
CABLE GLAND CIW 01S 1/2" NPT	70	Nos
CABLE GLAND CIW 01S 1/2" NPT	30	Nos
CABLE GLAND CIW 01S 1/2" NPT	25	Nos
CABLE GLAND CIW 01S 1/2" NPT	8	Nos
TRANSMITTER AMU OXYTRACE	1	Nos
SWANSENSOR OXYTRACE G	1	Nos
ANALYZER AMI SILICA	2	Nos
MONITOR AMI HYDRAZINE	1	Nos
PRESSURE GAUGE	61	Nos
TEMPERATURE GAUGE WITH THERMOWELL	17	Nos
RTD ASSEMBLY WITH THERMOWELL	22	Nos
PRESSURE GAUGE	11	Nos
GAS FILLED DIAL THERMOMETER WITH THERMOWELL	8	Nos
PRESSURE GAUGE	15	Nos
GAS FILLED DIAL THERMOMETER WITH THERMOWELL	10	Nos
HOPPER WALL	24	Nos
BED MATERIAL & LIME STONE BUNKER	10	Nos
BED MATERIAL & LIME STONE BUNKER	9	Nos
HARDWARE	1	Pcs
ROD GATE WITH SLIDING GATE ASSLY	6	Nos
POCKING PIPE 150 NB	12	Set
HARDWARE	1	Pcs
POCKING PIPE 150 NB	2	Set
ROD GATE WITH SLIDING GATE ASSLY	2	Pcs

HDPE TARPAULINS GSM 250	10	Nos
GI BOLT M12X40	256	Nos
GI NUT M12	256	Nos
GI PLAIN WASHER M12	256	Nos
HOOK-UP DIA. FOR THERMOSTAT	1	Set
GI BOLT M12X50	224	Nos
SOLENOID OPERATED SERVICE AIR ISOLATION VALVE 25NB	1	Nos
SOLENOID OPERATED SERVICE AIR ISOLATION VALVE 50NB	1	Nos
GI M16 STUD	111	Nos
SOLENOID OPERATED SERVICE AIR ISOLATION VALVE 25NB	1	Nos
SOLENOID OPERATED SERVICE AIR ISOLATION VALVE 50NB	1	Nos
BLOW DOWN VALVE 25MM 1500#ASTM A105 S/W	2	Nos
BLOW DOWN VALVE 40MM 1500#ASTM A105 S/W	2	Nos
DRUM LEVEL GAUGE MODEL 300L4-5 PORT	2	Nos
GLOBE VALVE 25MM 800#	8	Nos
HIGHT INTENSITY LAMP ILLUMINATOR	2	Nos
360W POWER PACK	2	Nos
TORQUE WRENCH WITH SUITABLE SOCKET	2	Nos
OPERATION & MAINTENANCE MANUAL	1	Nos
DRUM LEVEL GAUGE MODEL 300L4-5 PORT	2	Nos
GLOBE VALVE 25MM 800#	8	Nos
HIGHT INTENSITY LAMP ILLUMINATOR	2	Nos
360W POWER PACK	2	Nos
TORQUE WRENCH WITH SUITABLE SOCKET	2	Nos
OPERATION & MAINTENANCE MANUAL	1	Nos
11-FT-120 OPA+RTJ 25MM 900#	1	Nos
NOZZLE 11-FE-110 80MM SCH-80	1	Nos
NOZZLE 11-FE-206 150MM SCH-120	1	Nos
11-FT-120 OPA+RTJ 25MM 900#	1	Nos
NOZZLE 11-FE-110 80MM SCH-80	1	Nos
NOZZLE 11-FE-206 150MM SCH-120	1	Nos
DIFFERENT SIZE OF VALVES, GATE, GLOBE, CHECK 15NB TO 400NB	301	Nos
LOOP POWER INDICATOR - μ CS 2211-10-O10-D2-RAN-EX	3	Nos
LOOP POWER INDICATOR - μ CS 2211-10-O10-D2-RAN-EX	3	Nos
DIFFERENT SIZE OF VALVES, GATE, GLOBE, BALL, BUTTERFLY, CHECK, 25NB TO 200NB	35	Nos
ACTUATOR LINK & MOUNTING ARRANGEMENT	1	Nos
ACTUATOR/HV-001/REGULATING	1	Nos
ACTUATOR/UV-002/ON-OFF	1	Nos
ACTUATOR/UV-003/ON-OFF	1	Nos
ACTUATOR/FCV-021/REGULATING	1	Nos
BUTTERFLY DAMPER(600 I.D.)	3	Nos
BUTTERFLY DAMPER(650 I.D.)	1	Nos
DAMPER WITH ROTARY ACTUATOR 300NB	3	Nos
ACTUATOR SUPPORT 600 I.D.	3	Nos
ACTUATOR LINK & MOUNTING ARRANGEMENT	1	Nos
ACTUATOR/HV-001/REGULATING	1	Nos
ACTUATOR/UV-002/ON-OFF	1	Nos
ACTUATOR/UV-003/ON-OFF	1	Nos
ACTUATOR/FCV-021/REGULATING	1	Nos
BUTTERFLY DAMPER(600 I.D.)	3	Nos
BUTTERFLY DAMPER(650 I.D.)	1	Nos
DAMPER WITH ROTARY ACTUATOR 300NB	3	Nos
ACTUATOR SUPPORT 600 I.D.	3	Nos
PRESSURE PARTS SUPPORT	1	Set
SLIDING SUPPORT FOR MAIN DOWN COMER	1	Set
GUIDE ARRENGEMENT FOR AIR PREHEATER	1	Set
PRESSURE PARTS SUPPORT	1	Set
SLIDING SUPPORT FOR MAIN DOWN COMER	1	Set
GUIDE ARRENGEMENT FOR AIR PREHEATER	1	Set
AIRFOIL DUCT 1200X900 I/D	1	Nos
AIRFOIL DUCT 1200X900 I/D	1	Nos
CENTRIFUGAL PUMP WKT 40/4 + ACCESSORIES	3	Set
CENTRIFUGAL PUMP WKT 40/4 + ACCESSORIES	3	Set
UNDERBED FUEL FEEDING ARRANGEMENT	1	Set
SLIDE GATE 100NB	12	Set
UNDERBED FUEL FEEDING ARRANGEMENT	1	Set
SLIDE GATE 100NB	12	Set
APH TO ESP DUCT	10	Nos
APH TO ESP DUCT	10	Nos
APH TO ESP DUCT	8	Nos
APH TO ESP DUCT	8	Nos
ID FAN TO CHIMNEY DUCT	17	Nos

ID FAN TO CHIMNEY DUCT	18	Nos
ID FAN TO CHIMNEY DUCT	10	Nos
ID FAN TO CHIMNEY DUCT	9	Nos
FRONT WATER WALL PANEL - P42-3 & P42-4	2	Nos
FRONT PANEL LOOSE TUBE - 5/1=18 & 5/2=17	35	Nos
BOILER BANK TUBE-1, 2, 3, 4, 5, 6, 7, 8, 9 & 10	260	Nos
BOILER BANK TUBE-11, 12, 13, 14, 15, 16, 17, 18, 19 & 20	260	Nos
SECONDRY SUPER HEATER COIL - PA2-1	17	Nos
SECONDRY SUPER HEATER COIL - PA2-2	34	Nos
SECONDRY SUPER HEATER COIL - PA2-3	34	Nos
SECONDRY SUPER HEATER COIL - PA2-1	17	Nos
SECONDRY SUPER HEATER COIL - PA2-2	34	Nos
SECONDRY SUPER HEATER COIL - PA2-3	34	Nos
BOILER BANK TUBE-1, 2, 3, 4, 5 & 6	156	Nos
BOILER BANK TUBE-15, 16, 17, 18, 19 & 20	182	Nos
PRIMARY SUPER HEATER INLET HEADER - PA3-1	1	Nos
PRIMARY SUPER HEATER OUTLET HEADER - PA3-2	1	Nos
PRSECONDRY SUPER HEATER INLET HEADER - PA3-3	1	Nos
PRSECONDRY SUPER HEATER OUTLET HEADER - PA3-4	1	Nos
INBED SUPER HEATER OUTLET HEADER	1	Nos
INBED SUPER HEATER INLET HEADER	1	Nos
ATTEMPERATOR HEADER	1	Nos
MOTOR 75KW 4 POLE 415V	3	Nos
MOTOR 55KW 4 POLE 415V	2	Nos
PRIMARY SUPER HEATER COIL - PA1-1	32	Nos
PRIMARY SUPER HEATER COIL - PA1-2	2	Nos
INBED SUPER HEATER INNER/OUTLET COILS 6+6=12	1	Nos
INBED SUPER HEATER INNER/OUTLET COILS 6+6=12	1	Nos
PRIMARY SUPER HEATER COIL - PA1-1	32	Nos
PRIMARY SUPER HEATER COIL - PA1-2	2	Nos
PRIMARY SUPER HEATER INLET HEADER - PA3-1	1	Nos
PRIMARY SUPER HEATER OUTLET HEADER - PA3-2	1	Nos
PRSECONDRY SUPER HEATER INLET HEADER - PA3-3	1	Nos
PRSECONDRY SUPER HEATER OUTLET HEADER - PA3-4	1	Nos
INBED SUPER HEATER OUTLET HEADER	1	Nos
INBED SUPER HEATER INTLET HEADER	1	Nos
ATTEMPERATOR HEADER	1	Nos
HP DOSING SKID	1	Set
LP DOSING SKID	1	Set
FORGED GATE VALVE 25NB 1500# A182 GR F 304	1	Nos
FORGED GATE VALVE 3" 1500# A182 GR F 304	1	Nos
FORGED GATE VALVE 1 1/2" 800# A182 GR F 316L	1	Nos
FORGED GATE VALVE 3" 900# A216 GR WCB	2	Nos
SINGLE BELOW EXPANTION JOINT (500 I/S)	3	Nos
SINGLE BELOW EXPANTION JOINT (500 I/S)	3	Nos
SINGLE BELOW EXPANTION JOINT (1112 I/S)	1	Nos
SINGLE BELOW EXPANTION JOINT (1112 I/S)	1	Nos
SINGLE BELOW EXPANTION JOINT (498 X 1286 I/S)	2	Nos
SINGLF BELOW EXPANTION JOINT (498 X 1286 I/S)	2	Nos
SINGLE BELOW EXPANTION JOINT (1008 X 639 I/S)	4	Nos
SINGLE BELOW EXPANTION JOINT (951 X 700 I/S)	2	Nos
SINGLE BELOW EXPANTION JOINT (221 X 221 I/S)	2	Nos
SINGLE BELOW EXPANTION JOINT (221 X 221 I/S)	2	Nos
SINGLE BELOW EXPANTION JOINT (500 X 500 I/S)	3	Nos
SINGLE BELOW EXPANTION JOINT SLOTTED SHEAR	1	Nos
SINGLE BELOW EXPANTION JOINT (500 X 500 I/S)	3	Nos
SINGLE BELOW EXPANTION JOINT SLOTTED SHEAR	1	Nos
APH INTERMEDIATE DUCT	11	Nos
APH INTERMEDIATE DUCT	11	Nos
FD FAN TO APH DUCT	8	Nos
FD FAN TO APH DUCT	7	Nos
FUEL HANDLING PLANT SCREEN 85 TPH	1	Lot
COAL BANKER TOP COVER	1	Lot
COAL BANKER TOP COVER	1	Lot
BUTTERFLY VALVE - GEAR OPERATED	4	Nos
ECNOMISER INLET HEADER	1	Nos
ECNOMISER OUTLET HEADER	1	Nos
ECNOMISER ASSLY MODULE-II	1	Nos
ECNOMISER ASSLY MODULE-III	1	Nos
ECNOMISER INLET HEADER	1	Nos
ECNOMISER OUTLET HEADER	1	Nos
ECNOMISER ASSLY MODULE-II	1	Nos
ECNOMISER ASSLY MODULE-III	1	Nos
FD FAN TO APH DUCT	1	Lot
FD FAN TO APH DUCT	1	Lot
CRANE EOT, 35MT CAPACITY, AUXILIARY HOOK CAPACITY 5MT SPAN 14.01 - 16M V VFD CONTROL	1	Lot
ECNOMISER ASSLY MODULE-I	1	Nos

ECONOMISER ASSLY MODULE-I	1	Nos
WTP	1	Lot
INBED EVAPORATOR COIL ASSLY RH-I	1	Nos
INBED EVAPORATOR COIL ASSLY RH-I	1	Nos
INBED EVAPORATOR COIL ASSLY RH-II	1	Nos
INBED EVAPORATOR COIL ASSLY RH-II	1	Nos
SUPER HEATER INTERCONNECTING PIPING	16	Nos
SUPER HEATER INTERCONNECTING PIPING	2	Nos
REAR PANEL - (P45-3)	1	Set
BASE FRAME FOR ECONOMISER	1	Set
BASE FRAME FOR ECONOMISER	1	Set
BASE FRAME FOR ECONOMISER	1	Set
SECONDARY AIR DUCT	1	Lot
SECONDARY AIR DUCT	1	Lot
CS GLOBE VALVE S/W 25NB 800# A105	1	Nos
CS GLOBE VALVE S/W 40NB 800# A105	1	Nos
CS GLOBE VALVE S/W 15NB 800# A105	1	Nos
AS GLOBE VALVE S/W 15NB 800# A182	3	Nos
AS GLOBE VALVE S/W 50NB 1500# A182 F11	1	Nos
CS GATE VALVE S/W 25NB 800# A105	2	Nos
BALL VALVE F/E 80NB 150# 3 PIECE WCB	3	Nos
CHECK VALVE F/E 80NB 150# A216 WCB	1	Nos
BALL VALVE THREADED 15NB A105	5	Nos
PUMP	1	Nos
12-6 MM PEBBLES	43	Bag
6-2 MM CRUSHED GRAVELS	24	Bag
FINE SILEX	11	Bag
COARSE SILEX	11	Bag
BULK ALKAL STORAGE TANK	1	Nos
SS WIRE 6450MM	2	Nos
DRIVE SHAFT	4	Nos
GEAR BOX B-216	4	Nos
ELECTRIC MOTOR 60/1450	4	Nos
WATER QUALITY MONITORING SYSTEM - SWAS SAMPLING SYSTEM	2	Nos
ARMOURED PVC SIGNAL CABLE 1PX1.0 Sqmm	2691	Mtr
ARMOURED PVC SIGNAL CABLE 2PX1.0 Sqmm	692	Mtr
ARMOURED PVC SIGNAL CABLE 6PX1.0 Sqmm	1416	Mtr
ARMOURED PVC SIGNAL CABLE 12PX1.0 Sqmm	2381	Mtr
ARMOURED PVC SIGNAL CABLE 3PX1.0 Sqmm	1235	Mtr
ARMOURED PVC SIGNAL CABLE 37 CORE X 1.50 Sqmm	2445	Mtr
ARMOURED PVC SIGNAL CABLE 19 CORE X 1.50 Sqmm	1341	Mtr
ARMOURED PVC SIGNAL CABLE 12 CORE X 1.50 Sqmm	954	Mtr
ARMOURED PVC SIGNAL CABLE 24 CORE X 1.50 Sqmm	1502	Mtr
ARMOURED PVC SIGNAL CABLE 24 TRAUD X 1.0 Sqmm	1147	Mtr
CARRYING IDLER WITH FRAME. BELT WIDTH 650	113	Nos
TROUGHED IMPACT IDLER WITH FRAME. BELT WIDTH 650	38	Nos
SELF ALIGNING CARRYING IDLER WITH FRAME. BELT WIDTH 650	18	Nos
SELF ALIGNING RETURN ROLLER WITH FRAME. BELT WIDTH 650	18	Nos
TRANSITION IDLER (10.15.20.25.30 DEGREE) BELT WIDTH 650	25	Nos
IMPACT TRANSITION IDLER (10.20.25.30 DEGREE) BELT WIDTH 650	9	Nos
NON MEGNETIC IDLER SS 304. BELT WIDTH 650	6	Nos
CARRYING IDLER WITH FRAME. BELT WIDTH 600	83	Nos
TROUGHED IMPACT IDLER WITH FRAME. BELT WIDTH 500	27	Nos
SELF ALIGNING CARRYING IDLER WITH FRAME. BELT WIDTH 500	15	Nos
SELF ALIGNING RETURN ROLLER WITH FRAME. BELT WIDTH 500	15	Nos
TRANSITION IDLER (10.15.20.25.30 DEGREE) BELT WIDTH 500	24	Nos
IMPACT TRANSITION IDLER (10.25 DEGREE) BELT WIDTH 650	8	Nos
NON MEGNETIC IDLER SS 304. BELT WIDTH 500	8	Nos
AIRDRYER 2KD 050 B 500 CFM AIR COOLED (4701-0518.4700-0518)	2	Nos
AIR COMPRESSOR EG 75-10.5 V 415V / 50HZ	3	Nos
FILTER - FFE 0620	2	Nos
FILTER - PFE 0620	2	Nos
STEAM SILENCER	1	Nos

SILENCER SUPPORT	2	Nos
STEAM SILENCER	1	Nos
STEAM SILENCER	1	Nos
SILENCER SUPPORT	2	Nos
STEAM SILENCER	1	Nos
ARMoured PVC CABLE 7 CORE X 1.50 Sqmm	3556	Mtr
ARMoured PVC CABLE 3 CORE X 1.50 Sqmm	3524	Mtr
ARMoured PVC CABLE 1 TRAUD X 1.0 Sqmm	456	Mtr
ARMoured PVC CABLE 6 TRAUD X 1.0 Sqmm	445	Mtr
ARMoured PVC CABLE 8 TRAUD X 1.0 Sqmm	409	Mtr
ARMoured PVC CABLE 3 TRAUD X 1.0 Sqmm	744	Mtr
ARMoured PVC CABLE 3 CORE X 2.50 Sqmm	2674	Mtr
CRANF EOT, 35MT CAPACITY, AUXILIARY HOOK CAPACITY 5MT SPAN 14.01 - 16M V VFD CONTROL	1	Lot
MIXING NOZZLE ASSLY 100NB	12	Nos
CROSS 100NB	12	Nos
MIXING NOZZLE ASSLY 100NB	12	Nos
CROSS 100NB	12	Nos
ACCESS DOOR - DIA 475	1	Nos
ACCESS DOOR - DIA 475	1	Nos
MEEANITE CASTING - DIA 350X12MM	4	Nos
ROTARY FEEDER FOR LIMSTONE	1	Nos
ROTARY FEEDER FOR BED MATERIAL	1	Nos
ROTARY FEEDER FOR LIMSTONF	1	Nos
ROTARY FEEDER FOR BED MATERIAL	1	Nos
ROTARY FEEDER COAL	3	Nos
ROTARY FEEDER COAL	3	Nos
FLOW ELEMENT I.E. ORIFACE PLATE WITH FLANGE UNION - 4" 300#WNRF SCH-40	1	Nos
FLOW ELEMENT I.E. ORIFACE PLATE WITH FLANGE UNION - 10" 300#WNRF	1	Nos
FLOW ELEMENT I.E. ORIFACE PLATE WITH FLANGE UNION - 3" 300#WNRF SCH-40	1	Nos
FLOW ELEMENT I.E. ORIFACE PLATE WITH FLANGE UNION - 6" 300#WNRF SCH-10	1	Nos
FLOW ELEMENT I.E. ANUBAR (PITOT TUBE ASSLY) - 559X5MM THK	1	Nos
FLOW ELEMENT 16" 300#	1	Nos
FLOW ELEMENT 12" 300#	1	Nos
FLOW ELEMENT 8" SCH-120	1	Nos
FLOW ELEMENT 3" 300#	1	Nos
FLOW ELEMENT 8" 300#	1	Nos
FLOW ELEMENT 16" 300#	1	Nos
FLOW ELEMENT 8" SCH-120	1	Nos
TAKE UP PULLEY WITH BEARING & PLUMMER BLOCKS, BELT WIDTH 650	2	Nos
HEAD UP PULLEY WITH BEARING & PLUMMER BLOCKS, BELT WIDTH 650	5	Nos
TAIL PULLEY WITH BEARING & PLUMMER BLOCKS, BELT WIDTH 650	5	Nos
BEND PULLEY WITH BEARING & PLUMMER BLOCKS, BELT WIDTH 650	4	Nos
SNUB PULLEY WITH BEARING & PLUMMER BLOCKS, BELT WIDTH 650	5	Nos
BEND PULLEY WITH BEARING & PLUMMER BLOCKS, BELT WIDTH 500	2	Nos
HEAD UP PULLEY WITH BEARING & PLUMMER BLOCKS, BELT WIDTH 500	5	Nos
TAIL PULLEY WITH BEARING & PLUMMER BLOCKS, BELT WIDTH 500	5	Nos
TAKE UP PULLEY WITH BEARING & PLUMMER BLOCKS, BELT WIDTH 500	1	Nos
SNUB PULLEY WITH BEARING & PLUMMER BLOCKS, BELT WIDTH 500	6	Nos
RETURN IDLER WITH BRACKET, BELT WIDTH 650	64	Nos
RETURN IDLER WITH BRACKET, BELT WIDTH 500	50	Nos
INBED EVAPORATOR COIL ASSEMBLY RH-II	1	Pcs
INBED EVAPORATOR COIL ASSEMBLY LH-II	1	Pcs
INBED EVAPORATOR COIL ASSEMBLY RH-II	1	Pcs
INBED EVAPORATOR COIL ASSEMBLY LH-II	1	Pcs
PRIMARY SUPER HEATER COIL - PA1-3	1	Pcs
PRIMARY SUPER HEATER COIL - PA1-3	1	Pcs
PRIMARY SUPER HEATER COIL - PA1-4	1	Pcs
PRIMARY SUPER HEATER COIL - PA1-4	1	Pcs
HOOK SUPPORT	68	Nos
475 FIELD COMMUNICATOR, HART COMMUNICATOR	1	Set

DIFFERENTIAL PRESSURE INDICATOR (180)	2	Nos
DIFFERENTIAL PRESSURE INDICATOR (120)	1	Nos
PRESSURE SWITCH	2	Nos
PRESSURE SWITCH	1	Nos
PRESSURE SWITCH	1	Nos
CBD IBD PIPING	1	Set
CBD TANK MOUNTING	1	Set
FEED WATER DISCHARGE TO ECO INLET PIPING(SPRAY WATER PIPING)	1	Set
ISOMETRIC PIPING FOR MAKE-UP WATER PIPING	1	Set
ISOMETRIC PIPING FOR FEED WATER SUCTION, DEAERATOR OVER FLOW & DEAERATOR DRAIN PIPING TRIM PIPING	1	Set
MAKEUP WATER TO LPD & HPD PIPING	1	Set
MAIN STEAM & STRAT UP VENT PIPING	1	Set
SAMPLING PIPING	1	Set
DEAERATOR STEAM & PEGGING STEAM PIPING	1	Set
DEAERATOR TANK MOUNTING	1	Set
IBD TANK MOUNTING, OVER FLOW & QUENCHING WATER PIPING	1	Set
STEAM DRUM MOUNTING	1	Set
COMMON HEADER DRAIN PIPING	1	Set
CBD TANK VENT TO DEAERATOR	1	Set
CBD TO IBD PIPING	1	Set
SAFETY VALVE EXHAUST PIPING	1	Set
OPEN DRAIN PIPING	1	Set
HP DOSING PIPING	1	Set
LP DOSING PIPING	1	Set
SKEMATIC ARRANGEMENT FOR COOLING WATER SUPPLY & RETURN PIPING	1	Set
CBD & IBD PIPING	1	Set
FEED WATER DISCHARGE TO ECO INLET PIPING(SPRAY WATER PIPING)	1	Set
TRIM PIPING	1	Set
MAIN STEAM & STRAT UP VENT PIPING	1	Set
SAMPLING PIPING	1	Set
STEAM DRUM MOUNTING	1	Set
COMMON HEADER DRAIN PIPING	1	Set
SUPER HEATER INTERCONNECTING PIPING	1	Set
HP DOSING PIPING	1	Set
SAFETY VALVE EXHAUST PIPING	1	Set
OPEN DRAIN PIPING	1	Set
PUBLIC ADDRESS SYSTEM	1	Set
PRESSURE SWITCH	1	Nos
PRESSURE SWITCH	4	Nos
PRESSURE SWITCH	2	Nos
GA OF FURNACE STRUCTURE & CASING	1	Set
CONVECTION BANK CASING PANELS	1	Set
CONVECTION BANK CASING PANELS	1	Set
GA OF FURNACE STRUCTURE & CASING	1	Set
SEAL AIR DUCTING ROUND DAMPER	3	Nos
SEAL AIR DUCTING ROUND DAMPER	2	Nos
DAMPER 300NB X 5.0 THK	2	Nos
SEAL AIR DUCTING ROUND DAMPER	2	Nos
SEAL AIR DUCTING ROUND DAMPER	3	Nos
DAMPER 300NB X 5.0 THK	2	Nos
MULTI LOUVER DAMPER 900 X 1200	1	Nos
MULTI LOUVER DAMPER 900 X 1200	1	Nos
CONICAL & CYLINDRICAL SELF SUPPORTED 75 MTR HIGH STEEL CHIMNEY	1	Nos
ADD ACCESS PLATFORM @11500	1	Set
ADD ACCESS PLATFORM @3000	1	Set
ADD ACCESS PLATFORM @11500	1	Set
ADD ACCESS PLATFORM @3000	1	Set
ACCESS PLATFORM APH & ECO HOPPER	1	Set
BED ASH COOLER OUTLET INLET DUCT & SUPPORT	1	Set
BED ASH COOLER OUTLET INLET DUCT & SUPPORT	1	Set
CONICAL & CYLINDRICAL SELF SUPPORTED 75 MTR HIGH STEEL CHIMNEY	1	Nos
MS ANGLE 50X50X6MM	810	Kg
MS ISMC 100X50X6MM	276	Kg
MS ANGLE 50X50X6MM	30	Mtr
MS ANGLE 50X50X6MM	729	Kg
MS ISMC 100X50X6MM	276	Kg
MS ANGLE 50X50X6MM	20	Mtr
AIR BLASTERS	1	Set
SHELL TUBE TYPE H P HEATER	1	Set

ELECTRONIC DRUM LEVEL INDICATOR	1	Set
ELECTRONIC DRUM LEVEL INDICATOR	1	Set
SAFETY RELIEF VALVE - SRV-161	1	Nos
SAFETY RELIEF VALVE - SRV-162	1	Nos
SAFETY RELIEF VALVE - SRV-163	1	Nos
SAFETY RELIEF VALVE - SRV-165	1	Nos
SAFETY RELIEF VALVE - SRV-166	1	Nos
SAFETY RELIEF VALVE - SRV-167	1	Nos
SAFETY RELIEF VALVE - SRV-164	1	Nos
PLATFORM BRACKET PF-1 TO PF-8	54	Nos
LADDER CL-1 TO CL-6	6	Nos
WASTE WATER TREATMENT	1	Lot
PLATFORM PF-01 TO PF-5	8	Nos
RAILLING -PF-1 TO 5	13	Nos
SERVICE AIR RECEIVER 5M3	1	Set
INSTRUMENT AIR RECEIVER 3M3	1	Set
ASH HANDLING AIR RECLIVER 5M3	1	Set
CONICAL & CYLINDRICAL SELF SUPPORTED 75 MTR HIGH STEEL CHIMNEY	1	Nos
WASTE WATER TREATMENT	1	Lot
CAST ASH DOOR 416X396-142	4	Nos
CAST FIRE DOOR 416X396-143	8	Nos
CAST ASH DOOR 416X396-143	8	Nos
CAST FIRE DOOR 416X396-142	5	Nos
CAST SWING CHECK VALVE 300MM 150# - MPS-VC-156	1	Nos
CAST PS GATE VALVE 200MM 1500# RB - MSS-VG-016	1	Nos
CAST LOW GATE VALVE 350MM 150# BW - MPS-VG-158	1	Nos
CAST LOW GATE VALVE 350MM 150# BW - MPS-VG-125	1	Nos
CAST LOW GATE VALVE 300MM 150# BW - MPS-VG-157	1	Nos
CONICAL & CYLINDRICAL SELF SUPPORTED 75 MTR HIGH STEEL CHIMNEY	1	Nos
IBR CS PIPE FITTINGS	870	Nos
INTEGRAL & NON INTEGRAL PIPING SUPPORTS	1	Lot
INTEGRAL & NON INTEGRAL PIPING SUPPORTS	1	Lot
CONTROL VALVE -11-FCV-020A, 11-FCV-020B, 11-PCV-010A, 11-PCV-010B, 11-PCV-030A, 11-PCV-030B	6	Nos
CONTROL VALVE -12-FCV-020A, 12-FCV-020B, 12-PCV-010A, 12-PCV-010B, 12-PCV-030A, 12-PCV-030B	6	Nos
CONTROL VALVE 40-PCV-167 & 40-PCV-166	2	Nos
CONTROL VALVE 40-PCV-162 & 40-PCV-164,40-TCV-169,40- LCV-801,40-LCV-82,40-PCV-165,40-PCV-161,40-TCV-161,40- TCV-168,40-TCV-162,40-TCV-165,40-TCV-171,40-TCV-170,40- PCV-163,40-TCV-163,40-TCV-164	16	Nos
ARMOURED PVC CABLE 5 CORE X 1.50 Sqmm	406	Mtr
ARMOURED PVC CABLE 12 CORE X 1.50 Sqmm	360	Mtr
ARMOURED PVC CABLE 1P X 0.50 Sqmm	206	Mtr
ARMOURED PVC CABLE 1T X 0.50 Sqmm	103	Mtr
ARMOURED PVC CABLE 8T X 0.50 Sqmm	199	Mtr
ARMOURED PVC SIGNAL CABLE K TYPE 2C X 16SWG Sqmm	206	Mtr
ARMOURED PVC CABLE 3 CORE X 10.00 Sqmm	103	Mtr
ARMOURED PVC CABLE 3.5 CORE X 35.00 Sqmm	103	Mtr
ARMOURED PVC CABLE 3 CORE X 6.00 Sqmm	154	Mtr
BOILER MCC-1	1	Nos
BOILER MCC-2	1	Nos
FHS/AHS MCC	1	Nos
PANEL ACCESSORIES	1	Lot
COMMON MCC	1	Pcs
WTP MCC	1	Pcs
PANEL ACCESSORIES	1	Lot
EARTHING SYSTEM	1	Lot
LIGHTING PROTECTING SYSTEM	1	Lot
ELECTRICAL TRANSFORMER 2000KVA 11/0.433KV OIL FILLED	1	Set
ELECTRICAL TRANSFORMER 2000KVA 11/0.433KV OIL FILLED	1	Set
TURBINE CONTROL PANEL	1	Nos
TURBINE GAUGE PANEL	1	Nos
TURBINE CONTROL PANEL	1	Nos
TURBINE GAUGE PANEL	1	Nos
DIFFERENTIAL PRESSURE TRANSMITTER	1	Nos
GENERATOR RELAY PANEL	1	Nos
GENERATOR RELAY PANEL	1	Nos
LASCPTP PANEL	1	Nos

NGRP PANEL	1	Nos
MTRP PANEL	1	Nos
TL - BGM STARTER PANEL	1	Nos
DC MOT STATRTER	1	Nos
LASCPTP PANEL	1	Nos
NGRP PANEL	1	Nos
MTRP PANEL	1	Nos
TL - BGM STARTER PANEL	1	Nos
DC MOT STATRTER	1	Nos
SYNH PANEL - SYNCHONIZATION	1	Nos
TRUSS	1	Nos
STUB COLUMN	1	Nos
GUTTER	1	Nos
TRUSS LEVEL BRACING	1	Nos
STUB COLUMN	1	Nos
GUTTER	1	Nos
TRUSS LEVEL BRACING	1	Nos
PURLIN	1	Nos
SIDE RUNNER	1	Nos
FAFB-110-000-B 110V FC & FCBC + DCDB-3PH-FWFC-75A & 80A - UPS	1	Set
FAFB-110-000-B 110V FC & FCBC + DCDB-3PH-FWFC-75A & 80A - UPS	1	Set
110V/425AH MF BATTERY	1	Set
110V/425AH MF BATTERY	1	Set
ARMOURED PVC CABLE 3 CORE X 1.50 Sqmm	515	Mtr
ARMOURED PVC SIGNAL CABLE 1PX0.5 Sqmm	507	Mtr
ARMOURED PVC SIGNAL CABLE 1TX0.5 Sqmm	396	Mtr
ARMOURED PVC SIGNAL CABLE 2CX16SWG K TYPE	721	Mtr
GI FLAT 75X10MM	4800	Kg
GI FLAT 25X3MM	480	Kg
GI FLAT 25X6MM	240	Kg
GI FLAT 50X6MM	3850	Kg
GI FLAT 25X6MM	516	Kg
VFD CONTROL PANEL	1	Nos
VFD CONTROL PANEL	1	Nos
CONICAL & CYLINDRICAL SELF SUPPORTED 75 MTR HIGH STEEL CHIMNEY	1	Nos
IBR CS PIPE FITTINGS	233	Nos
IBR CS FLANGES	12	Nos
CONICAL & CYLINDRICAL SELF SUPPORTED 75 MTR HIGH STEEL CHIMNEY	1	Nos
CONICAL & CYLINDRICAL SELF SUPPORTED 75 MTR HIGH STEEL CHIMNEY	1	Nos
LADDER CL-8	1	Nos
PIPE 32NB X 1000MM	32	Nos
HEX BOLT M24X100MM	486	Nos
HEX NUT M24	486	Nos
WASHER M24	972	Nos
HR ALLUMINIUM PAINT	40	Lot
CONICAL & CYLINDRICAL SELF SUPPORTED 75 MTR HIGH STEEL CHIMNEY - 6	1	Nos
PLATFORM RAILLING PF-4 TO PF-8	15	Nos
CONICAL & CYLINDRICAL SELF SUPPORTED 75 MTR HIGH STEEL CHIMNEY - 8	1	Nos
PLATFORM PF-06 TO PF-8	4	Nos
LADDER CL-7	1	Nos
EJECTOR SYSTEM(SET) TWO STAGE TWIN-ELEMENT STEAM EJECTOR	1	Set
EXPENTON BELLOW-16", BW 1504	1	Nos
TEMPERATURE TRANSMITTER	6	Nos
TEMPERATURE TRANSMITTER	10	Nos
DIFFERENTIAL PRESSURE TRANSMITTER	4	Nos
GAUGE PRESSURE TRANSMITTER	2	Nos
PRESSURE TRANSMITTER	18	Nos
1/2" NPFT 3 WAY MANIFOLD T TYPE	9	Nos
1/2" NPFT 2 WAY MANIFOLD T TYPE	15	Nos
CS & AS IBR & NON PIPE FITTINGS	507	Nos
ELECTRIC MOTOR 160TEFC 15.00KW 4 POLE 415V	1	Nos
ELECTRIC MOTOR 160TEFC 9.30KW 4 POLE 415V	1	Nos
SPRING HANGER - STV-07, COSTANT SPRING SUPPORT - SS PAD 200Sqmm	1	Nos
SPRING HANGER - STV-07, COSTANT SPRING SUPPORT - SS PAD 200Sqmm	1	Nos
TEMPERATURE CONTROL VALVE - TCV-100	1	Nos

PRESSURE CONTROL VALVE - PCV-131	1	Nos
LEVEL CONTROL VALVE - LCV-301	1	Nos
LEVEL CONTROL VALVE - LCV-300	1	Nos
PRESSURE CONTROL VALVE - PCV-130	1	Nos
VERIABLE SPRING SUPPORT - FWL-01,FWL-02,SH-01,PC2-3,PC2-3,PC2-2,PC2-1	7	Nos
SPARE-01 M12	2	Nos
SPARE-02 M12	2	Nos
SPARE-03 M12	2	Nos
VERIABLE SPRING SUPPORT - FWL-01,FWL-02,SH-01,PC2-3,PC2-3,PC2-2,PC2-1	7	Nos
SPARE-01 M12	2	Nos
SPARE-02 M12	2	Nos
SPARE-03 M12	2	Nos
CAST GATE VALVE 16" - 150BW - MPS-VG-203	1	Nos
BELT WEIGHING SYSTEM - FXVA MODEL 650MM - COAL, CAPACITY 40 TPH	1	Set
BELT WEIGHING SYSTEM - FXVA MODEL 500MM - COAL, CAPACITY 40 TPH	1	Set
MS ERW PIPE 250X5.0MM THK IS-3589(S)	72.3	Mtr
MS ERW PIPE 350X5.0MM THK IS-3589(S)	85.06	Mtr
MS ERW PIPE 250X5.0MM THK IS-3589(S)	162.95	Mtr
CHECK VALVE DN250 ACW-VC-605 & ACW-VC-606	2	Nos
CHECK VALVE DN400 MCW-VC-504, MCW-VC-505 & MCW-VC-506	3	Nos
BUTTERFLY VALVE DN100 ACW-VU-645	1	Nos
BUTTERFLY VALVE DN250 ACW-VU-607 & ACW-VU-608	2	Nos
BUTTERFLY VALVE DN350 ACW-VU-601 & ACW-VU-602	2	Nos
BUTTERFLY VALVE DN400 MCW-VU-507, MCW-VU-508 & MCW-VU-509	3	Nos
BUTTERFLY VALVE DN600 MCW-VU-501, MCW-VU-502 & MCW-VU-503	3	Nos
MS ERW PIPE "C" CLASS 150MM IS-1239(H)	12.05	Mtr
MS ERW PIPE "C" CLASS 15MM IS-1239(H)	6.02	Mtr
MS ERW PIPE "C" CLASS 25MM IS-1239(S)	18.08	Mtr
MS ERW PIPE "C" CLASS 40MM IS-1239(S)	180.89	Mtr
MS ERW PIPE "C" CLASS 50MM IS-1239(S)	144.71	Mtr
MS ERW PIPE "C" CLASS 80MM IS-1239(H)	54.26	Mtr
MS ERW PIPE "C" CLASS 100MM IS-1239(H)	186.92	Mtr
MS ERW PIPE 200NB X 5.00MM THK IS-3589(H)	6.03	Mtr
MS ERW PIPE 400NB X 5.00MM THK IS-3589(S)	12.09	Mtr
ELECTRIC MOTOR 112TEFC 3.7KW 4 POLE 415V	4	Nos
ELECTRIC MOTOR 112TEFC 7.5KW 4 POLE 415V	1	Nos
ELECTRIC MOTOR 112TEFC 2.2KW 4 POLE 415V	1	Nos
ELECTRIC MOTOR 112TEFC 1.5KW 4 POLE 415V	1	Nos
ELECTRIC MOTOR 90TEFC 1.10KW 4 POLE 415V	1	Nos
SITRANS PROBE LU/ULTRASONIC TRANSMITTER	2	Nos
BLIND FLANGE 3" 150#	2	Nos
AS SEAMLESS PIPE 15MM SCH-80 P11 SA335 MSL	6.46	Nos
AS SEAMLESS PIPE 25MM SCH-80 P11 SA335 MSL	205.56	Nos
CS SEAMLESS PIPE 15MM SCH-80 A106 GR"B" MSL	16.19	Nos
CS SEAMLESS PIPE 20MM SCH-80 A106 GR"B" JR	6.51	Nos
CS SEAMLESS PIPE 25MM SCH-80 A106 GR"B" JR	462.97	Nos
CS SEAMLESS PIPE 50MM SCH-40 A106 GR"B" JR	249.97	Nos
CS SEAMLESS PIPE 50MM SCH-40 A106 GR"B" JR	86.75	Nos
CS SEAMLESS PIPE 250MM SCH-40 A106 GR"B" ISMT	6.06	Nos
CS SEAMLESS PIPE 350MM SCH-30 A106 GR"B" MSL	39.81	Nos
CS SEAMLESS PIPE 200MM SCH-20 A106 GR"B" ISMT	169.54	Nos
STUB COLUMN	1	Lot
SAG ROD	1	Lot
STUB COLUMN	1	Lot
SAG ROD	1	Lot
DSH-163A	1	Nos
40-DSH-163B	1	Nos
40-DSH-171	1	Nos
40-DSH-165	1	Nos
40-DSH-170	1	Nos
40-DSH-162	1	Nos
40-DSH-169	1	Nos
DSH-161	1	Nos
DSH-168	1	Nos
LOCAL PUSH BUTTON STATION	4	Nos

LOCAL PUSH BUTTON STATION	4	Nos
WARM UP VENT SILENCER	2	Nos
MOTORIZED ELECTRIC ACTUATOR FLAP GATE DIVERTER ASSLY	1	Nos
SS PIPE 150MM SCH-10 A312TP302 THK3.4MM	297.8	Mtr
PLAIN WATER DUST SUPPRESSION SYSTEM	1	Set
CS SEAMLESS PIPE 150MM SCH-40 A106 GR"B" ISMT	145.63	Mtr
CS SEAMLESS PIPE 200MM SCH-20 A106 GR"B" ISMT	211.09	Mtr
CS SEAMLESS PIPE 200MM SCH-20 A106 GR"B" ISMT	94.04	Mtr
CS SEAMLESS PIPE 250MM SCH-20 A106 GR"B" MSL	119.71	Mtr
CS SEAMLESS PIPE 200MM SCH-20 A106 GR"B" MSL	21.63	Mtr
CS PIPE FITTINGS	356	Nos
FLUID COUPLING CDR 420	1	Nos
V. PULLEY	1	Nos
THK. SRF PVC COATED TARPULIN FABRIC	1	Nos
SLIDING GATE	6	Nos
ASSLY & DET OF ASH DRAIN PIPE	1	Set
SLIDING GATE	6	Nos
ASSLY & DET OF ASH DRAIN PIPE	1	Set
LT PCC	1	Set
SUB LIGHTING DISTRIBUTION BOARD	7	Nos
UPS DISTRIBUTION BOARD	1	Nos
MLDB-1	1	Set
FDB-2	1	Set
FUEL FEEDER VFD PANEL	1	Set
LT PCC	1	Set
PANEL ACCESSORIES	1	Lot
LT PCC	1	Set
INDUSTRIES LOCAL PB STATION	1	Set
COGEN VFD-1	1	Set
PANEL ACCESSORIES	1	Lot
CONVEYOR BELT 650MM	530	Mtr
CONVEYOR BELT 500MM	380	Mtr
IBR CS PIPE FITTINGS	68	Nos
DG SYSTEM - LT, 415, AIR COOLED BRUSHLESS EXCITATION, 625KVA - DIESEL GENERATOR	1	Set
CONTROL PANEL	1	Set
EXHAUST SILENCER	1	Nos
SPREADER	2	Nos
DG SYSTEM - LT, 415, AIR COOLED BRUSHLESS EXCITATION, 625KVA - DIESEL GENERATOR	1	Nos
CONTROL PANEL	1	Nos
EXHAUST SILENCER	1	Nos
SPREADER	2	Nos
ALUMINIUM SHEET COIL - ROLED COLED SHEET #	4155	Kg
PNEUMATIC VALVE 125MM	2	Nos
CONTROL PANEL LT PCC	1	Set
40MM DIA GI ANGULAR BEND PIPE ALONG WITH 2 NO WALL MOUNTED BRACKET	23	Nos
40MM DIA 3 MTR LONG GI BEND	37	Nos
63A 3PHASE 5 PIN WELDING SOCKET WITH ENCLOSURE	5	Lot
5A 240V 3 PIN PLUG & SOCKET WITH ENCLOSURE	5	Nos
M8X100MM ANCHOR FASTNER	50	Nos
ELECTRICAL WIRING HARDWARE	1	Lot
COGEN VFD-2	1	Set
PANEL ACCESSORIES	1	Lot
DNLN1LT8	37	Nos
IPFC112LT8-16	2	Nos
LCTR-36-FO-CDL	45	Nos
LSTP-72-CDL	23	Nos
LHB-100-CDL	6	Nos
LWV12-35-CDL	234	Nos
LBHP-10-CDL	34	Nos
LTS-20-865-2	192	Nos
LTS-20-865-2	41	Nos
RUBBER EXPANSION JOINT 250MM WITH RETAINER RING, CONTROL UNIT, FLANGE & FASTNER	4	Set
DEW POINT TRANSMITTER	1	Nos
SAMPLING SYSTEM FOR ANALYZER	1	Nos

DIGITAL INDICATOR WITH CONTROLLER RANGE -60 TO +60 DEG	1	Nos
VERIABLE SPRING SUPPORT - SH-02	1	Set
CHECK VALVE 150MM BW 150# A216 GR WCB	1	Nos
GLOBE VALVE 25MM SW 1500# A182 GR F22 CL3	3	Nos
CHECK VALVE 25MM SW 1500# A182 GR F22 CL3	1	Nos
GATE VALVE 150MM BW 150# A216 GR WCB	1	Nos
GATE VALVE 350MM BW 150# A216 GR WCB	1	Nos
VERIABLE SPRING SUPPORT - SH-02	1	Set
CI PIPE 100MM DIA, 3 MTR LONG 13MM THK WITH CLAMPS AND ACCESSORIES	62	Nos
ELECTROLYSTIC POWDER	62	Nos
GI FUNNEL SUTABLE FOR 100 CI PIPE	60	Nos
GEAR BOX STUD U 800 RHB 30/1 R/ACW	1	Nos
GEAR BOX STUD U 800 RHB 60/1 L/CW	1	Nos
GEAR BOX STUD U 500 RHB 70/1 L/CW	1	Nos
GEAR BOX STUD U 700 RHB 70/1 R/ACW	1	Nos
GEAR BOX STUD U 500 RHB 30/1 R/ACW	1	Nos
GEAR BOX STUD U 500 RHB 70/1 L/CW	1	Nos
GEAR BOX STUD U 700 RHB 30/1 L/CW	1	Nos
GEAR BOX STUD U 600 RHB 60/1 L/CW	1	Nos
GEAR BOX STUD U 600 RHB 60/1 R/ACW	1	Nos
GEAR BOX STUD U 400 RHB 70/1 R000 HANDING	1	Nos
PA FAN MONORAIL STRUCTURE	1	Lot
BED MATERIAL MONORAIL STRUCTURE	1	Lot
FD FAN MONORAIL STRUCTURE	1	Lot
ID FAN MONORAIL STRUCTURE	1	Lot
FD FAN MONORAIL STRUCTURE	1	Lot
ID FAN MONORAIL STRUCTURE	1	Lot
HPS PRE-HEATER	1	Nos.
GUIDED SUPER HEATER TUBES	1	Nos.
HIGH ALLOY SPECIAL STEEL HEAT EXCHANGER	1	Nos.
NPS PRE-HEATER	1	Nos.
LPS PRE-HEATER-1	1	Nos.
PLATE HEAT EXCHANGER	1	Nos
GUIDED SUPER HEATER TUBES	1	Nos.
DRYING TOWER	1	Nos.
OA STORAGE TANK	1	Nos.
ACID CIRCULATION TANK	1	Nos.
CONDENSER	1	Nos.
GUIDED SUPER HEATER TUBE	1	Nos.
ALKALI STORAGE TANK	1	Nos.
ALKALI SOLUTION TANK	1	Nos.
SA525 GR. 50 B EQUIPMENT	1	Nos.
SS304L EQUIPMENT	1	Nos.

SS304L EQUIPMENT	1	Nos.
SS304L EQUIPMENT	1	Nos.
SS304L EQUIPMENT	1	Nos.
SS304L EQUIPMENT	1	Nos.
SS304L EQUIPMENT	1	Nos.
SS304L EQUIPMENT	1	Nos.
COLASCR	3	Nos.
COLASCR	2	Nos.
CANDLE FITTERES	1	Nos.
PUMP TANKS	1	Nos.
HOT WATER TANK	1	Nos.
ACETIC ACID STORAGE TANKER	1	Nos.
CAUSTIC SODA LYE STORAGE TANKER	1	Nos.
SPENT SULP ACID STORAGE TANKER	1	Nos.
DCDA TYPE HOT HEAT EXCHANGER	1614	Nos.
ONA MAKE TANK	1	Nos.
ONA STORAGE TANK	1	Nos.
ONA STORAGE TANK	1	Nos.
ONA BATCH TANK	1	Nos.
CATALYST SEPRATION TANK	1	Nos.
CRUD ORTHO ANISIDINE STORAGE TANK	1	Nos.
CRUD ORTHO ANISIDINE STORAGE TANK	1	Nos.
SCARLET DISSOLUTION REACTOR	1	Nos.
E-350 HIGH TENSILE LOAD BEAM	275	Nos.
E-350 HIGH TENSILE LOAD BEAM	250	Nos.
E-350 HIGH TENSILE LOAD COLUMNS	290	Nos.
E-350 HIGH TENSILE LOAD COLUMNS	380	Nos.
E-350 HIGH TENSILE LOAD BEAM	150	Nos.
OA Refining System -- Vessel	1	Nos.
Methanol Recovery - Reboiler Kettle	1	Nos.
Crude TC Treatment Vessel	1	Nos.
Sodium Methoxide Reactor	1	Nos.
Distillation Kettle	1	Nos.
Washer	1	Nos.
Blowers	2	Nos.
Vessel	2	Nos.
Vessel	2	Nos.
Vessel	2	Nos.
Soft water Make up Tank	1	Nos.
NOx Absorption Storage Tank	1	Nos.
NOx Absorption Storage Tank	1	Nos.
NOx Absorption Storage Tank	1	Nos.
NOx Absorption Storage Tank	1	Nos.
FAT - Plates	1	Nos.
IPAT - Plates	1	Nos.
Vessel	1	Nos.
Vessel	1	Nos.
Vessel	1	Nos.
Vessel	1	Nos.
Steam Evaporator	1	Nos.
Sulpur Melter	1	Nos.
Acid. Mixture	1	Nos.
Hot Water Tank	1	Nos.
DMW Tank	1	Nos.
Sulphuric Acid Day Tank	1	Nos.
Dosing Tank	1	Nos.
Spent Caustic Storage Tank	1	Nos.
Sodium Acetate Liquor Storage Tank	1	Nos.
Caustic Soda Lye Batch Tank	1	Nos.
Control System panel	1	Nos.
Scarlet Precipitation Reactor	1	Nos.
Soda Ash Solution Vessel	1	Nos.
Cyclone Separators	2	Nos.
Economisers E1 and E2	2	Nos.
Methanol Storage Tanks	1	Nos.
TDMS Main Tanks	1	Nos.
PDMS Receivers Tanks	1	Nos.
PTC Storage Tank	1	Nos.
Sulfur Dichloride Reactor	1	Nos.
Reactor + Agitator	1	Nos.
Columns (As per your Specs)	1	Nos.
Scrubber system	1	Nos.
Scrubbing system	1	Nos.
Nitric Acid Day Tank	1	Nos.
Acetic Acid Day Tank	1	Nos.
Caustic Soda Lye Day Tank	1	Nos.
Gas mixer	1	Nos.
Condensers	3	Nos.
FABRICATION OF E-350 HIGH TENSILE LOAD COLUMNS	1	Nos.
FABRICATION OF E-350 HIGH TENSILE LOAD BEAMS	1	Nos.