

GROUND FLOOR PLAN, TYPICAL FLOOR PLAN, AREA STATEMENT, ELEVATION, SECTION LIGHT & VENTILATION TABLE, CARPET AREA STATEMENT & DOOR WINDOW SCHEDULE.

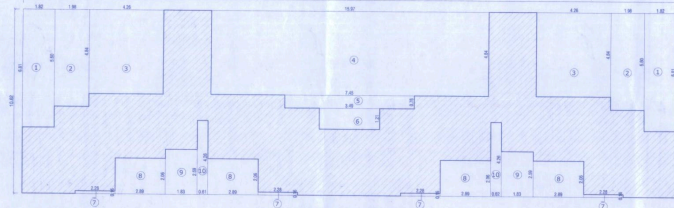
STAMP OF APPROVAL OF PLAN

यह नक्शा नगरपालिकाको नियम अनुसार तैयार गरिएको छ। यस नक्शाको आधारमा निर्माण कार्य गर्न अनुमति दिइएको छ।
 नक्शा तैयार गर्ने व्यक्तिको नाम: अमरे गंगुली
 नक्शा तैयार गर्ने पेशे: आर्किटेक्ट

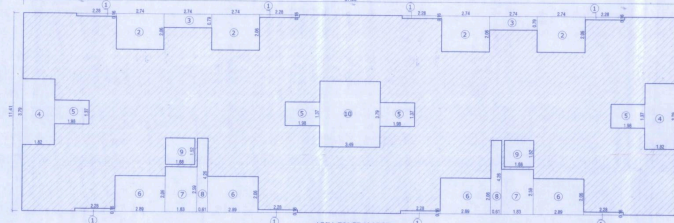
Amre Ganguli
 आर्किटेक्ट, पेशे
 ठेगाना: पाल्पा, कैलाली



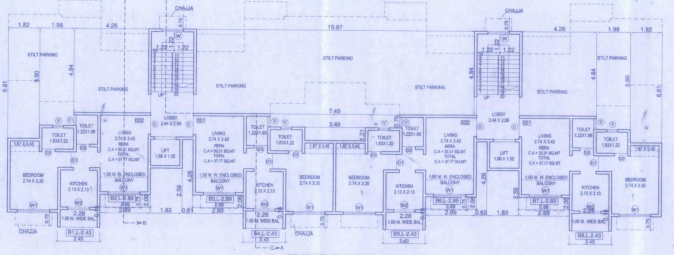
ELEVATION TYPE - B SCALE: 1:100



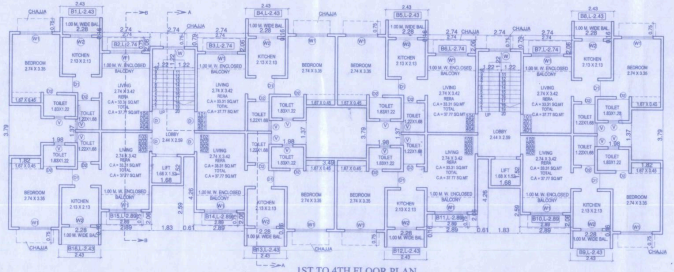
AREA DIAGRAM FOR GROUND FLOOR BUILDING NO - 2, TYPE - B SCALE: 1:100



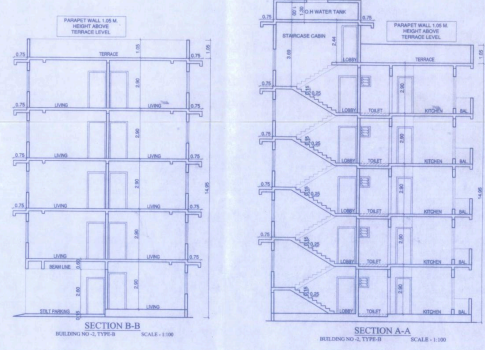
AREA DIAGRAM FOR FIRST TO FOURTH FLOOR BUILDING NO - 2, TYPE - B SCALE: 1:100



GROUND FLOOR PLAN BUILDING NO - 2, TYPE - B SCALE: 1:100



1ST TO 4TH FLOOR PLAN BUILDING NO - 2, TYPE - B SCALE: 1:100



SECTION B-B BUILDING NO - 2, TYPE - B SCALE: 1:100

SECTION A-A BUILDING NO - 2, TYPE - B SCALE: 1:100

SR. NO.	OCCUPANCY	TOTAL PARKING SPACE FOR EVERY ONE PARKING SPACE FOR EVERY	TOTAL PARKING STATEMENT - BUILDING NO. 2, TYPE - B		TOTAL NO. OF CAR SCOOTER CYCLE		REQUIRED		PROVIDED	
			NO.	NO.	NO.	NO.	NO.	NO.	NO.	NO.
1	RESIDENTIAL	3	1	3	0	0	0	0	0	0
2	MULTI-FAMILY RESIDENTIAL	5	5	5	36	0	45	45	0	45
TOTAL					36	0	45	45	0	45

AREA CALCULATION (FIRST TO FOURTH FLOOR) BUILDING NO - 2 TYPE - B	
1	1.1 X 37.51 X 11.41 = 498.56
2	2.1 X 1.8 X 2.28 X 1.79 = 13.89
3	2.4 X 2.24 X 2.06 = 10.28
4	2.4 X 1.82 X 1.79 = 7.78
5	2.4 X 1.82 X 1.79 = 7.78
6	2.4 X 1.82 X 1.79 = 7.78
7	2.4 X 1.82 X 1.79 = 7.78
8	2.4 X 1.82 X 1.79 = 7.78
9	2.4 X 1.82 X 1.79 = 7.78
10	2.4 X 1.82 X 1.79 = 7.78
11	2.4 X 1.82 X 1.79 = 7.78
12	2.4 X 1.82 X 1.79 = 7.78
13	2.4 X 1.82 X 1.79 = 7.78
14	2.4 X 1.82 X 1.79 = 7.78
15	2.4 X 1.82 X 1.79 = 7.78
16	2.4 X 1.82 X 1.79 = 7.78
17	2.4 X 1.82 X 1.79 = 7.78
18	2.4 X 1.82 X 1.79 = 7.78
19	2.4 X 1.82 X 1.79 = 7.78
20	2.4 X 1.82 X 1.79 = 7.78
21	2.4 X 1.82 X 1.79 = 7.78
22	2.4 X 1.82 X 1.79 = 7.78
23	2.4 X 1.82 X 1.79 = 7.78
24	2.4 X 1.82 X 1.79 = 7.78
25	2.4 X 1.82 X 1.79 = 7.78
26	2.4 X 1.82 X 1.79 = 7.78
27	2.4 X 1.82 X 1.79 = 7.78
28	2.4 X 1.82 X 1.79 = 7.78
29	2.4 X 1.82 X 1.79 = 7.78
30	2.4 X 1.82 X 1.79 = 7.78
31	2.4 X 1.82 X 1.79 = 7.78
32	2.4 X 1.82 X 1.79 = 7.78
33	2.4 X 1.82 X 1.79 = 7.78
34	2.4 X 1.82 X 1.79 = 7.78
35	2.4 X 1.82 X 1.79 = 7.78
36	2.4 X 1.82 X 1.79 = 7.78
37	2.4 X 1.82 X 1.79 = 7.78
38	2.4 X 1.82 X 1.79 = 7.78
39	2.4 X 1.82 X 1.79 = 7.78
40	2.4 X 1.82 X 1.79 = 7.78
41	2.4 X 1.82 X 1.79 = 7.78
42	2.4 X 1.82 X 1.79 = 7.78
43	2.4 X 1.82 X 1.79 = 7.78
44	2.4 X 1.82 X 1.79 = 7.78
45	2.4 X 1.82 X 1.79 = 7.78
46	2.4 X 1.82 X 1.79 = 7.78
47	2.4 X 1.82 X 1.79 = 7.78
48	2.4 X 1.82 X 1.79 = 7.78
49	2.4 X 1.82 X 1.79 = 7.78
50	2.4 X 1.82 X 1.79 = 7.78
51	2.4 X 1.82 X 1.79 = 7.78
52	2.4 X 1.82 X 1.79 = 7.78
53	2.4 X 1.82 X 1.79 = 7.78
54	2.4 X 1.82 X 1.79 = 7.78
55	2.4 X 1.82 X 1.79 = 7.78
56	2.4 X 1.82 X 1.79 = 7.78
57	2.4 X 1.82 X 1.79 = 7.78
58	2.4 X 1.82 X 1.79 = 7.78
59	2.4 X 1.82 X 1.79 = 7.78
60	2.4 X 1.82 X 1.79 = 7.78
61	2.4 X 1.82 X 1.79 = 7.78
62	2.4 X 1.82 X 1.79 = 7.78
63	2.4 X 1.82 X 1.79 = 7.78
64	2.4 X 1.82 X 1.79 = 7.78
65	2.4 X 1.82 X 1.79 = 7.78
66	2.4 X 1.82 X 1.79 = 7.78
67	2.4 X 1.82 X 1.79 = 7.78
68	2.4 X 1.82 X 1.79 = 7.78
69	2.4 X 1.82 X 1.79 = 7.78
70	2.4 X 1.82 X 1.79 = 7.78
71	2.4 X 1.82 X 1.79 = 7.78
72	2.4 X 1.82 X 1.79 = 7.78
73	2.4 X 1.82 X 1.79 = 7.78
74	2.4 X 1.82 X 1.79 = 7.78
75	2.4 X 1.82 X 1.79 = 7.78
76	2.4 X 1.82 X 1.79 = 7.78
77	2.4 X 1.82 X 1.79 = 7.78
78	2.4 X 1.82 X 1.79 = 7.78
79	2.4 X 1.82 X 1.79 = 7.78
80	2.4 X 1.82 X 1.79 = 7.78
81	2.4 X 1.82 X 1.79 = 7.78
82	2.4 X 1.82 X 1.79 = 7.78
83	2.4 X 1.82 X 1.79 = 7.78
84	2.4 X 1.82 X 1.79 = 7.78
85	2.4 X 1.82 X 1.79 = 7.78
86	2.4 X 1.82 X 1.79 = 7.78
87	2.4 X 1.82 X 1.79 = 7.78
88	2.4 X 1.82 X 1.79 = 7.78
89	2.4 X 1.82 X 1.79 = 7.78
90	2.4 X 1.82 X 1.79 = 7.78
91	2.4 X 1.82 X 1.79 = 7.78
92	2.4 X 1.82 X 1.79 = 7.78
93	2.4 X 1.82 X 1.79 = 7.78
94	2.4 X 1.82 X 1.79 = 7.78
95	2.4 X 1.82 X 1.79 = 7.78
96	2.4 X 1.82 X 1.79 = 7.78
97	2.4 X 1.82 X 1.79 = 7.78
98	2.4 X 1.82 X 1.79 = 7.78
99	2.4 X 1.82 X 1.79 = 7.78
100	2.4 X 1.82 X 1.79 = 7.78

AREA CALCULATION (GROUND FLOOR) BUILDING NO - 2 TYPE - B	
1	1.1 X 37.51 X 11.41 = 498.56
2	2.1 X 1.8 X 2.28 X 1.79 = 13.89
3	2.4 X 2.24 X 2.06 = 10.28
4	2.4 X 1.82 X 1.79 = 7.78
5	2.4 X 1.82 X 1.79 = 7.78
6	2.4 X 1.82 X 1.79 = 7.78
7	2.4 X 1.82 X 1.79 = 7.78
8	2.4 X 1.82 X 1.79 = 7.78
9	2.4 X 1.82 X 1.79 = 7.78
10	2.4 X 1.82 X 1.79 = 7.78
11	2.4 X 1.82 X 1.79 = 7.78
12	2.4 X 1.82 X 1.79 = 7.78
13	2.4 X 1.82 X 1.79 = 7.78
14	2.4 X 1.82 X 1.79 = 7.78
15	2.4 X 1.82 X 1.79 = 7.78
16	2.4 X 1.82 X 1.79 = 7.78
17	2.4 X 1.82 X 1.79 = 7.78
18	2.4 X 1.82 X 1.79 = 7.78
19	2.4 X 1.82 X 1.79 = 7.78
20	2.4 X 1.82 X 1.79 = 7.78
21	2.4 X 1.82 X 1.79 = 7.78
22	2.4 X 1.82 X 1.79 = 7.78
23	2.4 X 1.82 X 1.79 = 7.78
24	2.4 X 1.82 X 1.79 = 7.78
25	2.4 X 1.82 X 1.79 = 7.78
26	2.4 X 1.82 X 1.79 = 7.78
27	2.4 X 1.82 X 1.79 = 7.78
28	2.4 X 1.82 X 1.79 = 7.78
29	2.4 X 1.82 X 1.79 = 7.78
30	2.4 X 1.82 X 1.79 = 7.78
31	2.4 X 1.82 X 1.79 = 7.78
32	2.4 X 1.82 X 1.79 = 7.78
33	2.4 X 1.82 X 1.79 = 7.78
34	2.4 X 1.82 X 1.79 = 7.78
35	2.4 X 1.82 X 1.79 = 7.78
36	2.4 X 1.82 X 1.79 = 7.78
37	2.4 X 1.82 X 1.79 = 7.78
38	2.4 X 1.82 X 1.79 = 7.78
39	2.4 X 1.82 X 1.79 = 7.78
40	2.4 X 1.82 X 1.79 = 7.78
41	2.4 X 1.82 X 1.79 = 7.78
42	2.4 X 1.82 X 1.79 = 7.78
43	2.4 X 1.82 X 1.79 = 7.78
44	2.4 X 1.82 X 1.79 = 7.78
45	2.4 X 1.82 X 1.79 = 7.78
46	2.4 X 1.82 X 1.79 = 7.78
47	2.4 X 1.82 X 1.79 = 7.78
48	2.4 X 1.82 X 1.79 = 7.78
49	2.4 X 1.82 X 1.79 = 7.78
50	2.4 X 1.82 X 1.79 = 7.78
51	2.4 X 1.82 X 1.79 = 7.78
52	2.4 X 1.82 X 1.79 = 7.78
53	2.4 X 1.82 X 1.79 = 7.78
54	2.4 X 1.82 X 1.79 = 7.78
55	2.4 X 1.82 X 1.79 = 7.78
56	2.4 X 1.82 X 1.79 = 7.78
57	2.4 X 1.82 X 1.79 = 7.78
58	2.4 X 1.82 X 1.79 = 7.78
59	2.4 X 1.82 X 1.79 = 7.78
60	2.4 X 1.82 X 1.79 = 7.78
61	2.4 X 1.82 X 1.79 = 7.78
62	2.4 X 1.82 X 1.79 = 7.78
63	2.4 X 1.82 X 1.79 = 7.78
64	2.4 X 1.82 X 1.79 = 7.78
65	2.4 X 1.82 X 1.79 = 7.78
66	2.4 X 1.82 X 1.79 = 7.78
67	2.4 X 1.82 X 1.79 = 7.78
68	2.4 X 1.82 X 1.79 = 7.78
69	2.4 X 1.82 X 1.79 = 7.78
70	2.4 X 1.82 X 1.79 = 7.78
71	2.4 X 1.82 X 1.79 = 7.78
72	2.4 X 1.82 X 1.79 = 7.78
73	2.4 X 1.82 X 1.79 = 7.78
74	2.4 X 1.82 X 1.79 = 7.78
75	2.4 X 1.82 X 1.79 = 7.78
76	2.4 X 1.82 X 1.79 = 7.78
77	2.4 X 1.82 X 1.79 = 7.78
78	2.4 X 1.82 X 1.79 = 7.78
79	2.4 X 1.82 X 1.79 = 7.78
80	2.4 X 1.82 X 1.79 = 7.78
81	2.4 X 1.82 X 1.79 = 7.78
82	2.4 X 1.82 X 1.79 = 7.78
83	2.4 X 1.82 X 1.79 = 7.78
84	2.4 X 1.82 X 1.79 = 7.78
85	2.4 X 1.82 X 1.79 = 7.78
86	2.4 X 1.82 X 1.79 = 7.78
87	2.4 X 1.82 X 1.79 = 7.78
88	2.4 X 1.82 X 1.79 = 7.78
89	2.4 X 1.82 X 1.79 = 7.78
90	2.4 X 1.82 X 1.79 = 7.78
91	2.4 X 1.82 X 1.79 = 7.78
92	2.4 X 1.82 X 1.79 = 7.78
93	2.4 X 1.82 X 1.79 = 7.78
94	2.4 X 1.82 X 1.79 = 7.78
95	2.4 X 1.82 X 1.79 = 7.78
96	2.4 X 1.82 X 1.79 = 7.78
97	2.4 X 1.82 X 1.79 = 7.78
98	2.4 X 1.82 X 1.79 = 7.78
99	2.4 X 1.82 X 1.79 = 7.78
100	2.4 X 1.82 X 1.79 = 7.78

SCHEDULE OF WINDOW		SCHEDULE OF DOOR	
NO.	TYPE	NO.	TYPE
1	1.1 X 37.51 X 11.41 = 498.56	1	1.1 X 37.51 X 11.41 = 498.56
2	2.1 X 1.8 X 2.28 X 1.79 = 13.89	2	2.1 X 1.8 X 2.28 X 1.79 = 13.89
3	2.4 X 2.24 X 2.06 = 10.28	3	2.4 X 2.24 X 2.06 = 10.28
4	2.4 X 1.82 X 1.79 = 7.78	4	2.4 X 1.82 X 1.79 = 7.78
5	2.4 X 1.82 X 1.79 = 7.78	5	2.4 X 1.82 X 1.79 = 7.78
6	2.4 X 1.82 X 1.79 = 7.78	6	2.4 X 1.82 X 1.79 = 7.78
7	2.4 X 1.82 X 1.79 = 7.78	7	2.4 X 1.82 X 1.79 = 7.78
8	2.4 X 1.82 X 1.79 = 7.78	8	2.4 X 1.82 X 1.79 = 7.78
9	2.4 X 1.82 X 1.79 = 7.78	9	2.4 X 1.82 X 1.79 = 7.78
10	2.4 X 1.82 X 1.79 = 7.78	10	2.4 X 1.82 X 1.79 = 7.78
11	2.4 X 1.82 X 1.79 = 7.78	11	2.4 X 1.82 X 1.79 = 7.78
12	2.4 X 1.82 X 1.79 = 7.78	12	2.4 X 1.82 X 1.79 = 7.78
13	2.4 X 1.82 X 1.79 = 7.78	13	2.4 X 1.82 X 1.79 = 7.78
14	2.4 X 1.82 X 1.79 = 7.78	14	2.4 X 1.82 X 1.79 = 7.78
15	2.4 X 1.82 X 1.79 = 7.78	15	2.4 X 1.82 X 1.79 = 7.78
16	2.4 X 1.82 X 1.79 = 7.78	16	2.4 X 1.82 X 1.79 = 7.78
17	2.4 X 1.82 X 1.79 = 7.78	17	2.4 X 1.82 X 1.79 = 7.78
18	2.4 X 1.82 X 1.79 = 7.78	18	2.4 X 1.82 X 1.79 = 7.78
19	2.4 X 1.82 X 1.79 = 7.78	19	2.4 X 1.82 X 1.79 = 7.78
20	2.4 X 1.82 X 1.79 = 7.78	20	2.4 X 1.82 X 1.79 = 7.78
21	2.4 X 1.82 X 1.79 = 7.78	21	2.4 X 1.82 X 1.79 = 7.78
22	2.4 X 1.82 X 1.79 = 7.78	22	2.4 X 1.82 X 1.79 = 7.78
23	2.4 X 1.82 X 1.79 = 7.78	23	2.4 X 1.82 X 1.79 = 7.78
24	2.4 X 1.82 X 1.79 = 7.78	24	2.4 X 1.82 X 1.79 = 7.78
25	2.4 X 1.82 X 1.79 = 7.78	25	2.4 X 1.82 X 1.79 = 7.78
26	2.4 X 1.82 X 1.79 = 7.78	26	2.4 X 1.82 X 1.79 = 7.78
27	2.4 X 1.82 X 1.79 = 7.78	27	2.4 X 1.82 X 1.79 = 7.78
28			