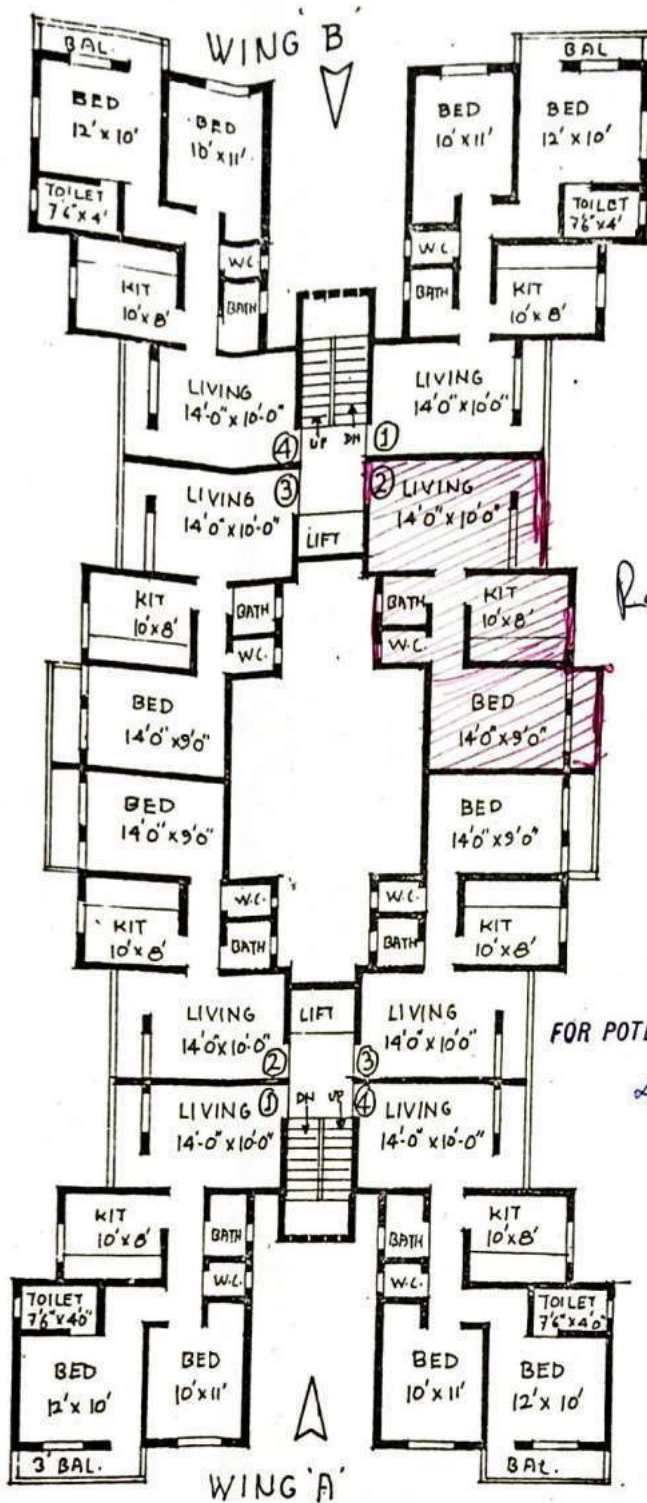


EXHIBIT "C"



Ragini Zutshi

FOR POTENTIAL BUILDERS PVT. LTD.

D. K. Desai

DIRECTOR

typical floor plan

PROPOSED BUILDING AT THAKUR COMPLEX AT VILLAGE POISAR, KANDIVALI (E).

M/S. POTENTIAL BUILDERS PVT. LTD.
75, A WING, MITTAL TOWER,
NARIMAN POINT,
BOMBAY 400 021.

BUILDING NO. Green
WING = B Field
FLAT No. = 107
AREA 43-40 Sq. Mts
C-plot

G.D. SAMBHARE & CO., ARCHITECTS,
69/71, DOL BIN SHIR,
GHOGA STREET, FORT,
BOMBAY 400 001.