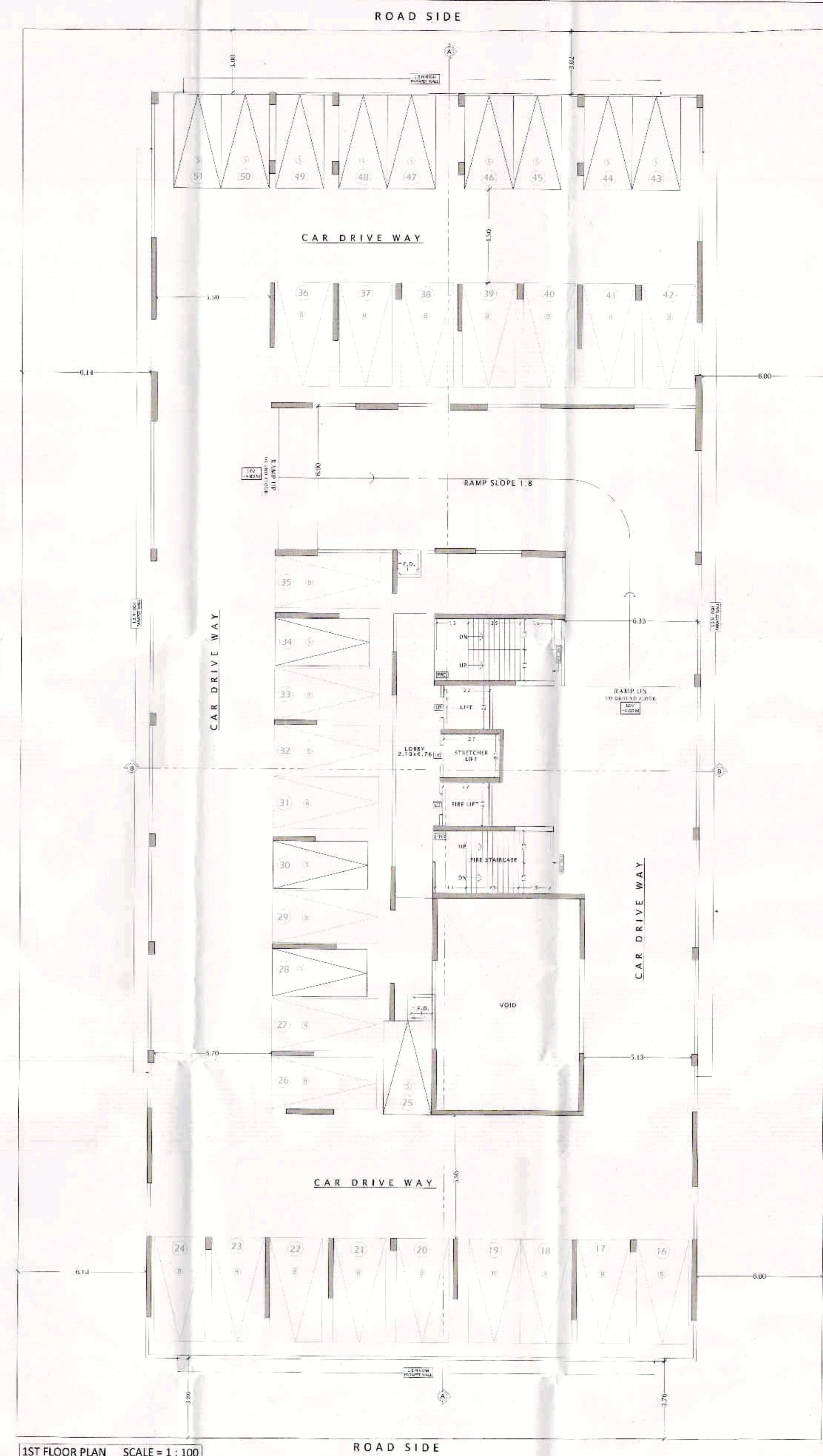
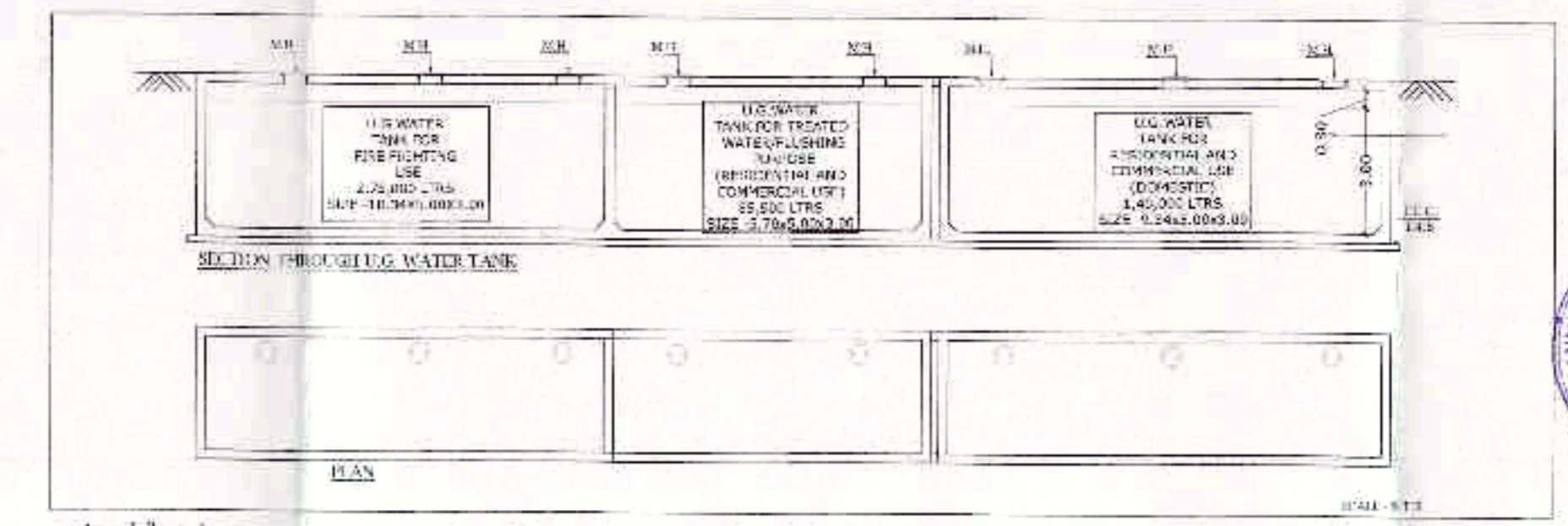


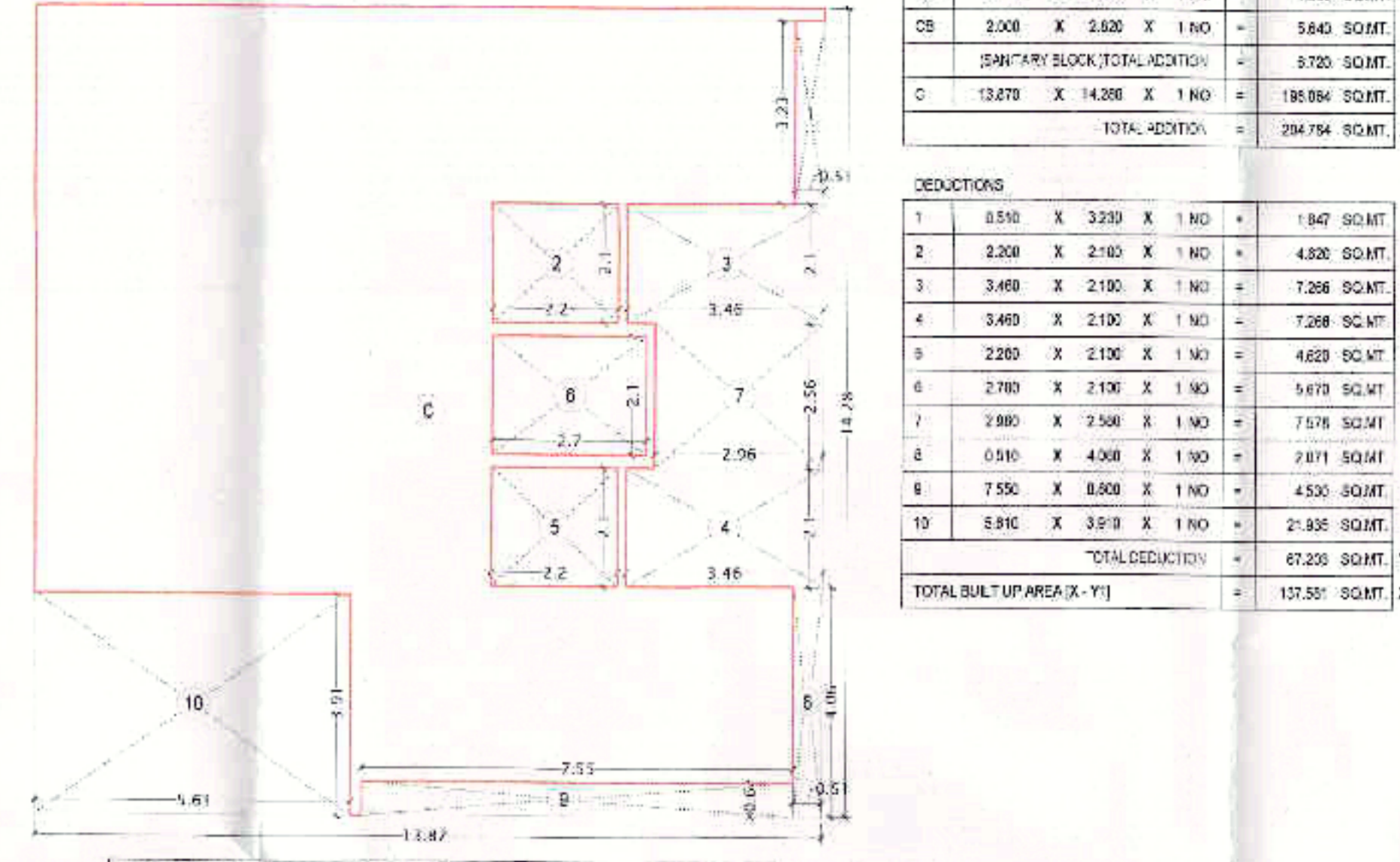
GROUND FLOOR PLAN SCALE = 1 : 100



1ST FLOOR PLAN SCALE = 1 : 100



SANITARY BLOCK



AREA LINE DIAGRAM OF GROUND FLOOR (RESI.) SCALE = 1 : 100

FLOOR	COMMERCIAL AREA	RESIDENTIAL AREA	TOTAL P-LINE AREA
GROUND	390.942	137.581	528.523
1ST	0.000	0.000	0.000
2ND	0.000	0.000	0.000
3RD	0.000	343.856	343.856
4TH	0.000	688.000	688.000
5TH	0.000	688.000	688.000
6TH	0.000	688.000	688.000
7TH	0.000	688.000	688.000
8TH	0.000	284.608	284.608
<b>TOTAL</b>	<b>390.942</b>	<b>3518.045</b>	<b>3908.987</b>

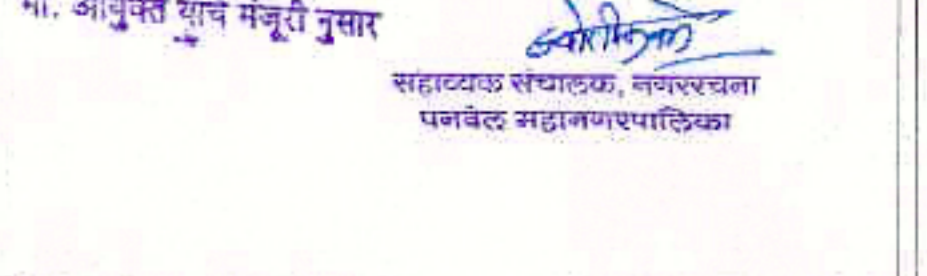
SR. NO.	ROOM	TYPE	SIZE OF ROOM	PROPOSED AREA	MINIMUM AGGREGATE AREA FOR HABITABLE ROOM - 1/10th OF 0.30sq.m. WITH ONE BATH, W.C. TOILET	VENTILATION (PROPOSED WINDOW TYPE)	MIN VENTILATION (PROPOSED WINDOW AREA)
1	LIVING		MAX SIZE 2.9X5.20 MIN SIZE 2.75X4.27	15.080 11.749	1.508 1.174	W3 W4	3.915 3.645
2	BED		MAX SIZE 3.0X3.66 MIN SIZE 3.76X2.75	10.980 10.340	1.098 1.034	W2 W4	4.050 3.645
3	KITCHEN		MAX SIZE 2.40X3.36 MIN SIZE 2.76X2.10	8.064 5.796	0.806 0.580	W5 W6	2.430 2.025
4	TOILET		MAX SIZE 2.08X1.22 MIN SIZE 1.22X1.83	2.538 2.233	0.300 0.300	V V	0.540 0.540

SR. NO.	SHOP/FLAT NO.	DOMESTIC REQUIREMENT OF U.G. WATER TANK	FLUSHING REQUIREMENT U.G. TANK	NO. OF ADDITIONAL TOILET	ADDITIONAL REQUIREMENT U.G. TANK	GRAND TOTAL IN LITRES (A+B+C)
1	11	390.942 / 3 PERSONS X 70 LTRS = 9123	-	11	11X 180 LTRS = 1980	11102
2	47	47X 5 PERSONS X 125 LTRS = 8125	47X 270 LTRS = 12690	47	47X 180 LTRS = 8460	52875

NOTE  
 1) For Residential - unit 5 Person per tenement  
 2) For Commercial - No. of persons on occupant load / area of floors (Refer Table No.8E)  
 3) Water Requirement per capita = 125 Ltrs (Domestic), 270 Ltrs (Flushing)  
 4) Water Requirement for additional Toilet = 180 Ltrs per tenement  
 5) Size of Tank is excluding the Free Board

Sr. No.	BLDG. TYPE	OCCUPANCY	SIZE OF TENEMENT	PARKING SPACE REQUIRED FOR NON CONGESTED AREA		TOTAL NO. OF TENEMENTS	REQUIRED PARKING	
				CAR	SCOOTER		CAR	SCOOTER
1)	Shops	Mercantile (markets, departmental stores, shops and other Commercial users)	For every 100 sq.m. carpet area or fraction thereof	2	6	364.490 SQ.MT.	7	22
2)	Residential	1) Multi-Family residential	For every two tenements with each tenement having carpet area equal to or above 40 sq.m. but less than 80 sq.m. For every two tenements with each tenement having carpet area less than 30 sq.m.	1	5	18	9	45
<b>TOTAL (A)</b>						<b>47</b>	<b>16</b>	<b>125</b>
5% Visitor Parking ( Calculated only on Residential = 16 - Cars & 125 - Scooters )							<b>0</b>	<b>5</b>
<b>TOTAL REQUIRED PARKING</b>							<b>17</b>	<b>130</b>
Multiplication factor (0.8) as per regulation 8.2.2 Table no. 8C							<b>13</b>	<b>104</b>
<b>Parking Required</b>							<b>13</b>	<b>104</b>
Composite Parking, 1 CAR FOR EVERY 6 SCOOTER (1 x 6) (10 car = 60 scooter)							<b>18</b>	<b>108</b>
<b>Total Parking Required</b>							<b>31</b>	<b>-</b>
Composite Parking, 1 CAR WITH 2 SCOOTER							<b>-</b>	<b>-</b>
<b>Existing Parking</b>							<b>-</b>	<b>-</b>
<b>TOTAL PROPOSED PARKING</b>							<b>65</b>	<b>87</b>
							<b>BIG CAR</b>	<b>SMALL CAR</b>
							<b>65</b>	<b>22</b>

DEVELOPMENT PERMISSION FOR PROPOSED RESIDENTIAL + COMMERCIAL BUILDING COMPLEX ON LAND BEARING PLOT NO-76/2, SECTOR-17, KALAMBOLI, NAVI MUMBAI  
 STAMP OF APPROVAL OF PLANS



Sl. No.	Particulars	Area (sq.m.)	Remarks
1)	Area of plot	262.200	
2)	Area of building	3908.987	
3)	Area of car parking	104.000	
4)	Area of scooter parking	104.000	
5)	Area of road	104.000	
6)	Area of staircase	104.000	
7)	Area of void	104.000	
8)	Area of meter room	104.000	
9)	Area of sanitary block	104.000	
10)	Area of ramp	104.000	
11)	Area of entrance lobby	104.000	
12)	Area of fire staircase	104.000	
13)	Area of fire lift	104.000	
14)	Area of fire alarm	104.000	
15)	Area of fire extinguisher	104.000	
16)	Area of fire hose	104.000	
17)	Area of fire bucket	104.000	
18)	Area of fire alarm bell	104.000	
19)	Area of fire alarm siren	104.000	
20)	Area of fire alarm control panel	104.000	
21)	Area of fire alarm manual call point	104.000	
22)	Area of fire alarm sounder	104.000	
23)	Area of fire alarm bell	104.000	
24)	Area of fire alarm siren	104.000	
25)	Area of fire alarm control panel	104.000	
26)	Area of fire alarm manual call point	104.000	
27)	Area of fire alarm sounder	104.000	
28)	Area of fire alarm bell	104.000	
29)	Area of fire alarm siren	104.000	
30)	Area of fire alarm control panel	104.000	
31)	Area of fire alarm manual call point	104.000	
32)	Area of fire alarm sounder	104.000	
33)	Area of fire alarm bell	104.000	
34)	Area of fire alarm siren	104.000	
35)	Area of fire alarm control panel	104.000	
36)	Area of fire alarm manual call point	104.000	
37)	Area of fire alarm sounder	104.000	
38)	Area of fire alarm bell	104.000	
39)	Area of fire alarm siren	104.000	
40)	Area of fire alarm control panel	104.000	
41)	Area of fire alarm manual call point	104.000	
42)	Area of fire alarm sounder	104.000	
43)	Area of fire alarm bell	104.000	
44)	Area of fire alarm siren	104.000	
45)	Area of fire alarm control panel	104.000	
46)	Area of fire alarm manual call point	104.000	
47)	Area of fire alarm sounder	104.000	
48)	Area of fire alarm bell	104.000	
49)	Area of fire alarm siren	104.000	
50)	Area of fire alarm control panel	104.000	
51)	Area of fire alarm manual call point	104.000	
52)	Area of fire alarm sounder	104.000	
53)	Area of fire alarm bell	104.000	
54)	Area of fire alarm siren	104.000	
55)	Area of fire alarm control panel	104.000	
56)	Area of fire alarm manual call point	104.000	
57)	Area of fire alarm sounder	104.000	
58)	Area of fire alarm bell	104.000	
59)	Area of fire alarm siren	104.000	
60)	Area of fire alarm control panel	104.000	
61)	Area of fire alarm manual call point	104.000	
62)	Area of fire alarm sounder	104.000	
63)	Area of fire alarm bell	104.000	
64)	Area of fire alarm siren	104.000	
65)	Area of fire alarm control panel	104.000	
66)	Area of fire alarm manual call point	104.000	
67)	Area of fire alarm sounder	104.000	
68)	Area of fire alarm bell	104.000	
69)	Area of fire alarm siren	104.000	
70)	Area of fire alarm control panel	104.000	
71)	Area of fire alarm manual call point	104.000	
72)	Area of fire alarm sounder	104.000	
73)	Area of fire alarm bell	104.000	
74)	Area of fire alarm siren	104.000	
75)	Area of fire alarm control panel	104.000	
76)	Area of fire alarm manual call point	104.000	
77)	Area of fire alarm sounder	104.000	
78)	Area of fire alarm bell	104.000	
79)	Area of fire alarm siren	104.000	
80)	Area of fire alarm control panel	104.000	
81)	Area of fire alarm manual call point	104.000	
82)	Area of fire alarm sounder	104.000	
83)	Area of fire alarm bell	104.000	
84)	Area of fire alarm siren	104.000	
85)	Area of fire alarm control panel	104.000	
86)	Area of fire alarm manual call point	104.000	
87)	Area of fire alarm sounder	104.000	
88)	Area of fire alarm bell	104.000	
89)	Area of fire alarm siren	104.000	
90)	Area of fire alarm control panel	104.000	
91)	Area of fire alarm manual call point	104.000	
92)	Area of fire alarm sounder	104.000	
93)	Area of fire alarm bell	104.000	
94)	Area of fire alarm siren	104.000	
95)	Area of fire alarm control panel	104.000	
96)	Area of fire alarm manual call point	104.000	
97)	Area of fire alarm sounder	104.000	
98)	Area of fire alarm bell	104.000	
99)	Area of fire alarm siren	104.000	
100)	Area of fire alarm control panel	104.000	

Sl. No.	Particulars	Area (sq.m.)	Remarks
1)	Area of plot	262.200	
2)	Area of building	3908.987	
3)	Area of car parking	104.000	
4)	Area of scooter parking	104.000	
5)	Area of road	104.000	
6)	Area of staircase	104.000	
7)	Area of void	104.000	
8)	Area of meter room	104.000	
9)	Area of sanitary block	104.000	
10)	Area of ramp	104.000	
11)	Area of entrance lobby	104.000	
12)	Area of fire staircase	104.000	
13)	Area of fire lift	104.000	
14)	Area of fire alarm	104.000	
15)	Area of fire extinguisher	104.000	
16)	Area of fire hose	104.000	
17)	Area of fire bucket	104.000	
18)	Area of fire alarm bell	104.000	
19)	Area of fire alarm siren	104.000	
20)	Area of fire alarm control panel	104.000	
21)	Area of fire alarm manual call point	104.000	
22)	Area of fire alarm sounder	104.000	
23)	Area of fire alarm bell	104.000	
24)	Area of fire alarm siren	104.000	
25)	Area of fire alarm control panel	104.000	
26)	Area of fire alarm manual call point	104.000	
27)	Area of fire alarm sounder	104.000	
28)	Area of fire alarm bell	104.000	
29)	Area of fire alarm siren	104.000	
30)	Area of fire alarm control panel	104.000	
31)	Area of fire alarm manual call point	104.000	
32)	Area of fire alarm sounder	104.000	
33)	Area of fire alarm bell	104.000	
34)	Area of fire alarm siren	104.000	
35)	Area of fire alarm control panel	104.000	
36)	Area of fire alarm manual call point	104.000	
37)	Area of fire alarm sounder	104.000	
38)	Area of fire alarm bell	104.000	
39)	Area of fire alarm siren	104.000	
40)	Area of fire alarm control panel	104.000	
41)	Area of fire alarm manual call point	104.000	
42)	Area of fire alarm sounder	104.000	
43)	Area of fire alarm bell	104.000	
44)	Area of fire alarm siren	104.000	
45)	Area of fire alarm control panel	104.000	
46)	Area of fire alarm manual call point	104.000	
47)	Area of fire alarm sounder	104.000	
48)	Area of fire alarm bell	104.000	
49)	Area of fire alarm siren	104.000	
50)	Area of fire alarm control panel	104.000	
51)	Area of fire alarm manual call point	104.000	
52)	Area of fire alarm sounder	104.000	
53)	Area of fire alarm bell	104.000	
54)	Area of fire alarm siren	104.000	
55)	Area of fire alarm control panel	104.000	
56)	Area of fire alarm manual call point	104.000	
57)	Area of fire alarm sounder	104.000	
58)	Area of fire alarm bell	104.000	
59)	Area of fire alarm siren	104.000	
60)	Area of fire alarm control panel	104.000	
61)	Area of fire alarm manual call point	104.000	
62)	Area of fire alarm sounder	104.000	
63)	Area of fire alarm bell	104.000	
64)	Area of fire alarm siren	104.000	
65)	Area of fire alarm control panel	104.000	
66)	Area of fire alarm manual call point	104.000	
67)	Area of fire alarm sounder	104.000	
68)	Area of fire alarm bell	104.000	
69)	Area of fire alarm siren	104.000	
70)	Area of fire alarm control panel	104.000	
71)	Area of fire alarm manual call point	104.000	
72)	Area of fire alarm sounder	104.000	
73)	Area of fire alarm bell	104.000	
74)	Area of fire alarm siren	104.000	
75)	Area of fire alarm control panel	104.000	
76)	Area of fire alarm manual call point	104.000	
77)	Area of fire alarm sounder	104.000	
78)	Area of fire alarm bell	104.000	
79)	Area of fire alarm siren	104.000	
80)	Area of fire alarm control panel	104.000	
81)	Area of fire alarm manual call point	104.000	
82)	Area of fire alarm sounder	104.000	
83)	Area of fire alarm bell	104.000	
84)	Area of fire alarm siren	104.000	
85)	Area of fire alarm control panel	104.000	
86)	Area of fire alarm manual call point	104.000	
87)	Area of fire alarm sounder	104.000	
88)	Area of fire alarm bell	104.000	
89)	Area of fire alarm siren	104.000	
90)	Area of fire alarm control panel	104.000	
91)	Area of fire alarm manual call point	104.000</	