



PROPOSED

PROPOSED

NO. OF UNITS: 120

NO. OF STORIES: 12

NO. OF GARAGES: 120

NO. OF PARKING SPACES: 120

NO. OF BICYCLE SPACES: 120

NO. OF STORAGE SPACES: 120

NO. OF COMMERCIAL SPACES: 120

NO. OF RESIDENTIAL SPACES: 120



PROPOSED

PROPOSED

NO. OF UNITS: 120

NO. OF STORIES: 12

NO. OF GARAGES: 120

NO. OF PARKING SPACES: 120

NO. OF BICYCLE SPACES: 120

NO. OF STORAGE SPACES: 120

NO. OF COMMERCIAL SPACES: 120

NO. OF RESIDENTIAL SPACES: 120

PROPOSED

PROPOSED

NO. OF UNITS: 120

NO. OF STORIES: 12

NO. OF GARAGES: 120

NO. OF PARKING SPACES: 120

NO. OF BICYCLE SPACES: 120

NO. OF STORAGE SPACES: 120

NO. OF COMMERCIAL SPACES: 120

NO. OF RESIDENTIAL SPACES: 120

PROPOSED

PROPOSED

NO. OF UNITS: 120

NO. OF STORIES: 12

NO. OF GARAGES: 120

NO. OF PARKING SPACES: 120

NO. OF BICYCLE SPACES: 120

NO. OF STORAGE SPACES: 120

NO. OF COMMERCIAL SPACES: 120

NO. OF RESIDENTIAL SPACES: 120

PROPOSED

PROPOSED

NO. OF UNITS: 120

NO. OF STORIES: 12

NO. OF GARAGES: 120

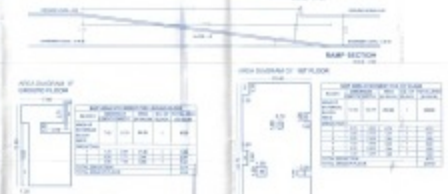
NO. OF PARKING SPACES: 120

NO. OF BICYCLE SPACES: 120

NO. OF STORAGE SPACES: 120

NO. OF COMMERCIAL SPACES: 120

NO. OF RESIDENTIAL SPACES: 120



PROPOSED

PROPOSED

NO. OF UNITS: 120

NO. OF STORIES: 12

NO. OF GARAGES: 120

NO. OF PARKING SPACES: 120

NO. OF BICYCLE SPACES: 120

NO. OF STORAGE SPACES: 120

NO. OF COMMERCIAL SPACES: 120

NO. OF RESIDENTIAL SPACES: 120

PROPOSED

PROPOSED

NO. OF UNITS: 120

NO. OF STORIES: 12

NO. OF GARAGES: 120

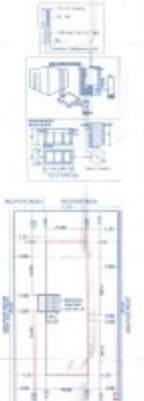
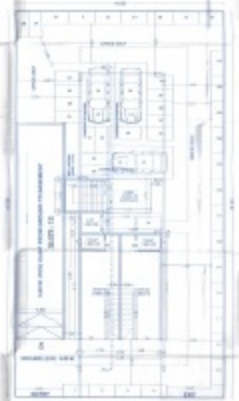
NO. OF PARKING SPACES: 120

NO. OF BICYCLE SPACES: 120

NO. OF STORAGE SPACES: 120

NO. OF COMMERCIAL SPACES: 120

NO. OF RESIDENTIAL SPACES: 120



PROPOSED

PROPOSED

NO. OF UNITS: 120

NO. OF STORIES: 12

NO. OF GARAGES: 120

NO. OF PARKING SPACES: 120

NO. OF BICYCLE SPACES: 120

NO. OF STORAGE SPACES: 120

NO. OF COMMERCIAL SPACES: 120

NO. OF RESIDENTIAL SPACES: 120

APPROVED

APPROVED

NO. OF UNITS: 120

NO. OF STORIES: 12

NO. OF GARAGES: 120

NO. OF PARKING SPACES: 120

NO. OF BICYCLE SPACES: 120

NO. OF STORAGE SPACES: 120

NO. OF COMMERCIAL SPACES: 120

NO. OF RESIDENTIAL SPACES: 120